

Ascension Seton Student

Health Services @ Austin ISD

School Health Advisory Council Presentation

School Year 2021-22



Ascension

Loree S. LaChance, DNP, MHA, RN, NCSN
Director, Ascension Seton Student Health Services

January 5, 2022

Supporting the AISD Mission, Vision, and Values for 25 years



Through Comprehensive School Nursing Services

**Mission: Prepare every student with the knowledge and skills to thrive in
college, career, and life**

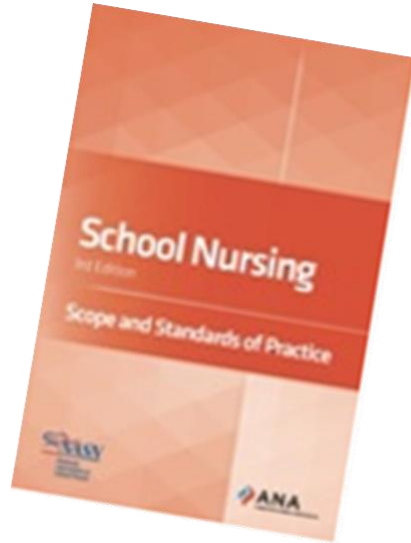
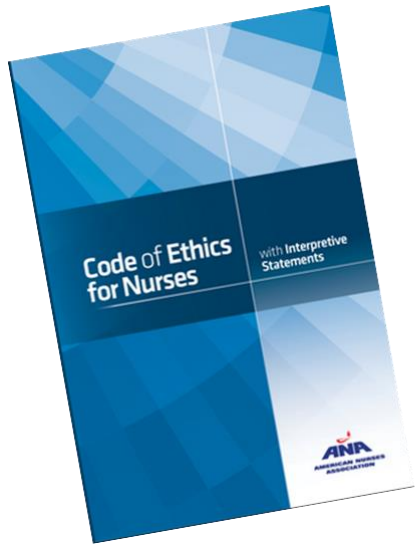
National Association of School Nurses - Framework for 21st Century School Nursing Practice: Better Health. Better Learning

- Standards of Professional Practice
- Care Coordination
- Community and Public Health
- Leadership
- Quality Improvement

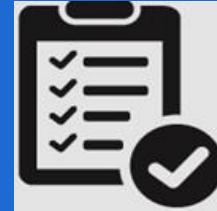


Student-centered nursing care that occurs within the context of the students' family and school community.

Standards of Practice



- Yearly Competency Days
- Illness and Injury Procedures
- Medical Director Oversight



Standards of Practice

- Clinical Competence
- Clinical Guidelines
- Code of Ethics
- Critical Thinking
- Evidence-based Practice
- NASN Position Statements
- Nurse Practice Acts
- Scope and Standards of Practice

Care Coordination

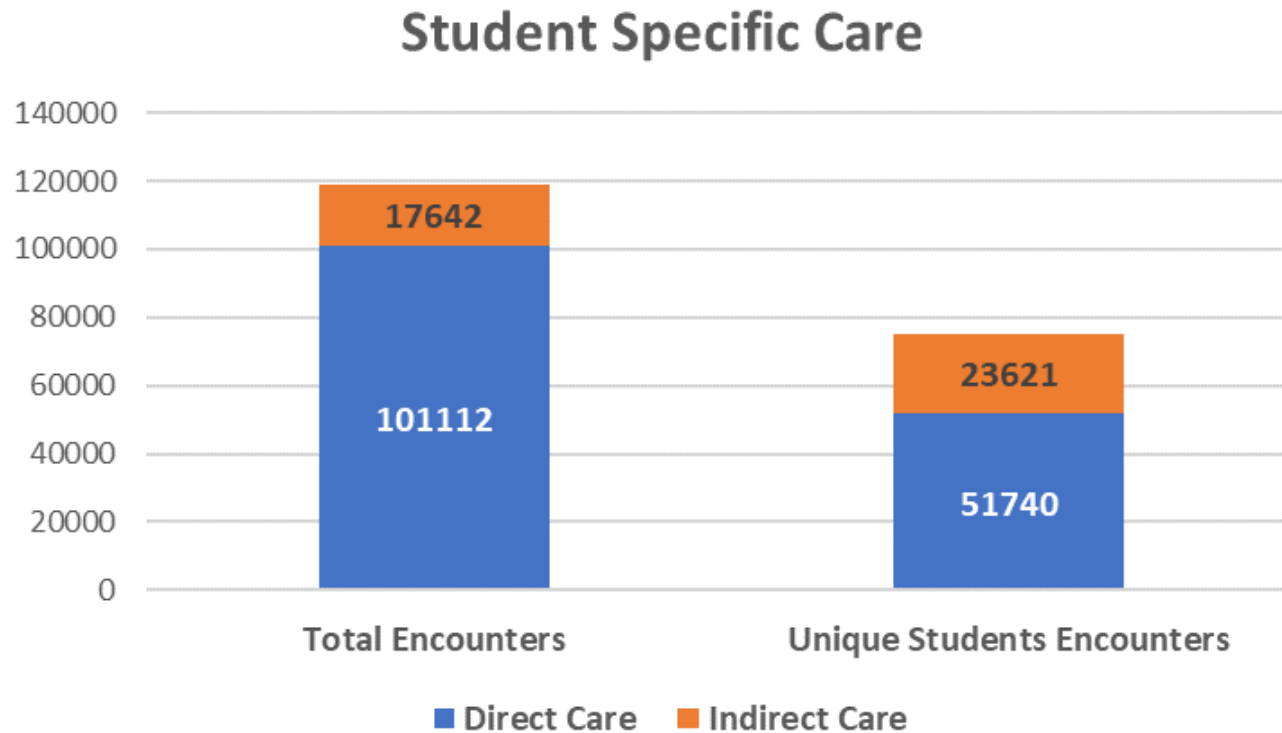
- Most visible aspect of position
- Used with each interaction
- Specialized knowledge
- Shared goals
- Student-centered



Care Coordination

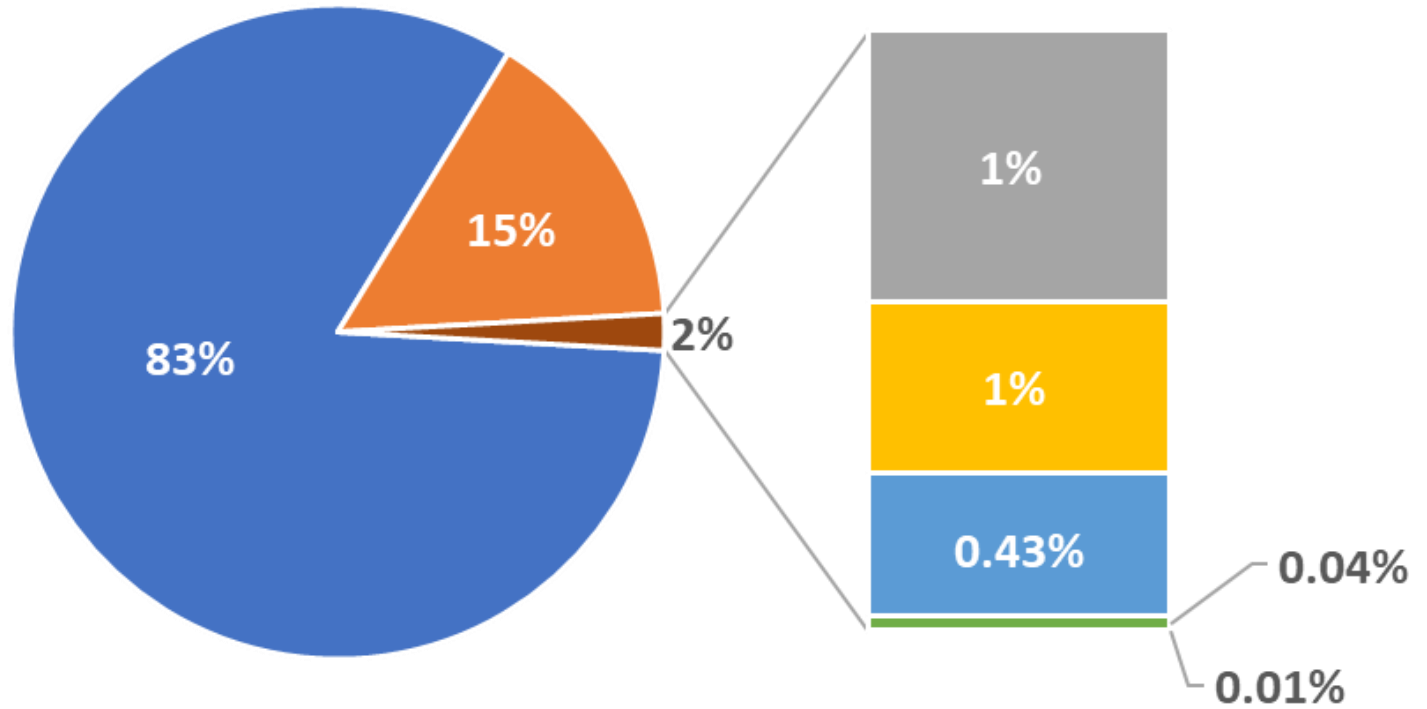
- Case Management
- Chronic Disease Management
- Collaborative Communication
- Direct Care
- Education
- Interdisciplinary Teams
- Motivational Interviewing/
Counseling
- Nursing Delegation
- Student Care Plans
- Student-centered Care
- Student Self-empowerment
- Transition Planning

Examples of Care Coordination: August - December 2021



Medication Administration: 25,742

Outcomes of Direct Student Care



- Returned to class
- Dismissed
- Referred to Administrators
- R/t AISD staff
- R/t Counselor/SW
- R/tSRO
- R/t Campus Based MHT

Comparison of Needs

Category	SY 2021-22 Aug-Dec	SY 2020-21 Aug-Dec	SY 2019-2020 Aug-Dec
Possible Allergic Reactions	266	58	312
Diabetes encounters	10514	935	11534
Student Aggression	826	15	1207
Substance Abuse	249	11	245
Behavioral Health contacts	902	100	799
Playground/Athletic injuries –referred	2314	277	2442
EMS transport	61	1	71
Behavioral Health Referrals	212	44	64

Case Management

- An RN only function
- Creates a safe and effective school setting
- Fosters a health promotion environment
- Provides opportunities for student self-empowerment
- Includes direct and indirect care
- Total case management: 13, 116
- Early Childhood Special Education: 238

Health Teaching

- An RN only function
- Creates a safe and effective school setting
- Target audience - student, staff, parents, and community
- Formal and informal
- Highlights community collaborations

Leadership

- Formal and informal
- Collaborative creation and revisions of policies, procedures, and goals
- Advocacy at multiple levels, multiple partners
- Innovation



Leadership

- Advocacy
- Change Agents
- Education Reform
- Funding and Reimbursement
- Healthcare Reform
- Lifelong Learner
- Models of Practice
- Technology
- Policy Development and Implementation
- Professionalism
- Systems-level Leadership



Quality Improvement

- Continuous Quality Improvement
- Documentation/Data Collection
- Evaluation
- Meaningful Health/Academic Outcomes
- Performance Appraisal
- Research
- Uniform Data Set

Quality Improvement

- School Health Information System (SHIS)
- Active engagement with Region XIII School Nurse Administrators
- Ascension performance standards
- Collaboration with researchers at University of Texas School of Nursing, School of Public Health, & UT Dell Medical School

Community/ Public Health

- Grounded in public health initiative - immunizations and lice
- State-mandated screenings
- Access to Care
- Surveillance



Community/ Public Health

- Access to Care
- Cultural Competency
- Disease Prevention
- Environmental Health
- Health Education
- Health Equity
- Healthy People 2020
- Health Promotion
- Outreach
- Population-based Care
- Risk Reduction
- Screenings/Referral/Follow-up
- Social Determinants of Health
- Surveillance

Immunization Compliance

- Vaccination Requirement
 - “Apply to all children and students entering, attending, enrolling, in and/or transferring to child-care facilities or public or private primary or secondary schools...” Texas Administrative Code 25, §97.61
- Compliance versus Fully Vaccinated
 - Compliance includes those legally allowed to be at school without being fully vaccinated
 - Medical Exemptions
 - Reasons of Conscience (Notarized affidavit from State Department of Health Services)
 - Dependents of Active Duty military
 - In-series
- State Reporting

Immunization Compliance

- Present Levels
 - District rates for all students - 85.4% compliance
 - 1654 students with at least one conscientious exemption (2.34%)
 - Kindergarten compliance ranges: 93.9% - 96.8%
 - Trends - immigrants from Latin America
 - Seventh grade compliance ranges: 85.1% - 100%
 - Trends - well-child appointments, COVID
- Processes
 - Early notifications of delinquencies
 - Executive leadership and administrative support
 - Collaborations with outside organizations and pediatric practices

Community Partners and Future Innovation

Addressing the AISD Values which value diversity, inclusion and meaningful engagement, collaboration, innovation, and aligned resources

Collaboration



The University of Texas at Austin
School of Nursing



The University of Texas at Austin
Dell Medical School



dell children's
EDUCATIONAL
ADVOCACY PROGRAM



AUSTIN
COMMUNITY
COLLEGE
DISTRICT



CONCORDIA
UNIVERSITY
TEXAS



COVID-19 Response

- AISD staff vaccines
- Rapid antigen testing support -
 - Campus and mass testing from start of program
- Education, education, and more education
- Supply and resource management leverage
 - Red bags, N95 masks, sharps containers
- Continued support
 - Vaccine clinics
 - In-patient/remote patient support

Future Initiatives

Concussion Care Coordination

A collaborative effort between school nurses, Dell Children's Emergency Department, and Dell Children's Concussion Clinic

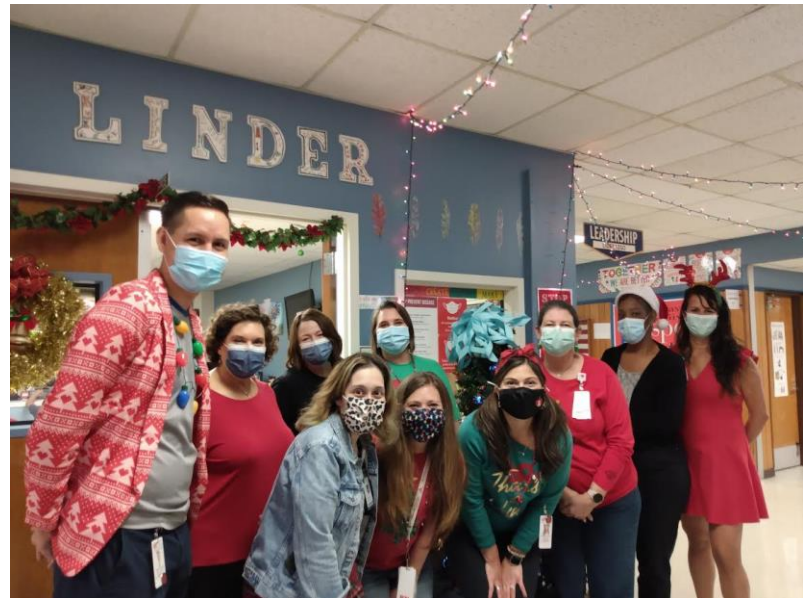
- Monitoring student progress between ED and Clinic appointments
- Coordinating with educators on accommodations necessary for student's return to school
- Providing assessment information to Concussion Clinic staff to allow for a more individualized plan of care specifically for the school setting

Asthma Case Management

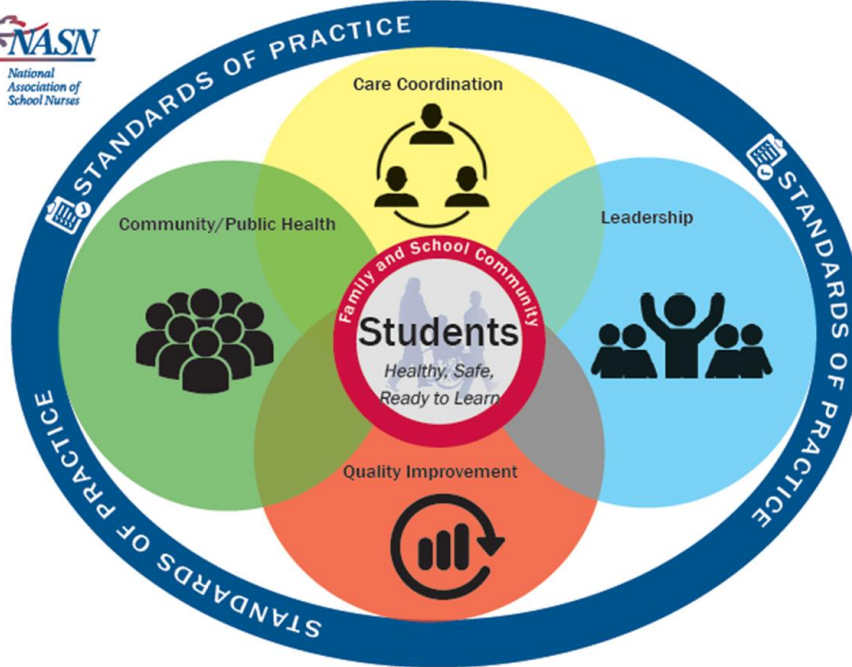
- Continuation of development of stock albuterol program
 - Development of a protocol to have albuterol available in an emergency for those students diagnosed with asthma who do not have access to their prescribed rescue medications.
 - Tracking through SHIS and eCST meaningful health and academic outcomes
 - Collaboration with primary care providers on use and observed trends
-

Exemplars and Giving Back

- McCallum School Nurse - Katie Faehl
- Support for Vaccinate Austin and Austin Public Health Clinics
- LEO Santa @ Linder Elementary



Framework for 21st Century School Nursing Practice™



© National Association of School Nurses, 2015

BETTER HEALTH. BETTER LEARNING.™

Rev. 10/6/16

