



## HIGH SCHOOL EXIT SURVEY REPORT FOR CLASS OF 2011, REAGAN HIGH SCHOOL

The ninth annual Austin Independent School District (AISD) High School Exit Survey was administered online to seniors in every AISD high school during Spring 2011. On each campus, *Project ADVANCE* facilitators primarily were responsible for ensuring all seniors were given the opportunity to complete the survey. Campus-level special education staff identified those seniors cognitively unable to complete the survey. These were the only students deemed ineligible to take the survey. Special education chairs at each campus were tasked with providing eligible special education students with guidance and assistance in completing the survey. Funding for this report was provided by district local funds.

This report contains the results for the Reagan High School Class of 2011. Where available, data are presented from previous senior classes to compare with 2011 responses. In addition, district results are presented alongside campus results for comparison purposes. In total, 3,793 students in the Class of 2011 completed the survey, including 166 students from Reagan. Tests for statistical significance are not included in this report; such analyses will be included in the district report.

Table 1 presents adjusted yearly response rates by campus and by district. The response rates were adjusted such that students not eligible to complete the survey, and those who withdrew from a campus before survey administration, were removed from the total. Next, responses to the multiple choice items from the survey are presented. In some cases, two or more tables appear for a single survey item. In response to feedback from campus administrators and staff during data seminars conducted by the Department of Program Evaluation this school year, more detail is provided for 2011 responses.

**Table 1. High School Exit Survey Adjusted Response Rates, Classes 2009–2011**

	Class of 2009	Class of 2010	Class of 2011
All high schools	83.4%	87.9%	87.3%
Reagan	65.5%	83.1%	76.8%

## INDIVIDUAL ITEM RESPONSES FOR REAGAN HIGH SCHOOL

Seniors' responses to the multiple choice questions were organized into seven general topic areas: postsecondary intentions and family support; high school experiences and campus climate; instruction and technology; postsecondary preparation and advising; and additional results.

### POSTSECONDARY INTENTIONS AND FAMILY SUPPORT

**Table 2. Within a Year After Graduating From High School, What Do You Plan to Do? (Item 8)**

	Reagan		All HS	
	2010	2011	2010	2011
<b>Continue my education</b>	80.8%	88.6%	91.8%	91.1%
<b>Attend a 4-year college</b>	45.9%	36.7%	59.1%	56.8%
<b>Attend a 2-year college</b>	33.6%	38.0%	17.8%	17.6%
<b>Attend a school for a technical certificate</b>	8.2%	6.0%	5.9%	5.0%
<b>Attend a 2-year and eventually transfer to a 4-year college</b>	13.0%	24.1%	19.0%	20.8%
<b>Go into the military</b>	3.4%	6.0%	4.3%	4.3%
<b>Be a full-time parent</b>	2.1%	3.0%	1.2%	1.6%
<b>Work full-time</b>	19.9%	12.0%	11.5%	9.5%
<b>Work part-time</b>	35.6%	31.3%	35.0%	32.3%
<b>Other</b>	.	10.2%	.	6.7%
<b>No plans/Not sure</b>	13.0%	5.4%	5.1%	3.7%

*Notes.* Results for this item may not match prior year reports. Prior to 2011, the results for this question were based on the total number of survey respondents. In 2011, the results are based on the number of respondents completing this particular question and are consistent with the way all questions on the survey are analyzed. Respondents could select more than one option, so percentages may not total 100%. Missing values, denoted by a period, indicate the item was not included on the respective year's survey.

**Table 3. If You Are Not Planning to Pursue Further Education at This Time, What Are Your Primary Reasons? (Item 9)**

	Reagan			All HS
	2009	2010	2011	2011
Cannot afford to attend school	63.6%	34.8%	35.3%	21.7%
Childcare or family responsibilities	36.4%	17.4%	11.8%	11.4%
Don't like attending school	0.0%	13.0%	11.8%	18.0%
Grades/test scores aren't high enough	0.0%	30.4%	23.5%	14.3%
Don't feel academically prepared	27.3%	17.4%	17.6%	15.4%
Need income to support myself/others	36.4%	21.7%	17.6%	21.7%
My goals don't require additional education	.	8.7%	5.9%	18.8%
Other	0.0%	13.0%	23.5%	25.4%

*Note.* Respondents could select more than one option, so percentages may not total 100%. Missing values, denoted by a period, indicate the item was not included on the respective year's survey.

**Table 4a. To What Extent Were Your Parents Involved in the Following School-related Activities? (Item 10)**

<i>Percentage who responded parents were involved at least Occasionally*</i>	Reagan			All HS
	2009	2010	2011	2011
Volunteering at your school	23.6%	18.5%	22.2%	29.0%
Working with you on homework or school projects	36.1%	36.3%	38.8%	42.9%
Helping you decide what classes to take	46.3%	39.0%	39.9%	48.4%
Attending school meetings	28.2%	35.2%	35.4%	43.9%
Communicating with your teachers	47.7%	43.8%	42.9%	44.9%
Participating in school leadership opportunities	14.5%	12.9%	19.7%	17.7%
Attending athletic events	39.1%	35.7%	38.0%	48.2%
Attending academic events and competitions	26.6%	16.0%	25.8%	21.8%
Attending performance events	35.5%	31.3%	30.2%	43.4%
Joining and participating in the PTA	12.6%	6.3%	18.3%	17.0%

\* Response options were *Never, Rarely, Occasionally, and Often.*

**Table 4b. During High School, To What Extent Were Your Parents Involved in the Following School-Related Activities? (Item 10)**

	Reagan				All HS			
	Never	Rarely	Occasionally	Often	Never	Rarely	Occasionally	Often
<b>Volunteering at your school</b>	55.6%	22.2%	14.8%	7.4%	47.8%	23.2%	19.5%	9.5%
<b>Working with you on homework</b>	31.8%	29.5%	31.8%	7.0%	26.4%	30.7%	30.8%	12.1%
<b>Helping you decide which classes to take</b>	30.7%	29.4%	27.6%	12.3%	26.5%	25.1%	30.3%	18.1%
<b>Attending school meetings</b>	37.0%	27.6%	25.2%	10.2%	32.4%	23.7%	25.4%	18.5%
<b>Communicating with your teachers</b>	20.5%	36.6%	31.7%	11.2%	22.6%	32.5%	28.7%	16.2%
<b>Participating in school leadership opportunities</b>	54.9%	25.4%	14.8%	4.9%	60.3%	22.0%	11.9%	5.8%
<b>Attending athletic events and competitions</b>	36.7%	25.3%	19.0%	19.0%	36.7%	15.0%	18.5%	29.8%
<b>Attending academic events and competitions</b>	52.4%	21.8%	19.4%	6.5%	58.5%	19.7%	12.6%	9.2%
<b>Attending performance events</b>	42.8%	27.0%	15.7%	14.5%	38.7%	17.9%	19.0%	24.4%
<b>Joining and participating in the PTA</b>	66.7%	15.0%	10.8%	7.5%	68.5%	14.4%	10.4%	6.6%

Note. Respondents could select more than one option, so percentages may not total 100%.

**Table 5. How Far Did Your Mother, Father, and Older Sibling Go in School? Indicate Their Highest Level of Education. (Item 11)**

	Reagan			All HS		
	Mother	Father	Sibling	Mother	Father	Siblings
<b>Did not finish high school</b>	53.1%	52.7%	17.3%	21.5%	23.3%	7.6%
<b>Graduated from high school or earned a GED</b>	10.9%	11.6%	15.5%	16.0%	15.3%	11.2%
<b>Currently attending a 2-year college or technical school</b>	2.7%	3.4%	6.4%	1.8%	1.1%	8.8%
<b>Currently attending a 4-year college</b>	3.4%	1.4%	13.6%	0.7%	0.6%	18.6%
<b>Attended a 2-yr community/junior college or vocational/technical school, but no degree</b>	2.7%	2.1%	15.5%	5.7%	3.4%	6.3%
<b>Graduated from a 2-yr community/junior college or vocational/technical school</b>	2.0%	0.0%	1.8%	3.5%	2.8%	2.7%
<b>Attended a 4-yr college, but did not complete a degree</b>	0.7%	2.7%	4.5%	5.7%	5.8%	3.1%
<b>Graduated from college</b>	6.8%	4.1%	3.6%	20.9%	18.3%	11.1%
<b>Completed a Master's degree or equivalent</b>	0.7%	0.7%	2.7%	10.9%	11.4%	2.6%
<b>Completed a Ph.D., M.D., or other advanced professional degree</b>	2.0%	2.1%	0.9%	4.3%	6.5%	2.0%
<b>Don't know or does not apply</b>	15.0%	19.2%	18.2%	9.0%	11.4%	26.1%

*Note.* In 2010, “older” was added to describe on which sibling to report. If students had more than one older sibling, they were instructed to provide answers for the one with the highest level of education. If they had no older siblings, they were instructed to select *Does not apply*.

## HIGH SCHOOL EXPERIENCES AND CAMPUS CLIMATE

**Table 6. Including Your Current School, How Many Different High Schools Have You Attended? (Item 7)**

	Reagan			All HS
	2009	2010	2011	2011
<b>1</b>	52.5%	61.6%	64.0%	74.1%
<b>2</b>	27.9%	25.3%	26.4%	18.4%
<b>3 or more</b>	19.7%	13.1%	9.6%	7.5%

Note. Survey indicated that Eastside Memorial, Green and Global were not to be considered different high schools. Also, LASA was not to be considered a different high school than LBJ.

**Table 7a. Please Indicate the Number of Years of High School in Which You Participated in Each of These Extracurricular Activities. (Items 12 and 14)**

Percentage who reported at least 1 year of participation*	Reagan		All HS	
	2010	2011	2010	2011
<b><i>In school</i></b>				
<b>Music</b>	30.8%	26.9%	33.7%	34.2%
<b>Theater</b>	26.6%	15.3%	18.8%	20.0%
<b>Dance</b>	30.5%	19.1%	21.5%	22.6%
<b>Sports</b>	64.3%	55.4%	55.6%	56.3%
<b>Academic clubs, UIL academic competitions</b>	14.1%	10.5%	20.0%	18.8%
<b>Speech/debate</b>	29.8%	25.0%	21.0%	19.8%
<b>Student government</b>	28.6%	15.0%	17.3%	14.4%
<b>Career and technical student organizations</b>	15.8%	8.7%	15.5%	14.1%
<b><i>Outside school</i></b>				
<b>Music</b>	23.8%	19.1%	29.9%	29.5%
<b>Theater</b>	10.6%	2.5%	8.7%	9.1%
<b>Dance</b>	18.1%	16.7%	13.7%	15.6%
<b>Sports</b>	52.1%	54.2%	49.6%	51.2%
<b>Community service/volunteering</b>	37.1%	43.1%	60.2%	58.4%
<b>Environmental project/activities</b>	20.9%	16.8%	25.9%	25.7%
<b>Boy/Girl Scouts</b>	8.7%	8.6%	10.2%	9.0%
<b>Family care</b>	25.5%	19.8%	21.1%	23.0%

Note. Respondents could select more than one option, so percentages may not total 100%.

\* Response options were *Did not participate, 1 year, 2 years, 3 years, or, 4 years.*

**Table 7b. Please Indicate the Number of Years of High School in Which You Participated in Each of These Extracurricular Activities. (Items 12 and 14)**

	Reagan					All HS				
	Did not participate	1 year	2 years	3 years	4 years	Did not participate	1 year	2 years	3 years	4 years
<i>In school</i>										
<b>Music</b>	73.1%	7.7%	6.4%	4.5%	8.3%	65.8%	11.5%	6.0%	4.0%	12.8%
<b>Theater</b>	84.7%	9.3%	5.1%	0.0%	0.8%	80.0%	11.8%	3.9%	1.8%	2.5%
<b>Dance</b>	80.9%	9.2%	5.9%	2.0%	2.0%	77.4%	8.4%	6.5%	3.4%	4.2%
<b>Sports</b>	44.6%	14.0%	9.9%	6.6%	24.8%	43.7%	11.7%	11.8%	8.8%	23.9%
<b>Academic clubs &amp; UIL academic competitions</b>	89.5%	4.6%	2.0%	2.0%	2.0%	81.2%	6.6%	3.8%	3.3%	5.0%
<b>Speech/debate</b>	75.0%	24.1%	0.9%	0.0%	0.0%	80.2%	16.4%	2.0%	0.9%	0.5%
<b>Student government</b>	85.0%	14.3%	0.7%	0.0%	0.0%	85.6%	10.2%	2.0%	0.8%	1.5%
<b>Career and technical student organizations</b>	91.3%	4.3%	1.7%	0.9%	1.7%	85.9%	5.7%	3.9%	2.5%	1.9%
<i>Outside school</i>										
<b>Music</b>	80.9%	5.9%	1.3%	1.3%	10.5%	70.5%	7.4%	4.4%	2.9%	14.9%
<b>Theater</b>	97.5%	0.8%	0.8%	0.0%	0.8%	90.9%	4.4%	1.9%	0.9%	1.9%
<b>Dance</b>	83.3%	6.0%	4.7%	2.0%	4.0%	84.4%	5.1%	4.1%	1.8%	4.6%
<b>Sports</b>	45.8%	14.2%	13.3%	5.8%	20.8%	48.8%	9.0%	9.0%	6.3%	26.9%
<b>Community service/volunteering</b>	56.9%	18.3%	9.2%	3.9%	11.8%	41.6%	15.2%	11.4%	7.0%	24.8%
<b>Environmental projects/activities</b>	83.2%	9.2%	2.5%	2.5%	2.5%	74.3%	10.1%	5.1%	2.3%	8.1%
<b>Boy/Girl Scouts</b>	91.4%	4.6%	2.0%	0.0%	2.0%	91.0%	2.5%	1.5%	0.9%	4.2%
<b>Family care</b>	80.2%	8.6%	0.9%	0.9%	9.5%	77.0%	6.4%	3.5%	1.8%	11.4%

**Table 8a. For Each of These Extracurricular Activities, Did You Spend More Than 10 Hours per Week During Your Senior Year on Them? (Items 13 and 15)**

<i>Percentage indicating they spent more than 10 hours per week on each activity</i>	<b>Reagan 2011</b>	<b>All HS 2011</b>
<b><i>In school</i></b>		
<b>Music</b>	7.8%	7.6%
<b>Theater</b>	0.9%	2.9%
<b>Dance</b>	2.6%	4.2%
<b>Sports</b>	21.7%	24.4%
<b>Academic clubs and UIL academic competitions</b>	1.3%	2.4%
<b>Speech/debate</b>	0.0%	0.9%
<b>Student government</b>	0.7%	0.7%
<b>Career and technical student organizations</b>	0.0%	2.4%
<b><i>Outside school</i></b>		
<b>Music</b>	5.2%	6.8%
<b>Theater</b>	1.7%	1.6%
<b>Dance</b>	2.0%	2.9%
<b>Sports</b>	15.3%	18.9%
<b>Community service/volunteering</b>	2.6%	5.6%
<b>Environmental project/activities</b>	0.0%	1.9%
<b>Boy/Girl Scouts</b>	0.7%	1.2%
<b>Family care</b>	6.8%	7.8%

*Note.* Respondents could select more than one option, so percentages may not total 100%.

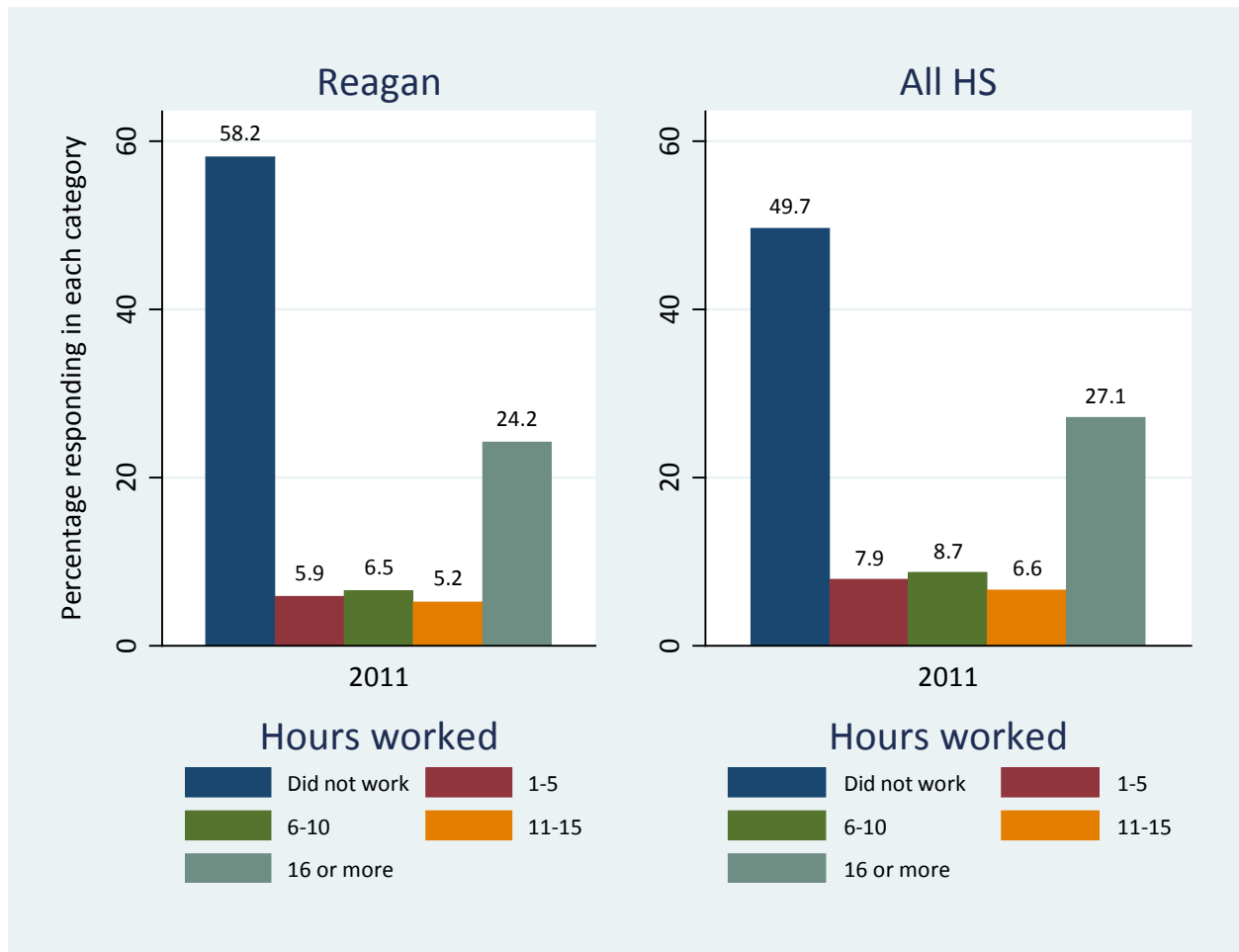


**Table 8b. Indicate the Average Number of Hours Per Week During Your Senior Year That You Participated in the Following Extra-Curricular Activities (Includes Practices, Rehearsals, and Competitions) (Items 13 and 15)**

	Reagan					All HS				
	Did not participate	1-5 hours	6-10 hours	11-15 hours	16+ hours	Did not participate	1-5 hours	6-10 hours	11-15 hours	16+ hours
<b><i>In school</i></b>										
<b>Music</b>	80.4%	6.5%	5.2%	2.6%	5.2%	75.3%	9.8%	7.3%	3.1%	4.6%
<b>Theater</b>	87.7%	8.8%	2.6%	0.0%	0.9%	87.5%	7.4%	2.3%	1.4%	1.4%
<b>Dance</b>	83.6%	11.8%	2.0%	0.7%	2.0%	83.6%	8.6%	3.6%	1.8%	2.4%
<b>Sports</b>	47.5%	18.3%	12.5%	8.3%	13.3%	53.0%	11.4%	11.2%	10.5%	14.0%
<b>Academic clubs &amp; UIL academic competitions</b>	92.7%	4.0%	2.0%	0.7%	0.7%	86.5%	8.4%	2.7%	1.0%	1.4%
<b>Speech/debate</b>	85.0%	13.3%	1.8%	0.0%	0.0%	88.2%	9.3%	1.6%	0.5%	0.4%
<b>Student government</b>	85.1%	13.5%	0.7%	0.0%	0.7%	88.7%	9.1%	1.5%	0.4%	0.2%
<b>Career and technical student organizations</b>	91.2%	4.4%	4.4%	0.0%	0.0%	88.8%	6.2%	2.5%	1.2%	1.2%
<b><i>Outside school</i></b>										
<b>Music</b>	80.0%	9.7%	5.2%	2.6%	2.6%	71.9%	15.4%	5.8%	2.3%	4.4%
<b>Theater</b>	94.0%	3.4%	0.9%	0.9%	0.9%	91.8%	5.0%	1.6%	0.6%	0.9%
<b>Dance</b>	85.9%	9.4%	2.7%	0.7%	1.3%	85.9%	8.0%	3.1%	1.1%	1.8%
<b>Sports</b>	46.8%	22.6%	15.3%	7.3%	8.1%	52.5%	16.0%	12.6%	6.7%	12.2%
<b>Community service/volunteering</b>	59.7%	31.8%	5.8%	1.9%	0.6%	48.4%	36.2%	9.8%	2.4%	3.2%
<b>Environmental projects/activities</b>	86.2%	12.9%	0.9%	0.0%	0.0%	78.6%	16.5%	3.0%	0.9%	1.0%
<b>Boy/Girl Scouts</b>	93.4%	5.3%	0.7%	0.0%	0.7%	92.5%	5.2%	1.0%	0.6%	0.6%
<b>Family care</b>	81.4%	9.3%	2.5%	0.8%	5.9%	79.4%	8.2%	4.6%	2.2%	5.5%

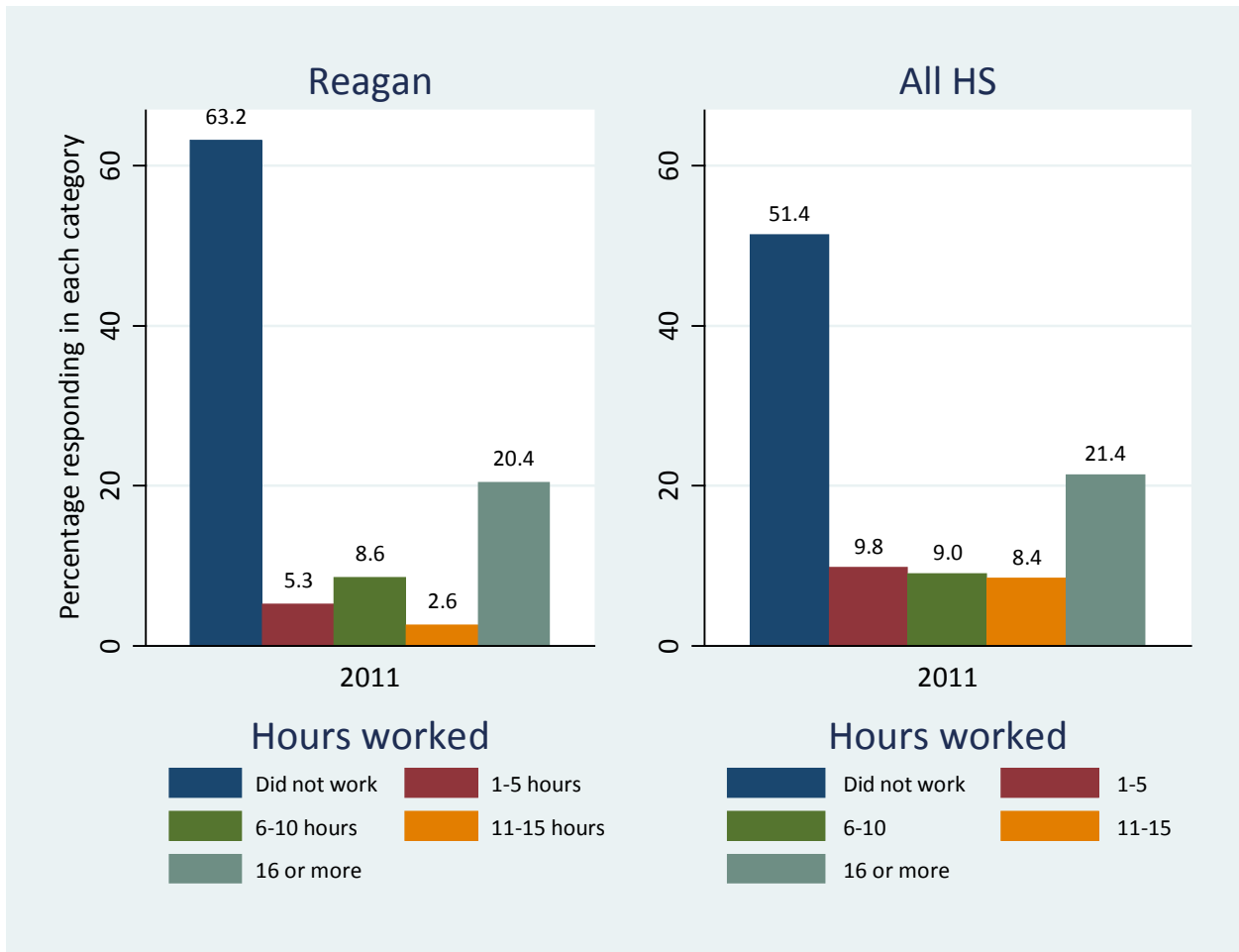
Note. Respondents could select more than one option, so percentages may not total 100%.

**Figure 1. Indicate the Average Number of Hours Per Week That You Worked During Last Summer. (Item 16a)**



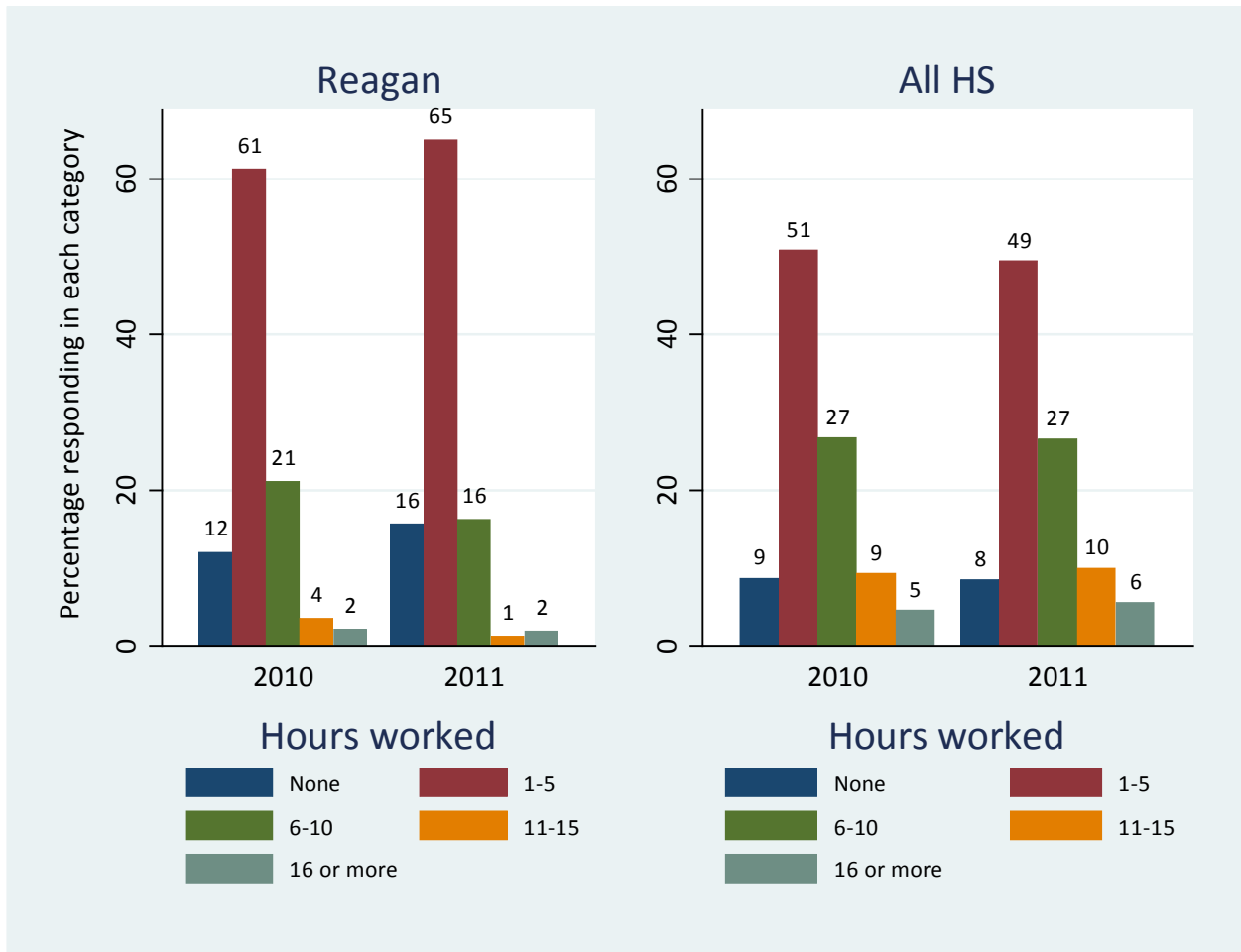
Note. Changes to this question preclude accurate comparisons to prior years.

**Figure 2. Indicate the Average Number of Hours Per Week That You Worked During Your Senior Year. (Item 16b)**



Note. Changes to this question preclude accurate comparisons to prior years.

**Figure 3. Thinking Back on Your Years in High School, How Many Hours per Week Did You Typically Spend Studying, Doing Research, or Completing Homework Assignments Outside of Class? (Item 17)**



Note. Results were rounded to nearest whole number, so percentages may not total 100%.

**Table 9a. Mark the Answer That Best Indicates How You Feel (Item 18)**

<i>Percentage who responded sometimes or always*</i>	<b>Reagan</b>		<b>All HS</b>	
	<b>2010</b>	<b>2011</b>	<b>2010</b>	<b>2011</b>
<b>I can do even the hardest schoolwork if I try</b>	89.0%	88.8%	91.8%	91.6%
<b>I enjoy doing my schoolwork</b>	68.5%	77.9%	58.6%	59.9%
<b>I feel/felt well prepared for TAKS</b>	86.1%	91.0%	89.3%	90.7%
<b>I try hard to do my best work</b>	89.7%	95.8%	89.5%	90.7%
<b>I feel successful in my schoolwork</b>	91.0%	94.3%	90.3%	89.6%
<b>I can reach the goals I set for myself</b>	91.5%	99.2%	95.4%	94.7%
<b>My homework helps me learn things I need to know</b>	78.6%	81.3%	75.9%	76.2%
<b>I know how I'm doing in school</b>	90.2%	93.3%	92.2%	92.3%
<b>My schoolwork makes me think about things in new ways</b>	75.5%	81.8%	68.4%	69.2%
<b>I have fun learning in my classes</b>	81.9%	85.1%	76.5%	75.9%
<b>My teachers connect what I am learning to my life outside of the classroom</b>	69.7%	72.0%	66.1%	64.8%
<b>I like to come to school</b>	81.3%	87.3%	71.4%	72.5%

\*Response options were *Never, Not a lot, Sometimes, Always, and Don't know.*

**Table 9b. Mark the Answer That Best Indicates How You Feel (Item 18)**

	Reagan					All HS				
	Never	Not a lot	Sometimes	Always	Don't know	Never	Not a lot	Sometimes	Always	Don't know
I can do even the hardest schoolwork if I try	3.1%	8.0%	51.2%	36.4%	1.2%	2.7%	5.6%	42.4%	47.9%	1.5%
I enjoy doing my schoolwork	3.3%	18.7%	61.8%	15.4%	0.8%	11.2%	28.6%	50.6%	9.0%	0.5%
I feel/felt well prepared for TAKS	2.5%	6.2%	39.8%	48.4%	3.1%	2.9%	6.2%	23.5%	65.4%	2.0%
I try hard to do my best work	1.7%	2.5%	46.3%	48.8%	0.8%	2.3%	6.9%	43.6%	46.6%	0.6%
I feel successful in my schoolwork	0.6%	5.0%	56.5%	36.0%	1.9%	2.3%	8.0%	54.6%	34.3%	0.9%
I can reach the goals I set for myself	0.0%	0.8%	45.5%	52.0%	1.6%	1.6%	3.6%	37.4%	56.1%	1.3%
My homework helps me learn things I need to know	3.1%	15.0%	51.3%	27.5%	3.1%	6.4%	17.1%	47.4%	27.8%	1.3%
I know how I'm doing in school	2.4%	4.1%	33.3%	57.7%	2.4%	2.0%	5.6%	28.7%	62.6%	1.1%
My schoolwork makes me think about things in new ways	3.1%	14.3%	47.8%	30.4%	4.3%	8.3%	22.0%	46.9%	21.3%	1.4%
I have fun learning in my classes	2.4%	12.2%	65.0%	18.7%	1.6%	5.7%	18.2%	58.1%	17.3%	0.7%
My teachers connect what I am learning to my life outside of the classroom	6.3%	20.1%	47.8%	20.1%	5.7%	9.2%	25.5%	46.9%	16.8%	1.5%
I like to come to school	4.1%	8.3%	50.4%	34.7%	2.5%	10.3%	16.8%	49.8%	21.9%	1.1%

**INSTRUCTION AND TECHNOLOGY**

**Table 10a. How Well Did Your High School Help You to Actively Develop Knowledge and Skills in the Following Areas? (Item 19)**

<i>Percentage who responded Somewhat well or Very well*</i>	Reagan			All HS
	2009	2010	2011	2011
<b>Teamwork</b>	92.0%	88.9%	98.8%	90.6%
<b>Creative thinking</b>	91.1%	91.7%	95.1%	90.6%
<b>Problem solving</b>	84.8%	90.9%	93.8%	92.4%
<b>Conflict resolution</b>	84.7%	82.5%	86.2%	84.2%
<b>Personal health/fitness</b>	81.3%	84.2%	89.9%	82.9%
<b>Time management</b>	81.3%	81.1%	90.7%	83.0%
<b>Technology</b>	83.0%	81.1%	88.8%	85.6%

\* Response options were *Not well, Somewhat well, and Very well.*

**Table 10b. How Well Did Your High School Help You to Actively Develop Knowledge and Skills in the Following Areas? (Item 19)**

	Reagan			All HS		
	Not well	Somewhat well	Very well	Not well	Somewhat well	Very well
<b>Teamwork</b>	1.3%	53.1%	45.6%	9.4%	47.9%	42.7%
<b>Creative thinking</b>	4.9%	59.0%	36.1%	9.4%	47.4%	43.2%
<b>Problem solving</b>	6.3%	53.8%	40.0%	7.6%	46.9%	45.5%
<b>Conflict resolution</b>	13.8%	55.3%	30.9%	15.8%	49.5%	34.7%
<b>Personal health/fitness</b>	10.1%	51.6%	38.4%	17.1%	47.6%	35.3%
<b>Time management</b>	9.3%	63.6%	27.1%	17.0%	49.2%	33.8%
<b>Technology</b>	11.3%	61.9%	26.9%	14.4%	50.8%	34.8%

**Table 11a. Rate the Quality of Instruction You Feel You Received in the Following Areas. (Item 20)**

<i>Percentage who responded Good or Excellent*</i>	Reagan			All HS
	2009	2010	2011	2011
English Language Arts	78.4%	88.3%	84.4%	82.3%
Mathematics	53.2%	70.3%	46.7%	68.5%
Science	58.0%	68.6%	60.8%	68.6%
Social Studies	69.6%	81.4%	77.0%	79.2%
Computer/Technology	61.3%	72.3%	69.7%	67.5%
Foreign Language	69.4%	70.4%	64.3%	59.8%
Performing/Fine Arts	65.8%	68.9%	66.4%	73.2%
Career and Technical (CTE)	.	64.8%	52.3%	58.3%

Note. Missing values, denoted by a period, indicate the item was not included on the respective year's survey.

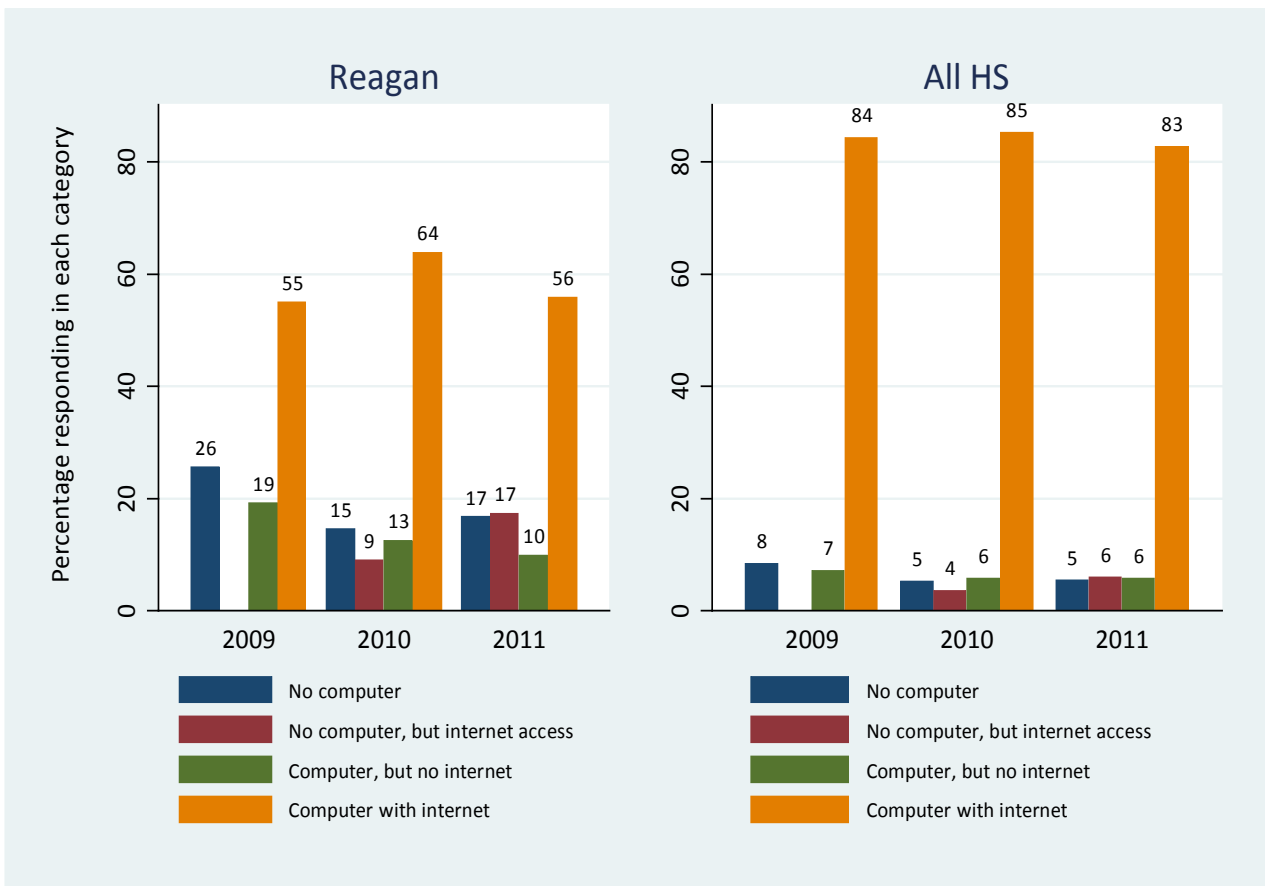
\*Response options included *Excellent, Good, Fair, and Poor*.

**Table 11b. Rate the Quality of Instruction You Feel You Received in the Following Areas. (Item 20)**

	Reagan				All HS			
	Excellent	Good	Fair	Poor	Excellent	Good	Fair	Poor
English Language Arts	36.3%	48.1%	15.6%	0.0%	42.7%	39.6%	14.6%	3.0%
Mathematics	16.4%	30.3%	38.5%	14.8%	31.4%	37.2%	22.3%	9.2%
Science	19.6%	41.1%	34.8%	4.4%	28.7%	40.0%	25.0%	6.3%
Social Studies	32.0%	45.1%	22.1%	0.8%	37.1%	42.1%	18.0%	2.8%
Computer/Technology	26.5%	43.2%	25.8%	4.5%	27.5%	39.9%	25.5%	7.0%
Foreign Language	14.8%	49.6%	28.7%	7.0%	24.7%	35.1%	27.1%	13.1%
Performing/Fine Arts	20.4%	46.0%	27.0%	6.6%	39.7%	33.5%	21.3%	5.6%
Career and Technical	10.5%	41.9%	39.5%	8.1%	23.9%	34.5%	31.5%	10.2%



**Figure 4. Which of the Following Describes Your Computer and Internet Access at Home?  
 (Item 21)**



Note. Results were rounded to nearest whole number, so percentages may not total 100%.

**Table 12a. How Frequently Do You Use a Computer or Other Internet-Capable Devices (For Example, a Mobile Phone, iTouch, or iPad)? (Item 22)**

<i>Percentage who responded At least once a week or more*</i>	Reagan			All HS
	2009	2010	2011	2011
At home?	60.4%	72.7%	76.7%	88.1%
At school?	78.6%	77.2%	85.4%	84.9%
To present material in class, for example, using PowerPoint?	27.3%	35.2%	39.2%	30.4%
To type a paper or class assignment?	55.0%	50.3%	44.1%	58.0%
To search the Internet to complete class-related assignments?	55.5%	62.8%	59.7%	68.8%
To research college/career choices?	48.2%	54.9%	54.2%	52.4%
To complete online forms or applications for college/employment?	40.5%	47.9%	50.0%	48.1%
To communicate with teachers (e.g., email, IM, etc.)?	25.2%	24.8%	32.8%	33.9%
To monitor grades/progress in school?	26.8%	37.8%	33.1%	61.0%

\*Responses were *Never, Less than once a week, Once or twice a week, Every day or almost every day.*

**Table 12b. How Frequently Do You Use a Computer or Other Internet-Capable Devices (For Example, a Mobile Phone, iTouch, or iPad)? (Item 22)**

	Reagan				All HS			
	Never	Less than once a week	Once or twice a week	Every day or almost every day	Never	Less than once a week	Once or twice a week	Every day or almost every day
<b>At home?</b>	13.8%	9.4%	18.9%	57.9%	6.8%	5.1%	12.2%	76.0%
<b>At school?</b>	3.3%	11.4%	30.9%	54.5%	3.2%	11.9%	27.4%	57.5%
<b>To present material in class, for example, using PowerPoint?</b>	15.8%	44.9%	29.7%	9.5%	15.2%	54.5%	20.3%	10.1%
<b>To type a paper or class assignment?</b>	5.9%	50.0%	36.4%	7.6%	6.3%	35.8%	40.1%	17.9%
<b>To search the Internet to complete class-related assignments?</b>	6.9%	33.3%	44.7%	15.1%	5.3%	26.0%	41.2%	27.5%
<b>To research college/career choices?</b>	8.3%	37.5%	39.2%	15.0%	10.5%	37.1%	33.5%	18.9%
<b>To complete online forms or applications for college/employment?</b>	9.4%	40.6%	36.9%	13.1%	12.5%	39.3%	31.4%	16.7%
<b>To communicate with teachers (e.g., email, IM, Facebook, etc.)?</b>	34.4%	32.8%	20.5%	12.3%	29.4%	36.6%	18.9%	15.0%
<b>To monitor grades/progress in school?</b>	35.0%	31.9%	17.5%	15.6%	18.7%	20.3%	30.0%	31.0%

**Table 13a. Indicate How Much You Agree With Each of the Following Statements About Technology Use at School: (Item 23)**

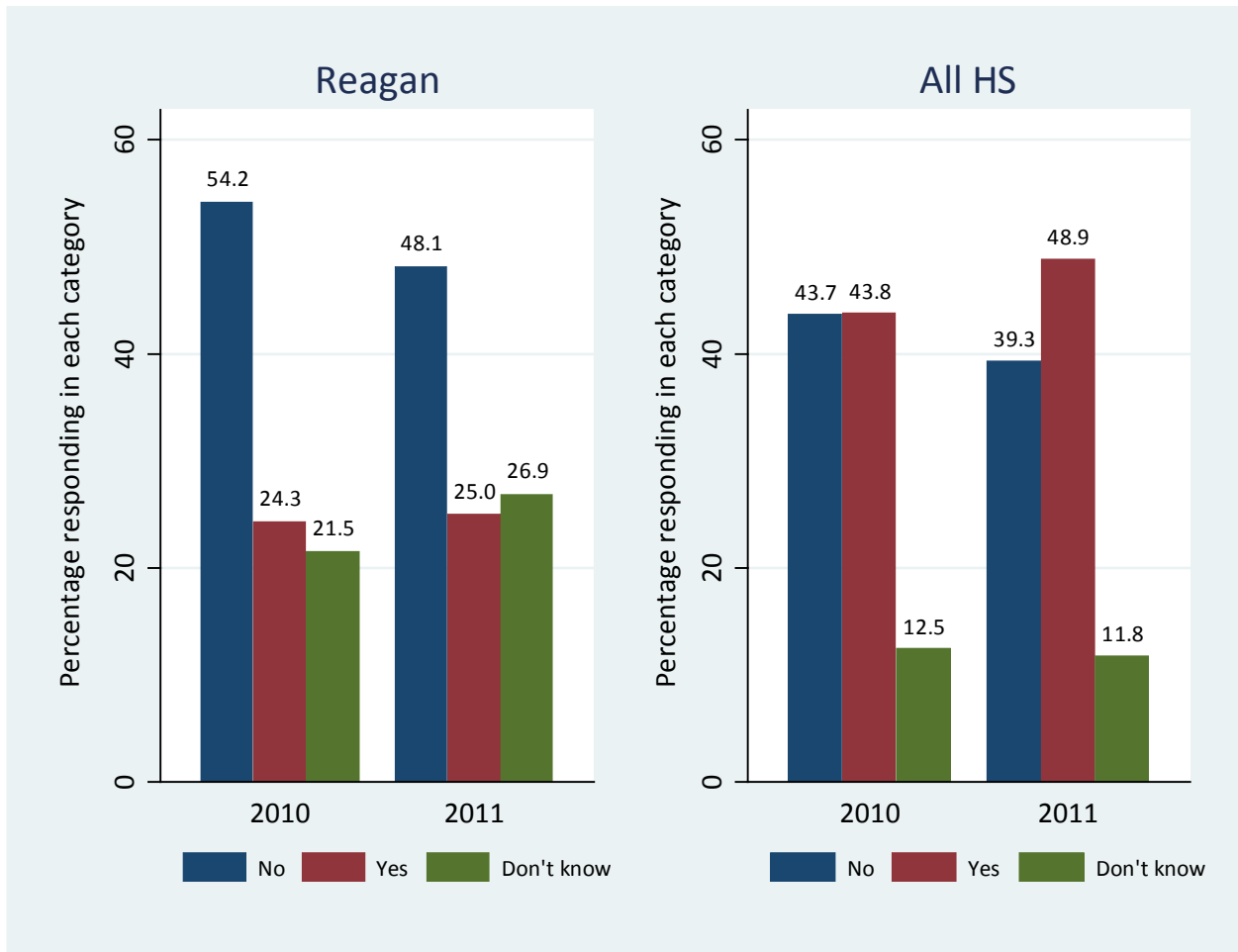
<i>Percentage who responded Agree or Strongly agree*</i>	Reagan		All HS	
	2010	2011	2010	2011
My teachers effectively use the technology resources that are available.	90.2%	94.0%	90.4%	90.9%
I would like to use more electronic communication with my classmates as part of my schoolwork.	90.9%	88.1%	83.1%	77.1%
I would like to use more electronic communication with my teachers.	84.8%	80.6%	78.8%	72.6%
I would like to use more online resources.	87.5%	89.1%	84.4%	80.4%

\* Responses were *Strongly agree, Agree, Disagree, Strongly disagree, and Don't know/unsure.*

**Table 13b. Indicate How Much You Agree With Each of the Following Statements About Technology Use at School: (Item 23)**

	Reagan				All HS			
	Strongly agree	Agree	Disagree	Strongly disagree	Strongly agree	Agree	Disagree	Strongly disagree
My teachers effectively use the technology resources that are available.	28.9%	65.1%	4.7%	1.3%	28.4%	62.5%	6.8%	2.3%
I would like to use more electronic communication with my classmates as part of my schoolwork.	22.9%	65.1%	9.2%	2.8%	28.0%	49.2%	18.5%	4.3%
I would like to use more electronic communication with my teachers.	23.9%	56.7%	17.2%	2.2%	23.9%	48.7%	23.0%	4.5%
I would like to use more online resources in my classes.	20.0%	69.1%	9.1%	1.8%	28.2%	52.2%	15.4%	4.2%

Figure 5. Do Your Parents Use ParentConnect / GradeSpeed to Monitor Your Grades? (Item 24)



**Table 14a. How Frequently Do You Log onto Naviance / Family Connection for the Following Activities? (Item 25)**

<i>Percentage who responded Once a week or more*</i>	Reagan		All HS	
	2010	2011	2010	2011
College search	22.2%	21.4%	18.0%	20.4%
Resume building	9.8%	11.6%	8.7%	9.5%
Career exploration	14.2%	12.7%	11.9%	13.3%
College visit sign up	11.8%	13.2%	12.1%	13.4%
Class rank and GPA inquiry	14.1%	12.7%	15.4%	17.9%
Counselor directed activities, such as personality questionnaires	12.7%	8.5%	8.2%	9.8%
Other	12.6%	12.9%	10.7%	14.7%

\* Response options were *Never, Less than once a week, Once or twice a week, and Every day or almost every day.*

**Table 14b. How Frequently Do You Log onto Naviance / Family Connection for the Following Activities? (Item 25)**

	Reagan				All HS			
	Never	Less than once a week	Once or twice a week	Every day or almost every day	Never	Less than once a week	Once or twice a week	Every day or almost every day
College search	39.6%	39.0%	17.6%	3.8%	37.2%	42.4%	17.0%	3.4%
Resume building	54.5%	33.9%	10.7%	0.8%	55.1%	35.4%	8.0%	1.5%
Career exploration	54.1%	33.1%	10.8%	1.9%	49.7%	37.0%	10.6%	2.7%
College visit sign up	51.2%	35.5%	11.6%	1.7%	45.9%	40.8%	11.2%	2.2%
Class rank and GPA inquiry	53.8%	33.5%	9.5%	3.2%	39.1%	43.0%	14.5%	3.4%
Counselor directed activities, such as personality or career questionnaires	59.3%	32.2%	6.8%	1.7%	53.3%	36.9%	7.7%	2.1%
Other	68.2%	18.9%	8.3%	4.5%	57.8%	27.5%	10.2%	4.5%

**POSTSECONDARY PREPARATION AND ADVISING**

**Table 15. At What Time in Your Life Did You Start Thinking about College as a Possibility After High School? (Item 27)**

	Reagan			All HS
	2009	2010	2011	2011
As long ago as I can remember	25.2%	18.3%	17.0%	36.9%
In elementary school	4.5%	4.9%	9.4%	9.1%
In middle/junior high school	27.0%	24.6%	24.5%	21.0%
In high school	39.6%	48.6%	44.7%	30.7%
I've never thought about college as an option after high school	3.6%	3.5%	4.4%	2.2%

**Table 16a. High School Preparation for Post-Graduation Opportunities (Item 28)**

Percentage who responded Somewhat well or Very well	Reagan			All HS
	2009	2010	2011	2011
How well prepared were you to plan your high school course selections?	88.9%	86.0%	89.9%	90.6%
How well prepared were you to meet your college and career goals?	80.2%	76.8%	85.1%	85.4%
How well prepared have you been for the college/technical/vocational school application process?	73.4%	73.5%	79.6%	81.3%
How well informed are/were you about obtaining financial aid for education after high school (whether or not you applied)?	80.2%	83.6%	85.1%	84.2%

Note. Response options were *Very well*, *Somewhat well*, and *Not well*.

**Table 16b. High School Preparation for Post-Graduation Opportunities (Item 28)**

	Reagan			All HS		
	Very well	Somewhat well	Not well	Very well	Somewhat well	Not well
How well prepared were you to plan your high school course selections?	22.0%	67.9%	10.1%	41.5%	49.1%	9.4%
How well prepared were you to meet your college and career goals?	13.2%	71.9%	14.9%	36.0%	49.4%	14.6%
How well prepared have you been for the college/technical/vocational school application process?	16.6%	63.1%	20.4%	32.5%	48.8%	18.7%
How well informed have you been about obtaining financial aid for education after high school (whether or not you applied)?	35.5%	49.6%	14.9%	39.3%	44.9%	15.8%



**Table 17. For Each of the Subjects Below, Indicate How Prepared You Feel to Complete College-Level Coursework. (Item 29)**

	Reagan				All HS			
	English/ Language Arts	Math	Science	Social Studies	English/ Language Arts	Math	Science	Social Studies
<b>I am not prepared for regular or advanced college-level coursework</b>	6.4%	14.2%	11.5%	7.6%	3.9%	8.3%	6.7%	4.3%
<b>I will have to take remedial or developmental classes to prepare for college-level coursework</b>	28.2%	42.5%	36.5%	30.3%	18.1%	28.1%	25.0%	18.0%
<b>I am prepared for any college-level coursework</b>	55.8%	23.3%	36.5%	49.6%	70.4%	54.3%	58.6%	69.8%
<b>I do not know if I am prepared for college-level coursework</b>	9.6%	20.0%	15.4%	12.6%	7.6%	9.3%	9.7%	7.9%

**Table 18. How Did You Prepare for Continuing Education? (Item 30)**

	Reagan		All HS	
	2010	2011	2010	2011
<b>Took Advanced Placement or International Baccalaureate classes</b>	19.4%	37.6%	47.5%	53.0%
<b>Visited college campuses</b>	30.9%	38.9%	55.1%	56.6%
<b>Attended college fairs</b>	37.4%	37.6%	51.1%	47.1%
<b>Met with counselor or Project Advance staff to discuss college plans and processes</b>	.	51.6%	.	52.0%
<b>Met with a college representative/recruiter at my high school</b>	.	30.6%	.	44.7%
<b>Completed and submitted a FAFSA</b>	36.7%	45.9%	51.9%	56.7%
<b>Completed and submitted a scholarship application</b>	25.9%	36.9%	41.4%	44.3%
<b>Took college entrance tests</b>	48.9%	54.8%	68.2%	69.5%
<b>Took test prep classes</b>	22.3%	37.6%	39.6%	47.3%
<b>Completed or are enrolled in ACC courses</b>	23.7%	28.7%	34.6%	38.3%
<b>Ordered and submitted transcripts</b>	24.5%	33.8%	47.7%	54.2%
<b>Senior ACC application process</b>	37.4%	40.1%	39.7%	40.2%
<b>Other college-level courses</b>	4.3%	5.7%	6.3%	8.2%
<b>None of the above</b>	15.8%	13.4%	10.8%	8.2%

*Note.* Results for this item may not match prior year reports. Prior to 2011, the results for this question were based on the total number of survey respondents. In 2011, the results are based on the number of respondents completing this particular question and are consistent with the way all questions on the survey are analyzed. Respondents could select more than one option, so percentages may not total 100%. Missing values, denoted by a period, indicate the item was not included on the respective year's survey.

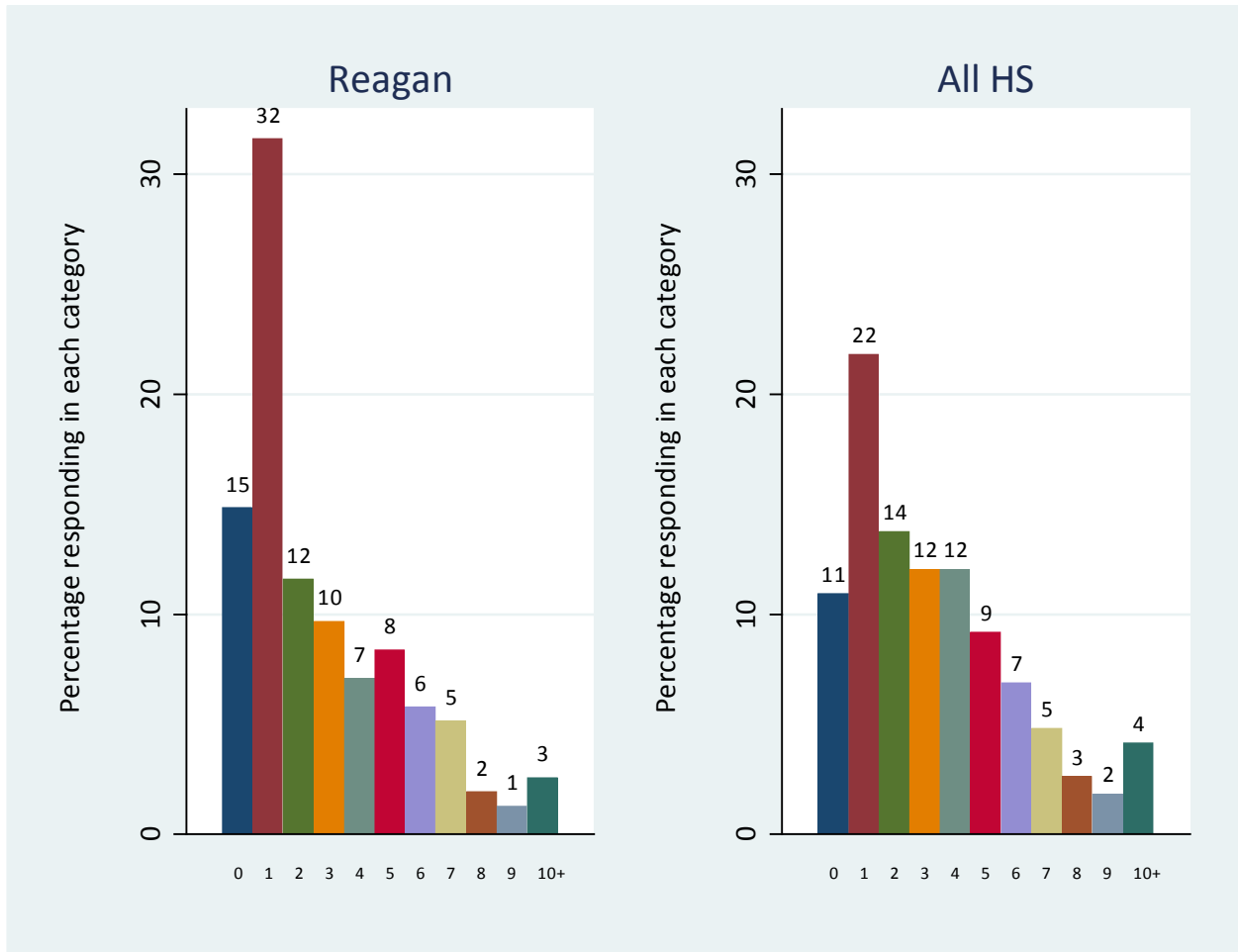
**Table 19a. Have You Applied to the Following Types of Postsecondary Institutions? (Items 31, 32, and 33)**

	Reagan		All HS	
	2010	2011	2010	2011
Have you applied to a 2-year college	66.2%	83.3%	57.2%	61.7%
Have you applied to a 4-year college?	53.7%	54.2%	69.1%	71.5%
Have you applied to a business/technical/vocational school?	18.2%	11.7%	14.5%	12.2%

**Table 19b. To How Many Postsecondary Institutions Have You *Applied*? (Items 31, 32, and 33)**

	Reagan		All HS	
	2010	2011	2010	2011
None	18.8%	14.8%	12.0%	10.9%
1 to 3	49.3%	52.9%	47.2%	47.6%
4 or more	31.9%	32.3%	40.9%	41.5%

**Figure 6. To How Many Postsecondary Institutions Have You *Applied*? (Items 31, 32, and 33)**

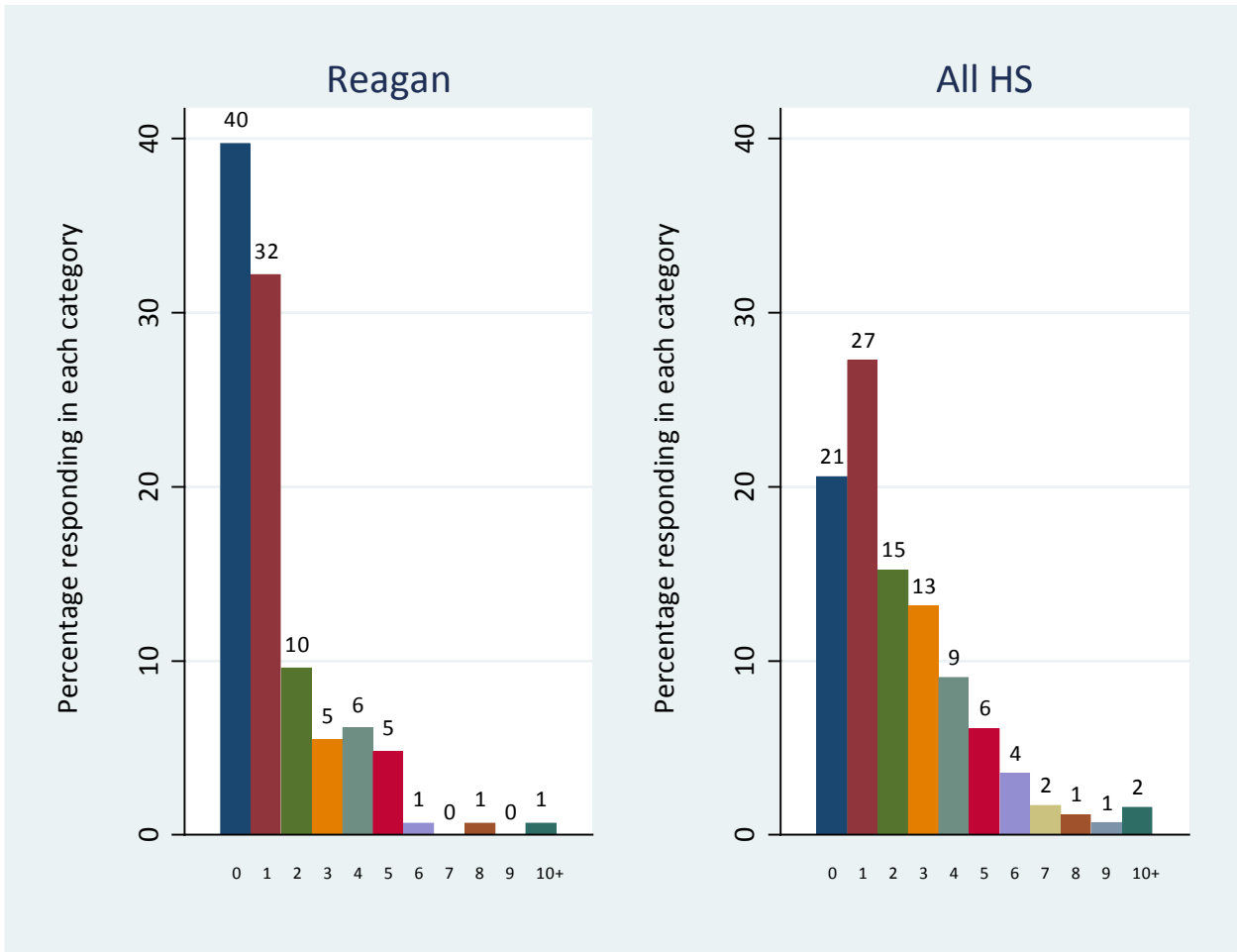


Note. Results were rounded to the nearest whole number, so percentages may not total 100%.

**Table 20. To How Many Postsecondary Institutions Have You Been *Accepted*? (Items 34, 35, and 36)**

	Reagan		All HS	
	2010	2011	2010	2011
Have you been accepted to a 2-year college?	38.6%	54.2%	46.5%	51.9%
Have you been accepted to a 4-year college?	35.9%	24.6%	59.4%	58.8%
Have you been accepted to a business/technical/vocational school?	12.5%	4.1%	9.2%	8.3%

**Figure 7. To How Many Postsecondary Institutions Have You *Been Accepted*? (Items 34, 35, and 36)**



Note. Results were rounded to the nearest whole number, so percentages may not total 100%.

**Table 21. Indicate Whether the Following People Helped You With Any of the Activities Listed Below. (Item 37)**

	Reagan				All HS			
	Advisory	College and Career Center Advisor	School counselor	Teacher	Advisory	College and Career Center Advisor	School counselor	Teacher
<b>Helped select courses for work or college</b>	25.8%	41.3%	32.9%	30.3%	21.5%	27.2%	49.1%	27.5%
<b>Encouraged to take AP/honors courses</b>	21.3%	12.9%	23.9%	38.1%	20.8%	14.3%	36.1%	50.4%
<b>Encouraged to continue education</b>	47.1%	48.4%	43.9%	56.8%	44.7%	36.3%	52.1%	57.4%
<b>Talked about colleges/schools</b>	27.7%	36.1%	19.4%	32.3%	27.1%	34.2%	37.8%	35.4%
<b>Discussed careers</b>	30.3%	41.3%	27.7%	37.4%	28.5%	30.8%	33.6%	32.3%
<b>Encouraged to apply to multiple schools</b>	23.9%	38.7%	16.1%	27.1%	28.7%	36.5%	38.2%	33.0%
<b>Helped complete applications for college</b>	18.1%	47.1%	21.3%	22.6%	13.6%	34.7%	26.0%	18.9%
<b>Helped with financial aid (FAFSA and/or scholarships)</b>	14.2%	38.7%	12.3%	12.9%	13.2%	36.3%	24.3%	14.8%
<b>Helped choose college</b>	26.5%	41.9%	23.2%	32.3%	15.0%	26.8%	22.8%	22.7%
<b>Helped plan for college expenses</b>	16.8%	35.5%	9.7%	19.4%	14.4%	31.1%	22.2%	15.3%
<b>Helped with college application essays or personal statements</b>	18.7%	44.5%	16.8%	38.7%	13.6%	26.5%	20.6%	37.2%
<b>I never talked to this person about college or careers.</b>	14.8%	14.8%	18.7%	14.8%	26.8%	23.1%	22.9%	15.6%

*Note.* Results for this item may not match prior year reports. Prior to 2011, the results for this question were based on the total number of survey respondents. In 2011, the results are based on the number of respondents completing this particular question and are consistent with the way all questions on the survey are analyzed. Respondents could select more than one option, so percentages may not total 100%.

**Table 22. In Which of These Programs Did You Participate? (Item 38)**

	Reagan		All HS	
	2010	2011	2010	2011
<b>Advancement via Individual Determination (AVID)</b>	15.6%	4.7%	8.5%	7.4%
<b>ACC Early College Start/Dual credit</b>	.	13.4%	.	35.5%
<b>ACC College Connections</b>	15.6%	22.8%	20.0%	19.4%
<b>Immigrant College Access</b>	2.3%	3.4%	2.7%	3.4%
<b>None of the above</b>	39.1%	65.1%	54.4%	48.9%

*Note.* Results for this item may not match prior year reports. Prior to 2011, the results for this question were based on the total number of survey respondents. In 2011, the results are based on the number of respondents completing this particular question and are consistent with the way all questions on the survey are analyzed. Respondents could select more than one option, so percentages may not total 100%. Missing values, denoted by a period, indicate the item was not included on the respective year's survey.

**Table 23. If You Participated in Any of The Programs from Item 38, Indicate Whether the Programs Helped You With Any of the Activities Listed Below. (Item 39)**

	Reagan				All HS			
	AVID	ACC-Early College Start / Dual Credit	ACC-College Connections	Immigrant College Access Program	AVID	ACC-Early College Start / Dual Credit	ACC-College Connections	Immigrant College Access Program
Helped select courses for work or college	14.8%	21.7%	21.2%	6.7%	29.0%	37.6%	17.2%	9.2%
Encouraged to take AP/honors courses	22.2%	17.4%	18.2%	3.3%	30.9%	28.4%	9.0%	4.8%
Encouraged to continue education	22.2%	30.4%	24.2%	6.7%	34.1%	36.6%	18.1%	10.6%
Talked about colleges/schools	22.2%	17.4%	27.3%	6.7%	33.3%	21.0%	14.7%	9.7%
Discussed careers	18.5%	26.1%	24.2%	10.0%	32.0%	22.9%	15.0%	10.3%
Encouraged to apply to multiple schools	14.8%	8.7%	21.2%	6.7%	30.3%	17.6%	12.3%	11.2%
Helped complete applications for college	18.5%	17.4%	30.3%	10.0%	27.4%	14.6%	12.5%	9.7%
Helped with financial aid (FAFSA and/or scholarships)	7.4%	8.7%	30.3%	6.7%	24.6%	13.9%	12.2%	12.1%
Helped choose college	18.5%	17.4%	27.3%	6.7%	26.5%	17.1%	11.7%	8.6%
Helped plan for college expenses	18.5%	8.7%	27.3%	6.7%	26.7%	15.9%	12.3%	9.7%
Helped with college application essays or personal statements	25.9%	13.0%	21.2%	6.7%	29.3%	15.1%	10.2%	8.4%

*Note.* Results for this item may not match prior year reports. Prior to 2011, the results for this question were based on the total number of survey respondents. In 2011, the results are based on the number of respondents completing this particular question and are consistent with the way all questions on the survey are analyzed. Respondents could select more than one option, so percentages may not total 100.



**Table 24. Which of the Following Did a Family Member Do to Help You Prepare for Life After High School Graduation? (Item 40)**

	Reagan 2011	All HS 2011
Talked to you about career and/or college options	71.2%	81.6%
Talked to you about finances	58.3%	71.1%
Talked to you about your responsibilities as an adult	69.9%	77.5%
Talked to you about what a career and/or college would be like	54.5%	70.1%
Helped you with financial aid (FAFSA and/or scholarships)	41.0%	57.0%
Helped you complete applications for college or vocational/technical schools	25.0%	46.6%
Encouraged you to apply to several different colleges	51.3%	60.9%
No one in my family talked to me about or helped me with these things.	14.1%	10.0%

*Note.* Results for this item may not match prior year reports. Prior to 2011, the results for this question were based on the total number of survey respondents. In 2011, the results are based on the number of respondents completing this particular question and are consistent with the way all questions on the survey are analyzed. Respondents could select more than one option, so percentages may not total 100%.

**Table 25. Indicate If You Know At Least One Teacher Who Would Do The Following. (Item 41)**

	Reagan		All HS	
	2010	2011	2010	2011
Would be willing to give you extra help with your schoolwork if needed	84.1%	80.5%	85.9%	87.1%
Would be willing to help you with a personal problem	74.6%	67.5%	73.9%	76.2%
Cares about how you're doing in school	80.4%	76.0%	81.4%	83.8%
Would be willing to write you a recommendation for a job or college	73.2%	70.1%	81.9%	84.0%
Knows what you will be doing next year	59.4%	49.4%	66.1%	67.3%
Would be willing to help you even after you graduate	71.0%	62.3%	68.4%	67.7%

Note. Respondents could select more than one option, so percentages may not total 100%.

**Table 26. Were Your School Counselors and Project Advance Staff Available to Talk to You About College and Careers? (Item 42)**

	Reagan		All HS	
	Counselor	Project ADVANCE facilitator	Counselor	Project ADVANCE facilitator
Yes, they were available and I talked to them	56.9%	69.1%	58.2%	56.7%
Yes, but I didn't try to talk to them	21.5%	16.9%	23.5%	22.2%
No. I tried and wasn't able to meet with them.	13.9%	4.4%	9.1%	4.6%
No, but I never tried to meet with them	7.6%	9.6%	9.2%	16.5%

**Table 27. How Easy Has It Been for You and Your Parents to Understand the Process of Applying for Financial Aid? (Item 43)**

	Reagan			All HS
	2009	2010	2011	2011
Difficult	11.9%	16.4%	12.7%	11.8%
Some parts easy, some parts difficult	42.2%	34.3%	45.9%	46.6%
Easy	20.2%	21.4%	20.4%	24.9%
Did not apply for financial aid	25.7%	27.9%	21.0%	16.7%

**Table 28. How Do You Plan to Pay for Your Education After High School? (Item 44)**

	Reagan		All HS	
	2010	2011	2010	2011
Scholarships and/or grants	54.2%	60.4%	60.5%	65.0%
Loans	21.1%	29.5%	39.7%	41.4%
Family or personal savings	24.6%	24.2%	52.7%	55.2%
Working during the school year	45.8%	48.3%	47.8%	52.9%
Working during the summer	45.1%	47.0%	50.6%	56.3%
I don't know	24.6%	25.5%	14.8%	14.4%

*Note.* Results for this item may not match prior year reports. Prior to 2011, the results for this question were based on the total number of survey respondents. In 2011, the results are based on the number of respondents completing this particular question and are consistent with the way all questions on the survey are analyzed. Respondents could select more than one option, so percentages may not total 100%.

**Table 29. If You Did Not Submit a Financial Aid Application, Why Not? (Item 45)**

	Reagan		All HS	
	2010	2011	2010	2011
I do not need financial aid to attend college	4.8%	8.5%	20.9%	23.5%
My parents were not willing to submit private financial information	3.2%	8.5%	7.7%	8.1%
My family did not think we would qualify for or were eligible for financial aid	14.3%	18.6%	22.1%	21.8%
I do not plan to go to college	22.2%	18.6%	10.1%	12.9%
I did not know about the financial aid process	55.6%	45.8%	39.2%	33.7%

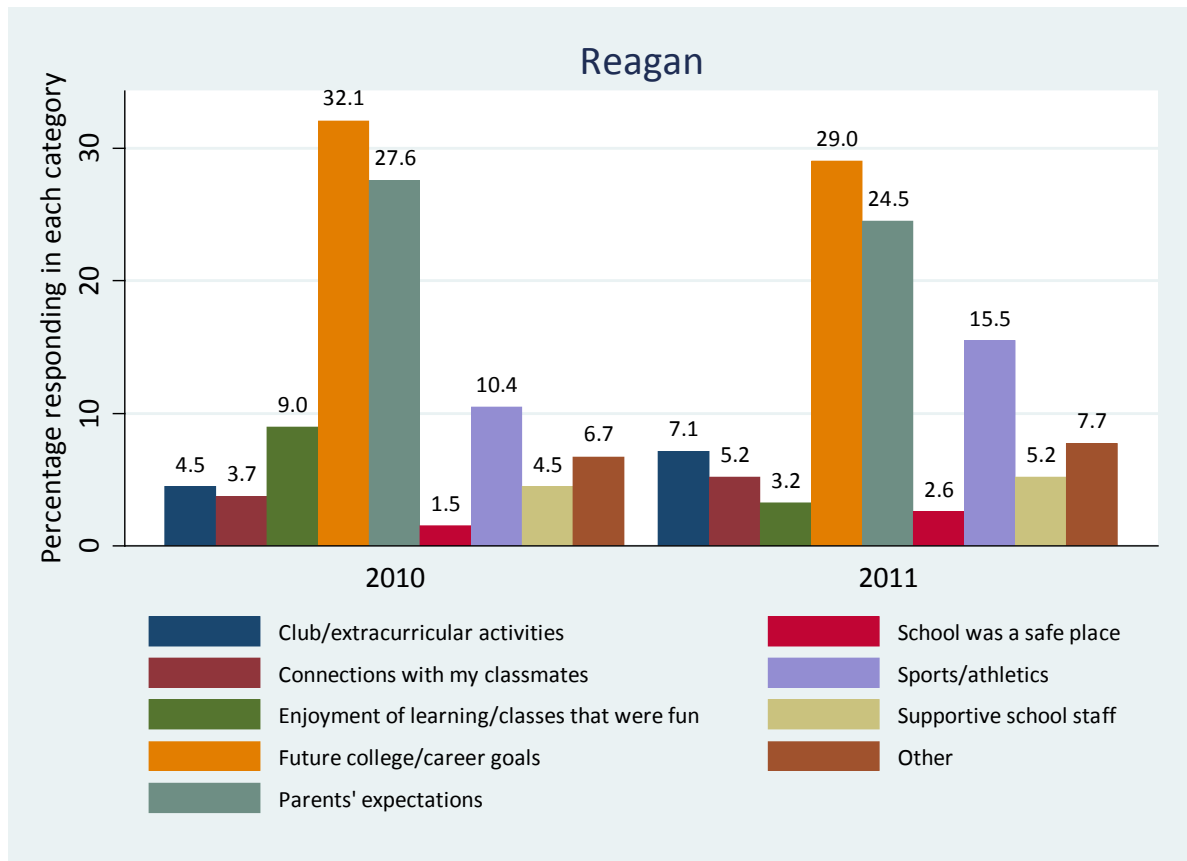
**Table 30. Without Including Any Financial Aid (Loans, Grants, or Scholarships), Do These Estimates Sound Right to You? (Item 46)**

	Reagan				All HS			
	No, they cost a lot less	Yes, that's about right	No, they cost a lot more	I have no idea	No, they cost a lot less	Yes, that's about right	No, they cost a lot more	I have no idea
<b>Full-time (12 hours) tuition and fees at ACC cost = about \$700 a semester</b>	6.7%	28.0%	9.3%	56.0%	6.7%	37.4%	7.4%	48.5%
<b>Full-time tuition and fees at UT Austin = about \$4,700 a semester</b>	5.6%	21.5%	10.3%	62.6%	3.3%	26.5%	26.6%	43.6%
<b>Full-time tuition and fees at Harvard University = about \$17,000 a semester</b>	6.3%	19.4%	14.6%	59.7%	3.8%	20.2%	25.2%	50.9%
<b>The total cost of books for full-time college = between \$1,000 and \$2,000 a school year</b>	8.4%	26.2%	4.7%	60.7%	6.2%	45.2%	7.7%	40.9%

Note. This was a new item in 2011.

**ADDITIONAL RESULTS**

**Figure 8a. What Is the *One* Thing That Was Most Important to Keeping You Going Through School All the Way to Graduation? (Item 47, Reagan)**



**Figure 8b. What Is the *One* Thing That Was Most Important to Keeping You Going Through School All the Way to Graduation? (Item 47, All High Schools)**

