



Survey Report

The sixth annual Austin Independent School District (AISD) High School Exit Survey was administered online to seniors in every AISD high school during Spring 2009. Facilitators on each campus, primarily *Project ADVANCE* counselors, were responsible for ensuring that all graduating seniors were given the opportunity to complete the survey.

This report contains the results for the LBJ High School Class of 2009. Where available, longitudinal data are presented to compare with the 2009 responses. In addition, average results from all AISD high schools are presented alongside results for LBJ for comparison purposes. In total, 3,365 students in the Class of 2009 completed the survey, including 145 students from LBJ. Longitudinal tests for statistical significance were conducted with district-level data (see district-level report). Table 1 presents longitudinal response rates by campus and by district. Next, major findings are presented, followed by open-ended campus-level responses and, finally, responses to the multiple choice items from the survey.

The report is structured as follows. First, a brief summary of key findings from the 2009 High School Exit Survey is provided. This summary is followed by a selection of open-ended student comments that capture the predominant themes that emerged from the student comments. Last, the detailed, item-specific results for each question from the survey are presented.

Table 1. High School Exit Survey Response Rates, Classes 2007-2009

	Class of 2007	Class of 2008	Class of 2009
All high schools	82.0%	74.8%	78.8%
LBJ	83.2%	71.1%	70.4%

Major Findings

Student responses are organized into seven general topics areas: Open-Ended Comments; Postsecondary Intentions and Family Support; High School Experiences, Campus Climate, and Civic Engagement; Instruction and Technology; Postsecondary Preparation and Advising; and Final Thoughts. Some of the notable trends at this campus include:

- **First person in family to attend college.** Compared to seniors district-wide, it appeared more LBJ seniors would be the first person in their family to attend college.
- **College preparation programs.** More LBJ seniors seemed to have participated in the *Project ADVANCE*, *AVID*, and *Talent Search/Trio* programs than did other seniors. These programs appeared to be rated positively by the LBJ seniors who reported participating in them. Compared to district seniors as a whole, greater percentages of LBJ seniors said the program facilitators encouraged them to attend school regularly, helped them choose the necessary courses to prepare for college, explained the financial aid process, and helped them apply to college.

INDIVIDUAL ITEM RESPONSES FOR LYNDON B. JOHNSON (LBJ) HIGH SCHOOL

OPEN ENDED COMMENTS

The responses below are to the question, “*What is the ONE thing that you especially want the administration of AISD to know?*”

Eighty students (55%) provided a response. Students mostly made general positive comments about the teachers and experiences they had at LBJ, although a few students expressed unhappiness with members of the LBJ staff. Many mentioned specific programs they found helpful, including AVID and Project ADVANCE. Some LBJ seniors had similar feelings as the LASA seniors in their dislike of the division between LASA and LBJ. Commonly identified themes expressed by the Class of 2009¹ include:

- **Positive comments.** Students were grateful to the teachers and staff at LBJ for being caring and helpful. “*I think that LBJ teachers have done a good job with the students*” “*thank you for everything you have done.*”
- **Negative comments.** Several students were also dissatisfied with teachers at LBJ. “*There should be a survey on teachers and how effective they are to students, because some teachers do not teach at all. It feels as if some teachers are only here for a paycheck since you only have to come to class to pass.*” “*I think there are some teachers at LBJ that need a little bit more training. I haven't learned alot in some of my class because the teacher simply can't deal with the kids. I feel in no way prepared to take college level science or social studies classes for that very reason.*” “*I tink you need to get more stricter teachers because they dont know how to handle these kids... More discipline actions.*”
- **College preparatory programs.** Several students made positive comments about their Project ADVANCE and AVID classes. “*My AVID class was very helpful to me and my class mates because of the class more than 50% have been accepted into a college or university. Wouldn't like for it to be removed and not available for the younger students. Especially my younger sibling who is currently enrolled in Garcia Middle school because of my influence on him. would want this program available to him. I thank AVID because I made it to graduation and college!!*” “*our project advance lady is awesome!*” “*My College Advisor, Yvonne Ovalle has been there for me always. Without her I would be lost in the college application process and not only that but she also helped me get some personal problems out of the way.*”
- **LASA and LBJ.** LBJ seniors felt the split between LASA and LBJ was inconvenient and created negative dynamics among students of the two schools. “*To intergrate LbJ and LASA again...its jus more fun that way and you have more friends and experiences*”

¹ All student quotes are taken directly from the survey, as typed in by the students. Examples are given to illustrate common themes.

POSTSECONDARY INTENTIONS AND FAMILY SUPPORT

Table 2. Within A Year After Graduating From High School, What Do You Plan To Do? (Item 6)

	LBJ 2007	LBJ 2008	LBJ 2009	All HS 2007	All HS 2008	All HS 2009
Continue my education*	90.8%	93.5%	91.7%	89.0%	92.2%	93.1%
Go into the military	5.0%	4.1%	6.2%	2.6%	2.8%	3.9%
Be a full-time parent	0.8%	4.9%	1.4%	2.2%	2.2%	1.7%
Work full-time	17.6%	11.4%	8.3%	13.2%	13.5%	11.7%
Work part-time	37.8%	48.8%	23.4%	35.5%	41.1%	32.9%
No plans	1.7%	3.3%	3.4%	5.6%	2.4%	2.3%

Note. Respondents could select more than one option, so percentages may not total 100%.

* Item was recoded to match longitudinal data. In 2008, this was two items: "Attend a school or college for a business, technical, trade, or vocational certificate" and "Attend a college or university for a degree." The percentage represents all students who chose either or both options.

Table 3. If You Are Not Planning To Pursue Further Education At This Time, What Are Your Primary Reasons? (Item 7)

	LBJ 2007	LBJ 2008	LBJ 2009	All HS 2007	All HS 2008	All HS 2009
Cannot afford to attend school	0.0%	37.5%	40.0%	30.6%	16.9%	33.0%
Childcare or family responsibilities	0.0%	25.0%	10.0%	9.8%	14.9%	11.4%
Don't like attending school	0.0%	50.0%	10.0%	22.4%	19.4%	17.6%
Grades/test scores aren't high enough	0.0%	12.5%	20.0%	23.0%	16.5%	21.6%
Don't feel academically prepared	100.0%	0.0%	0.0%	15.8%	13.7%	17.0%
Need income to support myself	100.0%	12.5%	0.0%	34.4%	21.8%	28.4%
Need income to support others	0.0%	0.0%	0.0%	10.4%	6.0%	10.8%
Other	25.0%	37.5%	14.3%	16.8%	22.6%	12.9%

Note. Respondents could select more than one option, so percentages may not total 100%.

Table 4. If You Are Not Planning To Pursue Further Education At This Time, Do You Intend To Pursue It At A Later Time? (Item 8)

	LBJ 2007	LBJ 2008	LBJ 2009	All HS 2007	All HS 2008	All HS 2009
Probably or definitely yes	58.3%	50.0%	41.7%	61.7%	59.2%	66.2%
Maybe	33.3%	25.0%	25.0%	20.6%	19.3%	24.1%
Probably or definitely no	0.0%	25.0%	8.3%	6.2%	10.5%	4.2%
Don't know	8.3%	0.0%	25.0%	11.5%	11.0%	5.6%

Note. Response options were collapsed for ease in reporting.

Table 5. To What Extent Were Your Parents Involved In The Following School-Related Things? (Item 9)

<i>*Percentage who responded parents were involved at least Occasionally</i>	LBJ 2007	LBJ 2008	LBJ 2009	All HS 2007	All HS 2008	All HS 2009
Volunteering at your school	37.2%	41.8%	21.4%	38.6%	40.0%	30.3%
Working with you on homework or school projects	48.8%	59.8%	43.8%	54.8%	54.6%	46.8%
Helping you decide what classes to take	55.4%	64.8%	42.0%	60.1%	60.2%	53.4%
Attending school meetings	59.2%	53.3%	34.0%	57.4%	54.9%	45.9%
Communicating with your teachers	55.4%	62.3%	54.5%	59.6%	60.6%	52.1%
Participating in school leadership opportunities	.	41.8%	19.4%	.	29.0%	17.9%
Attending athletic events	.	68.9%	47.9%	.	58.8%	51.5%
Attending academic events and competitions	.	44.2%	26.4%	.	36.9%	25.4%
Attending performance events	.	50.8%	37.2%	.	53.3%	45.0%
Joining and participating in the PTA	.	24.6%	10.4%	.	27.1%	16.5%

Note. Missing values, denoted by a period, indicate the item was not included on the respective year's survey.

* Response options were *Never*, *Rarely*, *Occasionally*, and *Often*. In 2008, *Consistently* was an additional response option; in 2009, it was removed. Thus, results may not be equivalent between years.

Table 6. How Far Did Your Parents Go In School? Indicate Your Mother And Father's Highest Level Of Education. (Item 12)

	LBJ Mother	LBJ Father	LBJ Sibling*	All HS Mother	All HS Father	All HS Siblings
Did not finish high school	26.4%	24.6%	11.1%	18.4%	18.7%	11.2%
Graduated from high school or earned a GED	20.4%	20.6%	33.3%	19.6%	18.0%	22.9%
Attended a 2-yr community/junior college or vocational/technical school, but no degree	9.6%	6.1%	13.1%	8.5%	6.0%	10.3%
Graduated from a 2-yr community/junior college or vocational/technical school	4.4%	3.7%	5.1%	5.2%	4.1%	3.6%
Attended a 4-yr college, but did not complete a degree	8.0%	8.8%	11.1%	14.0%	13.2%	8.0%
Graduated from college	10.3%	10.2%	2.0%	13.7%	12.5%	15.5%
Completed a Master's degree or equivalent	12.1%	9.4%	3.0%	11.1%	12.1%	3.5%
Completed a Ph.D., M.D., or other advanced professional degree	3.1%	5.9%	1.0%	3.6%	6.3%	1.4%
Don't Know or Does Not Apply	5.7%	10.7%	20.2%	5.9%	9.1%	23.6%

* New response option in 2009

HIGH SCHOOL EXPERIENCES, CAMPUS CLIMATE, AND CIVIC ENGAGEMENT

Table 7. How Many Different High Schools Have You Attended? (Item 3)

	LBJ 2007	LBJ 2008	LBJ 2009	All HS 2007	All HS 2008	All HS 2009
1	72.9%	64.2%	55.8%	76.1%	77.6%	70.1%
2	16.8%	24.4%	23.0%	16.8%	16.8%	18.4%
3 or more	10.3%	11.4%	21.2%	7.2%	5.6%	11.5%

Table 8. Please Indicate The Number Of Years Of High School In Which You Participated In Each Of These Extracurricular Activities. (Items 13 & 15)

<i>*Percentage who reported at least 1 year of participation</i>	LBJ 2008	LBJ 2009	All HS 2008	All HS 2009
<i>In school</i>				
Music	20.8%	21.8%	35.1%	33.6%
Theater	26.1%	21.9%	20.4%	18.6%
Dance	29.7%	26.8%	23.2%	22.1%
Sports	75.2%	68.8%	58.8%	57.9%
UIL academic competitions	16.2%	8.7%	18.8%	20.0%
Speech/debate	30.8%	26.8%	21.2%	20.9%
Student government	24.8%	17.0%	16.4%	16.3%
Career and technical student organizations	.	13.1%	.	14.5%
<i>Outside school</i>				
Music	20.3%	19.3%	30.3%	30.5%
Theater	13.8%	9.9%	11.7%	7.9%
Dance	19.8%	18.5%	17.0%	15.0%
Sports	60.7%	55.8%	52.0%	50.9%
Community service/volunteering	52.1%	55.5%	57.1%	62.1%
Environmental project/activities	22.9%	18.9%	25.4%	28.0%
Boy/Girl Scouts	4.2%	5.4%	8.9%	8.0%
Family care	23.3%	33.1%	19.8%	22.4%

Note. Missing values, denoted by a period, indicate the item was not included on the respective year's survey.

*Respondents could select more than one option, so percentages may not total 100%.

Table 9. For Each Of These Extracurricular Activities, Did You Spend More Than 10 Hours Per Week During Your Senior Year On Them? (Items 14 & 16)

<i>*Percentage of seniors indicating they spent more than 10 hours per week on each activity.</i>	LBJ 2009	All HS 2009
<i>Inside school</i>		
Music	2.2%	8.0%
Theater	2.3%	3.2%
Dance	3.8%	3.8%
Sports	27.9%	23.4%
UIL academic competitions	1.5%	2.3%
Speech/debate	1.6%	1.3%
Student government	1.6%	0.9%
Career and technical student organizations	0.8%	2.3%
<i>Outside school</i>		
Music	5.9%	6.6%
Theater	0.0%	1.5%
Dance	3.7%	2.9%
Sports	22.3%	19.1%
Community service/volunteering	11.2%	6.3%
Environmental project/activities	2.3%	1.8%
Boy/Girl Scouts	0.0%	0.6%
Family care	8.1%	7.2%

* Respondents could select more than one option, so percentages may not total 100%.

Table 10. Please Indicate The Number Of Years Of High School That You Have Been Employed (Either During The Year Or During The Summer). (Item 17)

	LBJ 2008	LBJ 2009	All HS 2008	All HS 2009
0	21.3%	19.4%	24.4%	27.9%
1	35.2%	28.5%	28.2%	26.8%
2	23.0%	25.0%	26.2%	24.5%
3	12.3%	18.1%	13.7%	12.9%
4	8.2%	9.0%	7.5%	7.9%

Figure 1. Now Indicate The Number Of Hours Per Week That You Have Worked During Last Summer. (Q18a)

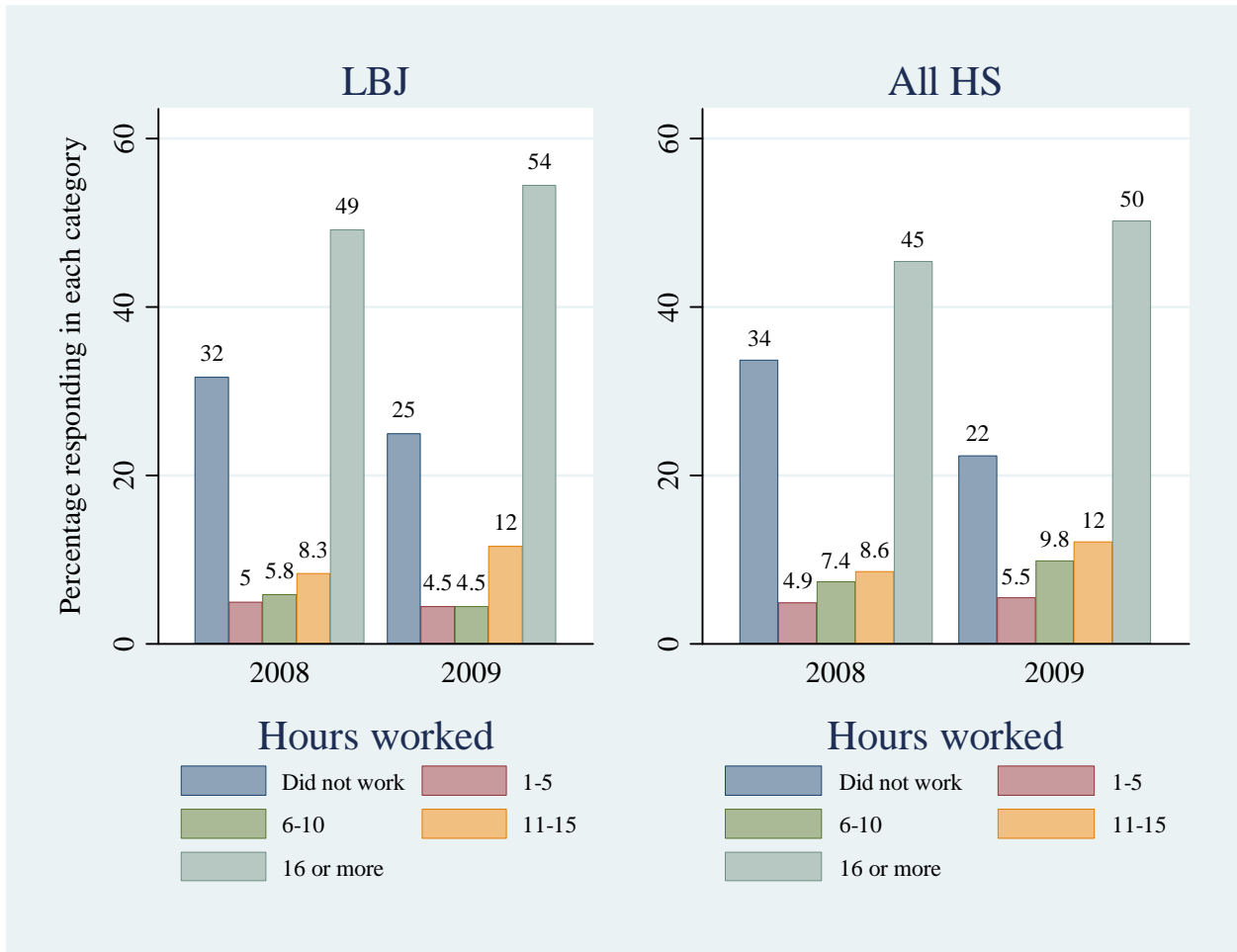


Figure 2. Now Indicate The Number Of Hours Per Week That You Have Worked During Your Senior Year. (Q18b)

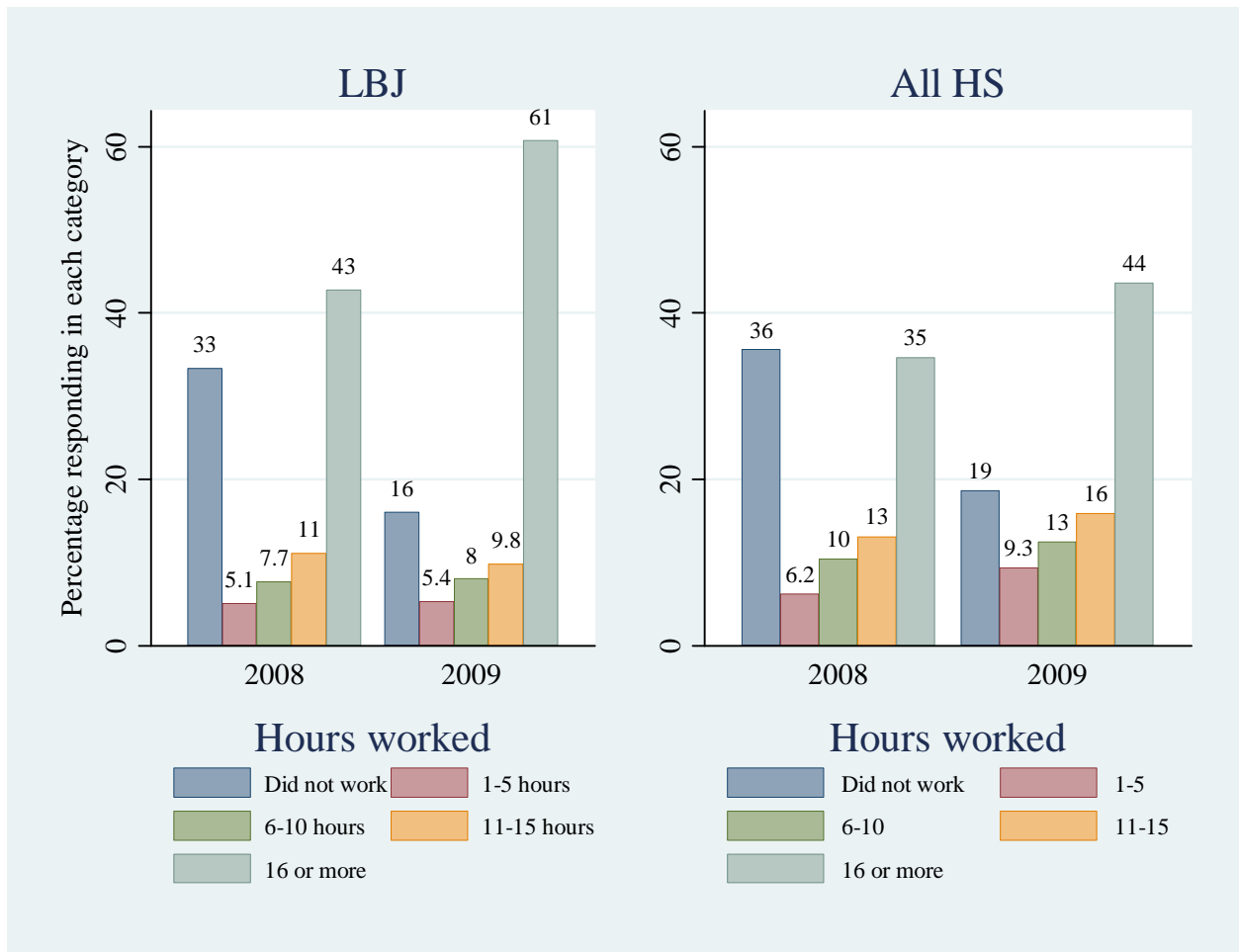


Figure 3. Thinking Back On Your Years In High School, How Many Hours Per Week Did You Typically Spend Studying, Doing Research, Or Completing Homework Assignments Outside Of Class? (Item 19)

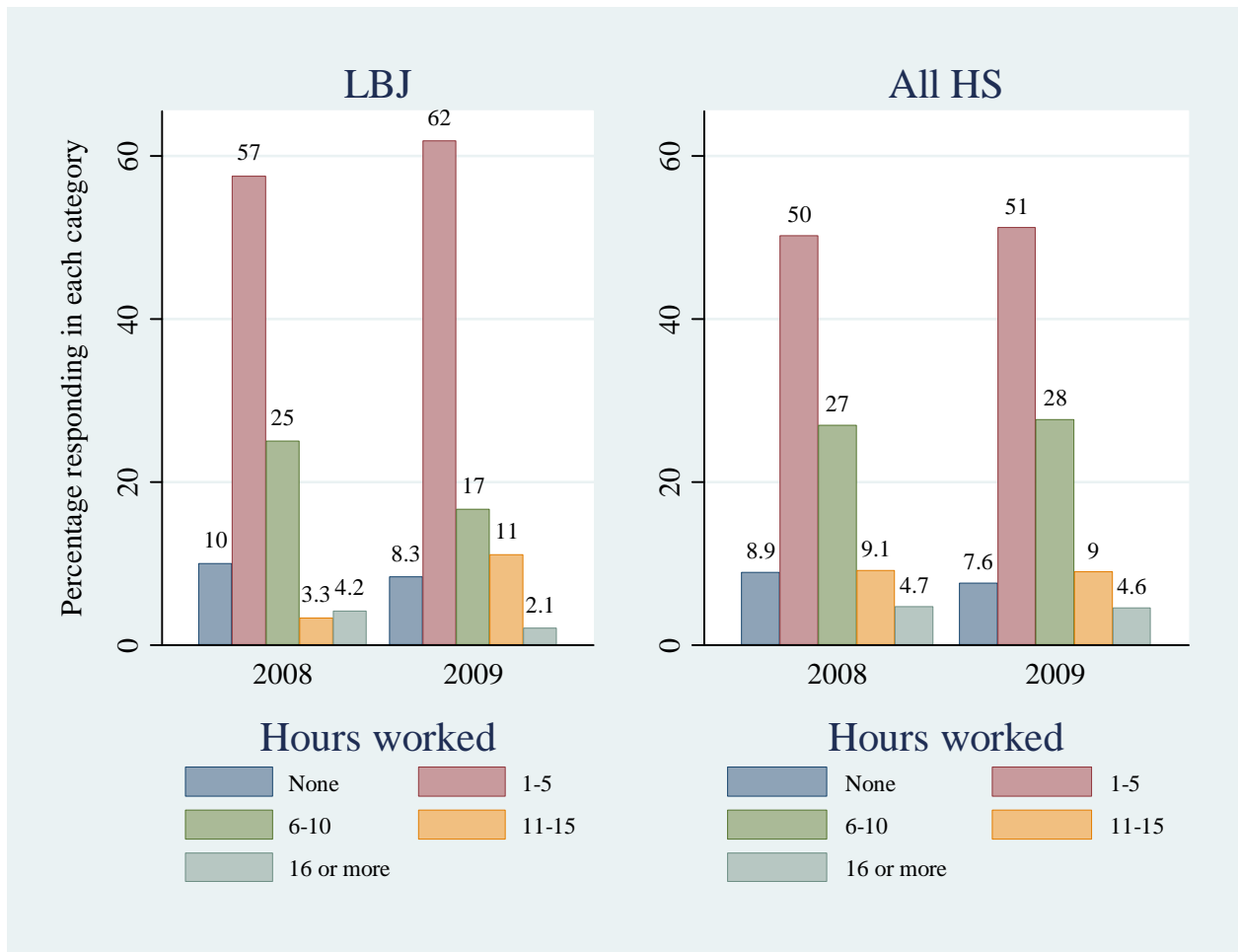


Figure 4. On Average, What Percentage Of Your Study, Research And Homework Was Done Without Distractions (E.G., Television, Music, IM, Texting, Phone Calls)? (Item 20)

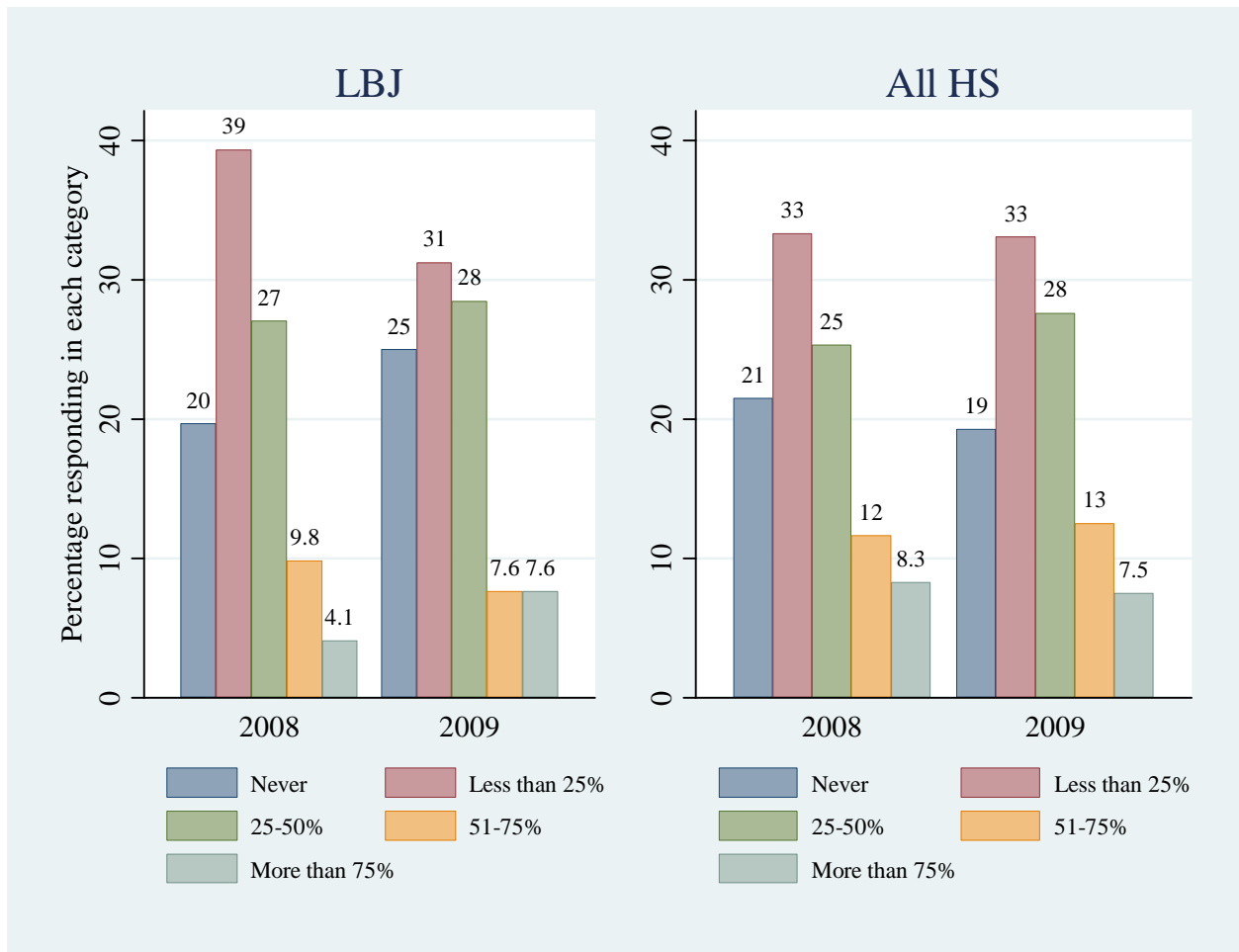


Table 11. Please Mark The Item That Best Indicates How You Feel: (Items 21a-21k)

<i>*Percentage who responded Strongly agree or Agree</i>	LBJ 2009	All HS 2009
I feel safe at my school	61.2%	78.7%
My classmates show respect to each other	30.2%	50.9%
The consequences for breaking school rules are the same for everyone	39.0%	41.1%
Adults at this school listen to student ideas and opinions	38.7%	53.1%
My homework helps me learn things I need to know	57.6%	58.6%
I know how I am doing in school	78.2%	82.9%
My teachers expected me to do my best work	80.1%	83.0%
My classes were rigorous and challenging	52.8%	59.6%
My high school coursework has been relevant to my life	45.7%	47.4%
There is at least one adult at my school who I can go to if I have a problem	85.2%	78.0%
My teachers are fair to everyone	30.0%	45.3%

*Response options include *Strongly agree, Agree, Neither agree nor Disagree, Disagree, Strongly disagree, and Don't know*. Response options changed from 2008. Therefore, longitudinal data were not available.

Table 12. Please Answer The Following Questions About Your Civic Engagement. (Items 4 & 5)

	LBJ 2009	All HS 2009
Are you registered to vote?*	39.9%	41.4%
Have you voted in any school board, city, county, state, or national election?*	18.0%	22.9%
Will you register to vote after your 18th birthday?***	82.2%	77.3%

* Only asked to students who were 18 years old or older

** Only asked to students who were not 18 years or older at the time they completed the survey

INSTRUCTION AND TECHNOLOGY

Table 13. How Well Did Your High School Help You To Actively Develop Knowledge And Skills In The Following Areas? (Item 22)

<i>*Percentage who responded Somewhat well or Well</i>	LBJ 2007	LBJ 2008	LBJ 2009	All HS 2007	All HS 2008	All HS 2009
Teamwork	.	85.1%	85.4%	.	88.6%	89.7%
Creative thinking	93.4%	91.7%	95.8%	90.8%	90.6%	91.7%
Problem solving	97.5%	91.0%	93.0%	92.9%	91.5%	92.0%
Conflict resolution	82.6%	82.6%	87.5%	84.6%	82.8%	84.1%
Personal health/fitness	72.1%	81.1%	83.9%	78.5%	78.6%	81.0%
Time management	.	76.1%	81.8%	.	80.8%	81.2%
Technology	.	82.6%	79.2%	.	84.6%	84.2%

Note. Missing values, denoted by a period, indicate the item was not included on the respective year's survey.

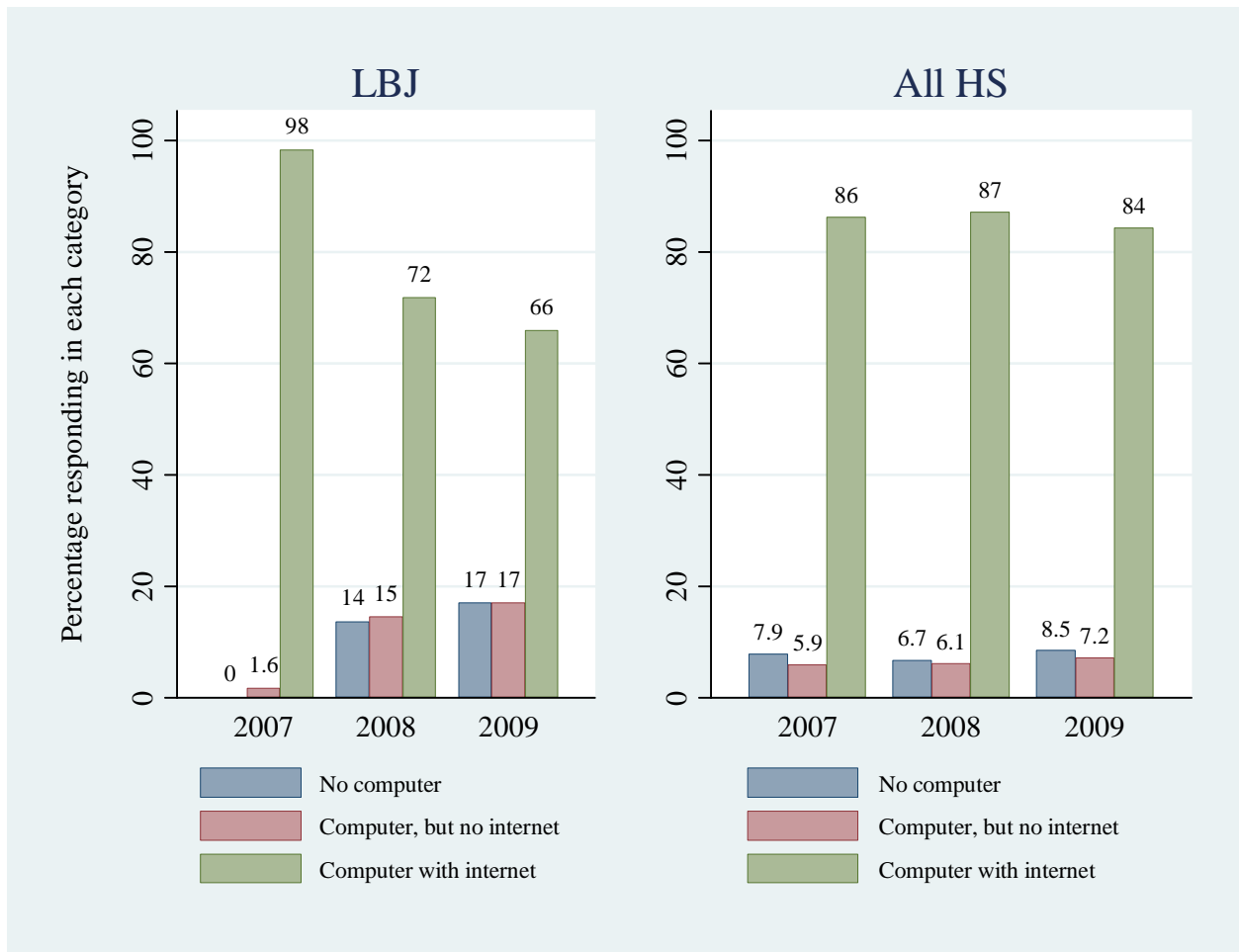
*Responses were *Not well*, *Somewhat well*, and *Very well*.

Table 14. Please Rate The Quality Of Instruction That You Feel That You Received In The Following Areas: (Item 23)

<i>*Percentage who responded Good or Excellent</i>	LBJ 2007	LBJ 2008	LBJ 2009	All HS 2007	All HS 2008	All HS 2009
Writing	88.5%	74.6%	73.6%	82.6%	81.2%	81.6%
Mathematics	86.9%	63.1%	76.4%	71.3%	70.7%	70.8%
Science	87.6%	56.7%	72.2%	68.9%	69.5%	69.8%
Social Studies	91.7%	72.7%	76.1%	84.2%	82.8%	82.0%
Computer/Technology	65.0%	73.8%	71.7%	71.0%	71.8%	70.2%
Foreign Language	67.2%	53.7%	56.3%	64.5%	63.9%	64.3%
Performing/Fine Arts	76.9%	58.2%	67.8%	72.2%	73.8%	73.0%

* Responses were *Poor*, *Fair*, *Good*, and *Excellent*.

Figure 5. Which Of The Following Describes Your Computer And Internet Access At Home? (Item 24)



Note. This item was recoded to match longitudinal data. In prior years' surveys, students were asked to indicate the type of Internet service they had at home.

**Figure 6. Do Your Parents Use Parentconnect/Gradesped To Monitor Your Grades?
(Item 27)**



Note. This item was new for 2009.

Table 15. How Frequently Do You Use A Computer?: (Item 25)

<i>*Percentage who responded At least once a week or more</i>	LBJ 2007	LBJ 2008	LBJ 2009	All HS 2007	All HS 2008	All HS 2009
At home?	82.4%	73.0%	70.3%	86.4%	86.7%	83.9%
At school?	85.5%	77.9%	79.3%	70.8%	74.0%	73.1%
To present material in class, for example, using PowerPoint	39.5%	31.1%	27.5%	22.6%	23.5%	22.0%
To type a paper or class assignment?	58.8%	42.9%	42.8%	57.2%	55.3%	53.5%
To search the Internet to complete class-related assignments?	69.7%	52.1%	50.0%	62.3%	61.6%	62.7%
To research college/career choices?	71.4%	59.2%	66.2%	50.5%	50.6%	51.0%
To complete online forms or applications for college/employment?	73.0%	58.2%	59.0%	43.4%	44.0%	43.4%
To communicate with teachers (e.g., email, IM, etc.)?	33.9%	32.2%	20.8%	18.1%	20.8%	17.8%
To communicate with friends (e.g., email, IM, blog, Facebook, etc.)?	70.6%	63.3%	62.1%	74.1%	74.8%	72.5%
To monitor grades/progress in school?	.	.	26.4%	.	.	29.4%

Note. Missing values, denoted by a period, indicate the item was not included on the respective year's survey.

*Responses were *Never*, *Less than once a week*, *Once or twice a week*, *Every day*, and *Almost every day*. Reports prior to 2008 indicated item means; in 2009, percentages represented the number of students reporting *At least once a week* or more.

Table 16. Indicate How Much You Agree With Each Of The Following Statements About Technology Use At School: (Item 26)

<i>*Percentage who responded Agree or Strongly agree</i>	LBJ 2008	LBJ 2009	All HS 2008	All HS 2009
My teachers effectively use the technology resources that are available.	83.2%	86.7%	85.7%	89.8%
I would like to use more electronic communication with my classmates as part of my schoolwork.	82.7%	83.3%	79.8%	82.3%
I would like to use more electronic communication with my teachers.	81.4%	77.8%	73.2%	76.0%
I would like to use more online resources.	84.0%	83.9%	82.1%	84.0%

* Responses were *Strongly disagree, Disagree, Agree, Strongly disagree, and Don't know/Unsure.*

POSTSECONDARY PREPARATION AND ADVISING

Table 17. At What Time In Your Life Did You Start Thinking About College As A Possibility After High School? (Item 29)

	LBJ 2007	LBJ 2008	LBJ 2009	All HS 2007	All HS 2008	All HS 2009
As long ago as I can remember*	29.9%	29.5%	28.0%	39.1%	40.5%	38.7%
In elementary school	12.8%	9.8%	7.0%	12.0%	8.5%	7.6%
In middle/junior high school	24.8%	21.3%	28.7%	21.0%	21.9%	21.0%
In high school	30.8%	36.1%	32.9%	25.3%	26.9%	30.9%
I've never thought about college as an option after high school	1.7%	3.3%	3.5%	2.5%	2.3%	1.8%

* Item changed from 2007 surveys, when it was "When I was a child."

Table 18. High School Preparation For Post-Graduation Opportunities (Item 30a-D)

<i>*Percentage who responded Somewhat well or Well</i>	LBJ 2007	LBJ 2008	LBJ 2009	All HS 2007	All HS 2008	All HS 2009
How well prepared were you to plan your high school course selections?	94.9%	95.1%	92.3%	88.7%	91.2%	91.2%
How well prepared were you to meet your college and career goals?	92.3%	91.0%	88.1%	86.9%	88.4%	86.1%
How well prepared have you been for the college/technical/vocational school application process?	91.5%	86.7%	83.1%	84.6%	83.4%	82.0%
How well informed are/were you about obtaining financial aid for education after high school (whether or not you applied)?	93.2%	86.8%	87.3%	84.2%	81.6%	81.0%

* Response options were *Not well*, *Somewhat well*, and *Very well*.

Table 19. How Did You Prepare For Continuing Education? (Check All That Apply) (Item 32)

	LBJ 2007	LBJ 2008	LBJ 2009	All HS 2007	All HS 2008	All HS 2009
Took the PSAT examination	54.6%	63.4%	51.0%	57.9%	67.9%	63.1%
Took AP/IB classes	43.7%	57.7%	41.4%	45.3%	48.6%	47.2%
Visited campuses	47.1%	43.9%	56.6%	44.0%	51.8%	55.8%
Attended college fairs	67.2%	57.7%	52.4%	44.4%	48.6%	45.3%
Completed and submitted a FASA	57.1%	51.2%	55.2%	41.3%	49.3%	48.6%
Completed and submitted a scholarship application	36.1%	36.6%	44.1%	30.8%	41.6%	40.3%
Took college entrance tests	62.2%	63.4%	64.1%	65.6%	72.4%	68.1%
Took test prep classes	41.2%	43.1%	40.7%	38.2%	41.7%	38.9%
Completed ACC courses	19.3%	22.0%	26.2%	23.3%	29.4%	33.1%
Ordered and submitted transcripts	38.7%	34.1%	45.5%	40.3%	50.3%	47.7%
Other college-level courses	.	.	6.2%	.	.	5.4%

Note. Respondents could select more than one option, so percentages may not total 100%. Missing values, denoted by a period, indicate the item was not included on the respective year's survey.

Table 20. In Which Of The Following College Preparation Programs Did You Participate While In High School? (Item 33)

	LBJ 2008	LBJ 2009	All HS 2008	All HS 2009
Project ADVANCE	35.0%	31.7%	26.1%	17.9%
AVID	22.0%	25.5%	8.9%	8.8%
ACC College Connections	17.1%	9.7%	17.1%	18.0%
College Forward	4.9%	4.1%	3.0%	3.5%
Con mi MADRE	4.1%	6.9%	3.0%	1.9%
Talent Search/Trio	9.8%	8.3%	2.6%	2.6%
Upward Bound	4.9%	4.1%	1.8%	1.3%
Breakthrough	7.3%	0.7%	1.5%	1.3%
Immigrant College Access	.	0.0%	.	2.3%
I did not participate in any programs like this	26.8%	25.5%	41.6%	41.3%
Other	9.8%	6.9%	4.9%	3.0%

Note. Missing values, denoted by a period, indicate the item was not included on the respective year's survey.

Table 21. If You Participated In One Or More College Preparation Programs, What Did You Get Out Of It? (Item 34)

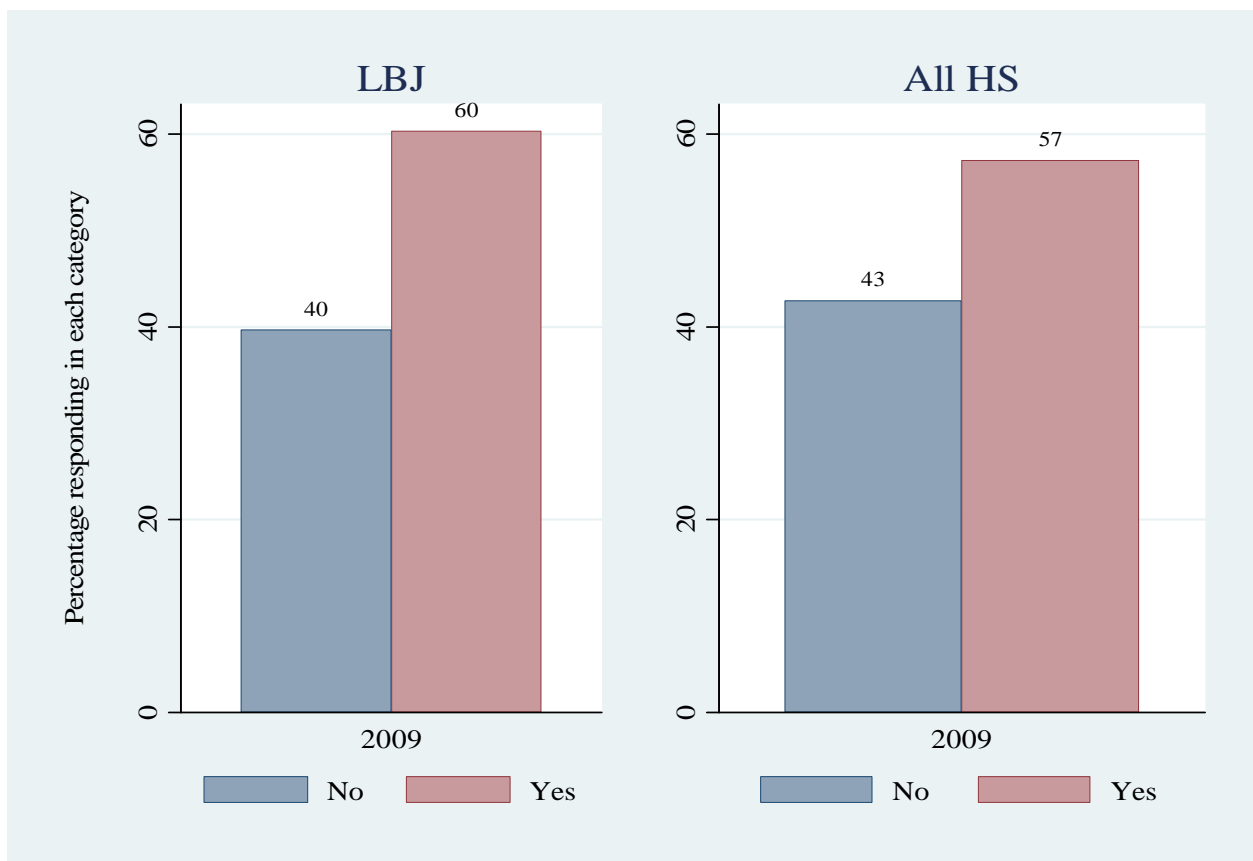
	LBJ 2008	LBJ 2009	All HS 2008	All HS 2009
They encouraged me to attend school regularly	55.6%	46.3%	35.3%	31.8%
They helped me choose the HS courses to prepare for college	47.8%	35.2%	31.8%	28.5%
They explained the financial aid process to me	51.1%	47.2%	37.9%	33.2%
They were available to help with school-related issues	45.6%	36.1%	29.1%	26.2%
They helped me deal with personal issues	36.7%	25.9%	18.7%	15.4%
They helped me believe that college was right for me	57.8%	39.8%	33.4%	30.9%
They helped me apply to college	61.1%	52.8%	47.3%	38.7%
Other	4.4%	1.9%	8.6%	1.9%

**Table 22. Have You Applied To The Following Types Of Postsecondary Institutions?
(Items 35, 36, And 37)**

	LBJ 2007	LBJ 2008	LBJ 2009	All HS 2007	All HS 2008	All HS 2009
Have you applied to a 2-year college	55.5%	53.7%	57.2%	49.8%	41.4%	41.3%
Have you applied to a 4-year college?	82.4%	65.9%	76.6%	69.1%	63.9%	62.7%
Have you applied to a business/technical/vocational school?	16.0%	13.8%	12.6%	13.7%	6.5%	8.5%

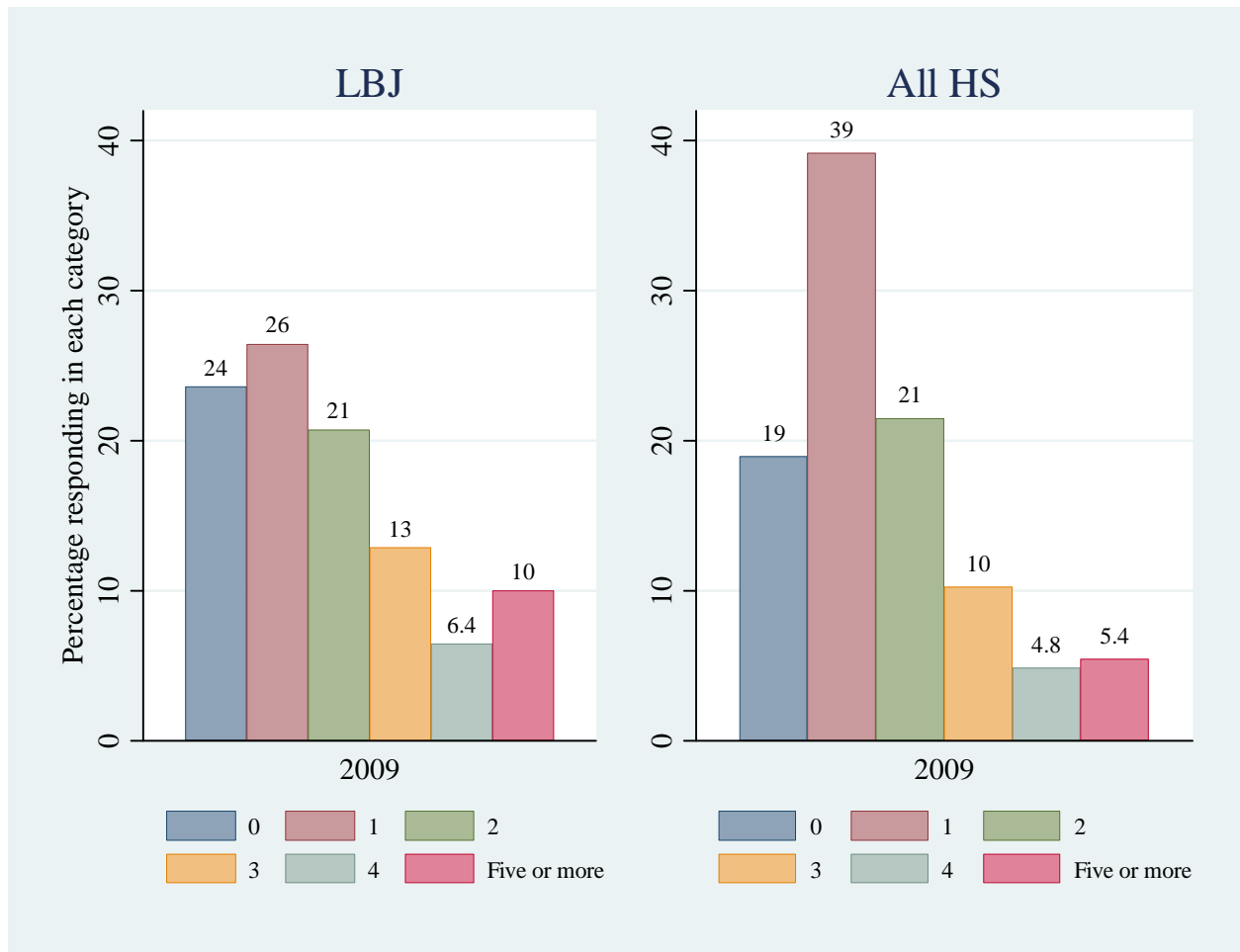
Note. On the 2009 survey, students were asked to indicate the number of schools to which they had applied, whereas in 2008, students were only prompted to indicate whether they had applied.

**Figure 7. Will You Be The First Of Your Siblings (Brothers Or Sisters) To Attend College?
(Item 10)**



Note. This item was reworded for the 2009 survey. In past years, we asked students if they were the first person in their family to attend college. For 2009, we asked students separately about their siblings and parents. Therefore, no longitudinal data were available for this question.

Figure 8. How Many Siblings (Brothers Or Sisters) Do You Have Who Are Either Enrolled In College Or Live With You (Item 11)



Note. This item was new to the 2009 survey. This item is designed to gauge the number of dependent children either living at home or away at college.

Table 23. How Easy Has It Been For You And Your Parents To Understand The Process Of Applying For Financial Aid? (Item 45)

	LBJ 2008	LBJ 2009	All HS 2008	All HS 2009
Difficult	9.1%	15.2%	11.8%	12.8%
Some parts easy, some parts difficult	44.6%	50.3%	36.3%	43.7%
Easy	36.4%	24.8%	38.0%	22.2%
Did not apply for financial aid	9.9%	9.7%	13.8%	21.4%

Table 24. How Do You Plan To Pay For Your Education After High School? (Item 46)

	LBJ 2008	LBJ 2009	All HS 2008	All HS 2009
Scholarships and/or grants	62.6%	68.3%	54.8%	56.3%
Loans	78.9%	36.6%	63.7%	38.0%
Family or personal savings	46.3%	28.3%	56.8%	49.5%
Working during the school year	49.6%	43.4%	47.0%	46.4%
Working during the summer	49.6%	39.3%	45.3%	48.2%
I don't know	17.9%	21.4%	14.9%	14.6%

Note. Respondents could select more than one option, so percentages may not total 100%.

Table 25. Which Of The Following Did A Family Member Do To Help You Prepare For Life After High School Graduation? (Item 43)

	LBJ 2009	All HS 2009
Encouraged you to apply to several different colleges	58.6%	57.0%
Talked to you about what college would be like	54.5%	62.9%
Helped you complete college applications	29.7%	42.0%
Helped you find scholarships	29.0%	34.2%
Helped you complete a FAFSA	51.7%	45.6%
Helped you decide which college to attend	51.7%	53.0%
Helped you write college essays/personal statements	21.4%	29.6%
Did not help	13.1%	14.2%

Note. This item was new in 2009.

Table 26. If You Did Not Submit A Financial Aid Application, Why Not? (Item 47)

	LBJ 2009	All HS 2009
I do not need financial aid to attend college	15.4%	23.4%
My parents were not willing to submit private financial information	6.2%	6.9%
My family did not think we would qualify for or were eligible for financial aid	18.5%	23.5%
I do not plan to go to college	21.5%	9.8%
I did not know about the financial aid process	38.5%	36.3%

Note. This item was new in 2009.

Table 27. Which Of The Following Campus Staff Helped You With Any Of The Activities Listed Below: (Item 42)

	LBJ School counselor	LBJ Advisory	LBJ Teacher	LBJ Advance Facilitator	LBJ AVID Staff	LBJ Early College Start Advisor	All HS School counselor	All HS Advisory	All HS Teacher	All HS Advance Facilitator	All HS AVID Staff	All HS Early College Start Advisor
Selected courses for work or college	46.2%	20.0%	21.4%	36.6%	13.1%	5.5%	48.3%	12.8%	28.0%	21.7%	4.2%	12.0%
AP/honors courses	44.1%	16.6%	41.4%	20.0%	11.0%	2.1%	35.4%	11.1%	47.4%	10.5%	3.8%	3.2%
To continue education	46.9%	29.7%	42.8%	47.6%	17.9%	9.7%	47.5%	22.6%	53.9%	26.1%	6.0%	9.8%
Talked about colleges/schools	39.3%	22.8%	30.3%	50.3%	14.5%	6.2%	37.7%	16.3%	37.1%	26.4%	4.7%	7.5%
Discussed careers	37.2%	20.7%	26.9%	44.1%	13.1%	4.1%	33.5%	16.8%	33.9%	24.1%	4.8%	7.6%
Encouraged to apply to multiple schools	36.6%	20.7%	23.4%	49.0%	15.2%	4.1%	37.6%	16.3%	34.4%	26.8%	4.9%	5.2%
Helped complete applications for college	27.6%	15.9%	15.2%	48.3%	13.1%	4.8%	25.2%	10.3%	20.3%	26.0%	3.8%	5.7%
Helped find scholarships	27.6%	13.1%	17.2%	43.4%	12.4%	4.8%	24.3%	9.8%	19.4%	26.2%	4.0%	4.1%
Helped choose college	25.5%	13.8%	20.0%	44.1%	11.0%	5.5%	22.8%	9.6%	22.9%	19.4%	3.0%	4.3%
Helped plan for college expenses	22.8%	11.7%	17.2%	44.8%	13.1%	4.8%	21.2%	10.3%	16.9%	21.7%	3.7%	4.5%
Helped with college application essays or personal statements	25.5%	11.7%	22.1%	35.2%	11.7%	4.1%	21.3%	9.3%	36.2%	19.9%	3.8%	3.9%

Note. The design of this question changed from what it was in 2008. In past years, students were asked to rate each type of staff member according to their effectiveness in one of the above college preparation domains. On the 2009 survey, students were asked to indicate whether any of these staff members had helped them with any of the activities listed above.

ADDITIONAL RESULTS

Figure 9a. What Is The *One Thing* That Was Most Important To Keeping You Going Through School All The Way To Graduation? (Item 48, LBJ)

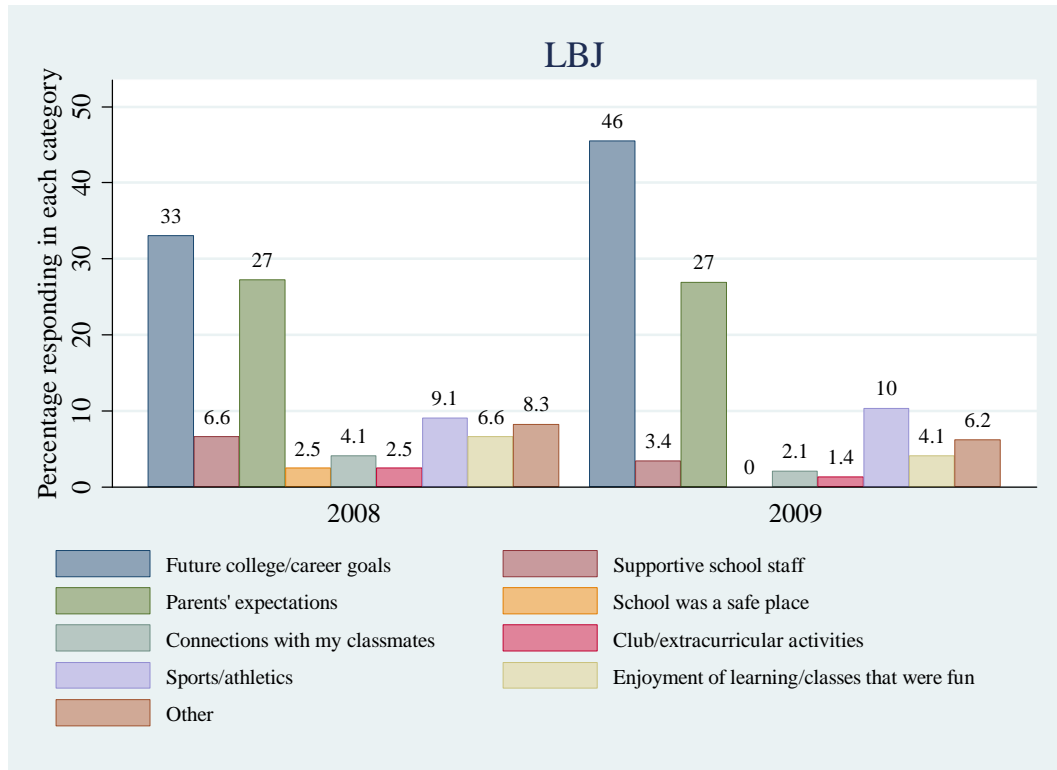


Figure 9b. What Is The *One Thing* That Was Most Important To Keeping You Going Through School All The Way To Graduation? (Item 48, All High Schools)

