



HIGH SCHOOL EXIT SURVEY REPORT FOR CLASS OF 2011, GARZA HIGH SCHOOL

The ninth annual Austin Independent School District (AISD) High School Exit Survey was administered online to seniors in every AISD high school during Spring 2011. On each campus, *Project ADVANCE* facilitators primarily were responsible for ensuring all seniors were given the opportunity to complete the survey. Campus-level special education staff identified those seniors cognitively unable to complete the survey. These were the only students deemed ineligible to take the survey. Special education chairs at each campus were tasked with providing eligible special education students with guidance and assistance in completing the survey. Funding for this report was provided by district local funds.

This report contains the results for the Garza High School Class of 2011. Where available, data are presented from previous senior classes to compare with 2011 responses. In addition, district results are presented alongside campus results for comparison purposes. In total, 3,793 students in the Class of 2011 completed the survey, including 92 students from Garza. Tests for statistical significance are not included in this report; such analyses will be included in the district report.

Table 1 presents adjusted yearly response rates by campus and by district. The response rates were adjusted such that students not eligible to complete the survey, and those who withdrew from a campus before survey administration, were removed from the total. Next, responses to the multiple choice items from the survey are presented. In some cases, two or more tables appear for a single survey item. In response to feedback from campus administrators and staff during data seminars conducted by the Department of Program Evaluation this school year, more detail is provided for 2011 responses.

Table 1. High School Exit Survey Adjusted Response Rates, Classes 2009–2011

	Class of 2009	Class of 2010	Class of 2011
All high schools	83.4%	87.9%	87.3%
Garza	55.1%	59.9%	55.1%

INDIVIDUAL ITEM RESPONSES FOR GARZA HIGH SCHOOL

Seniors' responses to the multiple choice questions were organized into seven general topic areas: postsecondary intentions and family support; high school experiences and campus climate; instruction and technology; postsecondary preparation and advising; and additional results.

POSTSECONDARY INTENTIONS AND FAMILY SUPPORT

**Table 2. Within a Year After Graduating From High School, What Do You Plan to Do?
 (Item 8)**

	Garza		All HS	
	2010	2011	2010	2011
Continue my education	87.8%	88.0%	91.8%	91.1%
Attend a 4-year college	22.0%	40.2%	59.1%	56.8%
Attend a 2-year college	36.6%	22.8%	17.8%	17.6%
Attend a school for a technical certificate	12.2%	9.8%	5.9%	5.0%
Attend a 2-year and eventually transfer to a 4-year college	34.1%	30.4%	19.0%	20.8%
Go into the military	7.3%	4.3%	4.3%	4.3%
Be a full-time parent	4.9%	3.3%	1.2%	1.6%
Work full-time	26.8%	23.9%	11.5%	9.5%
Work part-time	29.3%	34.8%	35.0%	32.3%
Other	.	10.9%	.	6.7%
No plans/Not sure	6.1%	0.0%	5.1%	3.7%

Notes. Results for this item may not match prior year reports. Prior to 2011, the results for this question were based on the total number of survey respondents. In 2011, the results are based on the number of respondents completing this particular question and are consistent with the way all questions on the survey are analyzed. Respondents could select more than one option, so percentages may not total 100%. Missing values, denoted by a period, indicate the item was not included on the respective year's survey.

Table 3. If You Are Not Planning to Pursue Further Education at This Time, What Are Your Primary Reasons? (Item 9)

	Garza			All HS
	2009	2010	2011	2011
Cannot afford to attend school	44.4%	20.0%	22.2%	21.7%
Childcare or family responsibilities	0.0%	20.0%	0.0%	11.4%
Don't like attending school	22.2%	30.0%	0.0%	18.0%
Grades/test scores aren't high enough	33.3%	10.0%	11.1%	14.3%
Don't feel academically prepared	11.1%	0.0%	11.1%	15.4%
Need income to support myself/others	33.3%	40.0%	33.3%	21.7%
My goals don't require additional education	.	30.0%	33.3%	18.8%
Other	33.3%	40.0%	22.2%	25.4%

Note. Respondents could select more than one option, so percentages may not total 100%. Missing values, denoted by a period, indicate the item was not included on the respective year's survey.

Table 4a. To What Extent Were Your Parents Involved in the Following School-related Activities? (Item 10)

<i>Percentage who responded parents were involved at least Occasionally*</i>	Garza			All HS
	2009	2010	2011	2011
Volunteering at your school	25.3%	17.1%	23.6%	29.0%
Working with you on homework or school projects	47.7%	36.6%	39.6%	42.9%
Helping you decide what classes to take	42.4%	35.8%	37.4%	48.4%
Attending school meetings	43.7%	34.1%	42.4%	43.9%
Communicating with your teachers	63.2%	56.8%	64.8%	44.9%
Participating in school leadership opportunities	19.5%	9.8%	14.3%	17.7%
Attending athletic events	27.6%	29.6%	34.1%	48.2%
Attending academic events and competitions	29.9%	22.0%	26.7%	21.8%
Attending performance events	41.4%	34.1%	41.8%	43.4%
Joining and participating in the PTA	14.9%	11.4%	16.5%	17.0%

* Response options were *Never, Rarely, Occasionally, and Often.*

Table 4b. During High School, To What Extent Were Your Parents Involved in the Following School-Related Activities? (Item 10)

	Garza				All HS			
	Never	Rarely	Occasionally	Often	Never	Rarely	Occasionally	Often
Volunteering at your school	56.2%	20.2%	20.2%	3.4%	47.8%	23.2%	19.5%	9.5%
Working with you on homework	33.0%	27.5%	27.5%	12.1%	26.4%	30.7%	30.8%	12.1%
Helping you decide which classes to take	34.1%	28.6%	23.1%	14.3%	26.5%	25.1%	30.3%	18.1%
Attending school meetings	22.8%	34.8%	28.3%	14.1%	32.4%	23.7%	25.4%	18.5%
Communicating with your teachers	15.4%	19.8%	37.4%	27.5%	22.6%	32.5%	28.7%	16.2%
Participating in school leadership opportunities	61.5%	24.2%	12.1%	2.2%	60.3%	22.0%	11.9%	5.8%
Attending athletic events and competitions	52.7%	13.2%	18.7%	15.4%	36.7%	15.0%	18.5%	29.8%
Attending academic events and competitions	58.9%	14.4%	15.6%	11.1%	58.5%	19.7%	12.6%	9.2%
Attending performance events	40.7%	17.6%	20.9%	20.9%	38.7%	17.9%	19.0%	24.4%
Joining and participating in the PTA	69.2%	14.3%	14.3%	2.2%	68.5%	14.4%	10.4%	6.6%

Note. Respondents could select more than one option, so percentages may not total 100%.

Table 5. How Far Did Your Mother, Father, and Older Sibling Go in School? Indicate Their Highest Level of Education. (Item 11)

	Garza			All HS		
	Mother	Father	Sibling	Mother	Father	Siblings
Did not finish high school	11.5%	10.3%	9.5%	21.5%	23.3%	7.6%
Graduated from high school or earned a GED	6.9%	14.9%	5.4%	16.0%	15.3%	11.2%
Currently attending a 2-year college or technical school	4.6%	4.6%	9.5%	1.8%	1.1%	8.8%
Currently attending a 4-year college	1.1%	1.1%	12.2%	0.7%	0.6%	18.6%
Attended a 2-yr community/junior college or vocational/technical school, but no degree	4.6%	4.6%	5.4%	5.7%	3.4%	6.3%
Graduated from a 2-yr community/junior college or vocational/technical school	4.6%	3.4%	4.1%	3.5%	2.8%	2.7%
Attended a 4-yr college, but did not complete a degree	11.5%	9.2%	5.4%	5.7%	5.8%	3.1%
Graduated from college	29.9%	17.2%	10.8%	20.9%	18.3%	11.1%
Completed a Master's degree or equivalent	8.0%	11.5%	6.8%	10.9%	11.4%	2.6%
Completed a Ph.D., M.D., or other advanced professional degree	9.2%	13.8%	0.0%	4.3%	6.5%	2.0%
Don't know or does not apply	8.0%	9.2%	31.1%	9.0%	11.4%	26.1%

Note. In 2010, “older” was added to describe on which sibling to report. If students had more than one older sibling, they were instructed to provide answers for the one with the highest level of education. If they had no older siblings, they were instructed to select *Does not apply*.

HIGH SCHOOL EXPERIENCES AND CAMPUS CLIMATE

Table 6. Including Your Current School, How Many Different High Schools Have You Attended? (Item 7)

	Garza			All HS
	2009	2010	2011	2011
1	11.5%	23.2%	13.2%	74.1%
2	52.9%	36.6%	61.5%	18.4%
3 or more	35.6%	40.2%	25.3%	7.5%

Note. Survey indicated that Eastside Memorial, Green and Global were not to be considered different high schools. Also, LASA was not to be considered a different high school than LBJ.

Table 7a. Please Indicate the Number of Years of High School in Which You Participated in Each of These Extracurricular Activities. (Items 12 and 14)

<i>Percentage who reported at least 1 year of participation*</i>	Garza		All HS	
	2010	2011	2010	2011
<i>In school</i>				
Music	42.5%	34.8%	33.7%	34.2%
Theater	21.8%	32.2%	18.8%	20.0%
Dance	21.5%	18.4%	21.5%	22.6%
Sports	46.3%	43.8%	55.6%	56.3%
Academic clubs, UIL academic competitions	16.7%	19.3%	20.0%	18.8%
Speech/debate	17.9%	17.8%	21.0%	19.8%
Student government	16.7%	16.5%	17.3%	14.4%
Career and technical student organizations	12.8%	10.3%	15.5%	14.1%
<i>Outside school</i>				
Music	31.6%	35.6%	29.9%	29.5%
Theater	4.0%	15.9%	8.7%	9.1%
Dance	14.9%	7.1%	13.7%	15.6%
Sports	37.7%	40.0%	49.6%	51.2%
Community service/volunteering	60.3%	58.9%	60.2%	58.4%
Environmental project/activities	25.3%	27.6%	25.9%	25.7%
Boy/Girl Scouts	9.0%	11.6%	10.2%	9.0%
Family care	25.0%	20.2%	21.1%	23.0%

Note. Respondents could select more than one option, so percentages may not total 100%.

* Response options were *Did not participate, 1 year, 2 years, 3 years, or, 4 years.*

Table 7b. Please Indicate the Number of Years of High School in Which You Participated in Each of These Extracurricular Activities. (Items 12 and 14)

	Garza					All HS				
	Did not participate	1 year	2 years	3 years	4 years	Did not participate	1 year	2 years	3 years	4 years
<i>In school</i>										
Music	65.2%	15.7%	6.7%	6.7%	5.6%	65.8%	11.5%	6.0%	4.0%	12.8%
Theater	67.8%	15.6%	8.9%	5.6%	2.2%	80.0%	11.8%	3.9%	1.8%	2.5%
Dance	81.6%	8.0%	9.2%	1.1%	0.0%	77.4%	8.4%	6.5%	3.4%	4.2%
Sports	56.2%	18.0%	15.7%	6.7%	3.4%	43.7%	11.7%	11.8%	8.8%	23.9%
Academic clubs & UIL academic competitions	80.7%	12.5%	3.4%	2.3%	1.1%	81.2%	6.6%	3.8%	3.3%	5.0%
Speech/debate	82.2%	12.2%	5.6%	0.0%	0.0%	80.2%	16.4%	2.0%	0.9%	0.5%
Student government	83.5%	10.6%	2.4%	2.4%	1.2%	85.6%	10.2%	2.0%	0.8%	1.5%
Career and technical student organizations	89.7%	6.9%	2.3%	0.0%	1.1%	85.9%	5.7%	3.9%	2.5%	1.9%
<i>Outside school</i>										
Music	64.4%	6.9%	8.0%	4.6%	16.1%	70.5%	7.4%	4.4%	2.9%	14.9%
Theater	84.1%	8.0%	2.3%	2.3%	3.4%	90.9%	4.4%	1.9%	0.9%	1.9%
Dance	92.9%	4.7%	1.2%	1.2%	0.0%	84.4%	5.1%	4.1%	1.8%	4.6%
Sports	60.0%	12.2%	13.3%	3.3%	11.1%	48.8%	9.0%	9.0%	6.3%	26.9%
Community service/volunteering	41.1%	20.0%	17.8%	8.9%	12.2%	41.6%	15.2%	11.4%	7.0%	24.8%
Environmental projects/activities	72.4%	17.2%	3.4%	1.1%	5.7%	74.3%	10.1%	5.1%	2.3%	8.1%
Boy/Girl Scouts	88.4%	4.7%	2.3%	2.3%	2.3%	91.0%	2.5%	1.5%	0.9%	4.2%
Family care	79.8%	6.7%	2.2%	2.2%	9.0%	77.0%	6.4%	3.5%	1.8%	11.4%

Table 8a. For Each of These Extracurricular Activities, Did You Spend More Than 10 Hours per Week During Your Senior Year on Them? (Items 13 and 15)

<i>Percentage indicating they spent more than 10 hours per week on each activity</i>	Garza 2011	All HS 2011
<i>In school</i>		
Music	2.2%	7.6%
Theater	4.4%	2.9%
Dance	0.0%	4.2%
Sports	13.5%	24.4%
Academic clubs and UIL academic competitions	3.4%	2.4%
Speech/debate	0.0%	0.9%
Student government	0.0%	0.7%
Career and technical student organizations	1.1%	2.4%
<i>Outside school</i>		
Music	8.0%	6.8%
Theater	1.1%	1.6%
Dance	0.0%	2.9%
Sports	11.2%	18.9%
Community service/volunteering	8.9%	5.6%
Environmental project/activities	2.3%	1.9%
Boy/Girl Scouts	0.0%	1.2%
Family care	6.8%	7.8%

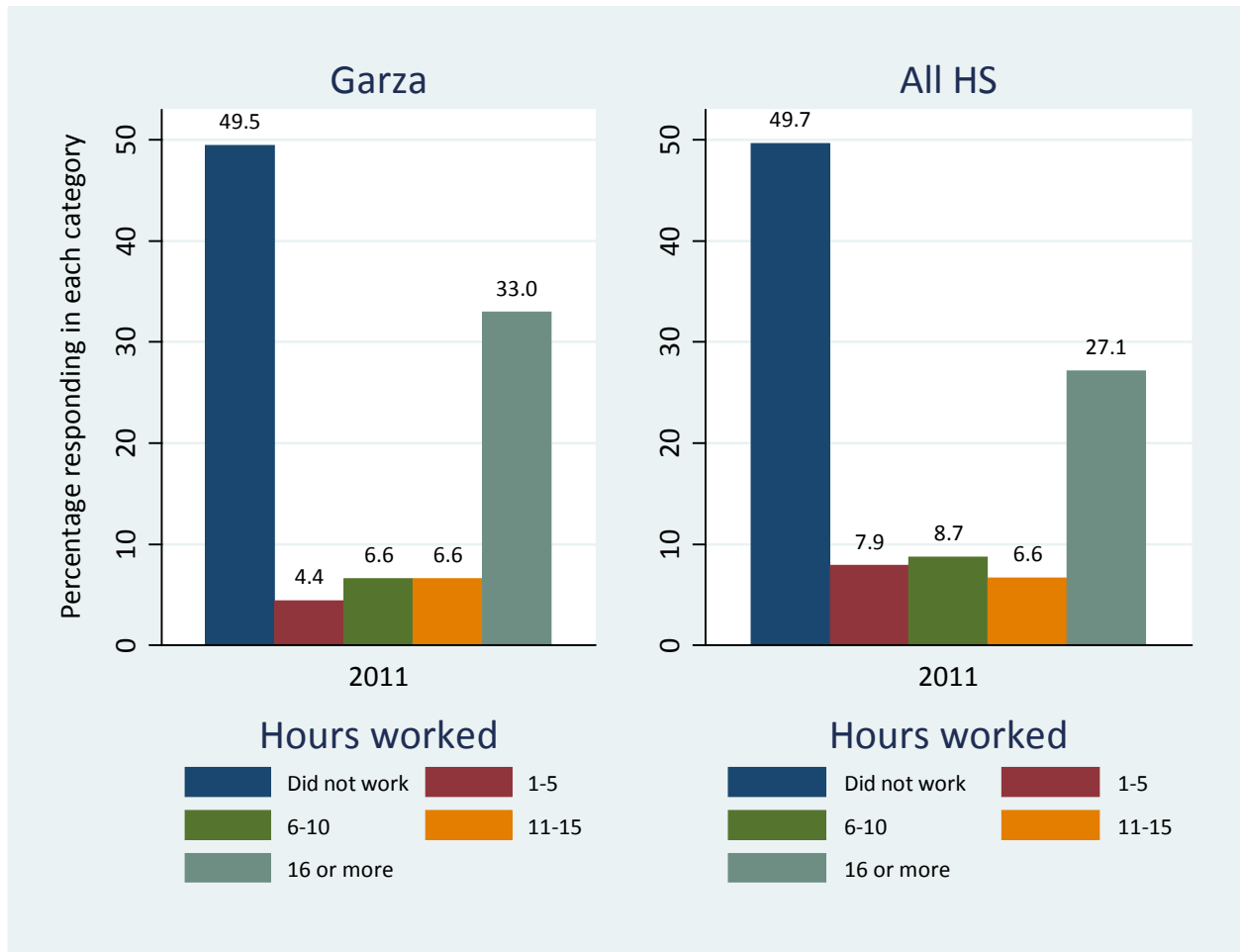
Note. Respondents could select more than one option, so percentages may not total 100%.

Table 8b. Indicate the Average Number of Hours Per Week During Your Senior Year That You Participated in the Following Extra-Curricular Activities (Includes Practices, Rehearsals, and Competitions) (Items 13 and 15)

	Garza					All HS				
	Did not participate	1-5 hours	6-10 hours	11-15 hours	16+ hours	Did not participate	1-5 hours	6-10 hours	11-15 hours	16+ hours
<i>In school</i>										
Music	85.4%	9.0%	3.4%	1.1%	1.1%	75.3%	9.8%	7.3%	3.1%	4.6%
Theater	83.3%	8.9%	3.3%	3.3%	1.1%	87.5%	7.4%	2.3%	1.4%	1.4%
Dance	94.2%	5.8%	0.0%	0.0%	0.0%	83.6%	8.6%	3.6%	1.8%	2.4%
Sports	76.4%	6.7%	3.4%	5.6%	7.9%	53.0%	11.4%	11.2%	10.5%	14.0%
Academic clubs & UIL academic competitions	92.0%	2.3%	2.3%	1.1%	2.3%	86.5%	8.4%	2.7%	1.0%	1.4%
Speech/debate	94.3%	4.6%	1.1%	0.0%	0.0%	88.2%	9.3%	1.6%	0.5%	0.4%
Student government	92.0%	8.0%	0.0%	0.0%	0.0%	88.7%	9.1%	1.5%	0.4%	0.2%
Career and technical student organizations	95.4%	3.4%	0.0%	0.0%	1.1%	88.8%	6.2%	2.5%	1.2%	1.2%
<i>Outside school</i>										
Music	71.3%	14.9%	5.7%	2.3%	5.7%	71.9%	15.4%	5.8%	2.3%	4.4%
Theater	87.5%	6.8%	4.5%	1.1%	0.0%	91.8%	5.0%	1.6%	0.6%	0.9%
Dance	94.3%	4.6%	1.1%	0.0%	0.0%	85.9%	8.0%	3.1%	1.1%	1.8%
Sports	70.8%	13.5%	4.5%	2.2%	9.0%	52.5%	16.0%	12.6%	6.7%	12.2%
Community service/volunteering	52.2%	30.0%	8.9%	1.1%	7.8%	48.4%	36.2%	9.8%	2.4%	3.2%
Environmental projects/activities	84.1%	11.4%	2.3%	1.1%	1.1%	78.6%	16.5%	3.0%	0.9%	1.0%
Boy/Girl Scouts	94.3%	5.7%	0.0%	0.0%	0.0%	92.5%	5.2%	1.0%	0.6%	0.6%
Family care	86.4%	2.3%	4.5%	0.0%	6.8%	79.4%	8.2%	4.6%	2.2%	5.5%

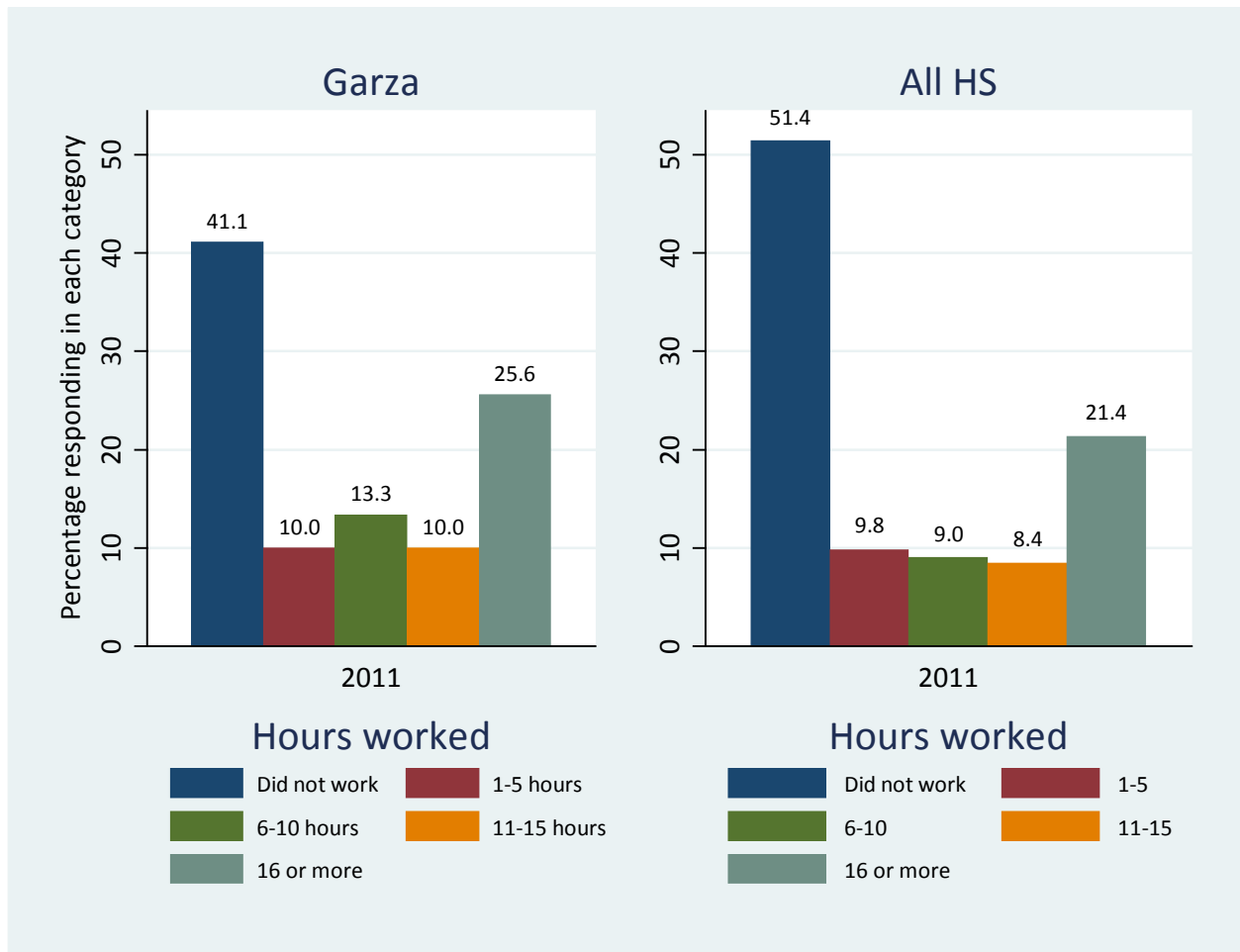
Note. Respondents could select more than one option, so percentages may not total 100%.

Figure 1. Indicate the Average Number of Hours Per Week That You Worked During Last Summer. (Item 16a)



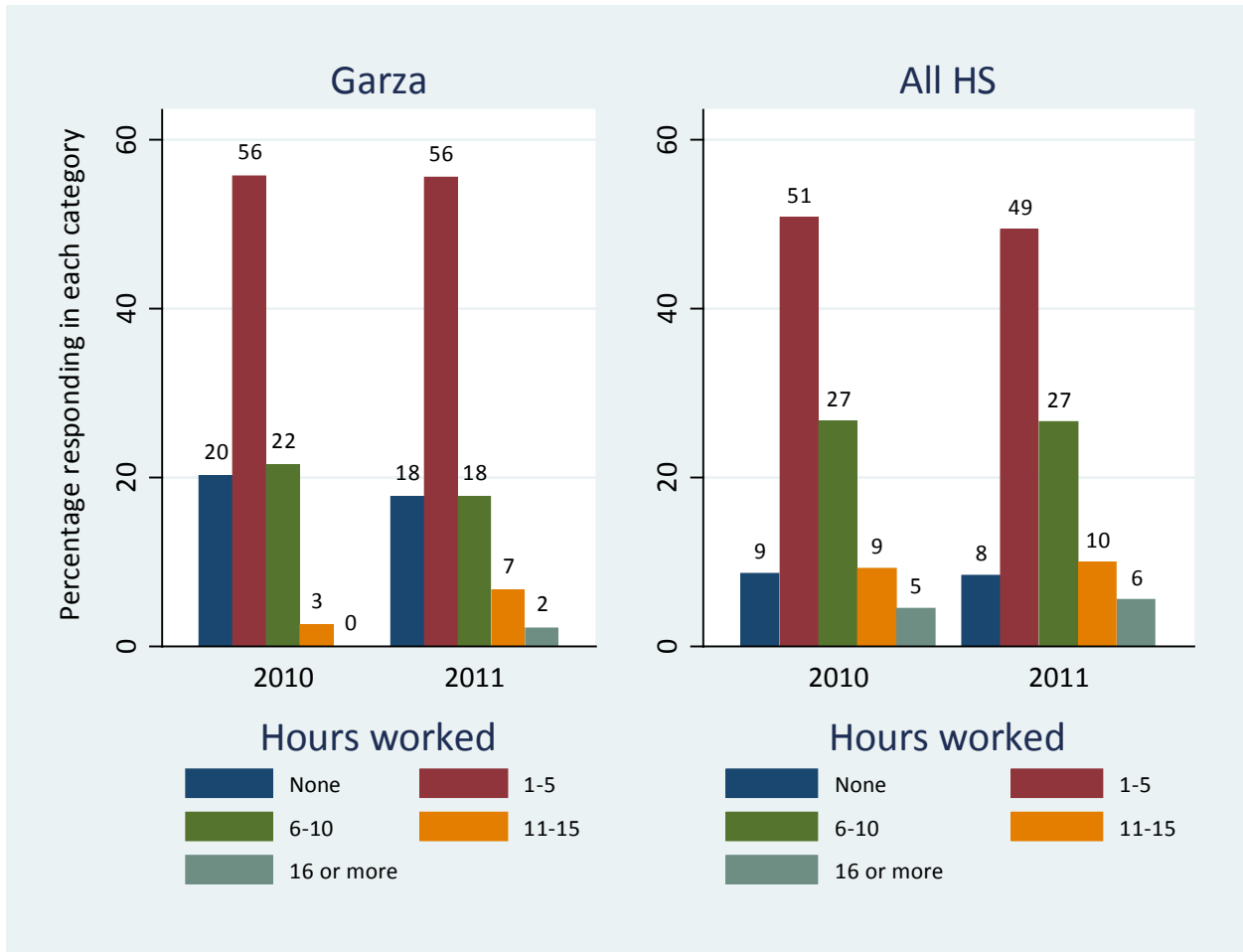
Note. Changes to this question preclude accurate comparisons to prior years.

Figure 2. Indicate the Average Number of Hours Per Week That You Worked During Your Senior Year. (Item 16b)



Note. Changes to this question preclude accurate comparisons to prior years.

Figure 3. Thinking Back on Your Years in High School, How Many Hours per Week Did You Typically Spend Studying, Doing Research, or Completing Homework Assignments Outside of Class? (Item 17)



Note. Results were rounded to nearest whole number, so percentages may not total 100%.

Table 9a. Mark the Answer That Best Indicates How You Feel (Item 18)

<i>Percentage who responded sometimes or always*</i>	Garza		All HS	
	2010	2011	2010	2011
I can do even the hardest schoolwork if I try	93.8%	93.3%	91.8%	91.6%
I enjoy doing my schoolwork	65.4%	67.8%	58.6%	59.9%
I feel/felt well prepared for TAKS	91.4%	90.2%	89.3%	90.7%
I try hard to do my best work	93.8%	89.1%	89.5%	90.7%
I feel successful in my schoolwork	95.1%	92.1%	90.3%	89.6%
I can reach the goals I set for myself	96.3%	94.4%	95.4%	94.7%
My homework helps me learn things I need to know	72.7%	66.7%	75.9%	76.2%
I know how I'm doing in school	97.4%	93.3%	92.2%	92.3%
My schoolwork makes me think about things in new ways	80.0%	78.9%	68.4%	69.2%
I have fun learning in my classes	83.8%	88.9%	76.5%	75.9%
My teachers connect what I am learning to my life outside of the classroom	72.5%	84.1%	66.1%	64.8%
I like to come to school	77.8%	84.3%	71.4%	72.5%

*Response options were *Never, Not a lot, Sometimes, Always, and Don't know.*

Table 9b. Mark the Answer That Best Indicates How You Feel (Item 18)

	Garza					All HS				
	Never	Not a lot	Sometimes	Always	Don't know	Never	Not a lot	Sometimes	Always	Don't know
I can do even the hardest schoolwork if I try	2.2%	4.4%	34.1%	58.2%	1.1%	2.7%	5.6%	42.4%	47.9%	1.5%
I enjoy doing my schoolwork	5.5%	26.4%	50.5%	16.5%	1.1%	11.2%	28.6%	50.6%	9.0%	0.5%
I feel/felt well prepared for TAKS	3.3%	6.5%	30.4%	59.8%	0.0%	2.9%	6.2%	23.5%	65.4%	2.0%
I try hard to do my best work	2.2%	8.7%	38.0%	51.1%	0.0%	2.3%	6.9%	43.6%	46.6%	0.6%
I feel successful in my schoolwork	3.3%	4.4%	47.3%	42.9%	2.2%	2.3%	8.0%	54.6%	34.3%	0.9%
I can reach the goals I set for myself	2.2%	3.3%	41.8%	51.6%	1.1%	1.6%	3.6%	37.4%	56.1%	1.3%
My homework helps me learn things I need to know	11.1%	21.1%	33.3%	31.1%	3.3%	6.4%	17.1%	47.4%	27.8%	1.3%
I know how I'm doing in school	3.3%	3.3%	25.3%	67.0%	1.1%	2.0%	5.6%	28.7%	62.6%	1.1%
My schoolwork makes me think about things in new ways	5.5%	15.4%	45.1%	33.0%	1.1%	8.3%	22.0%	46.9%	21.3%	1.4%
I have fun learning in my classes	3.3%	7.7%	51.6%	36.3%	1.1%	5.7%	18.2%	58.1%	17.3%	0.7%
My teachers connect what I am learning to my life outside of the classroom	5.6%	10.0%	47.8%	34.4%	2.2%	9.2%	25.5%	46.9%	16.8%	1.5%
I like to come to school	4.4%	11.1%	41.1%	42.2%	1.1%	10.3%	16.8%	49.8%	21.9%	1.1%

INSTRUCTION AND TECHNOLOGY

Table 10a. How Well Did Your High School Help You to Actively Develop Knowledge and Skills in the Following Areas? (Item 19)

<i>Percentage who responded Somewhat well or Very well*</i>	Garza			All HS
	2009	2010	2011	2011
Teamwork	88.5%	82.9%	90.2%	90.6%
Creative thinking	94.3%	92.7%	95.7%	90.6%
Problem solving	98.9%	92.7%	95.7%	92.4%
Conflict resolution	95.4%	86.6%	88.9%	84.2%
Personal health/fitness	79.1%	81.7%	82.6%	82.9%
Time management	85.1%	82.9%	89.0%	83.0%
Technology	93.0%	84.0%	90.2%	85.6%

* Response options were *Not well, Somewhat well, and Very well.*

Table 10b. How Well Did Your High School Help You to Actively Develop Knowledge and Skills in the Following Areas? (Item 19)

	Garza			All HS		
	Not well	Somewhat well	Very well	Not well	Somewhat well	Very well
Teamwork	9.8%	44.6%	45.7%	9.4%	47.9%	42.7%
Creative thinking	4.3%	27.2%	68.5%	9.4%	47.4%	43.2%
Problem solving	4.3%	38.0%	57.6%	7.6%	46.9%	45.5%
Conflict resolution	11.1%	34.4%	54.4%	15.8%	49.5%	34.7%
Personal health/fitness	17.4%	39.1%	43.5%	17.1%	47.6%	35.3%
Time management	11.0%	40.7%	48.4%	17.0%	49.2%	33.8%
Technology	9.8%	47.8%	42.4%	14.4%	50.8%	34.8%

Table 11a. Rate the Quality of Instruction You Feel You Received in the Following Areas. (Item 20)

<i>Percentage who responded Good or Excellent*</i>	Garza			All HS
	2009	2010	2011	2011
English Language Arts	93.1%	79.3%	90.2%	82.3%
Mathematics	82.6%	70.5%	71.6%	68.5%
Science	83.7%	67.9%	70.5%	68.6%
Social Studies	83.7%	78.2%	83.3%	79.2%
Computer/Technology	83.5%	69.6%	71.1%	67.5%
Foreign Language	72.6%	48.4%	54.3%	59.8%
Performing/Fine Arts	79.0%	72.9%	77.1%	73.2%
Career and Technical (CTE)	.	58.3%	68.5%	58.3%

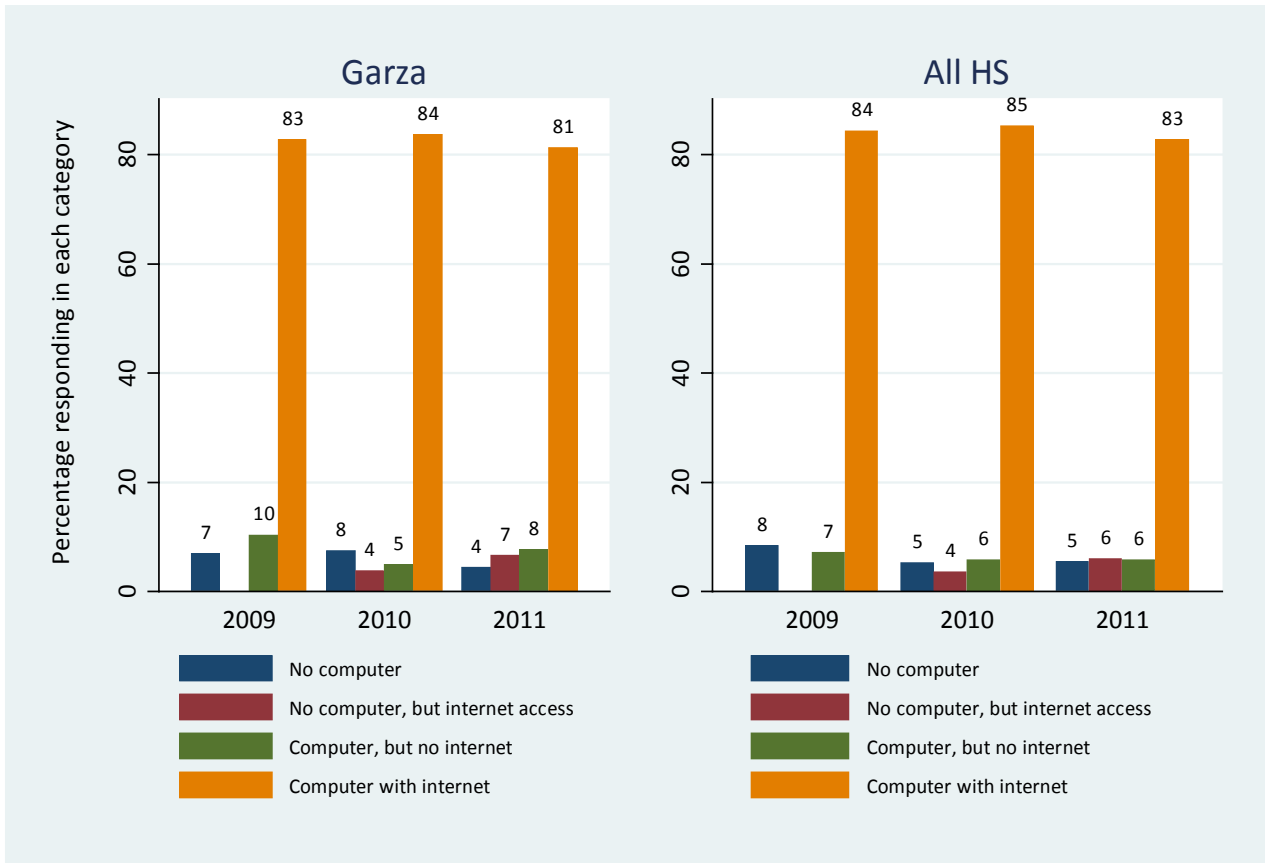
Note. Missing values, denoted by a period, indicate the item was not included on the respective year's survey.

*Response options included *Excellent, Good, Fair, and Poor*.

Table 11b. Rate the Quality of Instruction You Feel You Received in the Following Areas. (Item 20)

	Garza				All HS			
	Excellent	Good	Fair	Poor	Excellent	Good	Fair	Poor
English Language Arts	62.0%	28.3%	7.6%	2.2%	42.7%	39.6%	14.6%	3.0%
Mathematics	46.6%	25.0%	21.6%	6.8%	31.4%	37.2%	22.3%	9.2%
Science	45.5%	25.0%	21.6%	8.0%	28.7%	40.0%	25.0%	6.3%
Social Studies	54.4%	28.9%	16.7%	0.0%	37.1%	42.1%	18.0%	2.8%
Computer/Technology	43.4%	27.7%	19.3%	9.6%	27.5%	39.9%	25.5%	7.0%
Foreign Language	32.9%	21.4%	32.9%	12.9%	24.7%	35.1%	27.1%	13.1%
Performing/Fine Arts	54.3%	22.9%	18.6%	4.3%	39.7%	33.5%	21.3%	5.6%
Career and Technical	48.1%	20.4%	25.9%	5.6%	23.9%	34.5%	31.5%	10.2%

**Figure 4. Which of the Following Describes Your Computer and Internet Access at Home?
 (Item 21)**



Note. Results were rounded to nearest whole number, so percentages may not total 100%.

Table 12a. How Frequently Do You Use a Computer or Other Internet-Capable Devices (For Example, a Mobile Phone, iTouch, or iPad)? (Item 22)

<i>Percentage who responded At least once a week or more*</i>	Garza			All HS
	2009	2010	2011	2011
At home?	85.1%	86.4%	91.1%	88.1%
At school?	96.5%	96.3%	94.6%	84.9%
To present material in class, for example, using PowerPoint?	43.0%	46.9%	53.8%	30.4%
To type a paper or class assignment?	90.7%	85.2%	81.3%	58.0%
To search the Internet to complete class-related assignments?	89.5%	85.2%	82.4%	68.8%
To research college/career choices?	48.8%	45.7%	58.7%	52.4%
To complete online forms or applications for college/employment?	38.8%	37.0%	50.0%	48.1%
To communicate with teachers (e.g., email, IM, etc.)?	21.2%	37.0%	42.9%	33.9%
To monitor grades/progress in school?	23.3%	21.0%	30.0%	61.0%

*Responses were *Never, Less than once a week, Once or twice a week, Every day or almost every day.*

Table 12b. How Frequently Do You Use a Computer or Other Internet-Capable Devices (For Example, a Mobile Phone, iTouch, or iPad)? (Item 22)

	Garza				All HS			
	Never	Less than once a week	Once or twice a week	Every day or almost every day	Never	Less than once a week	Once or twice a week	Every day or almost every day
At home?	4.4%	4.4%	23.3%	67.8%	6.8%	5.1%	12.2%	76.0%
At school?	2.2%	3.3%	9.8%	84.8%	3.2%	11.9%	27.4%	57.5%
To present material in class, for example, using PowerPoint?	14.3%	31.9%	38.5%	15.4%	15.2%	54.5%	20.3%	10.1%
To type a paper or class assignment?	7.7%	11.0%	34.1%	47.3%	6.3%	35.8%	40.1%	17.9%
To search the Internet to complete class-related assignments?	7.7%	9.9%	28.6%	53.8%	5.3%	26.0%	41.2%	27.5%
To research college/career choices?	10.9%	30.4%	37.0%	21.7%	10.5%	37.1%	33.5%	18.9%
To complete online forms or applications for college/employment?	12.2%	37.8%	32.2%	17.8%	12.5%	39.3%	31.4%	16.7%
To communicate with teachers (e.g., email, IM, Facebook, etc.)?	17.6%	39.6%	24.2%	18.7%	29.4%	36.6%	18.9%	15.0%
To monitor grades/progress in school?	43.3%	26.7%	16.7%	13.3%	18.7%	20.3%	30.0%	31.0%

Table 13a. Indicate How Much You Agree With Each of the Following Statements About Technology Use at School: (Item 23)

Percentage who responded Agree or Strongly agree*	Garza		All HS	
	2010	2011	2010	2011
My teachers effectively use the technology resources that are available.	96.2%	92.3%	90.4%	90.9%
I would like to use more electronic communication with my classmates as part of my schoolwork.	66.7%	66.7%	83.1%	77.1%
I would like to use more electronic communication with my teachers.	67.9%	69.1%	78.8%	72.6%
I would like to use more online resources.	78.2%	73.3%	84.4%	80.4%

* Responses were Strongly agree, Agree, Disagree, Strongly disagree, and Don't know/unsure.

Table 13b. Indicate How Much You Agree With Each of the Following Statements About Technology Use at School: (Item 23)

	Garza				All HS			
	Strongly agree	Agree	Disagree	Strongly disagree	Strongly agree	Agree	Disagree	Strongly disagree
My teachers effectively use the technology resources that are available.	57.1%	35.2%	5.5%	2.2%	28.4%	62.5%	6.8%	2.3%
I would like to use more electronic communication with my classmates as part of my schoolwork.	27.2%	39.5%	28.4%	4.9%	28.0%	49.2%	18.5%	4.3%
I would like to use more electronic communication with my teachers.	28.4%	40.7%	27.2%	3.7%	23.9%	48.7%	23.0%	4.5%
I would like to use more online resources in my classes.	30.2%	43.0%	22.1%	4.7%	28.2%	52.2%	15.4%	4.2%

Figure 5. Do Your Parents Use ParentConnect / GradeSpeed to Monitor Your Grades? (Item 24)

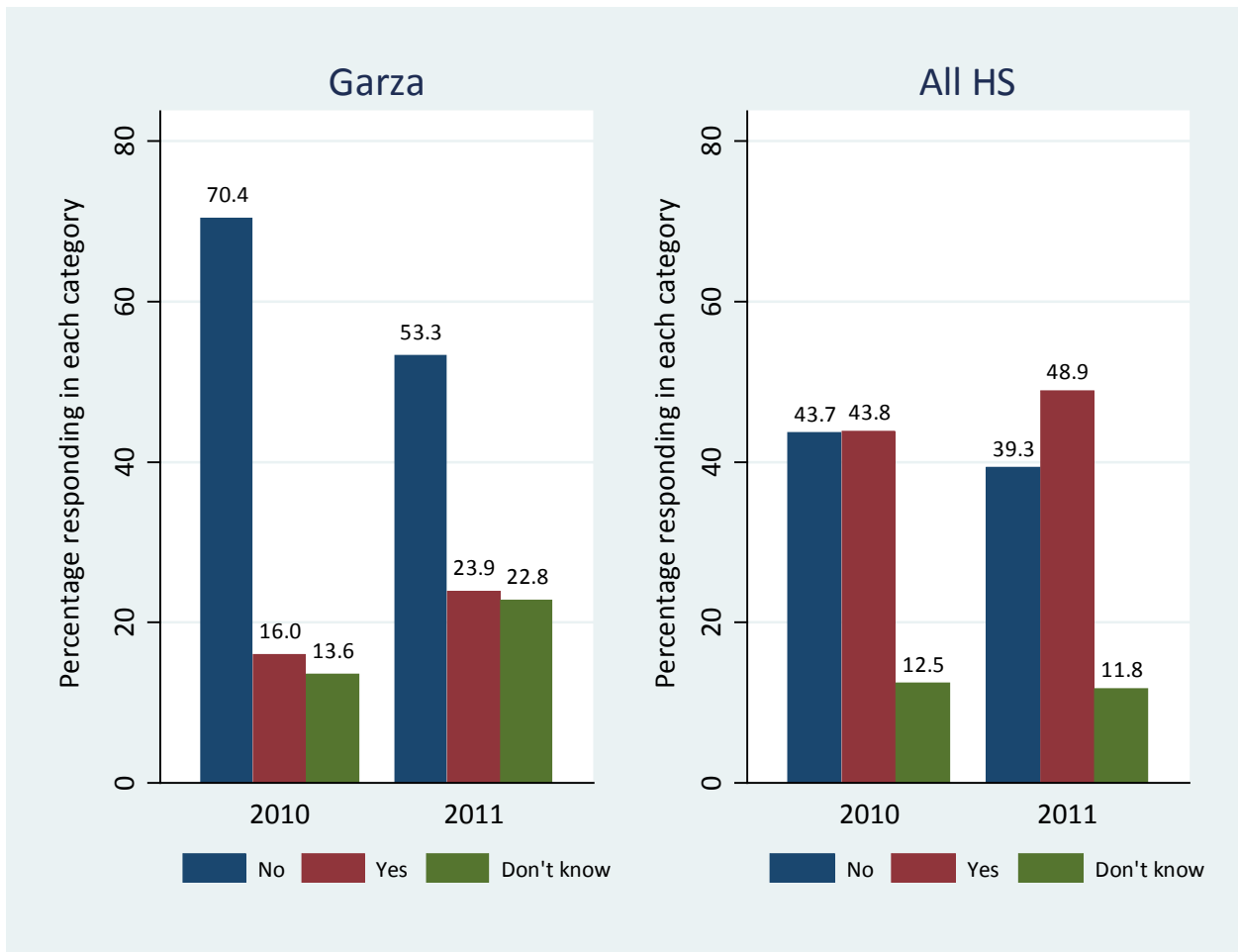


Table 14a. How Frequently Do You Log onto Naviance / Family Connection for the Following Activities? (Item 25)

<i>Percentage who responded Once a week or more*</i>	Garza		All HS	
	2010	2011	2010	2011
College search	11.1%	13.2%	18.0%	20.4%
Resume building	8.9%	6.6%	8.7%	9.5%
Career exploration	6.3%	12.2%	11.9%	13.3%
College visit sign up	6.4%	10.1%	12.1%	13.4%
Class rank and GPA inquiry	7.6%	7.7%	15.4%	17.9%
Counselor directed activities, such as personality questionnaires	12.7%	9.9%	8.2%	9.8%
Other	10.3%	6.2%	10.7%	14.7%

* Response options were *Never, Less than once a week, Once or twice a week, and Every day or almost every day.*

Table 14b. How Frequently Do You Log onto Naviance / Family Connection for the Following Activities? (Item 25)

	Garza				All HS			
	Never	Less than once a week	Once or twice a week	Every day or almost every day	Never	Less than once a week	Once or twice a week	Every day or almost every day
College search	37.4%	49.5%	11.0%	2.2%	37.2%	42.4%	17.0%	3.4%
Resume building	49.5%	44.0%	6.6%	0.0%	55.1%	35.4%	8.0%	1.5%
Career exploration	43.3%	44.4%	11.1%	1.1%	49.7%	37.0%	10.6%	2.7%
College visit sign up	50.6%	39.3%	10.1%	0.0%	45.9%	40.8%	11.2%	2.2%
Class rank and GPA inquiry	42.9%	49.5%	5.5%	2.2%	39.1%	43.0%	14.5%	3.4%
Counselor directed activities, such as personality or career questionnaires	38.5%	51.6%	8.8%	1.1%	53.3%	36.9%	7.7%	2.1%
Other	55.6%	38.3%	6.2%	0.0%	57.8%	27.5%	10.2%	4.5%

POSTSECONDARY PREPARATION AND ADVISING

Table 15. At What Time in Your Life Did You Start Thinking about College as a Possibility After High School? (Item 27)

	Garza			All HS
	2009	2010	2011	2011
As long ago as I can remember	41.9%	29.1%	46.2%	36.9%
In elementary school	10.5%	8.9%	5.5%	9.1%
In middle/junior high school	16.3%	15.2%	19.8%	21.0%
In high school	29.1%	44.3%	26.4%	30.7%
I've never thought about college as an option after high school	2.3%	2.5%	2.2%	2.2%

Table 16a. High School Preparation for Post-Graduation Opportunities (Item 28)

<i>Percentage who responded Somewhat well or Very well</i>	Garza			All HS
	2009	2010	2011	2011
How well prepared were you to plan your high school course selections?	87.2%	85.0%	90.0%	90.6%
How well prepared were you to meet your college and career goals?	80.2%	81.0%	91.1%	85.4%
How well prepared have you been for the college/technical/vocational school application process?	78.8%	78.5%	87.6%	81.3%
How well informed are/were you about obtaining financial aid for education after high school (whether or not you applied)?	89.5%	83.8%	90.0%	84.2%

Note. Response options were *Very well*, *Somewhat well*, and *Not well*.

Table 16b. High School Preparation for Post-Graduation Opportunities (Item 28)

	Garza			All HS		
	Very well	Somewhat well	Not well	Very well	Somewhat well	Not well
How well prepared were you to plan your high school course selections?	42.2%	47.8%	10.0%	41.5%	49.1%	9.4%
How well prepared were you to meet your college and career goals?	42.2%	48.9%	8.9%	36.0%	49.4%	14.6%
How well prepared have you been for the college/technical/vocational school application process?	39.3%	48.3%	12.4%	32.5%	48.8%	18.7%
How well informed have you been about obtaining financial aid for education after high school (whether or not you applied)?	53.3%	36.7%	10.0%	39.3%	44.9%	15.8%

Table 17. For Each of the Subjects Below, Indicate How Prepared You Feel to Complete College-Level Coursework. (Item 29)

	Garza				All HS			
	English/ Language Arts	Math	Science	Social Studies	English/ Language Arts	Math	Science	Social Studies
I am not prepared for regular or advanced college-level coursework	2.2%	9.1%	4.5%	3.3%	3.9%	8.3%	6.7%	4.3%
I will have to take remedial or developmental classes to prepare for college-level coursework	11.1%	33.0%	36.0%	17.8%	18.1%	28.1%	25.0%	18.0%
I am prepared for any college-level coursework	81.1%	48.9%	51.7%	72.2%	70.4%	54.3%	58.6%	69.8%
I do not know if I am prepared for college-level coursework	5.6%	9.1%	7.9%	6.7%	7.6%	9.3%	9.7%	7.9%

Table 18. How Did You Prepare for Continuing Education? (Item 30)

	Garza		All HS	
	2010	2011	2010	2011
Took Advanced Placement or International Baccalaureate classes	11.4%	32.6%	47.5%	53.0%
Visited college campuses	44.3%	55.8%	55.1%	56.6%
Attended college fairs	43.0%	51.2%	51.1%	47.1%
Met with counselor or Project Advance staff to discuss college plans and processes	.	60.5%	.	52.0%
Met with a college representative/recruiter at my high school	.	46.5%	.	44.7%
Completed and submitted a FAFSA	34.2%	47.7%	51.9%	56.7%
Completed and submitted a scholarship application	19.0%	36.0%	41.4%	44.3%
Took college entrance tests	36.7%	51.2%	68.2%	69.5%
Took test prep classes	21.5%	34.9%	39.6%	47.3%
Completed or are enrolled in ACC courses	17.7%	24.4%	34.6%	38.3%
Ordered and submitted transcripts	16.5%	33.7%	47.7%	54.2%
Senior ACC application process	32.9%	54.7%	39.7%	40.2%
Other college-level courses	1.3%	2.3%	6.3%	8.2%
None of the above	20.3%	4.7%	10.8%	8.2%

Note. Results for this item may not match prior year reports. Prior to 2011, the results for this question were based on the total number of survey respondents. In 2011, the results are based on the number of respondents completing this particular question and are consistent with the way all questions on the survey are analyzed. Respondents could select more than one option, so percentages may not total 100%. Missing values, denoted by a period, indicate the item was not included on the respective year's survey.

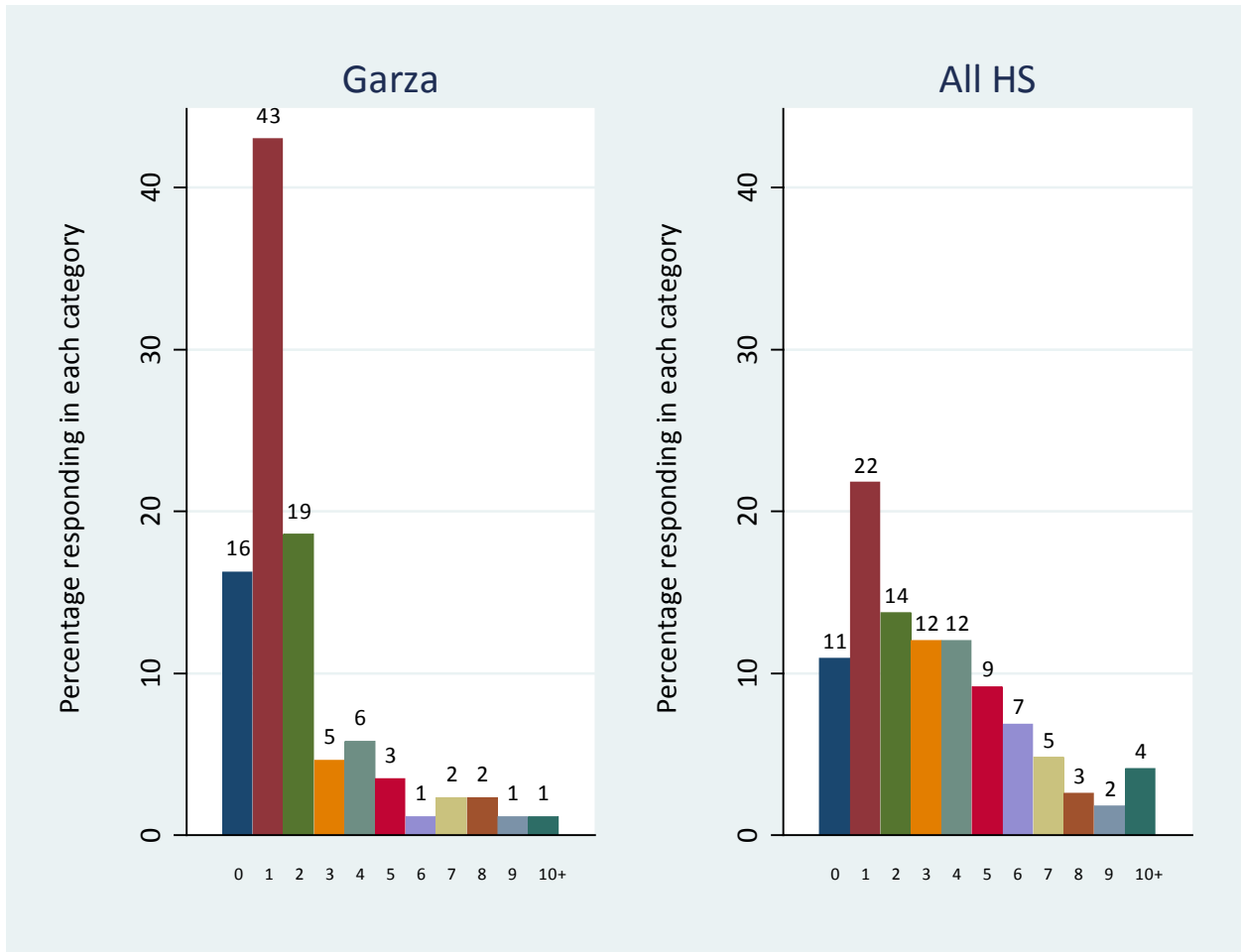
Table 19a. Have You Applied to the Following Types of Postsecondary Institutions? (Items 31, 32, and 33)

	Garza		All HS	
	2010	2011	2010	2011
Have you applied to a 2-year college	64.4%	77.8%	57.2%	61.7%
Have you applied to a 4-year college?	22.4%	38.3%	69.1%	71.5%
Have you applied to a business/technical/vocational school?	10.8%	13.5%	14.5%	12.2%

Table 19b. To How Many Postsecondary Institutions Have You *Applied*? (Items 31, 32, and 33)

	Garza		All HS	
	2010	2011	2010	2011
None	29.3%	16.3%	12.0%	10.9%
1 to 3	62.7%	66.3%	47.2%	47.6%
4 or more	8.0%	17.4%	40.9%	41.5%

Figure 6. To How Many Postsecondary Institutions Have You *Applied*? (Items 31, 32, and 33)

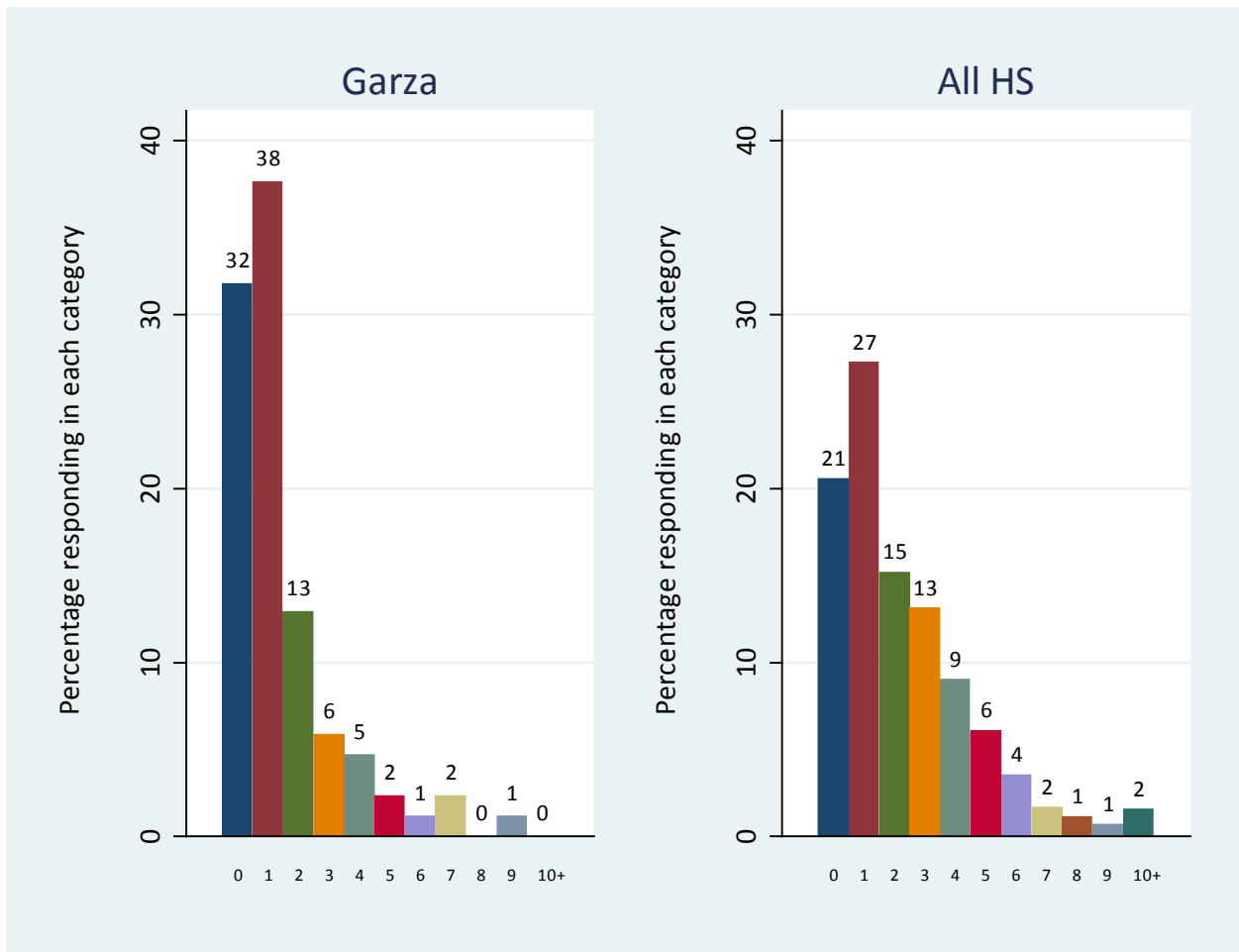


Note. Results were rounded to the nearest whole number, so percentages may not total 100%.

Table 20. To How Many Postsecondary Institutions Have You Been *Accepted*? (Items 34, 35, and 36)

	Garza		All HS	
	2010	2011	2010	2011
Have you been accepted to a 2-year college?	43.3%	61.0%	46.5%	51.9%
Have you been accepted to a 4-year college?	14.3%	29.5%	59.4%	58.8%
Have you been accepted to a business/technical/vocational school?	9.8%	9.5%	9.2%	8.3%

Figure 7. To How Many Postsecondary Institutions Have You *Been Accepted?* (Items 34, 35, and 36)



Note. Results were rounded to the nearest whole number, so percentages may not total 100%.

Table 21. Indicate Whether the Following People Helped You With Any of the Activities Listed Below. (Item 37)

	Garza				All HS			
	Advisory	College and Career Center Advisor	School counselor	Teacher	Advisory	College and Career Center Advisor	School counselor	Teacher
Helped select courses for work or college	20.7%	36.8%	65.5%	25.3%	21.5%	27.2%	49.1%	27.5%
Encouraged to take AP/honors courses	19.5%	20.7%	48.3%	44.8%	20.8%	14.3%	36.1%	50.4%
Encouraged to continue education	47.1%	56.3%	83.9%	62.1%	44.7%	36.3%	52.1%	57.4%
Talked about colleges/schools	32.2%	51.7%	64.4%	35.6%	27.1%	34.2%	37.8%	35.4%
Discussed careers	20.7%	48.3%	52.9%	31.0%	28.5%	30.8%	33.6%	32.3%
Encouraged to apply to multiple schools	23.0%	48.3%	42.5%	25.3%	28.7%	36.5%	38.2%	33.0%
Helped complete applications for college	13.8%	50.6%	34.5%	11.5%	13.6%	34.7%	26.0%	18.9%
Helped with financial aid (FAFSA and/or scholarships)	14.9%	51.7%	31.0%	8.0%	13.2%	36.3%	24.3%	14.8%
Helped choose college	12.6%	41.4%	39.1%	20.7%	15.0%	26.8%	22.8%	22.7%
Helped plan for college expenses	13.8%	48.3%	39.1%	13.8%	14.4%	31.1%	22.2%	15.3%
Helped with college application essays or personal statements	12.6%	33.3%	34.5%	32.2%	13.6%	26.5%	20.6%	37.2%
I never talked to this person about college or careers.	27.6%	17.2%	17.2%	10.3%	26.8%	23.1%	22.9%	15.6%

Note. Results for this item may not match prior year reports. Prior to 2011, the results for this question were based on the total number of survey respondents. In 2011, the results are based on the number of respondents completing this particular question and are consistent with the way all questions on the survey are analyzed. Respondents could select more than one option, so percentages may not total 100%.

Table 22. In Which of These Programs Did You Participate? (Item 38)

	Garza		All HS	
	2010	2011	2010	2011
Advancement via Individual Determination (AVID)	10.4%	5.7%	8.5%	7.4%
ACC Early College Start/Dual credit	.	23.9%	.	35.5%
ACC College Connections	17.9%	34.1%	20.0%	19.4%
Immigrant College Access	3.0%	4.5%	2.7%	3.4%
None of the above	49.3%	42.0%	54.4%	48.9%

Note. Results for this item may not match prior year reports. Prior to 2011, the results for this question were based on the total number of survey respondents. In 2011, the results are based on the number of respondents completing this particular question and are consistent with the way all questions on the survey are analyzed. Respondents could select more than one option, so percentages may not total 100%. Missing values, denoted by a period, indicate the item was not included on the respective year's survey.

Table 23. If You Participated in Any of The Programs from Item 38, Indicate Whether the Programs Helped You With Any of the Activities Listed Below. (Item 39)

	Garza				All HS			
	AVID	ACC-Early College Start / Dual Credit	ACC-College Connections	Immigrant College Access Program	AVID	ACC-Early College Start / Dual Credit	ACC-College Connections	Immigrant College Access Program
Helped select courses for work or college	50.0%	44.0%	30.6%	0.0%	29.0%	37.6%	17.2%	9.2%
Encouraged to take AP/honors courses	40.0%	36.0%	8.3%	0.0%	30.9%	28.4%	9.0%	4.8%
Encouraged to continue education	40.0%	56.0%	38.9%	0.0%	34.1%	36.6%	18.1%	10.6%
Talked about colleges/schools	30.0%	36.0%	22.2%	0.0%	33.3%	21.0%	14.7%	9.7%
Discussed careers	40.0%	40.0%	27.8%	8.3%	32.0%	22.9%	15.0%	10.3%
Encouraged to apply to multiple schools	40.0%	40.0%	16.7%	0.0%	30.3%	17.6%	12.3%	11.2%
Helped complete applications for college	20.0%	28.0%	25.0%	0.0%	27.4%	14.6%	12.5%	9.7%
Helped with financial aid (FAFSA and/or scholarships)	20.0%	36.0%	30.6%	0.0%	24.6%	13.9%	12.2%	12.1%
Helped choose college	20.0%	36.0%	25.0%	0.0%	26.5%	17.1%	11.7%	8.6%
Helped plan for college expenses	30.0%	36.0%	25.0%	0.0%	26.7%	15.9%	12.3%	9.7%
Helped with college application essays or personal statements	20.0%	32.0%	8.3%	0.0%	29.3%	15.1%	10.2%	8.4%

Note. Results for this item may not match prior year reports. Prior to 2011, the results for this question were based on the total number of survey respondents. In 2011, the results are based on the number of respondents completing this particular question and are consistent with the way all questions on the survey are analyzed. Respondents could select more than one option, so percentages may not total 100.

Table 24. Which of the Following Did a Family Member Do to Help You Prepare for Life After High School Graduation? (Item 40)

	Garza 2011	All HS 2011
Talked to you about career and/or college options	84.9%	81.6%
Talked to you about finances	81.4%	71.1%
Talked to you about your responsibilities as an adult	80.2%	77.5%
Talked to you about what a career and/or college would be like	72.1%	70.1%
Helped you with financial aid (FAFSA and/or scholarships)	54.7%	57.0%
Helped you complete applications for college or vocational/technical schools	43.0%	46.6%
Encouraged you to apply to several different colleges	48.8%	60.9%
No one in my family talked to me about or helped me with these things.	9.3%	10.0%

Note. Results for this item may not match prior year reports. Prior to 2011, the results for this question were based on the total number of survey respondents. In 2011, the results are based on the number of respondents completing this particular question and are consistent with the way all questions on the survey are analyzed. Respondents could select more than one option, so percentages may not total 100%.

Table 25. Indicate If You Know At Least One Teacher Who Would Do The Following. (Item 41)

	Garza		All HS	
	2010	2011	2010	2011
Would be willing to give you extra help with your schoolwork if needed	88.5%	95.4%	85.9%	87.1%
Would be willing to help you with a personal problem	82.1%	89.7%	73.9%	76.2%
Cares about how you're doing in school	82.1%	93.1%	81.4%	83.8%
Would be willing to write you a recommendation for a job or college	80.8%	87.4%	81.9%	84.0%
Knows what you will be doing next year	59.0%	75.9%	66.1%	67.3%
Would be willing to help you even after you graduate	73.1%	82.8%	68.4%	67.7%

Note. Respondents could select more than one option, so percentages may not total 100%.

Table 26. Were Your School Counselors and Project Advance Staff Available to Talk to You About College and Careers? (Item 42)

	Garza		All HS	
	Counselor	Project ADVANCE facilitator	Counselor	Project ADVANCE facilitator
Yes, they were available and I talked to them	78.2%	68.3%	58.2%	56.7%
Yes, but I didn't try to talk to them	13.8%	18.3%	23.5%	22.2%
No. I tried and wasn't able to meet with them.	0.0%	1.2%	9.1%	4.6%
No, but I never tried to meet with them	8.0%	12.2%	9.2%	16.5%

Note. This was a new item in 2011.

Table 27. How Easy Has It Been for You and Your Parents to Understand the Process of Applying for Financial Aid? (Item 43)

	Garza			All HS
	2009	2010	2011	2011
Difficult	4.9%	10.5%	10.3%	11.8%
Some parts easy, some parts difficult	50.6%	35.5%	43.7%	46.6%
Easy	21.0%	23.7%	27.6%	24.9%
Did not apply for financial aid	23.5%	30.3%	18.4%	16.7%

Table 28. How Do You Plan to Pay for Your Education After High School? (Item 44)

	Garza		All HS	
	2010	2011	2010	2011
Scholarships and/or grants	47.4%	59.5%	60.5%	65.0%
Loans	32.1%	33.3%	39.7%	41.4%
Family or personal savings	37.2%	53.6%	52.7%	55.2%
Working during the school year	33.3%	54.8%	47.8%	52.9%
Working during the summer	28.2%	50.0%	50.6%	56.3%
I don't know	20.5%	13.1%	14.8%	14.4%

Note. Results for this item may not match prior year reports. Prior to 2011, the results for this question were based on the total number of survey respondents. In 2011, the results are based on the number of respondents completing this particular question and are consistent with the way all questions on the survey are analyzed. Respondents could select more than one option, so percentages may not total 100%.

Table 29. If You Did Not Submit a Financial Aid Application, Why Not? (Item 45)

	Garza		All HS	
	2010	2011	2010	2011
I do not need financial aid to attend college	34.5%	45.9%	20.9%	23.5%
My parents were not willing to submit private financial information	10.3%	5.4%	7.7%	8.1%
My family did not think we would qualify for or were eligible for financial aid	6.9%	13.5%	22.1%	21.8%
I do not plan to go to college	6.9%	8.1%	10.1%	12.9%
I did not know about the financial aid process	41.4%	27.0%	39.2%	33.7%

Table 30. Without Including Any Financial Aid (Loans, Grants, or Scholarships), Do These Estimates Sound Right to You? (Item 46)

	Garza				All HS			
	No, they cost a lot less	Yes, that's about right	No, they cost a lot more	I have no idea	No, they cost a lot less	Yes, that's about right	No, they cost a lot more	I have no idea
Full-time (12 hours) tuition and fees at ACC cost = about \$700 a semester	12.0%	50.6%	7.2%	30.1%	6.7%	37.4%	7.4%	48.5%
Full-time tuition and fees at UT Austin = about \$4,700 a semester	4.8%	36.9%	26.2%	32.1%	3.3%	26.5%	26.6%	43.6%
Full-time tuition and fees at Harvard University = about \$17,000 a semester	2.5%	17.3%	35.8%	44.4%	3.8%	20.2%	25.2%	50.9%
The total cost of books for full-time college = between \$1,000 and \$2,000 a school year	6.1%	47.6%	11.0%	35.4%	6.2%	45.2%	7.7%	40.9%

Note. This was a new item in 2011.

ADDITIONAL RESULTS

Figure 8a. What Is the *One* Thing That Was Most Important to Keeping You Going Through School All the Way to Graduation? (Item 47, Garza)

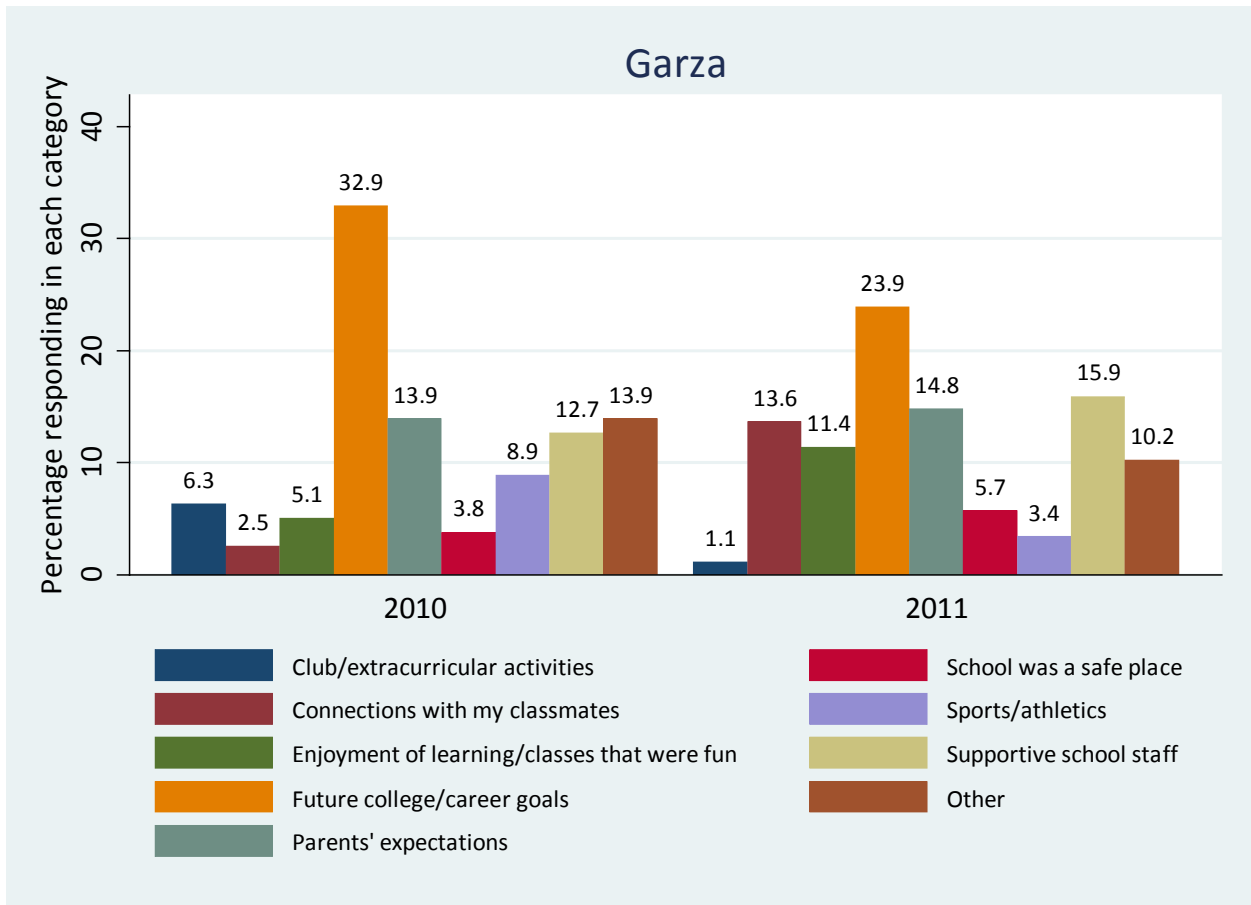


Figure 8b. What Is the *One* Thing That Was Most Important to Keeping You Going Through School All the Way to Graduation? (Item 47, All High Schools)

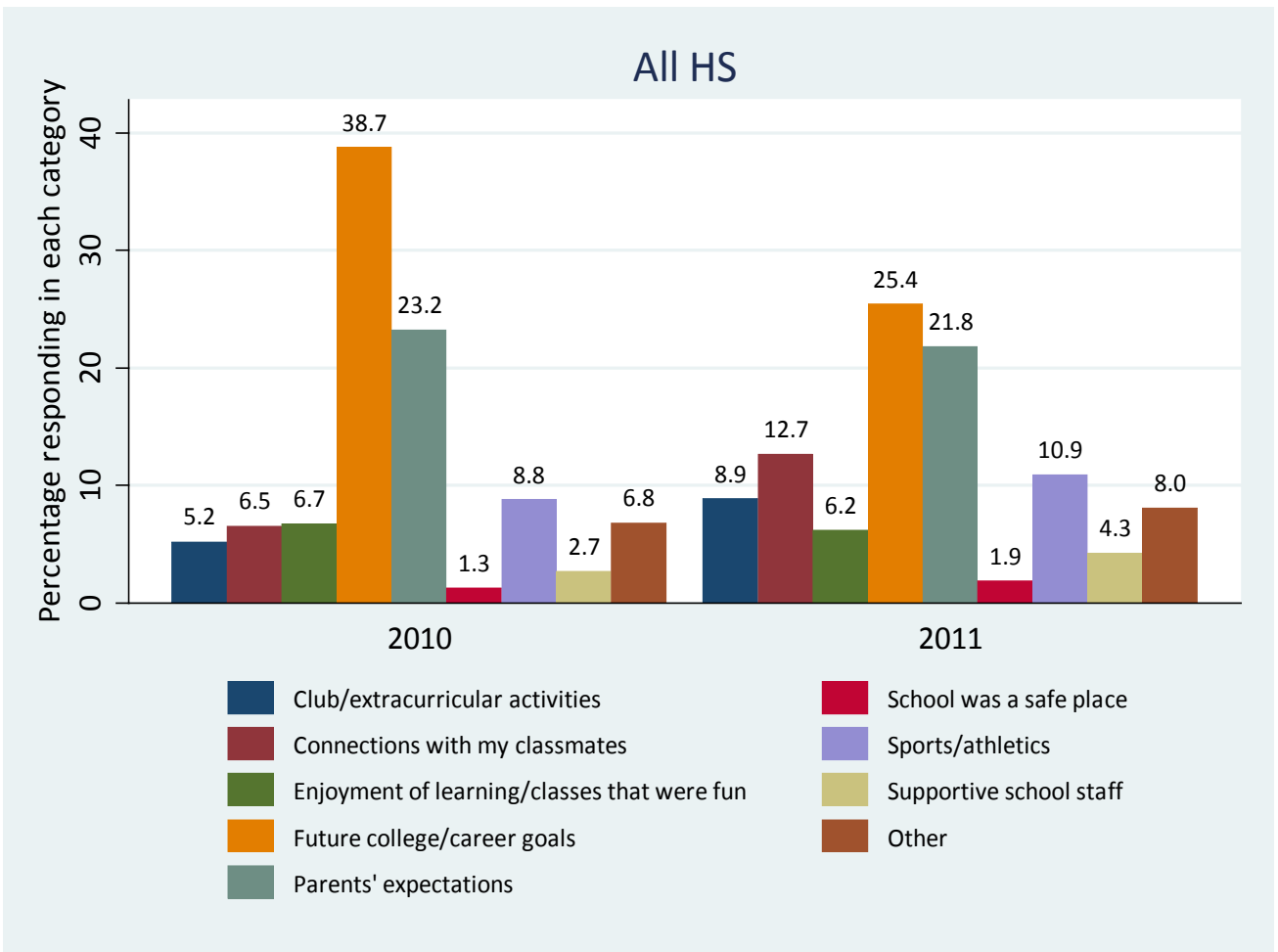


Table 31. How Would You Finish This Sentence? “If I Had Not Enrolled at Garza When I Did, I Would Have ...” (Item 6)

	Garza
Dropped out of high school without finishing	14.1%
Transferred to another high school in my district	12.1%
Earned my GED instead of a regular diploma	16.2%
I'm not sure	30.3%
Other	27.3%

Note. This was a new item in 2011.