

# Results of the 2011 Student Substance Use and Safety Survey

September, 2011



## EASTSIDE GREEN TECH HIGH SCHOOL

### Description of Survey

Every year a self-report student survey of substance use and school safety is administered to a random, representative sample of AISD students. The survey is used to track student knowledge, attitudes, and self-reported behavior over time. In the spring of 2011 a sample of 8,480 students in grades 6-12 submitted valid responses to the district's annual survey of substance use and safety issues, yielding a response rate of 73%.<sup>1</sup> All item results are attached.

### How should sample data be interpreted?

When it is not feasible to survey an entire population, samples are used instead. However, when a sample is used to make inferences about a population the results must be interpreted with caution. For example, although 87% of a sample may select a particular survey response, this does not necessarily mean 87% of the entire population feels the same way. To interpret the sample data cautiously, we have used the following information to construct an interval that describes the range within which the result for your campus population is likely to fall:

- Population size: In this case, the number of students at your campus.
- Sample size: In this case, the number of survey respondents from your campus.
- Desired level of confidence: In this case, 95%.

The 95% confidence interval is commonly used, indicating that you can be 95% confident that the true population result will fall within the constructed interval.

### How should Confidence Intervals be used to interpret your campus data?

***Based on the EastsideGreenTech HS sample of 140 students and population enrollment of 482, the confidence interval for EastsideGreenTech HS is + and – 7 percentage points.***

To make inferences about your campus population using the sample data, the results should be interpreted with the computed confidence interval of 7 percentage points on each side of the sample statistics. For example, in 2011, 32% of respondents from your campus indicated that their friends belonged to gangs (see Q16, p.10). Applying the confidence interval (i.e., adding and subtracting 7 percentage points) to the 32% yields a range of 25% - 39%. Therefore, you can be 95% confident that somewhere between 25% - 39% of all students at your campus would indicate that their friends belong to a gang. When making comparisons between item results from year to year, please remember that small changes may have occurred by chance alone. The confidence interval for 2010 was 5 percentage points. Therefore, only differences of 12 percentage points or greater (5%+7%) should be considered statistically significant when comparing the results from two different years.

---

<sup>1</sup> A total of 9,004 surveys were returned to the Department of Program Evaluation from an original sample of 11,660 students. Of those returned, 524 surveys were removed from analysis due to invalid responses.

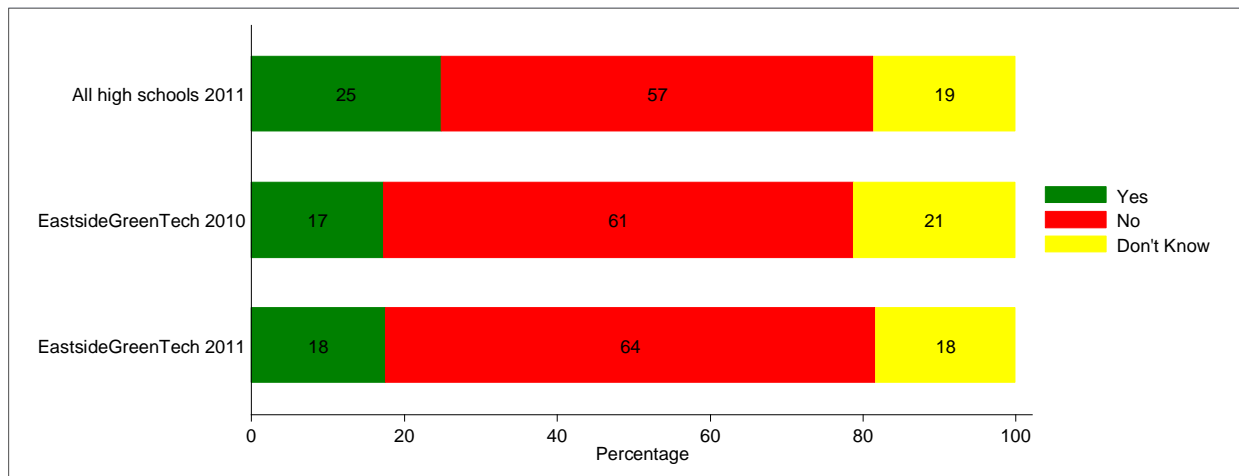
## RESPONDENT DEMOGRAPHICS AND ITEMS THAT ADDRESS BOTH SUBSTANCE USE AND SAFETY

### Survey Sample Demographics

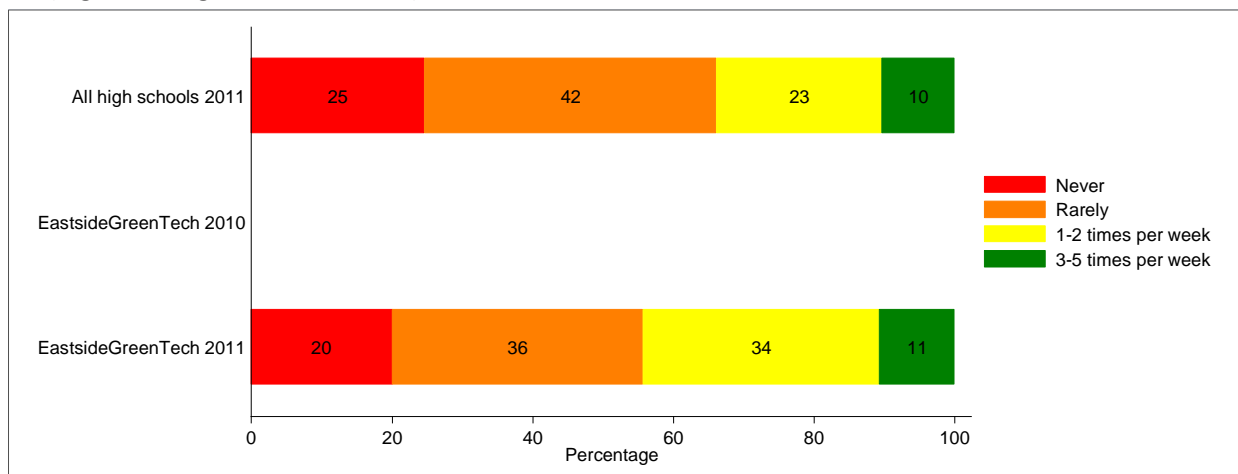
	Gender		Grade				Total
	Male	Female	9th	10th	11th	12th	
<b>Eastside Green Tech 2010</b>	34 56%	28 44%	47 30%	14 16 %	0 27 %	1 27 %	189
<b>Eastside Green Tech 2011</b>	74 53%	65 47%	10 7%	32 23%	32 23%	66 47%	140
<b>All high schools 2011</b>	1,741 49%	1,835 51%	1,067 30%	878 24%	886 25%	768 21%	3,610

Note: Numbers may not sum to total because some students skipped the demographic questions.

Q22: Do one or both of your parents usually attend school sponsored open houses, PTA meetings or other school events?

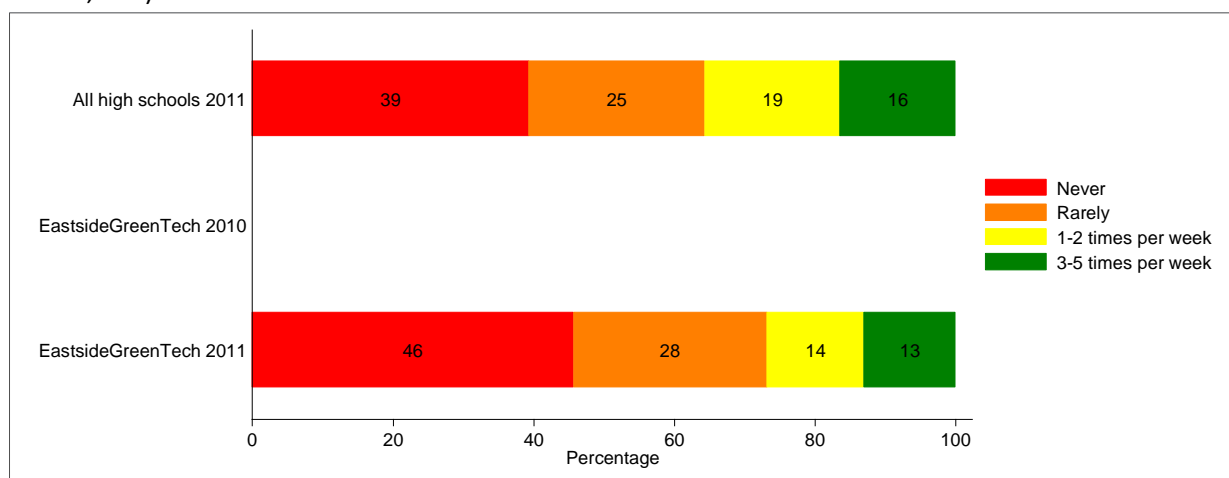


Q4. How often do you participate in after school programs to help you with your school work (e.g., tutoring, homework, etc.) ?



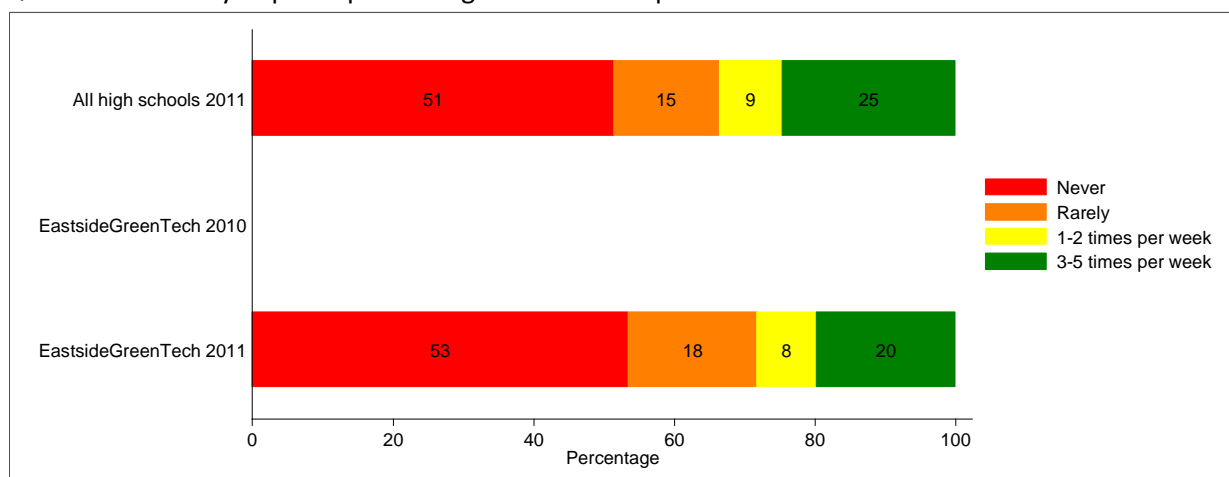
Note. This question was not asked in the 2009-2010 survey

Q5. How often do you participate in other after school programs (e.g. clubs, art, technology, leadership, dance, etc.) ?



Note. This question was not asked in the 2009-2010 survey.

Q6. How often do you participate in organized school sports?



Note. This question was not asked in the 2009-2010 survey.

Q23: During this school year, have you brought any of the following items to school?

	Eastside Green Tech 2010-2011	Percentage point change from 2009-2010*	All high schools 2010-2011
Illegal drugs	11%	0	10%
Tobacco	10%	0	8%
Knives	9%	-1	8%
Prescription drugs	8%	4	7%
Alcohol	7%	3	6%
Other weapons	6%	1	5%
Gun	1%	-1	3%
None of the above	78%	0	81%

\*Negative percentage point changes indicate fewer students reported bringing those items to school in 2010-2011 than in 2009-2010.

Q26: Of the following, which do you consider to be the most serious problem on your campus?

	Eastside Green Tech 2010-2011	Percentage point change from 2009-2010*	All high schools 2010-2011
<b>Marijuana use</b>	34%	-7	31%
<b>Student fighting and physical aggression</b>	12%	1	11%
<b>Student harassment, threats, and intimidation</b>	7%	0	8%
<b>Alcohol use</b>	1%	0	5%
<b>Prescription drug use</b>	7%	5	4%
<b>Student vandalism, criminal mischief</b>	7%	4	3%
<b>Student weapon possession</b>	2%	0	3%
<b>Tobacco use</b>	2%	0	2%
<b>Violence or threats toward staff</b>	0%	-3	1%
<b>None of these are serious problems on my campus</b>	27%	0	33%

Note. Percentages may sum to more than 100% because respondents were allowed to choose multiple items.

\* Negative percentage point changes indicate fewer students reported those items as the most serious problem on their campus in 2010-2011 than in 2009-2010.

Q7. During this school year, have you received any information on drugs, alcohol, or violence from any of the following school sources?

	Eastside Green Tech 2010-2011	Percentage point change from 2009-2010*	All high schools 2010-2011
<b>Advisory/seminar class</b>	53%	12	47%
<b>Health class</b>	38%	-1	44%
<b>Science class</b>	49%	21	35%
<b>Another class</b>	37%	3	33%
<b>Special school event about tobacco, drugs, alcohol, or violence</b>	25%	6	25%
<b>Guidance counselor</b>	21%	6	13%
<b>School nurse †</b>	27%	N/A	12%
<b>Afterschool program †</b>	24%	N/A	12%
<b>Student support group meetings at school</b>	23%	11	11%
<b>Other school source not mentioned above</b>	20%	-1	17%
<b>None of the above</b>	26%	-6	20%

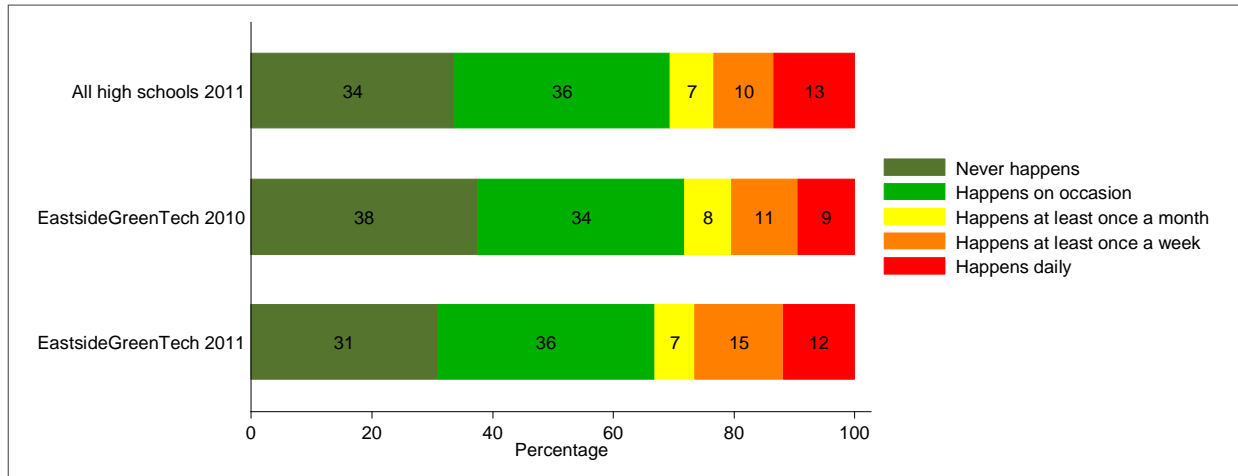
Note. Percentages may sum to more than 100% because respondents were allowed to choose multiple items.

\* Positive percentage point changes indicate more students reported having received information on drugs, alcohol, or violence from school sources in 2010-2011 than in 2009-2010.

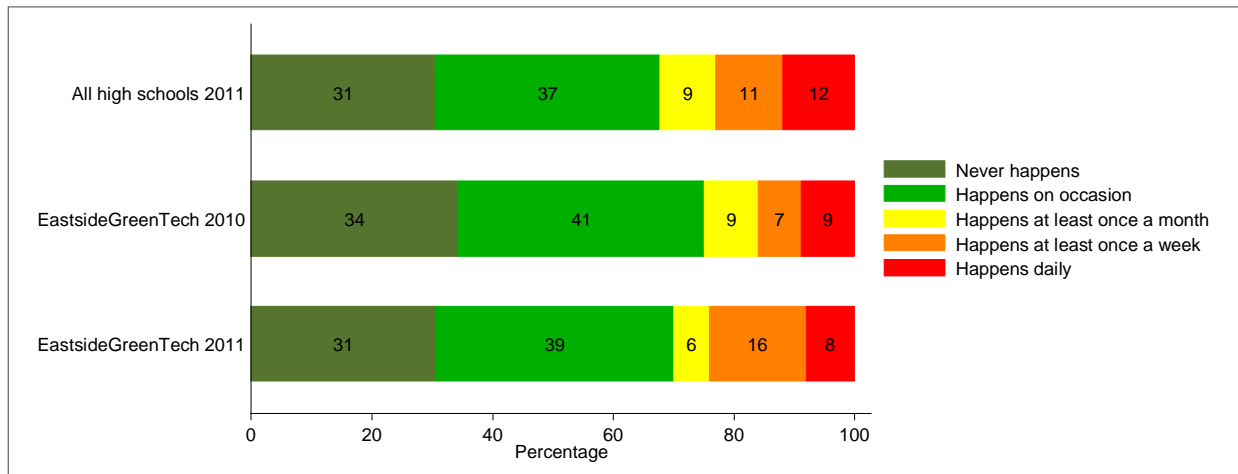
† The item was not asked in the 2009-2010 survey.

## SCHOOL SAFETY ITEMS

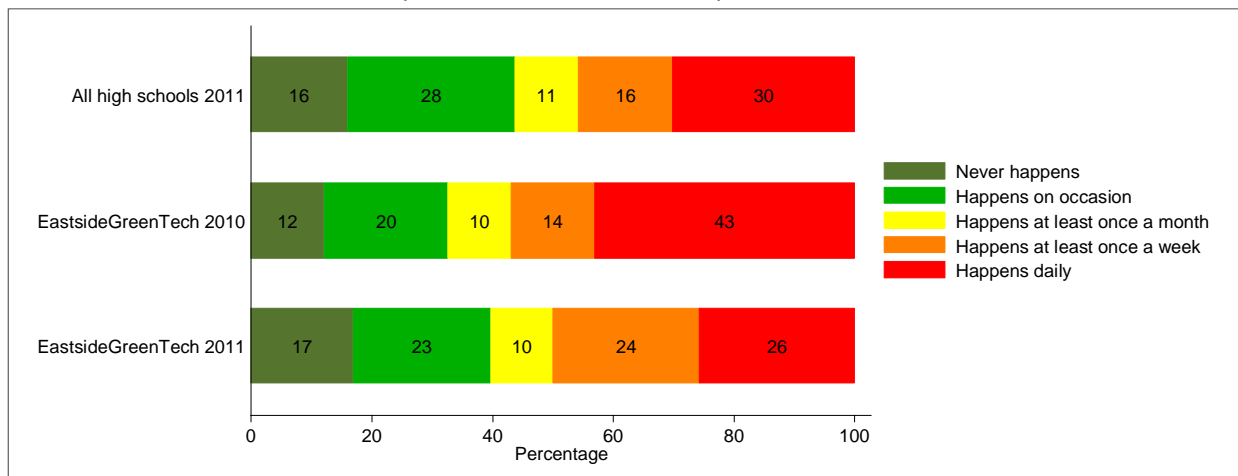
Q15a: How often does racial tension occur at your school?



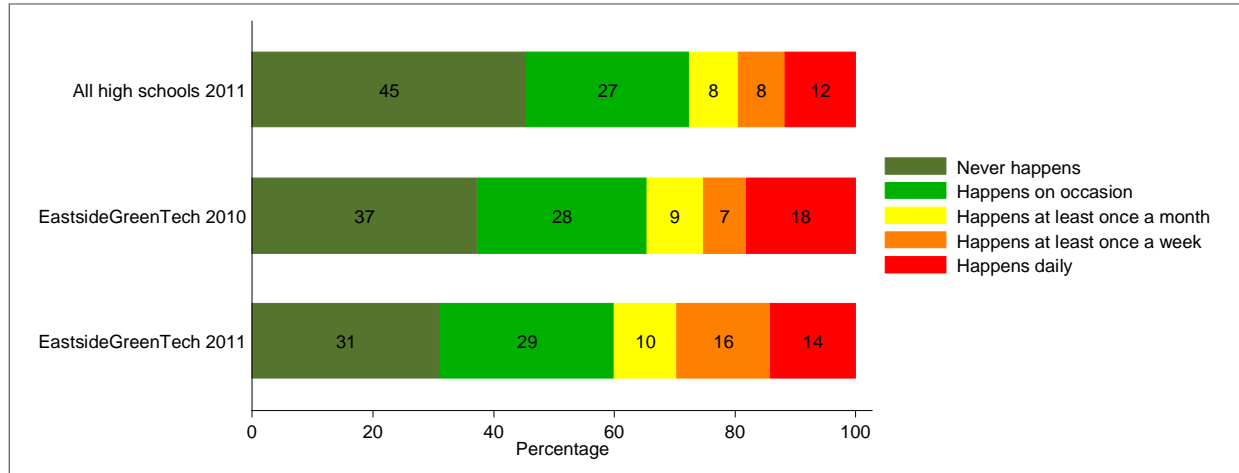
Q15b: How often does student bullying occur at your school?



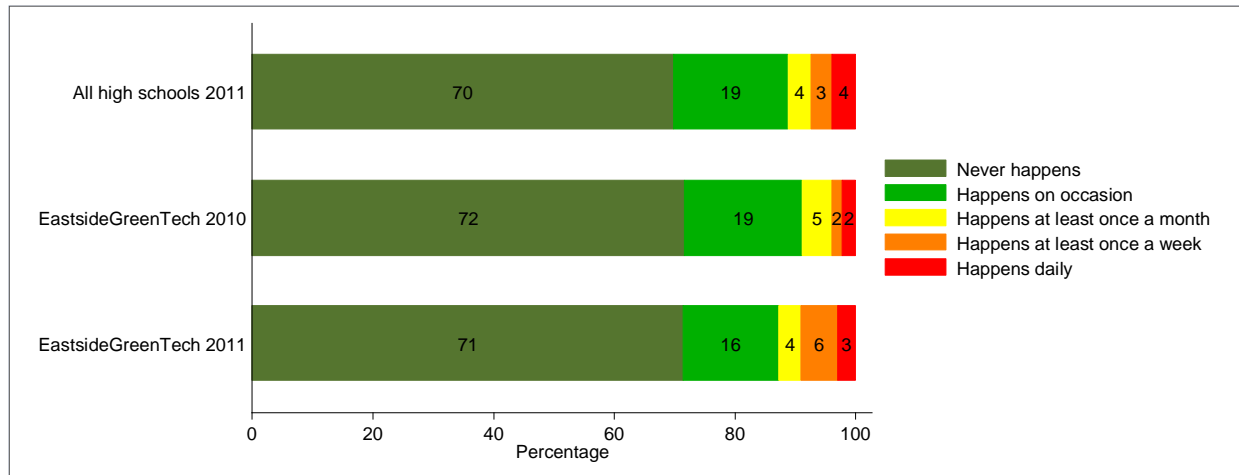
Q15c: How often do acts of disrespect for teachers occur at your school?



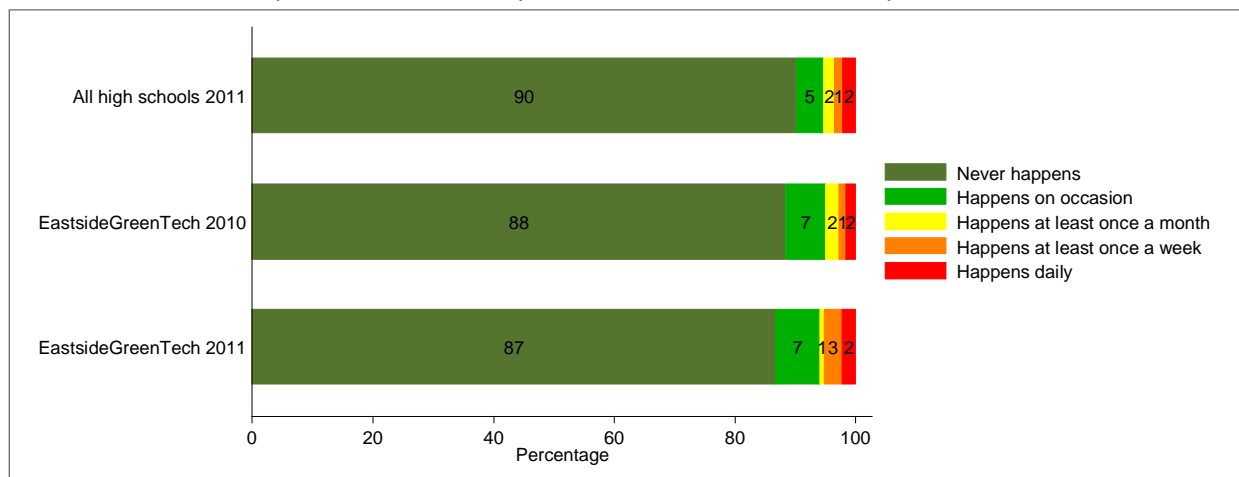
Q15d: How often do gang activities occur at your school?



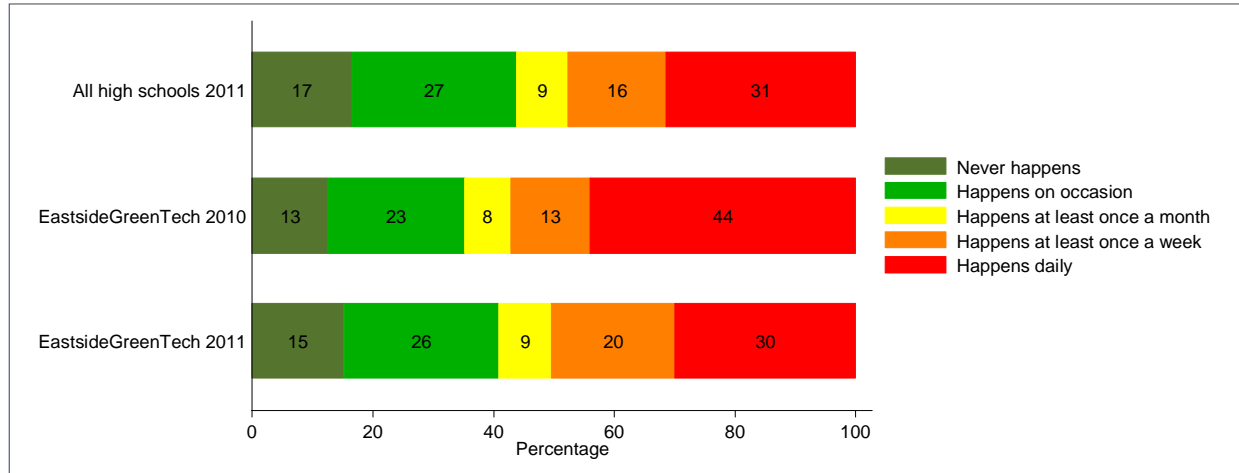
Q15e: How often have you experienced any type of bullying at your school?



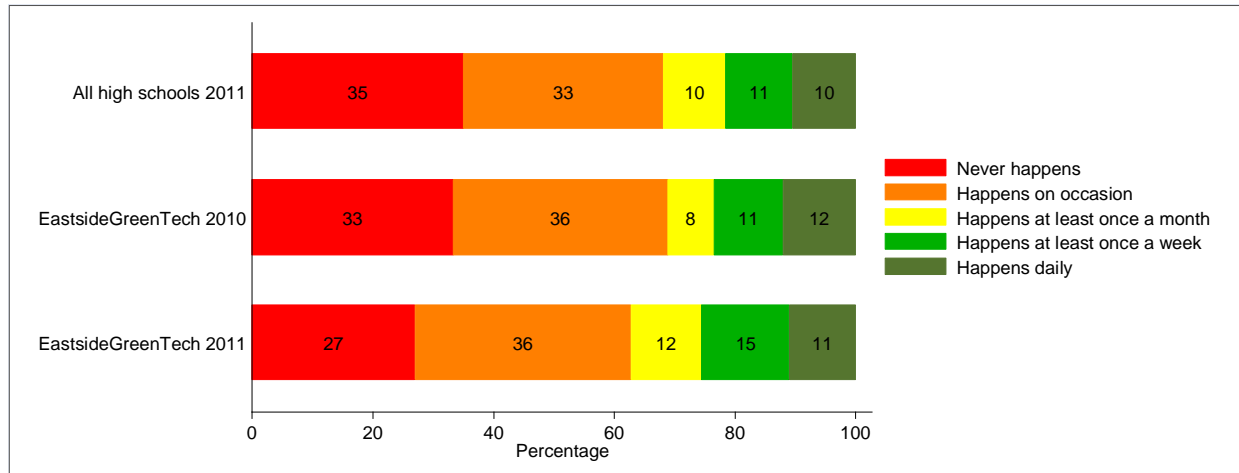
Q15f: How often were you absent because you did not feel safe on the way to/from school?



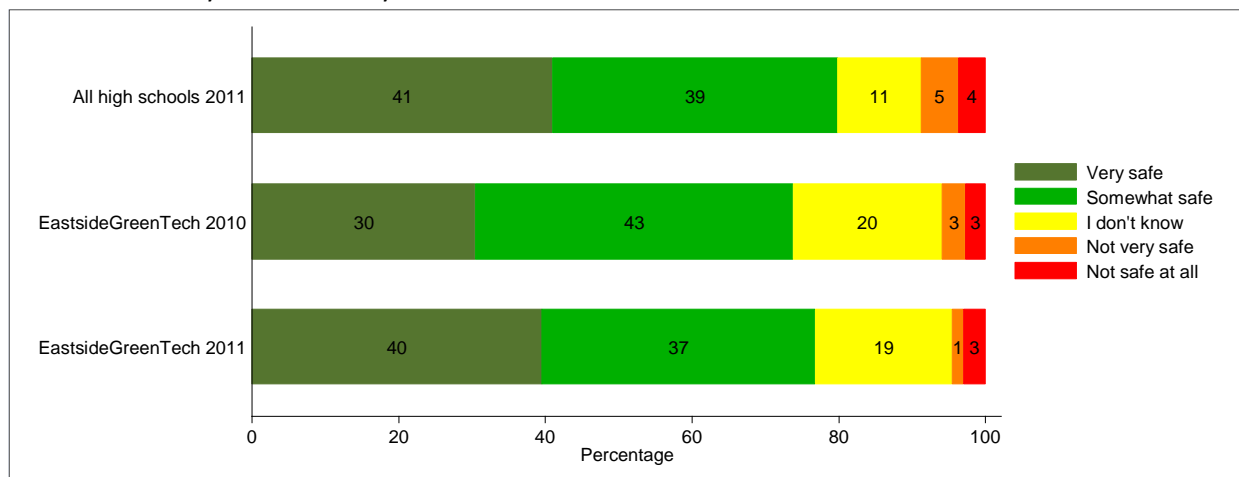
Q15g: How often does your teacher have to interrupt class to deal with student misbehavior?



Q15h: Do teachers or staff give you praise or rewards for good behavior?



Q8: How safe do you feel when you are at school?



Q9: During the last month, did you miss one or more school days due to any of the following reasons?

	Eastside Green Tech 2010-2011	Percentage point change from 2009-2010*	All high schools 2010-2011
Was sick	57%	-2	58%
Had to do something with family	49%	7	38%
Was too tired	44%	8	33%
Wanted to hang out with friends	28%	8	21%
Felt too sad or depressed to attend †	22%	N/A	15%
Didn't have a way to get to school	25%	4	15%
Didn't get along well with teachers	18%	5	11%
Had to go to work †	12%	N/A	7%
Didn't feel safe at school	6%	2	6%
Didn't feel safe on the way to/from school	7%	2	4%
None	17%	1	24%

Note. Percentages may sum to more than 100% because respondents were allowed to choose multiple items.

\* Negative percentage point changes indicate fewer students reported missing school due to any of the above reasons in 2010-2011 than in 2009-2010.

† The item was not asked in the 2009-2010 survey.

Q10: During this school year, have you experienced any of the following types of bullying at school?

	Eastside Green Tech 2010-2011	Percentage point change from 2009-2010*	All high schools 2010-2011
Verbal	20%	2	21%
Social	11%	-7	20%
Racial or ethnic harassment	15%	-2	15%
Physical	4%	-7	11%
Sexual harassment	5%	-3	10%
Cyber bullying	5%	1	8%
Hurtful or controlling dating behavior †	1%	N/A	7%
Written	4%	0	5%
None	68%	6	10%

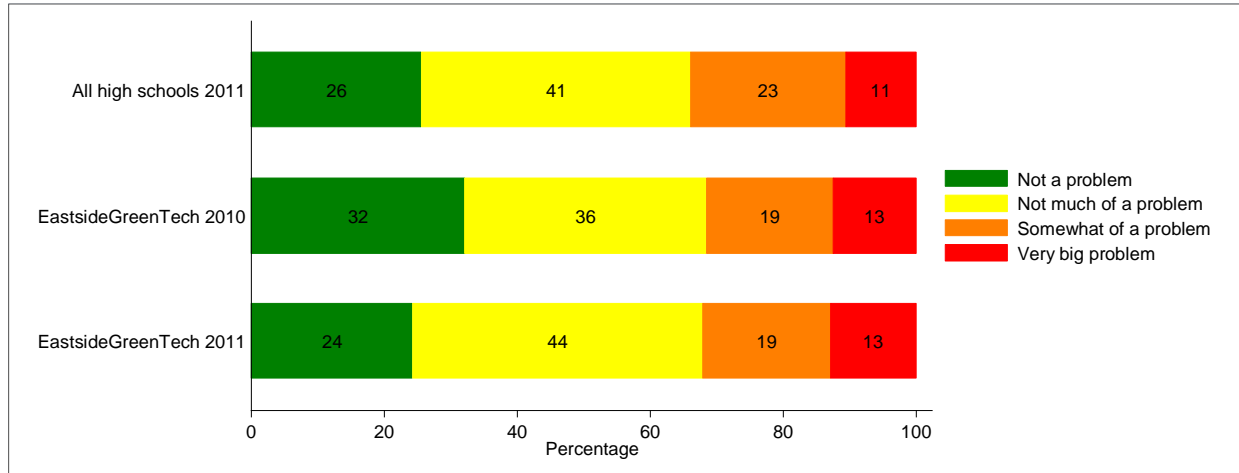
Note. Percentages may sum to more than 100% because respondents were allowed to choose multiple items.

\* Negative percentage point changes indicate fewer students reported experiencing types of bullying in 2010-2011 than in 2009-2010.

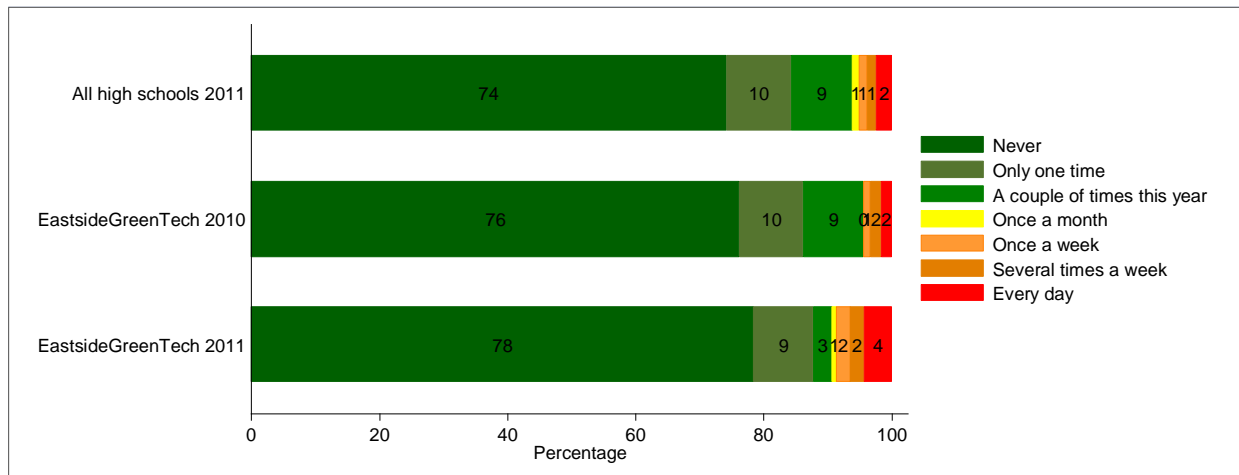
† The item was not asked in the 2009-2010 survey.



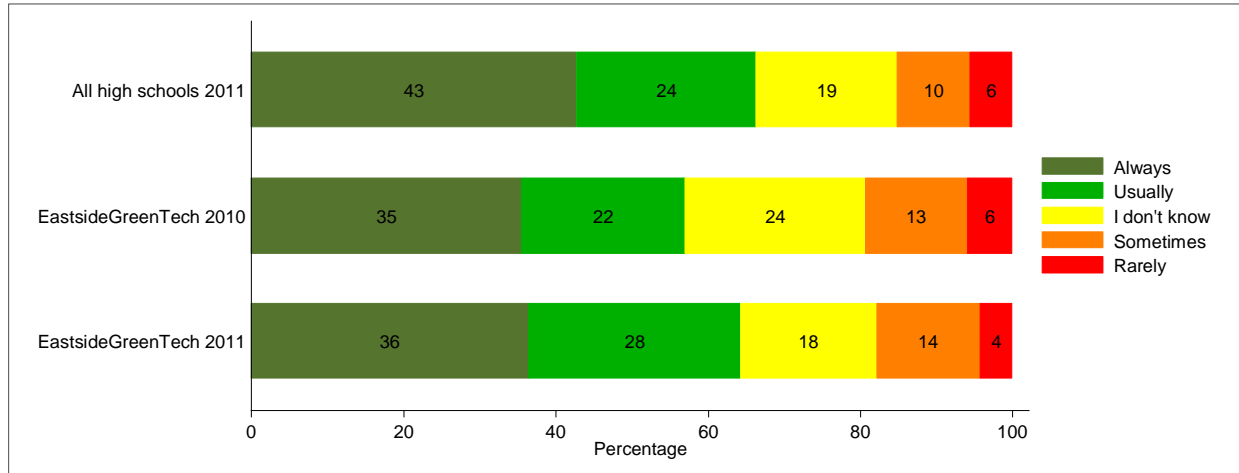
Q12: How big a problem do you think bullying is at your school?



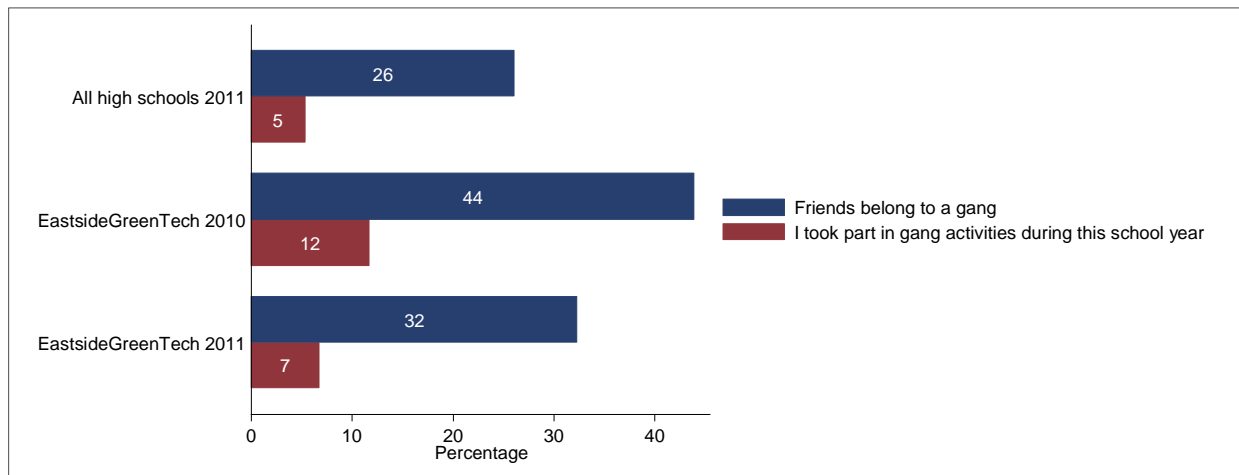
Q11: During this school year, how often have you or your close friends been physically harmed or threatened with physical harm by another student at your school?



Q14: Are school rules about verbal or physical assaults or fighting enforced by school staff?



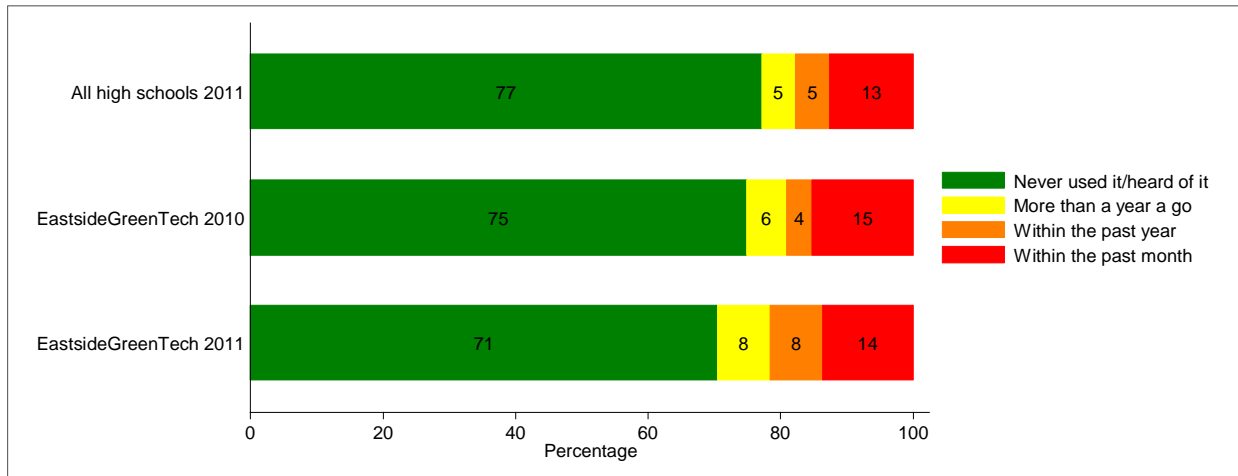
Q16-Q17: Do any of your friends belong to a gang? During this school year, did you take part in any gang activities?



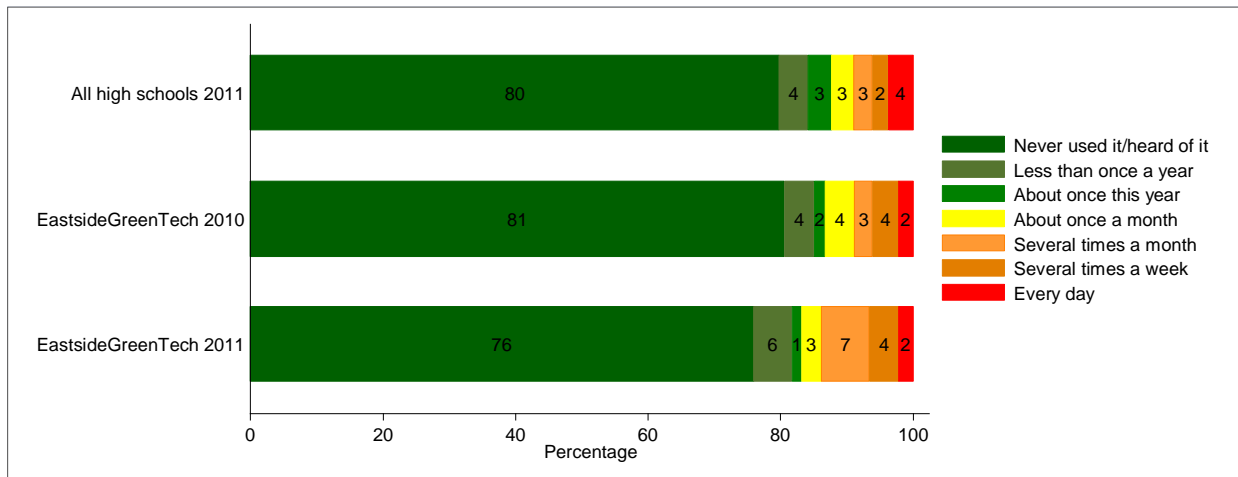
## SUBSTANCE USE ITEMS

### Tobacco:

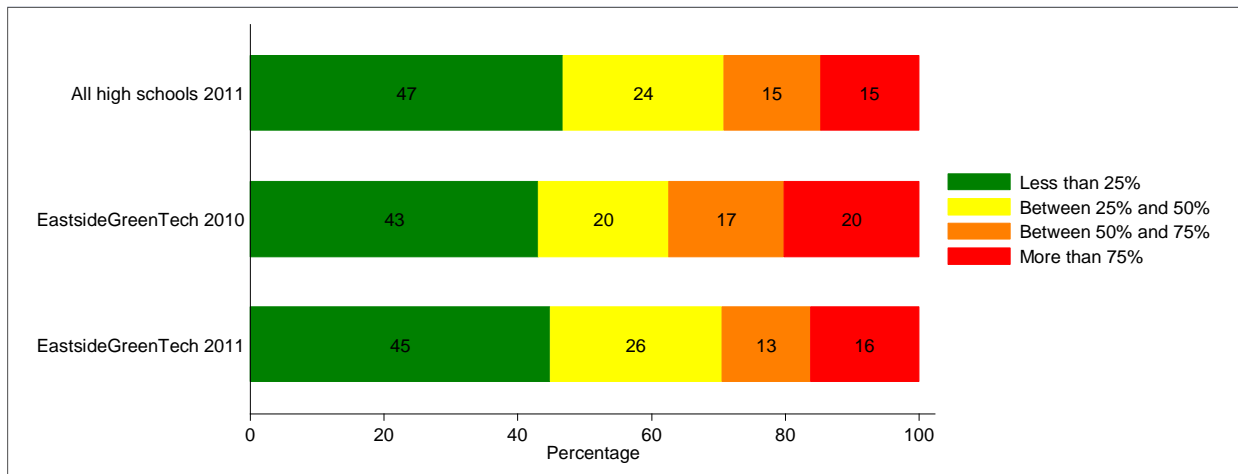
Q18a: What is the most recent you have used Tobacco?



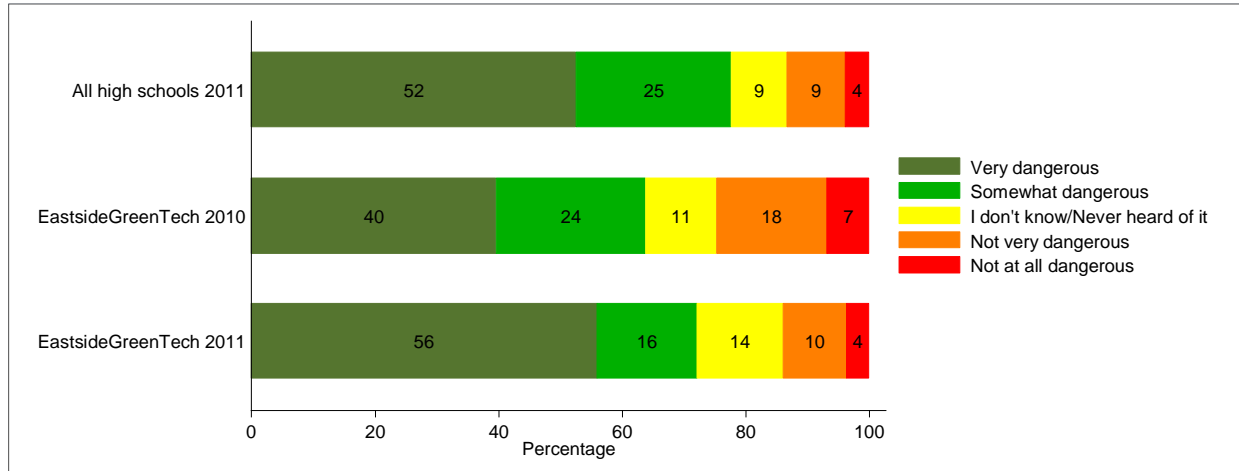
Q21a: During this year, how often did you use Tobacco?



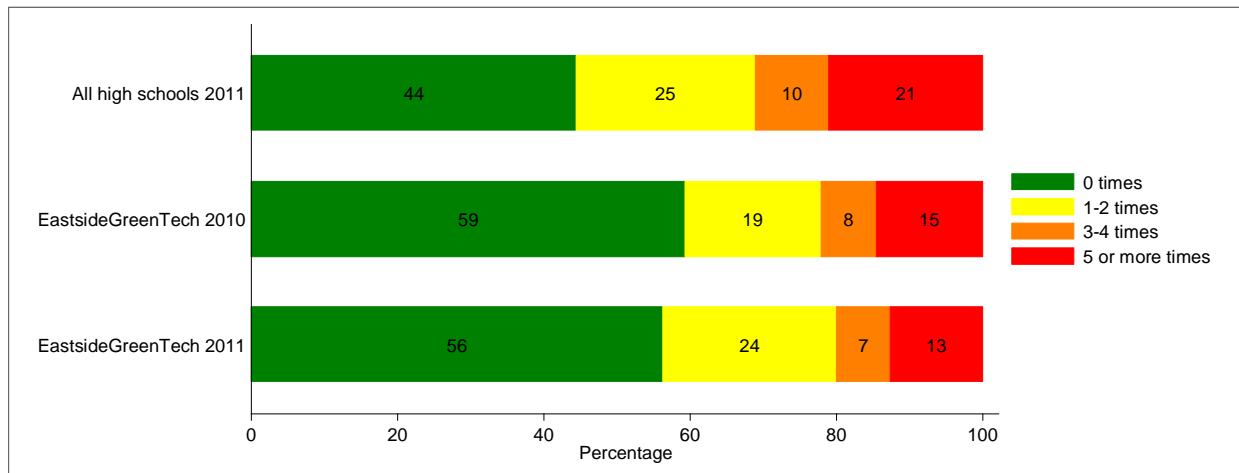
Q29a. Within the past month, how many kids at your school do you think have used tobacco?



Q27a: How dangerous is it for kids your age to use Tobacco?

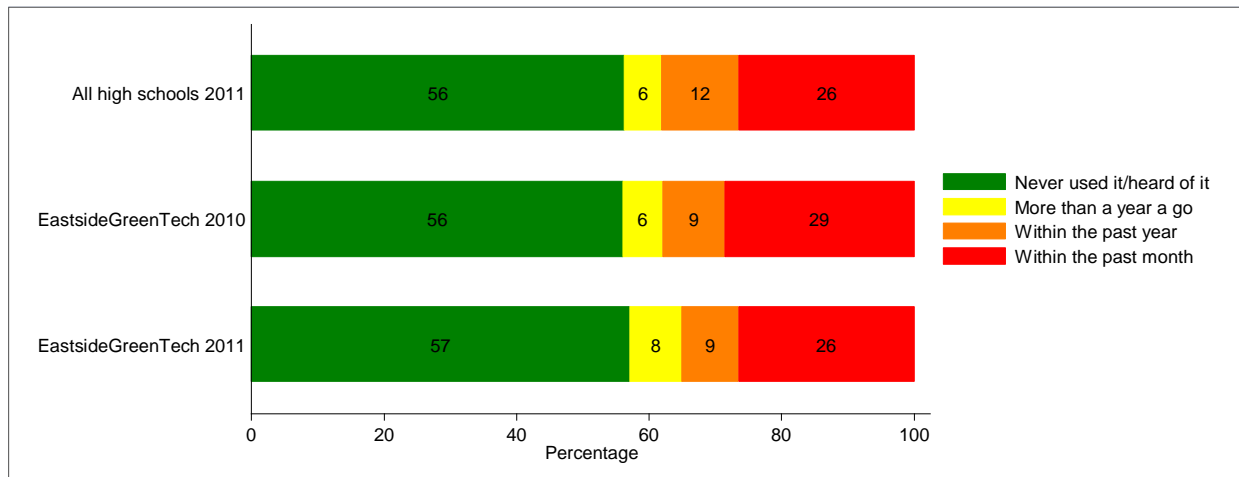


Q28g. During the school year, how many times have you experienced advertisements (TV, radio, billboard, magazine, internet, etc.) for tobacco products?

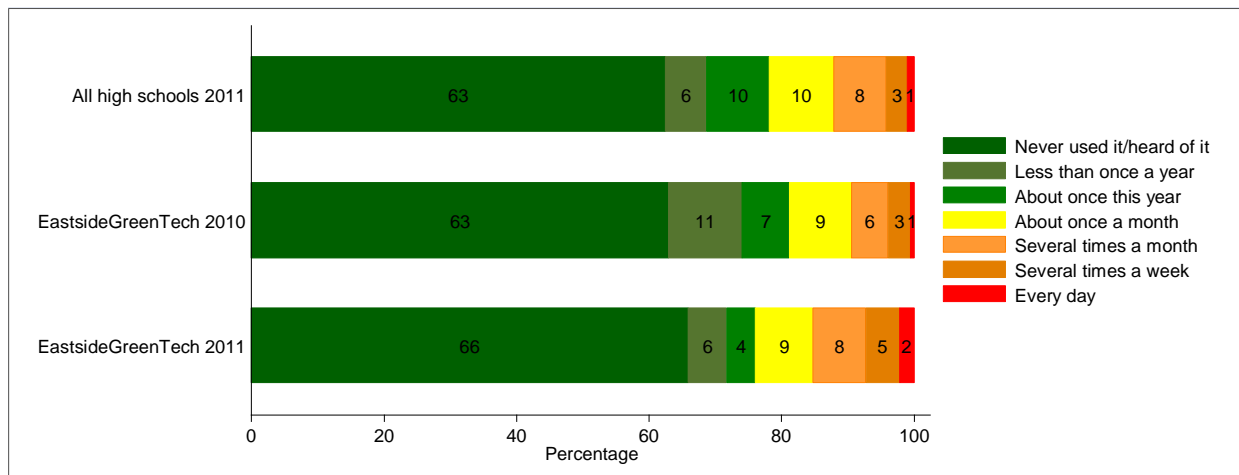


## ALCOHOL:

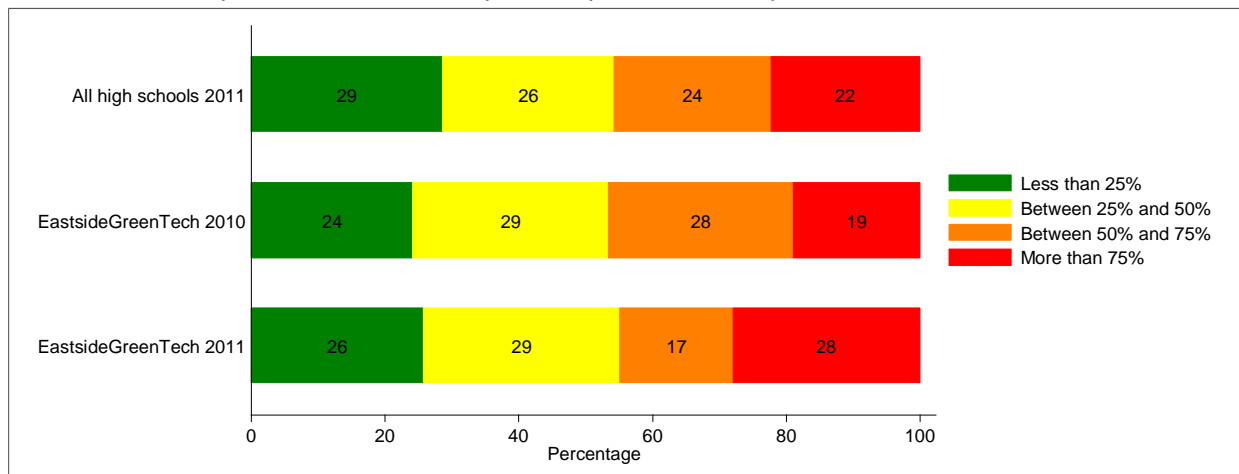
Q18b: What is the most recent you have used Alcohol?



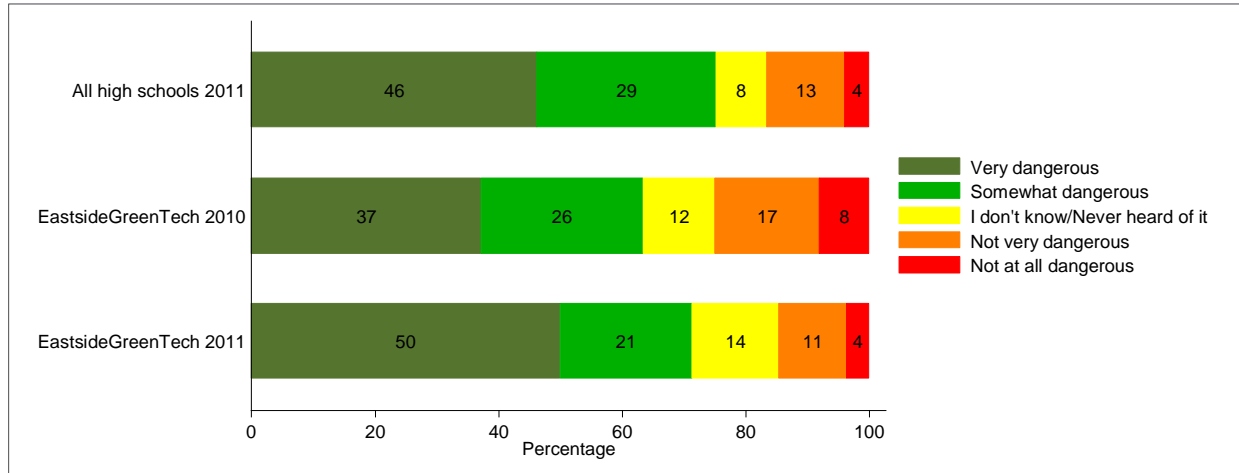
Q21b: During this year, how often did you use Alcohol?



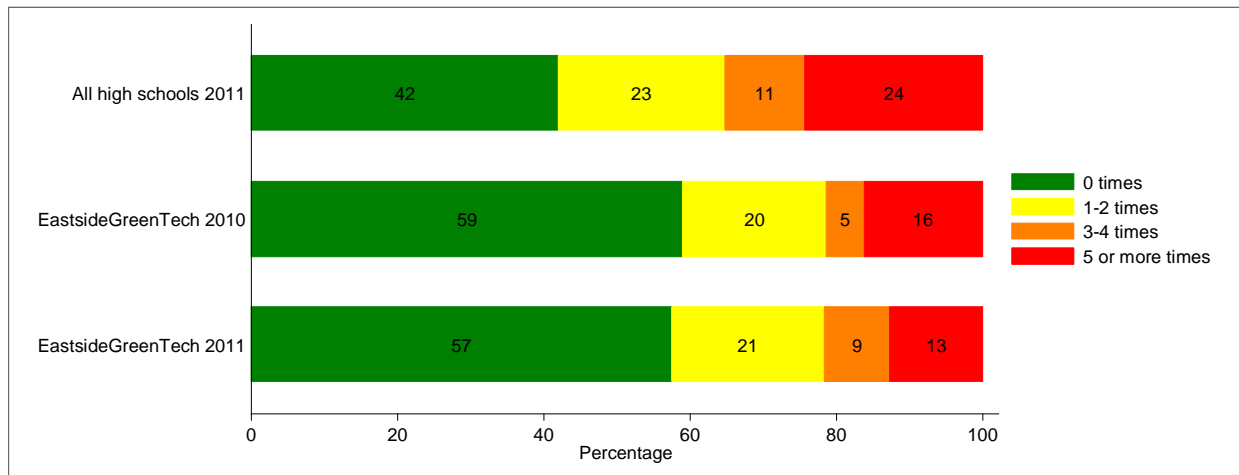
Q29b. Within the past month, how many kids at your school do you think have used alcohol?



Q27b: How dangerous is it for kids your age to use Alcohol?

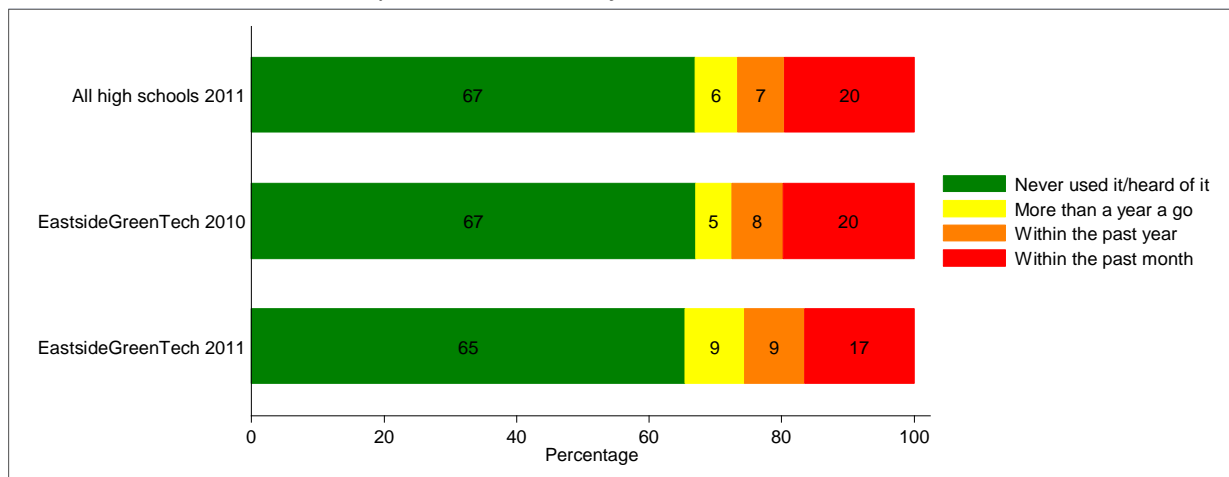


Q28f. During the school year, how many times have you experienced advertisements (TV, radio, billboard, magazine, internet, etc.) for alcohol products?

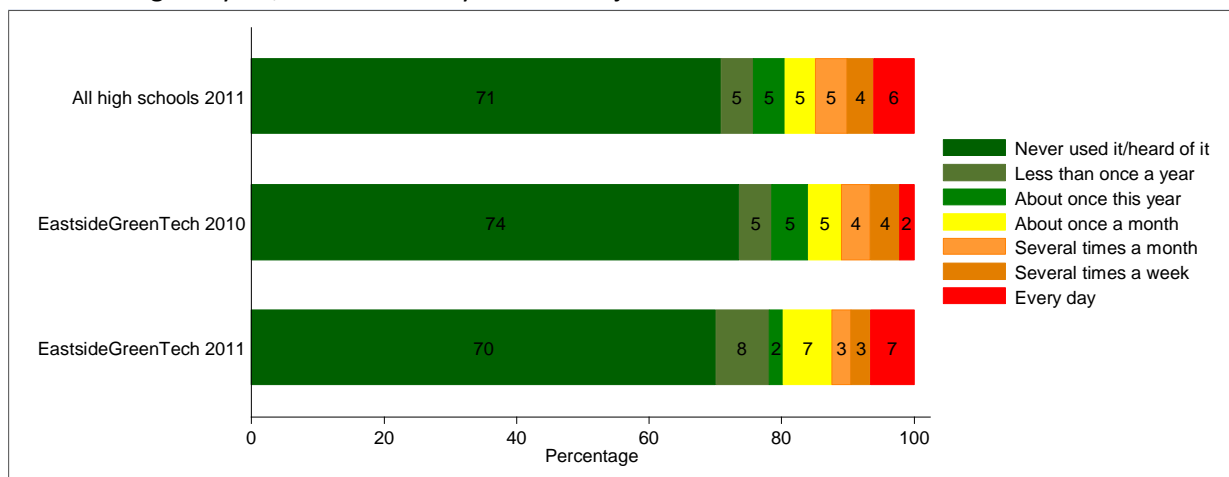


## MARIJUANA:

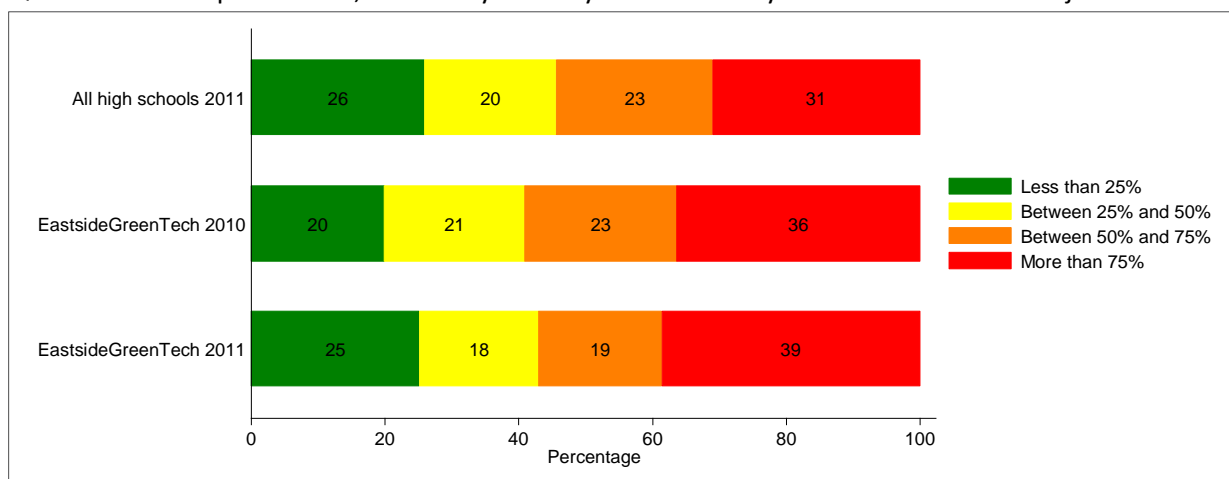
Q18c: What is the most recent you have used Marijuana?



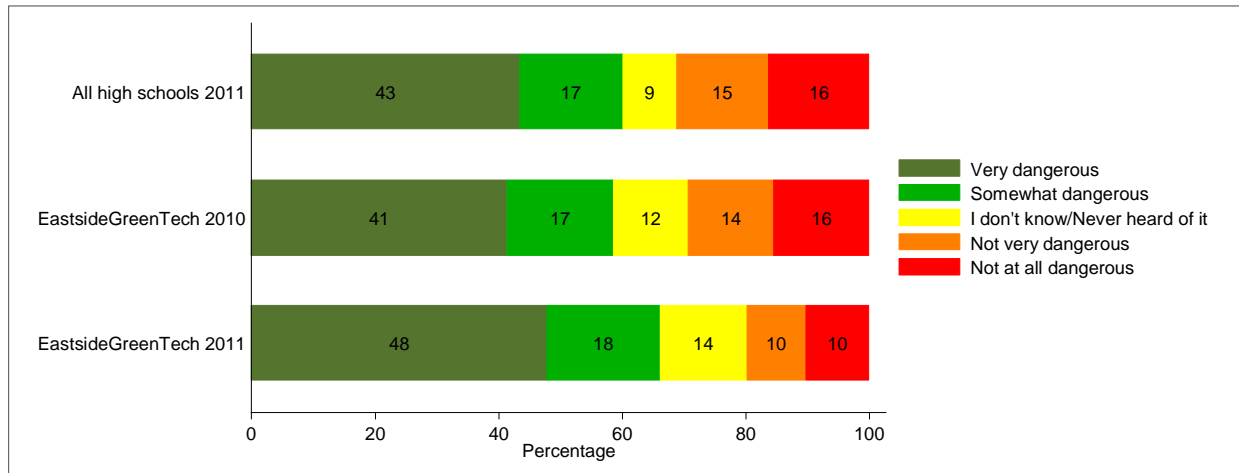
Q21c: During this year, how often did you use Marijuana?



Q29c. Within the past month, how many kids at your school do you think have used marijuana?



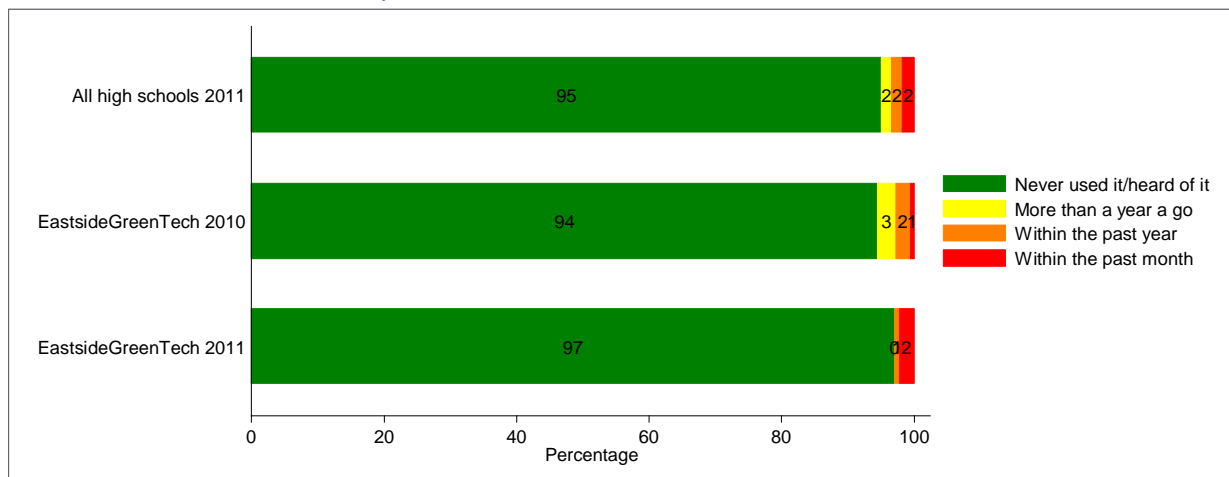
Q27c: How dangerous is it for kids your age to use Marijuana?



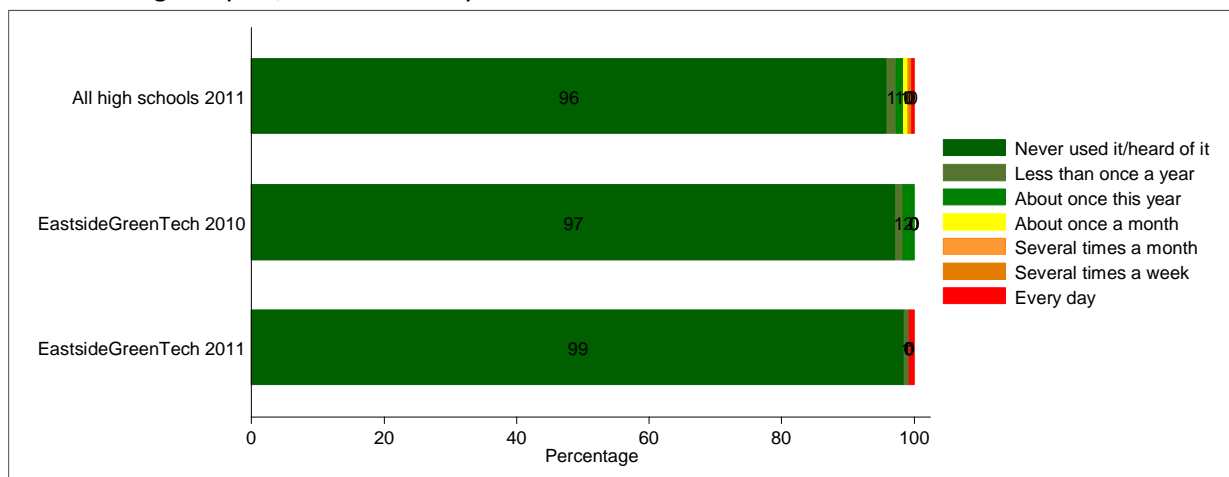


## INHALANTS:

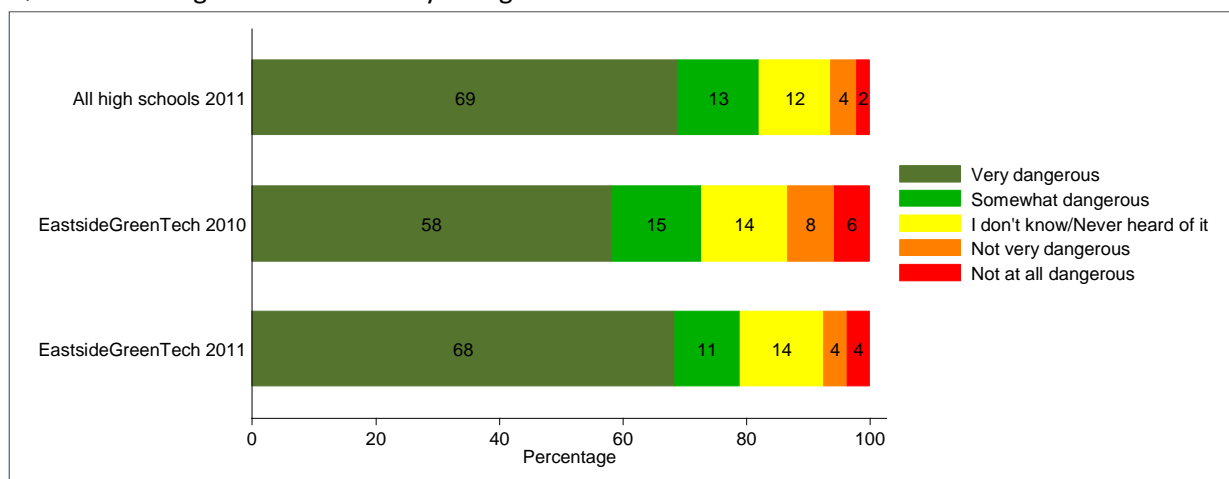
Q18d: What is the most recent you have used Inhalants?



Q21d: During this year, how often did you use Inhalants?

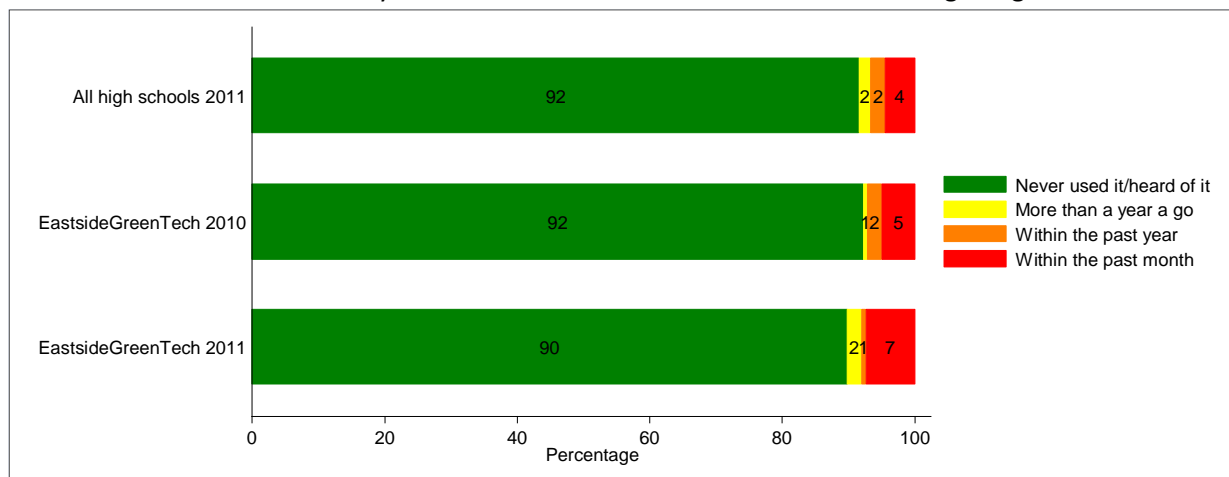


Q27d: How dangerous is it for kids your age to use Inhalants?

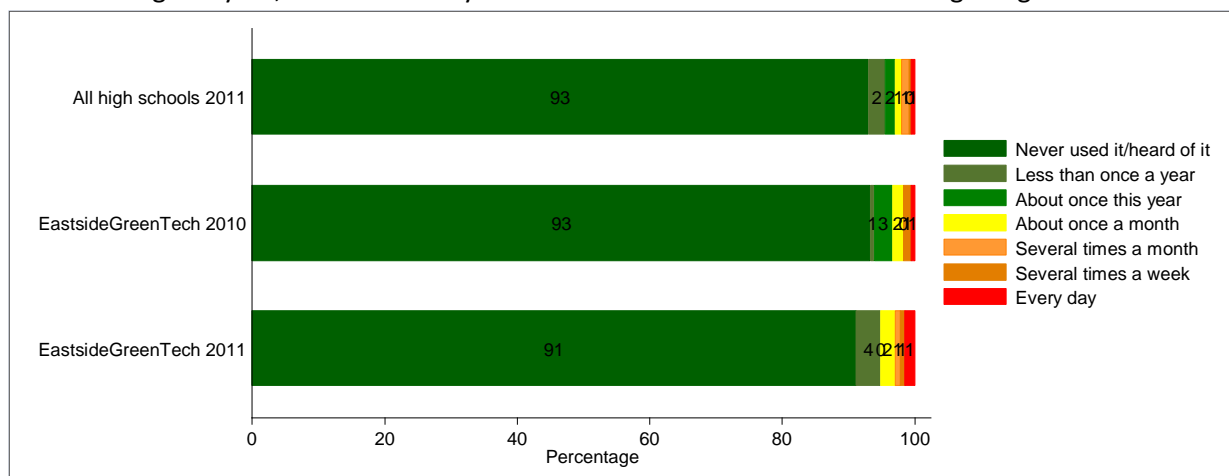


## OVER THE COUNTER MEDICATION:

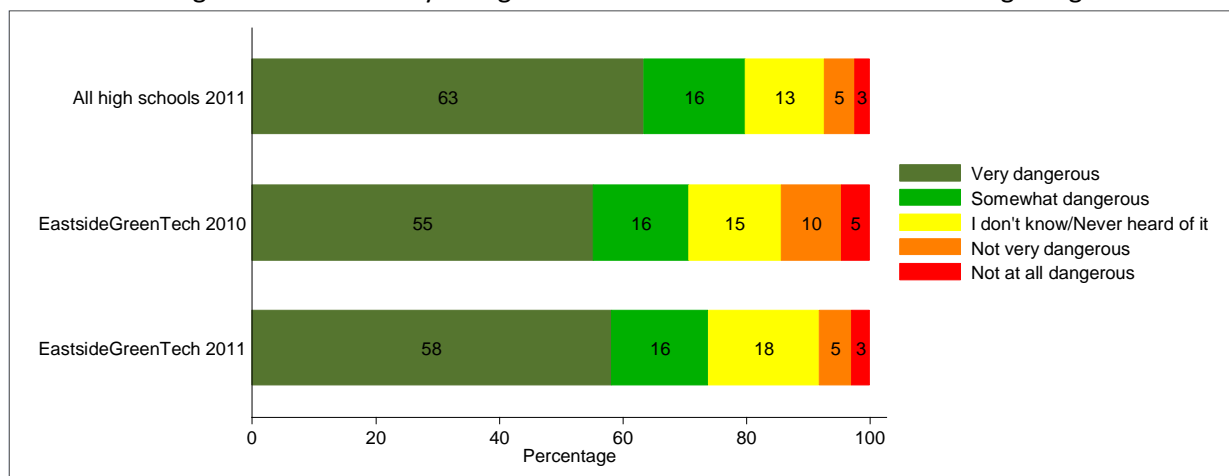
Q18e: What is the most recent you have used Over the Counter Medication to get high?



Q21e: During this year, how often did you use Over the Counter Medication to get high?

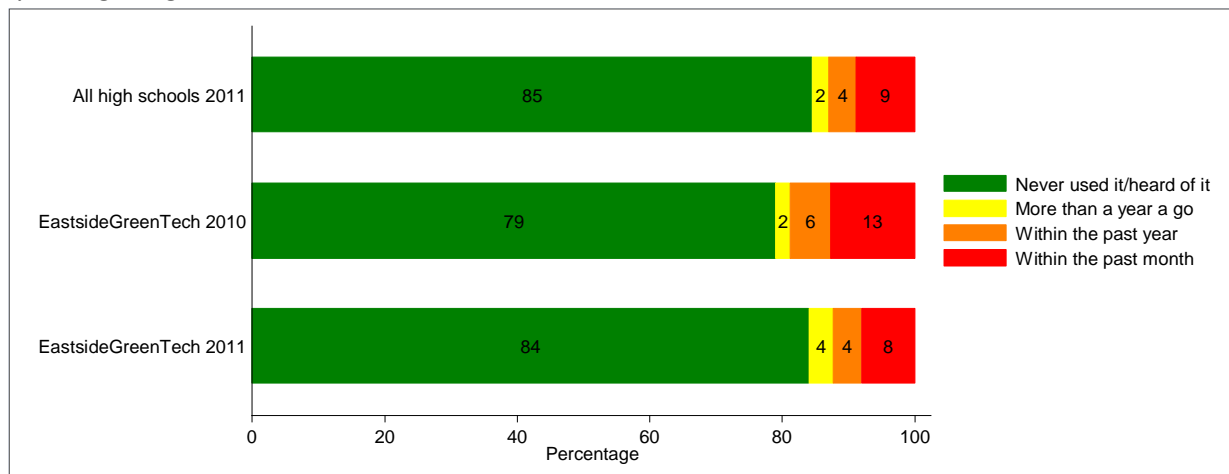


Q27e: How dangerous is it for kids your age to use Over the Counter Medication to get high?

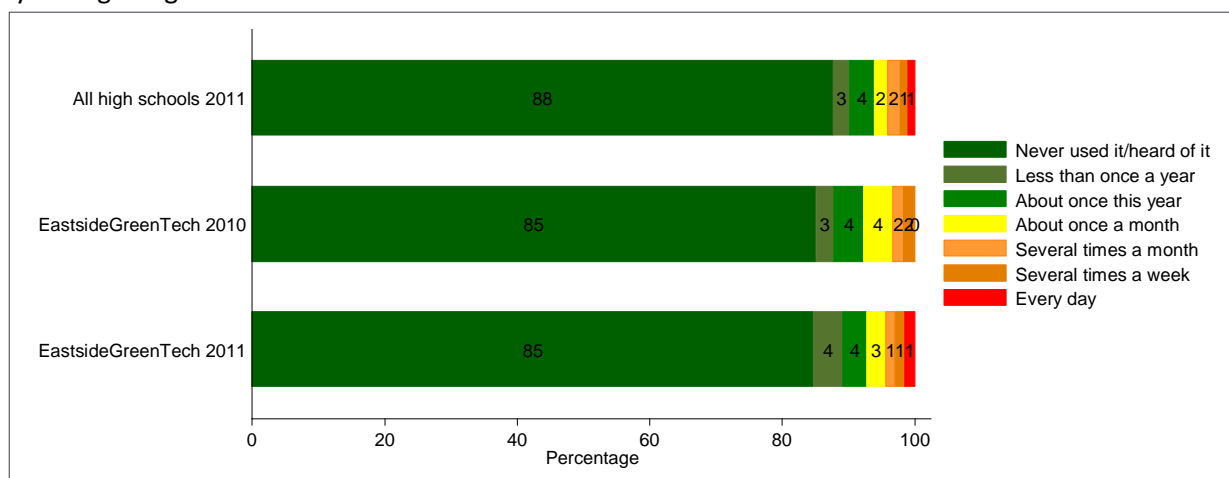


## PREScription DRUGS:

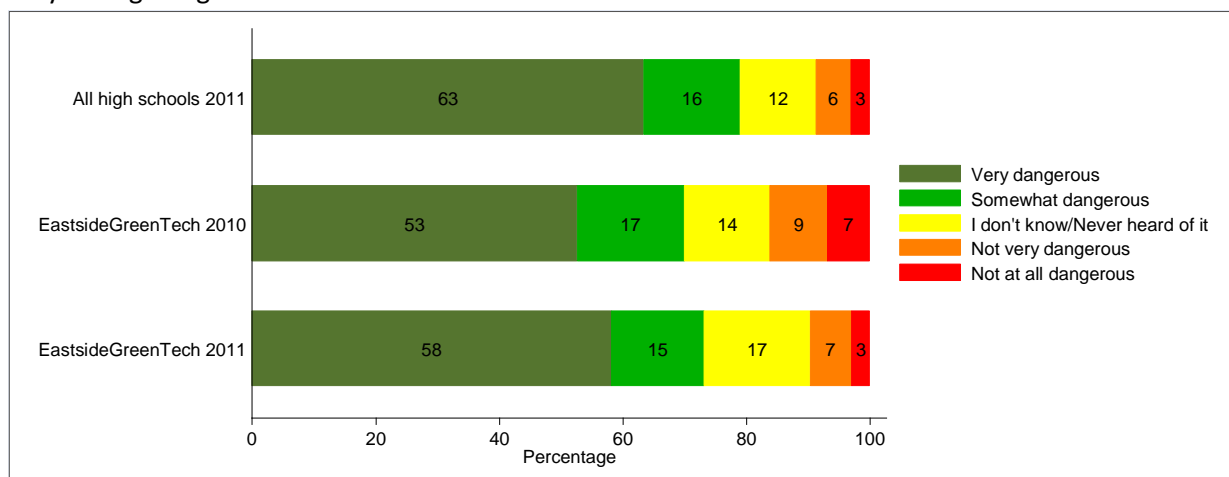
Q18f: What is the most recent you have used Prescription Drugs that were not prescribed to you to get high?



Q21f: During this year, how often did you use Prescription Drugs that were not prescribed to you to get high?

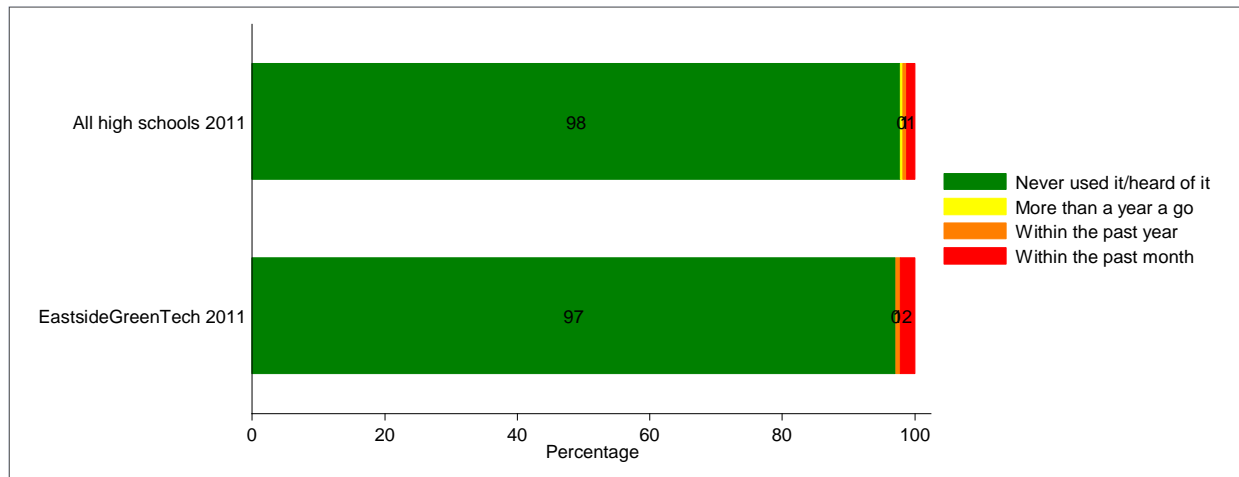


Q27f: How dangerous is it for kids your age to use Prescription Drugs that were not prescribed to you to get high?



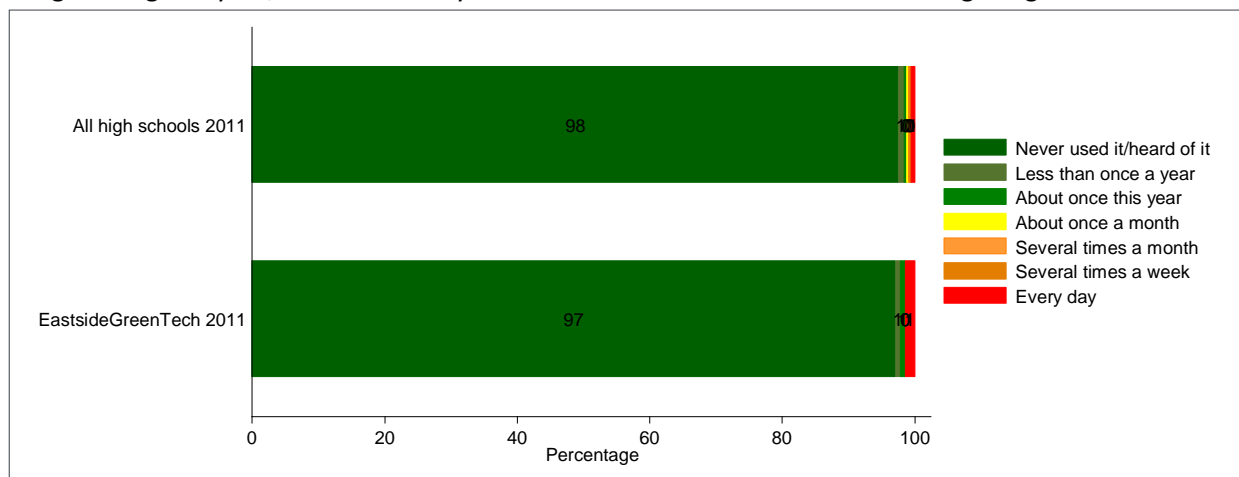
## STERIODS OR PERFORMANCE ENHANCING DRUGS:

Q18g: What is the most recent you have used Steroids or Performance Enhancing Drugs?



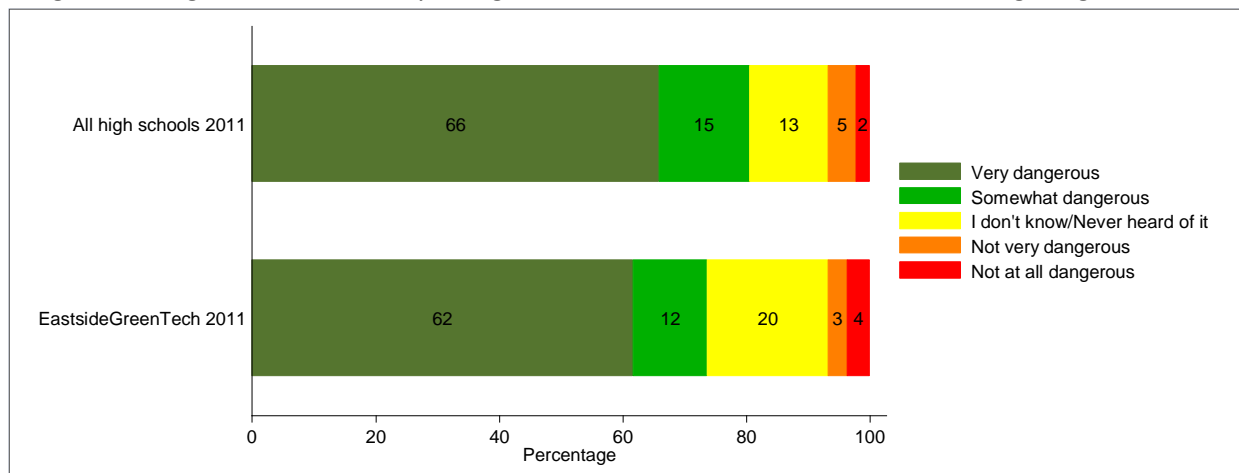
Note. This question was not reported for the 2009-2010 school year

Q21g: During this year, how often did you use Steroids or Performance Enhancing Drugs?



Note. This question was not reported for the 2009-2010 school year

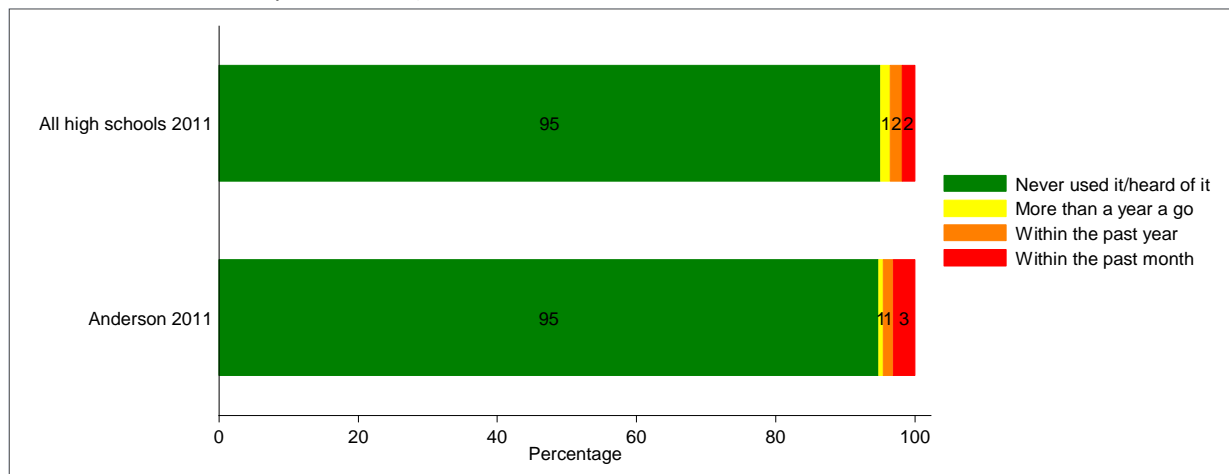
Q27g: How dangerous is it for kids your age to use Steroids or Performance Enhancing Drugs?



Note. This question was not reported for the 2009-2010 school year

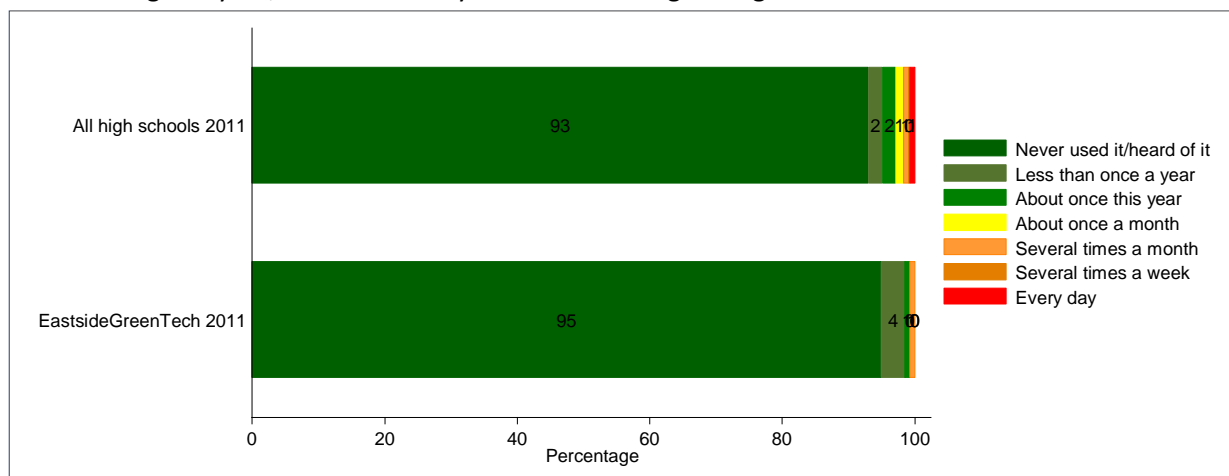
## OTHER ILLEGAL DRUGS:

Q18h: What is the most recent you have used Other Illegal Drugs (e.g., cocaine, ecstasy, hallucinogens, heroin, methamphetamines)?



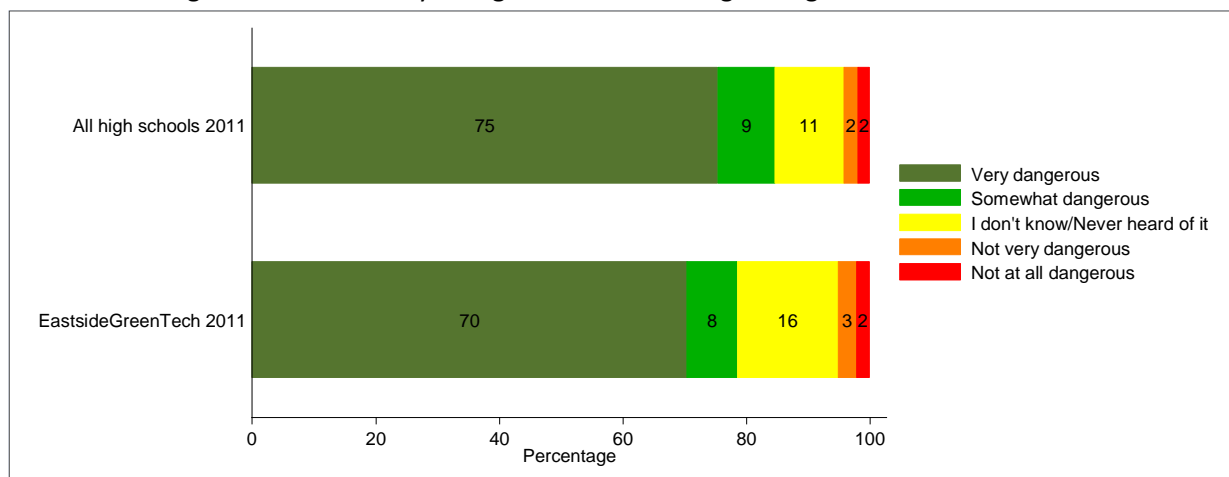
Note. This question was not reported for the 2009-2010 school year

Q21h: During this year, how often did you use Other Illegal Drugs?



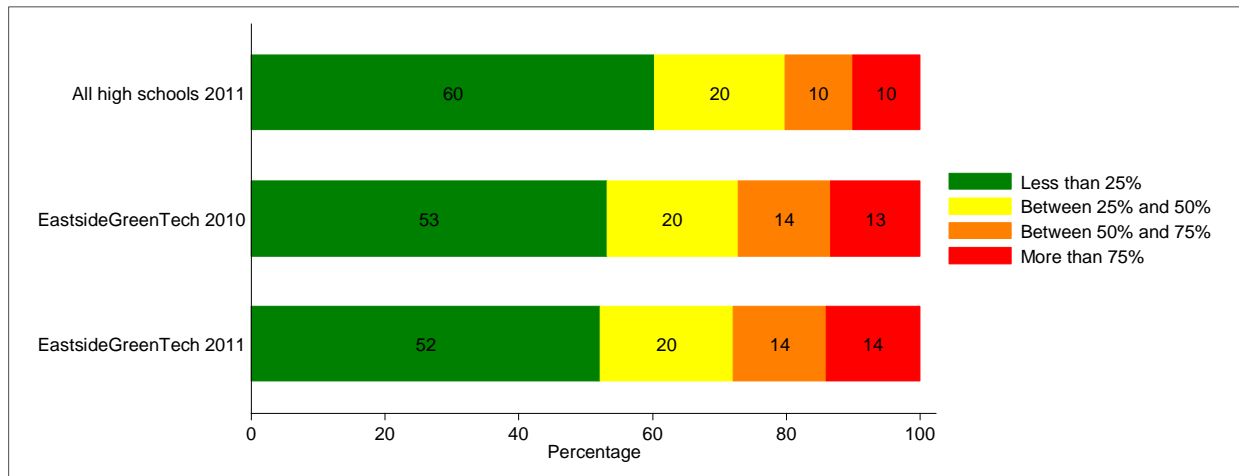
Note. This question was not reported for the 2009-2010 school year

Q27h: How dangerous is it for kids your age to use Other Illegal Drugs?



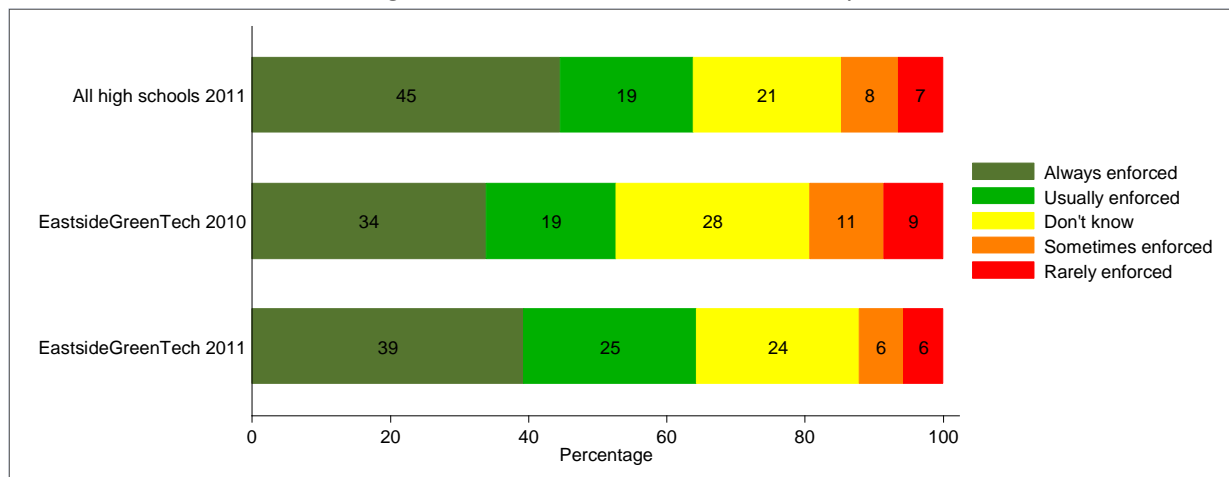
Note. This question was not reported for the 2009-2010 school year

Q29d. Within the past month, how many kids at your school do you think have used other illegal drugs (e.g., cocaine, ecstasy, heroin, etc.) ?

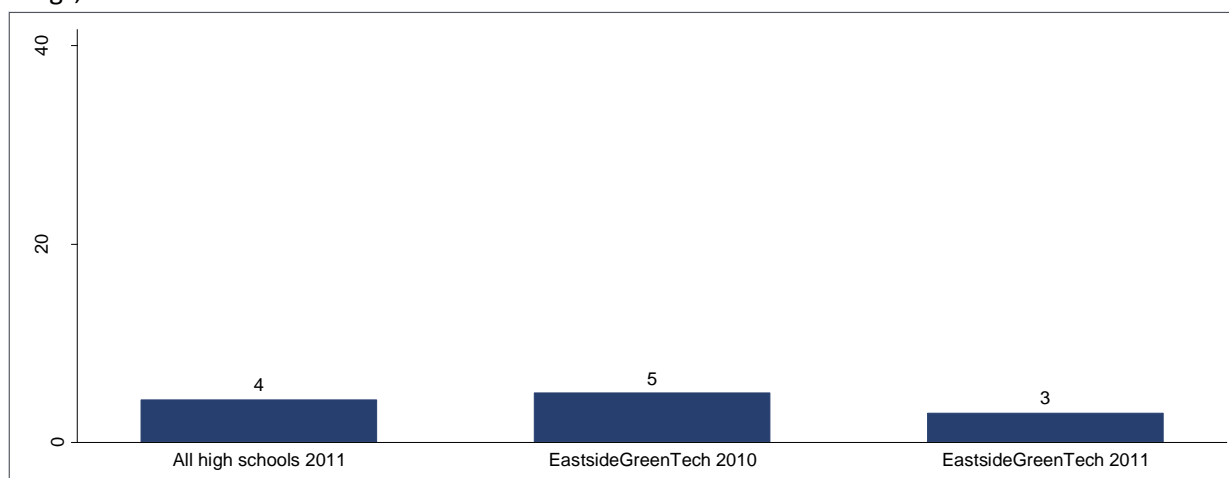


## OPINIONS, EXPERIENCE, AND EXPOSURE:

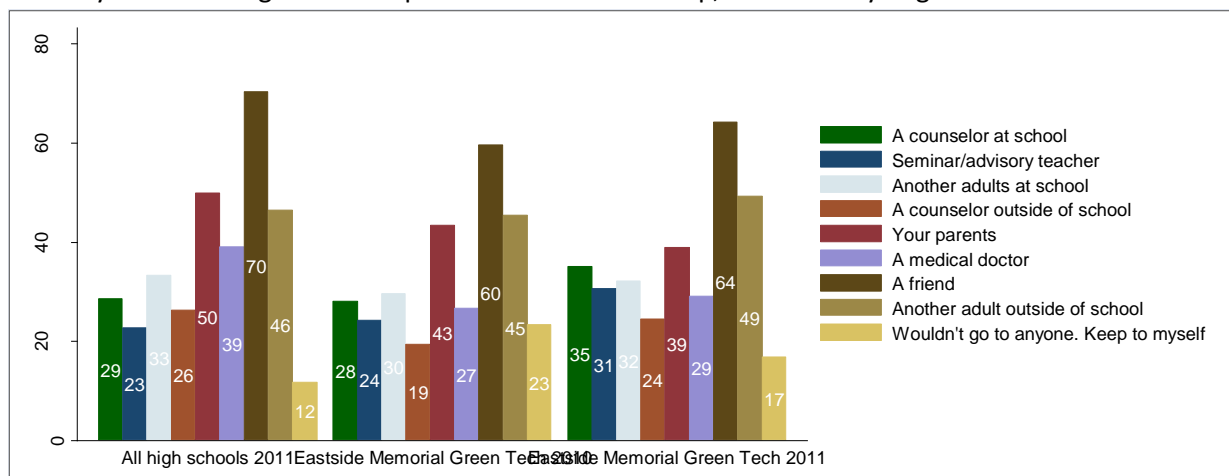
Q13: Are school rules about drug, alcohol, and tobacco use enforced by school staff?



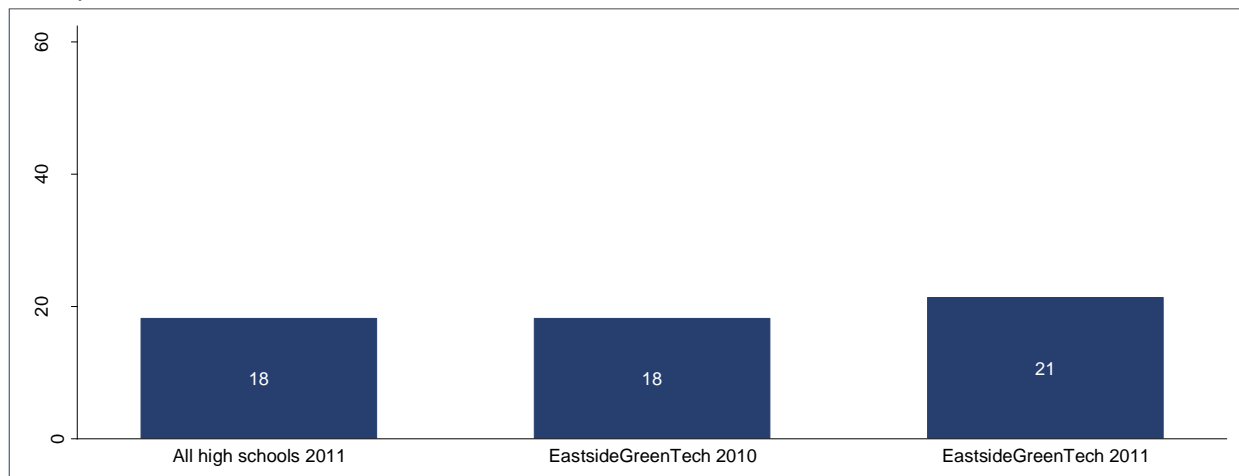
Q19: During this school year, have you gotten into trouble with the police because of tobacco, drugs, or alcohol?



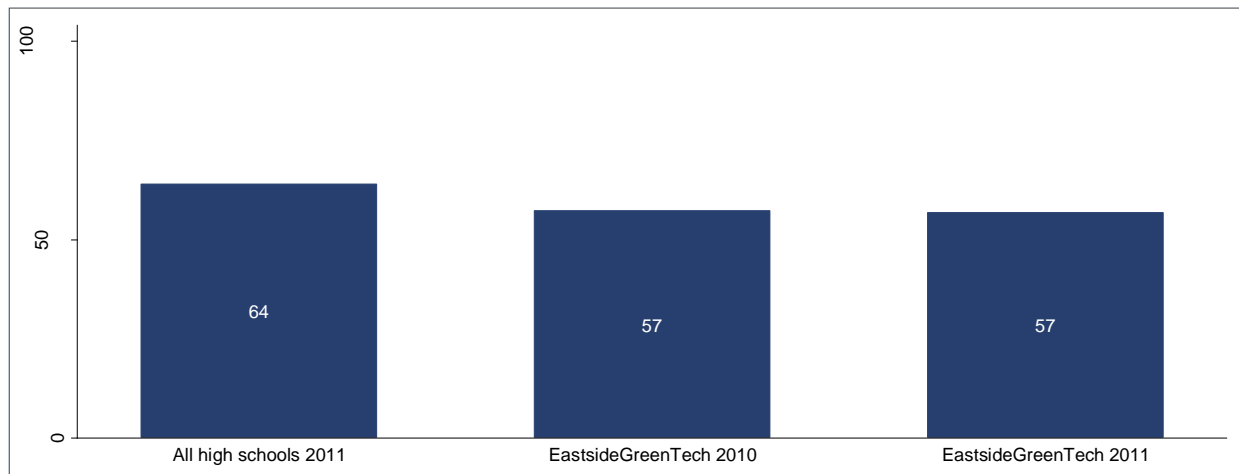
Q24: If you had a drug or alcohol problem and needed help, who would you go to?



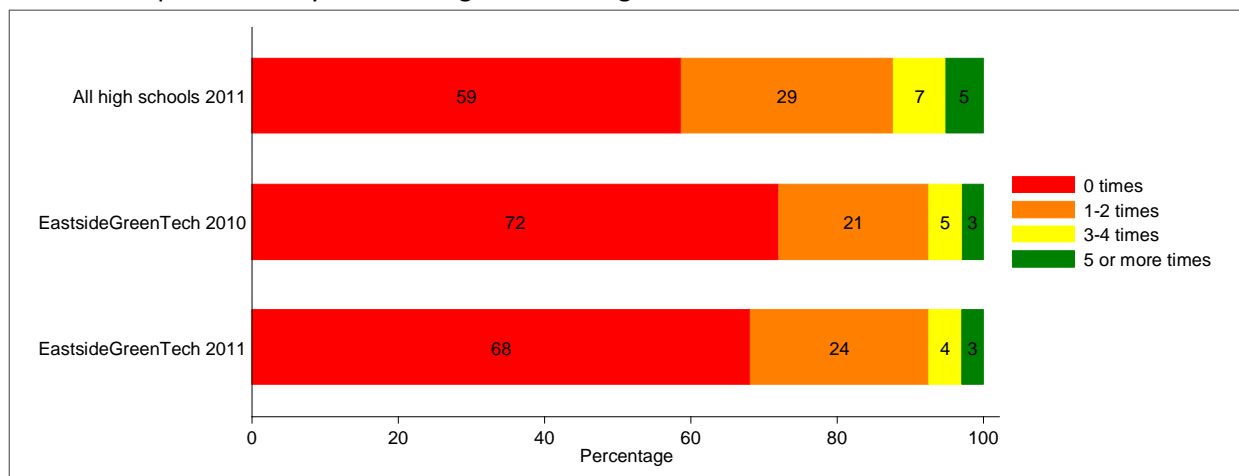
Q20: During this school year, have you attended any class while “high”, “stoned”, or “drunk” on any substance?



Q25: Within the past year, has your parent/guardian talked with you about the dangers of tobacco, alcohol, or drug use?

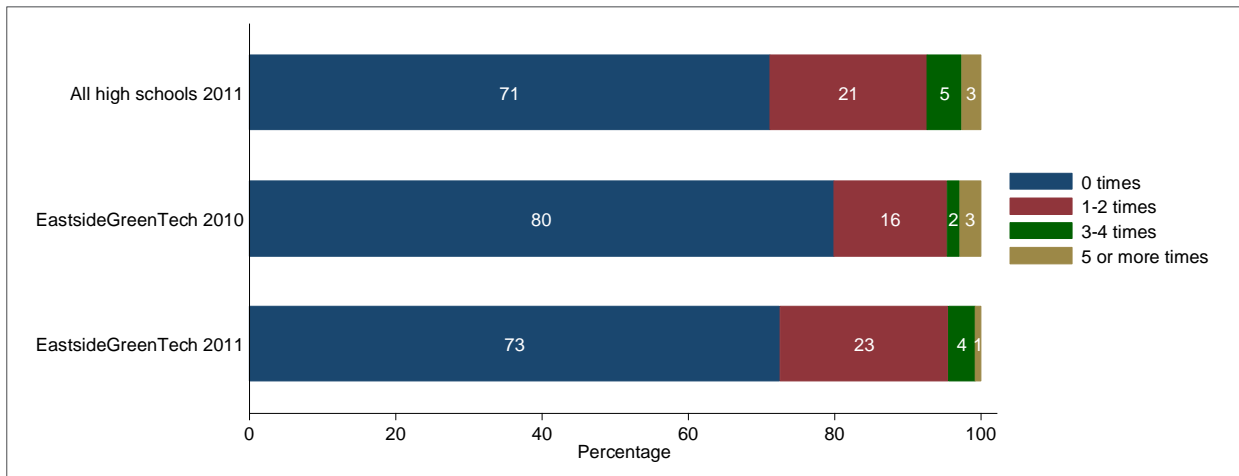


Q28a. During the school year, how many times have you experienced classes in which you learned and practiced ways of resisting and avoiding substance abuse?

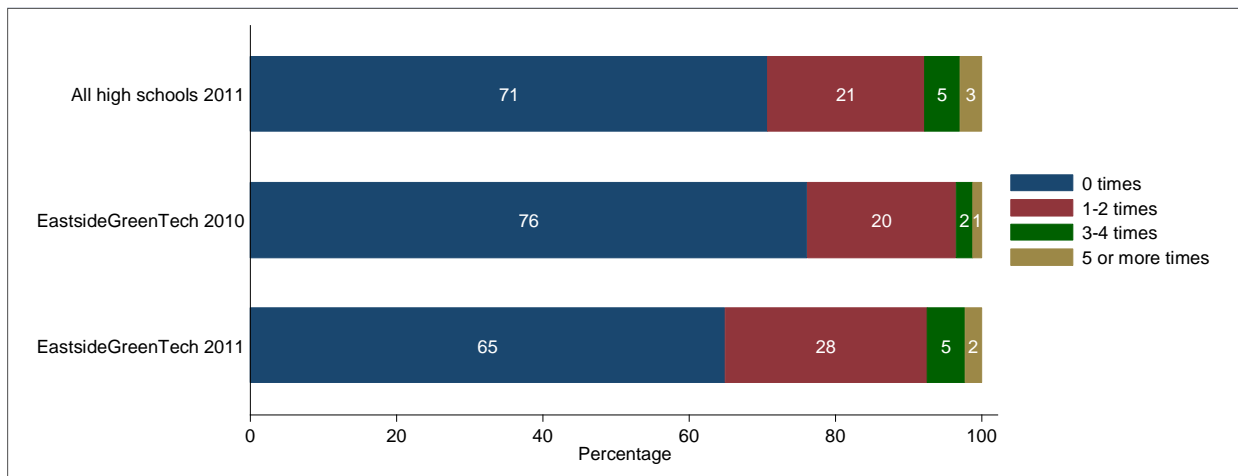




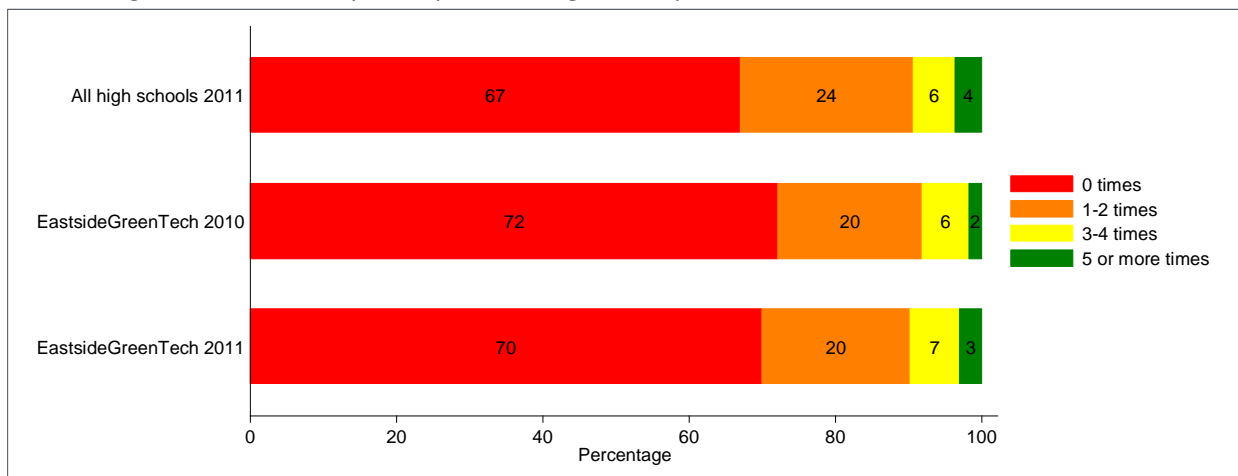
Q28b. During the school year, how many times have you experienced presentations by people who recovered from alcohol and drug abuse?



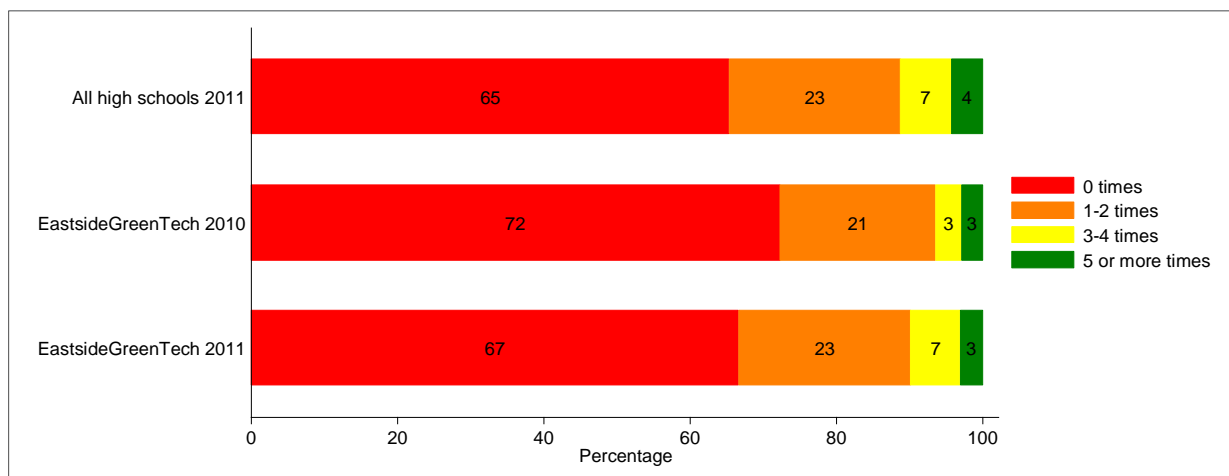
Q28c. During the school year, how many times have you experienced presentations by students who tell about how to avoid substance abuse?



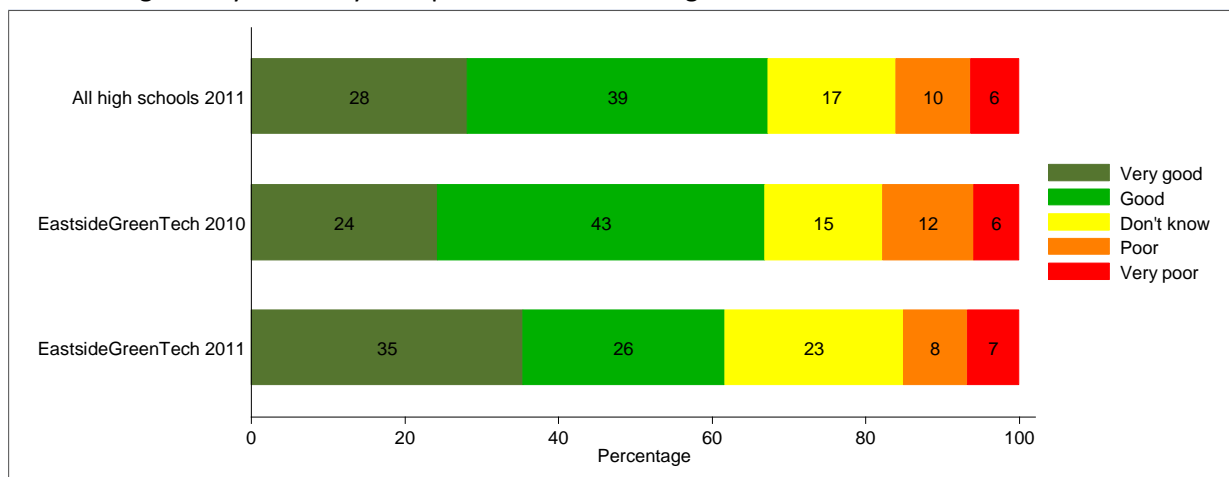
Q28d. During the school year, how many times have you received information about counseling or services to help kids quit smoking and stop substance abuse?



Q28e. During the school year, how many times have you experienced printed materials with cartoons and stories about how students avoid substance abuse?



Q30. How good is your ability to cope with stress and negative emotions?



**SUPERINTENDENT OF  
SCHOOLS**  
Meria J. Carstarphen Ed.D.

**OFFICE OF  
ACCOUNTABILITY**  
William H. Caritj, M.Ed.

**DEPARTMENT OF  
RESEARCH AND EVALUATION**  
Holly Williams, Ph.D.

**BOARD OF TRUSTEES**

Mark Williams, President • Vincent Torres, M.S., Vice President  
Lori Moya, Secretary • Cheryl Bradley • Annette LoVoi, M.A. • Christine Brister •  
Robert Schneider • Tamala Barksdale • Sam Guzman

