

AISD REACH Campus Report

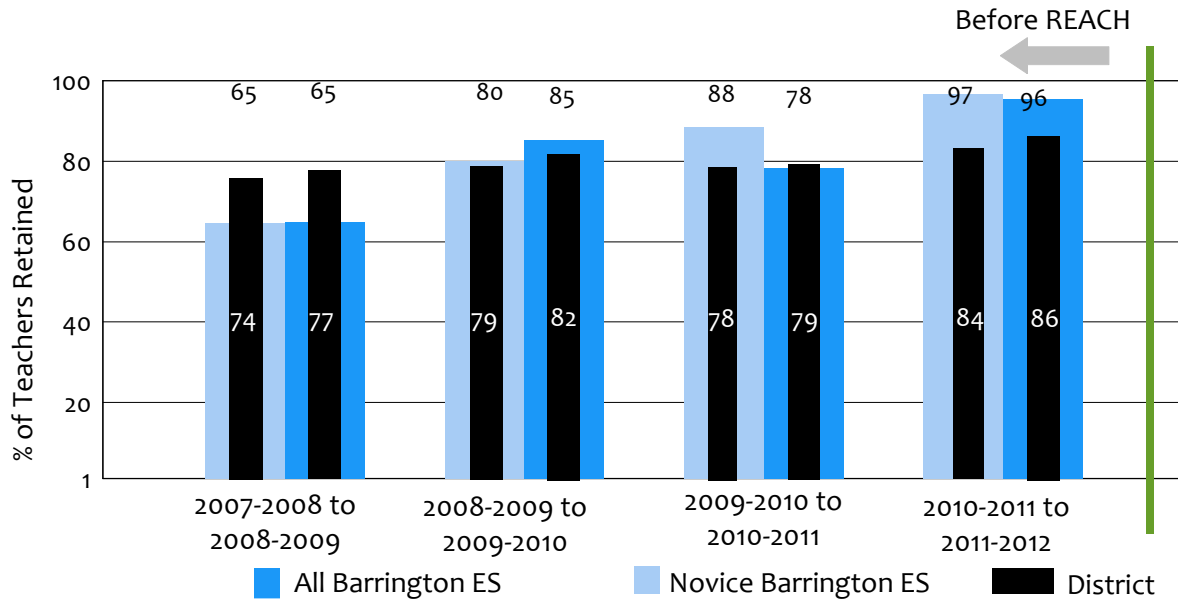
Barrington ES

Table 1. Average Stipend Award per Eligible REACH Teacher in 2008-2009 Through 2011-2012

	Number of eligible teachers	Average earned	Maximum earned	Maximum possible
2008-2009	n/a	n/a	n/a	n/a
2009-2010	n/a	n/a	n/a	n/a
2010-2011	n/a	n/a	n/a	n/a
2011-2012	78	\$4,917	\$7,000	\$11,500

As a REACH participant I have mostly benefitted from: "giving my students pre-tests. It sets you up for the entire year and you can really measure their growth."
[Barrington ES Teacher Focus Group, Spring 2012]

Figure 1. Percentage of All Barrington ES Teachers and Novice Teachers Retained, 2007-2008 Through 2011-2012



Note. Teachers affected by the reduction in force (RIF) are excluded.

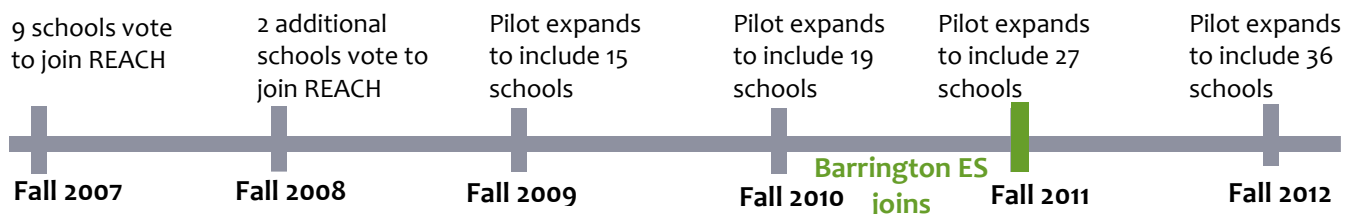


Table 4. Barrington ES Basket of Measures Objectives, 2010-2011 and 2011-2012

	TAKS/STAAR Objective	Met	College/Career Readiness	Met	Choice	Met	EVAAS Met
2010-2011	n/a		n/a		n/a		n/a
2011-2012	Maintain the percentage of All students meeting Math passing standard at 90%.	✗	Increase the number of English Language Learners making one year' growth on TELPAS by 3% points to 85%.	✗	Increase the number of K-2 gr students reaching satisfactory/college ready standard on DRA by 10 percentage points to 70%.	✗	✗

Table 2. Percentage of Barrington ES Teachers who Met Individual and Team SLOs

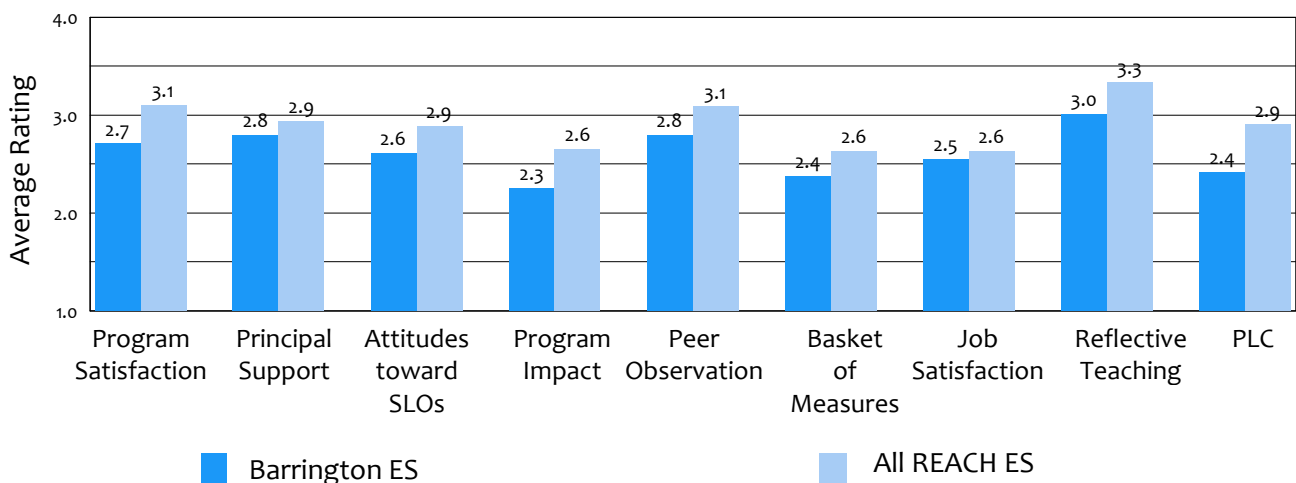
	Met 1 or 2 individual SLOs	Met team SLO
2010-2011	n/a	n/a
2011-2012	84%	68%

Note. Starting 2010-2011 teachers completed either two individual SLOs or a combination of individual and team SLOs.

Table 3. Percentage of Barrington ES Teachers who Met SLOs

	Met 0 SLOs	Met 1 SLOs	Met 2 SLOs
2007-2008	n/a	n/a	n/a
2008-2009	n/a	n/a	n/a
2009-2010	n/a	n/a	n/a
2010-2011	n/a	n/a	n/a
2011-2012	8%	31%	61%

Figure 2. Barrington ES Ratings on REACH Subscales in the 2011-2012 Coordinated Survey



Note. Higher scores represent more positive ratings.