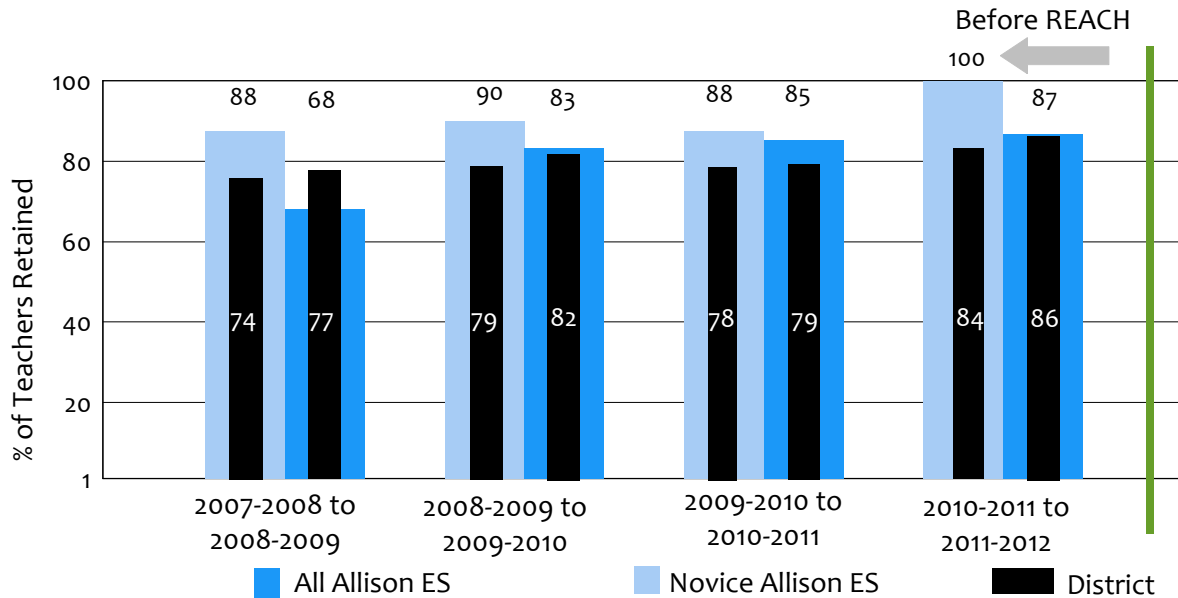


Table 1. Average Stipend Award per Eligible REACH Teacher in 2008-2009 Through 2011-2012

	Number of eligible teachers	Average earned	Maximum earned	Maximum possible
2008-2009	n/a	n/a	n/a	n/a
2009-2010	n/a	n/a	n/a	n/a
2010-2011	n/a	n/a	n/a	n/a
2011-2012	42	\$6,226	\$8,500	\$11,500

As a REACH participant I have mostly benefitted from: "the money. It is always nice."
[Allison ES Teacher Focus Group, Spring 2012]

Figure 1. Percentage of All Allison ES Teachers and Novice Teachers Retained, 2007-2008 Through 2011-2012



Note. Teachers affected by the reduction in force (RIF) are excluded.

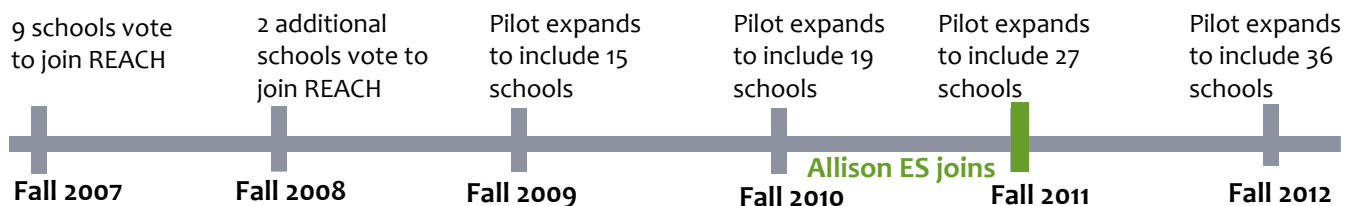


Table 4. Allison ES Basket of Measures Objectives, 2010-2011 and 2011-2012

	TAKS/STAAR Objective	Met	College/Career Readiness	Met	Choice	Met	EVAAS Met
2010-2011	n/a		n/a		n/a		n/a
2011-2012	Exceed the Math STAAR passing standard for 3rd-5th grade students by 5 percentage points.	✓	80% of all K-2nd grade students (English and Spanish) will perform at or above grade level in Reading.	✗	Increase attendance rate by .5 percentage points to 95.7%.	✗	✗

Table 2. Percentage of Allison ES Teachers who Met Individual and Team SLOs

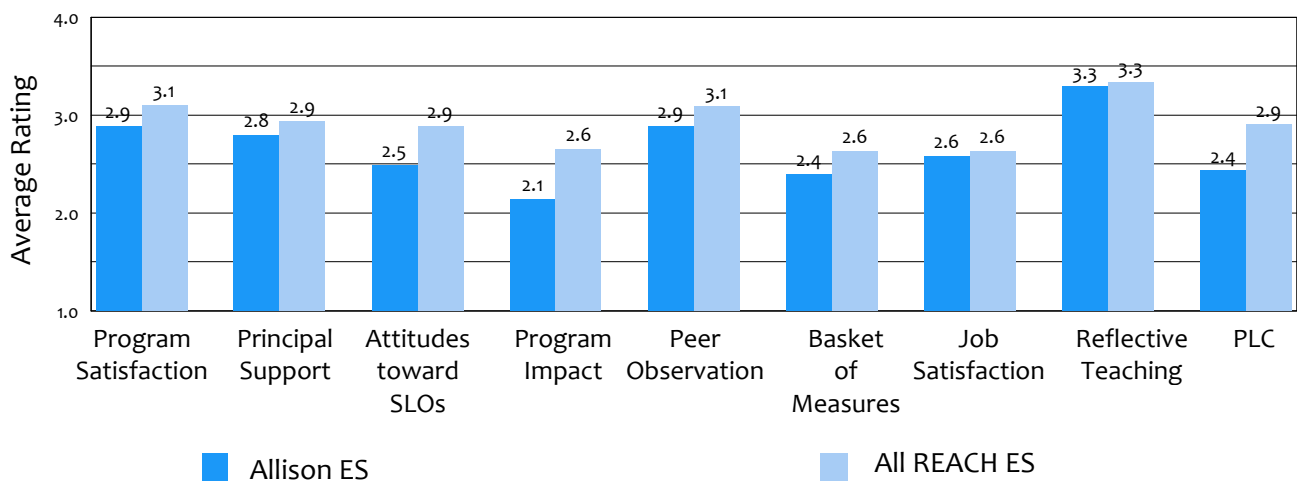
	Met 1 or 2 individual SLOs	Met team SLO
2010-2011	n/a	n/a
2011-2012	92%	81%

Note. Starting 2010-2011 teachers completed either two individual SLOs or a combination of individual and team SLOs.

Table 3. Percentage of Allison ES Teachers who Met SLOs

	Met 0 SLOs	Met 1 SLOs	Met 2 SLOs
2007-2008	n/a	n/a	n/a
2008-2009	n/a	n/a	n/a
2009-2010	n/a	n/a	n/a
2010-2011	n/a	n/a	n/a
2011-2012	3%	19%	78%

Figure 2. Allison ES Ratings on REACH Subscales in the 2011-2012 Coordinated Survey



Note. Higher scores represent more positive ratings.