



# Austin Independent School District

## Department of Program Evaluation

Publication Number 08.67  
October 2009

Reetu Naik, M.A.  
Cinda Christian, Ph.D.  
Marshall W. Garland, M.A.

## RESULTS OF THE 2009 STUDENT SUBSTANCE USE AND SAFETY SURVEY AKINS HIGH SCHOOL

### Description of Survey

The federal Title IV Safe and Drug Free Schools and Communities grant requires annual needs assessment and evaluation of substance use and safety issues. Consequently, each year a self-report student survey of substance use and school safety is administered to a random, representative sample of AISD students. The survey is used to track student knowledge, attitudes, and self-reported behavior over time. In the Spring of 2009 a sample of 8,320 students in grades 6-12 submitted valid responses to the district's annual survey of substance use and safety issues, yielding a response rate of 72%.<sup>1</sup> Selected item results are attached. These results should be shared with the campus Positive Behavior Support (PBS) team, Campus Advisory Council, and others involved in campus safety planning efforts for your school.

### How should sample data be interpreted?

When it is not feasible to survey an entire population, samples are used instead. However, when a sample is used to make inferences about a population the results must be interpreted with caution. For example, although 87% of a sample may select a particular survey response, this does not necessarily mean 87% of the entire population feels the same way. To interpret the sample data cautiously, we have used the following information to construct an interval that describes the range within which the result for your campus population is likely to fall:

- Population size: In this case, the number of students at your campus.
- Sample size: In this case, the number of survey respondents from your campus.
- Desired level of confidence: In this case, 95%.

The 95% confidence interval is commonly used, indicating that you can be 95% confident that the true population result will fall within the constructed interval.

### How should Confidence Intervals be used to interpret your campus data?

*Based on the Akins HS sample of 282 students and population enrollment of 2871, the confidence interval for Akins HS is + and -5.5%.*

To make inferences about your campus population using the sample data, the results should be interpreted with the computed confidence interval of 5% on each side of the sample statistics. For example, 37% of respondents from your campus indicated that their friends belonged to gangs (see Q16, p.9). Applying the confidence interval (i.e., adding and subtracting 5.5%) to the 37% yields a range of 31.5% - 42.5%. Therefore, you can be 95% confident that somewhere between 31.5% - 42.5% of all students at your campus would indicate that their friends belonged to a gang. When making comparisons between item results from year to year, please remember that small changes may have occurred by chance alone. The confidence interval for 2008 was 6%. Therefore, only differences of 11.5% or greater (6%+5.5%) should be considered statistically significant when comparing the results from two different years.

---

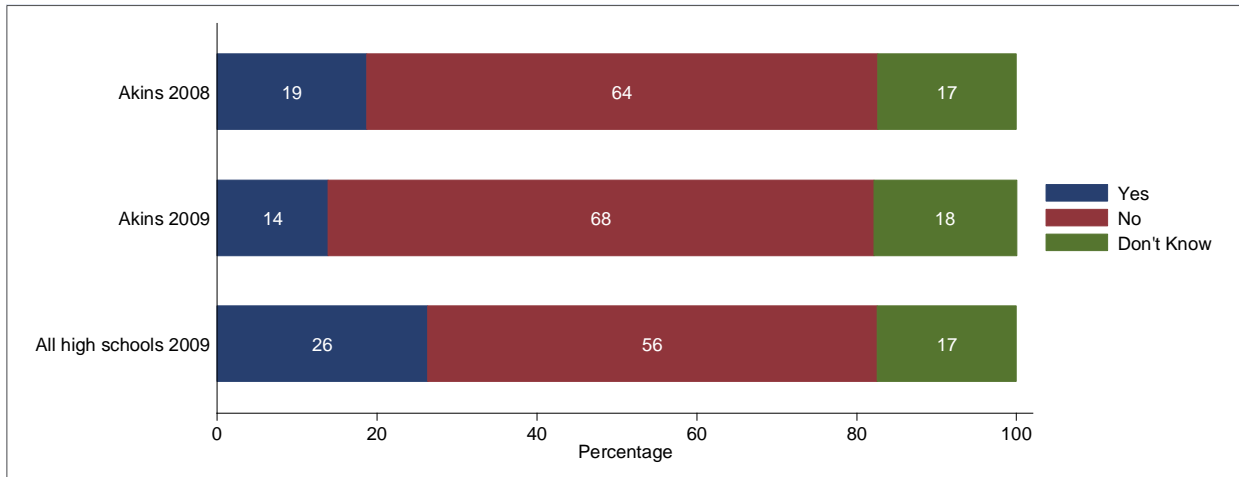
<sup>1</sup> A total of 8,783 surveys were returned to the Department of Program Evaluation from an original sample of 11,628 students. Of those returned, 463 surveys were removed from analysis due to invalid responses.

## RESPONDENT DEMOGRAPHICS AND ITEMS THAT ADDRESS BOTH SUBSTANCE USE AND SAFETY

### Demographics

	Gender		Grade				Total
	Male	Female	9th	10th	11th	12th	
<b>Akins 2008</b>	115 51%	109 49%	89 40%	47 21%	32 14%	56 25%	224
<b>Akins 2009</b>	137 49%	143 51%	80 29%	85 31%	63 23%	50 18%	282
<b>All high schools 2009</b>	1,604 47%	1,812 53%	931 29%	791 24%	813 25%	720 22%	3,453

Q22: Do one or both of your parents usually attend school sponsored open houses, PTA meetings or other school events?



Q26: Of the following, which do you consider to be the most serious problem on your campus?

	Akins 2009	Percentage point change from 2008	All high schools 2009
<b>Marijuana use</b>	27%	4	31%
<b>Alcohol use</b>	2%	-2	7%
<b>Student fighting and physical aggression</b>	25%	-3	14%
<b>Student harassment, threats, and intimidation</b>	9%	3	6%
<b>Student vandalism, criminal mischief</b>	5%	2	4%
<b>Prescription drug use</b>	4%	-1	4%
<b>Tobacco use</b>	2%	0	3%
<b>Violence or threats toward staff</b>	2%	0	2%
<b>Student weapon possession</b>	0%	-6	4%
<b>None of these are serious problems on my campus</b>	23%	4	27%

Q7. During this school year, have you received any information on drugs, alcohol, or violence from any of the following school sources?

	Akins 2009	Percentage point change from 2008	All high schools 2009
<b>Another class</b>	38%	-6	35%
<b>Health class</b>	58%	8	40%
<b>Advisory/seminar class</b>	28%	-22	49%
<b>Science class</b>	27%	1	29%
<b>Special school event about tobacco, drugs, alcohol, or violence</b>	32%	-1	13%
<b>Guidance counselor</b>	12%	-1	12%
<b>Student support group meetings at school</b>	15%	-1	13%
<b>Other school source not mentioned above</b>	20%	-3	19%
<b>None of the above</b>	17%	4	18%

Note. Percentages may sum to more than 100% because respondents were allowed to choose multiple items.

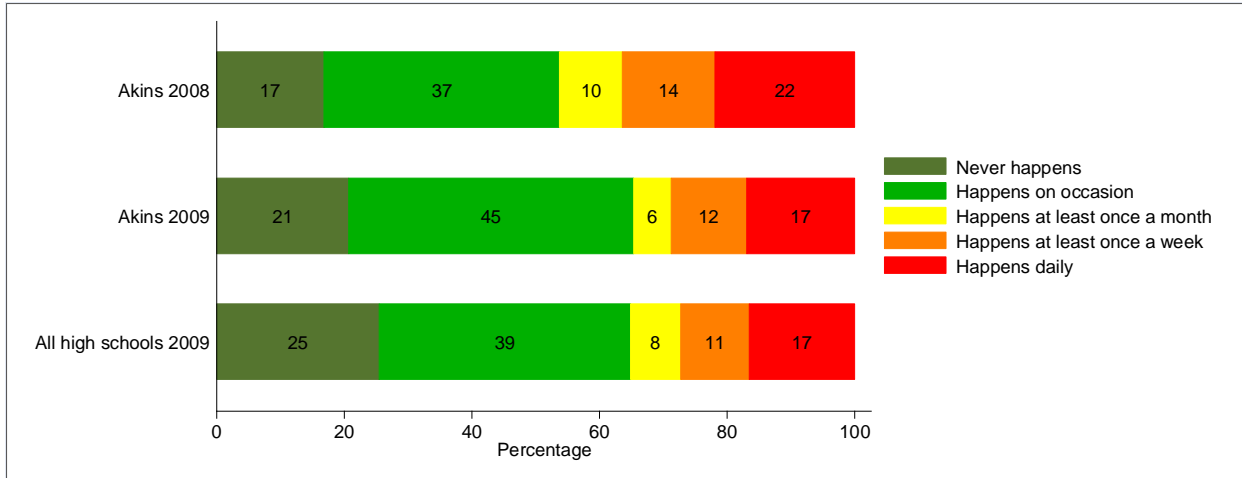
Q23: During this school year, have you brought any of the following items to school?

	Akins 2009	Percentage point change from 2008	All high schools 2009
<b>Illegal drugs</b>	13%	1	11%
<b>Tobacco</b>	11%	-1	9%
<b>Alcohol</b>	8%	2	6%
<b>Prescription drugs</b>	8%	2	7%
<b>Knives</b>	10%	6	8%
<b>Other weapons</b>	6%	3	6%
<b>Gun</b>	4%	3	3%
<b>None of the above</b>	75%	-1	79%

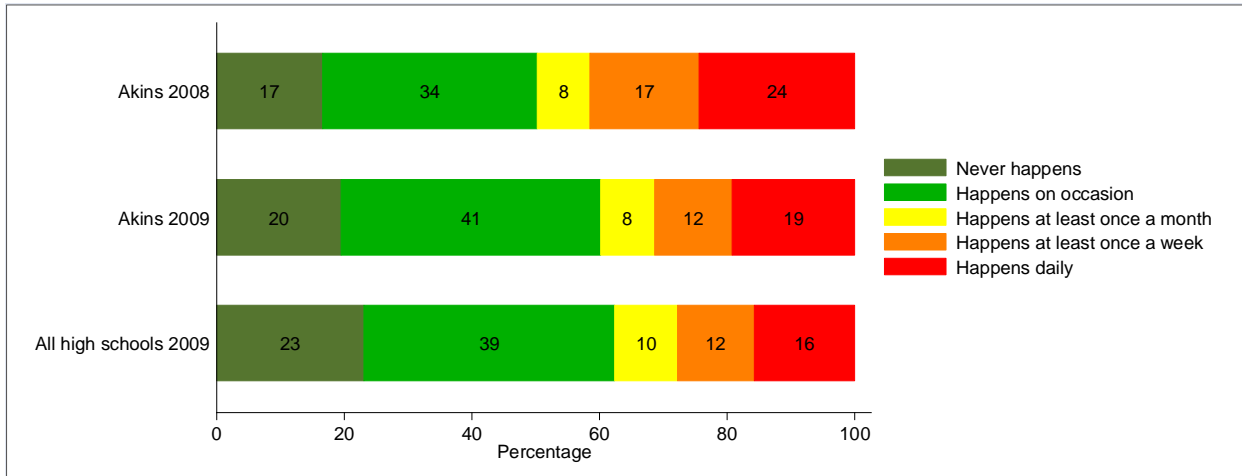
Note. Percentages may sum to more than 100% because respondents were allowed to choose multiple items.

## SCHOOL SAFETY ITEMS

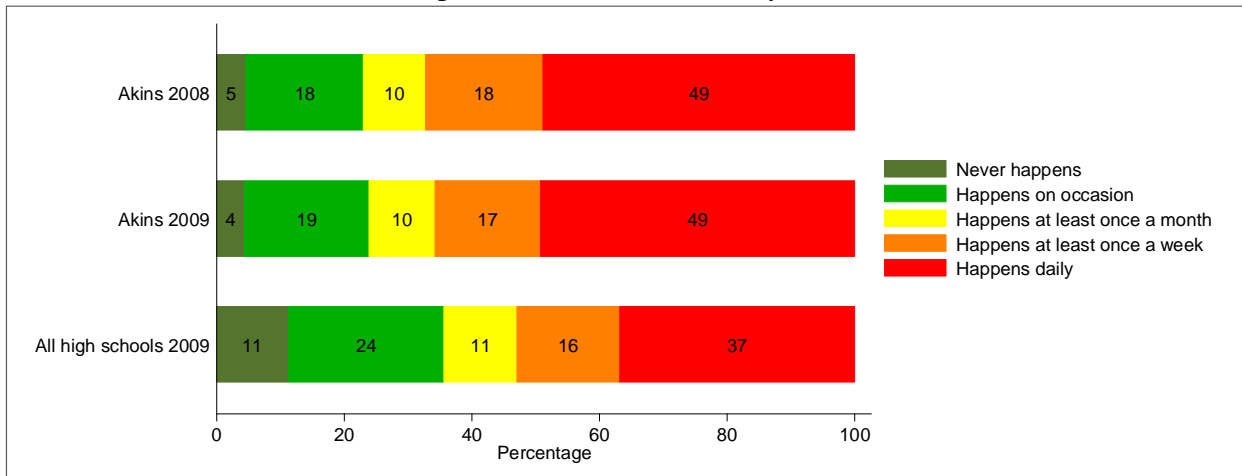
Q15a: How often does racial tension occur at your school?



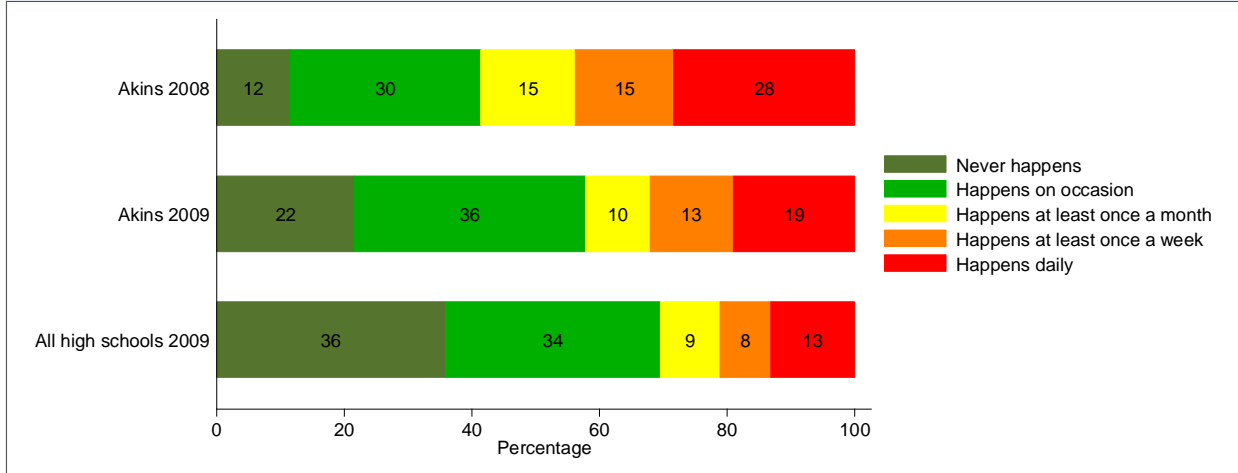
Q15b: How often does student bullying occur at your school?



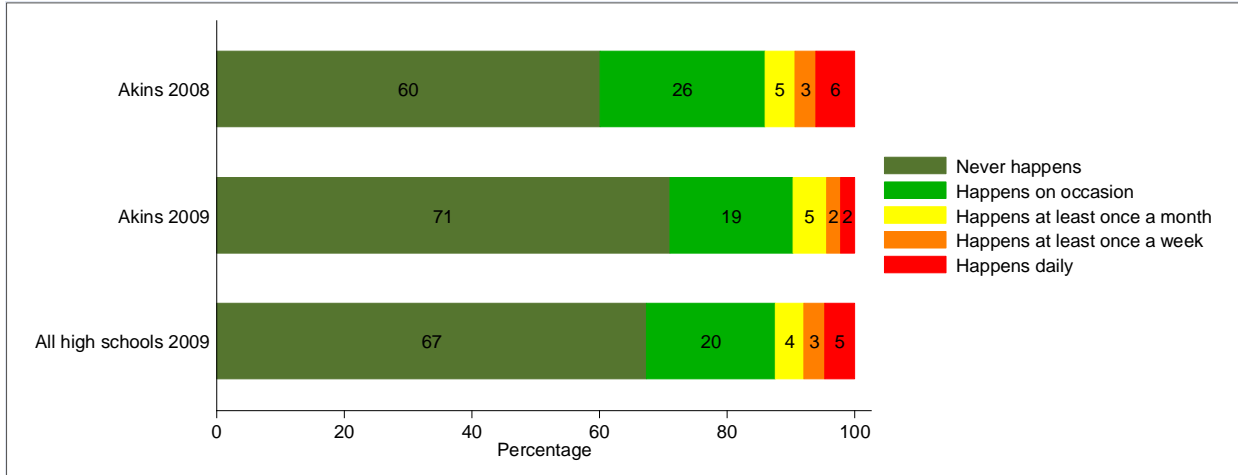
Q15c: How often do acts of disrespect for teachers occur at your school?



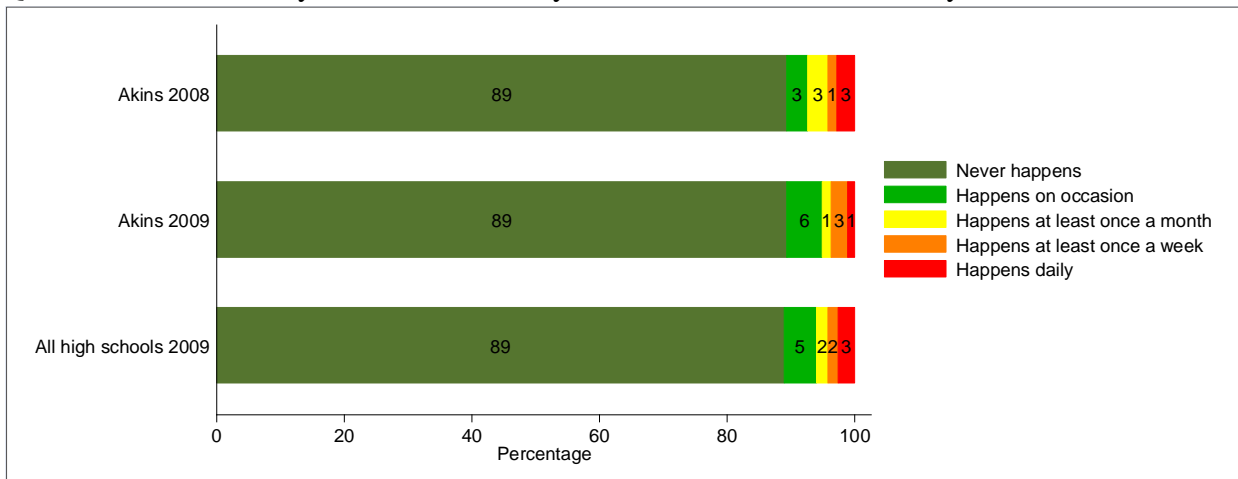
Q15d: How often do gang activities occur at your school?



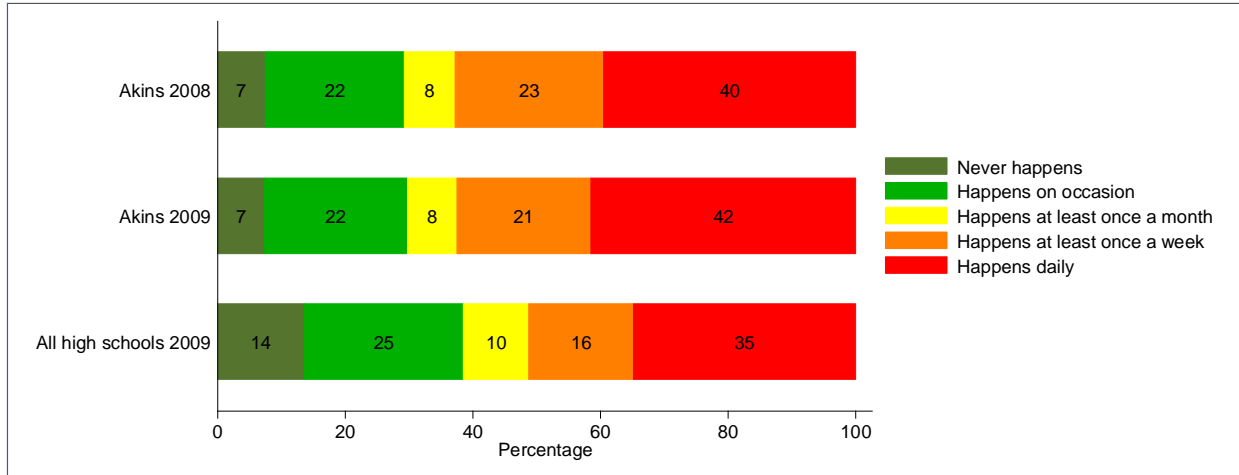
Q15e: How often have you experienced any type of bullying at your school?



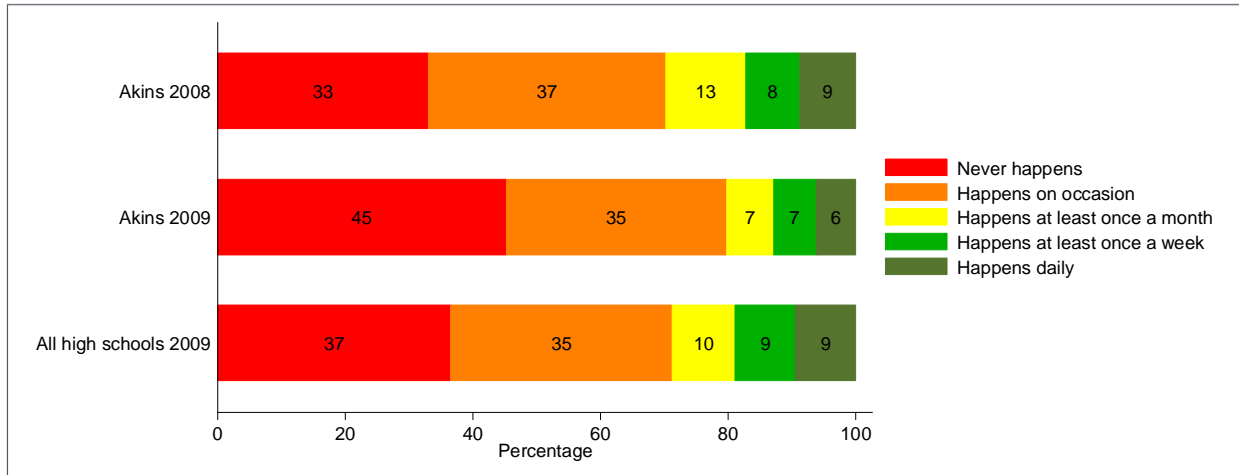
Q15f: How often were you absent because you did not feel safe on the way to/from school?



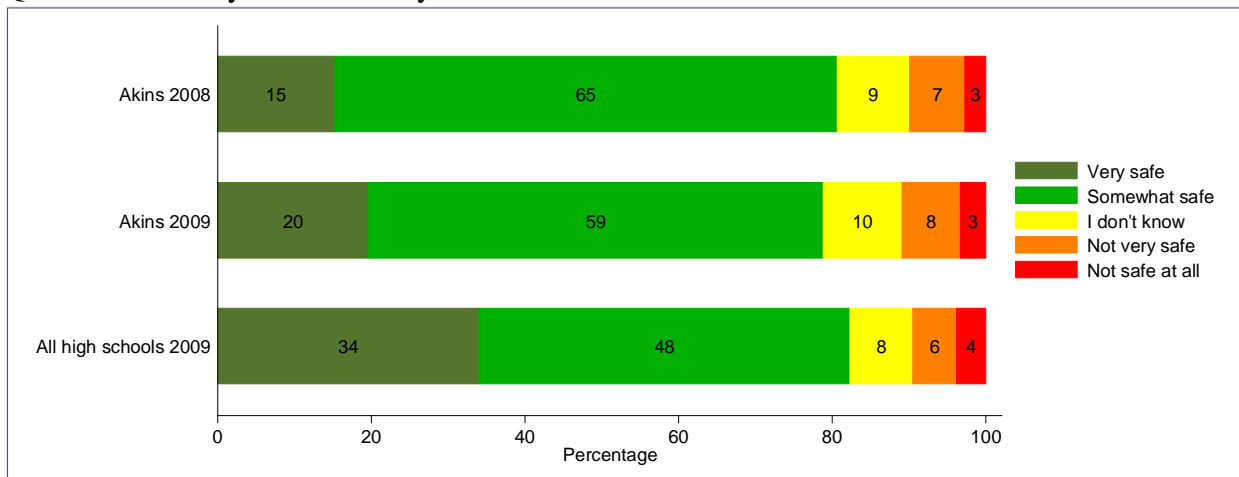
Q15g: How often does your teacher have to interrupt class to deal with student misbehavior?



Q15h: Do teachers or staff give you praise or rewards for good behavior?



Q8: How safe do you feel when you are at school?

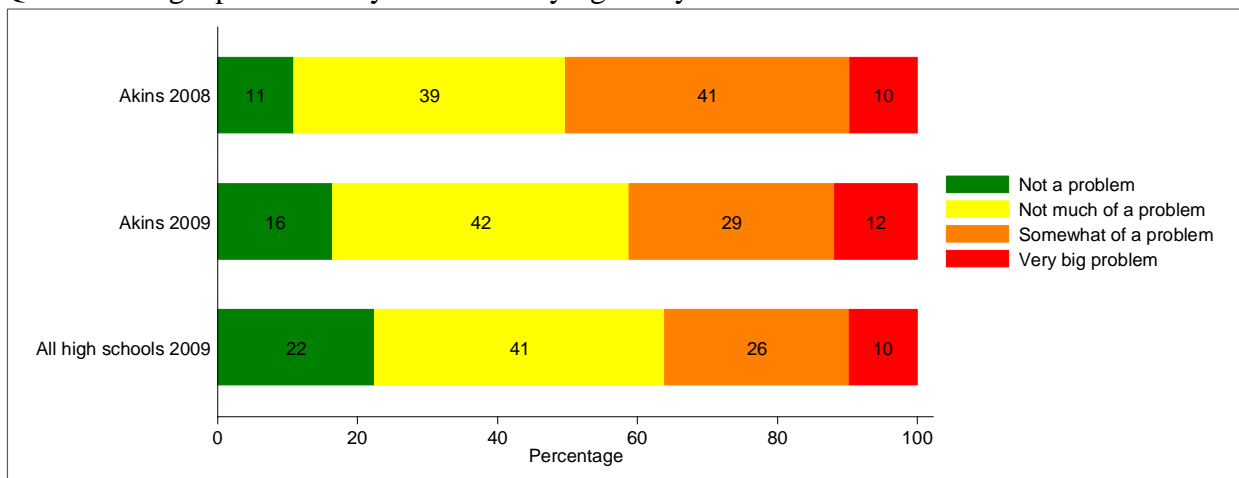


Q11: During this school year, have you experienced any of the following types of bullying at school?

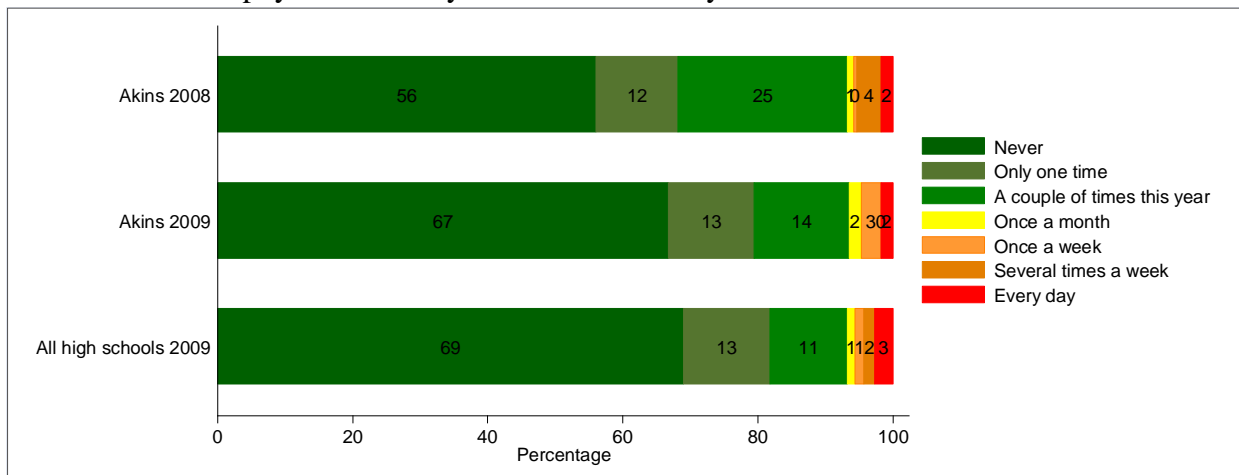
	Akins 2009	Percentage point change from 2008	All high schools 2009
Verbal	25%	-11	26%
Social	29%	-3	26%
Racial or ethnic harassment	20%	-8	19%
Physical	9%	-11	12%
Sexual harassment	8%	-8	12%
Intimidation	7%	-5	9%
Written	5%	-4	6%
None	55%	9	54%

Note. Percentages may sum to more than 100% because respondents were allowed to choose multiple items.

Q12: How big a problem do you think bullying is at your school?

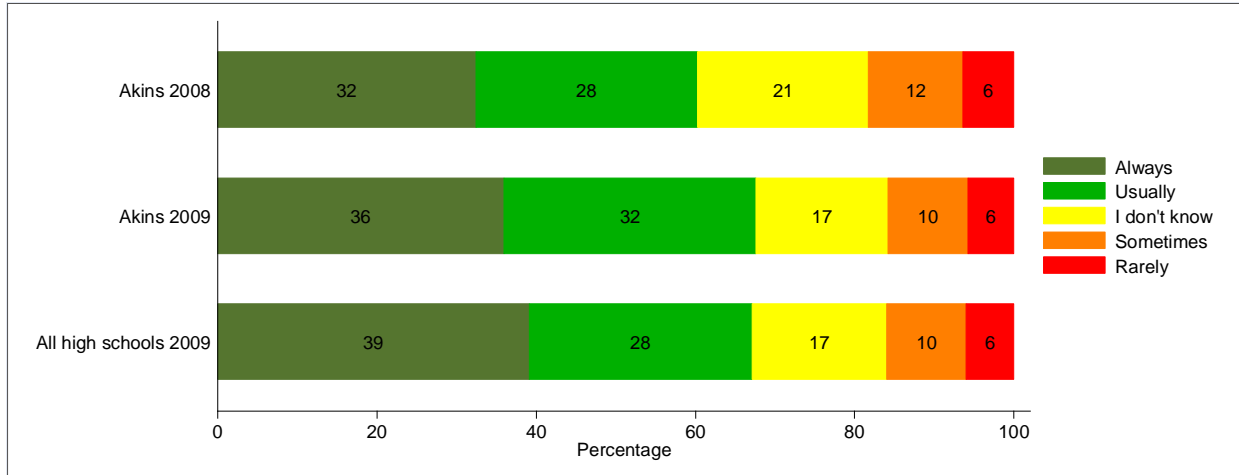


Q10: During this school year, how often have you or your close friends been physically harmed or threatened with physical harm by another student at your school?

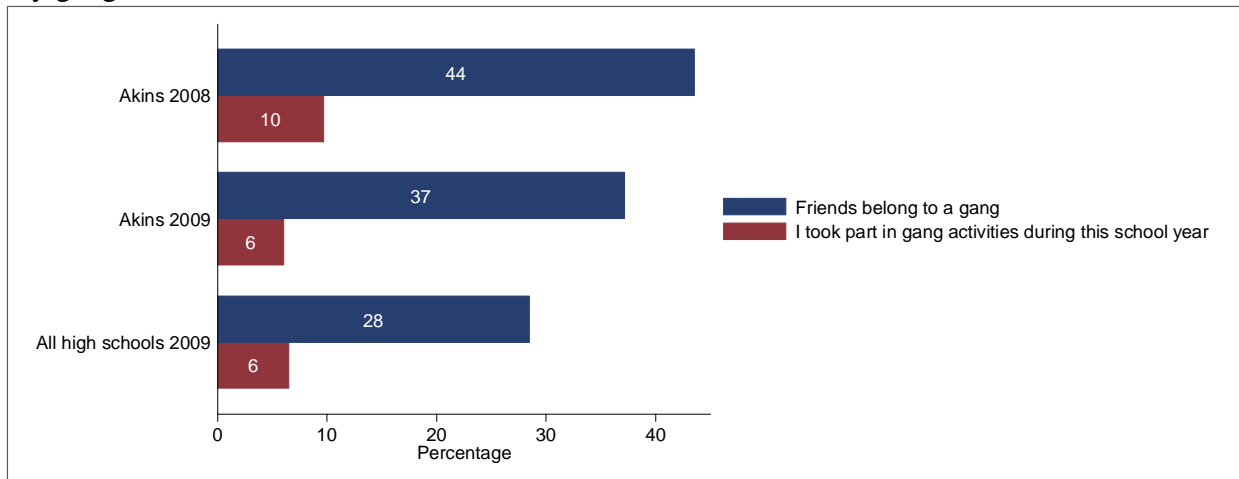




Q14: Are school rules about verbal or physical assaults or fighting enforced by school staff?

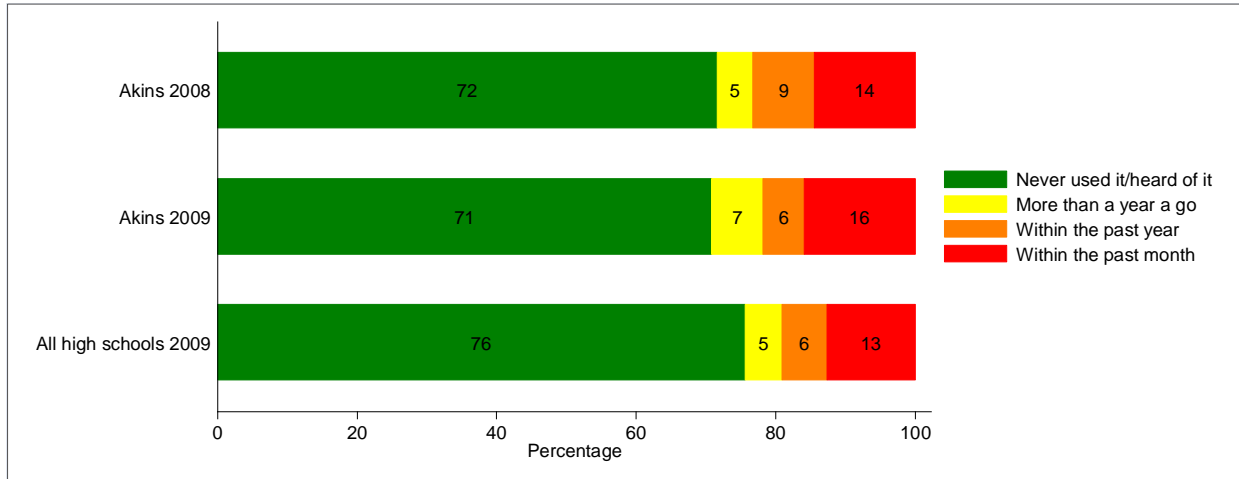


Q16-Q17: Do any of your friends belong to a gang? During this school year, did you take part in any gang activities?

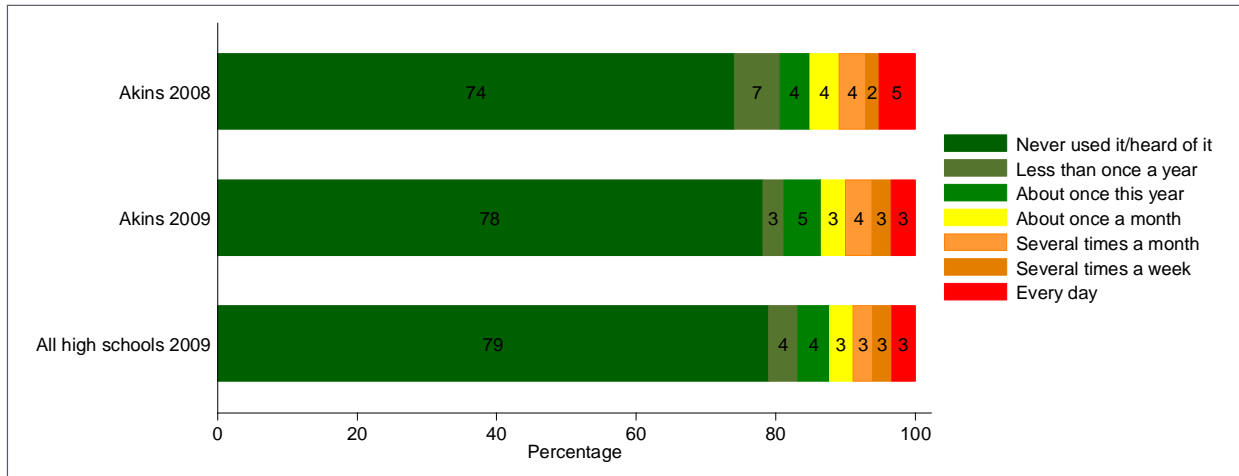


## SUBSTANCE USE ITEMS

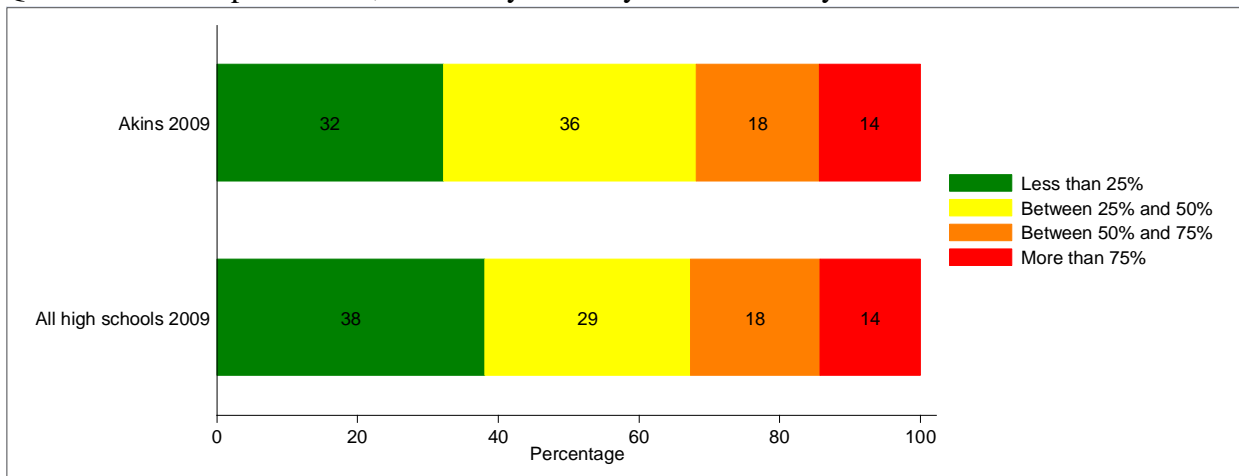
Q18A: What is the most recent you have used Tobacco?



Q21a: During this year, how often did you use Tobacco?

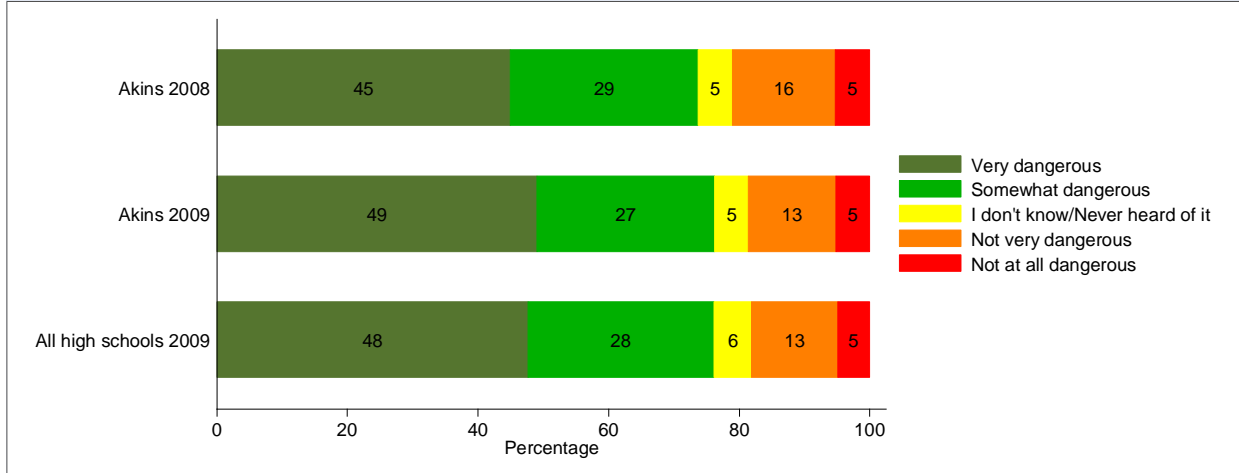


Q29a. Within the past month, how many kids at your school do you think have used tobacco?

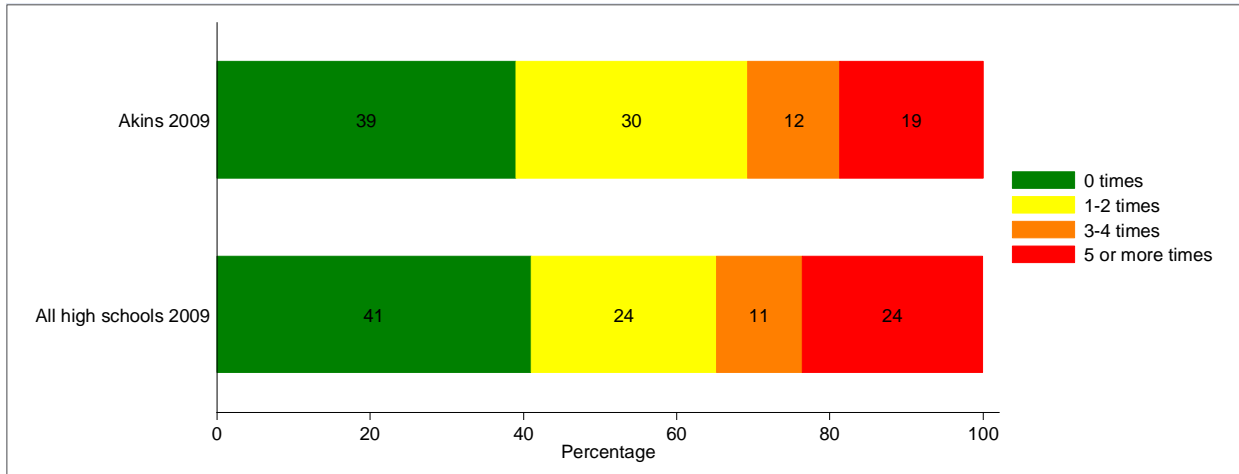


Note: This question was not asked in the 2007-2008 survey.

Q27a: How dangerous is it for kids your age to use Tobacco?

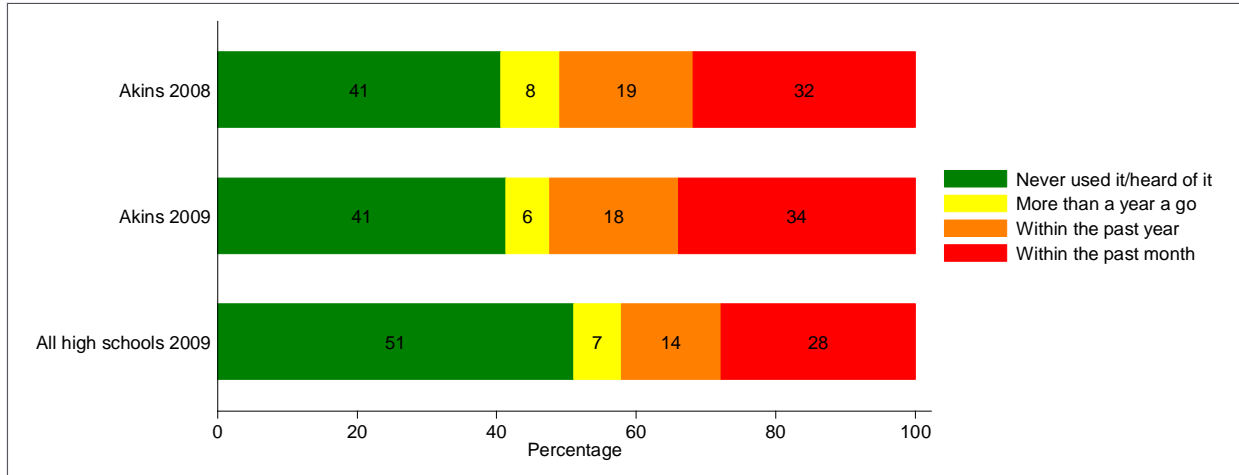


Q28g. During the school year, how many times have you experienced advertisements (TV, radio, billboard, magazine, internet, etc.) for tobacco products?

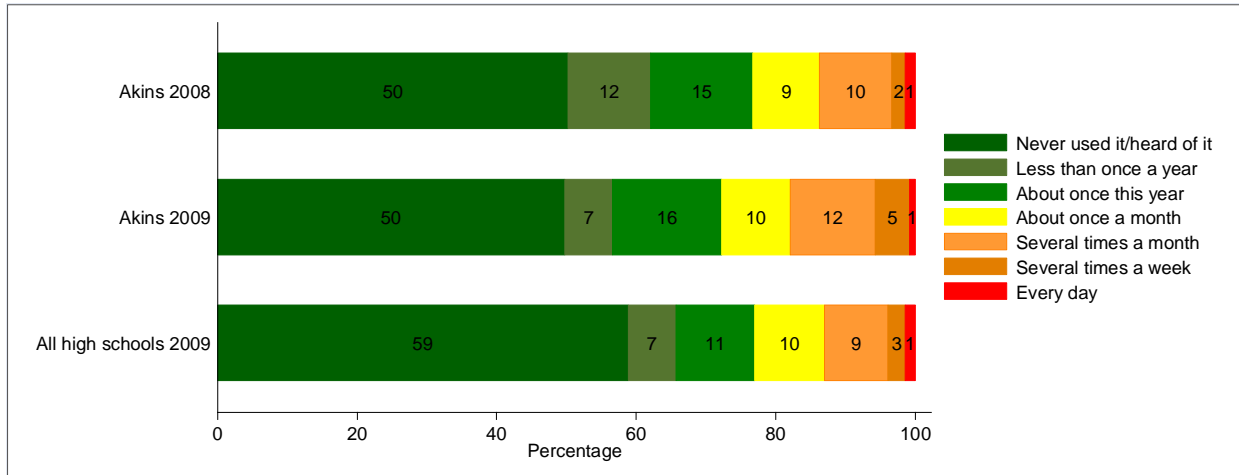


Note: This question was not asked in the 2007-2008 survey.

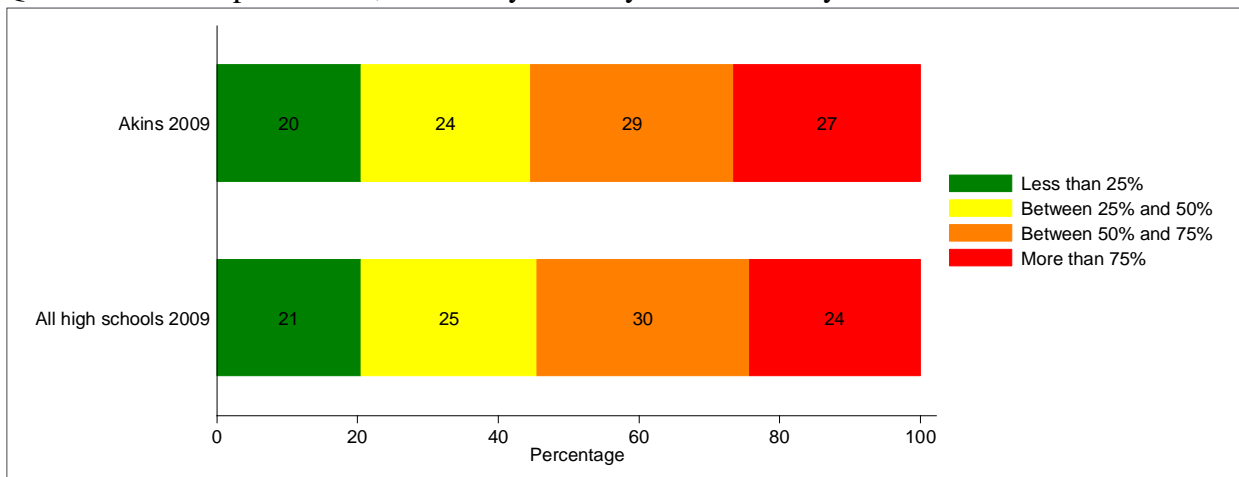
Q18B: What is the most recent you have used Alcohol?



Q21b: During this year, how often did you use Alcohol?

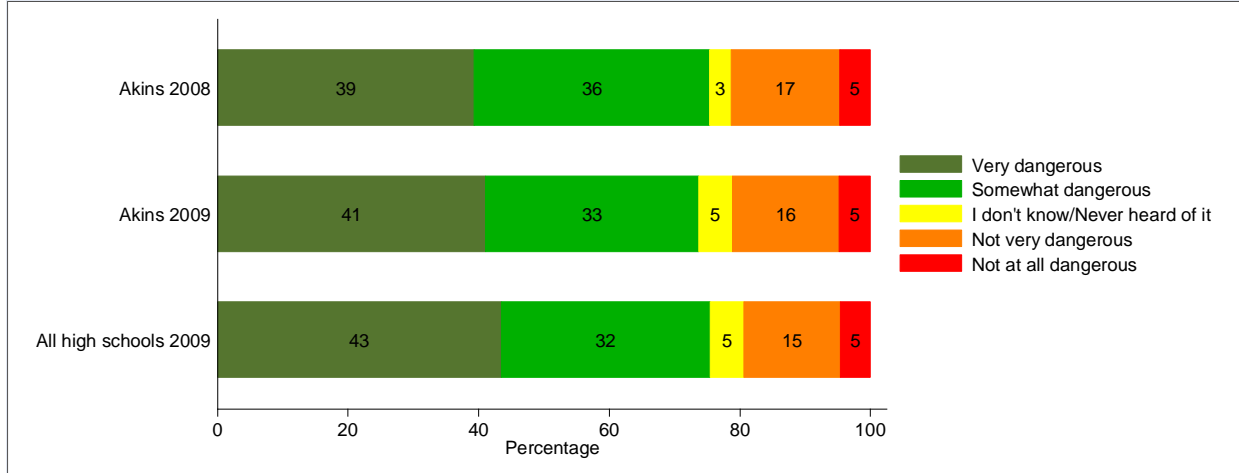


Q29b. Within the past month, how many kids at your school do you think have used alcohol?

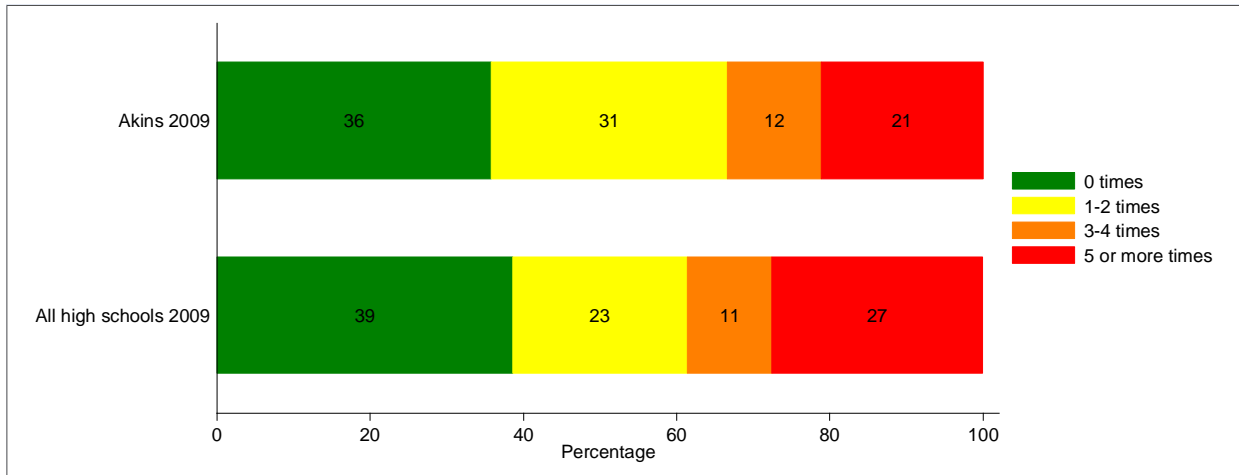


Note: This question was not asked in the 2007-2008 survey..

Q27b: How dangerous is it for kids your age to use Alcohol?

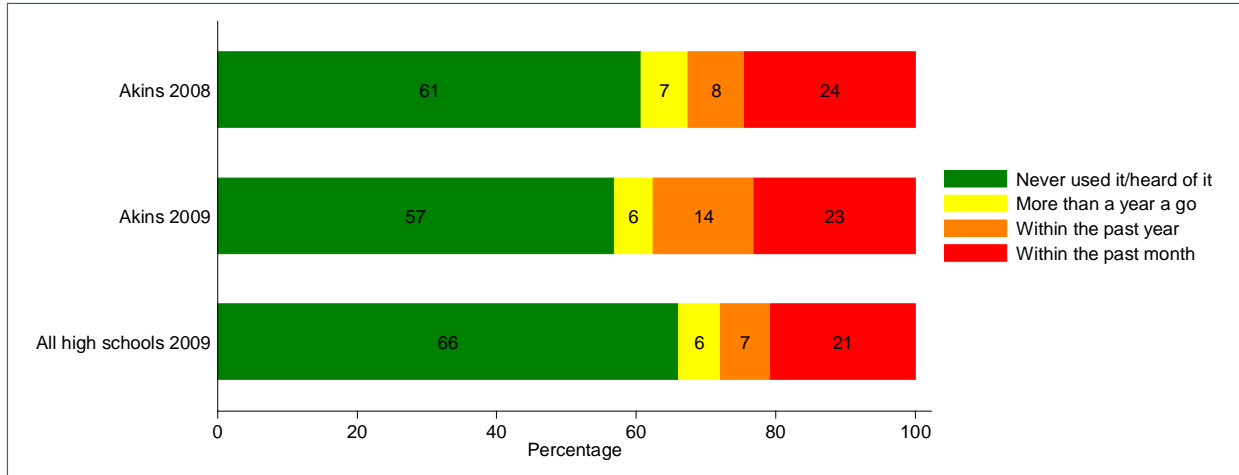


Q28f. During the school year, how many times have you experienced advertisements (TV, radio, billboard, magazine, internet, etc.) for alcohol products?

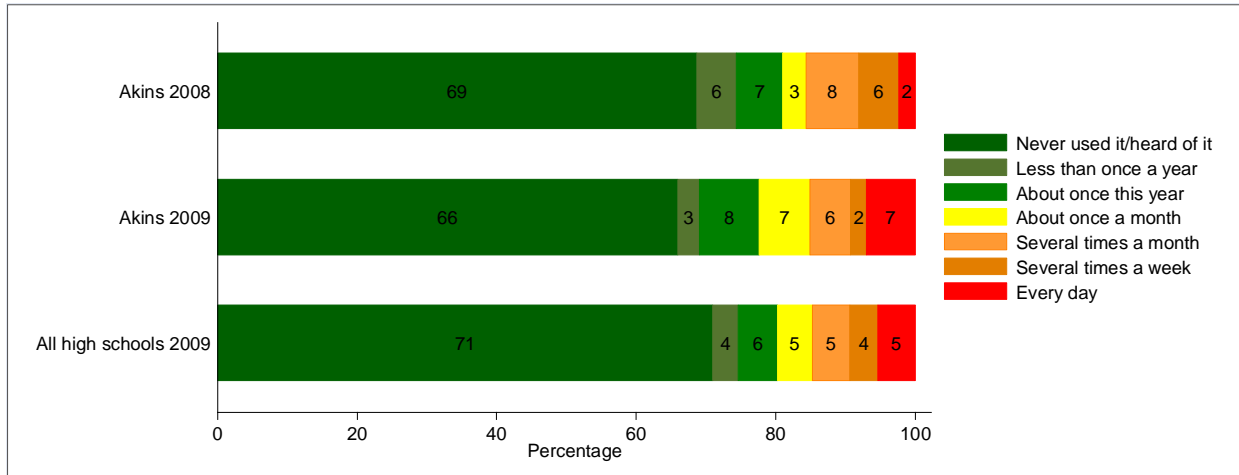


Note: This question was not asked in the 2007-2008 survey.

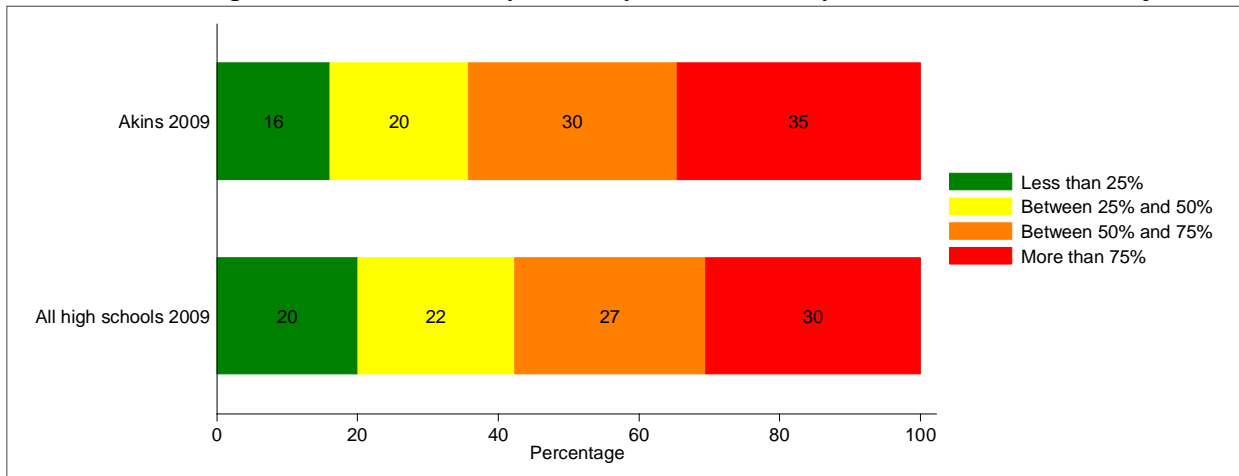
Q18C: What is the most recent you have used Marijuana?



Q21c: During this year, how often did you use Marijuana?

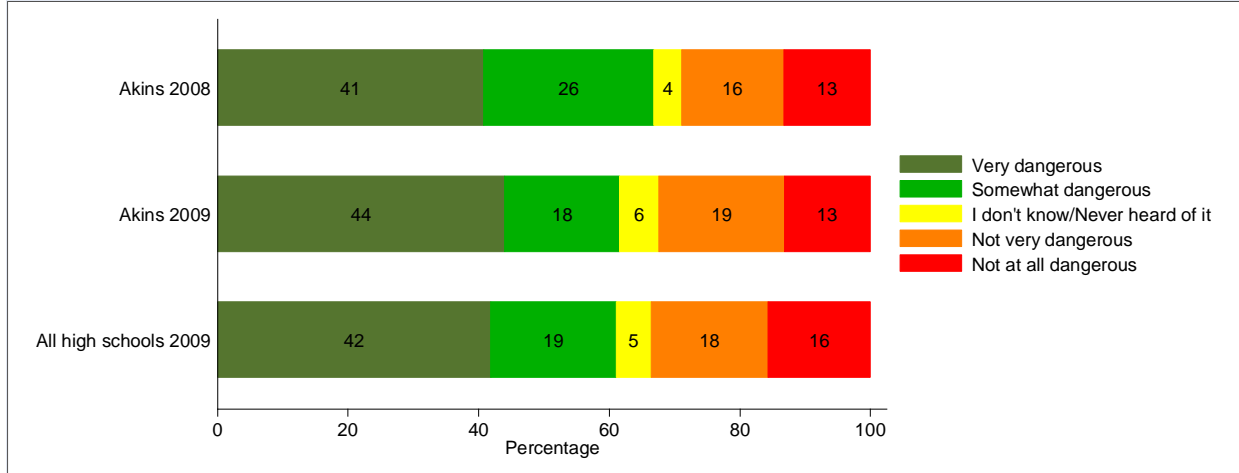


Q29c. Within the past month, how many kids at your school do you think have used marijuana?

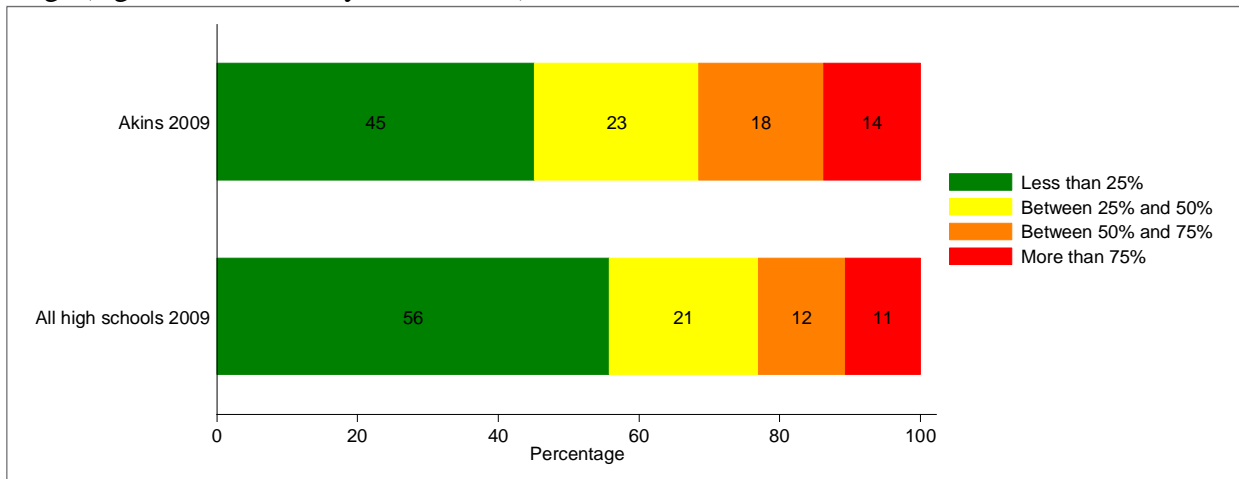


Note: This question was not asked in the 2007-2008 survey.

Q27c: How dangerous is it for kids your age to use Marijuana?

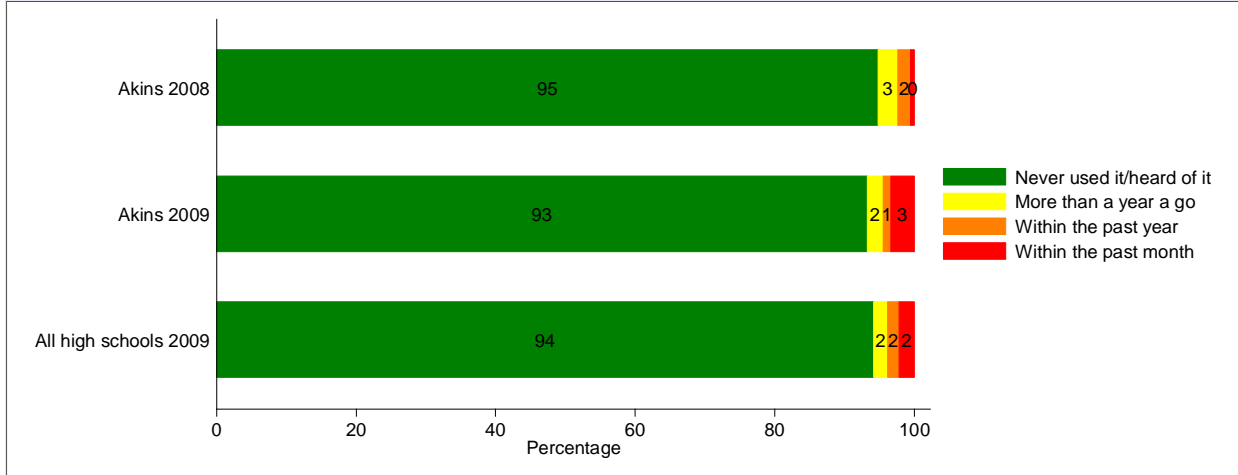


Q29d. Within the past month, how many kids at your school do you think have used other illegal drugs (e.g., cocaine, ecstasy, heroin, etc.) ?

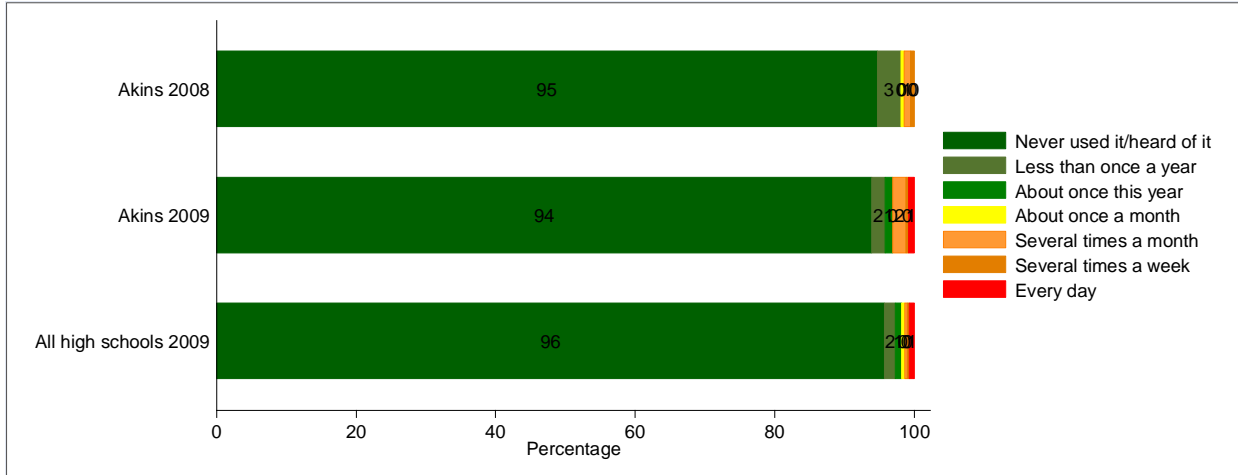


Note: This question was not asked in the 2007-2008 survey.

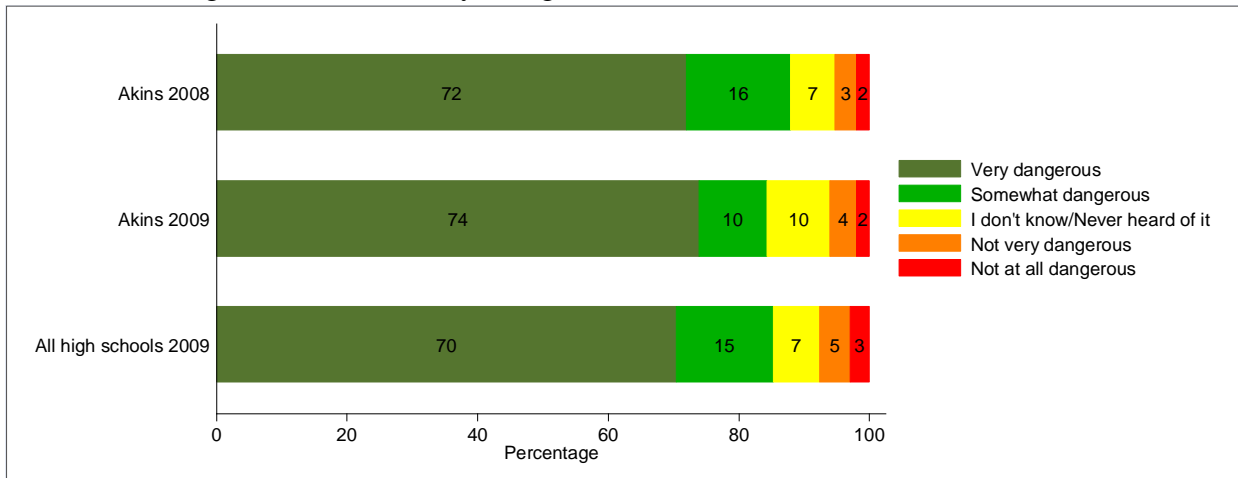
Q18D: What is the most recent you have used Inhalants?



Q21d: During this year, how often did you use Inhalants?

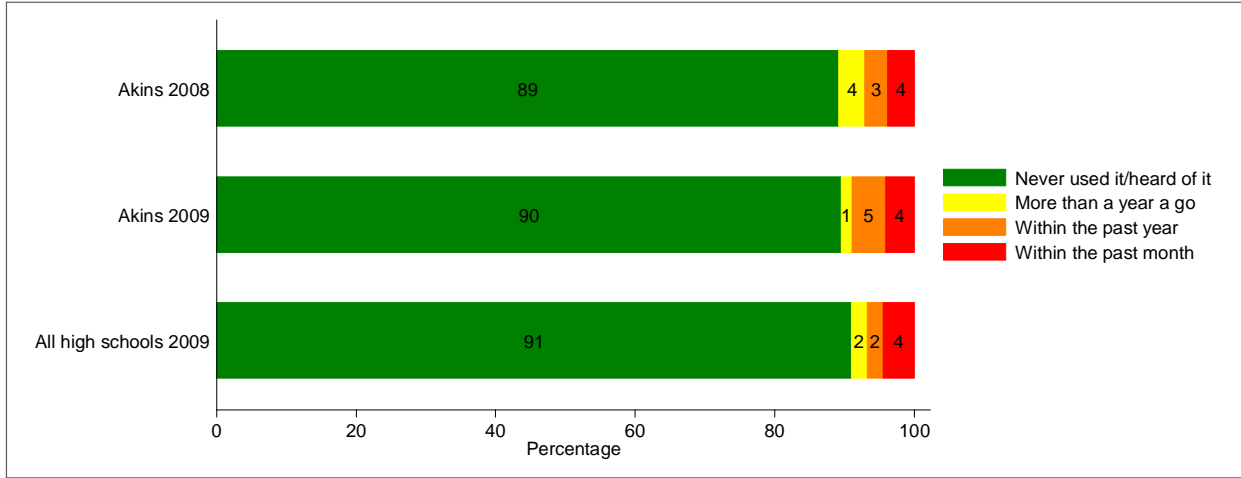


Q27d: How dangerous is it for kids your age to use Inhalants?

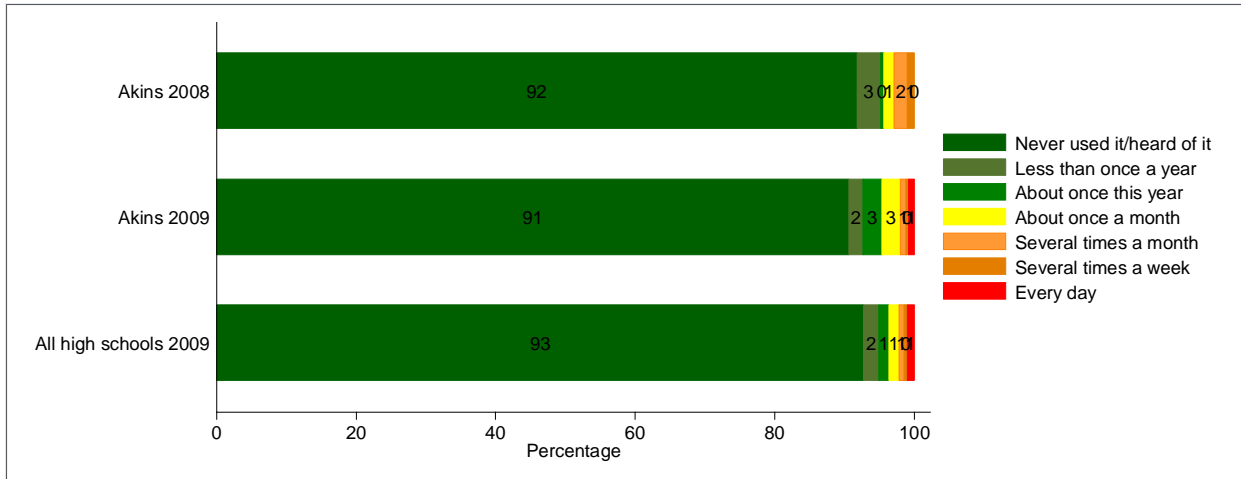




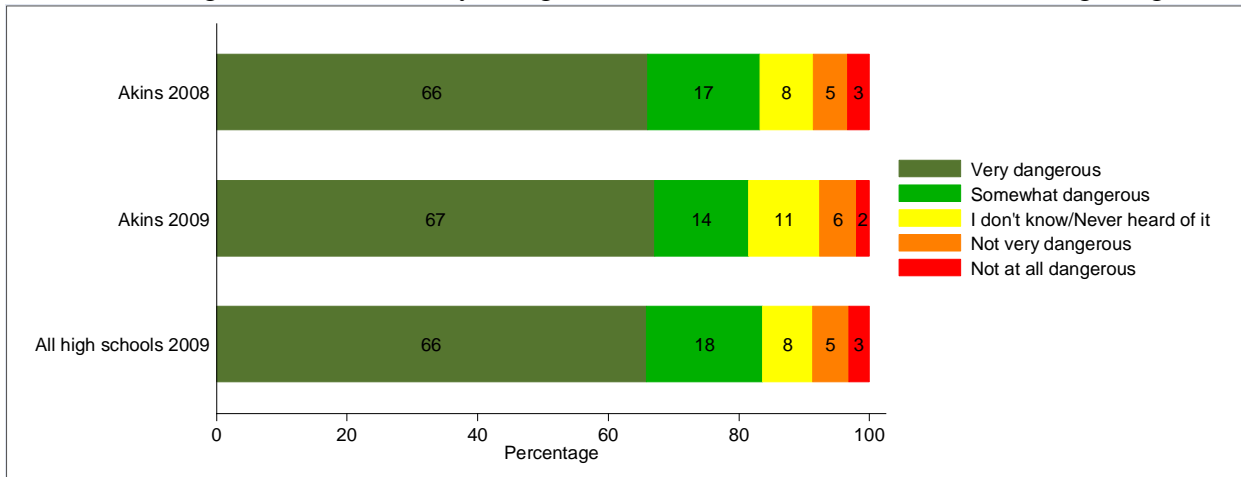
Q18E: What is the most recent you have used Over the Counter Medication to get high?



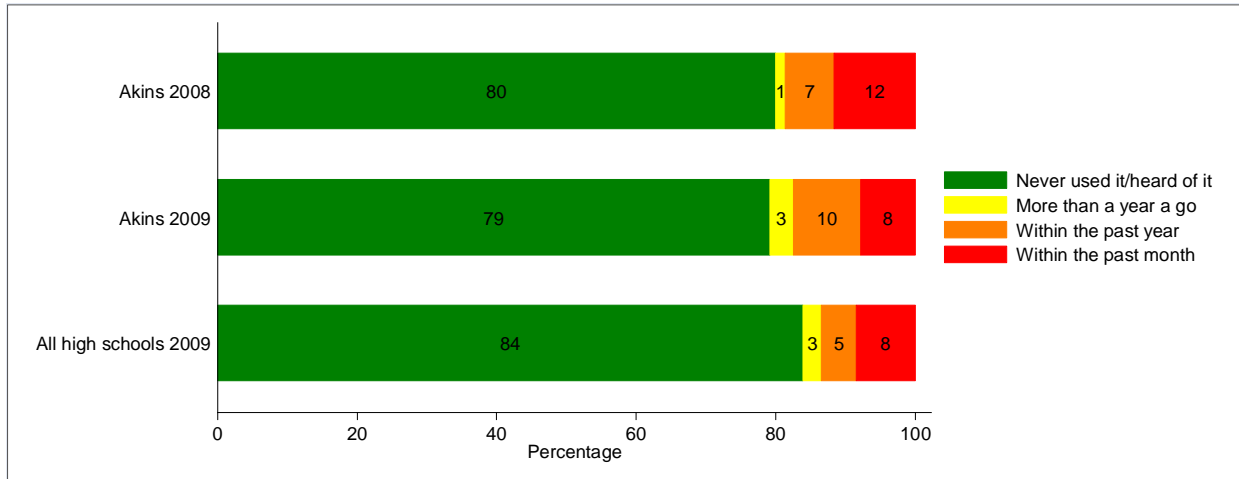
Q21e: During this year, how often did you use Over the Counter Medication to get high?



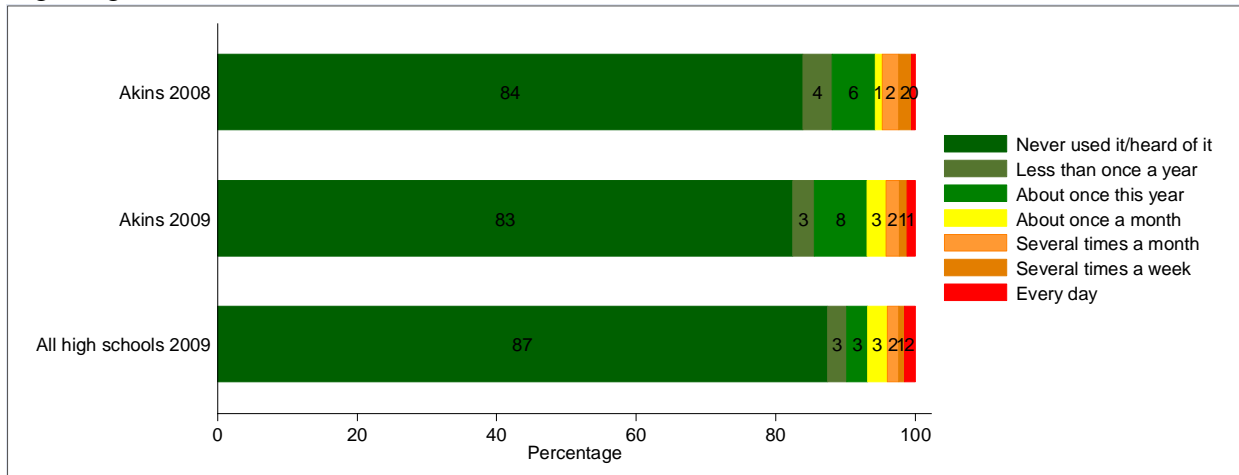
Q27e: How dangerous is it for kids your age to use Over the Counter Medication to get high?



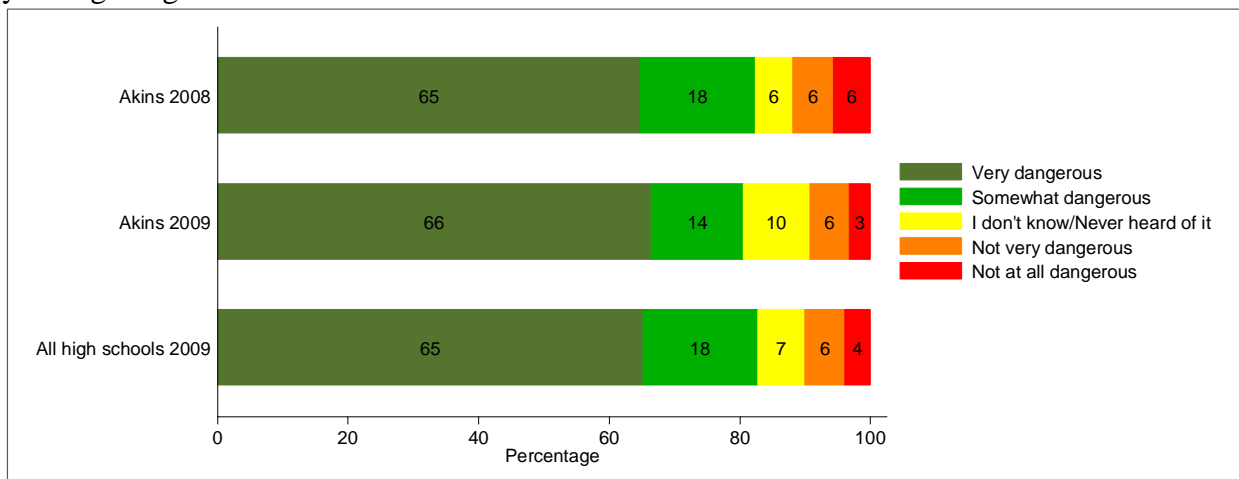
Q18f: What is the most recent you have used Prescription Drugs that were not prescribed to you to get high?



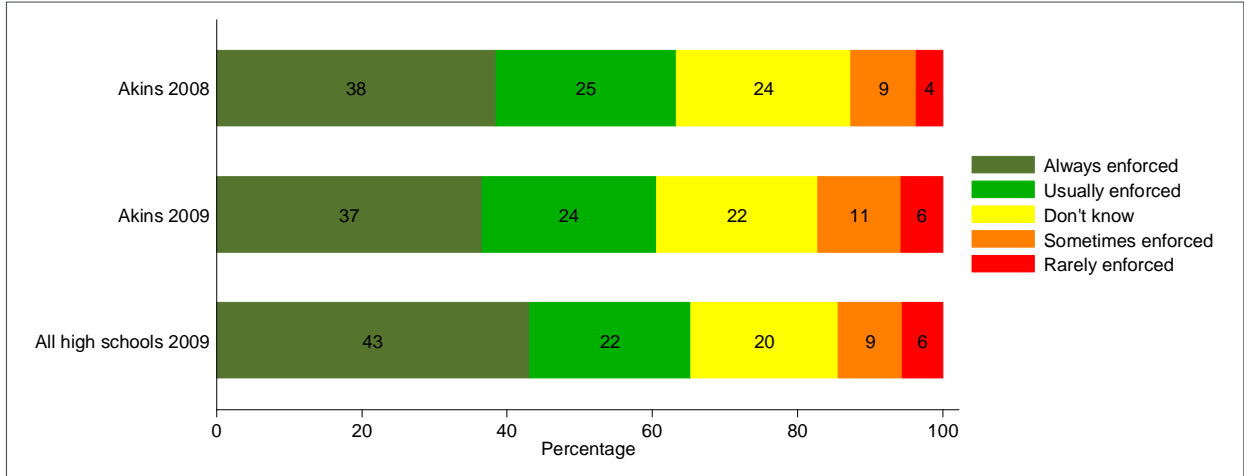
Q21f: During this year, how often did you use Prescription Drugs that were not prescribed to you to get high?



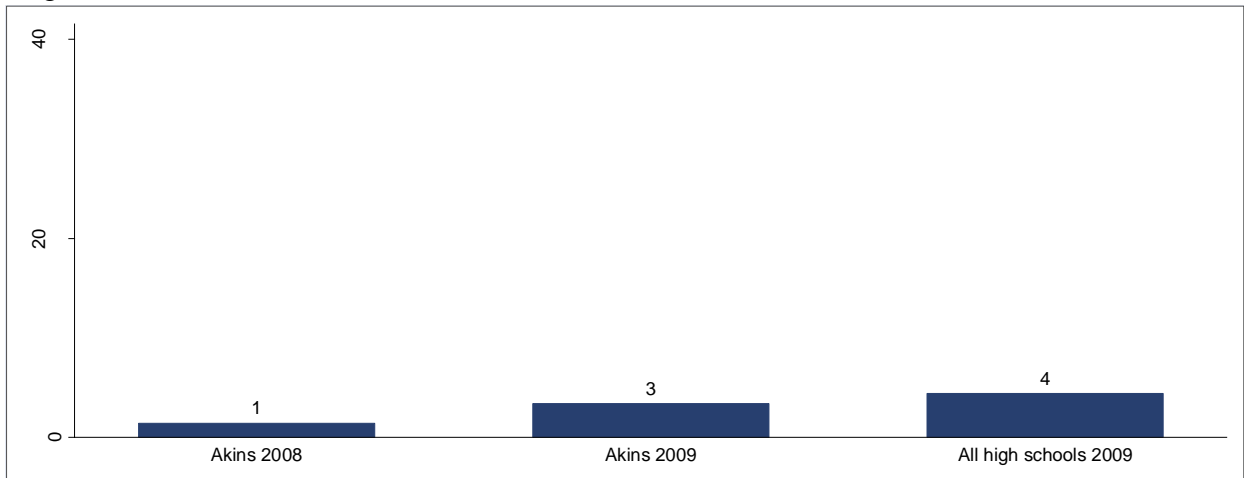
Q27f: How dangerous is it for kids your age to use Prescription Drugs that were not prescribed to you to get high?



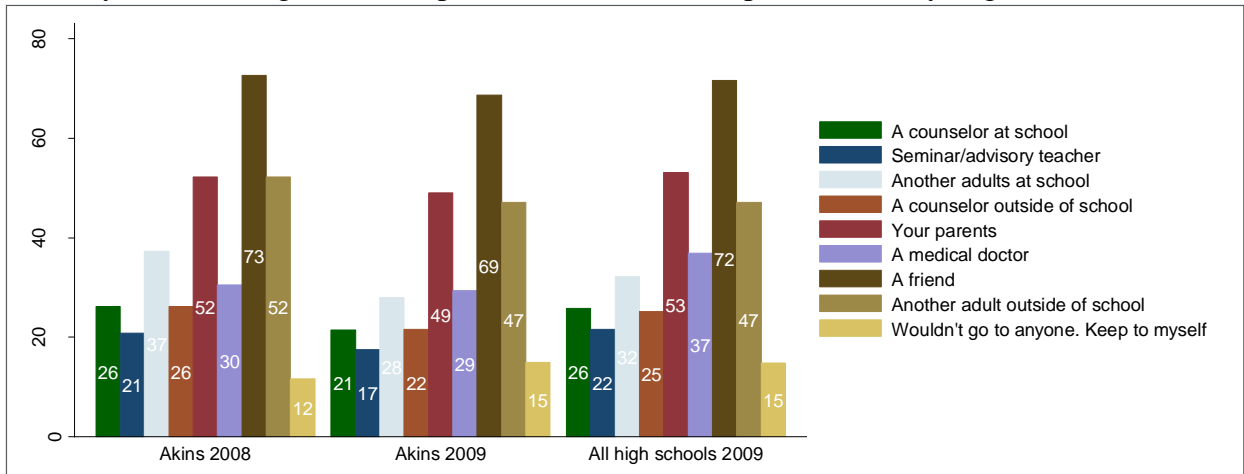
Q13: Are school rules about drug, alcohol, and tobacco use enforced by school staff?



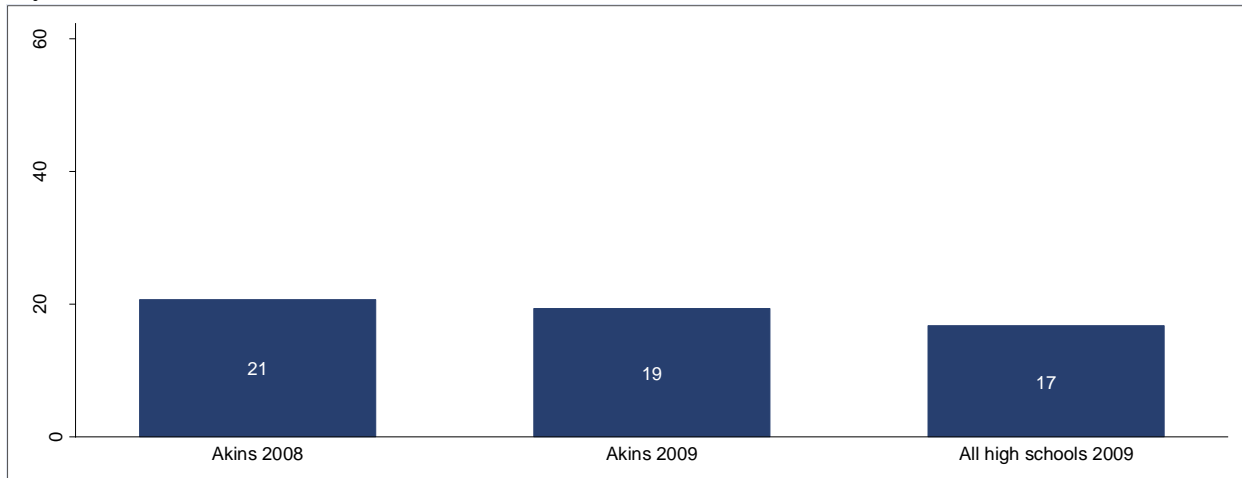
Q19: During this school year, have you gotten into trouble with the police because of tobacco, drugs, or alcohol?



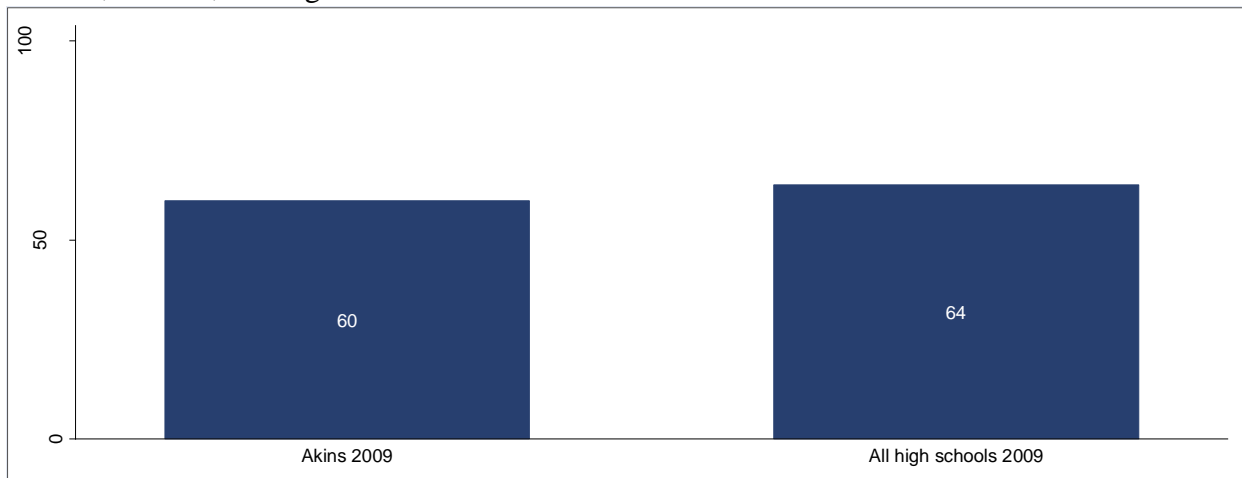
Q24: If you had a drug or alcohol problem and needed help, who would you go to?



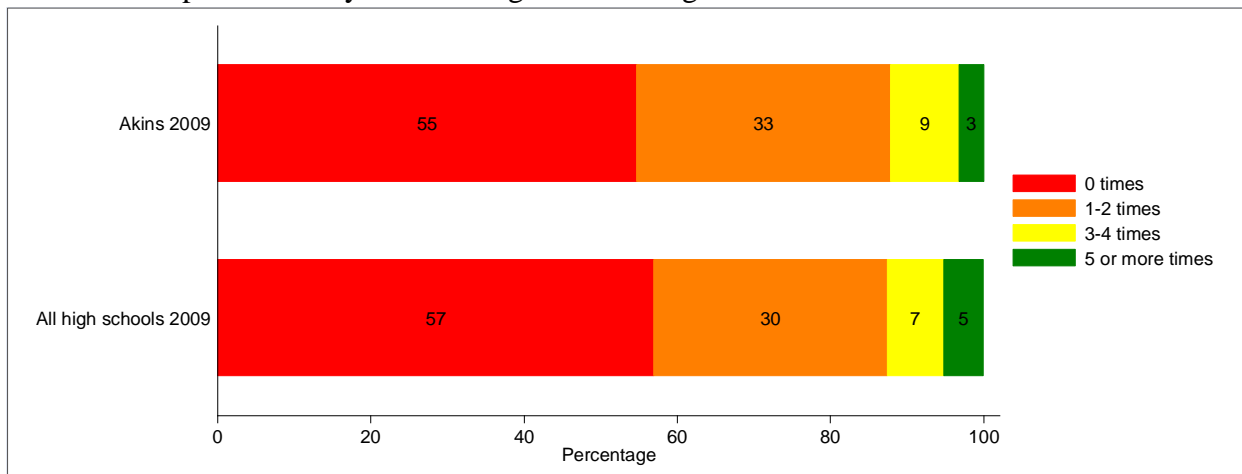
Q20: During this school year, have you attended any class while “high”, “stoned”, or “drunk” on any substance?



Q25: Within the past year, has your parent/guardian talked with you about the dangers of tobacco, alcohol, or drug use?

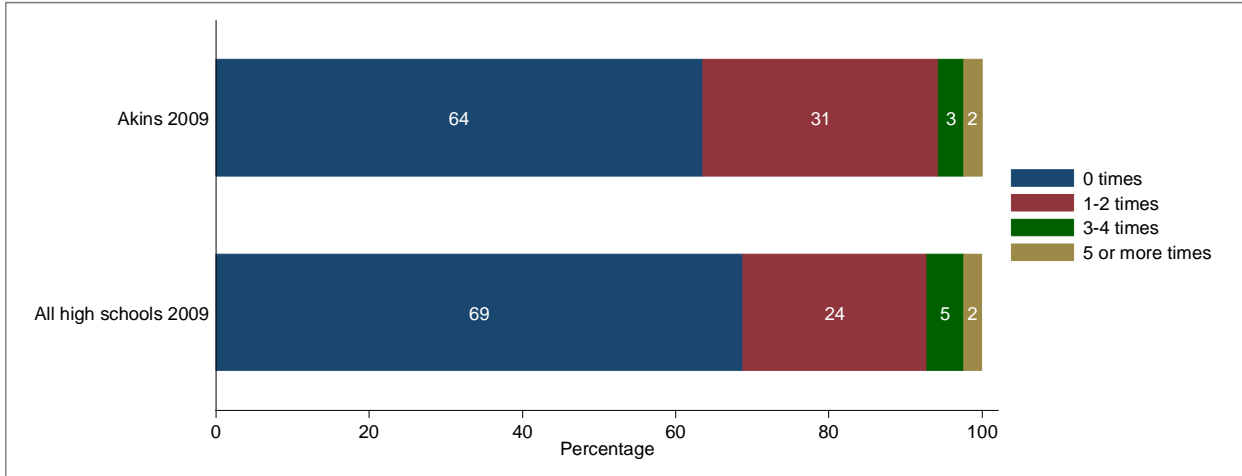


Q28a. During the school year, how many times have you experienced classes in which you learned and practiced ways of resisting and avoiding substance abuse?



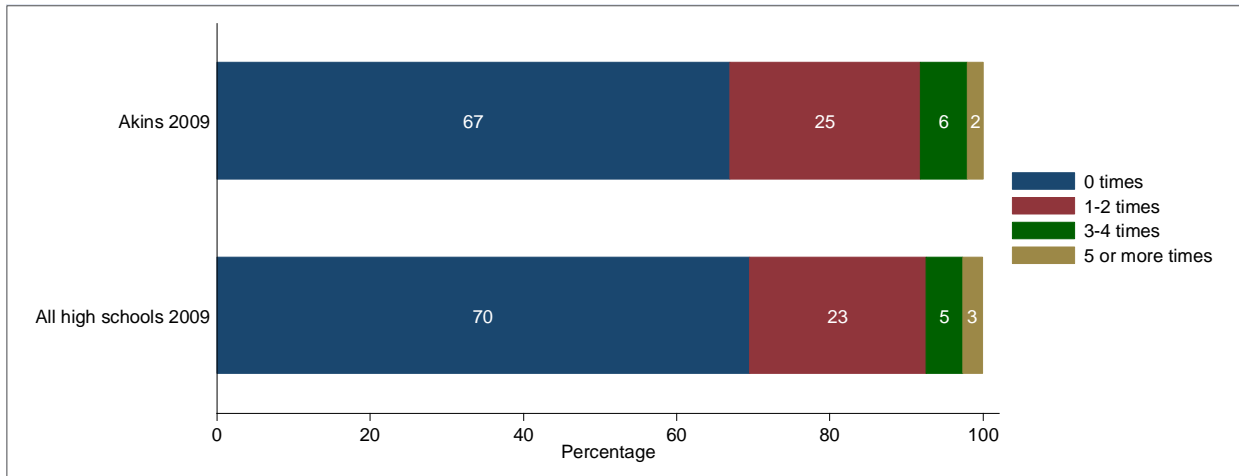
Note: This question was not asked in the 2007-2008 survey.

Q28b. During the school year, how many times have you experienced presentations by people who recovered from alcohol and drug abuse?



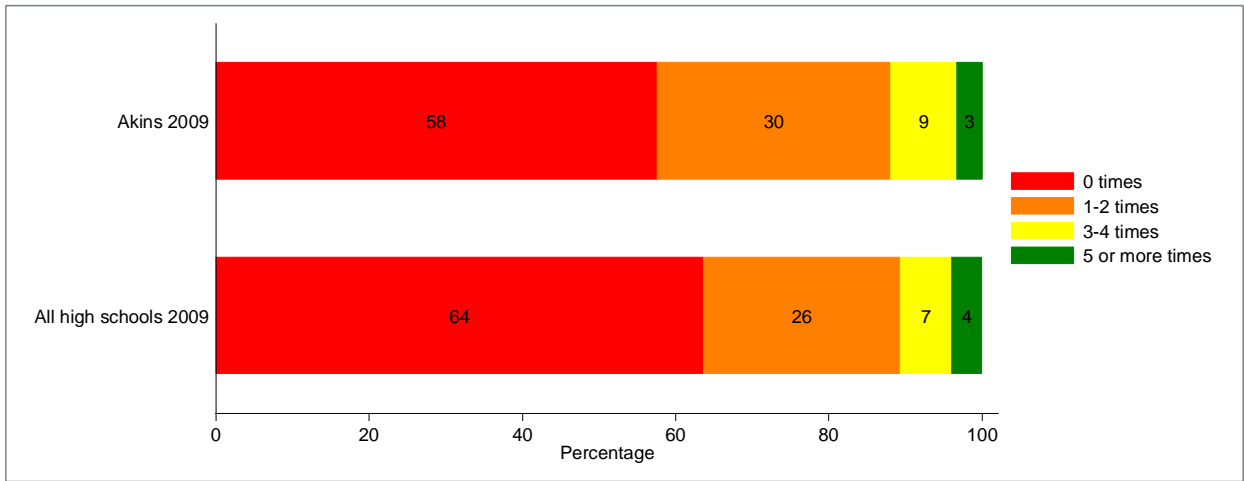
Note: This question was not asked in the 2007-2008 survey.

Q28c. During the school year, how many times have you experienced presentations by students who tell about how to avoid substance abuse?



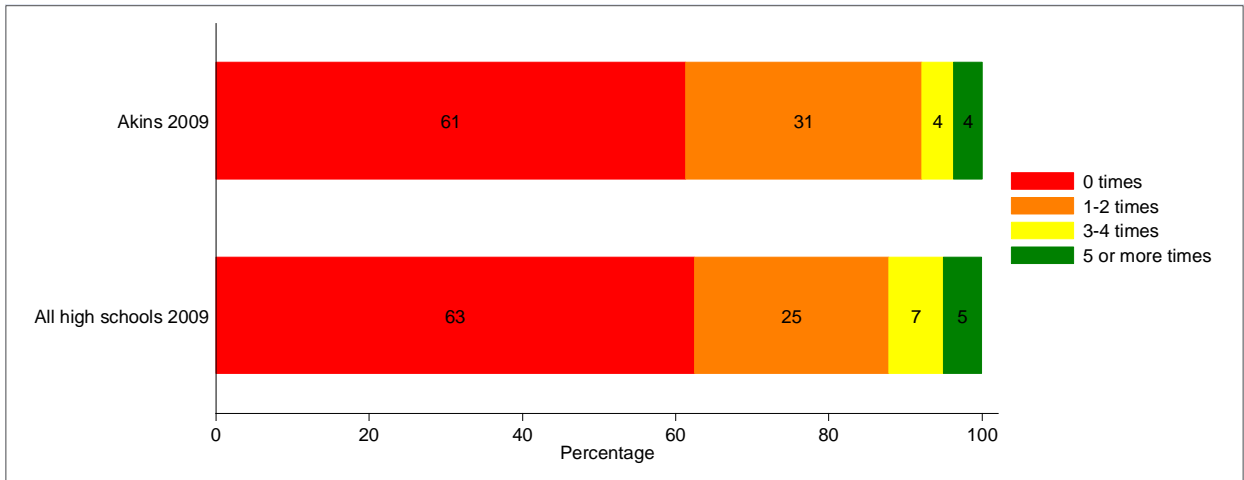
Note: This question was not asked in the 2007-2008 survey.

Q28d. During the school year, how many times have you received information about counseling or services to help kids quit smoking and stop substance abuse?



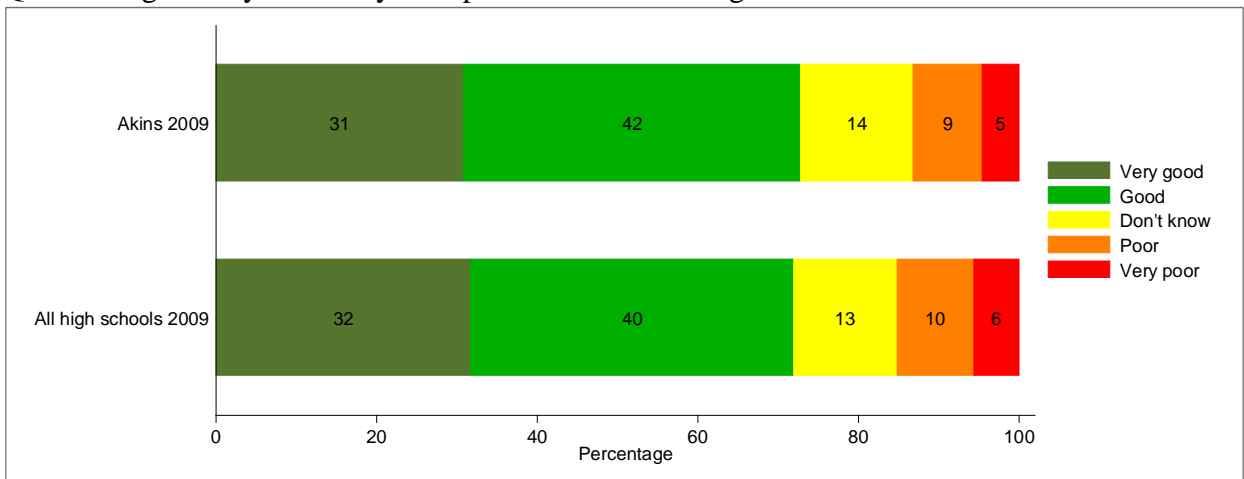
Note: This question was not asked in the 2007-2008 survey.

Q28e. During the school year, how many times have you experienced printed materials with cartoons and stories about how students avoid substance abuse?



Note: This question was not asked in the 2007-2008 survey.

Q30. How good is your ability to cope with stress and negative emotions?



Note: This question was not asked in the 2007-2008 survey.