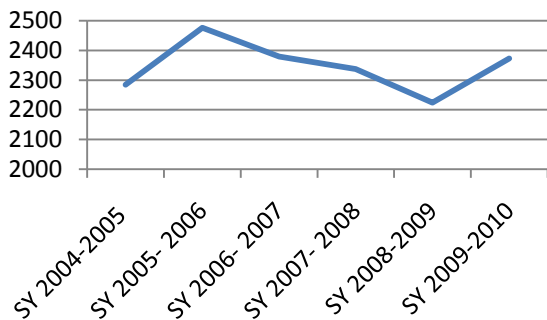


2010 SAT Test Results

About the SAT. The SAT is an assessment of student critical reading, mathematical reasoning, and writing skills created and administered through the College Board. The SAT score range is 200 to 800 points in each of the three subtests. A perfect SAT score is 2400. Students generally take the SAT during their junior or senior year of high school, and many colleges and universities use the SAT to make admission decisions. The College Board provides an annual summary of student performance at the end of each academic year. Results from that annual summary are described in this brief.

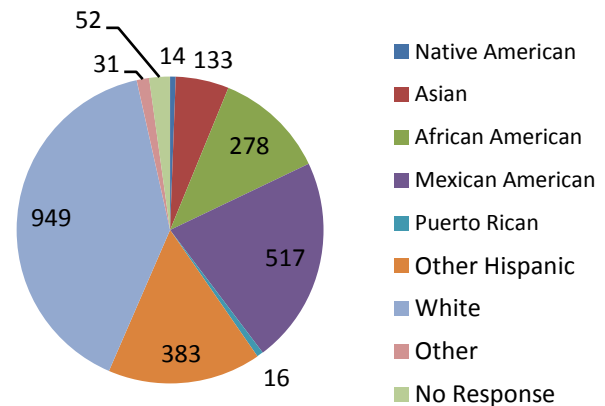
Austin ISD participation in the SAT increased. AISD student participation (n=2,373) in SAT testing increased in 2010, compared to prior years' participation (Figures 1 and 2). The increase in the 2010 SAT test participation was found for all student groups, except Native American students (less 2 students), Other (less 21 students) and No Response (less 27 students) categories.

Figure 1. Number of AISD Students Taking the SAT



Source. College Board Profile Report, 2010

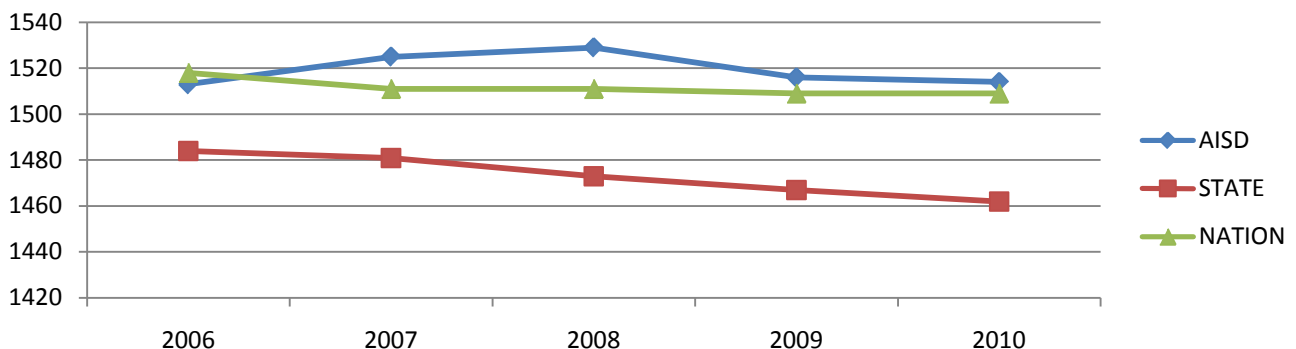
Figure 2. Description of AISD Students Taking the SAT



The average overall score for AISD students

was greater than the state and national averages. Overall AISD student performance on the SAT test remained constant between 2009 and 2010 and compared with district performance 5 years ago. In contrast, the 2010 average scores at the state have declined each year since 2006.

Figure 3. AISD, State, and National Overall Average SAT Scores, 2006-2010



Source. College Board Profile Report, 2010

2010 SAT Test Results

Average scores for each subject for AISD students were above those for the state in Critical Reading, Math and Writing. The AISD average score was above the nation in Math and similar to that of the nation in Critical Reading. The AISD average score in Writing was below the nation's. AISD average scores in 2010 decreased slightly in Critical Reading (down 2 points) and in Writing (down 4 points) compared with scores last year (Figures 4-6). State and national average scores also decreased in Critical Reading and Writing since 2006, with the greatest decline occurring for state average scores.

Figure 4. SAT Average Scores: Critical Reading

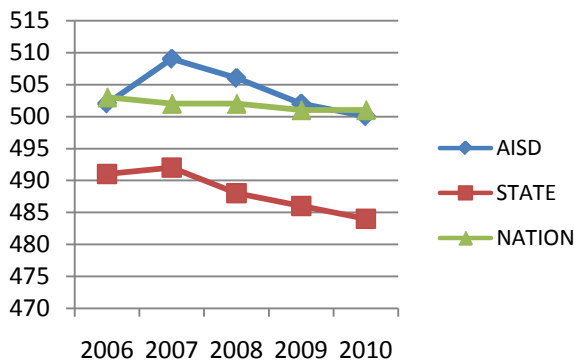
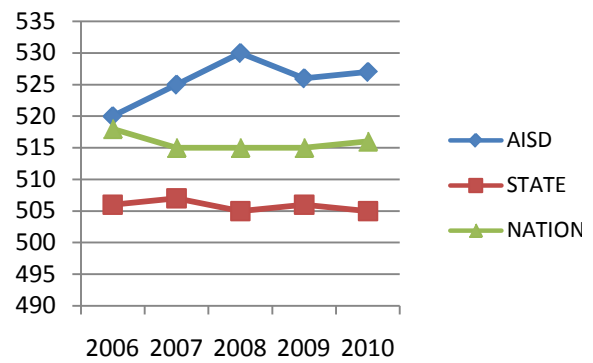


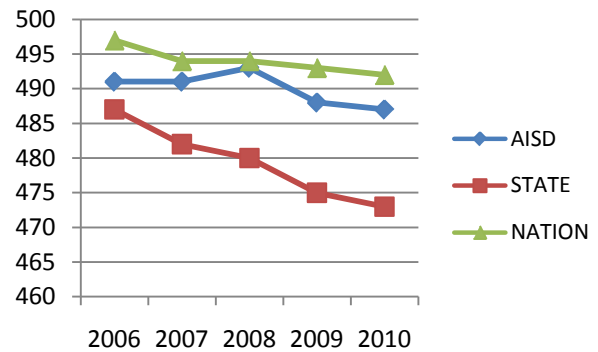
Figure 5. SAT Average Scores: Math



Between 2009 and 2010, the average SAT score in each subject area increased for Native American, Mexican American, and Puerto Rican students.

However, the average scores for White and African American students decreased in each subject area (Table 1). The SAT performance of African American, Mexican American, Puerto Rican, and Other Hispanic students continued to lag behind their White and Asian peers. Since 2006, the average scores for most student groups increased or remained stable with exception of African American student writing scores and the math and writing scores of students who identified themselves as Other Hispanic (Table 2).

Figure 6. SAT Average Scores: Writing



Source. College Board Profile Report, 2010

Table 1. SAT Average Scores by Subject Area, 2009 and 2010

	Critical Reading		Math		Writing	
	2009	2010	2009	2010	2009	2010
Native American	528	574	538	548	496	503
Asian	547	543	605	617	530	545
African American	419	407	435	429	408	395
Mexican American	448	459	475	488	439	445
Puerto Rican	480	504	499	533	490	493
Other Hispanic	444	439	463	464	434	432
White	571	565	594	589	554	549

Source. College Board Profile Report, 2010

2010 SAT Test Results

Table 2. Change in SAT Average Score Between 2006 and 2010, by Ethnicity

	Critical Reading	Math	Writing
Native American	61	13	10
Asian	5	21	25
African American	0	14	-11
Mexican American	5	9	1
Puerto Rican	-1	10	15
Other Hispanic	-9	2	-11
White	3	13	1

Source. College Board Profile Report, 2010

While the district overall average was greater than both the national and state averages, performance by campus varied widely across the district. LASA and Anderson high schools had the highest average scores. Green Tech, LBJ, and Reagan high schools had the lowest average scores.

Table 3. SAT Campus, District, State, & National Average Scores, 2010

School	Number Tested	Critical Reading	Math	Writing	Total
Akins	250	455	478	430	1363
Anderson	329	564	609	548	1721
Austin	288	525	549	510	1584
Bowie	451	525	565	513	1603
Crockett	190	427	452	421	1300
Eastside-Green Tech	25	392	398	390	1180
Garza	24	464	460	455	1379
Lanier	133	394	432	385	1211
LASA	164	623	640	614	1877
LBJ	95	378	398	371	1147
McCallum	250	551	554	532	1637
Reagan	61	379	414	372	1165
Travis	112	406	429	404	1239
AISD	2,373	500	527	487	1514
State	148,102	484	505	473	1462
National	1,547,990	501	516	492	1509

Source. College Board Profile Report, 2010

Reference

College Board (2010). *College-Bound Seniors District Profile Report for Austin Independent School District (AISD)*, College Board, September 2010.