

Results 2013. Overall SAT results for Austin Independent School District (AISD) students in the 2012–2013 school year remained stable compared with results from past years. Highlights of the SAT results include:

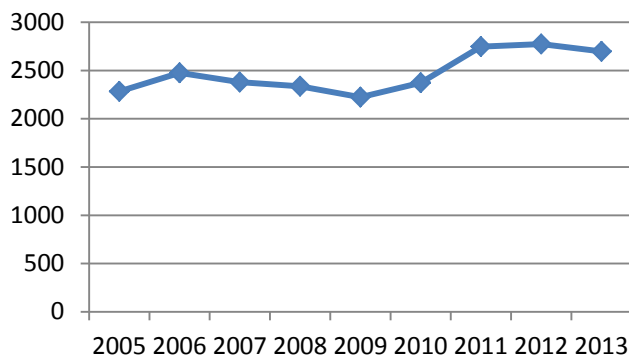
- In contrast with an increased level of SAT participation at the national level, district and state SAT participation levels decreased slightly from 2011–2012 to 2012–2013: 2,698 AISD students took the SAT in the 2012–2013 school year.
- The district’s overall average SAT score of 1505 represented an increase from last year’s district average of 1496. The district’s overall average SAT score also exceeded the state (1437) and the national (1498) averages.
- In reading and math, the average score for AISD students exceeded state and national average scores. In writing, the average AISD student score was greater than the state only.
- An examination of year-to-year performance and performance over five years revealed greater average scores in reading for most student groups in 2012-2013, while the average score in writing decreased for most student groups in 2012-2013.
- The overall average SAT score varied across high school campuses and ranged between a 1960 at LASA and a 1175 at Lanier.
- The top three intended college majors identified by AISD SAT test-takers were biological sciences (e.g., agriculture or health professions), social sciences (e.g., education, public affairs, history), and physical sciences (e.g., engineering, math, computer sciences).
- The top five institutions receiving SAT scores from AISD students were Texas State University, the University of Texas at Austin, the University of Texas at San Antonio, Texas A&M University, and Baylor University.

About the SAT. The SAT is an assessment of critical reading, mathematical reasoning, and writing skills created and administered through the College Board. The SAT score range is 200 to 800 points for each of the three subtests. A perfect SAT score is 2400.

Students generally take the SAT during their junior or senior year of high school, and many colleges and universities use the SAT to make admission decisions. The College Board provides an annual summary of student performance at the end of each academic year. Results from the annual summary are described in this brief.

In contrast with an increased level of SAT participation at the national level, district and state SAT participation levels decreased slightly in 2012–2013. Since 2010-2011, SAT test participation for Mexican American students increased, while SAT test participation declined for African American, Other Hispanic, and White students (Figure 1 and Table 1).

Figure 1. Number of AISD Students Taking the SAT



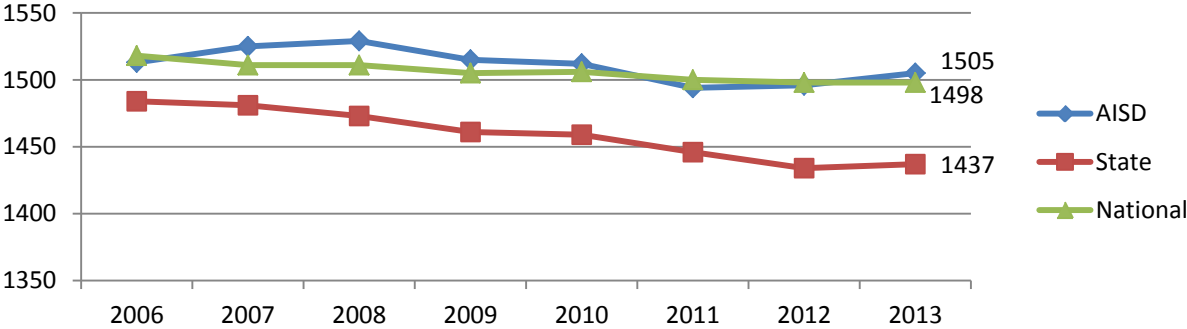
Source: College Board Profile Report, 2013

Table 1. Number of AISD Students Taking the SAT

	2011	2012	2013
Native American	20	13	18
Asian	150	147	151
African American	324	314	299
Mexican American	579	656	676
Puerto Rican	13	14	17
Other Hispanic	478	471	439
White	1,107	1,062	1,006
Other	50	61	59
No response	26	36	33
All Students	2,747	2,774	2,698

The district's overall average SAT score of 1505 represented an increase from last year's district average of 1496. The district's overall average SAT score also exceeded the state (1437) and the national (1498) averages. After a decline in overall average score between 2008 and 2011, there has been an uptick in the district's overall average SAT scores over the past two years (Figure 2). The 2013 overall average SAT scores at the state and national levels decreased from the overall averages reported five years ago as well. The state overall average score increased slightly this year from last year, and the national overall average score remained the same.

Figure 2. AISD, State, and National Overall Average SAT Scores, 2006-2013



Source. College Board Profile Report, 2013

In reading and math, the average scores for AISD students exceeded state and national average scores. In writing, the average AISD student score was greater than the state only (Figures 3, 4, and 5).

Figure 3. SAT Average Scores: Reading

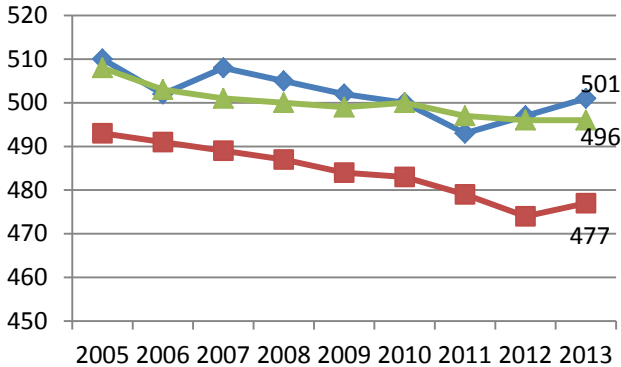


Figure 4. SAT Average Scores: Math

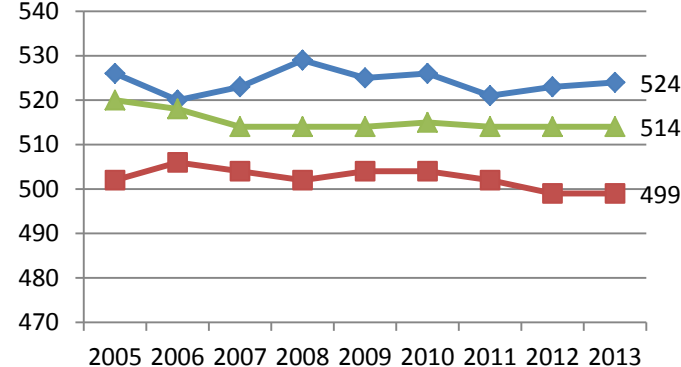
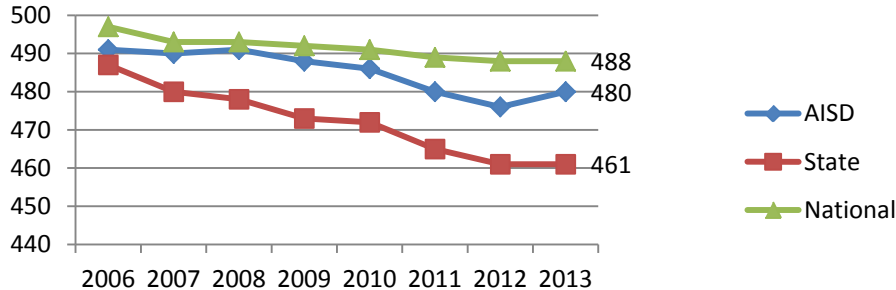


Figure 5. SAT Average Scores: Writing



Source. College Board Profile Report, 2013

Note. Scores for the writing section of the SAT were first reported for the Class of 2006.

Between 2012 and 2013, SAT results for student ethnic/racial groups in reading, math, and writing varied.

Most student ethnic/racial groups were found to have an increase in their average SAT scores in reading (Table 2); average reading scores for Asian and Native American students decreased. The average SAT math scores for African American, Mexican American, Other racial/ethnic groups, or those who did not identify an ethnic/ racial group increased, while the average math scores for Asian, Native American, Puerto Rican, and White students decreased. In writing, average scores for almost all ethnic/racial student groups decreased. Scores across a five-year period showed similar results for student groups by subject area (Table2).

Table 2. SAT Average Scores by Student Group and Subject Area, School Years 2011-2012 and 2012-2013

	Reading			Math			Writing		
	2012	2013	Diff.	2012	2013	Diff.	2012	2013	Diff.
Native American	551	516	-35	553	522	-31	513	492	-21
Asian	538	528	-10	602	595	-7	518	510	-8
African American	416	420	4	439	440	1	397	400	3
Mexican American	444	449	5	478	480	2	426	435	9
Puerto Rican	509	516	7	530	508	-22	530	472	-58
Other Hispanic	438	446	8	466	476	10	466	432	-34
White	571	575	4	590	589	-1	590	550	-40
Other	523	555	32	533	541	8	533	520	-13
No Response	494	490	-4	507	517	10	507	464	-43
All Students	497	501	4	523	524	1	523	480	-43

Source. College Board Profile Report, September 2013

Note. Ethnicity categories provided by the College Board.

Table 3. Five-year Comparison of SAT Average Scores by Student Group and Subject Area

	Reading			Math			Writing		
	2009	2013	Diff.	2009	2013	Diff.	2009	2013	Diff.
Native American	528	516	-12	538	522	-16	496	492	-4
Asian	547	528	-19	605	595	-10	530	510	-20
African American	419	420	1	435	440	5	408	400	-8
Mexican American	448	449	1	475	480	5	439	435	-4
Puerto Rican	480	516	36	499	508	9	490	472	-18
Other Hispanic	444	446	2	463	476	13	434	432	-2
White	571	575	4	594	589	-5	554	550	-4
Other	534	555	21	558	541	-17	517	520	3
No Response	489	490	1	481	517	36	458	464	6
All Students	502	501	-1	526	524	-2	488	480	-8

Source. College Board Profile Report, September 2013

Note. Ethnicity categories provided by the College Board.

The overall average SAT score varied across high school campuses and ranged between a 1960 at LASA and a 1175 at Lanier (Table 4). Compared to the prior year, overall average SAT scores increased in the 2012-2013 school year for students attending Austin, Bowie, Eastside, Garza, LASA, LBJ, McCallum, Reagan and Travis and the overall average SAT scores decreased at Akins, Anderson, Crockett, and Lanier.

The top three intended college majors identified by AISD SAT test-takers were biological sciences (e.g., agriculture or health professions), social sciences (e.g., education, public affairs, history), and physical sciences (e.g., engineering, math, computer sciences). The top five institutions receiving SAT score reports from AISD

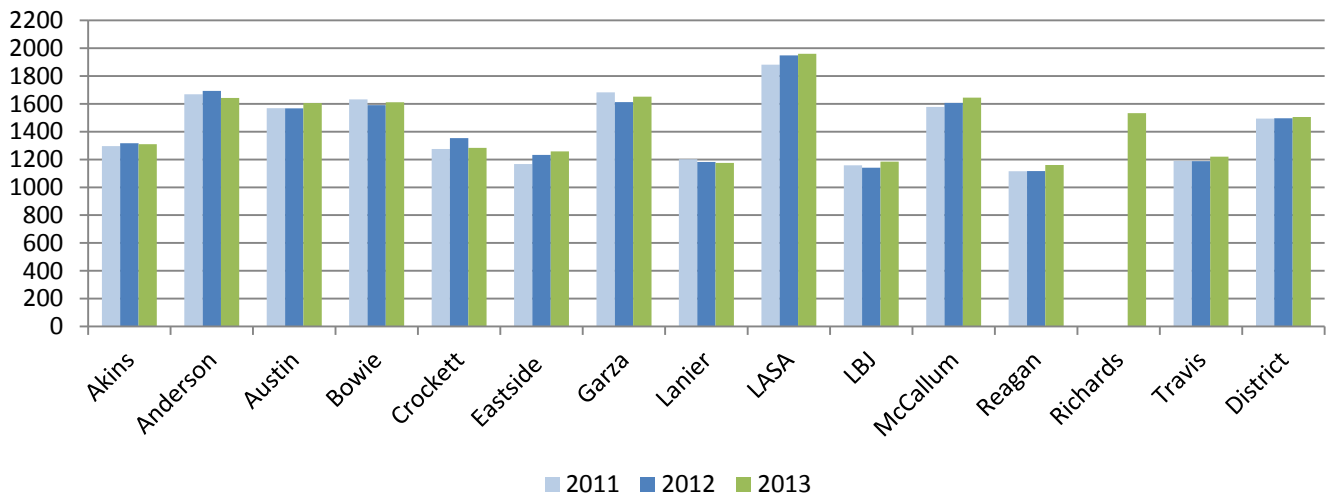
students were Texas State University in San Marcos, the University of Texas at Austin, the University of Texas in San Antonio, Texas A&M University in College Station and Baylor University.

Table 4. SAT Campus, District, State, and National Average Scores, 2012-2013

School	Number Tested	Reading	Math	Writing	Total
Akins	312	437	455	418	1310
Anderson	296	542	572	528	1642
Austin	330	538	553	514	1605
Bowie	525	534	567	510	1611
Crockett	168	426	440	418	1284
Eastside Memorial	34	418	444	396	1258
Garza	35	563	552	536	1651
Lanier	171	380	423	372	1175
LASA	219	663	668	629	1960
LBJ	104	393	426	366	1185
McCallum	231	555	565	525	1645
Reagan	110	369	423	368	1160
Richards	50	500	530	503	1533
Travis	113	403	431	386	1220
AISD	2,698	501	524	480	1505
State	172,870	477	499	461	1437
National	1,660,047	496	514	488	1498

Source. College Board Profile Report, 2013

Figure 7. SAT Average Scores by School, 2011, 2012, and 2013



Source. College Board Profile Report, 2012

Reference

College Board (2012, September). *College-bound seniors district profile report for Austin Independent School District (AISD)*, College Board.