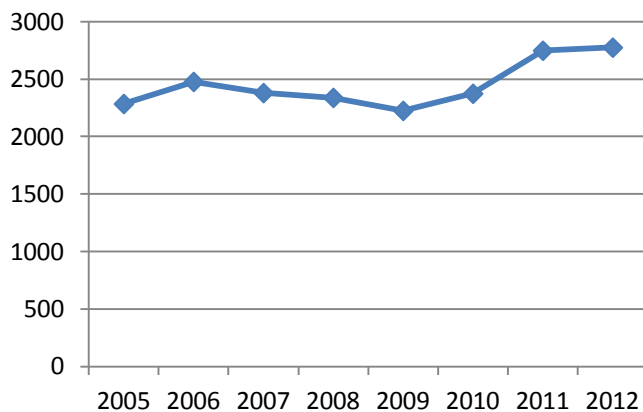


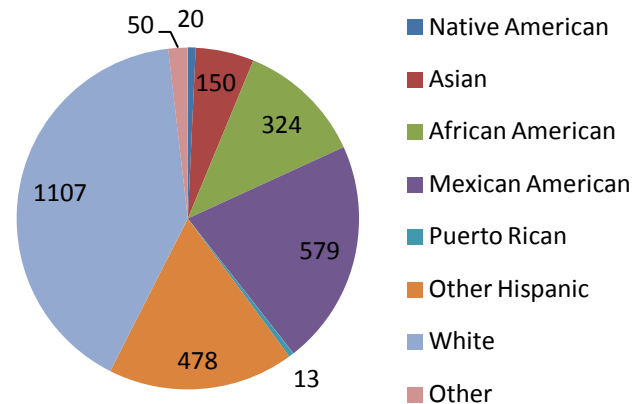
**About the SAT.** The SAT is an assessment of critical reading, mathematical reasoning, and writing skills created and administered through the College Board. The SAT score range is 200 to 800 points for each of the three subtests. A perfect SAT score is 2400. Students generally take the SAT during their junior or senior year of high school, and many colleges and universities use the SAT to make admission decisions. The College Board provides an annual summary of student performance at the end of each academic year. Results from the annual summary are described in this brief.

**AISD student participation in SAT testing remained steady in 2012 (n=2,774), compared to participation in 2011 (n=2,747).** However, an increase in the 2012 SAT test participation was found for students who categorized themselves as Mexican/Mexican American (+77), Other (+11), or did not identify their race/ethnicity (+10) in 2012 (Figures 1 and 2).

**Figure 1. Number of AISD Students Taking the SAT**



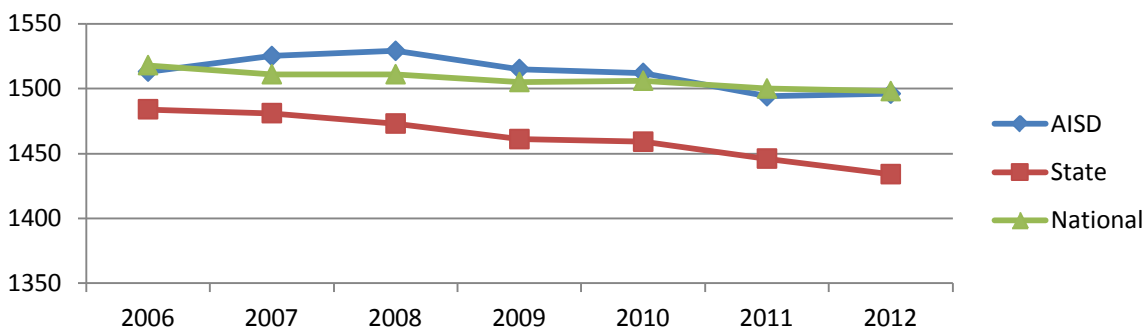
**Figure 2. Number of AISD Students Taking the SAT**



Source. College Board Profile Report, 2012

**The 2012 overall average SAT score for AISD students (1496) was greater than the state average score (1434) and comparable to the national SAT average score (1498).** Overall, the district's average SAT score remained about the same between 2011 and 2012, and continued to be lower than the district's average score 5 years ago. Similarly, the 2012 average SAT scores at the state and national levels have decreased, compared with average scores last year and from 5 years ago.

**Figure 3. AISD, State, and National Overall Average SAT Scores, 2006-2012**



Source. College Board Profile Report, 2012.

## SAT Test Results, 2011-2012

Compared with the year prior, the 2012 average SAT scores in each subject areas remained about the same in 2012, with slight increases in reading and math and a slight decrease in writing (Figures 4, 5 and 6). National SAT scores in each subject area remained about the same. Between 2011 and 2012, state scores fell slightly in each subject area. However, AISD students' average scores in each subject area were above that of the state in 2012. AISD students' average score in reading was similar to the national average score in reading, above the nation average score in math, and below the national average score in writing.

Figure 4. SAT Average Scores: Critical Reading

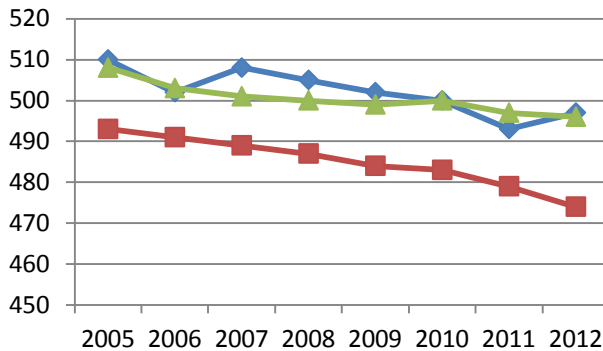
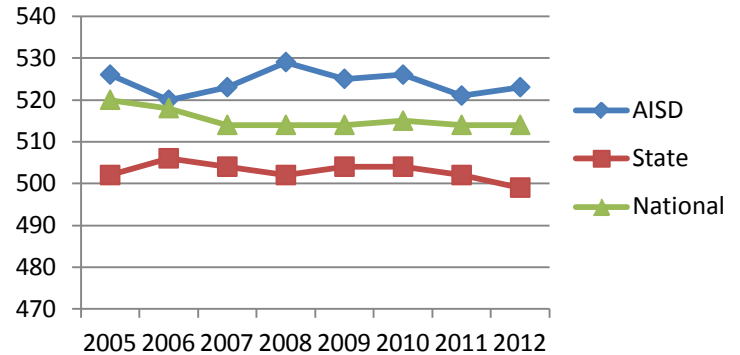
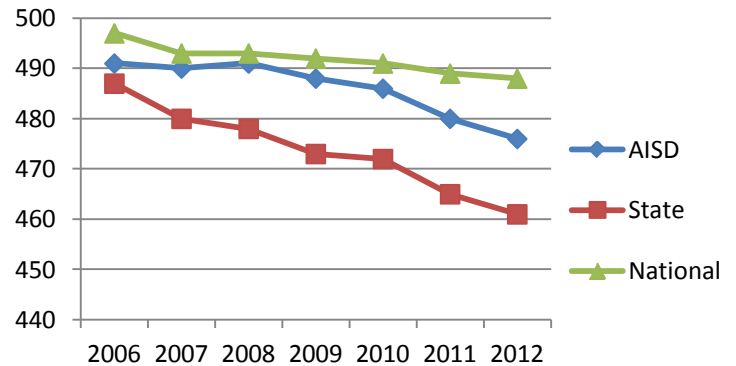


Figure 5. SAT Average Scores: Math



Between 2011 and 2012, all student ethnic/racial groups were found to have an increase in their average SAT scores in writing (Table 1). The overall average SAT score also increased for Native American, Asian, Mexican/Mexican American, and Other students in both reading and math. Average SAT scores remained about the same for White students in reading and math. Decreases in average SAT scores were found for students who did not identify their ethnicity/race category in reading and math. Native American students experienced a decrease in their average math score between 2011 and 2012.

Figure 6. SAT Average Scores: Writing



Source. College Board Profile Report, 2012

Table 1. SAT Average Scores by Subject Area, 2011 and 2012

	Critical Reading			Math			Writing		
	2011	2012	Diff.	2011	2012	Diff.	2011	2012	Diff.
Native American	512	551	39	572	553	-19	504	513	9
Asian	514	538	24	585	602	17	512	518	6
African American	408	416	8	427	439	12	390	397	7
Mexican American	433	444	11	468	478	10	422	426	4
Puerto Rican	467	509	42	475	530	55	426	530	104
Other Hispanic	438	438	0	465	466	1	426	466	40
White	571	571	0	591	590	-1	554	590	36
Other	492	523	31	526	533	7	482	533	51
No Response	515	494	-21	517	507	-10	492	507	15
All Students	493	497	4	521	523	2	480	523	43

## SAT Test Results, 2011-2012

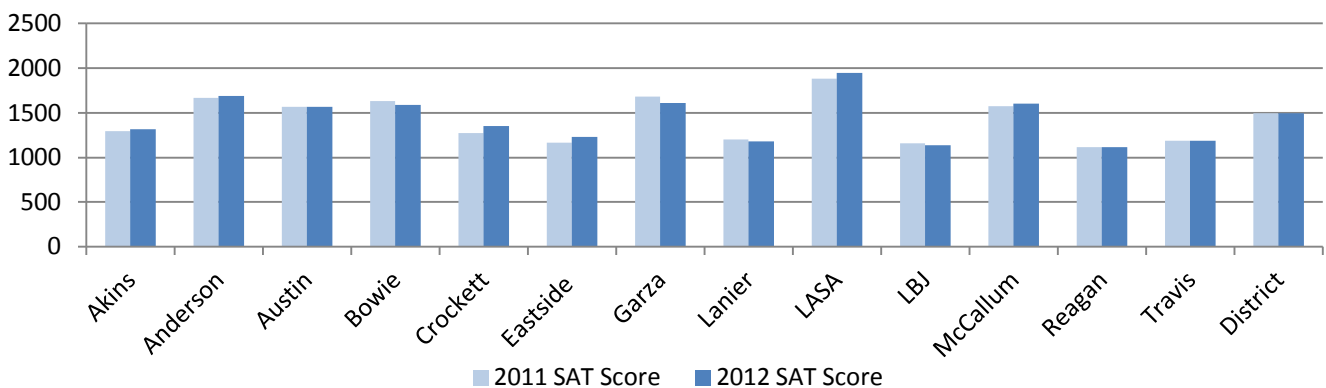
**SAT test performance by campus varied widely across the district with scores ranging between 1948 at LASA High School and 1117 at Reagan High School (Table 3).** Between 2011 and 2012, average SAT scores remained about the same for most schools (Figure 7). The SAT Benchmark score of 1550 or higher has been determined to predict a high likelihood of college success and completion (College Board, 2012). The following institutions received the most SAT score reports from AISD students and are listed in order: Texas State University, University of Texas at Austin, University of Texas at San Antonio, Texas A&M University at College Station, and Texas Tech University in Lubbock.

**Table 3. SAT Campus, District, State, and National Average Scores, 2012**

School	Number Tested	Critical Reading	Math	Writing	Total
Akins	318	431	464	422	1317
Anderson	357	565	589	539	1693
Austin	356	522	548	498	1568
Bowie	555	524	563	503	1590
Crockett	172	452	471	431	1354
Eastside: Global Tech	8	391	413	375	1179
Eastside Memorial	32	400	442	391	1233
Garza	32	566	532	514	1612
Lanier	178	388	424	370	1182
LASA	186	658	659	631	1948
LBJ	113	375	404	362	1141
McCallum	238	539	553	515	1607
Reagan	81	367	399	351	1117
Richards	5	548	518	534	1600
Travis	143	392	420	376	1188
<b>AISD</b>	<b>2,774</b>	<b>497</b>	<b>523</b>	<b>476</b>	<b>1496</b>
<b>State</b>	<b>172,802</b>	<b>474</b>	<b>499</b>	<b>461</b>	<b>1434</b>
<b>National</b>	<b>1,664,479</b>	<b>496</b>	<b>514</b>	<b>488</b>	<b>1498</b>

Source. College Board Profile Report, 2012

**Figure 7. SAT Average Scores by School, 2011 and 2012**



Source. College Board Profile Report, 2012

### Reference

College Board (2012, September). *College-bound seniors district profile report for Austin Independent School District (AISD)*, College Board.