

AISD Repurposing Conversations

Rosedale Update (September 15, 2022)

Scenario A



18



What do you like best about this option?

- No comments

*What **don't** you like about this option?*

- Least ideal use of the site as minimal new housing
- Building is old, and reuse requires major renovations
- Would like to see the entire space be green space / park

Scenario B



19



What do you like best about this option?

- Like this as a way to maximize housing while retaining nature of neighborhood and trying to minimize traffic impact
 - Seconded, max benefit of land without over saturating
 - Third
 - Feels like the best compromise
- Doesn't "degrade" the neighborhood

*What **don't** you like about this option?*

- Seems a bit dense relative to Rosedale neighborhood
 - Could see a mix of lot types - some single, some doubles - and design variability
- Concern about it looking like track housing

Scenario C



20



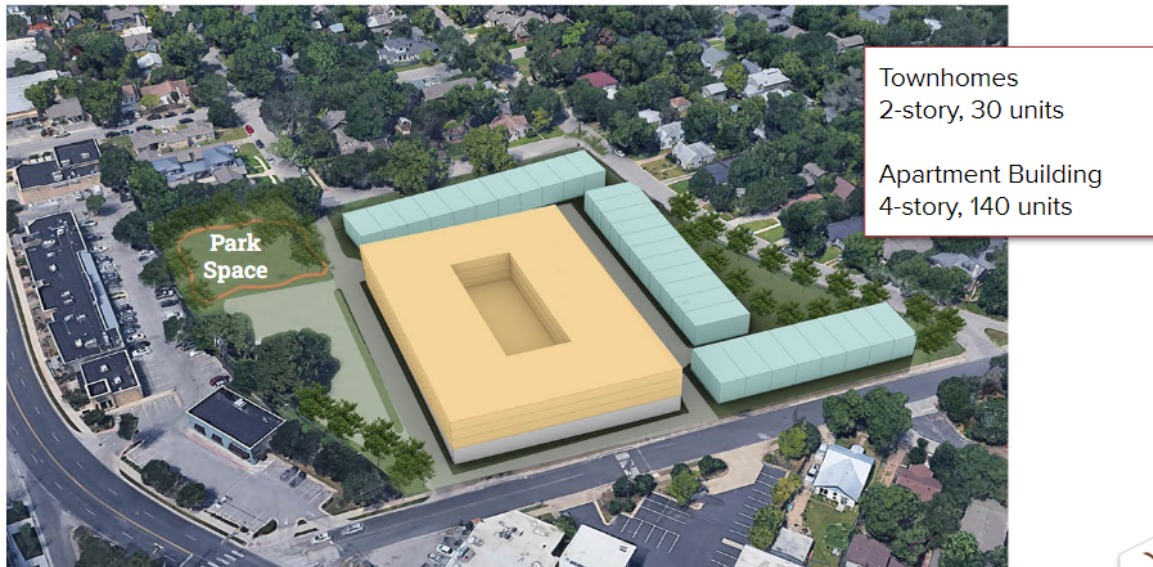
What do you like best about this option?

- No comments

*What **don't** you like about this option?*

- Anticipate pushback with this scenario
 - Concerns this will flood the neighborhood with traffic
 - Detriment to the look and feel of the neighborhood
 - Impact on surrounding property values / “degradation”
- The Grove is on the other side and this could box it in
- Want to make sure it is a thoughtful development to ensure people want to live here
- Too much structure, not enough pervious coverage, too much traffic.
- Individual against all of it

Scenario D



21



What do you like best about this option?

- No comments

*What **don't** you like about this option?*

- Anticipate pushback with this scenario
 - Concerns this will flood the neighborhood with traffic
 - Detriment to the look and feel of the neighborhood
- Too much structure, not enough pervious coverage, too much traffic.

What other uses would you like to see?

- Just green space
- Against all development