

Educational Suitability Summary Report

Summitt Elementary School

Date: 10/29/2020

Score 56% Average

Summitt Elementary School serves an enrollment of approximately 760 students* in north Austin and was originally built in 1986. A detached building, referred to as “the annex,” was built in 1989. Together these buildings total 76,000 square feet. The school provides multiple programs, has a large Vietnamese student enrollment and participates in a German exchange program. The school focuses on world languages as part of the Anderson family of schools, and at each grade level, students are exposed to Spanish, German, French, Chinese and Latin. The school also has a robotics program, and mentors are employees from National Instruments.

The building is 35 years old and has some challenges in meeting the current Educational Specifications. Some of the learning neighborhoods function around an open collaboration space, but many studios are in portables and do not have access to collaboration space. Music and art studios are unsatisfactory, and the cafeteria is undersized for the campus capacity. In general, the finishes, paint colors, and lighting are dated and do not evoke the cheerful atmosphere of an elementary school.

*In a typical (non-Covid) school year, the enrollment has been higher around 840 students for the past three years.

Interview Overview

The interview was conducted with the Principal Ariel Greco and several staff members. Staff noted multiple programs that are not in suitable spaces, including special education and the computer lab. The computer lab is between the special education studio and its restrooms, cutting off direct access. Privacy between these rooms is a concern with the ease of sound transmission. [REDACTED]

The music studio is in a portable and does not have sufficient storage, which makes it difficult to transport equipment and instruments to and from the stage in the cafeteria, especially during inclement weather. There are two art studios; one is cluttered due to a lack of storage and the other is a typical studio being used as an art room. Most learning neighborhood wings have a common pod space, but third- and fourth-grade studios are in portables. While this assessment does not cover the portables, it is assumed spaces in portables will be found deficient.

The campus overall lacks space to accommodate groups and after-school programs. Programs that share the cafeteria include martial arts, the dragon dance program and Extend-A-Care. The campus lacks a designated community space. The mature trees are considered an asset to the campus.

The campus is over capacity, continues to grow and has a consistent level of student enrollment on a

Educational Suitability Summary Report
Summitt Elementary School

Perkins&Will

free or reduced lunch program. The staff desires programs that would benefit refugee, immigrant and low-income students, such as a clothes closet, mental health clinic and Communities in Schools.

Staff has functioned as well as possible with the current work room and lounge spaces. However, the teacher work and lounge areas have reached capacity, leading to issues such as microwaves tripping the breakers. One solution mentioned by staff was creating multiple staff work and/or lounge areas.

Assessment Findings

The Educational Suitability Assessment of Summit Elementary earned a 56% overall score and places the campus in a category of average. The assessment consists of seven General Building categories and seven Academic categories to determine areas that need more attention.

Unsatisfactory Categories (36-50%):**Academics & Learning**

Score is unsatisfactory.

Studios are adequate in size but lack sufficient support spaces for storage. Typical learning neighborhoods have open collaboration space, but no small group rooms. Maker space is in an open collaboration space. The campus lacks dedicated professional learning centers. Music, third- and fourth-grade are taught in portables. There are two art rooms; one is a typical studio and lacks storage. Special education studio is not configured appropriately per the Ed Spec; bathrooms are not connected. Overall storage is lacking in multiple spaces.

PE and Wellness

Score is unsatisfactory.

Gym is adequately sized, but the support spaces for the gym such as storage are inadequate.

Food Services

Score is unsatisfactory.

The cafeteria is undersized for the campus capacity; however, the space is in good condition and is well maintained. The kitchen and serving area is also undersized.

Administration Spaces

Score is unsatisfactory.

Reception/front desk has minimal seating for waiting area and is not very inviting. [REDACTED]
[REDACTED] There is sound transmission between spaces. The one small conference room is not easily accessible and has no natural light access.

Average Categories (51-65%):**Exterior**

Score is average.

Traffic flow is not ideal with short vehicle stack spaces. Traffic backs up onto streets. Signage is not apparent for wayfinding. The dumpsters are located near the cafeteria but are not accessible due to steps required to get to their location.

General Building

Score is average.

Interior circulation is wide enough to safely accommodate students. Only the cafeteria and gym are arranged to be accessible for functions without accessing through the school. The library is insular into the building and can only be accessed by entering the main building. The campus lacks a dedicated community room.

Security

Score is average.



Environmental Quality

Score is average.

Most studios and learning spaces have access to natural light. Light levels are acceptable with amount of natural and electrical lighting. Views to the outside are limited due to high windows above millwork in typical studios. Strong odor noticed in the gym storage and a rodent trap was found in the kitchen storage.

Controllability of Systems

Score is average.

Most studios have individual thermostats and only one light switch per room. Blinds are present in rooms to control sunlight and appear in good condition.

Furniture, Fixtures, Equipment

Score is average.

Mix of old and new furniture. Some variety of furniture only in library. New furniture is capable of reconfiguring easily. Most furniture is ergonomic and size appropriate for grade level.

Visual and Performing arts

Score is average.

The stage is adequate, but currently music is held in a portable. There are two art rooms. One is an art studio but does not have adequate storage. The other art room is being held in a typical studio.

Technology

Score is average.

Learnings spaces have sufficient number of electrical outlets to connect devices. There is no digital media signage at the reception area and the gym and cafeteria lacks A/V equipment.

Satisfactory Categories (66-80%):

Media Resources

Score is satisfactory.

Media center supports social interaction with variety of furniture and some areas for both small and large collaboration. Technology in the library is current with two large flat panel displays. Library has

sufficient transparency to views out into corridors but is not easily found for visitors.

Outdoor Learning and Activity

Score is satisfactory.

Exterior learning space is available but not well configured per Ed Spec. Playgrounds are good size and in good condition with new equipment and covered playscapes. Garden spaces need updates to function well. Need age-appropriate furniture to hold class outdoors.

Supporting Photographs



An outdoor learning area is located near the annex building, but for most studios in the main building and in the portables, this location is disconnected from the learning spaces.



Outdoor areas lack adequate age-appropriate furniture.

Supporting Photographs



Active playgrounds are equipped with shade covering.



Active playgrounds are in good condition and suitable for a variety of ages.

Educational Suitability Summary Report
Summitt Elementary School

Supporting Photographs



The corridors have areas for displays and highlights school price.



Main hallway is generous width, but lighting is poor, making hallway feel dark and dated.

Supporting Photographs



Access to natural light and adequate lighting in typical studio.

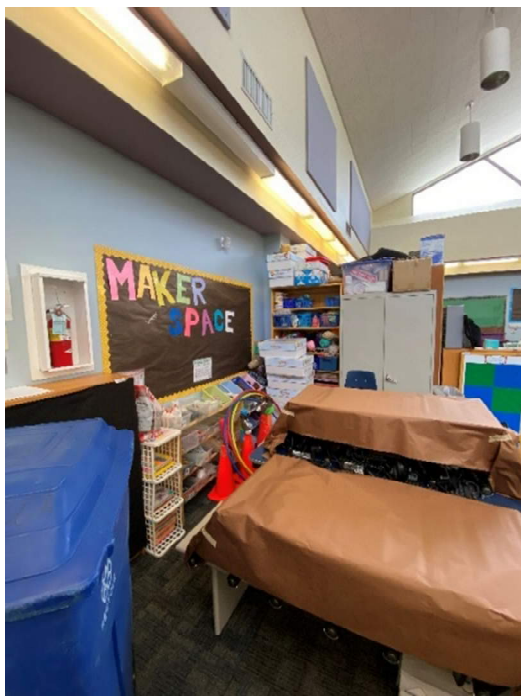


Cafeteria is undersized for campus capacity and only one type of seating is provided. Stage is adequately sized with a ramp provided for accessibility.

Supporting Photographs

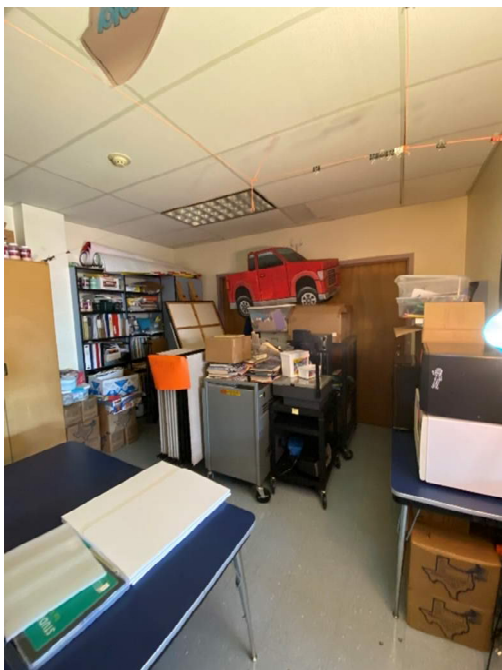


Learning neighborhood with large collaboration space. It has limited storage and limited furniture for different types of activities.



Area within collaboration space is currently set up as a maker space.

Supporting Photographs



Art spaces with lack of storage and appropriate support spaces.



Studio being used as an art room. Does not have enough square footage per Educational Specifications or appropriate support spaces.



Austin ISD Educational Suitability Assessment Criteria

General Building

School Name

Summit Elementary School

Walk Attendees:

Patrick Reinhard & Anacleto Rojas Jr.

Date:

10.21.2020

1 - Exterior		1	2	3	4	5	N/A	8.75	60%	
1.1	Does the site permit desirable separation of vehicular, bus and pedestrian traffic?			3				Comments	1.00	3.00
	1 Very unsatisfactory - Bus, car and pedestrian all happen at the same location							Bus and vehicular circulation are separated. Stack space is short for vehicles and often backs up onto busy road.		
	2 Unsatisfactory - Cars and buses mix, pedestrians are separated									
	3 Average - Buses, cars, and pedestrians are separate but stack space is small									
	4 Satisfactory - Buses, cars, and pedestrians are separate but drop off does not have a canopy or a holding place like a commons or cafeteria									
	5 Very satisfactory - Buses, cars, and pedestrians are separate and drop off area has a canopy and destination									
	N/A Does not apply									
1.2	Is the building easily identified with appropriate signage and community wayfinding?			3				Comments	0.25	0.75
	1 Very unsatisfactory - Campus has no signage / wayfinding							Signage is visible but too small and not apparent for wayfinding.		
	2 Unsatisfactory - Signage/wayfinding is faded/hidden									
	3 Average - Signage / wayfinding visible but not apparent									
	4 Satisfactory - Signage / wayfinding is visible but not good condition									
	5 Very satisfactory - Signage and wayfinding is visible and easy to use									
	N/A Does not apply									

1 - Exterior (cont.)		1	2	3	4	5	N/A			
1.3	Is the dumpster accessible for trash / compost disposal?			3				Comments	0.50	1.50
1	Very unsatisfactory - No compost present, route has obstacles (stairs, curbs, barriers) to dumpster							Dumpsters are close to cafeteria but must walk down stairs to access from loading dock.		
2	Unsatisfactory - Compost is present. Route has obstacles to dumpster									
3	Average - Compost is present (<100' to cafeteria), Route to dumpster is free and clear but the two are not directly adjacent.									
4	Satisfactory - Compost and dumpster are directly adjacent and route is barrier free									
5	Very Satisfactory - Compost and dumpster are directly adjacent and route is barrier free. Dumpster are shaped / positioned so people of all heights can access it.									
N/A	Does not apply									
2 - Outdoor Learning and Activity		1	2	3	4	5	N/A	15.00	80%	
2.1	Are outdoor studios and support spaces appropriately configured per the ed spec?			3				Comments	1.00	3.00
1	Very unsatisfactory - No dedicated outdoor studios							One small outdoor space with a picnic table has shade/covering. Other outdoor spaces only have some coverage with trees. Furniture needs updating and spaces need updates to function well.		
2	Unsatisfactory - Too small, poor condition, disconnected from learning spaces, no flexibility, no shade provided									
3	Average - Adequate size, adequate condition, needs some renovations or updates to function well, 50% or less shade coverage over studio area									
4	Satisfactory - Good size, good condition, connected to learning spaces, good flexibility, more than 50% shade coverage over studio area									
5	Very satisfactory - Generous size, excellent condition, connected to learning spaces, excellent flexibility, full shade coverage over studio area									
N/A	Does not apply									
2.2	Are active playgrounds (elementary only) and support spaces configured per the ed spec?				4			Comments	1.00	4.00
1	Very unsatisfactory - No dedicated active playground							Playgrounds in good condition. Two of the three playgrounds equipped with shade structure.		
2	Unsatisfactory - Too small, poor condition, no shade provided									
3	Average - Adequate size, adequate condition, needs some renovations or updates to function well, 50% or less shade coverage over play structure									
4	Satisfactory - Good size, good condition, more than 50% shade coverage over play structure									
5	Very satisfactory - Generous size, excellent condition, full shade coverage over play structure									
N/A	Does not apply									

2 - Outdoor Learning and Activity (cont)		1	2	3	4	5	N/A				
2.3	Are gardens and support spaces appropriately configured per the ed spec? (evaluation on infrastructure not condition of plants)			3					Comments	0.00	0.00
1	Very unsatisfactory - No dedicated gardens							Monitoring answer, does not affect score for Outdoor Learning and Activity.			
2	Unsatisfactory - Too small, poor condition, disconnected from learning spaces, no flexibility, no accessible water source										
3	Average - Adequate size, adequate condition, needs some renovations or updates to function well, water source is difficult to access										
4	Satisfactory - Good size, good condition, connected to learning spaces, good flexibility, water source is accessible with 100 ft hose										
5	Very Satisfactory - Generous size, excellent condition, connected to learning spaces, excellent flexibility, water source is less than 50ft from the garden or has irrigation										
N/A	Does not apply										
2.4	Are the rain gardens and/or cisterns appropriately configured per the ed spec?	1							Comments	0.00	0.00
1	Very unsatisfactory - No rain gardens or cisterns							Monitoring answer, does not affect score for Outdoor Learning and Activity.			
2	Unsatisfactory - Too small, poor condition, not functioning, disconnected										
3	Average - Adequate size, adequate condition, is connected, needs some renovations or updates to function well										
4	Satisfactory - Good size, good condition, functions properly										
5	Very Satisfactory - Generous size, excellent condition, exceptional functionality, connected to learning spaces, educational signage provided										
N/A	Does not apply										
2.5	Does the school have animal husbandry? (optional)	1							Comments	0.00	0.00
1	No										
5	Yes										
2.6	Does the school have nature loop trails? (optional)	1							Comments	0.00	0.00
1	No										
5	Yes										
2.7	Does the school have a learning pond? (optional)	1							Comments	0.00	0.00
1	No										
5	Yes										
2.8	Does the school have a grass play field and walking trail?				5				Comments	1.00	5.00
1	No										
5	Yes										

3 - General Building		1	2	3	4	5	N/A	11.25	53%	
3.1	Are interior circulation routes wide enough to safely and effectively accommodate student movement?				4			Comments	0.50 2.00	
1	Very unsatisfactory - Primary circulation is 5'-0" to 6'-0" wide	Main entry corridor is more than 10'-0" in width and others are 8'-0" to 10'-0".								
2	Unsatisfactory - Primary circulation is 6'-0" to 7'-0" wide									
3	Average - Primary circulation is 7'-0" to 8'-0" wide									
4	Satisfactory - Primary circulation is 8'-0"-10'-0" wide									
5	Very satisfactory - Primary circulation is 10'-0"+ wide									
N/A	Does not apply									
3.2	Are community use areas arranged so that the school can allow night functions without full school access?			3				Comments	0.75 2.25	
1	Very unsatisfactory - Cafeteria, gym, and library cannot be accessed after hours	Gym and cafeteria are accessible from parking and can be secured from rest of school after hours. The library requires access into the building and passage through the main corridor or corridors near learning neighborhoods.								
2	Unsatisfactory - Only one of the public spaces (Cafeteria, Gym and Library) can be accessed from parking and secured after hours									
3	Average - Only two of the public spaces can be accessed from parking and secured after hours									
4	Satisfactory - All of the public spaces can be accessed from parking and secured from the rest of the building but not individually									
5	Very satisfactory - Cafeteria, gym, and library can be accessed from parking and locked off from rest of campus for night/evening use with their own entrance									
N/A	Does not apply									
3.3	Is there a community room that is a dedicated meeting space outside of school function?	1						Comments	0.75 0.75	
1	Very unsatisfactory - No dedicated community room	There is a very small conference room within the administrative part of the building with no transparency or any windows for views. There is no dedicated community room.								
2	Unsatisfactory - Community room but within school function, no access after school hours									
3	Average - Community room, moderate size, but need some renovations or updates to function well									
4	Satisfactory - Community room, good size /layout, meets needs /functions well									
5	Very Satisfactory - Community room, generous size, nice condition, functions appropriately outside of school function									
N/A	Does not apply									
3.4	Does the general appearance of the school convey pride for the students and community?				4			Comments	0.25 1.00	
1	Very unsatisfactory - General appearance is poor	Multiple locations for display of student work on the campus.								
2	Unsatisfactory - General appearance is aged but ok									
3	Average - General appearance is good									
4	Satisfactory - General appearance shows pride in campus and student works									
5	Very satisfactory - General appearance shows pride in campus and student works and is welcoming to the community									
N/A	Does not apply									

4 - Security		1	2	3	4	5	N/A	16.25	
4.1	Does the facility have key card access at all major entries?								
	1 Very unsatisfactory - No entries							0.25	
	2 Unsatisfactory - 1/4 of major entries								
	3 Average - 1/2 of major entries								
	4 Satisfactory - 3/4 of major entries								
	5 Very satisfactory - All of major entries								
	N/A Does not apply								
4.2	How adequate is site lighting and security for the campus overall?								
	1 Very unsatisfactory - No exterior lighting, no secure perimeter							1.00	
	2 Unsatisfactory - Lighting is limited to front entry only, parking lot lighting poor, security is minimal								
	3 Average - Lighting at all night-use entries and parking lot, but poor condition. Security is moderate								
	4 Satisfactory - Lighting at all night-use entries and parking lots, good condition, signage less visible, perimeter is well secured but needs updates								
	5 Very satisfactory - Signage, parking lots, and entries are well lit, visible and easy to use, perimeter is very secure								
	N/A Does not apply								
4.3	Is the main office located at the school entry and configured with a secure vestibule to the main corridor?								
	1 Very unsatisfactory - No secure vestibule, office located far from main entry, allows visitors access to school unsupervised							1.00	
	2 Unsatisfactory - No secure vestibule, office located somewhat far from main entry, minimal supervision of visitors								
	3 Average - Office close to entry, views of front door, but no secure vestibule								
	4 Satisfactory - Office is well-located with a secure vestibule, but needs updates								
	5 Very satisfactory - Office well-located with secure vestibule and all appropriate security features								
	N/A Does not apply								
4.4	Is there enough interior transparency for faculty to passively supervise learners and their activities who are not in studios?			3					
	1 Very unsatisfactory - No transparency of walls							1.00	3.00
	2 Unsatisfactory - Limited transparency in certain locations								
	3 Average - Good transparency in certain locations but inadequate or missing in other locations of school								
	4 Satisfactory - Adequate transparency throughout the school								
	5 Very satisfactory - Excellent transparency throughout the school								
	N/A Does not apply								

Comments: Within some of the learning neighborhoods, doors with half glass and side windows allow some transparency into the shared common space.

5 - Environmental Quality		1	2	3	4	5	N/A	25.00	52%
5.1	How are acoustics in studios in general?		2					Comments	1.00 2.00
1	Very unsatisfactory - Recognized word/sound from adjacent studio/corridor							Sound is audible from adjacent studio and corridor.	
2	Unsatisfactory - Audible sound from adjacent studio/corridor								
3	Average - Slight sound from outside room								
4	Satisfactory - Walls to deck insulated only white noise from mechanical system								
5	Very satisfactory - Able to hear quiet speaking from across the room								
N/A	Does not apply								
5.2	Is the studio artificial lighting adequate quality?			3				Comments	1.00 3.00
1	Very unsatisfactory - Sporadic lights work, glare, less than 20 FC							Artificial lighting provides minor glare in studios.	
2	Unsatisfactory - 10-19 FC or serious glare								
3	Average- 20-29 FC minor glare								
4	Satisfactory - 30-39 FC and no glare								
5	Very satisfactory - 40+ FC and no glare								
N/A	Does not apply								
5.3	Is there access to natural light in studios?				4			Comments	1.00 4.00
1	Very unsatisfactory - No learning spaces have natural light							Most studios have access to natural light. Only a few that do not have windows.	
2	Unsatisfactory - 1-25% of learning spaces have natural light or windows are too small to let in light								
3	Average - 26-50% of learning spaces have natural light								
4	Satisfactory - 51-75% of learning spaces have natural light								
5	Very satisfactory - 76-100% of learning spaces have natural light								
N/A	Does not apply								
5.4	Is there access to outside views from learning spaces?		2					Comments	1.00 2.00
1	Very unsatisfactory - No learning spaces have views							Most studios have taller windows and do not have views.	
2	Unsatisfactory - 1-25% of learning spaces have views or windows are too small to see out								
3	Average - 26-50% of learning spaces have views								
4	Satisfactory - 51-75% of learning spaces have views								
5	Very satisfactory - 76-100% of learning spaces have views								
N/A	Does not apply								

5 - Environmental Quality (cont.)		1	2	3	4	5	N/A				
5.5	Does the building have odor or pest problems?		2					Comments	1.00	2.00	
1	Very unsatisfactory - Evidence of both pests and odors							Observed rat trap in kitchen storage area.			
2	Unsatisfactory - Evidence of pests or odors										
3	Average - Limited evidence of pests, no odors										
4	Satisfactory - No evidence of pests / odors, school cleanliness in good condition										
5	Very Satisfactory - No evidence, school cleanliness in excellent condition										
N/A	Does not apply										
6 - Controllability of Systems		1	2	3	4	5	N/A		12.50	60%	
6.1	Does the studio thermostat allow for individual control?					5		Comments	0.50	2.50	
1	No										
5	Yes										
6.2	Are shades provided to control natural light in learning spaces?				4			Comments	1.00	4.00	
1	Very unsatisfactory - No, windows are covered with boards/paper							All studios have functioning blinds in good condition.			
2	Unsatisfactory - No, windows have no light control										
3	Average - Yes, but poor condition blinds										
4	Satisfactory - Yes, blinds										
5	Very satisfactory - Blackout shades										
N/A	Does not apply										
6.3	What is the quality of lighting controls in the studios?	1						Comments	1.00	1.00	
1	Very unsatisfactory - Single switch only per room							Studios only have a single switch for lighting controls.			
2	Unsatisfactory - Alternating rows switch off										
3	Average - Alternating lamps in single fixtures switch off										
4	Satisfactory - Tri level switching										
5	Very satisfactory - Dimmable										
N/A	Does not apply										

7 - Furniture, Fixtures & Equipment		1	2	3	4	5	N/A	18.75	64%	
7.1	What is the current condition of the furniture?				4			0.75	3.00	
1	Very unsatisfactory - Damaged or broken, non-functioning	Furniture is not new, but is in good condition.								
2	Unsatisfactory - Torn/ bent/ wrong size									
3	Average - Scratched/dented/marked									
4	Satisfactory - Not new, but sturdy and clean									
5	Very satisfactory - New									
N/A	Does not apply									
7.2	Are a variety of furniture types being accommodated throughout the school - learning commons, dining commons, other multi-use spaces?		2					1.00	2.00	
1	Very Unsatisfactory - Same furniture used in all spaces	Variety of furniture only observed in the library.								
2	Unsatisfactory - Furniture variety in one multi-use space									
3	Average - Furniture variety in more than one multi-use space									
4	Satisfactory - All multi-use spaces have greater than one type of furniture									
5	Very satisfactory - All multi-use spaces have greater than two types of furniture									
N/A	Does not apply									
7.3	How well does furniture accommodate rapid reconfiguration of a space?			3				1.00	3.00	
1	Very Unsatisfactory - Furniture is fixed or very heavy	Studios not consistent with furniture. Some studios have larger tables with loose chairs that are not as easily reconfigured as some other studios.								
2	Unsatisfactory - Furniture does not allow desks to be configured as individuals, small groups, or large groups									
3	Average - Mix of furniture that can reconfigure but is cumbersome to move									
4	Satisfactory - Furniture is flexible for multiple configurations of space									
5	Very satisfactory - Furniture is flexible for multiple configurations of space, easy to move and stack									
N/A	Does not apply									
7.4	Is the furniture ergonomic and size appropriate for grade level?				4			1.00	4.00	
1	Very unsatisfactory - Desk with attached chair combinations too small for grade level	Studios equipped with tables and loose chairs and size appropriate.								
2	Unsatisfactory - Desk with attached chair combinations									
3	Average - Mix of studios with tables/loose chairs and desks with fixed seats									
4	Very satisfactory - Tables with loose chairs									
5	Very satisfactory - Tables with loose chairs that allow students to be active									
N/A	Does not apply									
								92.50		

Zero Waste		1	2	3	4	5	N/A	5.00	40%	
Do studios and corridors have blue recycle bins with bilingual instructions and/or image sorting instructions?			2					0.50	1.00	
1	Very unsatisfactory - There are no recycling and landfill bins and signage are sparse or infrequent. OR there are only landfill bins with no recycling bins.	<p>A score for this category is being recorded, but this category is not calculated in the overall ESA average.</p> <p>Observed bins in some studios, but not in corridors. Signage was lacking for the bins in the studios.</p>								
2	Unsatisfactory - Bins and signage are sparse or infrequent and/or lack clear signage.									
3	Average - 50% of corridors and studios have both a landfill bin and a recycle bin in an accessible location. The containers have clear signage.									
4	Satisfactory - 75% of studios and corridors have a visible landfill and recycle collection containers in an accessible location. The containers have clear signage.									
5	Very satisfactory - All studios / corridors (100%) have visible landfill and recycle collection containers in accessible locations. The containers have clear signage, and the style and format is consistent and uniform across campus.									
N/A	Does not apply									
Does the cafeteria (or wherever meals are served) have at least one of each: green compost bin, blue recycle bin, and landfill bin? Are the bins labelled clearly with bilingual and/or image sorting?			2					0.50	1.00	
1	Very unsatisfactory- There may be landfill bins, but there are no compost and/or recycle bins. There is not clear sorting signage.	<p>Observed only one location in cafeteria, but lacking signage.</p>								
2	Unsatisfactory- Recycle, landfill, and compost bins are present, but the bins are scattered and no co-located next to one another. Signage is absent or inconsistent.									
3	Average- There is at least one waste station with all three bins (recycle, compost, landfill) located with close proximity to one another. The signage is visible and consistent.									
4	Satisfactory- There are several waste stations as described above									
5	Very Satisfactory - There are several waste stations as described above, and additional signage in the cafeteria that encourages recycling/composting.									
N/A	Does not apply									



Austin ISD Educational Suitability Assessment Criteria

Academics - Elementary School

School Name

Summitt Elementary School

Walk Attendees:

Patrick Reinhard & Anacleto Rojas Jr.

Date:

10.21.2020

8 - Academics & Learning		1	2	3	4	5	N/A	70.00	47%	
8.1	Are studios appropriately configured per the ed spec?		2					Comments	1.00 2.00	
1	Very unsatisfactory - Too small, no flexibility, disconnected	<p>Some studios are clustered around a shared common space. Some studios configured as a typical double loaded corridor with studios on both sides. Studios range in size but the majority are undersized at 740 SF.</p>								
2	Unsatisfactory - Too small, only one area for all teaching methods, limited flexibility, disconnected									
3	Neutral - Adequate size, multiple areas for different teaching methods, adequate flexibility, limited transparency and connection to other studios and shared learning spaces, needs updates or renovations to function well.									
4	Satisfactory - Good size, multiple areas for different teaching methods, good flexibility, good transparency and connection to other studios and shared learning spaces									
5	Very Satisfactory - Generous size, multiple areas for different teaching methods, excellent flexibility, generous display area and visual teaching tools, excellent transparency and connection with other studios and shared learning spaces									
N/A	Does not apply									
8.2	Do Pre-K and Kinder have appropriate support spaces such as restrooms and storage per the ed spec?				4			Comments	1.00 4.00	
1	Very unsatisfactory - None provided	<p>Studios good sized (950SF) and well connected with restrooms.</p>								
2	Unsatisfactory - Too small, disconnected, poor condition									
3	Neutral - Adequate size, average condition, needs updates or renovations to function well									
4	Satisfactory - Good size, connected, good condition									
5	Very Satisfactory - Generous size, connected, excellent condition									
N/A	Does not apply									

8 - Academics & Learning (cont.)		1	2	3	4	5	N/A		
8.3	Do studios have appropriate support spaces such as storage per the ed spec?			3				Comments	1.00 3.00
	1 Very unsatisfactory - None provided 2 Unsatisfactory - Too small, disconnected, poor condition 3 Neutral - Adequate size, average condition, needs updates or renovations to function well 4 Satisfactory - Good size, connected, good condition 5 Very Satisfactory - Generous size, connected, excellent condition N/A Does not apply	Storage appears to be lacking in studios with materials being stored in the common areas.							
8.4	Do typical learning neighborhoods have small group rooms and open collaboration space?			3				Comments	1.00 3.00
	1 Very unsatisfactory - No breakout rooms or open collaboration spaces are provided 2 Unsatisfactory - Too small or too few, poor condition, no flexibility, lacks visual connection to learning neighborhood, poor acoustic privacy 3 Average - Adequate size, adequate condition, needs some renovations or updates to function well 4 Satisfactory - Good size, good condition and flexibility, transparency and connection to learning neighborhood, acoustic privacy 5 Very Satisfactory - Generous size, excellent condition and flexibility, transparency and connection to learning neighborhood, acoustic privacy N/A Does not apply	No breakout rooms within the learning neighborhoods. Some neighborhoods have an open common space.							
8.5	Are general studios large enough to support project-based learning and multiple teaching modalities?				4			Comments	1.00 4.00
	1 Very unsatisfactory - Too small, no flexibility, does not support project-based learning 2 Unsatisfactory - Undersized, decentralized resources, limited flexibility 3 Average - Adequate size, needs some renovations or updates to function well 4 Satisfactory - Good size, centralized resources, good flexibility 5 Very Satisfactory - Generous size, centralized project resources, excellent flexibility N/A Does not apply	Typical studios are approximately 740 square feet, undersized per the ed spec of 850 square feet, but have a large open shared common space for some added flexibility.							

8 - Academics & Learning (cont.)		1	2	3	4	5	N/A			
8.6	Are Maker Spaces and support spaces appropriately configured per the ed spec?	1						Comments	1.00	1.00
1	Very unsatisfactory - No dedicated maker spaces							No dedicated maker space on campus.		
2	Unsatisfactory - Too small, poor condition, disconnected from learning spaces, no flexibility									
3	Average - Adequate size, adequate condition, needs some renovations or updates to function well									
4	Satisfactory - Good size, good condition, connected to learning spaces									
5	Very Satisfactory - Generous size, excellent condition, connected to learning spaces									
N/A	Does not apply									
8.7	Is there a Professional Learning Center in the learning neighborhood?	1						Comments	1.00	1.00
1	Very unsatisfactory - No dedicated space for Professional Learning Center							No dedicated Professional Learning Center within the campus.		
2	Unsatisfactory - Too small, poor condition, disconnected									
3	Average - Adequate size, adequate condition, needs some renovations or updates to function well									
4	Satisfactory - Good size, good condition, connected									
5	Very Satisfactory - Generous size, excellent condition, connected									
N/A	Does not apply									
8.8	Is there a dedicated science room and support space?	1						Comments	0.00	0.00
1	No							Monitoring answer, but doesn't affect overall score.		
5	Yes									
8.9	Are there adequate places to display the evidence and artifacts of learning (both 2D and 3D)?				4			Comments	1.00	4.00
1	Very unsatisfactory - No dedicated space							Multiple locations within campus displaying 2D and 3D artifacts of students.		
2	Unsatisfactory - Too small, non-dedicated, poor condition									
3	Average - Adequate size, adequate condition, needs updates or renovations to function well									
4	Satisfactory - Good size, good condition									
5	Very Satisfactory - Generous size, excellent condition									
N/A	Does not apply									

8 - Academics & Learning (cont.)		1	2	3	4	5	N/A			
8.10	Does the building provide adequate opportunities for students/teachers to collaborate in varying group sizes?			3				Comments	1.00 3.00	
1	Very unsatisfactory - No space to support collaboration in various sizes.							Only large spaces for certain grades. 3rd and 4th grade classes in portables.		
2	Unsatisfactory - Too small, inflexible, only one option, does not support a variety of group sizes									
3	Average - Adequate space for collaboration, needs updates or renovations to function well.									
4	Satisfactory - Good size, good condition, multiple options to support a variety of group sizes									
5	Very Satisfactory - Generous size, excellent condition, multiple options to support a variety of group sizes									
N/A	Does not apply									
8.11	Does the building provide opportunities for informal interaction?	1						Comments	1.00 1.00	
1	Very unsatisfactory - No space							No furniture to support informal interactions within the building. The main corridor is large enough where this could occur if furnished appropriately.		
2	Unsatisfactory - Too small, poor condition, layout and furnishings do not support informal interaction well									
3	Average - Adequate size and condition, needs updates or renovations to function well.									
4	Satisfactory - Good size, good condition, layout and furnishings support informal interactions									
5	Very Satisfactory - Generous size, excellent condition, layout and furnishings support informal interactions									
N/A	Does not apply									
8.12	Does the learning neighborhood / building provide adequate opportunities for students to work independently?		2					Comments	1.00 2.00	
1	Very unsatisfactory - No breakout rooms/small study spaces							Only one space for students to work independently is an open shared common space.		
2	Unsatisfactory - Too small, poor condition, no acoustic privacy, only one space for independent work, disconnected from learning neighborhood									
3	Average - Adequate size and condition, needs updates or renovations to function well.									
4	Satisfactory - Good size and condition, acoustic privacy, variety of independent work space options, connected to learning neighborhood									
5	Very Satisfactory - Generous size, excellent condition, acoustic privacy, variety of independent work space options, connected to learning neighborhood									
N/A	Does not apply									

8 - Academics & Learning (cont.)											
8.13	Are Special Education spaces appropriately configured per the ed spec?		2					Comments	1.00	2.00	
1	Very unsatisfactory - Too small, no flexibility, disconnected						Special education room located in a reconfigured studio and does not have bathrooms directly connected.				
2	Unsatisfactory - Too small, only one area for all teaching methods, limited flexibility, disconnected										
3	Neutral - Adequate size, multiple areas for different teaching methods, adequate flexibility, limited transparency and connection to other studios and shared learning spaces, needs updates or renovations to function well.										
4	Satisfactory - Good size, multiple areas for different teaching methods, good flexibility, good transparency and connection to other studios and shared learning spaces										
5	Very Satisfactory - Generous size, multiple areas for different teaching methods, excellent flexibility, generous display area and visual teaching tools, excellent transparency and connection with other studios and shared learning spaces										
N/A	Does not apply										
8.14	Are Special Education support spaces, such as storage, space for washer/dryer, appropriately configured per the ed spec?		2				Comments	1.00	2.00		
1	Very unsatisfactory - None provided						Does not have washer or dryer and does not have a connected restroom. Students are taken to adjacent restrooms across a corridor.				
2	Unsatisfactory - Too small, disconnected, poor condition										
3	Neutral - Adequate size, average condition, needs updates or renovations to function well										
4	Satisfactory - Good size, connected, good condition										
5	Very Satisfactory - Generous size, connected, excellent condition										
N/A	Does not apply										
8.15	Are Accessible restrooms and changing rooms readily available to the Special Education spaces?	1					Comments	1.00	1.00		
1	No						Students are taken to adjacent restrooms across a corridor.				
5	Yes										

9 - Visual and Performing Arts		1	2	3	4	5	N/A	15.00	53%
9.1	Are music spaces and the cafeteria stage appropriately configured per the ed spec?				4			Comments	1.00 4.00
	1 Very unsatisfactory - Too small, missing program spaces							Space appears to be in good condition and well configured adjacent to the stage.	
	2 Unsatisfactory - Too small, poor condition								
	3 Neutral - Adequate size, adequate condition, needs updates or renovations to function well.								
	4 Satisfactory - Good size, good condition								
	5 Very Satisfactory - Generous size, excellent condition								
	N/A Does not apply								
9.2	Are music and performance storage spaces appropriately configured per the ed spec?		2					Comments	1.00 2.00
	1 Very unsatisfactory - None provided							Music is located in a portable. Storage spaces are too small. Music room has 3 storage spaces, approximately 63 square feet each.	
	2 Unsatisfactory - Too small, disconnected, poor condition								
	3 Neutral - Adequate size, average condition, needs updates or renovations to function well								
	4 Satisfactory - Good size, connected, good condition								
	5 Very Satisfactory - Generous size, connected, excellent condition								
	N/A Does not apply								
9.3	Are Visual Arts spaces and storage appropriately configured per the ed spec?		2					Comments	1.00 2.00
	1 Very unsatisfactory - Too small, missing program spaces							One art room is a dedicated art room and is lacking storage. Another typical studio being used as art room.	
	2 Unsatisfactory - Too small, poor condition								
	3 Average - Adequate size, adequate condition, needs some renovations or updates to function well								
	4 Satisfactory - Good size, good condition								
	5 Very Satisfactory - Generous size, excellent condition								
	N/A Does not apply								

10 - PE and Wellness		1	2	3	4	5	N/A	10.00	50%
10.1	Does the campus meet the ed spec standard for physical education program spaces?			3				1.00	3.00
	1 Very unsatisfactory - Too small, missing program spaces 2 Unsatisfactory - Too small, poor condition 3 Average - Adequate size, adequate condition, needs some renovations or updates to function well 4 Satisfactory - Good size, good condition 5 Very Satisfactory - Generous size, excellent condition N/A Does not apply	Gym adequate in size some updates needed and more storage needed.							
10.2	Are the physical education storage spaces appropriately configured per the ed spec?		2					1.00	2.00
	1 Very unsatisfactory - None provided 2 Unsatisfactory - Too small, disconnected, poor condition 3 Neutral - Adequate size, average condition, needs updates or renovations to function well 4 Satisfactory - Good size, connected, good condition 5 Very Satisfactory - Generous size, connected, excellent condition N/A Does not apply	Observed storage of equipment within the gym. Storage room is lacking.							
11 - Food Services		1	2	3	4	5	N/A	10.00	40%
11.1	Is the Dining Commons appropriately configured per the ed spec?		2					1.00	2.00
	1 Very unsatisfactory - Too small, missing program spaces 2 Unsatisfactory - Too small, poor condition, only one option for eating space provided, inadequate circulation 3 Average - Adequate size and condition, needs updates or renovations to function well 4 Satisfactory - Good size and condition, good circulation, multiple options for eating space (ex: connection to outdoor eating space) 5 Very Satisfactory - Generous size, excellent condition and circulation, multiple options for eating space (ex: connection to outdoor eating space) N/A Does not apply	Dining commons is undersized at 3,450 square feet. Based on campus capacity, cafeteria should be 4,1400SF. It is even more undersized because the current enrollment exceeds capacity. Space is in good condition and appears well maintained. Only one type of seating is provided.							
11.2	Are the Food Services support spaces appropriately configured per the ed spec?		2					1.00	2.00
	1 Very unsatisfactory - None provided 2 Unsatisfactory - Too small, disconnected, poor condition 3 Neutral - Adequate size, average condition, needs updates or renovations to function well 4 Satisfactory - Good size, connected, good condition 5 Very Satisfactory - Generous size, connected, excellent condition N/A Does not apply	The kitchen and serving area is too small per the ed spec at approximately 1,300 square feet.							

12 - Media Resources		1	2	3	4	5	N/A	30.00	70%
12.1	Is the Library/Media Center easily accessible for the occupants and visitors to the school?			3				1.00	3.00
	1 Very unsatisfactory - Not accessible 2 Unsatisfactory - Limited access, difficult to find, no transparency 3 Average - Adequate accessibility, needs updates or renovations to function well 4 Satisfactory - Accessible, easy to find, good transparency, good condition 5 Very Satisfactory - Accessible, easy to find, excellent transparency, excellent condition N/A Does not apply							Library is easily located for occupants being centrally located. It requires visitors to access into the building before locating.	
12.2	How well does the Library/Media Center support quiet study?		2					1.00	2.00
	1 Very unsatisfactory - No quiet study spaces 2 Unsatisfactory - One area in poor condition, poor acoustic privacy 3 Average - One or more areas provided, needing updates or renovations to function well 4 Satisfactory - Clusters or small rooms adjacent to media center, good condition, good acoustic privacy 5 Very Satisfactory - Multiple clusters or small rooms adjacent to media center, excellent condition, excellent acoustic privacy N/A Does not apply							Library is an open space and does not have any break out rooms.	
12.3	How well does the Library/Media Center support social interaction?				4			1.00	4.00
	1 Very unsatisfactory - No space 2 Unsatisfactory - Too small, poor condition, layout and furnishings do not support informal interaction well 3 Average - Adequate size and condition, needs updates or renovations to function well. 4 Satisfactory - Good size, good condition, layout and furnishings support informal interactions 5 Very Satisfactory - Generous size, excellent condition, layout and furnishings support informal interactions N/A Does not apply							Multiple types of furniture with some to support social interaction.	
12.4	How well does the Library/Media Center support collaborative work in small groups (4-8 students)?				4			1.00	4.00
	1 Very unsatisfactory - No breakout rooms, no flexible furniture, no support 2 Unsatisfactory - Too small, one area, poor condition 3 Average - Adequate size, multiple areas provided, needing updates or renovations to function well 4 Satisfactory - Clusters or small rooms adjacent to media center, flexible furniture, good condition 5 Very Satisfactory - Multiple clusters or small rooms adjacent to media center, flexible furniture, excellent condition N/A Does not apply							Furniture dispersed among the bookshelves to create spaces to support small collaborative groups.	

12 - Media Resources - Continued		1	2	3	4	5	N/A			
12.5	How well does the Library/Media Center support collaborative work in larger groups (10-25)?				4			Comments	1.00 4.00	
1	Very unsatisfactory - No gathering areas						Furniture dispersed among the bookshelves to create spaces to support collaborative groups of larger groups. One area with tiered seating for a class to have a lesson.			
2	Unsatisfactory - Too small, one common space, limited seating, poor condition									
3	Average - Adequate size, one common space, needs updates or renovations to function well									
4	Satisfactory - Good size, multiple common spaces with seating, good condition									
5	Very Satisfactory - Generous size, multiple commons spaces with seating, excellent condition									
N/A	Does not apply									
12.6	How well does the Library/Media Center support technology?				4			Comments	1.00 4.00	
1	Very unsatisfactory - No vis comm tools						Multiples forms of technology observed with flatpanel display and projectors.			
2	Unsatisfactory - Outdated, poorly functioning, or insufficient									
3	Good - Mix of old and new whiteboards/projectors/etc.									
4	Satisfactory - Projectors, marker boards, smart boards in most spaces - good condition									
5	Very Satisfactory - Projectors, marker boards, smart boards in most spaces - new condition									
N/A	Does not apply									
13 - Technology		1	2	3	4	5	N/A	20.00 60%		
13.1	How well equipped are the facilities with instructional technology?				4			Comments	1.00 4.00	
1	Very unsatisfactory - Limited to no technology present in instructional spaces						Multiple types of technology with flat panel display and projectors in good condition.			
2	Unsatisfactory - One type of technology present									
3	Average - Multiple types of technology, smart boards, poor condition, limited to only certain areas of school									
4	Satisfactory - Multiple types of technology, smart boards, good condition.									
5	Very Satisfactory - Multiple types of technology, smart boards, excellent condition									
N/A	Does not apply									
13.2	Is there an adequate number of power and data outlets in learning spaces?			3				Comments	1.00 3.00	
1	Very unsatisfactory - Outlet configuration does not support digital devices throughout school (1 per wall)						Typical studios have 3 outlets per wall.			
2	Unsatisfactory - Outlet configuration support digital devices only in certain areas of school (2 per wall)									
3	Average - Outlet configuration support digital devices but not enough capacity throughout school (3 per wall)									
4	Satisfactory - Outlet configuration support digital devices with adequate coverage and capacity throughout school (>3 per wall)									
5	Very Satisfactory - Excellent outlet configuration to support digital devices throughout school (>3 per wall)									
N/A	Does not apply									

13 - Technology (cont.)		1	2	3	4	5	N/A	Comments			
13.3	Are there adequate charging locations for devices?				4				1.00	4.00	
1	Very unsatisfactory - No centralized charging location							Some studios have charging stations for devices.			
2	Unsatisfactory - Centralized charging location, but inadequate in size for number of devices										
3	Average - Charging cart or tower but not adequately sized for number of devices										
4	Satisfactory - Charging cart or tower not centralized										
5	Very Satisfactory - Charging cart or tower located centralized location. Excellent condition										
N/A	Does not apply										
13.4	Is there adequate AV for presentations spaces – cafeteria and gym?	1							1.00	1.00	
1	Very unsatisfactory - AV not present in one or more space							Gym and Cafeteria lacking projection screens for presentations.			
2	Unsatisfactory - AV undersized for room, poor condition										
3	Average - Adequately sized / poor condition OR AV undersized / adequate condition										
4	Satisfactory - Good size, good condition										
5	Very Satisfactory - Generous sized, excellent condition										
N/A	Does not apply										
13.5	Is there digital media signage at the reception area?	1							0.00	0.00	
1	Very unsatisfactory - No digital media present in reception area							Reception area does not have any digital media signage.			
2	Unsatisfactory - Undersized, poor condition										
3	Average - Adequately sized / poor condition OR undersized / adequate condition										
4	Satisfactory - Media signage present, good sized, good condition										
5	Very Satisfactory - Generously sized, excellent condition										
N/A	Does not apply										

