

## Educational Suitability Summary Report

Pickle Elementary School

Date: 01/05/2021

**Score 68% Satisfactory**

Pickle Elementary School, serving an enrollment of approximately 445 students in northeast Austin, is known for its close ties to the St. John Community Center. Included on the 16.6 acres campus through a joint use agreement with the City of Austin are a community center, community clinic and public library. The school was constructed in 2001 and shares several key spaces with the community center. The shared resources mean that the campus and gym are quite large in comparison to other elementary schools in the district.

The school offers pre-K, dual-language and after-school programs. Studios are spacious, with high ceilings and clerestory daylighting. The spaces have good control of temperature and lighting for occupant comfort. Most of the school is arranged with studios along a hallway with limited transparency or breakout spaces. Two of the wings have a central learning neighborhood, although at the time of the assessment these were being used for storage.

### Interview Overview

Principal Rosa Waters explained the importance that Pickle Elementary school has for the surrounding neighborhood. The school and community center are deeply rooted in the history of this community. In the main corridor of the building, historical artifacts are exhibited in large glass display cases built into the walls. Historical street names are cast into the floors to convey the history of the site.

The school sees its role as not just teaching students but educating the entire community. Principal Waters wants a large, flexible community room where the school can host events, classes or community meetings. Modern technology in the community room would be a key tool to help educate these families, as many of them have limited access or familiarity with technology. Improved technology infrastructure is needed, including better Wi-Fi and power distribution. The principal's office has very poor wi-fi signal. They would like to see future technology integrated into walls rather than bulky televisions on carts.

The school is proud of its outdoor learning spaces, and they are in the process of creating two additional seating areas for groups of 20-30 students. Many of these spaces could be improved with better shade cover and access to power and data. The outdoor learning spaces at the new science and maker wing function very well, with a large, covered area and direct access and visibility from the interior studios.

**Assessment Findings**

The Educational Suitability Assessment of Pickle Elementary School earned a 68% overall score and places the campus in a category of Satisfactory. The assessment consists of seven General Building categories and seven Academic categories to determine areas that need more attention.

**Average Categories (51-65%):**

**General Building**

Score is average.

The school’s unique arrangement with the attached community center offers numerous opportunities for shared resources. The gym and cafeteria can operate as part of the school or as part of the community center. School and community pride is conveyed through the exterior murals and vitrines found throughout the school. Unique art pieces convey historic construction and agriculture.

**Security**

Score is average.



**Academics & Learning**

Score is average.

Studios are well sized but have limited opportunities to support flexible learning spaces in multiple group sizes. Hallways do not have usable breakout spaces, and studios lack transparency to supervise learning outside of the studios.

**Visual and Performing Arts**

Score is average.

The stage in the gym is quite large and sophisticated for an elementary school. The art and music rooms nearby are well sized with good storage.

**Media Resources**

Score is average.

The library is near the main entry but has little visibility or signage. Community functions may be hosted in the branch library in the facility. The library is a single, large open space with different areas defined by furniture arrangements. No breakout areas are provided, and acoustical separation for different groups would be difficult.

**Technology**

Score is average.

Each studio is equipped with flat panel TVs on mobile carts, projectors and projector screens. Power distribution is limited, with only two outlets per wall. Mobile charging carts are present in the computer lab, but it is unclear how these are utilized on the campus.

**Administration Spaces**

**Educational Suitability Summary Report**  
Pickle Elementary School

Perkins&amp;Will

Score is average.

The administration space is well sized with ample natural light. There are no conference rooms in the office, but the offices offer good acoustic privacy.

**Satisfactory Categories (66-80%):****Exterior**

Score is satisfactory.

A small drop-off loop and canopy mark the main entry to the school. The analog monument sign is in good condition and easily visible from the street.

**Outdoor Learning and Activity**

Score is satisfactory.

The indoor-outdoor science studios are an excellent example of flexible learning spaces. Two studios connected with a sliding wall allow them to serve groups of various sizes. A transparent wall separates the studios from the fully covered outdoor space directly outside the two rooms. Learning gardens and playscapes are not in good condition. Playscapes are faded and the only shaded area is the paved court outside of the gym. The learning garden is spacious but is not well maintained. When it rains, water leaks from the garden space into the main office.

**Environmental Quality**

Score is satisfactory.

Acoustics and lighting in the studios are very good. Each room has windows at eye level, as well as a skylight that brings light down over the sloped ceiling.

**Furniture, Fixtures, Equipment**

Score is satisfactory.

Much of the furniture in the school is in good condition. Studios have loose tables and chairs that allow them to be rearranged for individual or group learning. Cafeteria offers numerous seating types, including outdoor dining options.

**Food Services**

Score is satisfactory.

Cafeteria is spacious with lots of natural light. The space has good visibility to the large outdoor dining area next to it. This outdoor area is fenced in and provides a variety of seating options.

**Very Satisfactory Categories (81-100%):****Controllability of Systems**

Score is very satisfactory.

Studios have individual thermostats to control temperature. Artificial lighting controls are excellent; all fixtures have two settings and dimming. All windows have blinds in good condition to control natural light.

**PE and Wellness**

Score is very satisfactory.

The gym is a shared amenity for the community center and the school. It is quite large for an

02/11/2022

**Educational Suitability Summary Report**  
Pickle Elementary School

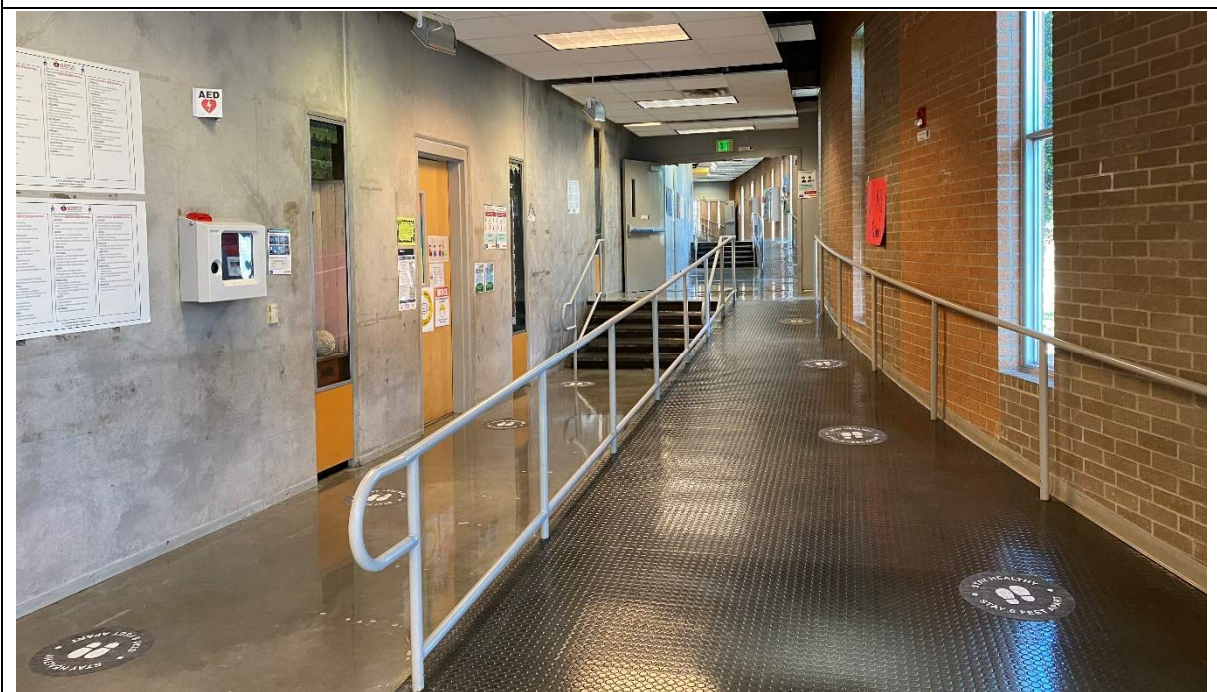
**Perkins&Will**

elementary school, with bleachers, stage and adjustable hoops. The size and number of windows bring lots of natural light into the space and make it feel even larger.

**Supporting Photographs**



*Exterior: Monument sign and building entry.*



*General Building: Main building corridor with ramps and stairs to accommodate grade change.*

**Supporting Photographs**



*Academics and Learning: Windows and skylight help bring lots of daylight into studios.*

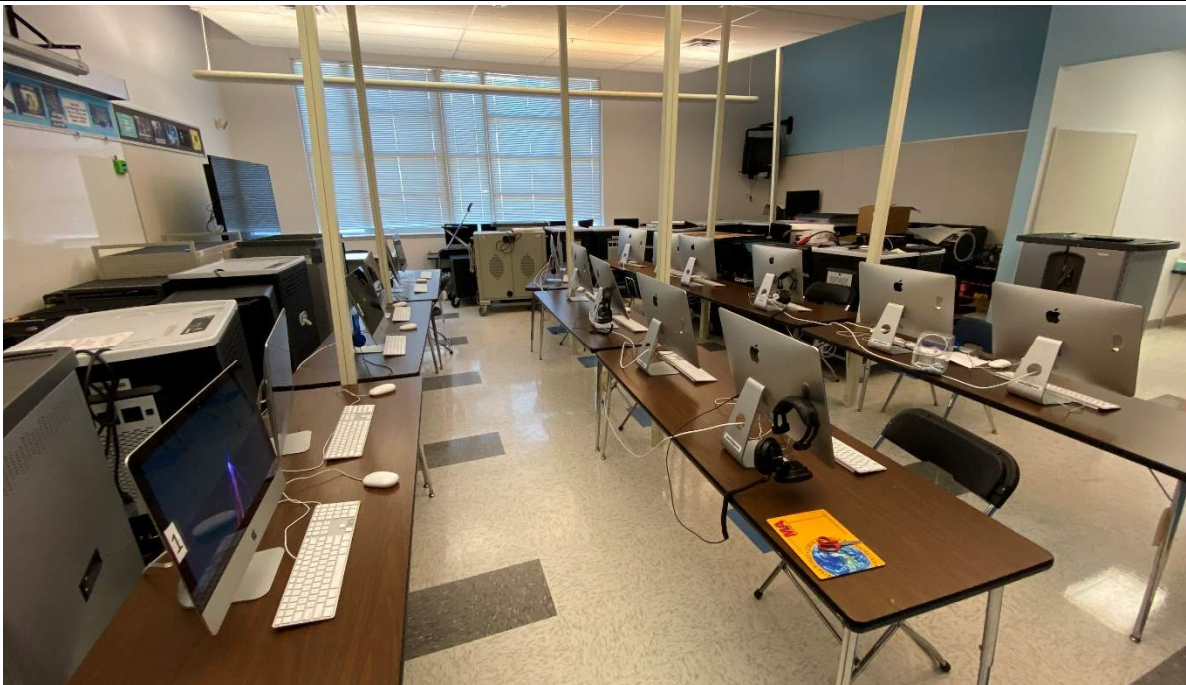


*Media Center: Flexible and stackable furniture gives ability to reconfigure the library.*

**Supporting Photographs**

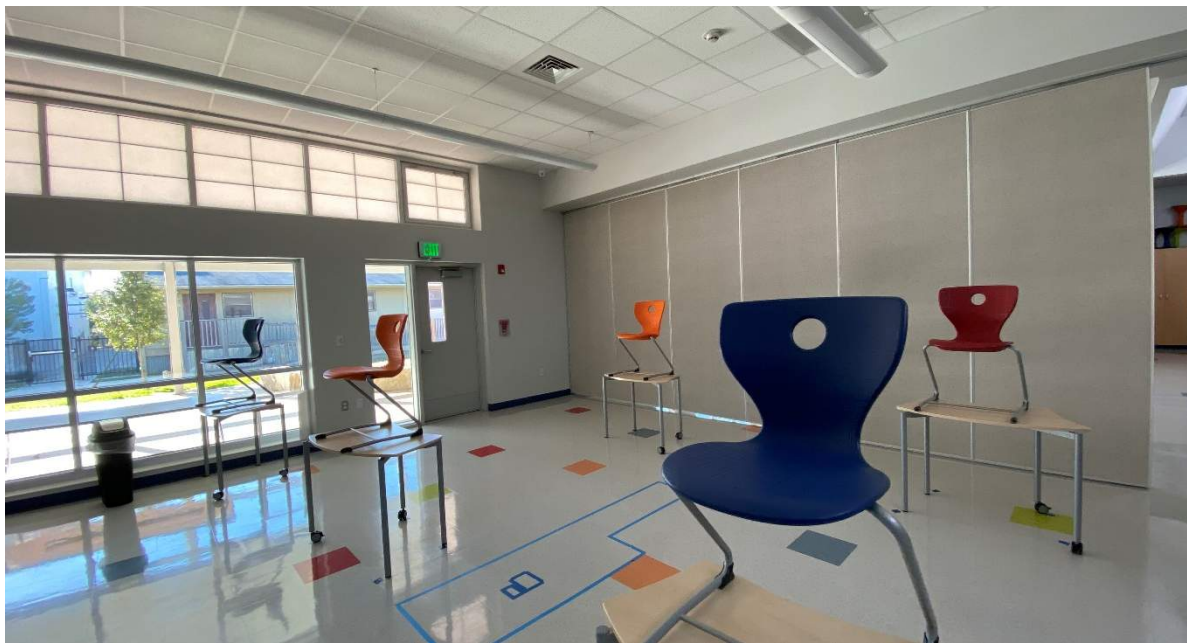


*Academics and Learning: Breakout space between studios used as storage. Storage appears to be an issue. This could be an outcome of COVID-19 protocols and does not necessarily reflect a normal school year.*



*Academics and Learning: Computer lab is in very good condition with mobile charging carts.*

**Supporting Photographs**



*Academics and Learning: Science Studio with moving wall and views to outdoor studio.*



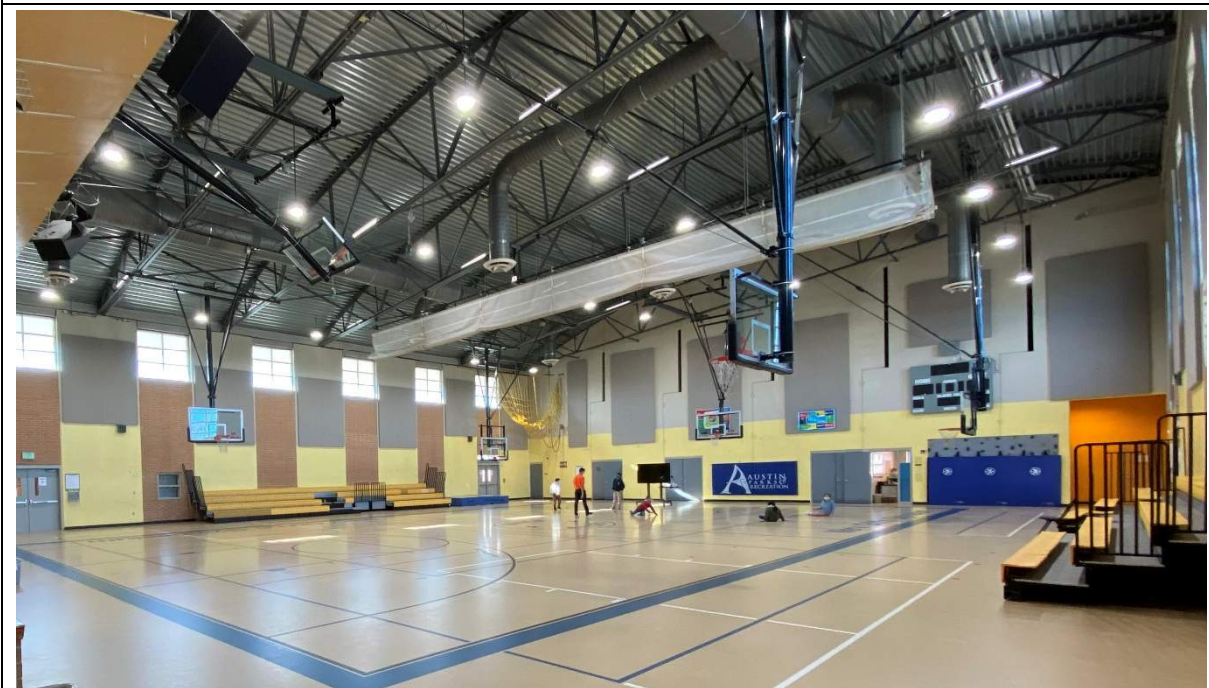
*Outdoor Learning and Activity: Covered outdoor studio outside of flexible science studio.*



**Supporting Photographs**



*Food Services: Large cafeteria with good natural light connected to outdoor dining as well.*



*PE and Wellness: Large gym with bleachers and adjustable basketball hoops.*

**Supporting Photographs**



*Outdoor Learning and Activity: Playscape is faded and lacks a shade canopy.*



*Outdoor Learning and Activity: Learning garden with compost and cisterns.*



### Austin ISD Educational Suitability Assessment Criteria

#### General Building

School Name

Pickle Elementary School

Walk Attendees:

Kevin Kinsey, Patrick Reinhard

Date:

01.05.2021

1 - Exterior		1	2	3	4	5	N/A	8.75	66%	
1.1	Does the site permit desirable separation of vehicular, bus and pedestrian traffic?			3				Comments	1.00	3.00
	1 Very unsatisfactory - Bus, car and pedestrian all happen at the same location							One small drop-off loop for parents with limited stack space. Small drop-off canopy. Buses only for life skills. Drop-off in back. Limited space in C Drive causes serious back ups and jams.		
	2 Unsatisfactory - Cars and buses mix, pedestrians are separated									
	3 Average - Buses, cars, and pedestrians are separate but stack space is small									
	4 Satisfactory - Buses, cars, and pedestrians are separate but drop off does not have a canopy or a holding place like a commons or cafeteria									
	5 Very satisfactory - Buses, cars, and pedestrians are separate and drop off area has a canopy and destination									
	N/A Does not apply									
1.2	Is the building easily identified with appropriate signage and community wayfinding?			3				Comments	0.25	0.75
	1 Very unsatisfactory - Campus has no signage / wayfinding							Analog monument sign is visible and in good condition.		
	2 Unsatisfactory - Signage/wayfinding is faded/hidden									
	3 Average - Signage / wayfinding visible but not apparent									
	4 Satisfactory - Signage / wayfinding is visible but not good condition									
	5 Very satisfactory - Signage and wayfinding is visible and easy to use									
	N/A Does not apply									

1 - Exterior (cont.)		1	2	3	4	5	N/A			
1.3	Is the dumpster accessible for trash / compost disposal?				4			Comments	0.50 <b>2.00</b>	
1	Very unsatisfactory - No compost present, route has obstacles (stairs, curbs, barriers) to dumpster							Dumpster, trash and recycling are accessible but out in open and unscreened. Not concealed and are an eyesore for visitors on the cite side.		
2	Unsatisfactory - Compost is present. Route has obstacles to dumpster									
3	Average - Compost is present (<100' to cafeteria), Route to dumpster is free and clear but the two are not directly adjacent.									
4	Satisfactory - Compost and dumpster are directly adjacent and route is barrier free									
5	Very Satisfactory - Compost and dumpster are directly adjacent and route is barrier free. Dumpster are shaped / positioned so people of all heights can access it.									
N/A	Does not apply									
2 - Outdoor Learning and Activity		1	2	3	4	5	N/A	15.00	80%	
2.1	Are outdoor studios and support spaces appropriately configured per the ed spec?					5		Comments	1.00 <b>5.00</b>	
1	Very unsatisfactory - No dedicated outdoor studios							Science classroom outdoor learning space is ideal. With ample transparency into studios and full cover		
2	Unsatisfactory - Too small, poor condition, disconnected from learning spaces, no flexibility, no shade provided									
3	Average - Adequate size, adequate condition, needs some renovations or updates to function well, 50% or less shade coverage over studio area									
4	Satisfactory - Good size, good condition, connected to learning spaces, good flexibility, more than 50% shade coverage over studio area									
5	Very satisfactory - Generous size, excellent condition, connected to learning spaces, excellent flexibility, full shade coverage over studio area									
N/A	Does not apply									
2.2	Are active playgrounds (elementary only) and support spaces configured per the ed spec?		2					Comments	1.00 <b>2.00</b>	
1	Very unsatisfactory - No dedicated active playground							Old playscapes, no shade over play areas. One paved area has cover.  Principal's comment - Equipment such as swings need to be replaced. Next to the playground there is a bathroom which is abandoned and unmaintained by the city and needs to either be torn down or completely re done to make it functional and safe.		
2	Unsatisfactory - Too small, poor condition, no shade provided									
3	Average - Adequate size, adequate condition, needs some renovations or updates to function well, 50% or less shade coverage over play structure									
4	Satisfactory - Good size, good condition, more than 50% shade coverage over play structure									
5	Very satisfactory - Generous size, excellent condition, full shade coverage over play structure									
N/A	Does not apply									

2 - Outdoor Learning and Activity (cont)		1	2	3	4	5	N/A				
2.3	Are gardens and support spaces appropriately configured per the ed spec? (evaluation on infrastructure not condition of plants)			3					Comments	0.00	0.00
1	Very unsatisfactory - No dedicated gardens							Good size, but limited connectivity. Hose present. Outdoor storage and compost. (Monitoring answer, does not affect score for Outdoor Learning and Activity.)  Principal's comment - The garden is fine; however, the area needs to be re-lined. When it rains, the office floods due to water coming through the walls.			
2	Unsatisfactory - Too small, poor condition, disconnected from learning spaces, no flexibility, no accessible water source										
3	Average - Adequate size, adequate condition, needs some renovations or updates to function well, water source is difficult to access										
4	Satisfactory - Good size, good condition, connected to learning spaces, good flexibility, water source is accessible with 100 ft hose										
5	Very Satisfactory - Generous size, excellent condition, connected to learning spaces, excellent flexibility, water source is less than 50ft from the garden or has irrigation										
N/A	Does not apply										
2.4	Are the rain gardens and/or cisterns appropriately configured per the ed spec?		2						Comments	0.00	0.00
1	Very unsatisfactory - No rain gardens or cisterns							Rain barrels present but not functional. They are undersized. (Monitoring answer, does not affect score for Outdoor Learning and Activity.)			
2	Unsatisfactory - Too small, poor condition, not functioning, disconnected										
3	Average - Adequate size, adequate condition, is connected, needs some renovations or updates to function well										
4	Satisfactory - Good size, good condition, functions properly										
5	Very Satisfactory - Generous size, excellent condition, exceptional functionality, connected to learning spaces, educational signage provided										
N/A	Does not apply										
2.5	Does the school have animal husbandry? (optional)	1							Comments	0.00	0.00
1	No										
5	Yes										
2.6	Does the school have nature loop trails? (optional)	1							Comments	0.00	0.00
1	No										
5	Yes										
2.7	Does the school have a learning pond? (optional)	1							Comments	0.00	0.00
1	No										
5	Yes										
2.8	Does the school have a grass play field and walking trail?					5			Comments	1.00	5.00
1	No										
5	Yes										

<b>3 - General Building</b>		1	2	3	4	5	N/A	11.25	<b>53%</b>	
3.1	Are interior circulation routes wide enough to safely and effectively accommodate student movement?				4			Comments	0.50 <b>2.00</b>	
1	Very unsatisfactory - Primary circulation is 5'-0" to 6'-0" wide								Hallways are 10' but split into ramps and stairwells. Secondary hallways 8'.	
2	Unsatisfactory - Primary circulation is 6'-0" to 7'-0" wide									
3	Average - Primary circulation is 7'-0" to 8'-0" wide									
4	Satisfactory - Primary circulation is 8'-0"-10'-0" wide									
5	Very satisfactory - Primary circulation is 10'-0"+ wide									
N/A	Does not apply									
3.2	Are community use areas arranged so that the school can allow night functions without full school access?			3				Comments	0.75 <b>2.25</b>	
1	Very unsatisfactory - Cafeteria, gym, and library cannot be accessed after hours								Cafeteria and gym can be secured after-hours and used for community center functions.	
2	Unsatisfactory - Only one of the public spaces (Cafeteria, Gym and Library) can be accessed from parking and secured after hours									
3	Average - Only two of the public spaces can be accessed from parking and secured after hours									
4	Satisfactory - All of the public spaces can be accessed from parking and secured from the rest of the building but not individually									
5	Very satisfactory - Cafeteria, gym, and library can be accessed from parking and locked off from rest of campus for night/evening use with their own entrance									
N/A	Does not apply									
3.3	Is there a community room that is a dedicated meeting space outside of school function?	1						Comments	0.75 <b>0.75</b>	
1	Very unsatisfactory - No dedicated community room								No dedicated community room controlled by the school however, Pickle ES is connected to a full community center and entry is secured.	
2	Unsatisfactory - Community room but within school function, no access after school hours									
3	Average - Community room, moderate size, but need some renovations or updates to function well									
4	Satisfactory - Community room, good size /layout, meets needs /functions well									
5	Very Satisfactory - Community room, generous size, nice condition, functions appropriately outside of school function									
N/A	Does not apply									
3.4	Does the general appearance of the school convey pride for the students and community?				4			Comments	0.25 <b>1.00</b>	
1	Very unsatisfactory - General appearance is poor								Murals convey community pride. Artwork in school conveys history of community.	
2	Unsatisfactory - General appearance is aged but ok									
3	Average - General appearance is good									
4	Satisfactory - General appearance shows pride in campus and student works									
5	Very Satisfactory - General appearance shows pride in campus and student works and is welcoming to the community									
N/A	Does not apply									
								Principal's comment - The art in hallways are beautiful but walls need to be sandblasted to make them look more attractive and allow them to offer a better frame for the art.		



5 - Environmental Quality		1	2	3	4	5	N/A	25.00	76%	
5.1	How are acoustics in studios in general?				4			Comments	1.00 <b>4.00</b>	
1	Very unsatisfactory - Recognized word/sound from adjacent studio/corridor	Walls to corridor are block and go to deck and carpeting in studios. Good acoustic privacy from corridor, but could hear noise from adjacent(non-connected) studio.								
2	Unsatisfactory - Audible sound from adjacent studio/corridor									
3	Average - Slight sound from outside room									
4	Satisfactory - Walls to deck insulated only white noise from mechanical system									
5	Very satisfactory - Able to hear quiet speaking from across the room									
N/A	Does not apply									
5.2	Is the studio artificial lighting adequate quality?				4			Comments	1.00 <b>4.00</b>	
1	Very unsatisfactory - Sporadic lights work, glare, less than 20 FC	Light meter ran 32								
2	Unsatisfactory - 10-19 FC or serious glare									
3	Average- 20-29 FC minor glare									
4	Satisfactory - 30-39 FC and no glare									
5	Very satisfactory - 40+ FC and no glare									
N/A	Does not apply									
5.3	Is there access to natural light in studios?					5		Comments	1.00 <b>5.00</b>	
1	Very unsatisfactory - No learning spaces have natural light	All have windows, but music and art have small windows.								
2	Unsatisfactory - 1-25% of learning spaces have natural light or windows are too small to let in light									
3	Average - 26-50% of learning spaces have natural light									
4	Satisfactory - 51-75% of learning spaces have natural light									
5	Very satisfactory - 76-100% of learning spaces have natural light									
N/A	Does not apply									
5.4	Is there access to outside views from learning spaces?			3				Comments	1.00 <b>3.00</b>	
1	Very unsatisfactory - No learning spaces have views	Views limited by other building wings								
2	Unsatisfactory - 1-25% of learning spaces have views or windows are too small to see out									
3	Average - 26-50% of learning spaces have views									
4	Satisfactory - 51-75% of learning spaces have views									
5	Very satisfactory - 76-100% of learning spaces have views									
N/A	Does not apply									



5 - Environmental Quality (cont.)		1	2	3	4	5	N/A		
5.5	Does the building have odor or pest problems?			3				Comments	1.00 <b>3.00</b>
1	Very unsatisfactory - Evidence of both pests and odors							None detected at time of walk.  Principals expressed concern around leaking at garden and possible mold. Cockroaches have been found in hallway 300. Also, after the storm, humid/wet smell in same area. Garden snakes have been found inside the building in area between cafeteria and gym.	
2	Unsatisfactory - Evidence of pests or odors								
3	Average - Limited evidence of pests, no odors								
4	Satisfactory - No evidence of pests / odors, school cleanliness in good condition								
5	Very Satisfactory - No evidence, school cleanliness in excellent condition								
N/A	Does not apply								
6 - Controllability of Systems		1	2	3	4	5	N/A		12.50 <b>92%</b>
6.1	Does the studio thermostat allow for individual control?					5		Comments	0.50 <b>2.50</b>
1	No							Principal's note - Many of non-functioning.	
5	Yes								
6.2	Are shades provided to control natural light in learning spaces?				4			Comments	1.00 <b>4.00</b>
1	Very unsatisfactory - No, windows are covered with boards/paper							Blinds present	
2	Unsatisfactory - No, windows have no light control								
3	Average - Yes, but poor condition blinds								
4	Satisfactory - Yes, blinds								
5	Very satisfactory - Blackout shades								
N/A	Does not apply								
6.3	What is the quality of lighting controls in the studios?					5		Comments	1.00 <b>5.00</b>
1	Very unsatisfactory - Single switch only per room							Dimmable	
2	Unsatisfactory - Alternating rows switch off								
3	Average - Alternating lamps in single fixtures switch off								
4	Satisfactory - Tri level switching								
5	Very satisfactory - Dimmable								
N/A	Does not apply								

7 - Furniture, Fixtures & Equipment		1	2	3	4	5	N/A	18.75	69%	
7.1	What is the current condition of the furniture?				4			0.75	3.00	
1	Very unsatisfactory - Damaged or broken, non-functioning	<p>Most in very good condition. Some new, some older but all in good shape. Art room storage is in poor condition.</p>								
2	Unsatisfactory - Torn/ bent/ wrong size									
3	Average - Scratched/dented/marked									
4	Satisfactory - Not new, but sturdy and clean									
5	Very satisfactory - New									
N/A	Does not apply									
7.2	Are a variety of furniture types being accommodated throughout the school - learning commons, dining commons, other multi-use spaces?			3				1.00	3.00	
1	Very Unsatisfactory - Same furniture used in all spaces	<p>Most spaces have only one type of furniture. Cafeteria has a variety in the outdoor dining area.</p> <p>Principal's note - A greater variety of furniture is needed in Science rooms (eg: rolling chairs and stools)</p>								
2	Unsatisfactory - Furniture variety in one multi-use space									
3	Average - Furniture variety in more than one multi-use space									
4	Satisfactory - All multi-use spaces have greater than one type of furniture									
5	Very satisfactory - All multi-use spaces have greater than two types of furniture									
N/A	Does not apply									
7.3	How well does furniture accommodate rapid reconfiguration of a space?			3				1.00	3.00	
1	Very Unsatisfactory - Furniture is fixed or very heavy	<p>Flexible and mostly easy to move</p> <p>Principal's note - Only one classroom in 5th grade has the desks that are easy to move quickly for a variety of configurations.</p>								
2	Unsatisfactory - Furniture does not allow desks to be configured as individuals, small groups, or large groups									
3	Average - Mix of furniture that can reconfigure but is cumbersome to move									
4	Satisfactory - Furniture is flexible for multiple configurations of space									
5	Very satisfactory - Furniture is flexible for multiple configurations of space, easy to move and stack									
N/A	Does not apply									
7.4	Is the furniture ergonomic and size appropriate for grade level?				4			1.00	4.00	
1	Very unsatisfactory - Desk with attached chair combinations too small for grade level	<p>Tables and loose chairs. Some might be too heavy for students to easily move.</p>								
2	Unsatisfactory - Desk with attached chair combinations									
3	Average - Mix of studios with tables/loose chairs and desks with fixed seats									
4	Very satisfactory - Tables with loose chairs									
5	Very satisfactory - Tables with loose chairs that allow students to be active									
N/A	Does not apply									

Zero Waste		1	2	3	4	5	N/A	5.00	60%	
Do studios and corridors have blue recycle bins with bilingual instructions and/or image sorting instructions?				3				Comments	0.50 <b>1.50</b>	
1	Very unsatisfactory - There are no recycling and landfill bins and signage are sparse or infrequent. OR there are only landfill bins with no recycling bins.							A score for this category is being recorded, but this category is not calculated in the overall ESA average.  Blue recycle bins present but no signage.		
2	Unsatisfactory - Bins and signage are sparse or infrequent and/or lack clear signage.									
3	Average - 50% of corridors and studios have both a landfill bin and a recycle bin in an accessible location. The containers have clear signage.									
4	Satisfactory - 75% of studios and corridors have a visible landfill and recycle collection containers in an accessible location. The containers have clear signage.									
5	Very satisfactory - All studios / corridors (100%) have visible landfill and recycle collection containers in accessible locations. The containers have clear signage, and the style and format is consistent and uniform across campus.									
N/A	Does not apply									
Does the cafeteria (or wherever meals are served) have at least one of each: green compost bin, blue recycle bin, and landfill bin? Are the bins labelled clearly with bilingual and/or image sorting?				3				Comments	0.50 <b>1.50</b>	
1	Very unsatisfactory- There may be landfill bins, but there are no compost and/or recycle bins. There is not clear sorting signage.							No color coded waste bins - only gray.		
2	Unsatisfactory- Recycle, landfill, and compost bins are present, but the bins are scattered and no co-located next to one another. Signage is absent or inconsistent.									
3	Average- There is at least one waste station with all three bins (recycle, compost, landfill) located with close proximity to one another. The signage is visible and consistent.									
4	Satisfactory- There are several waste stations as described above									
5	Very Satisfactory - There are several waste stations as described above, and additional signage in the cafeteria that encourages recycling/composting.									
N/A	Does not apply									



**Perkins&Will**

**Austin ISD Educational Suitability Assessment Criteria**

**Academics - Elementary School**

**School Name**

**Pickle Elementary School**

**Walk Attendees:**

Kevin Kinsey, Patrick Reinhard

**Date:**

01.05.2021

<b>8 - Academics &amp; Learning</b>		1	2	3	4	5	N/A	70.00	<b>53%</b>	
8.1	Are studios appropriately configured per the ed spec?			3				Comments	1.00 <b>3.00</b>	
1	Very unsatisfactory - Too small, no flexibility, disconnected	<p>No transparency to hallways. Pairs of studios connected by restrooms. Overall good size.</p>								
2	Unsatisfactory - Too small, only one area for all teaching methods, limited flexibility, disconnected									
3	Neutral - Adequate size, multiple areas for different teaching methods, adequate flexibility, limited transparency and connection to other studios and shared learning spaces, needs updates or renovations to function well.									
4	Satisfactory - Good size, multiple areas for different teaching methods, good flexibility, good transparency and connection to other studios and shared learning spaces									
5	Very Satisfactory - Generous size, multiple areas for different teaching methods, excellent flexibility, generous display area and visual teaching tools, excellent transparency and connection with other studios and shared learning spaces									
N/A	Does not apply									
8.2	Do Pre-K and Kinder have appropriate support spaces such as restrooms and storage per the ed spec?				4			Comments	1.00 <b>4.00</b>	
1	Very unsatisfactory - None provided	<p>All studios have restrooms and storage. Storage is limited though.</p>								
2	Unsatisfactory - Too small, disconnected, poor condition									
3	Neutral - Adequate size, average condition, needs updates or renovations to function well									
4	Satisfactory - Good size, connected, good condition									
5	Very Satisfactory - Generous size, connected, excellent condition									
N/A	Does not apply									

8 - Academics & Learning (cont.)		1	2	3	4	5	N/A		
8.3	Do studios have appropriate support spaces such as storage per the ed spec?				4			Comments	1.00 <b>4.00</b>
	1 Very unsatisfactory - None provided 2 Unsatisfactory - Too small, disconnected, poor condition 3 Neutral - Adequate size, average condition, needs updates or renovations to function well 4 Satisfactory - Good size, connected, good condition 5 Very Satisfactory - Generous size, connected, excellent condition N/A Does not apply	All studios have storage as built-in cabinets along walls.							
8.4	Do typical learning neighborhoods have small group rooms and open collaboration space?		2					Comments	1.00 <b>2.00</b>
	1 Very unsatisfactory - No breakout rooms or open collaboration spaces are provided 2 Unsatisfactory - Too small or too few, poor condition, no flexibility, lacks visual connection to learning neighborhood, poor acoustic privacy 3 Average - Adequate size, adequate condition, needs some renovations or updates to function well 4 Satisfactory - Good size, good condition and flexibility, transparency and connection to learning neighborhood, acoustic privacy 5 Very Satisfactory - Generous size, excellent condition and flexibility, transparency and connection to learning neighborhood, acoustic privacy N/A Does not apply	2 learning commons in school.							
8.5	Are general studios large enough to support project-based learning and multiple teaching modalities?				4			Comments	1.00 <b>4.00</b>
	1 Very unsatisfactory - Too small, no flexibility, does not support project-based learning 2 Unsatisfactory - Undersized, decentralized resources, limited flexibility 3 Average - Adequate size, needs some renovations or updates to function well 4 Satisfactory - Good size, centralized resources, good flexibility 5 Very Satisfactory - Generous size, centralized project resources, excellent flexibility N/A Does not apply	Rooms are well sized with movable furniture.							

8 - Academics & Learning (cont.)		1	2	3	4	5	N/A				
8.6	Are Maker Spaces and support spaces appropriately configured per the ed spec?	1							Comments	1.00	1.00
1	Very unsatisfactory - No dedicated maker spaces										
2	Unsatisfactory - Too small, poor condition, disconnected from learning spaces, no flexibility										
3	Average - Adequate size, adequate condition, needs some renovations or updates to function well										
4	Satisfactory - Good size, good condition, connected to learning spaces										
5	Very Satisfactory - Generous size, excellent condition, connected to learning spaces										
N/A	Does not apply										
8.7	Is there a Professional Learning Center in the learning neighborhood?	1							Comments	1.00	1.00
1	Very unsatisfactory - No dedicated space for Professional Learning Center										
2	Unsatisfactory - Too small, poor condition, disconnected										
3	Average - Adequate size, adequate condition, needs some renovations or updates to function well										
4	Satisfactory - Good size, good condition, connected										
5	Very Satisfactory - Generous size, excellent condition, connected										
N/A	Does not apply										
8.8	Is there a dedicated science room and support space?					5			Comments	0.00	0.00
1	No								Monitoring answer, but doesn't affect overall score.		
5	Yes										
8.9	Are there adequate places to display the evidence and artifacts of learning (both 2D and 3D)?				4				Comments	1.00	4.00
1	Very unsatisfactory - No dedicated space								All hallways have 2D art. Main hallways have 3D display cases. Most displays look to be art.		
2	Unsatisfactory - Too small, non-dedicated, poor condition										
3	Average - Adequate size, adequate condition, needs updates or renovations to function well										
4	Satisfactory - Good size, good condition										
5	Very Satisfactory - Generous size, excellent condition										
N/A	Does not apply										

8 - Academics & Learning (cont.)		1	2	3	4	5	N/A			
8.10	Does the building provide adequate opportunities for students/teachers to collaborate in varying group sizes?			3				Comments	1.00 <b>3.00</b>	
1	Very unsatisfactory - No space to support collaboration in various sizes.							Only 2/4 studio wings have collaboration space in the corridor.		
2	Unsatisfactory - Too small, inflexible, only one option, does not support a variety of group sizes									
3	Average - Adequate space for collaboration, needs updates or renovations to function well.									
4	Satisfactory - Good size, good condition, multiple options to support a variety of group sizes									
5	Very Satisfactory - Generous size, excellent condition, multiple options to support a variety of group sizes									
N/A	Does not apply									
8.11	Does the building provide opportunities for informal interaction?		2					Comments	1.00 <b>2.00</b>	
1	Very unsatisfactory - No space							Few spaces for informal interaction		
2	Unsatisfactory - Too small, poor condition, layout and furnishings do not support informal interaction well									
3	Average - Adequate size and condition, needs updates or renovations to function well.									
4	Satisfactory - Good size, good condition, layout and furnishings support informal interactions									
5	Very Satisfactory - Generous size, excellent condition, layout and furnishings support informal interactions									
N/A	Does not apply									
8.12	Does the learning neighborhood / building provide adequate opportunities for students to work independently?	1						Comments	1.00 <b>1.00</b>	
1	Very unsatisfactory - No breakout rooms/small study spaces							No breakout spaces		
2	Unsatisfactory - Too small, poor condition, no acoustic privacy, only one space for independent work, disconnected from learning neighborhood									
3	Average - Adequate size and condition, needs updates or renovations to function well.									
4	Satisfactory - Good size and condition, acoustic privacy, variety of independent work space options, connected to learning neighborhood									
5	Very Satisfactory - Generous size, excellent condition, acoustic privacy, variety of independent work space options, connected to learning neighborhood									
N/A	Does not apply									

8 - Academics & Learning (cont.)												
8.13	Are Special Education spaces appropriately configured per the ed spec?	1								Comments	1.00	1.00
1	Very unsatisfactory - Too small, no flexibility, disconnected									2 studios connected by hallway. Limited transparency. Each studio is one space using furniture to divide spaces. Regular studio converted to special education.  Principal's note - The Life Skills room is not set up for that population of students. It has no laundry room, no kitchen, no re-direction safe room, no intercome volume control, and other furnishings and infrastructure.		
2	Unsatisfactory - Too small, only one area for all teaching methods, limited flexibility, disconnected											
3	Neutral - Adequate size, multiple areas for different teaching methods, adequate flexibility, limited transparency and connection to other studios and shared learning spaces, needs updates or renovations to function well.											
4	Satisfactory - Good size, multiple areas for different teaching methods, good flexibility, good transparency and connection to other studios and shared learning spaces											
5	Very Satisfactory - Generous size, multiple areas for different teaching methods, excellent flexibility, generous display area and visual teaching tools, excellent transparency and connection with other studios and shared learning spaces											
N/A	Does not apply											
8.14	Are Special Education support spaces, such as storage, space for washer/dryer, appropriately configured per the ed spec?		2							Comments	1.00	2.00
1	Very unsatisfactory - None provided									Storage is limited, and no life skills equipment or washer/dryer		
2	Unsatisfactory - Too small, disconnected, poor condition											
3	Neutral - Adequate size, average condition, needs updates or renovations to function well											
4	Satisfactory - Good size, connected, good condition											
5	Very Satisfactory - Generous size, connected, excellent condition											
N/A	Does not apply											
8.15	Are Accessible restrooms and changing rooms readily available to the Special Education spaces?					5				Comments	1.00	5.00
1	No									Accessible restroom present. Principal requested it to be bigger and better equipped.		
5	Yes											



<b>9 - Visual and Performing Arts</b>		1	2	3	4	5	N/A	15.00	60%
9.1	Are music spaces and the cafeteria stage appropriately configured per the ed spec?					5		Comments	1.00 <b>5.00</b>
	1 Very unsatisfactory - Too small, missing program spaces							Large stage in gym. Accessible. Very close to music spaces.	
	2 Unsatisfactory - Too small, poor condition								
	3 Neutral - Adequate size, adequate condition, needs updates or renovations to function well.								
	4 Satisfactory - Good size, good condition								
	5 Very Satisfactory - Generous size, excellent condition								
	N/A Does not apply								
9.2	Are music and performance storage spaces appropriately configured per the ed spec?		2					Comments	1.00 <b>2.00</b>
	1 Very unsatisfactory - None provided							No storage areas on stage. Music room has an office and storage. No restroom.	
	2 Unsatisfactory - Too small, disconnected, poor condition								
	3 Neutral - Adequate size, average condition, needs updates or renovations to function well								
	4 Satisfactory - Good size, connected, good condition								
	5 Very Satisfactory - Generous size, connected, excellent condition								
	N/A Does not apply								
9.3	Are Visual Arts spaces and storage appropriately configured per the ed spec?		2					Comments	1.00 <b>2.00</b>
	1 Very unsatisfactory - Too small, missing program spaces							Art room cabinets in poor condition. Room is good size at 900 s.f., but only one art room provided. No restroom.	
	2 Unsatisfactory - Too small, poor condition								
	3 Average - Adequate size, adequate condition, needs some renovations or updates to function well								
	4 Satisfactory - Good size, good condition								
	5 Very Satisfactory - Generous size, excellent condition								
	N/A Does not apply								

<b>10 - PE and Wellness</b>		1	2	3	4	5	N/A	10.00	100%
10.1	Does the campus meet the ed spec standard for physical education program spaces?					5		Comments	1.00 5.00
1	Very unsatisfactory - Too small, missing program spaces	Very large gym with stage, bleachers and adjustable hoops. Large windows and ample natural light. Attached restrooms.							
2	Unsatisfactory - Too small, poor condition								
3	Average - Adequate size, adequate condition, needs some renovations or updates to function well								
4	Satisfactory - Good size, good condition								
5	Very Satisfactory - Generous size, excellent condition								
N/A	Does not apply								
10.2	Are the physical education storage spaces appropriately configured per the ed spec?					5		Comments	1.00 5.00
1	Very unsatisfactory - None provided	Multiple large storage spaces that are shared with the City.							
2	Unsatisfactory - Too small, disconnected, poor condition								
3	Neutral - Adequate size, average condition, needs updates or renovations to function well								
4	Satisfactory - Good size, connected, good condition								
5	Very Satisfactory - Generous size, connected, excellent condition								
N/A	Does not apply								
<b>11 - Food Services</b>		1	2	3	4	5	N/A	10.00	80%
11.1	Is the Dining Commons appropriately configured per the ed spec?				4			Comments	1.00 4.00
1	Very unsatisfactory - Too small, missing program spaces	Outdoor dining, lots of natural light.							
2	Unsatisfactory - Too small, poor condition, only one option for eating space provided, inadequate circulation								
3	Average - Adequate size and condition, needs updates or renovations to function well								
4	Satisfactory - Good size and condition, good circulation, multiple options for eating space (ex: connection to outdoor eating space)								
5	Very Satisfactory - Generous size, excellent condition and circulation, multiple options for eating space (ex: connection to outdoor eating space)								
N/A	Does not apply								
11.2	Are the Food Services support spaces appropriately configured per the ed spec?				4			Comments	1.00 4.00
1	Very unsatisfactory - None provided	Restroom and office are provided. Good size.							
2	Unsatisfactory - Too small, disconnected, poor condition								
3	Neutral - Adequate size, average condition, needs updates or renovations to function well								
4	Satisfactory - Good size, connected, good condition								
5	Very Satisfactory - Generous size, connected, excellent condition								
N/A	Does not apply								

12 - Media Resources		1	2	3	4	5	N/A	30.00	53%
12.1	Is the Library/Media Center easily accessible for the occupants and visitors to the school?			3				Comments	1.00 3.00
	1 Very unsatisfactory - Not accessible							No visibility from main entry. Limited transparency. Principal would like the library expanded.	
	2 Unsatisfactory - Limited access, difficult to find, no transparency								
	3 Average - Adequate accessibility, needs updates or renovations to function well								
	4 Satisfactory - Accessible, easy to find, good transparency, good condition								
	5 Very Satisfactory - Accessible, easy to find, excellent transparency, excellent condition								
	N/A Does not apply								
12.2	How well does the Library/Media Center support quiet study?			3				Comments	1.00 3.00
	1 Very unsatisfactory - No quiet study spaces							One large area with some small group areas defined by furniture. No acoustic separation.	
	2 Unsatisfactory - One area in poor condition, poor acoustic privacy								
	3 Average - One or more areas provided, needing updates or renovations to function well								
	4 Satisfactory - Clusters or small rooms adjacent to media center, good condition, good acoustic privacy								
	5 Very Satisfactory - Multiple clusters or small rooms adjacent to media center, excellent condition, excellent acoustic privacy								
	N/A Does not apply								
12.3	How well does the Library/Media Center support social interaction?		2					Comments	1.00 2.00
	1 Very unsatisfactory - No space							Little informal seating. Virtually all desks and chairs. Not as open and flexible as the school would like.	
	2 Unsatisfactory - Too small, poor condition, layout and furnishings do not support informal interaction well								
	3 Average - Adequate size and condition, needs updates or renovations to function well.								
	4 Satisfactory - Good size, good condition, layout and furnishings support informal interactions								
	5 Very Satisfactory - Generous size, excellent condition, layout and furnishings support informal interactions								
	N/A Does not apply								
12.4	How well does the Library/Media Center support collaborative work in small groups (4-8 students)?		2					Comments	1.00 2.00
	1 Very unsatisfactory - No breakout rooms, no flexible furniture, no support							One area with several spaces defined by furniture.	
	2 Unsatisfactory - Too small, one area, poor condition								
	3 Average - Adequate size, multiple areas provided, needing updates or renovations to function well								
	4 Satisfactory - Clusters or small rooms adjacent to media center, flexible furniture, good condition								
	5 Very Satisfactory - Multiple clusters or small rooms adjacent to media center, flexible furniture, excellent condition								
	N/A Does not apply								

12 - Media Resources - Continued		1	2	3	4	5	N/A			
12.5	How well does the Library/Media Center support collaborative work in larger groups (10-25)?			3				Comments	1.00 <b>3.00</b>	
1	Very unsatisfactory - No gathering areas							Large area and mobile furniture mean area can be reconfigured quickly. For this to be successful, the library would have to get rid of a lot of books.		
2	Unsatisfactory - Too small, one common space, limited seating, poor condition									
3	Average - Adequate size, one common space, needs updates or renovations to function well									
4	Satisfactory - Good size, multiple common spaces with seating, good condition									
5	Very Satisfactory - Generous size, multiple commons spaces with seating, excellent condition									
N/A	Does not apply									
12.6	How well does the Library/Media Center support technology?			3				Comments	1.00 <b>3.00</b>	
1	Very unsatisfactory - No vis comm tools							Mix of old and new. Mobile TV on cart and small traditional projector screens.		
2	Unsatisfactory - Outdated, poorly functioning, or insufficient									
3	Good - Mix of old and new whiteboards/projectors/etc.									
4	Satisfactory - Projectors, marker boards, smart boards in most spaces - good condition									
5	Very Satisfactory - Projectors, marker boards, smart boards in most spaces - new condition									
N/A	Does not apply									
13 - Technology		1	2	3	4	5	N/A	20.00 <b>55%</b>		
13.1	How well equipped are the facilities with instructional technology?			3				Comments	1.00 <b>3.00</b>	
1	Very unsatisfactory - Limited to no technology present in instructional spaces							TVs on carts. Projector and projector screens.		
2	Unsatisfactory - One type of technology present									
3	Average - Multiple types of technology, smart boards, poor condition, limited to only certain areas of school									
4	Satisfactory - Multiple types of technology, smart boards, good condition.									
5	Very Satisfactory - Multiple types of technology, smart boards, excellent condition									
N/A	Does not apply									
13.2	Is there an adequate number of power and data outlets in learning spaces?		2					Comments	1.00 <b>2.00</b>	
1	Very unsatisfactory - Outlet configuration does not support digital devices throughout school (1 per wall)							2 per wall		
2	Unsatisfactory - Outlet configuration support digital devices only in certain areas of school (2 per wall)									
3	Average - Outlet configuration support digital devices but not enough capacity throughout school (3 per wall)									
4	Satisfactory - Outlet configuration support digital devices with adequate coverage and capacity throughout school (>3 per wall)									
5	Very Satisfactory - Excellent outlet configuration to support digital devices throughout school (>3 per wall)									
N/A	Does not apply									

13 - Technology (cont.)		1	2	3	4	5	N/A	Comments				
13.3	Are there adequate charging locations for devices?			3						1.00	<b>3.00</b>	
1	Very unsatisfactory - No centralized charging location							Mobile charging carts present in computer lab				
2	Unsatisfactory - Centralized charging location, but inadequate in size for number of devices											
3	Average - Charging cart or tower but not adequately sized for number of devices											
4	Satisfactory - Charging cart or tower not centralized											
5	Very Satisfactory - Charging cart or tower located centralized location. Excellent condition											
N/A	Does not apply											
13.4	Is there adequate AV for presentations spaces – cafeteria and gym?			3						1.00	<b>3.00</b>	
1	Very unsatisfactory - AV not present in one or more space							Audio system in gym/stage area only. No projector present				
2	Unsatisfactory - AV undersized for room, poor condition											
3	Average - Adequately sized / poor condition OR AV undersized / adequate condition											
4	Satisfactory - Good size, good condition											
5	Very Satisfactory - Generous sized, excellent condition											
N/A	Does not apply											
13.5	Is there digital media signage at the reception area?	1								0.00	<b>0.00</b>	
1	Very unsatisfactory - No digital media present in reception area							temporary digital display outside of admin. The school would like a built-in digital display screen in lobby and in office.				
2	Unsatisfactory - Undersized, poor condition											
3	Average - Adequately sized / poor condition OR undersized / adequate condition											
4	Satisfactory - Media signage present, good sized, good condition											
5	Very Satisfactory - Generously sized, excellent condition											
N/A	Does not apply											

