

Educational Suitability Summary Report

Langford Elementary School

Date: 02/01/2021

Score 57% Average

Langford Elementary School, serving an enrollment of approximately 500 students in southeast Austin, is a neighborhood school built in 1980 with additions occurring in subsequent years. The building is approximately 78,500 square feet and sits on 10 acres.

There are two areas for pickup and drop-off in the front and back of the school, but both have limited stack space. Visitor, faculty and administration parking is limited. It is typical for parents and visitors and staff to park in the neighborhood.

The learning spaces are set up in pods off the main corridor grouping six studios in a pod. There is a semi-circular hallway connecting the studios to the main corridor. There are a few studios without windows due to this configuration. In the center of each pod are the restrooms, a multipurpose room, storage and workroom. There is opportunity for breakout sessions in the multipurpose room, which appears to currently be used as an office, but there is limited visibility into the studios. The newer studios toward the back of the school have dedicated breakout areas and ample collaboration space.

The cafeteria and gym, which can open into one space for larger events, cannot be accessed for after-hours functions while keeping the rest of the school secured. The library is a good size and is in good condition, but its location in the center of campus makes it difficult to use for after-hours events.

Interview Overview

An interview was conducted virtually with Principal Castillo, teachers and staff to discuss the campus conditions and areas for improvement. Generally, they think most of the campus is functioning well. Technology and outdoor learning were big concerns during the discussion. Spaces they would like to enlarge include the cafeteria, a community room and a life skills studio. There are some programs and spaces that are missing, including a maker space, parent rooms and staff care.

The campus has some outdoor areas, but these are not fully utilized and need development to function well. Teachers expressed that shading and informal seating are most needed.

Due to the age of the school, outlets, power and charging stations are insufficient. The campus has a science lab and a computer lab, but these spaces are inadequate and need upgrades, including movable furniture, device storage, displays and bulletin boards.

Some minor pest issues were reported during the interview. Acoustic conditions throughout the school are satisfactory. Staff would like more space for indoor bicycle storage.

Assessment Findings

The Educational Suitability Assessment of Langford Elementary School earned a 57% overall score and places the campus in a category of Average. The assessment consists of seven General Building categories and seven Academic categories to determine areas that need more attention.

Unsatisfactory Categories (36-50%):

General Building

Score is unsatisfactory.

There is ample hallway space, but pod configurations create acoustical issues. The school configuration does not allow for after-hours functions without full access to the school.

Academics & Learning

Score is unsatisfactory.

Studios are undersized and approximately 25% of studios do not have windows or views to the exterior. There are two life skills studios provided with a washer and dryer in a shared space. The pod configurations allow for small group collaboration in the shared corridor. The new studio building has dedicated small group spaces.

PE and Wellness

Score is unsatisfactory.

There is limited storage for gymnasium and no direct access to outdoor play areas. The gym is undersized.

Food Services

Score is unsatisfactory.

Cafeteria is about 1,300 square feet undersized based on the Ed Spec and the campus capacity. The kitchen is adequately sized, but there is only one serving line. The kitchen has direct connection to dumpsters. The cafeteria currently has one type of seating provided.

Average Categories (51-65%):

Exterior

Score is average.

Site circulation is separate between vehicle, buses and pedestrians but stack space is limited. Signage is average. The school does not have a digital marquee.

Outdoor Learning and Activity

Score is average.

Active playgrounds have some shade but are not fully covered. No outdoor learning spaces were observed. School has some spaces that could be developed to become outdoor learning, but no shading or proper seating were observed.

Security

Score is average.


Environmental Quality

Score is average.

The pod configurations create acoustical challenges. There are interior studios that do not have access to daylight or views to the exterior. No pest or rodent problem was evident at time of the assessment but was mentioned in the interview.

Media Resources

Score is average.

There is limited visual connection to the school. Library is an ample size. Furniture is bulky and not easily reconfigurable to accommodate different group sizes. There are no dedicated group or breakout spaces.

Technology

Score is average.

Studios are equipped with portable TV screens and projectors. An overhead projector is provided in the cafeteria. The gym does not have a projector and only an average size portable screen is provided.

Administration Spaces

Score is average.

Administrative spaces have good visual connection to the entrance. Administration space needs updates or renovations to feel more welcoming. No seating available at reception desk.

Satisfactory Categories (66-80%):**Controllability of Systems**

Score is satisfactory.

Studios have thermostat controls. Studios with windows have mini blinds that are in average shape. The lighting controls in the studios are a two-switch system.

Furniture, Fixtures, Equipment

Score is satisfactory.

Furniture appears to be in good condition. Most studios allow for multiple configurations.

Visual and Performing Arts

Score is satisfactory.

Stage area is adequate in size but needs A/V and outlet upgrades to function better. Art room needs more storage.

Supporting Photographs

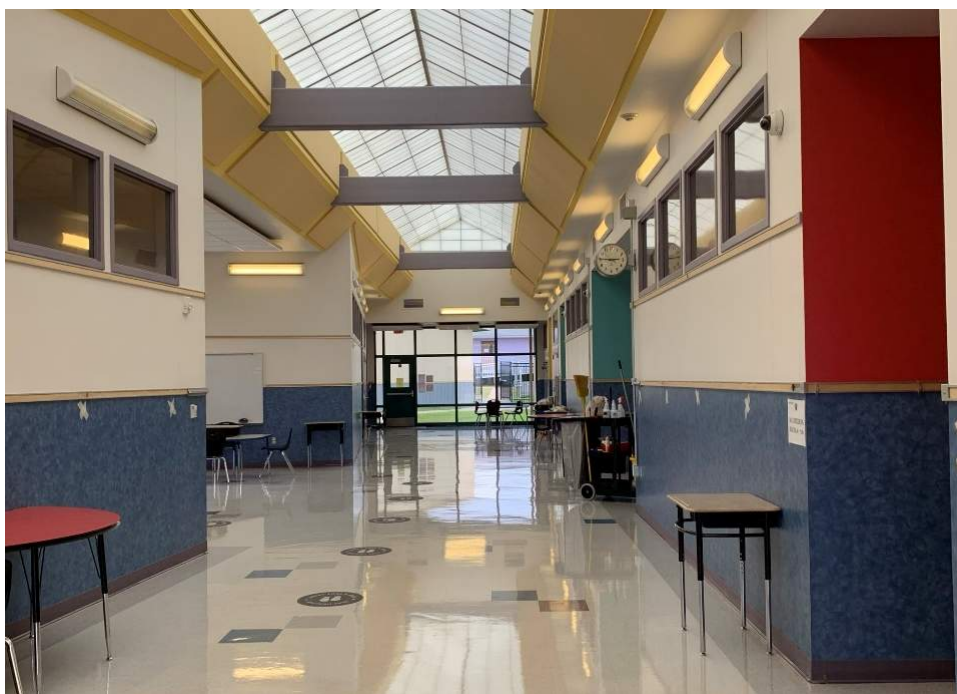


No separate marquee or directional signage around entrance; side fences are damaged.



Cafeteria is undersized based on campus capacity. There is no access to outdoor dining and finishes and furniture are in average condition. The kitchen is adequately sized. Stage is adequate but lacks dedicated storage.

Supporting Photographs



Collaboration areas and circulation space in annex building have ample daylight. Whiteboards and furniture are provided to accommodate small groups.



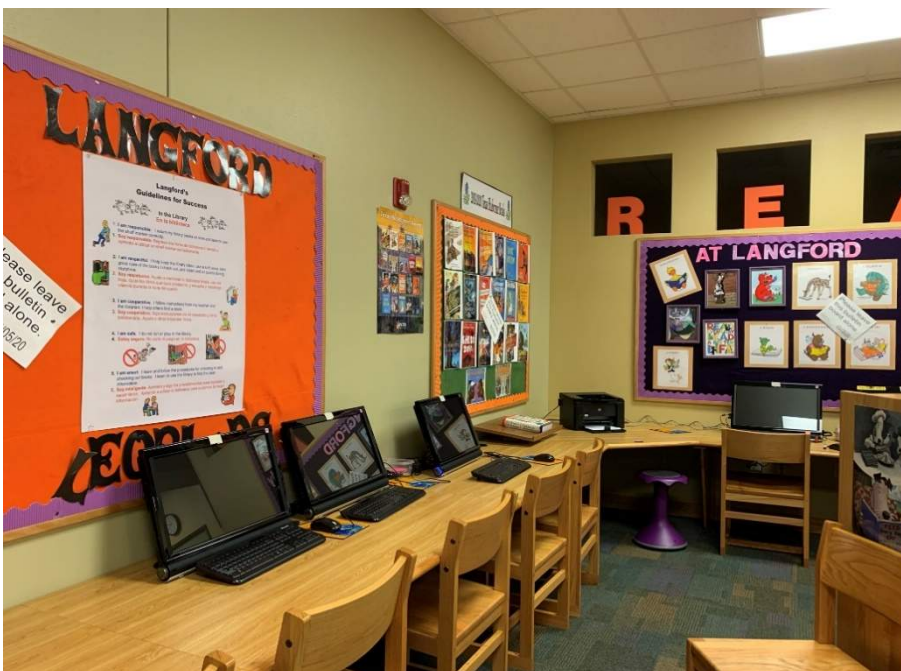
Gym is undersized and does not have sufficient storage space.

Educational Suitability Summary Report
Langford Elementary School

Supporting Photographs



Media Center: Library is in average condition and can support group or individualized study, but most furniture is not easily movable.



Media Center: Technology is well equipped, but more outlets are needed.

Supporting Photographs



Studios are adequately sized; no natural daylight in approximately 25% of the studios; acoustic condition is good; technology devices are well equipped in most studios.



Administration: Reception area requires updates to feel more welcoming.

Supporting Photographs



School does not support outdoor studios. [REDACTED] no furniture for students is provided; maintenance and updates are needed.



Computer Lab: Access to power outlets is unsatisfactory.



Austin ISD Educational Suitability Assessment Criteria

General Building

School Name

Langford Elementary School

Walk Attendees:

Carlos Cruz, Lily Zhang

Date:

01.28.21

1 - Exterior		1	2	3	4	5	N/A	8.75	60%	
1.1	Does the site permit desirable separation of vehicular, bus and pedestrian traffic?			3				Comments	1.00	3.00
	1 Very unsatisfactory - Bus, car and pedestrian all happen at the same location							Site circulation is separate between vehicle, buses and pedestrians but stack space is limited.		
	2 Unsatisfactory - Cars and buses mix, pedestrians are separated									
	3 Average - Buses, cars, and pedestrians are separate but stack space is small									
	4 Satisfactory - Buses, cars, and pedestrians are separate but drop off does not have a canopy or a holding place like a commons or cafeteria									
	5 Very satisfactory - Buses, cars, and pedestrians are separate and drop off area has a canopy and destination									
	N/A Does not apply									
1.2	Is the building easily identified with appropriate signage and community wayfinding?			3				Comments	0.25	0.75
	1 Very unsatisfactory - Campus has no signage / wayfinding							Signage is average. The school does not have a digital marquee.		
	2 Unsatisfactory - Signage/wayfinding is faded/hidden									
	3 Average - Signage / wayfinding visible but not apparent									
	4 Satisfactory - Signage / wayfinding is visible but not good condition									
	5 Very satisfactory - Signage and wayfinding is visible and easy to use									
	N/A Does not apply									

1 - Exterior (cont.)		1	2	3	4	5	N/A			
1.3	Is the dumpster accessible for trash / compost disposal?			3				Comments	0.50 1.50	
1	Very unsatisfactory - No compost present, route has obstacles (stairs, curbs, barriers) to dumpster									
2	Unsatisfactory - Compost is present. Route has obstacles to dumpster									
3	Average - Compost is present (<100' to cafeteria), Route to dumpster is free and clear but the two are not directly adjacent.									
4	Satisfactory - Compost and dumpster are directly adjacent and route is barrier free									
5	Very Satisfactory - Compost and dumpster are directly adjacent and route is barrier free. Dumpster are shaped / positioned so people of all heights can access it.									
N/A	Does not apply									
2 - Outdoor Learning and Activity		1	2	3	4	5	N/A			
2.1	Are outdoor studios and support spaces appropriately configured per the ed spec?	1						Comments	15.00 60% 1.00 1.00	
1	Very unsatisfactory - No dedicated outdoor studios								The school noted the need for security, shade and seating in order to create an outdoor classroom.	
2	Unsatisfactory - Too small, poor condition, disconnected from learning spaces, no flexibility, no shade provided									
3	Average - Adequate size, adequate condition, needs some renovations or updates to function well, 50% or less shade coverage over studio area									
4	Satisfactory - Good size, good condition, connected to learning spaces, good flexibility, more than 50% shade coverage over studio area									
5	Very satisfactory - Generous size, excellent condition, connected to learning spaces, excellent flexibility, full shade coverage over studio area									
N/A	Does not apply									
2.2	Are active playgrounds (elementary only) and support spaces configured per the ed spec?			3				Comments	1.00 3.00	
1	Very unsatisfactory - No dedicated active playground								One active playground has shade.	
2	Unsatisfactory - Too small, poor condition, no shade provided									
3	Average - Adequate size, adequate condition, needs some renovations or updates to function well, 50% or less shade coverage over play structure									
4	Satisfactory - Good size, good condition, more than 50% shade coverage over play structure									
5	Very satisfactory - Generous size, excellent condition, full shade coverage over play structure									
N/A	Does not apply									

2 - Outdoor Learning and Activity (cont)		1	2	3	4	5	N/A				
2.3	Are gardens and support spaces appropriately configured per the ed spec? (evaluation on infrastructure not condition of plants)	1							Comments	0.00	0.00
1	Very unsatisfactory - No dedicated gardens							Monitoring answer, does not affect score for Outdoor Learning and Activity. Principal's comment - Project management removed 2 portables which created a large space that will be used as a community/school garden.			
2	Unsatisfactory - Too small, poor condition, disconnected from learning spaces, no flexibility, no accessible water source										
3	Average - Adequate size, adequate condition, needs some renovations or updates to function well, water source is difficult to access										
4	Satisfactory - Good size, good condition, connected to learning spaces, good flexibility, water source is accessible with 100 ft hose										
5	Very Satisfactory - Generous size, excellent condition, connected to learning spaces, excellent flexibility, water source is less than 50ft from the garden or has irrigation										
N/A	Does not apply										
2.4	Are the rain gardens and/or cisterns appropriately configured per the ed spec?				4				Comments	0.00	0.00
1	Very unsatisfactory - No rain gardens or cisterns							Monitoring answer, does not affect score for Outdoor Learning and Activity. Principal's comment - There is a large rain water cistern outside of the 700 wing and we are also on the list for UT students who work on rain gardens.			
2	Unsatisfactory - Too small, poor condition, not functioning, disconnected										
3	Average - Adequate size, adequate condition, is connected, needs some renovations or updates to function well										
4	Satisfactory - Good size, good condition, functions properly										
5	Very Satisfactory - Generous size, excellent condition, exceptional functionality, connected to learning spaces, educational signage provided										
N/A	Does not apply										
2.5	Does the school have animal husbandry? (optional)	1							Comments	0.00	0.00
1	No										
5	Yes										
2.6	Does the school have nature loop trails? (optional)	1							Comments	0.00	0.00
1	No										
5	Yes										
2.7	Does the school have a learning pond? (optional)	1							Comments	0.00	0.00
1	No										
5	Yes										
2.8	Does the school have a grass play field and walking trail?					5			Comments	1.00	5.00
1	No										
5	Yes										

3 - General Building		1	2	3	4	5	N/A	11.25	44%	
3.1	Are interior circulation routes wide enough to safely and effectively accommodate student movement?				4			Comments	0.50	2.00
	1 Very unsatisfactory - Primary circulation is 5'-0" to 6'-0" wide									
	2 Unsatisfactory - Primary circulation is 6'-0" to 7'-0" wide									
	3 Average - Primary circulation is 7'-0" to 8'-0" wide									
	4 Satisfactory - Primary circulation is 8'-0"-10'-0" wide									
	5 Very satisfactory - Primary circulation is 10'-0"+ wide									
	N/A Does not apply									
3.2	Are community use areas arranged so that the school can allow night functions without full school access?	1						Comments	0.75	0.75
	1 Very unsatisfactory - Cafeteria, gym, and library cannot be accessed after hours								The school configuration does not allow for after-hours functions without full access to the school.	
	2 Unsatisfactory - Only one of the public spaces (Cafeteria, Gym and Library) can be accessed from parking and secured after hours								Principal's comment - There are 4 major projects that construction management has approved to increase school visibility and community participation. The projects include: an updated and large track, a soccer field, a mini-pitch for basketball and soccer and a roller skate park, as well as a walkway and entry points so that the community can access these areas after school.	
	3 Average - Only two of the public spaces can be accessed from parking and secured after hours									
	4 Satisfactory - All of the public spaces can be accessed from parking and secured from the rest of the building but not individually									
	5 Very satisfactory - Cafeteria, gym, and library can be accessed from parking and locked off from rest of campus for night/evening use with their own entrance									
	N/A Does not apply									
3.3	Is there a community room that is a dedicated meeting space outside of school function?		2					Comments	0.75	1.50
	1 Very unsatisfactory - No dedicated community room								The campus has a dedicated Parent Room, but not currently set up as a community room with after hours access.	
	2 Unsatisfactory - Community room but within school function, no access after school hours									
	3 Average - Community room, moderate size, but need some renovations or updates to function well									
	4 Satisfactory - Community room, good size /layout, meets needs /functions well									
	5 Very Satisfactory - Community room, generous size, nice condition, functions appropriately outside of school function									
	N/A Does not apply									
3.4	Does the general appearance of the school convey pride for the students and community?			3				Comments	0.25	0.75
	1 Very unsatisfactory - General appearance is poor									
	2 Unsatisfactory - General appearance is aged but ok									
	3 Average - General appearance is good									
	4 Satisfactory - General appearance shows pride in campus and student works									
	5 Very Unsatisfactory - General appearance shows pride in campus and student works and is welcoming to the community									
	N/A Does not apply									

5 - Environmental Quality		1	2	3	4	5	N/A	25.00	64%	
5.1	How are acoustics in studios in general?				4			Comments	1.00 4.00	
1	Very unsatisfactory - Recognized word/sound from adjacent studio/corridor							Ok acoustics		
2	Unsatisfactory - Audible sound from adjacent studio/corridor									
3	Average - Slight sound from outside room									
4	Satisfactory - Walls to deck insulated only white noise from mechanical system									
5	Very satisfactory - Able to hear quiet speaking from across the room									
N/A	Does not apply									
5.2	Is the studio artificial lighting adequate quality?			3				Comments	1.00 3.00	
1	Very unsatisfactory - Sporadic lights work, glare, less than 20 FC									
2	Unsatisfactory - 10-19 FC or serious glare									
3	Average- 20-29 FC minor glare									
4	Satisfactory - 30-39 FC and no glare									
5	Very satisfactory - 40+ FC and no glare									
N/A	Does not apply									
5.3	Is there access to natural light in studios?			3				Comments	1.00 3.00	
1	Very unsatisfactory - No learning spaces have natural light									
2	Unsatisfactory - 1-25% of learning spaces have natural light or windows are too small to let in light									
3	Average - 26-50% of learning spaces have natural light									
4	Satisfactory - 51-75% of learning spaces have natural light									
5	Very satisfactory - 76-100% of learning spaces have natural light									
N/A	Does not apply									
5.4	Is there access to outside views from learning spaces?			3				Comments	1.00 3.00	
1	Very unsatisfactory - No learning spaces have views							50% of studios do not have exterior views		
2	Unsatisfactory - 1-25% of learning spaces have views or windows are too small to see out									
3	Average - 26-50% of learning spaces have views									
4	Satisfactory - 51-75% of learning spaces have views									
5	Very satisfactory - 76-100% of learning spaces have views									
N/A	Does not apply									

5 - Environmental Quality (cont.)		1	2	3	4	5	N/A				
5.5	Does the building have odor or pest problems?			3				Comments	1.00	3.00	
1	Very unsatisfactory - Evidence of both pests and odors							None present during walk, but mentioned in interview.			
2	Unsatisfactory - Evidence of pests or odors										
3	Average - Limited evidence of pests, no odors										
4	Satisfactory - No evidence of pests / odors, school cleanliness in good condition										
5	Very Satisfactory - No evidence, school cleanliness in excellent condition										
N/A	Does not apply										
6 - Controllability of Systems		1	2	3	4	5	N/A		12.50	68%	
6.1	Does the studio thermostat allow for individual control?					5		Comments	0.50	2.50	
1	No										
5	Yes										
6.2	Are shades provided to control natural light in learning spaces?				4			Comments	1.00	4.00	
1	Very unsatisfactory - No, windows are covered with boards/paper										
2	Unsatisfactory - No, windows have no light control										
3	Average - Yes, but poor condition blinds										
4	Satisfactory - Yes, blinds										
5	Very satisfactory - Blackout shades										
N/A	Does not apply										
6.3	What is the quality of lighting controls in the studios?		2					Comments	1.00	2.00	
1	Very unsatisfactory - Single switch only per room							2 switch system			
2	Unsatisfactory - Alternating rows switch off										
3	Average - Alternating lamps in single fixtures switch off										
4	Satisfactory - Tri level switching										
5	Very satisfactory - Dimmable										
N/A	Does not apply										

7 - Furniture, Fixtures & Equipment		1	2	3	4	5	N/A	18.75	75%
7.1	What is the current condition of the furniture?				4			Comments	0.75 3.00
1	Very unsatisfactory - Damaged or broken, non-functioning								
2	Unsatisfactory - Torn/ bent/ wrong size								
3	Average - Scratched/dented/marked								
4	Satisfactory - Not new, but sturdy and clean								
5	Very satisfactory - New								
N/A	Does not apply								
7.2	Are a variety of furniture types being accommodated throughout the school - learning commons, dining commons, other multi-use spaces?			3				Comments	1.00 3.00
1	Very Unsatisfactory - Same furniture used in all spaces								
2	Unsatisfactory - Furniture variety in one multi-use space								
3	Average - Furniture variety in more than one multi-use space								
4	Satisfactory - All multi-use spaces have greater than one type of furniture								
5	Very satisfactory - All multi-use spaces have greater than two types of furniture								
N/A	Does not apply								
7.3	How well does furniture accommodate rapid reconfiguration of a space?				4			Comments	1.00 4.00
1	Very Unsatisfactory - Furniture is fixed or very heavy	Except cafeteria							
2	Unsatisfactory - Furniture does not allow desks to be configured as individuals, small groups, or large groups								
3	Average - Mix of furniture that can reconfigure but is cumbersome to move								
4	Satisfactory - Furniture is flexible for multiple configurations of space								
5	Very satisfactory - Furniture is flexible for multiple configurations of space, easy to move and stack								
N/A	Does not apply								
7.4	Is the furniture ergonomic and size appropriate for grade level?				4			Comments	1.00 4.00
1	Very unsatisfactory - Desk with attached chair combinations too small for grade level								
2	Unsatisfactory - Desk with attached chair combinations								
3	Average - Mix of studios with tables/loose chairs and desks with fixed seats								
4	Very satisfactory - Tables with loose chairs								
5	Very satisfactory - Tables with loose chairs that allow students to be active								
N/A	Does not apply								

Zero Waste		1	2	3	4	5	N/A	5.00	70%	
Do studios and corridors have blue recycle bins with bilingual instructions and/or image sorting instructions?				3				Comments	0.50 1.50	
1	Very unsatisfactory - There are no recycling and landfill bins and signage are sparse or infrequent. OR there are only landfill bins with no recycling bins.							No green bins in classrooms and cafeteria. Staff separate in cafeteria		
2	Unsatisfactory - Bins and signage are sparse or infrequent and/or lack clear signage.									
3	Average - 50% of corridors and studios have both a landfill bin and a recycle bin in an accessible location. The containers have clear signage.									
4	Satisfactory - 75% of studios and corridors have a visible landfill and recycle collection containers in an accessible location. The containers have clear signage.									
5	Very satisfactory - All studios / corridors (100%) have visible landfill and recycle collection containers in accessible locations. The containers have clear signage, and the style and format is consistent and uniform across campus.									
N/A	Does not apply									
Does the cafeteria (or wherever meals are served) have at least one of each: green compost bin, blue recycle bin, and landfill bin? Are the bins labelled clearly with bilingual and/or image sorting?					4			Comments	0.50 2.00	
1	Very unsatisfactory- There may be landfill bins, but there are no compost and/or recycle bins. There is not clear sorting signage.							Does not affect overall score.		
2	Unsatisfactory- Recycle, landfill, and compost bins are present, but the bins are scattered and no co-located next to one another. Signage is absent or inconsistent.									
3	Average- There is at least one waste station with all three bins (recycle, compost, landfill) located with close proximity to one another. The signage is visible and consistent.									
4	Satisfactory- There are several waste stations as described above									
5	Very Satisfactory - There are several waste stations as described above, and additional signage in the cafeteria that encourages recycling/composting.									
N/A	Does not apply									



Austin ISD Educational Suitability Assessment Criteria

Academics - Elementary School

School Name

Langford Elementary School

Walk Attendees:

Carlos Cruz and Lily Zhang

Date:

1.25.21

8 - Academics & Learning		1	2	3	4	5	N/A	70.00	50%	
8.1	Are studios appropriately configured per the ed spec?		2					Comments	1.00 2.00	
1	Very unsatisfactory - Too small, no flexibility, disconnected	Some studios are undersized at 780 to 800SF. Studios typically have shared breakout space and offices arranged in pods. Interior studios do not have windows. Older annex does not have pods.								
2	Unsatisfactory - Too small, only one area for all teaching methods, limited flexibility, disconnected									
3	Neutral - Adequate size, multiple areas for different teaching methods, adequate flexibility, limited transparency and connection to other studios and shared learning spaces, needs updates or renovations to function well.									
4	Satisfactory - Good size, multiple areas for different teaching methods, good flexibility, good transparency and connection to other studios and shared learning spaces									
5	Very Satisfactory - Generous size, multiple areas for different teaching methods, excellent flexibility, generous display area and visual teaching tools, excellent transparency and connection with other studios and shared learning spaces									
N/A	Does not apply									
8.2	Do Pre-K and Kinder have appropriate support spaces such as restrooms and storage per the ed spec?			3				Comments	1.00 3.00	
1	Very unsatisfactory - None provided	Restrooms disconnected and minimal windows.								
2	Unsatisfactory - Too small, disconnected, poor condition									
3	Neutral - Adequate size, average condition, needs updates or renovations to function well									
4	Satisfactory - Good size, connected, good condition									
5	Very Satisfactory - Generous size, connected, excellent condition									
N/A	Does not apply									

8 - Academics & Learning (cont.)		1	2	3	4	5	N/A			
8.3	Do studios have appropriate support spaces such as storage per the ed spec?				4			Comments	1.00 4.00	
	1 Very unsatisfactory - None provided							Built-in cabinets and pre-K has closets.		
	2 Unsatisfactory - Too small, disconnected, poor condition									
	3 Neutral - Adequate size, average condition, needs updates or renovations to function well									
	4 Satisfactory - Good size, connected, good condition									
	5 Very Satisfactory - Generous size, connected, excellent condition									
	N/A Does not apply									
8.4	Do typical learning neighborhoods have small group rooms and open collaboration space?				4			Comments	1.00 4.00	
	1 Very unsatisfactory - No breakout rooms or open collaboration spaces are provided							Good transparency, with display screens, marker boards equipped, flexible table and chairs are provided.		
	2 Unsatisfactory - Too small or too few, poor condition, no flexibility, lacks visual connection to learning neighborhood, poor acoustic privacy									
	3 Average - Adequate size, adequate condition, needs some renovations or updates to function well									
	4 Satisfactory - Good size, good condition and flexibility, transparency and connection to learning neighborhood, acoustic privacy									
	5 Very Satisfactory - Generous size, excellent condition and flexibility, transparency and connection to learning neighborhood, acoustic privacy									
	N/A Does not apply									
8.5	Are general studios large enough to support project-based learning and multiple teaching modalities?		2					Comments	1.00 2.00	
	1 Very unsatisfactory - Too small, no flexibility, does not support project-based learning									
	2 Unsatisfactory - Undersized, decentralized resources, limited flexibility									
	3 Average - Adequate size, needs some renovations or updates to function well									
	4 Satisfactory - Good size, centralized resources, good flexibility									
	5 Very Satisfactory - Generous size, centralized project resources, excellent flexibility									
	N/A Does not apply									

8 - Academics & Learning (cont.)		1	2	3	4	5	N/A			
8.6	Are Maker Spaces and support spaces appropriately configured per the ed spec?	1						Comments	1.00 1.00	
1	Very unsatisfactory - No dedicated maker spaces							Currently the school is using Science Building as a maker space.		
2	Unsatisfactory - Too small, poor condition, disconnected from learning spaces, no flexibility									
3	Average - Adequate size, adequate condition, needs some renovations or updates to function well									
4	Satisfactory - Good size, good condition, connected to learning spaces									
5	Very Satisfactory - Generous size, excellent condition, connected to learning spaces									
N/A	Does not apply									
8.7	Is there a Professional Learning Center in the learning neighborhood?	1						Comments	1.00 1.00	
1	Very unsatisfactory - No dedicated space for Professional Learning Center									
2	Unsatisfactory - Too small, poor condition, disconnected									
3	Average - Adequate size, adequate condition, needs some renovations or updates to function well									
4	Satisfactory - Good size, good condition, connected									
5	Very Satisfactory - Generous size, excellent condition, connected									
N/A	Does not apply									
8.8	Is there a dedicated science room and support space?					5		Comments	0.00 0.00	
1	No							Monitoring answer, but doesn't affect overall score. Science building addition.		
5	Yes									
8.9	Are there adequate places to display the evidence and artifacts of learning (both 2D and 3D)?			3				Comments	1.00 3.00	
1	Very unsatisfactory - No dedicated space							Plenty of 2D display locations		
2	Unsatisfactory - Too small, non-dedicated, poor condition									
3	Average - Adequate size, adequate condition, needs updates or renovations to function well									
4	Satisfactory - Good size, good condition									
5	Very Satisfactory - Generous size, excellent condition									
N/A	Does not apply									

8 - Academics & Learning (cont.)		1	2	3	4	5	N/A			
8.10	Does the building provide adequate opportunities for students/teachers to collaborate in varying group sizes?			3				Comments	1.00 3.00	
1	Very unsatisfactory - No space to support collaboration in various sizes.							Learning neighborhoods have collaboration space.		
2	Unsatisfactory - Too small, inflexible, only one option, does not support a variety of group sizes									
3	Average - Adequate space for collaboration, needs updates or renovations to function well.									
4	Satisfactory - Good size, good condition, multiple options to support a variety of group sizes									
5	Very Satisfactory - Generous size, excellent condition, multiple options to support a variety of group sizes									
N/A	Does not apply									
8.11	Does the building provide opportunities for informal interaction?			3				Comments	1.00 3.00	
1	Very unsatisfactory - No space									
2	Unsatisfactory - Too small, poor condition, layout and furnishings do not support informal interaction well									
3	Average - Adequate size and condition, needs updates or renovations to function well.									
4	Satisfactory - Good size, good condition, layout and furnishings support informal interactions									
5	Very Satisfactory - Generous size, excellent condition, layout and furnishings support informal interactions									
N/A	Does not apply									
8.12	Does the learning neighborhood / building provide adequate opportunities for students to work independently?			3				Comments	1.00 3.00	
1	Very unsatisfactory - No breakout rooms/small study spaces							Common area the only space. Used as computer lab.		
2	Unsatisfactory - Too small, poor condition, no acoustic privacy, only one space for independent work, disconnected from learning neighborhood									
3	Average - Adequate size and condition, needs updates or renovations to function well.									
4	Satisfactory - Good size and condition, acoustic privacy, variety of independent work space options, connected to learning neighborhood									
5	Very Satisfactory - Generous size, excellent condition, acoustic privacy, variety of independent work space options, connected to learning neighborhood									
N/A	Does not apply									

8 - Academics & Learning (cont.)												
8.13	Are Special Education spaces appropriately configured per the ed spec?			3						Comments	1.00	3.00
1	Very unsatisfactory - Too small, no flexibility, disconnected									2 life skills rooms, connected, with shared breakout space; washer and dryer shared.		
2	Unsatisfactory - Too small, only one area for all teaching methods, limited flexibility, disconnected											
3	Neutral - Adequate size, multiple areas for different teaching methods, adequate flexibility, limited transparency and connection to other studios and shared learning spaces, needs updates or renovations to function well.											
4	Satisfactory - Good size, multiple areas for different teaching methods, good flexibility, good transparency and connection to other studios and shared learning spaces											
5	Very Satisfactory - Generous size, multiple areas for different teaching methods, excellent flexibility, generous display area and visual teaching tools, excellent transparency and connection with other studios and shared learning spaces											
N/A	Does not apply											
8.14	Are Special Education support spaces, such as storage, space for washer/dryer, appropriately configured per the ed spec?		2							Comments	1.00	2.00
1	Very unsatisfactory - None provided									Washer/dryer shared. Limited storage.		
2	Unsatisfactory - Too small, disconnected, poor condition											
3	Neutral - Adequate size, average condition, needs updates or renovations to function well											
4	Satisfactory - Good size, connected, good condition											
5	Very Satisfactory - Generous size, connected, excellent condition											
N/A	Does not apply											
8.15	Are Accessible restrooms and changing rooms readily available to the Special Education spaces?	1								Comments	1.00	1.00
1	No											
5	Yes											

9 - Visual and Performing Arts		1	2	3	4	5	N/A	15.00	60%	
9.1	Are music spaces and the cafeteria stage appropriately configured per the ed spec?			3				Comments	1.00 3.00	
	1 Very unsatisfactory - Too small, missing program spaces							A/V and outlets need improvements on the stage area.		
	2 Unsatisfactory - Too small, poor condition									
	3 Neutral - Adequate size, adequate condition, needs updates or renovations to function well.									
	4 Satisfactory - Good size, good condition									
	5 Very Satisfactory - Generous size, excellent condition									
	N/A Does not apply									
9.2	Are music and performance storage spaces appropriately configured per the ed spec?			3				Comments	1.00 3.00	
	1 Very unsatisfactory - None provided									
	2 Unsatisfactory - Too small, disconnected, poor condition									
	3 Neutral - Adequate size, average condition, needs updates or renovations to function well									
	4 Satisfactory - Good size, connected, good condition									
	5 Very Satisfactory - Generous size, connected, excellent condition									
	N/A Does not apply									
9.3	Are Visual Arts spaces and storage appropriately configured per the ed spec?			3				Comments	1.00 3.00	
	1 Very unsatisfactory - Too small, missing program spaces							Art space is an adequate size, good condition, and located properly, but lacks adequate storage.		
	2 Unsatisfactory - Too small, poor condition									
	3 Average - Adequate size, adequate condition, needs some renovations or updates to function well									
	4 Satisfactory - Good size, good condition									
	5 Very Satisfactory - Generous size, excellent condition									
	N/A Does not apply									

10 - PE and Wellness		1	2	3	4	5	N/A	10.00	40%
10.1	Does the campus meet the ed spec standard for physical education program spaces?		2					Comments	1.00 2.00
	1 Very unsatisfactory - Too small, missing program spaces 2 Unsatisfactory - Too small, poor condition 3 Average - Adequate size, adequate condition, needs some renovations or updates to function well 4 Satisfactory - Good size, good condition 5 Very Satisfactory - Generous size, excellent condition N/A Does not apply	Gym is undersized at 2,400 SF. The school noted that they have many outdoor physical activity spaces: track, soccer field, skate park.							
10.2	Are the physical education storage spaces appropriately configured per the ed spec?		2					Comments	1.00 2.00
	1 Very unsatisfactory - None provided 2 Unsatisfactory - Too small, disconnected, poor condition 3 Neutral - Adequate size, average condition, needs updates or renovations to function well 4 Satisfactory - Good size, connected, good condition 5 Very Satisfactory - Generous size, connected, excellent condition N/A Does not apply	Storage room is inadequate							
11 - Food Services		1	2	3	4	5	N/A	10.00	50%
11.1	Is the Dining Commons appropriately configured per the ed spec?		2					Comments	1.00 2.00
	1 Very unsatisfactory - Too small, missing program spaces 2 Unsatisfactory - Too small, poor condition, only one option for eating space provided, inadequate circulation 3 Average - Adequate size and condition, needs updates or renovations to function well 4 Satisfactory - Good size and condition, good circulation, multiple options for eating space (ex: connection to outdoor eating space) 5 Very Satisfactory - Generous size, excellent condition and circulation, multiple options for eating space (ex: connection to outdoor eating space) N/A Does not apply	Cafeteria is undersized for capacity. Should be 4,100 SF based on campus capacity, currently 2,800 SF.							
11.2	Are the Food Services support spaces appropriately configured per the ed spec?			3				Comments	1.00 3.00
	1 Very unsatisfactory - None provided 2 Unsatisfactory - Too small, disconnected, poor condition 3 Neutral - Adequate size, average condition, needs updates or renovations to function well 4 Satisfactory - Good size, connected, good condition 5 Very Satisfactory - Generous size, connected, excellent condition N/A Does not apply	Kitchen and support is adequately sized. There is a storage room next to stage but undersized.							

12 - Media Resources		1	2	3	4	5	N/A	30.00	53%
12.1	Is the Library/Media Center easily accessible for the occupants and visitors to the school?		2					Comments	1.00 2.00
	1 Very unsatisfactory - Not accessible 2 Unsatisfactory - Limited access, difficult to find, no transparency 3 Average - Adequate accessibility, needs updates or renovations to function well 4 Satisfactory - Accessible, easy to find, good transparency, good condition 5 Very Satisfactory - Accessible, easy to find, excellent transparency, excellent condition N/A Does not apply							Located in back of school in center. Limited transparency to rest of school and cannot be accessed after-hours from the rest of the school.	
12.2	How well does the Library/Media Center support quiet study?		2					Comments	1.00 2.00
	1 Very unsatisfactory - No quiet study spaces 2 Unsatisfactory - One area in poor condition, poor acoustic privacy 3 Average - One or more areas provided, needing updates or renovations to function well 4 Satisfactory - Clusters or small rooms adjacent to media center, good condition, good acoustic privacy 5 Very Satisfactory - Multiple clusters or small rooms adjacent to media center, excellent condition, excellent acoustic privacy N/A Does not apply							Quiet study is difficult in large open space.	
12.3	How well does the Library/Media Center support social interaction?			3				Comments	1.00 3.00
	1 Very unsatisfactory - No space 2 Unsatisfactory - Too small, poor condition, layout and furnishings do not support informal interaction well 3 Average - Adequate size and condition, needs updates or renovations to function well. 4 Satisfactory - Good size, good condition, layout and furnishings support informal interactions 5 Very Satisfactory - Generous size, excellent condition, layout and furnishings support informal interactions N/A Does not apply								
12.4	How well does the Library/Media Center support collaborative work in small groups (4-8 students)?			3				Comments	1.00 3.00
	1 Very unsatisfactory - No breakout rooms, no flexible furniture, no support 2 Unsatisfactory - Too small, one area, poor condition 3 Average - Adequate size, multiple areas provided, needing updates or renovations to function well 4 Satisfactory - Clusters or small rooms adjacent to media center, flexible furniture, good condition 5 Very Satisfactory - Multiple clusters or small rooms adjacent to media center, flexible furniture, excellent condition N/A Does not apply							Needs updated furniture to function well.	

12 - Media Resources - Continued		1	2	3	4	5	N/A			
12.5	How well does the Library/Media Center support collaborative work in larger groups (10-25)?			3				Comments	1.00 3.00	
1	Very unsatisfactory - No gathering areas							Accommodates larger group of students, but furniture is heavy and cumbersome to move.		
2	Unsatisfactory - Too small, one common space, limited seating, poor condition									
3	Average - Adequate size, one common space, needs updates or renovations to function well									
4	Satisfactory - Good size, multiple common spaces with seating, good condition									
5	Very Satisfactory - Generous size, multiple commons spaces with seating, excellent condition									
N/A	Does not apply									
12.6	How well does the Library/Media Center support technology?			3				Comments	1.00 3.00	
1	Very unsatisfactory - No vis comm tools							Projector screen and portable screen		
2	Unsatisfactory - Outdated, poorly functioning, or insufficient									
3	Good - Mix of old and new whiteboards/projectors/etc.									
4	Satisfactory - Projectors, marker boards, smart boards in most spaces - good condition									
5	Very Satisfactory - Projectors, marker boards, smart boards in most spaces - new condition									
N/A	Does not apply									
13 - Technology		1	2	3	4	5	N/A		20.00 55%	
13.1	How well equipped are the facilities with instructional technology?				4			Comments	1.00 4.00	
1	Very unsatisfactory - Limited to no technology present in instructional spaces							All studios have new movable digital display.		
2	Unsatisfactory - One type of technology present									
3	Average - Multiple types of technology, smart boards, poor condition, limited to only certain areas of school									
4	Satisfactory - Multiple types of technology, smart boards, good condition.									
5	Very Satisfactory - Multiple types of technology, smart boards, excellent condition									
N/A	Does not apply									
13.2	Is there an adequate number of power and data outlets in learning spaces?		2					Comments	1.00 2.00	
1	Very unsatisfactory - Outlet configuration does not support digital devices throughout school (1 per wall)									
2	Unsatisfactory - Outlet configuration support digital devices only in certain areas of school (2 per wall)									
3	Average - Outlet configuration support digital devices but not enough capacity throughout school (3 per wall)									
4	Satisfactory - Outlet configuration support digital devices with adequate coverage and capacity throughout school (>3 per wall)									
5	Very Satisfactory - Excellent outlet configuration to support digital devices throughout school (>3 per wall)									
N/A	Does not apply									

13 - Technology (cont.)		1	2	3	4	5	N/A			
13.3	Are there adequate charging locations for devices?		2					Comments	1.00 2.00	
1	Very unsatisfactory - No centralized charging location									
2	Unsatisfactory - Centralized charging location, but inadequate in size for number of devices									
3	Average - Charging cart or tower but not adequately sized for number of devices									
4	Satisfactory - Charging cart or tower not centralized									
5	Very Satisfactory - Charging cart or tower located centralized location. Excellent condition									
N/A	Does not apply									
13.4	Is there adequate AV for presentations spaces – cafeteria and gym?			3				Comments	1.00 3.00	
1	Very unsatisfactory - AV not present in one or more space							No overhead projector in gym, present in cafeteria. No outlets on stage for devices.		
2	Unsatisfactory - AV undersized for room, poor condition									
3	Average - Adequately sized / poor condition OR AV undersized / adequate condition									
4	Satisfactory - Good size, good condition									
5	Very Satisfactory - Generous sized, excellent condition									
N/A	Does not apply									
13.5	Is there digital media signage at the reception area?				4			Comments	0.00 0.00	
1	Very unsatisfactory - No digital media present in reception area									
2	Unsatisfactory - Undersized, poor condition									
3	Average - Adequately sized / poor condition OR undersized / adequate condition									
4	Satisfactory - Media signage present, good sized, good condition									
5	Very Satisfactory - Generously sized, excellent condition									
N/A	Does not apply									

