



## **Educational Suitability Summary Report**

Navarro Early College High School

Date: 12/14/2020

**Score 58% Average**

Navarro Early College High School, serving an enrollment of approximately 1,600 students in north Austin, is a large campus offering a majority of the CTE programs that AISD offers. The main building and the gymnasium were originally built in 1966. Over the 50-year lifetime of the school, there have been many stand-alone buildings constructed, including a science building, agriculture barn and CTE building. The entire campus has a total of 286,000 square feet on 30.5 acres. Due to the network of stand-alone buildings, the campus feels open and has a collegiate atmosphere. Updates to the landscape could elevate the campus grounds and the overall impression of the school.

The main building has a large, open-air courtyard and covered, exterior circulation between the studio clusters. Each studio cluster does not have visibility to the courtyard space. To make the exterior covered circulation space more utilized, furniture upgrades and power infrastructure are needed. The CTE programs use space throughout the campus. Evidence of these programs through 2D and 3D displays of learning artifacts is not present. Highlighting all the programs that the campus offers would increase visibility and knowledge of these programs for the students and visitors.

The campus has many portables and hosts several programs from them, including special education and the Graduation Preparatory Academy at Navarro. Many years ago, portables were placed on one of the athletics practice fields, which led to the current shortage of practice fields for the campus.

### **Interview Overview**

The interview took place on campus following the site assessment walk. Attendees included Principal Covin, Assistant Principal De La Cruz and Athletics Director Jacob Anderson. Interviewees expressed a large concern about the athletics facilities and in particular the condition of the sports fields. The conditions have caused athletes to become injured during practices and competitions due to uneven ground. The main field is particularly uneven and is not flat. The track has a 6-foot vertical change from one end to the other. The practice fields do not have irrigation, and it has been difficult to get grass established that will stand up to the wear and tear on a practice field. The school welcomes the community to use the track and field, but recently has had to prohibit use of the field to keep it in adequate condition for the sports teams.

The athletics building is a maze of hallways and locker rooms and does not meet the needs of a campus of 1,600 students. The weight room is being housed on the old stage for the main gym. The weight room can only fit about 30 students, and they need to accommodate around 100 students. The main gym does not have A/V, which is problematic for any game that the school hosts. The bleachers are old, and many times get out of adjustment and do not retract fully. The lockers in all locker rooms are so dated that the products and replacement parts have been discontinued, and as lockers break, they cannot be repaired. The coaches' offices are cramped and do not accommodate

**Perkins&Will**

**Educational Suitability Summary Report**  
Navarro Early College High School

all the coaches.

The group requested more permanent, organized storage solutions for athletic programs. Currently, temporary solutions (Conex) are being utilized for athletic storage throughout the campus.

There is a dedicated CTE building that houses many CTE programs. They requested that an industrial washer/dryer be provided. Many of the programs, such as welding, get clothing and aprons dirty. There is a residential washer/dryer, but the size and durability are inadequate. While the CTE rooms are generally in good working order, there are some places that need upgrades. There is insulation falling from the ceiling in the welding studio (Room 43).

The interviewees also expressed a desire for better infrastructure for setting up outdoor studios and more flexible, collaborative spaces for students to learn outside of the traditional studio. The space is there, particularly in the wide outdoor circulation spaces of the main building, which face the courtyards and are protected from weather. The old lockers need to be removed, and better outdoor furniture and access to power and data are needed to make the spaces functional.



All interviewees expressed pride in their school and the mission in educating and coaching students, and strategic upgrades, especially to athletics, would benefit the school greatly.

**Assessment Findings**

The Educational Suitability Assessment of Navarro Early College High School earned a 58% overall score and places the campus in a category of average. The assessment consists of seven General Building categories and eight Academic categories to determine areas that need more attention.

**Unsatisfactory Categories (36-50%):**

**General Building**

Score is unsatisfactory.

Interior circulation in studio clusters is tight at around 7 feet wide. The cafeteria and gym can be used after-hours and the general appearance of the school is adequate. The school does not have a community room.

**Security**

Score is unsatisfactory.



## Perkins&Will

### Educational Suitability Summary Report

Navarro Early College High School

---

---

#### Controllability of Systems

Score is unsatisfactory.

Thermostat control is lacking, and blinds are provided in windows but are in poor condition.

#### Academics & Learning

Score is unsatisfactory.

Studios are undersized at 750 square feet. Each studio cluster has a professional learning center or teacher workroom, but limited transparency makes them difficult to use. One of these spaces (out of eight) has been converted to a collaboration space (photo shown below). However, most of the school does not have collaboration space for small or large groups.

#### Media Resources

Score is unsatisfactory.

Location of library does not allow for public access after-hours. Furniture is bulky and not easily movable. The space is large and open and doesn't provide small group rooms for quiet study or group projects.

#### Technology

Score is unsatisfactory.

The main gym does not have A/V. Instructional technology is new. Charging locations are not adequate or consistent throughout school.

#### Administration Spaces

Score is unsatisfactory.

Administration space is close to front door and there is a checkpoint at the main door, but the two are not co-located. Admin space needs updates to furniture and finishes to feel more welcoming.

#### Average Categories (51-65%):

##### Environmental Quality

Score is average.

Acoustics in studios are average. A majority of the studios have access to daylight and exterior views. The school has a pest problem – raccoons have been an issue and mosquitoes become a huge nuisance if there is standing water in the courtyard.

##### Furniture, Fixtures, Equipment

Score is average.

Furniture condition is average. There are not different seating choices in the library, and the library furniture is cumbersome to move and reconfigure. Outdoor seating needs improvements.

##### Visual and Performing Arts

Score is average.

## Perkins&Will

### Educational Suitability Summary Report

Navarro Early College High School

Orchestra and choir currently share a choir room in the main building. It is set up with permanent risers, and as the orchestra grows, this space will not be suitable. Dance studio is in auxiliary gym and is satisfactory. The band hall is in average condition. The lack of storage is problematic. Large instruments are sitting on the ground and are too accessible and not secured. The uniform storage room does not allow a person to enter without moving a rack first. The theater and black box theater are in good condition with accessible dressing rooms and stage. The visual arts studio has some deficiencies. There is a lack of sinks and storage.

#### Athletics and Wellness

Score is average.

The campus does not meet the Ed Spec for physical education programs. Weight room (former stage) is undersized and in poor condition. The campus hosts UIL athletic events for varsity (volleyball and basketball) and some field sports for junior varsity and freshman teams. The storage and locker rooms are very unsatisfactory. The playing fields outside are in poor shape and are uneven. All finishes (walls and floors) need to be upgraded.

#### Satisfactory Categories (66-80%):

##### Exterior

Score is satisfactory.

Signage is excellent and newly updated with the school's name change. Site circulation is separate. Buses pick up at the back of campus off of Fairfield Drive.

##### Outdoor Learning and Activity

Score is satisfactory.

Outdoor studios are not present, and current studio configuration does not allow for opening up to the exterior. There are gardens and the greenhouse, but upgrades are needed to function well. A cistern was not observed.

##### Food Services

Score is satisfactory.

Cafeteria is generous in size and has multiple seating options. The seating is outdated. The cafeteria opens to the courtyard to provide additional outdoor seating. Kitchen and servery are in average condition.

#### Very Satisfactory Categories (81-100%):

##### CTE and Career Connected Learning

Score is very satisfactory.

The school provides coursework in almost every CTE program. The facilities work well for the programs. Some additional support spaces would help support the courses better.

**Perkins&Will**

**Educational Suitability Summary Report**  
Navarro Early College High School

**Supporting Photographs**



*Courtyard of the main building is a large space and could be utilized for outdoor learning with proper maintenance, irrigation and furniture and equipment upgrades. In the summer months, there is a mosquito problem due to drainage issues and standing water.*



*Variety of outdoor spaces for sitting, gathering and eating. Some of these spaces could be outfitted for collaborative/outdoor learning.*

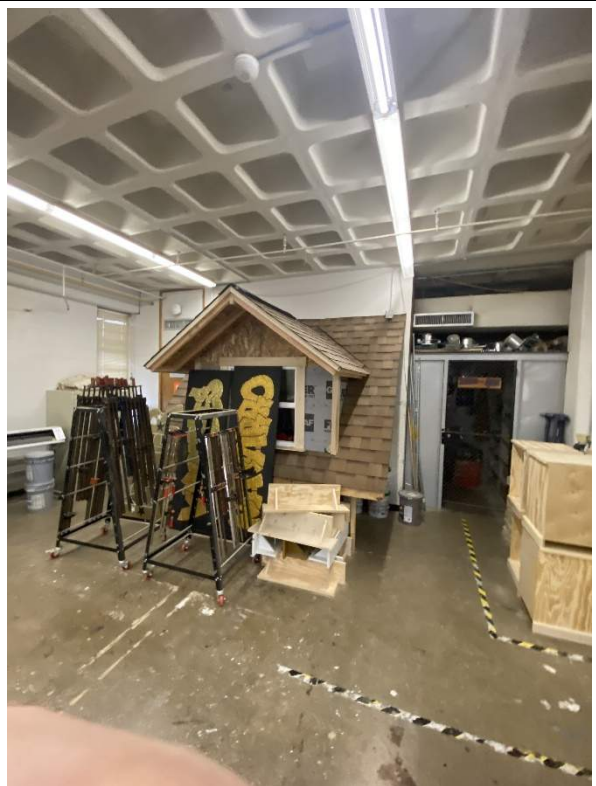
**Perkins&Will**

**Educational Suitability Summary Report**  
Navarro Early College High School

**Supporting Photographs**



*The cafeteria is large and provides multiple types of seating options. The seating is outdated.*



*Navarro offers a wide range of CTE programs and adequate support spaces for them, including construction technology.*

**Perkins&Will**

**Educational Suitability Summary Report**  
Navarro Early College High School

**Supporting Photographs**



*One of the studio clusters has an updated central support space for collaboration.*



*Performing arts auditorium is in good condition and functions well.*

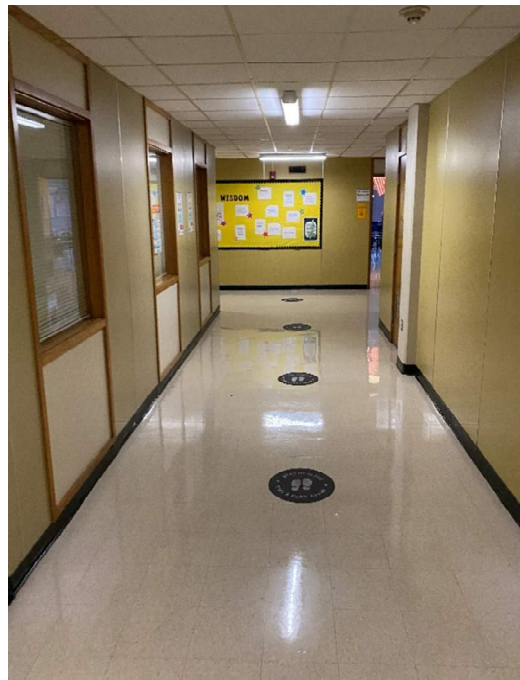
**Perkins&Will**

**Educational Suitability Summary Report**  
Navarro Early College High School

**Supporting Photographs**



*Band hall requires additional storage for instruments and uniforms.*



*Corridors within studio clusters are narrow and do not have visibility into studios or to courtyard space.*



*Orchestra and choir share a room in the main building. Currently set up as a choir room and as orchestra grows, the room setup is not conducive for orchestra.*



*Media Resources: Library is in good condition and is adequately sized. Furniture throughout is dated and heavy (though in decent condition). More power/data is needed as messy power strips and cords cause clutter.*



**Perkins&Will**

**Educational Suitability Summary Report**  
Navarro Early College High School

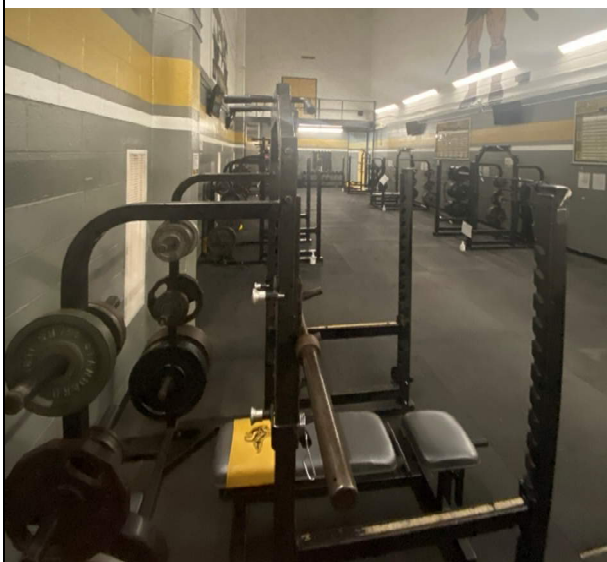
**Supporting Photographs**



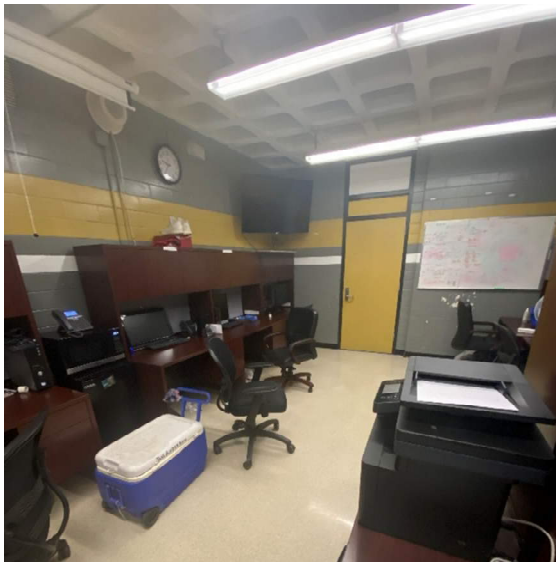
*Athletics lockers throughout are dated – products and their parts have been discontinued, so maintenance is nearly impossible.*



*Athletics surfaces are not in great shape for practices and competitions – unevenness, dips and holes have led to sprained ankles and torn ACLs.*



*Weight room is on former stage for main gym and only allows 30 athletes to use it at a time.*



*Coaches' office is cramped with 5-6 coaches sharing one office.*



## Austin ISD Educational Suitability Assessment Criteria

### General Building

**School Name**

**Navarro Early College High School**

**Walk Attendees:**

Lynn Petermann / Davis Richardson

**Date:**

12/14/2020

1 - Exterior		1	2	3	4	5	N/A	8.75	71%	
1.1	Does the site permit desirable separation of vehicular, bus and pedestrian traffic?			3				Comments	1.00	3.00
	1 Very unsatisfactory - Bus, car and pedestrian all happen at the same location							Buses pick up at the back side of the school.		
	2 Unsatisfactory - Cars and buses mix, pedestrians are separated									
	3 Average - Buses, cars, and pedestrians are separate but stack space is small									
	4 Satisfactory - Buses, cars, and pedestrians are separate but drop off does not have a canopy or a holding place like a commons or cafeteria									
	5 Very satisfactory - Buses, cars, and pedestrians are separate and drop off area has a canopy and destination									
	N/A Does not apply									
1.2	Is the building easily identified with appropriate signage and community wayfinding?					5		Comments	0.25	1.25
	1 Very unsatisfactory - Campus has no signage / wayfinding							Signage is excellent. Very clear and updated.		
	2 Unsatisfactory - Signage/wayfinding is faded/hidden									
	3 Average - Signage / wayfinding visible but not apparent									
	4 Satisfactory - Signage / wayfinding is visible but not good condition									
	5 Very satisfactory - Signage and wayfinding is visible and easy to use									
	N/A Does not apply									

1 - Exterior (cont.)		1	2	3	4	5	N/A				
1.3	Is the dumpster accessible for trash / compost disposal?				4				Comments	0.50	2.00
1	Very unsatisfactory - No compost present, route has obstacles (stairs, curbs, barriers) to dumpster										
2	Unsatisfactory - Compost is present. Route has obstacles to dumpster										
3	Average - Compost is present (<100' to cafeteria), Route to dumpster is free and clear but the two are not directly adjacent.										
4	Satisfactory - Compost and dumpster are directly adjacent and route is barrier free										
5	Very Satisfactory - Compost and dumpster are directly adjacent and route is barrier free. Dumpster are shaped / positioned so people of all heights can access it.										
N/A	Does not apply										
2 - Outdoor Learning and Activity		1	2	3	4	5	N/A			10.00	70%
2.1	Are outdoor studios and support spaces appropriately configured per the ed spec?		2						Comments	1.00	2.00
1	Very unsatisfactory - No dedicated outdoor studios								Campus has many potential locations for outdoor studios but upgrades to furniture, infrastructure are required.		
2	Unsatisfactory - Too small, poor condition, disconnected from learning spaces, no flexibility, no shade provided										
3	Average - Adequate size, adequate condition, needs some renovations or updates to function well, 50% or less shade coverage over studio area										
4	Satisfactory - Good size, good condition, connected to learning spaces, good flexibility, more than 50% shade coverage over studio area										
5	Very satisfactory - Generous size, excellent condition, connected to learning spaces, excellent flexibility, full shade coverage over studio area										
N/A	Does not apply										
2.2	Are active playgrounds (elementary only) and support spaces configured per the ed spec?						N/A		Comments	0.00	0.00
1	Very unsatisfactory - No dedicated active playground										
2	Unsatisfactory - Too small, poor condition, no shade provided										
3	Average - Adequate size, adequate condition, needs some renovations or updates to function well, 50% or less shade coverage over play structure										
4	Satisfactory - Good size, good condition, more than 50% shade coverage over play structure										
5	Very satisfactory - Generous size, excellent condition, full shade coverage over play structure										
N/A	Does not apply										

2 - Outdoor Learning and Activity (cont)		1	2	3	4	5	N/A			
2.3	Are gardens and support spaces appropriately configured per the ed spec? (evaluation on infrastructure not condition of plants)			3					Comments 0.00 <b>0.00</b>	
1	Very unsatisfactory - No dedicated gardens							Recording answer, does not affect score for Outdoor Learning and Activity.		
2	Unsatisfactory - Too small, poor condition, disconnected from learning spaces, no flexibility, no accessible water source									
3	Average - Adequate size, adequate condition, needs some renovations or updates to function well, water source is difficult to access									
4	Satisfactory - Good size, good condition, connected to learning spaces, good flexibility, water source is accessible with 100 ft hose									
5	Very Satisfactory - Generous size, excellent condition, connected to learning spaces, excellent flexibility, water source is less than 50ft from the garden or has irrigation									
N/A	Does not apply									
2.4	Are the rain gardens and/or cisterns appropriately configured per the ed spec?		2						Comments 0.00 <b>0.00</b>	
1	Very unsatisfactory - No rain gardens or cisterns							Recording answer, does not affect score for Outdoor Learning and Activity. No cistern or rain garden. Interior courtyards could provide this opportunity.		
2	Unsatisfactory - Too small, poor condition, not functioning, disconnected									
3	Average - Adequate size, adequate condition, is connected, needs some renovations or updates to function well									
4	Satisfactory - Good size, good condition, functions properly									
5	Very Satisfactory - Generous size, excellent condition, exceptional functionality, connected to learning spaces, educational signage provided									
N/A	Does not apply									
2.5	Does the school have animal husbandry? (optional)					5			Comments 0.00 <b>0.00</b>	
1	No									
5	Yes									
2.6	Does the school have nature loop trails? (optional)	1							Comments 0.00 <b>0.00</b>	
1	No									
5	Yes									
2.7	Does the school have a learning pond? (optional)	1							Comments 0.00 <b>0.00</b>	
1	No									
5	Yes									
2.8	Does the school have a grass play field and walking trail?					5			Comments 1.00 <b>5.00</b>	
1	No									
5	Yes									

3 - General Building		1	2	3	4	5	N/A	11.25	47%	
3.1	Are interior circulation routes wide enough to safely and effectively accommodate student movement?			3				Comments	0.50	1.50
1	Very unsatisfactory - Primary circulation is 5'-0" to 6'-0" wide							Interior circulation is tight.		
2	Unsatisfactory - Primary circulation is 6'-0" to 7'-0" wide									
3	Average - Primary circulation is 7'-0" to 8'-0" wide									
4	Satisfactory - Primary circulation is 8'-0"-10'-0" wide									
5	Very satisfactory - Primary circulation is 10'-0"+ wide									
N/A	Does not apply									
3.2	Are community use areas arranged so that the school can allow night functions without full school access?			3				Comments	0.75	2.25
1	Very unsatisfactory - Cafeteria, gym, and library cannot be accessed after hours							Cafeteria/gym/auditorium can be used after-hours.		
2	Unsatisfactory - Only one of the public spaces (Cafeteria, Gym and Library) can be accessed from parking and secured after hours									
3	Average - Only two of the public spaces can be accessed from parking and secured after hours									
4	Satisfactory - All of the public spaces can be accessed from parking and secured from the rest of the building but not individually									
5	Very satisfactory - Cafeteria, gym, and library can be accessed from parking and locked off from rest of campus for night/evening use with their own entrance									
N/A	Does not apply									
3.3	Is there a community room that is a dedicated meeting space outside of school function?	1						Comments	0.75	0.75
1	Very unsatisfactory - No dedicated community room									
2	Unsatisfactory - Community room but within school function, no access after school hours									
3	Average - Community room, moderate size, but need some renovations or updates to function well									
4	Satisfactory - Community room, good size /layout, meets needs /functions well									
5	Very Satisfactory - Community room, generous size, nice condition, functions appropriately outside of school function									
N/A	Does not apply									
3.4	Does the general appearance of the school convey pride for the students and community?			3				Comments	0.25	0.75
1	Very unsatisfactory - General appearance is poor									
2	Unsatisfactory - General appearance is aged but ok									
3	Average - General appearance is good									
4	Satisfactory - General appearance shows pride in campus and student works									
5	Very Unsatisfactory - General appearance shows pride in campus and student works and is welcoming to the community									
N/A	Does not apply									



<b>5 - Environmental Quality</b>		1	2	3	4	5	N/A	25.00	60%	
5.1	How are acoustics in studios in general?			3				Comments	1.00 3.00	
1	Very unsatisfactory - Recognized word/sound from adjacent studio/corridor									
2	Unsatisfactory - Audible sound from adjacent studio/corridor									
3	Average - Slight sound from outside room									
4	Satisfactory - Walls to deck insulated only white noise from mechanical system									
5	Very satisfactory - Able to hear quiet speaking from across the room									
N/A	Does not apply									
5.2	Is the studio artificial lighting adequate quality?			3				Comments	1.00 3.00	
1	Very unsatisfactory - Sporadic lights work, glare, less than 20 FC									
2	Unsatisfactory - 10-19 FC or serious glare									
3	Average- 20-29 FC minor glare									
4	Satisfactory - 30-39 FC and no glare									
5	Very satisfactory - 40+ FC and no glare									
N/A	Does not apply									
5.3	Is there access to natural light in studios?				4			Comments	1.00 4.00	
1	Very unsatisfactory - No learning spaces have natural light								Windows in studios in main building are small and do not let in a lot of light.	
2	Unsatisfactory - 1-25% of learning spaces have natural light or windows are too small to let in light									
3	Average - 26-50% of learning spaces have natural light									
4	Satisfactory - 51-75% of learning spaces have natural light									
5	Very satisfactory - 76-100% of learning spaces have natural light									
N/A	Does not apply									
5.4	Is there access to outside views from learning spaces?				4			Comments	1.00 4.00	
1	Very unsatisfactory - No learning spaces have views									
2	Unsatisfactory - 1-25% of learning spaces have views or windows are too small to see out									
3	Average - 26-50% of learning spaces have views									
4	Satisfactory - 51-75% of learning spaces have views									
5	Very satisfactory - 76-100% of learning spaces have views									
N/A	Does not apply									

<b>5 - Environmental Quality (cont.)</b>		1	2	3	4	5	N/A			
5.5	Does the building have odor or pest problems?	1						Comments	1.00	<b>1.00</b>
1	Very unsatisfactory - Evidence of both pests and odors							The school has raccoons, and mosquito issues are caused water that does not drain.		
2	Unsatisfactory - Evidence of pests or odors									
3	Average - Limited evidence of pests, no odors									
4	Satisfactory - No evidence of pests / odors, school cleanliness in good condition									
5	Very Satisfactory - No evidence, school cleanliness in excellent condition									
N/A	Does not apply									
<b>6 - Controllability of Systems</b>		1	2	3	4	5	N/A		12.50	<b>44%</b>
6.1	Does the studio thermostat allow for individual control?	1						Comments	0.50	<b>0.50</b>
1	No									
5	Yes									
6.2	Are shades provided to control natural light in learning spaces?			3				Comments	1.00	<b>3.00</b>
1	Very unsatisfactory - No, windows are covered with boards/paper									
2	Unsatisfactory - No, windows have no light control									
3	Average - Yes, but poor condition blinds									
4	Satisfactory - Yes, blinds									
5	Very satisfactory - Blackout shades									
N/A	Does not apply									
6.3	What is the quality of lighting controls in the studios?		2					Comments	1.00	<b>2.00</b>
1	Very unsatisfactory - Single switch only per room									
2	Unsatisfactory - Alternating rows switch off									
3	Average - Alternating lamps in single fixtures switch off									
4	Satisfactory - Tri level switching									
5	Very satisfactory - Dimmable									
N/A	Does not apply									



7 - Furniture, Fixtures & Equipment		1	2	3	4	5	N/A	18.75	64%
7.1	What is the current condition of the furniture?				4			Comments	0.75 3.00
1	Very unsatisfactory - Damaged or broken, non-functioning								
2	Unsatisfactory - Torn/ bent/ wrong size								
3	Average - Scratched/dented/marked								
4	Satisfactory - Not new, but sturdy and clean								
5	Very satisfactory - New								
N/A	Does not apply								
7.2	Are a variety of furniture types being accommodated throughout the school - learning commons, dining commons, other multi-use spaces?		2					Comments	1.00 2.00
1	Very Unsatisfactory - Same furniture used in all spaces	Lack of furniture variety. Library has limited types of seating.							
2	Unsatisfactory - Furniture variety in one multi-use space								
3	Average - Furniture variety in more than one multi-use space								
4	Satisfactory - All multi-use spaces have greater than one type of furniture								
5	Very satisfactory - All multi-use spaces have greater than two types of furniture								
N/A	Does not apply								
7.3	How well does furniture accommodate rapid reconfiguration of a space?			3				Comments	1.00 3.00
1	Very Unsatisfactory - Furniture is fixed or very heavy								
2	Unsatisfactory - Furniture does not allow desks to be configured as individuals, small groups, or large groups								
3	Average - Mix of furniture that can reconfigure but is cumbersome to move								
4	Satisfactory - Furniture is flexible for multiple configurations of space								
5	Very satisfactory - Furniture is flexible for multiple configurations of space, easy to move and stack								
N/A	Does not apply								
7.4	Is the furniture ergonomic and size appropriate for grade level?				4			Comments	1.00 4.00
1	Very unsatisfactory - Desk with attached chair combinations too small for grade level								
2	Unsatisfactory - Desk with attached chair combinations								
3	Average - Mix of studios with tables/loose chairs and desks with fixed seats								
4	Very satisfactory - Tables with loose chairs								
5	Very satisfactory - Tables with loose chairs that allow students to be active								
N/A	Does not apply								

Zero Waste		1	2	3	4	5	N/A	5.00	90%	
Do studios and corridors have blue recycle bins with bilingual instructions and/or image sorting instructions?					4			Comments	0.50 <b>2.00</b>	
1	Very unsatisfactory - There are no recycling and landfill bins and signage are sparse or infrequent, OR there are only landfill bins with no recycling bins.							A score for this category is being recorded, but this category is not calculated in the overall ESA average.		
2	Unsatisfactory - Bins and signage are sparse or infrequent and/or lack clear signage.									
3	Average - 50% of corridors and studios have both a landfill bin and a recycle bin in an accessible location. The containers have clear signage.									
4	Satisfactory - 75% of studios and corridors have a visible landfill and recycle collection containers in an accessible location. The containers have clear signage.									
5	Very satisfactory - All studios / corridors (100%) have visible landfill and recycle collection containers in accessible locations. The containers have clear signage, and the style and format is consistent and uniform across campus.									
N/A	Does not apply									
Does the cafeteria (or wherever meals are served) have at least one of each: green compost bin, blue recycle bin, and landfill bin? Are the bins labelled clearly with bilingual and/or image sorting?						5		Comments	0.50 <b>2.50</b>	
1	Very unsatisfactory- There may be landfill bins, but there are no compost and/or recycle bins. There is not clear sorting signage.							A score for this category is being recorded, but this category is not calculated in the overall ESA average.  All present with instructions.		
2	Unsatisfactory- Recycle, landfill, and compost bins are present, but the bins are scattered and no co-located next to one another. Signage is absent or inconsistent.									
3	Average- There is at least one waste station with all three bins (recycle, compost, landfill) located with close proximity to one another. The signage is visible and consistent.									
4	Satisfactory- There are several waste stations as described above									
5	Very Satisfactory - There are several waste stations as described above, and additional signage in the cafeteria that encourages recycling/composting.									
N/A	Does not apply									



**Perkins&Will**

**Austin ISD Educational Suitability Assessment Criteria**

**Academics - Middle School / High School**

**School Name**

**Navarro Early College High School**

**Walk Attendees:**

Lynn Petermann / Davis Richardson

**Date:**

12/14/2020

<b>8 - Academics &amp; Learning</b>		1	2	3	4	5	N/A	65.00	<b>42%</b>	
8.1	Are studios appropriately configured per the ed spec?		2					Comments	1.00 <b>2.00</b>	
1	Very unsatisfactory - Too small, no flexibility, disconnected							Undersized at 750 SF.		
2	Unsatisfactory - Too small, only one area for all teaching methods, limited flexibility, disconnected									
3	Neutral - Adequate size, multiple areas for different teaching methods, adequate flexibility, limited transparency and connection to other studios and shared learning spaces, needs updates or renovations to function well.									
4	Satisfactory - Good size, multiple areas for different teaching methods, good flexibility, good transparency and connection to other studios and shared learning spaces									
5	Very Satisfactory - Generous size, multiple areas for different teaching methods, excellent flexibility, generous display area and visual teaching tools, excellent transparency and connection with other studios and shared learning spaces									
N/A	Does not apply									
8.2	Do studios have appropriate support spaces such as storage per the ed spec?			3				Comments	1.00 <b>3.00</b>	
1	Very unsatisfactory - None provided							Each studio pod has a PLC and storage in the interior of the doughnut.		
2	Unsatisfactory - Too small, disconnected, poor condition									
3	Neutral - Adequate size, average condition, needs updates or renovations to function well									
4	Satisfactory - Good size, connected, good condition									
5	Very Satisfactory - Generous size, connected, excellent condition									
N/A	Does not apply									

8 - Academics & Learning (cont.)		1	2	3	4	5	N/A			
8.3	Do typical learning neighborhoods have small and medium (high school only) group rooms and open collaboration space?		2					Comments	1.00 <b>2.00</b>	
1	Very unsatisfactory - No breakout rooms or open collaboration spaces are provided							Only one of the studio pods has new partition and glass.		
2	Unsatisfactory - Too small or too few, poor condition, no flexibility, lacks visual connection to learning neighborhood, poor acoustic privacy									
3	Average - Adequate size, adequate condition, needs some renovations or updates to function well									
4	Satisfactory - Good size, good condition and flexibility, transparency and connection to learning neighborhood, acoustic privacy									
5	Very Satisfactory - Generous size, excellent condition and flexibility, transparency and connection to learning neighborhood, acoustic privacy									
N/A	Does not apply									
8.4	Are Science Labs and support spaces appropriately configured per the ed spec?			3				Comments	1.00 <b>3.00</b>	
1	Very unsatisfactory - No dedicated science room							Newer science rooms function well. Older ones in main building do not have proper support or prep.		
2	Unsatisfactory - Too small, poor condition, no connected support space									
3	Average - Adequate size, adequate condition, needs some renovations or updates to function well									
4	Satisfactory - Good size, good condition, connected support spaces									
5	Very Satisfactory - Generous size, excellent condition, connected support spaces									
N/A	Does not apply									
8.5	Are Maker Spaces and support spaces appropriately configured per the ed spec? (cross reference with CTE below)	1						Comments	1.00 <b>1.00</b>	
1	Very unsatisfactory - No dedicated maker spaces									
2	Unsatisfactory - Too small, poor condition, disconnected from learning spaces, no flexibility									
3	Average - Adequate size, adequate condition, needs some renovations or updates to function well									
4	Satisfactory - Good size, good condition, connected to learning spaces									
5	Very Satisfactory - Generous size, excellent condition, connected to learning spaces									
N/A	Does not apply									

8 - Academics & Learning (cont.)		1	2	3	4	5	N/A			
8.6	Is there a Professional Learning Center in the learning neighborhood?		2					Comments	1.00 <b>2.00</b>	
1	Very unsatisfactory - No dedicated space for Professional Learning Center							Each studio pod has a PLC and storage in the interior of the doughnut.		
2	Unsatisfactory - Too small, poor condition, disconnected									
3	Average - Adequate size, adequate condition, needs some renovations or updates to function well									
4	Satisfactory - Good size, good condition, connected									
5	Very Satisfactory - Generous size, excellent condition, connected									
8.7	Are there adequate places to display the evidence and artifacts of learning (both 2D and 3D)?		2					Comments	1.00 <b>2.00</b>	
1	Very unsatisfactory - No dedicated space							Evidence of learning - not well curated or just not updated.		
2	Unsatisfactory - Too small, non-dedicated, poor condition									
3	Average - Adequate size, adequate condition, needs updates or renovations to function well									
4	Satisfactory - Good size, good condition									
5	Very Satisfactory - Generous size, excellent condition									
N/A	Does not apply									
8.8	Does the building / learning neighborhood provide adequate opportunities for students/teachers to collaborate in varying group sizes?		2					Comments	1.00 <b>2.00</b>	
1	Very unsatisfactory - No space to support collaboration in various sizes.									
2	Unsatisfactory - Too small, inflexible, only one option, does not support a variety of group sizes									
3	Average - Adequate space for collaboration, needs updates or renovations to function well.									
4	Satisfactory - Good size, good condition, multiple options to support a variety of group sizes									
5	Very Satisfactory - Generous size, excellent condition, multiple options to support a variety of group sizes									
N/A	Does not apply									
8.9	Does the building provide opportunities for informal interaction?			3				Comments	1.00 <b>3.00</b>	
1	Very unsatisfactory - No space							Exterior circulation provides ample locations for informal interaction. Updates to furniture to function well.		
2	Unsatisfactory - Too small, poor condition, layout and furnishings do not support informal interaction well									
3	Average - Adequate size and condition, needs updates or renovations to function well.									
4	Satisfactory - Good size, good condition, layout and furnishings support informal interactions									
5	Very Satisfactory - Generous size, excellent condition, layout and furnishings support informal interactions									
N/A	Does not apply									

8 - Academics & Learning (cont.)		1	2	3	4	5	N/A			
8.10	Does the building provide adequate opportunities for students to work independently?	1						Comments	1.00 <b>1.00</b>	
1	Very unsatisfactory - No breakout rooms/small study spaces								No areas for independent work. Would be completed in studio.	
2	Unsatisfactory - Too small, poor condition, no acoustic privacy, only one space for independent work, disconnected from learning neighborhood									
3	Average - Adequate size and condition, needs updates or renovations to function well.									
4	Satisfactory - Good size and condition, acoustic privacy, variety of independent work space options, connected to learning neighborhood									
5	Very Satisfactory - Generous size, excellent condition, acoustic privacy, variety of independent work space options, connected to learning neighborhood									
N/A	Does not apply									
<b>Special Education</b>										
8.11	Are Special Education spaces appropriately configured per the ed spec?			3				Comments	1.00 <b>3.00</b>	
1	Very unsatisfactory - Too small, no flexibility, disconnected								Two classrooms in main building, one in portable. Only two have accessible restrooms.	
2	Unsatisfactory - Too small, only one area for all teaching methods, limited flexibility, disconnected									
3	Neutral - Adequate size, multiple areas for different teaching methods, adequate flexibility, limited transparency and connection to other studios and shared learning spaces, needs updates or renovations to function well.									
4	Satisfactory - Good size, multiple areas for different teaching methods, good flexibility, good transparency and connection to other studios and shared learning spaces									
5	Very Satisfactory - Generous size, multiple areas for different teaching methods, excellent flexibility, generous display area and visual teaching tools, excellent transparency and connection with other studios and shared learning spaces									
N/A	Does not apply									
8.12	Are Special Education support spaces, such as storage, space for washer/dryer, appropriately configured per the ed spec?		2					Comments	1.00 <b>2.00</b>	
1	Very unsatisfactory - None provided									
2	Unsatisfactory - Too small, disconnected, poor condition									
3	Neutral - Adequate size, average condition, needs updates or renovations to function well									
4	Satisfactory - Good size, connected, good condition									
5	Very Satisfactory - Generous size, connected, excellent condition									
N/A	Does not apply									

8 - Academics & Learning (cont.)		1	2	3	4	5	N/A			
8.13	Are Accessible restrooms and changing rooms readily available to the Special Education spaces?	1						Comments	1.00	1.00
	1 No 5 Yes									
<b>STEAM Center</b>										
8.14	Does the campus have space to support a "STEAM" center?			3				Comments	0.00	0.00
	1 Very unsatisfactory - No available space for STEAM center and inadequate studio / collaborative space 2 Unsatisfactory - Collaborative areas / studios for CTE/CCL are completely separate but adequate size 3 Neutral - Collaborative areas / studios for CTE/CCL are adjacent but function separately 4 Satisfactory - Collaborative areas / studios for CTE/CCL function and have space availability to create STEAM center 5 Very Satisfactory - Functioning STEAM center offers studios, labs, common collaborative areas to support multimedia distance and hands-on project based learning N/A Does not apply	Monitoring answer, but does not count toward overall score.								
<b>9 - CTE and Career Connected Learning</b>									16.25	100%
9.1	How close is your campus to a CTE cluster pathway that is aligned with your CTE programs (Middle School only)?						N/A	Comments	0.00	0.00
	1 Very unsatisfactory - No correlation to CTE cluster pathway, no CTE programs. 2 Unsatisfactory - School supports less than half of the CTE programs that are listed in the cluster pathway. 3 Average - School support half of CTE programs listed in the cluster pathway, but missing some. 4 Satisfactory - School support a majority of CTE programs listed in the CTE cluster pathway. 5 Very Satisfactory - School is aligned with CTE cluster pathway. N/A Does not apply									
9.2	Do campus facilities align with the CTE Ed Spec Requirements for the current pathways offered?: Architecture and Construction					5		Pathway	0.25	1.25
	1 No 5 Yes N/A Does not apply									
9.3	Arts, Audio and Video Technology and Communications					5		Pathway	0.25	1.25
9.4	Business, Management and Administration					5		Pathway	0.25	1.25
9.5	Education and Training					5		Pathway	0.25	1.25
9.6	Health Science					5		Pathway	0.25	1.25

9 - CTE and Career Connected Learning (cont.)		1	2	3	4	5	N/A				
9.7	Hospitality and Tourism					5		Courses offered, not pathway	0.25	<b>1.25</b>	
9.8	Human Services (high school only)					5		Pathway	0.25	<b>1.25</b>	
9.9	Information Technology					5		Pathway	0.25	<b>1.25</b>	
9.10	Agriculture, Food and Natural Resources					5		Pathway	0.25	<b>1.25</b>	
9.11	Science, Technology, Engineering, and Mathematics					5		Pathway	0.25	<b>1.25</b>	
9.12	Transportation, Distribution and Logistics					5		Course offered, not pathway	0.25	<b>1.25</b>	
9.13	Finance (high school only)						N/A	No courses offered	0.00	<b>0.00</b>	
9.14	Government and Public Administration / JROTC Military programs (high school only)						N/A	No courses offered	0.00	<b>0.00</b>	
9.15	Law, Public Safety, Corrections and Security (high school only)					5		Pathway	0.25	<b>1.25</b>	
9.16	Manufacturing (high school only)					5		Courses offered, not pathway	0.25	<b>1.25</b>	
9.17	Marketing, Sales and Services (high school only)						N/A	No courses offered	0.00	<b>0.00</b>	
<b>10 - Visual and Performing Arts</b>									<b>35.00</b>	<b>63%</b>	
10.1	Is there flexibility of space to also be used by CTE and Athletics?	1						Comments	0.00	<b>0.00</b>	
1 No 5 Yes								Monitoring answer, but doesn't affect overall score.			
10.2	Are band and support spaces (rehearsal and storage) appropriately configured per the ed spec?		2					Comments	1.00	<b>2.00</b>	
1 Very unsatisfactory - Too small, missing program spaces 2 Unsatisfactory - Too small, poor condition 3 Neutral - Adequate size, adequate condition, needs updates or renovations to function well. 4 Satisfactory - Good size, good condition 5 Very Satisfactory - Generous size, excellent condition N/A Does not apply								Band hall is in average condition. Not enough storage. Uniform storage is cramped and larger instruments (tubas) are sitting on the ground in the band hall.			
10.3	Are orchestra and support spaces appropriately configured per the ed spec?		2					Comments	1.00	<b>2.00</b>	
1 Very unsatisfactory - Too small, missing program spaces 2 Unsatisfactory - Too small, poor condition 3 Neutral - Adequate size, adequate condition, needs updates or renovations to function well. 4 Satisfactory - Good size, good condition 5 Very Satisfactory - Generous size, excellent condition N/A Does not apply								Orchestra and choir share space. Room is set up for choir with built-in risers. Instructor noted this is ok right now for orchestra but as program grows, orchestra will need a flat floor. Also have small piano room. Guitar program taught by choir teacher and no separate storage.			



10 - Visual and Performing Arts (cont.)		1	2	3	4	5	N/A		
10.4	Are choir and support spaces appropriately configured per the ed spec?		2					Comments	1.00 <b>2.00</b>
	1 Very unsatisfactory - Too small, missing program spaces 2 Unsatisfactory - Too small, poor condition 3 Neutral - Adequate size, adequate condition, needs updates or renovations to function well. 4 Satisfactory - Good size, good condition 5 Very Satisfactory - Generous size, excellent condition N/A Does not apply	See notes above.							
10.5	Are dance and support spaces appropriately configured per the ed spec?				4			Comments	1.00 <b>4.00</b>
	1 Very unsatisfactory - Too small, missing program spaces 2 Unsatisfactory - Too small, poor condition 3 Neutral - Adequate size, adequate condition, needs updates or renovations to function well. 4 Satisfactory - Good size, good condition 5 Very Satisfactory - Generous size, excellent condition N/A Does not apply	Dance studio is generous with mirrors and barres.							
10.6	Are theater and support spaces appropriately configured per the ed spec?				4			Comments	1.00 <b>4.00</b>
	1 Very unsatisfactory - Too small, missing program spaces 2 Unsatisfactory - Too small, poor condition 3 Neutral - Adequate size, adequate condition, needs updates or renovations to function well. 4 Satisfactory - Good size, good condition 5 Very Satisfactory - Generous size, excellent condition N/A Does not apply	Black box and main theater in good condition. Dressing rooms and stage.							
10.7	Are visual arts and support spaces appropriately configured per the ed spec?			3				Comments	1.00 <b>3.00</b>
	1 Very unsatisfactory - Too small, missing program spaces 2 Unsatisfactory - Too small, poor condition 3 Neutral - Adequate size, adequate condition, needs updates or renovations to function well. 4 Satisfactory - Good size, good condition 5 Very Satisfactory - Generous size, excellent condition N/A Does not apply	Art room in Room 22 is average. Lack of sinks and storage.							
10.8	Does the campus have adequate space for the specialty arts programs (Ensemble, Guitar, Music studies, Music theory and Piano)?					5		Comments	1.00 <b>5.00</b>
	1 No 5 Yes	Has piano and guitar but in too small space.							

<b>11 - Athletics and Wellness</b>						26.25	54%		
11.1	Does the campus meet ed spec standard for physical education program spaces?	1				Comments	1.00	1.00	
1	Very unsatisfactory - Too small, missing program spaces	No dedicated weight room. Not enough practice fields. Weight room needed for 100 students - currently can fit 30. Coaches' offices are very tight. Lockers don't fit pads for football. A/V nonexistent in main gym. Drill team and cheer use third gym. Conex for a lot of the storage at the fields. Play/practice fields not in good shape.							
2	Unsatisfactory - Too small, poor condition								
3	Average - Adequate size, adequate condition, needs some renovations or updates to function well								
4	Satisfactory - Good size, good condition								
5	Very Satisfactory - Generous size, excellent condition								
N/A	Does not apply								
11.2	Does the campus have a dedicated wellness center?	1				Comments	0.50	0.50	
1	No								
5	Yes								
11.3	Does the community have access to exterior playfields/courts?			5		Comments	0.50	2.50	
1	No	Track/field gets a lot of community use.							
5	Yes								
11.4	Are facilities available to facilitate eSports (High School only)?	1				Comments	0.00	0.00	
1	No	Monitoring answer, but doesn't affect overall score.							
5	Yes								
11.5	Are facilities set up to support UIL sanctioned athletics for basketball?			5		Comments	0.25	1.25	
1	No								
5	Yes								
11.6	Are facilities set up to support UIL sanctioned athletics for track?	1				Comments	0.25	0.25	
1	No	Supports practice but no spectator seating. Track is in unsatisfactory shape							
5	Yes								
11.7	Are facilities set up to support UIL sanctioned athletics for football?	1				Comments	0.25	0.25	
1	No	Support practice but field is not adequate for game.							
5	Yes								
11.8	Are facilities set up to support UIL sanctioned athletics for volleyball?			5		Comments	0.25	1.25	
1	No								
5	Yes								
11.9	Are facilities set up to support UIL sanctioned athletics for tennis?	1				Comments	0.25	0.25	
1	No	Courts support practice.							
5	Yes								
11.10	Are facilities set up to support UIL sanctioned athletics for soccer?			5		Comments	0.25	1.25	
1	No	Only JV/Freshman							
5	Yes								

11 - Athletics and Wellness (cont.)		1	2	3	4	5	N/A			
11.11	Are facilities (dedicated storage) set up to support UIL sanctioned athletics for cross-country (high school only)?	1						Comments	0.25	<b>0.25</b>
	1 No 5 Yes							Storage for cross-country, golf, girls' soccer all in one small room. Not dedicated.		
11.12	Are facilities (dedicated storage) set up to support UIL sanctioned athletics for golf (high school only)?	1						Comments	0.25	<b>0.25</b>
	1 No 5 Yes									
11.13	Are facilities (dedicated storage) set up to support UIL sanctioned athletics for swimming (high school only)?	1						Comments	0.25	<b>0.25</b>
	1 No 5 Yes									
11.14	Are facilities set up to support UIL sanctioned athletics for wrestling (high school only)?					5		Comments	0.25	<b>1.25</b>
	1 No 5 Yes									
11.15	Are facilities set up to support UIL sanctioned athletics for baseball (high school only)?					5		Comments	0.25	<b>1.25</b>
	1 No 5 Yes							Very small spectator area.		
11.16	Are facilities set up to support UIL sanctioned athletics for softball (high school only)?					5		Comments	0.25	<b>1.25</b>
	1 No 5 Yes									
11.17	Are facilities (dedicated space outside of the gymnasium) available to support competitive spirit activities for cheerleading and drill team?					5		Comments	0.25	<b>1.25</b>
	1 No 5 Yes							Dedicated space in auxiliary gym.		
11 - Athletics and Wellness (cont.)		1	2	3	4	5	N/A			
11.18	How do the athletics fields align with FMP Campus Improvements? Turf Field, Parking lot lighting, ADA accessible amenities (high School only)	1						Comments	0.00	<b>0.00</b>
	1 Very unsatisfactory - No turf, inaccessible, no site lighting 2 Unsatisfactory - No turf/field in poor condition, some accessibility concerns, poor site lighting 3 Average - Field in adequate condition, needs some updates or renovations to function well 4 Satisfactory - Turf field in good condition, good ADA access and site lighting 5 Very Satisfactory - Turf field with excellent maintenance, excellent ADA access for spectators and athletes, excellent site lighting N/A Does not apply.							Monitoring answer, but doesn't affect overall score. Grass field has many challenges. Baseball and practice fields do not have full irrigation and are not in good shape.		

12 - Food Services										10.00	70%	
12.1	Is the Dining Commons appropriately configured per the ed spec?				4					Comments	1.00	4.00
1	Very unsatisfactory - Too small, missing program spaces	Nice generous space with multiple types of seating. Connection to outdoor dining although not a lot of seating is outside.										
2	Unsatisfactory - Too small, poor condition, only one option for eating space provided, inadequate circulation											
3	Average - Adequate size and condition, needs updates or renovations to function well											
4	Satisfactory - Good size and condition, good circulation, multiple options for eating space (ex: connection to outdoor eating space)											
5	Very Satisfactory - Generous size, excellent condition and circulation, multiple options for eating space (ex: connection to outdoor eating space)											
N/A	Does not apply											
12.2	Are the Food Services support spaces appropriately configured per the ed spec?				3					Comments	1.00	3.00
1	Very unsatisfactory - None provided											
2	Unsatisfactory - Too small, disconnected, poor condition											
3	Neutral - Adequate size, average condition, needs updates or renovations to function well											
4	Satisfactory - Good size, connected, good condition											
5	Very Satisfactory - Generous size, connected, excellent condition											
N/A	Does not apply											
13 - Media Resources										30.00	50%	
13.1	Is the Library/Media Center easily accessible for the occupants and visitors to the school?		2							Comments	1.00	2.00
1	Very unsatisfactory - Not accessible	No public access. Library is easy to find off of main courtyard.										
2	Unsatisfactory - Limited access, difficult to find, no transparency											
3	Average - Adequate accessibility, needs updates or renovations to function well											
4	Satisfactory - Accessible, easy to find, good transparency, good condition											
5	Very Satisfactory - Accessible, easy to find, excellent transparency, excellent condition											
N/A	Does not apply											

13 - Media Resources - Continued		1	2	3	4	5	N/A			
13.2	How well does the Library/Media Center support quiet study?		2					Comments	1.00 <b>2.00</b>	
1	Very unsatisfactory - No quiet study spaces							One open space. Has computers and study tables.		
2	Unsatisfactory - One area in poor condition, poor acoustic privacy									
3	Average - One or more areas provided, needing updates or renovations to function well									
4	Satisfactory - Clusters or small rooms adjacent to media center, good condition, good acoustic privacy									
5	Very Satisfactory - Multiple clusters or small rooms adjacent to media center, excellent condition, excellent acoustic privacy									
N/A	Does not apply									
13.3	How well does the Library/Media Center support social interaction?			3				Comments	1.00 <b>3.00</b>	
1	Very unsatisfactory - No space									
2	Unsatisfactory - Too small, poor condition, layout and furnishings do not support informal interaction well									
3	Average - Adequate size and condition, needs updates or renovations to function well.									
4	Satisfactory - Good size, good condition, layout and furnishings support informal interactions									
5	Very Satisfactory - Generous size, excellent condition, layout and furnishings support informal interactions									
N/A	Does not apply									
13.4	How well does the Library/Media Center support collaborative work in small groups (4-8 students)?		2					Comments	1.00 <b>2.00</b>	
1	Very unsatisfactory - No breakout rooms, no flexible furniture, no support							Furniture is clunky and not easily reconfigurable for varying group sizes.		
2	Unsatisfactory - Too small, one area, poor condition									
3	Average - Adequate size, multiple areas provided, needing updates or renovations to function well									
4	Satisfactory - Clusters or small rooms adjacent to media center, flexible furniture, good condition									
5	Very Satisfactory - Multiple clusters or small rooms adjacent to media center, flexible furniture, excellent condition									
N/A	Does not apply									
13.5	How well does the Library/Media Center support collaborative work in larger groups (10-25)?			3				Comments	1.00 <b>3.00</b>	
1	Very unsatisfactory - No gathering areas							Can accommodate larger group but furniture is difficult to move.		
2	Unsatisfactory - Too small, one common space, limited seating, poor condition									
3	Average - Adequate size, one common space, needs updates or renovations to function well									
4	Satisfactory - Good size, multiple common spaces with seating, good condition									
5	Very Satisfactory - Generous size, multiple commons spaces with seating, excellent condition									
N/A	Does not apply									

<b>13 - Media Resources - Continued</b>		1	2	3	4	5	N/A			
13.6	How well does the Library/Media Center support technology?			3				Comments	1.00 <b>3.00</b>	
1	Very unsatisfactory - No vis comm tools							Projector and movable screen		
2	Unsatisfactory - Outdated, poorly functioning, or insufficient									
3	Average - Mix of old and new whiteboards/projectors/etc.									
4	Satisfactory - projectors, marker boards, smart boards in most spaces - good condition									
5	Very Satisfactory - projectors, marker boards, smart boards in most spaces - new condition									
N/A	Does not apply									
<b>14 - Technology</b>		1	2	3	4	5	N/A		20.00 <b>50%</b>	
14.1	How well equipped are the facilities with instructional technology?				4			Comments	1.00 <b>4.00</b>	
1	Very unsatisfactory - Limited to no technology present in instructional spaces									
2	Unsatisfactory - One type of technology present									
3	Average - Multiple types of technology, smart boards. Poor condition. Limited to only certain areas of school.									
4	Satisfactory - Multiple types of technology, smart boards. Good condition.									
5	Very Satisfactory - Multiple types of technology, smart boards. Excellent condition									
N/A	Does not apply									
14.2	Is there an adequate number of power and data outlets in learning spaces?			3				Comments	1.00 <b>3.00</b>	
1	Very unsatisfactory - Outlet configuration does not support digital devices throughout school (1 per wall)									
2	Unsatisfactory - Outlet configuration support digital devices only in certain areas of school (2 per wall)									
3	Average - Outlet configuration support digital devices but limited capacity throughout school (3 per wall)									
4	Satisfactory - Outlet configuration support digital devices with adequate coverage and capacity in limited locations (>3 per wall)									
5	Very Satisfactory - Excellent outlet configuration to support digital devices throughout school (>3 per wall)									
N/A	Does not apply									

14 - Technology (cont.)		1	2	3	4	5	N/A			
14.3	Are there adequate charging locations for devices?		2					Comments	1.00 2.00	
1	Very unsatisfactory - Not enough charging locations throughout school for 1:1									
2	Unsatisfactory - Charging locations, haphazard locations, and inadequate in size for number of devices									
3	Average - Charging locations well organized but not enough capacity for 1:1									
4	Satisfactory - Charging locations, haphazard locations, but supports 1:1.									
5	Very Satisfactory - Charging locations throughout school to support 1:1.									
N/A	Does not apply									
14.4	Is there adequate AV for presentations spaces – cafeteria, gym, aux gym?	1						Comments	1.00 1.00	
1	Very unsatisfactory - AV not present in one or more space									
2	Unsatisfactory - AV undersized for room. Poor condition									
3	Average - AV adequately sized / poor condition OR AV undersized / average condition									
4	Satisfactory - AV adequately sized for room. Average Condition.									
5	Very Satisfactory - AV adequately sized for room. Excellent condition.									
N/A	Does not apply									
14.5	Is there digital media signage at the reception area?	1						Comments	0.00 0.00	
1	Very unsatisfactory - No digital media present in reception area									
2	Unsatisfactory - Undersized, poor condition									
3	Average - Adequately sized / poor condition OR undersized / adequate condition									
4	Satisfactory - Media signage present, good sized, good condition									
5	Very Satisfactory - Generously sized, excellent condition									
N/A	Does not apply									

