

Educational Suitability Summary Report

Dobie Middle School

Date: 1/13/2021

Score 60% Average

Dobie Middle School serves an enrollment of approximately 650 students in northeast Austin. The approximately 133,000-square-foot school was built in 1973 and sits on 20 acres. The school provides engineering, culinary and fine arts programs.

The entrance of the building is not distinct and can be confusing to access the main entrance from the visitor parking. The circulation space within the building is generously sized, but the studios are undersized and are not suitable for flexible configurations. Some studios are in the center of the building, which does not allow any natural light or views to the exterior.

The school has performing arts auditorium that is in good condition. The library is on the second floor, which limits public access to the space. The cafeteria and gym can be securely accessed for after-hours use but lack adequate technological resources and flexible furniture. There are few outdoor learning spaces.

Interview Overview

A meeting was held with Principal Jesse De La Huerta, teachers and administrative staff. They expressed that they need to keep the portables, which support after-school programs and other programs such as a food pantry. The portables allow them to keep these services separate from the school building. Other items of significant importance to maintain are the murals on the wall by the library.

The staff mentioned that dance and orchestra are not in suitable spaces. The band hall needs additional storage and practice space. The dance program takes place in typical studio and the sound travels from one space to another. Life skills studios need more resources to function well, including improvements to the kitchen.

Accessibility has been an issue due to having only one elevator. When that elevator malfunctions, it limits some students' ability to move freely throughout the school. It also presents issues for staff, who have to transport equipment or furniture via the stairs. In some instances, it has taken months for the elevator to be repaired.

They would like to enclose the open-air walkway to the sixth-grade annex building and create a corridor for added security between the main building and annex. Visitor parking in the front of the building is inadequate. [REDACTED]

They feel they would benefit from more studios in general to accommodate increasing enrollment. The campus needs more space for teachers, especially special education teachers.

Outdoor spaces can get hot, and they need more shade to be able to use these outdoor spaces more effectively. They added that a covered basketball court would be nice to have. Overall, the Wi-Fi is inconsistent, and they need more power connections throughout the campus. Collaboration or breakout spaces are needed. They would like to have the ability to build on CTE programs that can feed into high school. There is a goal of having elementary schools with programs that can feed into this campus and on into the high school level.

Assessment Findings

The Educational Suitability Assessment of Dobie Middle School earned a 60% overall score and places the campus in a category of Average. The assessment consists of seven General Building categories and eight Academic categories to determine areas that need more attention.

Unsatisfactory Categories (36-50%):

Security

Score is very unsatisfactory.



Technology

Score is very unsatisfactory.

Technology is inadequate throughout the school. There is a mix of old and new technology in the cafeteria and gym. The studios need more power outlets. Projector screens are old in some spaces and most spaces rely on TV carts.

Average Categories (51-65%):

General Building

Score is average.

The building shows its age in some areas, but it is well maintained overall. HVAC is old and noise creates a distraction in the gym and some studio spaces. Gym and cafeteria can be utilized after-hours for secured access. Elevator is small, outdated and unreliable.

Environmental Quality

Score is average.

Most studios lack natural light and views to the outside. Some studios in the center of the building have no windows, and there is no borrowed light from the corridors. Artificial light is adequate in all studios. Most doors have louver system at the bottom, which creates poor acoustics between the corridor and adjacent studios.

Controllability of Systems

Score is average.

Artificial lighting controls are limited to only one way for on/off. Blinds for windows are in poor

condition.

Academics & Learning

Score is average.

Studios are undersized overall and lack flexibility. Storage spaces are inconsistent. Some studios have only a small cabinet in a portion of the wall. Some studio spaces are not suitable for the programs they are currently used for and need renovation and updates.

CTE and Career Connected Learning

Score is average.

School supports half of CTE programs listed in the cluster pathway.

Visual and Performing Arts

Score is average.

Dance space is repurposed in a typical studio that is unsuitable for its needs. Dance and choir spaces are on the second floor and are disconnected from the auditorium and performance stage. Art rooms are in a separate annex building that is disconnected from the main building,

Food Services

Score is average.

Cafeteria is adequately sized but needs updates. There is no variety of flexible furniture to allow for small and large groups. Cafeteria stage does not have accessible ramp or chair lift.

Media Resources

Score is average.

The library is on the second floor, which limits use of the space for the community. The library has limited technology and lacks flexible collaboration spaces for students. There are no quiet study rooms in the library space.

Administration Spaces

Score is average.



Satisfactory Categories (66-80%):

Exterior

Score is satisfactory.

Vehicular, bus and pedestrian traffic are in different locations, but canopy coverage is not adequate for bus pickup and drop-off. The building lacks clear wayfinding and signage. All dumpsters (recycling, trash, and composting) are available, and the path is barrier free.

Outdoor Learning and Activity

Score is satisfactory.

Outdoor learning spaces are provided but need updated outdoor furniture and additional shade. The playfields are not in good condition and need updates.

Athletics and Wellness

Score is satisfactory.

Gym space is a good size and in good condition, although HVAC noise in the main gym is very loud and distracting. Storage is adequate, but there are no projectors and whiteboards in the gym. The track is not a quarter mile in length, and fields and tennis courts need improvements in order to host UIL athletics. Per the school, the field is in the middle of the water run off and loses its top soil after rain storms, making the field not usable.

Very Satisfactory Categories (81-100%):**Furniture, Fixtures, Equipment**

Score is very satisfactory.

New furniture has been recently added and is in great condition throughout the school. It allows for easy reconfiguration for different learning groups in some spaces. The cafeteria is one space that still has only one type of seating available and is not very flexible.

Supporting Photographs



No designated maker space, but the provided space is used for various purposes and programs and doubles as a maker space.



Only one type of furniture is available in the cafeteria, which is bulky and hard to reconfigure. Stage storage is inadequate, and stage is only accessible by stairs.

Supporting Photographs



Furniture in the hallways provides a few breakout spaces. Display cases are adequate.

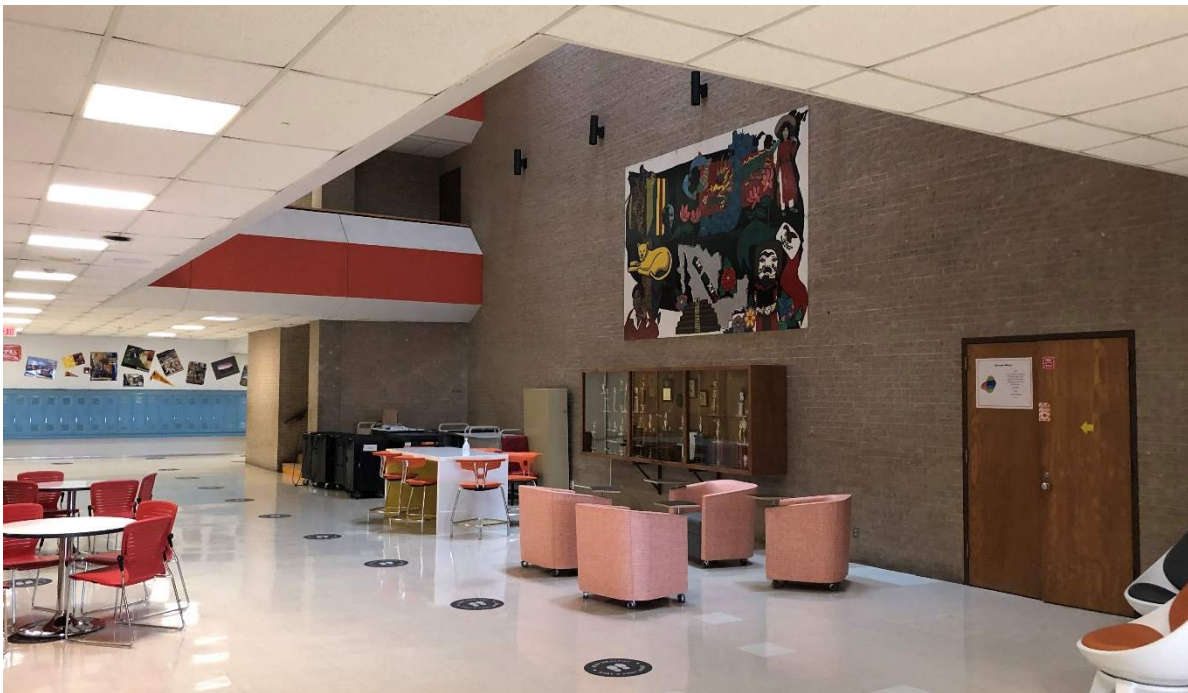


Gym is adequately sized and in good condition; it has good storage and updated flooring.

Supporting Photographs



Weight room is adequate size and in good condition.



Breakout spaces with flexible furniture in the hallways allow informal interaction between the students.

Supporting Photographs



Performance Stage: Overall in good condition but lacks adequate storage in the back of the stage.



Culinary Arts Room: Space needs a larger room for kitchen equipment and resources.

Supporting Photographs



[redacted] and the louvers cause sound to travel from studios into the corridors.



Inadequate natural light and light control system in typical studio. There is a mix of new and old technology, and projector needs updates. Flexible furniture is provided.

Supporting Photographs

Library is on the second floor, which limits access. Flexible furniture allows for different group sizes to meet and depending on layout quiet study may be difficult to achieve. There is a room in the back of the library that can potentially be used for group collaboration.



This is the only outdoor space for the school. No teaching resources are provided, and furniture needs updates.



Austin ISD Educational Suitability Assessment Criteria

General Building

School Name

Dobie Middle School

Walk Attendees:

Anacleto Rojas and Vishwesh Panchal

Date:

1/13/2021

1 - Exterior		1	2	3	4	5	N/A	8.75	77%	
1.1	Does the site permit desirable separation of vehicular, bus and pedestrian traffic?				4			Comments	1.00	4.00
	1 Very unsatisfactory - Bus, car and pedestrian all happen at the same location							Bus and vehicular traffic happen in different locations, however there is not a canopy to accommodate multiple buses.		
	2 Unsatisfactory - Cars and buses mix, pedestrians are separated									
	3 Average - Buses, cars, and pedestrians are separate but stack space is small									
	4 Satisfactory - Buses, cars, and pedestrians are separate but drop off does not have a canopy or a holding place like a commons or cafeteria									
	5 Very satisfactory - Buses, cars, and pedestrians are separate and drop off area has a canopy and destination									
	N/A Does not apply									
1.2	Is the building easily identified with appropriate signage and community wayfinding?			3				Comments	0.25	0.75
	1 Very unsatisfactory - Campus has no signage / wayfinding							Signage for wayfinding is small throughout the campus and not apparent.		
	2 Unsatisfactory - Signage/wayfinding is faded/hidden									
	3 Average - Signage / wayfinding visible but not apparent									
	4 Satisfactory - Signage / wayfinding is visible but not good condition									
	5 Very satisfactory - Signage and wayfinding is visible and easy to use									
	N/A Does not apply									

1 - Exterior (cont.)		1	2	3	4	5	N/A			
1.3	Is the dumpster accessible for trash / compost disposal?				4			Comments	0.50 2.00	
1	Very unsatisfactory - No compost present, route has obstacles (stairs, curbs, barriers) to dumpster							Dumpster bins are adjacent to cafeteria and are accessible with a barrier free route.		
2	Unsatisfactory - Compost is present. Route has obstacles to dumpster									
3	Average - Compost is present (<100' to cafeteria), Route to dumpster is free and clear but the two are not directly adjacent.									
4	Satisfactory - Compost and dumpster are directly adjacent and route is barrier free									
5	Very Satisfactory - Compost and dumpster are directly adjacent and route is barrier free. Dumpster are shaped / positioned so people of all heights can access it.									
N/A	Does not apply									
2 - Outdoor Learning and Activities		1	2	3	4	5	N/A	10.00 70%		
2.1	Are outdoor studios and support spaces appropriately configured per the ed spec?		2					Comments	1.00 2.00	
1	Very unsatisfactory - No dedicated outdoor studios							Only one small dedicated outdoor learning space near the 6th grade building with a wood trellis structure and two picnic tables. Needs further development to function well.		
2	Unsatisfactory - Too small, poor condition, disconnected from learning spaces, no flexibility, no shade provided									
3	Average - Adequate size, adequate condition, needs some renovations or updates to function well, 50% or less shade coverage over studio area									
4	Satisfactory - Good size, good condition, connected to learning spaces, good flexibility, more than 50% shade coverage over studio area									
5	Very satisfactory - Generous size, excellent condition, connected to learning spaces, excellent flexibility, full shade coverage over studio area									
N/A	Does not apply									
2.2	Are active playgrounds (elementary only) and support spaces configured per the ed spec?						N/A	Comments	0.00 0.00	
1	Very unsatisfactory - No dedicated active playground									
2	Unsatisfactory - Too small, poor condition, no shade provided									
3	Average - Adequate size, adequate condition, needs some renovations or updates to function well, 50% or less shade coverage over play structure									
4	Satisfactory - Good size, good condition, more than 50% shade coverage over play structure									
5	Very satisfactory - Generous size, excellent condition, full shade coverage over play structure									
N/A	Does not apply									

2 - Outdoor Learning and Activities (cont)		1	2	3	4	5	N/A	Comments		0.00	0.00
2.3	Are gardens and support spaces appropriately configured per the ed spec? (evaluation on infrastructure not condition of plants)		2					Comments		0.00	0.00
1	Very unsatisfactory - No dedicated gardens							Monitoring answer, but does not affect overall score for Outdoor Learning & Activity.			
2	Unsatisfactory - Too small, poor condition, disconnected from learning spaces, no flexibility, no accessible water source										
3	Average - Adequate size, adequate condition, needs some renovations or updates to function well, water source is difficult to access										
4	Satisfactory - Good size, good condition, connected to learning spaces, good flexibility, water source is accessible with 100 ft hose										
5	Very Satisfactory - Generous size, excellent condition, connected to learning spaces, excellent flexibility, water source is less than 50ft from the garden or has irrigation										
N/A	Does not apply										
2.4	Are the rain gardens and/or cisterns appropriately configured per the ed spec?	1						Comments		0.00	0.00
1	Very unsatisfactory - No rain gardens or cisterns							Monitoring answer, but does not affect overall score for Outdoor Learning & Activity.			
2	Unsatisfactory - Too small, poor condition, not functioning, disconnected										
3	Average - Adequate size, adequate condition, is connected, needs some renovations or updates to function well										
4	Satisfactory - Good size, good condition, functions properly										
5	Very Satisfactory - Generous size, excellent condition, exceptional functionality, connected to learning spaces, educational signage provided										
N/A	Does not apply										
2.5	Does the school have animal husbandry? (optional)	1						Comments		0.00	0.00
1	No										
5	Yes										
2.6	Does the school have nature loop trails? (optional)	1						Comments		0.00	0.00
1	No										
5	Yes										
2.7	Does the school have a learning pond? (optional)	1						Comments		0.00	0.00
1	No										
5	Yes										
2.8	Does the school have a grass play field and walking trail?					5		Comments		1.00	5.00
1	No										
5	Yes										

3 - General Building		1	2	3	4	5	N/A	11.25	64%	
3.1	Are interior circulation routes wide enough to safely and effectively accommodate student movement?					5		Comments	0.50	2.50
1	Very unsatisfactory - Primary circulation is 5'-0" to 6'-0" wide	Main corridors are greater than 10'-0" in width with ample room for circulation.								
2	Unsatisfactory - Primary circulation is 6'-0" to 7'-0" wide									
3	Average - Primary circulation is 7'-0" to 8'-0" wide									
4	Satisfactory - Primary circulation is 8'-0"-10'-0" wide									
5	Very satisfactory - Primary circulation is 10'-0"+ wide									
N/A	Does not apply									
3.2	Are community use areas arranged so that the school can allow night functions without full school access?				4			Comments	0.75	3.00
1	Very unsatisfactory - Cafeteria, gym, and library cannot be accessed after hours	Cafeteria and gym are well located with direct connection to exterior and parking to function afterhours								
2	Unsatisfactory - Only one of the public spaces (Cafeteria, Gym and Library) can be accessed from parking and secured after hours									
3	Average - Only two of the public spaces can be accessed from parking and secured after hours									
4	Satisfactory - All of the public spaces can be accessed from parking and secured from the rest of the building but not individually									
5	Very satisfactory - Cafeteria, gym, and library can be accessed from parking and locked off from rest of campus for night/evening use with their own entrance									
N/A	Does not apply									
3.3	Is there a community room that is a dedicated meeting space outside of school function?	1						Comments	0.75	0.75
1	Very unsatisfactory - No dedicated community room	Campus does not have a dedicated community room outside of school function.								
2	Unsatisfactory - Community room but within school function, no access after school hours									
3	Average - Community room, moderate size, but need some renovations or updates to function well									
4	Satisfactory - Community room, good size /layout, meets needs /functions well									
5	Very Satisfactory - Community room, generous size, nice condition, functions appropriately outside of school function									
N/A	Does not apply									
3.4	Does the general appearance of the school convey pride for the students and community?				4			Comments	0.25	1.00
1	Very unsatisfactory - General appearance is poor	Overall, campus displays pride for students and community with display of murals and student work.								
2	Unsatisfactory - General appearance is aged but ok									
3	Average - General appearance is good									
4	Satisfactory - General appearance shows pride in campus and student works									
5	Very satisfactory - General appearance shows pride in campus and student works and is welcoming to the community									
N/A	Does not apply									

5 - Environmental Quality		1	2	3	4	5	N/A	25.00	56%
5.1	How are acoustics in studios in general?			3				Comments	1.00 3.00
1	Very unsatisfactory - Recognized word/sound from adjacent studio/corridor							Louvers in doors provide some sound transmission from the corridor into the studios.	
2	Unsatisfactory - Audible sound from adjacent studio/corridor								
3	Average - Slight sound from outside room								
4	Satisfactory - Walls to deck insulated only white noise from mechanical system								
5	Very satisfactory - Able to hear quiet speaking from across the room								
N/A	Does not apply								
5.2	Is the studio artificial lighting adequate quality?			3				Comments	1.00 3.00
1	Very unsatisfactory - Sporadic lights work, glare, less than 20 FC							Lighting in studios provides some minor glare.	
2	Unsatisfactory - 10-19 FC or serious glare								
3	Average- 20-29 FC minor glare								
4	Satisfactory - 30-39 FC and no glare								
5	Very satisfactory - 40+ FC and no glare								
N/A	Does not apply								
5.3	Is there access to natural light in studios?		2					Comments	1.00 2.00
1	Very unsatisfactory - No learning spaces have natural light							Most studios in main building have small windows. Some interior learning spaces do not have any access to natural light.	
2	Unsatisfactory - 1-25% of learning spaces have natural light or windows are too small to let in light								
3	Average - 26-50% of learning spaces have natural light								
4	Satisfactory - 51-75% of learning spaces have natural light								
5	Very satisfactory - 76-100% of learning spaces have natural light								
N/A	Does not apply								
5.4	Is there access to outside views from learning spaces?		2					Comments	1.00 2.00
1	Very unsatisfactory - No learning spaces have views							Only some spaces on the second floor get a window and outside views.	
2	Unsatisfactory - 1-25% of learning spaces have views or windows are too small to see out								
3	Average - 26-50% of learning spaces have views								
4	Satisfactory - 51-75% of learning spaces have views								
5	Very satisfactory - 76-100% of learning spaces have views								
N/A	Does not apply								

5 - Environmental Quality (cont.)		1	2	3	4	5	N/A			
5.5	Does the building have odor or pest problems?				4			Comments	1.00	4.00
1	Very unsatisfactory - Evidence of both pests and odors							No particular pest evidence or odors. The school shows age in some areas. Plumbing and HVAC vents has some odor.		
2	Unsatisfactory - Evidence of pests or odors									
3	Average - Limited evidence of pests, no odors									
4	Satisfactory - No evidence of pests / odors, school cleanliness in good condition									
5	Very Satisfactory - No evidence, school cleanliness in excellent condition									
N/A	Does not apply									
6 - Controllability of Systems		1	2	3	4	5	N/A	12.50	52%	
6.1	Does the studio thermostat allow for individual control?					5		Comments	0.50	2.50
1	No									
5	Yes									
6.2	Are shades provided to control natural light in learning spaces?			3				Comments	1.00	3.00
1	Very unsatisfactory - No, windows are covered with boards/paper							Blinds are in studios, but in need of replacement.		
2	Unsatisfactory - No, windows have no light control									
3	Average - Yes, but poor condition blinds									
4	Satisfactory - Yes, blinds									
5	Very satisfactory - Blackout shades									
N/A	Does not apply									
6.3	What is the quality of lighting controls in the studios?	1						Comments	1.00	1.00
1	Very unsatisfactory - Single switch only per room							Studios have a single switch for lighting control.		
2	Unsatisfactory - Alternating rows switch off									
3	Average - Alternating lamps in single fixtures switch off									
4	Satisfactory - Tri level switching									
5	Very satisfactory - Dimmable									
N/A	Does not apply									

7 - Furniture, Fixtures & Equipment		1	2	3	4	5	N/A	18.75	89%	
7.1	What is the current condition of the furniture?					5		0.75	3.75	
1	Very unsatisfactory - Damaged or broken, non-functioning	New furniture provided throughout the school recently received. Most of the furniture stored in auxiliary gym and library.								
2	Unsatisfactory - Torn/ bent/ wrong size									
3	Average - Scratched/dented/marked									
4	Satisfactory - Not new, but sturdy and clean									
5	Very satisfactory - New									
N/A	Does not apply									
7.2	Are a variety of furniture types being accommodated throughout the school - learning commons, dining commons, other multi-use spaces?				4			1.00	4.00	
1	Very Unsatisfactory - Same furniture used in all spaces	Observed that where furniture was placed, more than one type of new furniture placed in multi-use spaces. Most of the new furniture being stored.								
2	Unsatisfactory - Furniture variety in one multi-use space									
3	Average - Furniture variety in more than one multi-use space									
4	Satisfactory - All multi-use spaces have greater than one type of furniture									
5	Very satisfactory - All multi-use spaces have greater than two types of furniture									
N/A	Does not apply									
7.3	How well does furniture accommodate rapid reconfiguration of a space?				4			1.00	4.00	
1	Very Unsatisfactory - Furniture is fixed or very heavy	Furniture in place is new and is flexible for multiple configuration. Chairs are limited in ability to stack.								
2	Unsatisfactory - Furniture does not allow desks to be configured as individuals, small groups, or large groups									
3	Average - Mix of furniture that can reconfigure but is cumbersome to move									
4	Satisfactory - Furniture is flexible for multiple configurations of space									
5	Very satisfactory - Furniture is flexible for multiple configurations of space, easy to move and stack									
N/A	Does not apply									
7.4	Is the furniture ergonomic and size appropriate for grade level?					5		1.00	5.00	
1	Very unsatisfactory - Desk with attached chair combinations too small for grade level	All studios with new furniture with loose tables and chairs on wheels. Some studios have tables on wheels.								
2	Unsatisfactory - Desk with attached chair combinations									
3	Average - Mix of studios with tables/loose chairs and desks with fixed seats									
4	Very satisfactory - Tables with loose chairs									
5	Very satisfactory - Tables with loose chairs that allow students to be active									
N/A	Does not apply									

Zero Waste		1	2	3	4	5	N/A	5.00	40%	
Do studios and corridors have blue recycle bins with bilingual instructions and/or image sorting instructions?		1						Comments	0.50 0.50	
1	Very unsatisfactory - There are no recycling and landfill bins and signage are sparse or infrequent. OR there are only landfill bins with no recycling bins.							<p>A score for this category is being recorded, but this category is not calculated in the overall ESA average.</p> <p>Observed only landfill bins typically in studios.</p>		
2	Unsatisfactory - Bins and signage are sparse or infrequent and/or lack clear signage.									
3	Average - 50% of corridors and studios have both a landfill bin and a recycle bin in an accessible location. The containers have clear signage.									
4	Satisfactory - 75% of studios and corridors have a visible landfill and recycle collection containers in an accessible location. The containers have clear signage.									
5	Very satisfactory - All studios / corridors (100%) have visible landfill and recycle collection containers in accessible locations. The containers have clear signage, and the style and format is consistent and uniform across campus.									
N/A	Does not apply									
Does the cafeteria (or wherever meals are served) have at least one of each: green compost bin, blue recycle bin, and landfill bin? Are the bins labelled clearly with bilingual and/or image sorting?				3				Comments	0.50 1.50	
1	Very unsatisfactory- There may be landfill bins, but there are no compost and/or recycle bins. There is not clear sorting signage.							<p>Only one waste station observed in the cafeteria with recycle, compost and landfill bins and visible signage.</p>		
2	Unsatisfactory- Recycle, landfill, and compost bins are present, but the bins are scattered and no co-located next to one another. Signage is absent or inconsistent.									
3	Average- There is at least one waste station with all three bins (recycle, compost, landfill) located with close proximity to one another. The signage is visible and consistent.									
4	Satisfactory- There are several waste stations as described above									
5	Very Satisfactory - There are several waste stations as described above, and additional signage in the cafeteria that encourages recycling/composting.									
N/A	Does not apply									



Austin ISD Educational Suitability Assessment Criteria

Academics - Middle School / High School

School Name

Walk Attendees:

Date:

Dobie MS

Anacleto Rojas and Vishwesh Panchal

1/13/2021

8 - Academics & Learning		1	2	3	4	5	N/A	65.00	54%
8.1	Are studios appropriately configured per the ed spec?			3				Comments	1.00 3.00
1	Very unsatisfactory - Too small, no flexibility, disconnected	<p>Current usage of some studios doesn't match with the original function that was intended for the space. Sixth grade studios are approximately 811 square feet in area. Typical studios in the main building are approximately 700 square feet. Campus has large corridors with some furniture for some break out learning.</p>							
2	Unsatisfactory - Too small, only one area for all teaching methods, limited flexibility, disconnected								
3	Neutral - Adequate size, multiple areas for different teaching methods, adequate flexibility, limited transparency and connection to other studios and shared learning spaces, needs updates or renovations to function well.								
4	Satisfactory - Good size, multiple areas for different teaching methods, good flexibility, good transparency and connection to other studios and shared learning spaces								
5	Very Satisfactory - Generous size, multiple areas for different teaching methods, excellent flexibility, generous display area and visual teaching tools, excellent transparency and connection with other studios and shared learning spaces								
N/A	Does not apply								
8.2	Do studios have appropriate support spaces such as storage per the ed spec?		2					Comments	1.00 2.00
1	Very unsatisfactory - None provided	<p>Storage space is not consistent in all the learning spaces. Some studios only have a small cabinet in the portion of the wall.</p>							
2	Unsatisfactory - Too small, disconnected, poor condition								
3	Neutral - Adequate size, average condition, needs updates or renovations to function well								
4	Satisfactory - Good size, connected, good condition								
5	Very Satisfactory - Generous size, connected, excellent condition								
N/A	Does not apply								

8 - Academics & Learning (cont.)		1	2	3	4	5	N/A		
8.3	Do typical learning neighborhoods have small and medium (high school only) group rooms and open collaboration space?	1						Comments	1.00 1.00
1	Very unsatisfactory - No breakout rooms or open collaboration spaces are provided								
2	Unsatisfactory - Too small or too few, poor condition, no flexibility, lacks visual connection to learning neighborhood, poor acoustic privacy								
3	Average - Adequate size, adequate condition, needs some renovations or updates to function well								
4	Satisfactory - Good size, good condition and flexibility, transparency and connection to learning neighborhood, acoustic privacy								
5	Very Satisfactory - Generous size, excellent condition and flexibility, transparency and connection to learning neighborhood, acoustic privacy								
N/A	Does not apply								
8.4	Are Science Labs and support spaces appropriately configured per the ed spec?			3				Comments	1.00 3.00
1	Very unsatisfactory - No dedicated science room							Rooms are adequate size and condition. Some cabinets and countertops need renovation.	
2	Unsatisfactory - Too small, poor condition, no connected support space								
3	Average - Adequate size, adequate condition, needs some renovations or updates to function well								
4	Satisfactory - Good size, good condition, connected support spaces								
5	Very Satisfactory - Generous size, excellent condition, connected support spaces								
N/A	Does not apply								
8.5	Are Maker Spaces and support spaces appropriately configured per the ed spec? (cross reference with CTE below)			3				Comments	1.00 3.00
1	Very unsatisfactory - No dedicated maker spaces							No designated Makers space but the provided space in room 100 is used for various purposes.	
2	Unsatisfactory - Too small, poor condition, disconnected from learning spaces, no flexibility								
3	Average - Adequate size, adequate condition, needs some renovations or updates to function well								
4	Satisfactory - Good size, good condition, connected to learning spaces								
5	Very Satisfactory - Generous size, excellent condition, connected to learning spaces								
N/A	Does not apply								

8 - Academics & Learning (cont.)		1	2	3	4	5	N/A			
8.6	Is there a Professional Learning Center in the learning neighborhood?	1						Comments	1.00 1.00	
1	Very unsatisfactory - No dedicated space for Professional Learning Center							No designated PLC space		
2	Unsatisfactory - Too small, poor condition, disconnected									
3	Average - Adequate size, adequate condition, needs some renovations or updates to function well									
4	Satisfactory - Good size, good condition, connected									
5	Very Satisfactory - Generous size, excellent condition, connected									
8.7	Are there adequate places to display the evidence and artifacts of learning (both 2D and 3D)?				4			Comments	1.00 4.00	
1	Very unsatisfactory - No dedicated space							Campus has some large display cases and wall space to display student work.		
2	Unsatisfactory - Too small, non-dedicated, poor condition									
3	Average - Adequate size, adequate condition, needs updates or renovations to function well									
4	Satisfactory - Good size, good condition									
5	Very Satisfactory - Generous size, excellent condition									
N/A	Does not apply									
8.8	Does the building / learning neighborhood provide adequate opportunities for students/teachers to collaborate in varying group sizes?			3				Comments	1.00 3.00	
1	Very unsatisfactory - No space to support collaboration in various sizes.							Only spaces in the large spaces in the corridors equipped with variety of furniture.		
2	Unsatisfactory - Too small, inflexible, only one option, does not support a variety of group sizes									
3	Average - Adequate space for collaboration, needs updates or renovations to function well.									
4	Satisfactory - Good size, good condition, multiple options to support a variety of group sizes									
5	Very Satisfactory - Generous size, excellent condition, multiple options to support a variety of group sizes									
N/A	Does not apply									
8.9	Does the building provide opportunities for informal interaction?				4			Comments	1.00 4.00	
1	Very unsatisfactory - No space							The first floor of the building has a large space in the corridor with a variety of furniture to promote informal interaction.		
2	Unsatisfactory - Too small, poor condition, layout and furnishings do not support informal interaction well									
3	Average - Adequate size and condition, needs updates or renovations to function well.									
4	Satisfactory - Good size, good condition, layout and furnishings support informal interactions									
5	Very Satisfactory - Generous size, excellent condition, layout and furnishings support informal interactions									
N/A	Does not apply									

8 - Academics & Learning (cont.)		1	2	3	4	5	N/A			
8.10	Does the building provide adequate opportunities for students to work independently?	1						Comments	1.00 1.00	
1	Very unsatisfactory - No breakout rooms/small study spaces							The only spaces are limited to the corridor. No dedicated break out rooms.		
2	Unsatisfactory - Too small, poor condition, no acoustic privacy, only one space for independent work, disconnected from learning neighborhood									
3	Average - Adequate size and condition, needs updates or renovations to function well.									
4	Satisfactory - Good size and condition, acoustic privacy, variety of independent work space options, connected to learning neighborhood									
5	Very Satisfactory - Generous size, excellent condition, acoustic privacy, variety of independent work space options, connected to learning neighborhood									
N/A	Does not apply									
Special Education										
8.11	Are Special Education spaces appropriately configured per the ed spec?		2					Comments	1.00 2.00	
1	Very unsatisfactory - Too small, no flexibility, disconnected							Small sized SPED spaces, approximately 574 square feet.		
2	Unsatisfactory - Too small, only one area for all teaching methods, limited flexibility, disconnected									
3	Neutral - Adequate size, multiple areas for different teaching methods, adequate flexibility, limited transparency and connection to other studios and shared learning spaces, needs updates or renovations to function well.									
4	Satisfactory - Good size, multiple areas for different teaching methods, good flexibility, good transparency and connection to other studios and shared learning spaces									
5	Very Satisfactory - Generous size, multiple areas for different teaching methods, excellent flexibility, generous display area and visual teaching tools, excellent transparency and connection with other studios and shared learning spaces									
N/A	Does not apply									
8.12	Are Special Education support spaces, such as storage, space for washer/dryer, appropriately configured per the ed spec?			3				Comments	1.00 3.00	
1	Very unsatisfactory - None provided							Washer/dryer provided within studio space.		
2	Unsatisfactory - Too small, disconnected, poor condition									
3	Neutral - Adequate size, average condition, needs updates or renovations to function well									
4	Satisfactory - Good size, connected, good condition									
5	Very Satisfactory - Generous size, connected, excellent condition									
N/A	Does not apply									

8 - Academics & Learning (cont.)		1	2	3	4	5	N/A			
8.13	Are Accessible restrooms and changing rooms readily available to the Special Education spaces?					5		Comments	1.00 5.00	
1	No								One restroom adequately sized with a hand shower and a changing table.	
5	Yes									
STEAM Center										
8.14	Does the campus have space to support a "STEAM" center?			3				Comments	0.00 0.00	
1	Very unsatisfactory - No available space for STEAM center and inadequate studio / collaborative space								Monitoring answer, but does not count towards overall score. Room 100 varies in function depending on the staff hired to teach a particular subject. This space has functioned as a STEAM center previously.	
2	Unsatisfactory - Collaborative areas / studios for CTE/CCL are completely separate but adequate size									
3	Neutral - Collaborative areas / studios for CTE/CCL are adjacent but function separately									
4	Satisfactory - Collaborative areas / studios for CTE/CCL function and have space availability to create STEAM center									
5	Very Satisfactory - Functioning STEAM center offers studios, labs, common collaborative areas to support multimedia distance and hands-on project based learning									
N/A	Does not apply									
9 - CTE and Career Connected Learning									16.25 57%	
9.1	How close is your campus to a CTE cluster pathway that is aligned with your CTE programs (Middle School only)?			3				Comments	1.00 3.00	
1	Very unsatisfactory - No correlation to CTE cluster pathway, no CTE programs.								Campus supports half of the programs listed in the cluster pathway. Campus has a culinary program, but is not offered at the feeder high schools.	
2	Unsatisfactory - School supports less than half of the CTE programs that are listed in the cluster pathway.									
3	Average - School support half of CTE programs listed in the cluster pathway, but missing some.									
4	Satisfactory - School support a majority of CTE programs listed in the CTE cluster pathway.									
5	Very Satisfactory - School is aligned with CTE cluster pathway.									
N/A	Does not apply									
9.2	Do campus facilities align with the CTE Ed Spec Requirements for the current pathways offered?: Architecture and Construction	1							0.25 0.25	
1	No									
5	Yes									
N/A	Does not apply									
9.3	Arts, Audio and Video Technology and Communications					5			0.25 1.25	
9.4	Business, Management and Administration	1							0.25 0.25	
9.5	Education and Training						N/A		0.00 0.00	
9.6	Health Science	1							0.25 0.25	

9 - CTE and Career Connected Learning (cont.)		1	2	3	4	5	N/A			
9.7	Hospitality and Tourism					5			0.25 1.25	
9.8	Human Services (high school only)						N/A		0.00 0.00	
9.9	Information Technology					5			0.25 1.25	
9.10	Agriculture, Food and Natural Resources	1							0.25 0.25	
9.11	Science, Technology, Engineering, and Mathematics					5			0.25 1.25	
9.12	Transportation, Distribution and Logistics	1							0.25 0.25	
9.13	Finance (high school only)						N/A		0.00 0.00	
9.14	Government and Public Administration / JROTC Military programs (high school only)						N/A		0.00 0.00	
9.15	Law, Public Safety, Corrections and Security (high school only)						N/A		0.00 0.00	
9.16	Manufacturing (high school only)						N/A		0.00 0.00	
9.17	Marketing, Sales and Services (high school only)						N/A		0.00 0.00	
10 - Visual and Performing Arts									35.00 51%	
10.1	Is there flexibility of space to also be used by CTE and Athletics?	1						Comments	0.00 0.00	
	1 No 5 Yes							Monitoring answer, but doesn't affect overall score.		
10.2	Are band and support spaces (rehearsal and storage) appropriately configured per the ed spec?			3				Comments	1.00 3.00	
	1 Very unsatisfactory - Too small, missing program spaces 2 Unsatisfactory - Too small, poor condition 3 Neutral - Adequate size, adequate condition, needs updates or renovations to function well. 4 Satisfactory - Good size, good condition 5 Very Satisfactory - Generous size, excellent condition N/A Does not apply							Band/choir disconnected from the stage		
10.3	Are orchestra and support spaces appropriately configured per the ed spec?			3				Comments	1.00 3.00	
	1 Very unsatisfactory - Too small, missing program spaces 2 Unsatisfactory - Too small, poor condition 3 Neutral - Adequate size, adequate condition, needs updates or renovations to function well. 4 Satisfactory - Good size, good condition 5 Very Satisfactory - Generous size, excellent condition N/A Does not apply							Orchestra space located near cafeteria stage area, but disconnected from to the band or choir. Storage is shared with adjacent space.		

10 - Visual and Performing Arts (cont.)		1	2	3	4	5	N/A		
10.4	Are choir and support spaces appropriately configured per the ed spec?			3				Comments	1.00 3.00
	1 Very unsatisfactory - Too small, missing program spaces 2 Unsatisfactory - Too small, poor condition 3 Neutral - Adequate size, adequate condition, needs updates or renovations to function well. 4 Satisfactory - Good size, good condition 5 Very Satisfactory - Generous size, excellent condition N/A Does not apply	Choir room located on second floor disconnected from performing arts spaces of auditorium or cafeteria stage on 1st floor.							
10.5	Are dance and support spaces appropriately configured per the ed spec?		2					Comments	1.00 2.00
	1 Very unsatisfactory - Too small, missing program spaces 2 Unsatisfactory - Too small, poor condition 3 Neutral - Adequate size, adequate condition, needs updates or renovations to function well. 4 Satisfactory - Good size, good condition 5 Very Satisfactory - Generous size, excellent condition N/A Does not apply	Rm 114 - Dance room. Far from the auditorium and Stage. Adequate storage. Practice rooms acoustics are not good.							
10.6	Are theater and support spaces appropriately configured per the ed spec?				4			Comments	1.00 4.00
	1 Very unsatisfactory - Too small, missing program spaces 2 Unsatisfactory - Too small, poor condition 3 Neutral - Adequate size, adequate condition, needs updates or renovations to function well. 4 Satisfactory - Good size, good condition 5 Very Satisfactory - Generous size, excellent condition N/A Does not apply	Campus has a dedicated auditorium with a connected learning space. In addition, the campus has a stage at the cafeteria.							
10.7	Are visual arts and support spaces appropriately configured per the ed spec?		2					Comments	1.00 2.00
	1 Very unsatisfactory - Too small, missing program spaces 2 Unsatisfactory - Too small, poor condition 3 Neutral - Adequate size, adequate condition, needs updates or renovations to function well. 4 Satisfactory - Good size, good condition 5 Very Satisfactory - Generous size, excellent condition N/A Does not apply	Art room located in a separate annex building for 6th grade students. 7th and 8th grade students walk to annex to share art rooms							
10.8	Does the campus have adequate space for the specialty arts programs (Ensemble, Guitar, Music studies, Music theory and Piano)?	1						Comments	1.00 1.00
	1 No 5 Yes	No space dedicated for ensemble, guitar or piano.							

11 - Athletics and Wellness							18.75	68%	
11.1	Does the campus meet ed spec standard for physical education program spaces?			4			Comments	1.00	4.00
1	Very unsatisfactory - Too small, missing program spaces	Screen present but no projections. Locker rooms in decent condition. HVAC noise in the main gym is very loud and distracting. Storage is adequate. Outlets are old and very few in the gym.							
2	Unsatisfactory - Too small, poor condition								
3	Average - Adequate size, adequate condition, needs some renovations or updates to function well								
4	Satisfactory - Good size, good condition								
5	Very Satisfactory - Generous size, excellent condition								
N/A	Does not apply								
11.2	Does the campus have a dedicated wellness center?			5			Comments	0.50	2.50
1	No	Small office space converted into a wellness counseling space to students.							
5	Yes								
11.3	Does the community have access to exterior playfields/courts?			5			Comments	0.50	2.50
1	No								
5	Yes								
11.4	Are facilities available to facilitate eSports (High School only)?				N/A		Comments	0.00	0.00
1	No	Monitoring answer, but doesn't affect overall score.							
5	Yes								
11.5	Are facilities set up to support UIL sanctioned athletics for basketball?			5			Comments	0.25	1.25
1	No	Main gym is configured to accommodate basketball.							
5	Yes								
11.6	Are facilities set up to support UIL sanctioned athletics for track?	1					Comments	0.25	0.25
1	No	The campus doesn't have a quarter mile track.							
5	Yes								
11.7	Are facilities set up to support UIL sanctioned athletics for football?	1					Comments	0.25	0.25
1	No	Field is not in adequate condition and does not have a scoreboard or equipment.							
5	Yes								
11.8	Are facilities set up to support UIL sanctioned athletics for volleyball?			5			Comments	0.25	1.25
1	No	Main gym is configured to accommodate volleyball games.							
5	Yes								
11.9	Are facilities set up to support UIL sanctioned athletics for tennis?	1					Comments	0.25	0.25
1	No	Tennis courts in poor condition. Two courts but only one net is in place.							
5	Yes								
11.10	Are facilities set up to support UIL sanctioned athletics for soccer?	1					Comments	0.25	0.25
1	No	Field is not in adequate condition and does not have a scoreboard or equipment.							
5	Yes								

11 - Athletics and Wellness (cont.)		1	2	3	4	5	N/A		
11.11	Are facilities (dedicated storage) set up to support UIL sanctioned athletics for cross-country (high school only)?						N/A	Comments	0.00 0.00
	1 No 5 Yes								
11.12	Are facilities (dedicated storage) set up to support UIL sanctioned athletics for golf (high school only)?						N/A	Comments	0.00 0.00
	1 No 5 Yes								
11.13	Are facilities (dedicated storage) set up to support UIL sanctioned athletics for swimming (high school only)?						N/A	Comments	0.00 0.00
	1 No 5 Yes								
11.14	Are facilities set up to support UIL sanctioned athletics for wrestling (high school only)?						N/A	Comments	0.00 0.00
	1 No 5 Yes								
11.15	Are facilities set up to support UIL sanctioned athletics for baseball (high school only)?						N/A	Comments	0.00 0.00
	1 No 5 Yes								
11.16	Are facilities set up to support UIL sanctioned athletics for softball (high school only)?						N/A	Comments	0.00 0.00
	1 No 5 Yes								
11.17	Are facilities (dedicated space outside of the gymnasium) available to support competitive spirit activities for cheerleading and drill team?	1						Comments	0.25 0.25
	1 No 5 Yes							No dedicated space specifically for competitive spirit activities.	
11 - Athletics and Wellness (cont.)		1	2	3	4	5	N/A		
11.18	How do the athletics fields align with FMP Campus Improvements? Turf Field, Parking lot lighting, ADA accessible amenities (high School only)						N/A	Comments	0.00 0.00
	1 Very unsatisfactory - No turf, inaccessible, no site lighting 2 Unsatisfactory - No turf/field in poor condition, some accessibility concerns, poor site lighting 3 Average - Field in adequate condition, needs some updates or renovations to function well 4 Satisfactory - Turf field in good condition, good ADA access and site lighting 5 Very Satisfactory - Turf field with excellent maintenance, excellent ADA access for spectators and athletes, excellent site lighting N/A Does not apply.							Monitoring answer, but doesn't affect overall score.	

12 - Food Services							10.00	60%	
12.1	Is the Dining Commons appropriately configured per the ed spec?			3			Comments	1.00	3.00
1	Very unsatisfactory - Too small, missing program spaces							Space is in good condition. Undersized slightly based on campus capacity. Currently at 4,700 SF and is about 400SF too small.	
2	Unsatisfactory - Too small, poor condition, only one option for eating space provided, inadequate circulation								
3	Average - Adequate size and condition, needs updates or renovations to function well								
4	Satisfactory - Good size and condition, good circulation, multiple options for eating space (ex: connection to outdoor eating space)								
5	Very Satisfactory - Generous size, excellent condition and circulation, multiple options for eating space (ex: connection to outdoor eating space)								
N/A	Does not apply								
12.2	Are the Food Services support spaces appropriately configured per the ed spec?			3			Comments	1.00	3.00
1	Very unsatisfactory - None provided							Space is in good condition. Kitchen slightly undersized but two serving lines are in good condition.	
2	Unsatisfactory - Too small, disconnected, poor condition								
3	Neutral - Adequate size, average condition, needs updates or renovations to function well								
4	Satisfactory - Good size, connected, good condition								
5	Very Satisfactory - Generous size, connected, excellent condition								
N/A	Does not apply								
13 - Media Resources							30.00	60%	
13.1	Is the Library/Media Center easily accessible for the occupants and visitors to the school?			3			Comments	1.00	3.00
1	Very unsatisfactory - Not accessible							Located on 2nd floor. Not convenient to access for all visitors with only one elevator for the entire building. Noted that elevator has had issues in the past that has taken months to repair due to special parts needed to replace.	
2	Unsatisfactory - Limited access, difficult to find, no transparency								
3	Average - Adequate accessibility, needs updates or renovations to function well								
4	Satisfactory - Accessible, easy to find, good transparency, good condition								
5	Very Satisfactory - Accessible, easy to find, excellent transparency, excellent condition								
N/A	Does not apply								

13 - Media Resources - Continued		1	2	3	4	5	N/A			
13.2	How well does the Library/Media Center support quiet study?			3				Comments	1.00 3.00	
1	Very unsatisfactory - No quiet study spaces							Library is one open space primarily. Does not have any dedicated small rooms.		
2	Unsatisfactory - One area in poor condition, poor acoustic privacy									
3	Average - One or more areas provided, needing updates or renovations to function well									
4	Satisfactory - Clusters or small rooms adjacent to media center, good condition, good acoustic privacy									
5	Very Satisfactory - Multiple clusters or small rooms adjacent to media center, excellent condition, excellent acoustic privacy									
N/A	Does not apply									
13.3	How well does the Library/Media Center support social interaction?			3				Comments	1.00 3.00	
1	Very unsatisfactory - No space							Appears to have furniture conducive to promoting social interaction.		
2	Unsatisfactory - Too small, poor condition, layout and furnishings do not support informal interaction well									
3	Average - Adequate size and condition, needs updates or renovations to function well.									
4	Satisfactory - Good size, good condition, layout and furnishings support informal interactions									
5	Very Satisfactory - Generous size, excellent condition, layout and furnishings support informal interactions									
N/A	Does not apply									
13.4	How well does the Library/Media Center support collaborative work in small groups (4-8 students)?			3				Comments	1.00 3.00	
1	Very unsatisfactory - No breakout rooms, no flexible furniture, no support							They have rooms that can be potentially used as small or large groups which are connected to the library. Currently used for other programs.		
2	Unsatisfactory - Too small, one area, poor condition									
3	Average - Adequate size, multiple areas provided, needing updates or renovations to function well									
4	Satisfactory - Clusters or small rooms adjacent to media center, flexible furniture, good condition									
5	Very Satisfactory - Multiple clusters or small rooms adjacent to media center, flexible furniture, excellent condition									
N/A	Does not apply									
13.5	How well does the Library/Media Center support collaborative work in larger groups (10-25)?			3				Comments	1.00 3.00	
1	Very unsatisfactory - No gathering areas							They have rooms that can be potentially used as small or large groups which are connected to the library. Currently used for other programs.		
2	Unsatisfactory - Too small, one common space, limited seating, poor condition									
3	Average - Adequate size, one common space, needs updates or renovations to function well									
4	Satisfactory - Good size, multiple common spaces with seating, good condition									
5	Very Satisfactory - Generous size, multiple commons spaces with seating, excellent condition									
N/A	Does not apply									

13 - Media Resources - Continued		1	2	3	4	5	N/A			
13.6	How well does the Library/Media Center support technology?			3				Comments	1.00 3.00	
1	Very unsatisfactory - No vis comm tools							Mix of old and new technology.		
2	Unsatisfactory - Outdated, poorly functioning, or insufficient									
3	Average - Mix of old and new whiteboards/projectors/etc.									
4	Satisfactory - projectors, marker boards, smart boards in most spaces - good condition									
5	Very Satisfactory - projectors, marker boards, smart boards in most spaces - new condition									
N/A	Does not apply									
14 - Technology		1	2	3	4	5	N/A		20.00 50%	
14.1	How well equipped are the facilities with instructional technology?			3				Comments	1.00 3.00	
1	Very unsatisfactory - Limited to no technology present in instructional spaces							Newer 6th grade building consistent with large mobile monitors and projectors. Main building has some older equipment and some new.		
2	Unsatisfactory - One type of technology present									
3	Average - Multiple types of technology, smart boards. Poor condition. Limited to only certain areas of school.									
4	Satisfactory - Multiple types of technology, smart boards. Good condition.									
5	Very Satisfactory - Multiple types of technology, smart boards. Excellent condition									
N/A	Does not apply									
14.2	Is there an adequate number of power and data outlets in learning spaces?			3				Comments	1.00 3.00	
1	Very unsatisfactory - Outlet configuration does not support digital devices throughout school (1 per wall)							Most studios have 3 outlets per wall. Some studios using extension cords with power strips.		
2	Unsatisfactory - Outlet configuration support digital devices only in certain areas of school (2 per wall)									
3	Average - Outlet configuration support digital devices but limited capacity throughout school (3 per wall)									
4	Satisfactory - Outlet configuration support digital devices with adequate coverage and capacity in limited locations (>3 per wall)									
5	Very Satisfactory - Excellent outlet configuration to support digital devices throughout school (>3 per wall)									
N/A	Does not apply									

14 - Technology (cont.)		1	2	3	4	5	N/A			
14.3	Are there adequate charging locations for devices?		2					Comments	1.00 2.00	
1	Very unsatisfactory - Not enough charging locations throughout school for 1:1							Some studios have new pole extension chord which helps but does look cluttered and does not solve the main issue. Most studios have limited amount of outlets per wall. Some studios using extension cords with power strips.		
2	Unsatisfactory - Charging locations, haphazard locations, and inadequate in size for number of devices									
3	Average - Charging locations well organized but not enough capacity for 1:1									
4	Satisfactory - Charging locations, haphazard locations, but supports 1:1.									
5	Very Satisfactory - Charging locations throughout school to support 1:1.									
N/A	Does not apply									
14.4	Is there adequate AV for presentations spaces – cafeteria, gym, aux gym?		2					Comments	1.00 2.00	
1	Very unsatisfactory - AV not present in one or more space							Small projection screens in the gym, and no screen in auxiliary gym. Cafeteria stage not set up with a permanent screen.		
2	Unsatisfactory - AV undersized for room. Poor condition									
3	Average - AV adequately sized / poor condition OR AV undersized / average condition									
4	Satisfactory - AV adequately sized for room. Average Condition.									
5	Very Satisfactory - AV adequately sized for room. Excellent condition.									
N/A	Does not apply									
14.5	Is there digital media signage at the reception area?				4			Comments	0.00 0.00	
1	Very unsatisfactory - No digital media present in reception area							Reception at Main Office has a flat panel screen for media signage.		
2	Unsatisfactory - Undersized, poor condition									
3	Average - Adequately sized / poor condition OR undersized / adequate condition									
4	Satisfactory - Media signage present, good sized, good condition									
5	Very Satisfactory - Generously sized, excellent condition									
N/A	Does not apply									

