

## **Educational Suitability Summary Report**

Crockett Early College High School

Date: 01/28/2021

**Score 55% Average**

Crockett Early College High School serves an enrollment of approximately 1,560 students in south Austin and is known for its career and technology programs. The school offers articulated classes and certifications for students so that they may graduate ready to enter the workforce. The automotive and construction programs are of particular interest, as each are in specialized facilities with a wide range of equipment and classes. It was built in 1969 and consists of approximately 350,000 square feet on 40 acres.

The building is laid out around large open courtyards wrapped by wide outdoor walkways. Although the campus takes pride in its outdoor spaces, updates to landscaping and furniture could increase opportunities for outdoor learning. Once you enter the studio wings around the central courtyard, the arrangement of typical studios is clustered in groups of six to eight. The studios are wrapped around a large group office, storage and other support spaces. In each pod, there are no collaboration or breakout areas that aid in flexible teaching. The building layout allows for the ability to reconfigure pods to provide breakout areas and other support spaces. Renovations would be required for the campus to align more closely with the new Educational Specifications.

Athletics spaces are original and outdated. Locker facilities are in poor condition, have accessibility issues, and do not have hot water. The weight room, trainer and other support spaces are not properly sized to support current student enrollment. The athletics fields do not have lights, creating scheduling issues and safety concerns that prevent the school from hosting baseball, softball, track or soccer. Band spaces are too small and lack adequate storage. Various band programs take place in retrofitted rooms lacking the required acoustic performance. Significant upgrades will be required to bring these spaces up to the level of other AISD facilities and the new Educational Specifications.

### **Interview Overview**

The interview with Principal Kori Crawford and other staff members was very productive due to the detailed preparation of the Crockett team. The team takes significant pride in their school and feels that with improvements to furniture and finishes, the school could attract more students. Community members and staff have expressed frustrations regarding equity between schools. Other high schools in the area have received renovations and additions, which they said has created a challenge for campus staff to show students and families the programs that are offered at Crockett High School. They said that the older, outdated aesthetic of the campus is hampering the public's perception of the school.

They also noted the athletics facilities as an important discussion point because these spaces are often the only impression that community members get of the school. Staff and students take pride in their facilities, but the existing condition makes it difficult to convey to the rest of the community. There is a desire for a complete replacement of the athletics wing, including an additional

replacement gym. This replacement would include new locker facilities, a dedicated weight room and updated training facilities. The outdoor play fields need better access and lighting so that teams can practice, host events and have increased safety.

Other needs include a dedicated maker space, dedicated storage space for performing arts programs, general building storage, and additional studios for expanding CTE programs. Licensing and student- to-instructor ratios for these specialized programs create scheduling issues.



**Assessment Findings**

The Educational Suitability Assessment of Crockett Early College High School earned a 55% overall score and places the campus in a category of Average. The assessment consists of seven General Building categories and eight Academic categories to determine areas that need more attention.

**Very Unsatisfactory Categories (0-35%):**

**Controllability of Systems**

Score is very unsatisfactory.

Many spaces are missing blinds, or the blinds are in poor condition. Artificial lighting controls vary across campus but are predominately limited to one on/off switch. Some spaces do have alternating rows or lighting zones for slightly improved conditions. It appears that thermostats are grouped and serve multiple studios.

**Unsatisfactory Categories (36-50%):**

**Exterior**

Score is unsatisfactory.

Traffic circulation for vehicular, bus and pedestrian traffic is not clearly noted. The bus drop-off loop shares an entrance and exit with two parking areas. Student parking stretches far from the main building. Sports field parking is undersized and often far from the fields. Additionally, building signage and wayfinding is present, but not conveniently located for optimal use. The fields are adequate in size but could be more appropriately located in relation to the gym and parking.

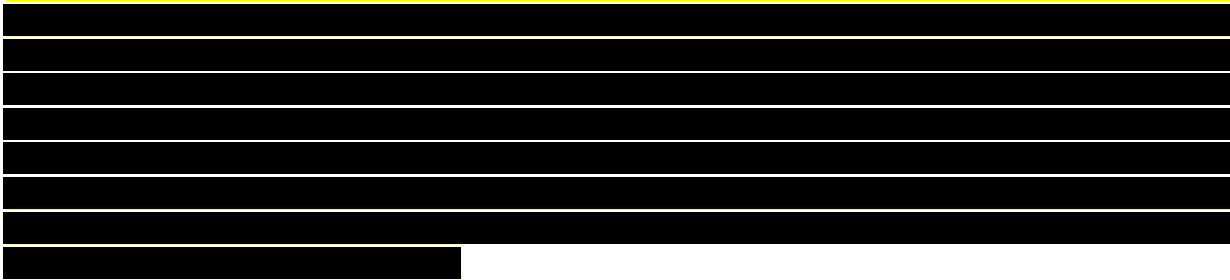
**General Building**

Score is unsatisfactory.

The general appearance of the school is aged, but adequately maintained. The arrangement of school spaces allows for convenient nighttime use of the school and the corridors are average width. A community room is not provided.

**Security**

Score is unsatisfactory.



**Furniture, Fixtures, Equipment**

Score is unsatisfactory.

The furniture appears to be in satisfactory condition but does not allow for easy reconfiguration of the space for different learning groups. The principal expressed concern over the quantity and quality of furniture. Although it has all been recently acquired, the furniture does not meet the needs of a growing enrollment. Furniture replacement needs to occur to meet the Educational Specifications.

**Athletics and Wellness**

Score is unsatisfactory.

The athletic spaces utilize aged equipment and are insufficient to accommodate the enrollment. Support spaces such as locker rooms are undersized and aged and pose ADA compliance issues. Typical of high schools built during this time period, the locker rooms are compartmentalized and separated by 6-inch curbs to help isolate “dry” spaces from “wet” spaces. Training equipment and space is undersized given the enrollment.

**Technology**

Score is unsatisfactory.

Projector age and quality varies throughout campus. The studios are typically served by a couple of computers that are dated or near the end of life. The number of data and power outlets serving a standard studio is adequate given the low demand. However, more specialized spaces (i.e., computer labs, CTE spaces, etc.) that demand power and data are underserved by existing utilities.

**Administration Spaces**

Score is unsatisfactory.



It is difficult to find the administration area. Once you enter the suite, the reception area is dark and has no natural daylight. Noise travels easily from lobby to office spaces. The conference rooms are easily accessible but have limited transparency.

**Average Categories (51-65%):**

**Academics & Learning**

Score is average.

Studio wings do not meet the intent of the new Education Specifications, but with renovations this would be achievable. Most studios and labs have the correct technology, but markerboards need upgrades. The special education space is adequately sized but needs cosmetic and functional

upgrades. The main entrance to the space is accessed from the exterior of the building and provides an uncovered entrance for students with mobility impairments. Equipment (kitchen, lifts, changing tables, etc.) are past their life cycle and function poorly or not at all.

**Visual and Performing Arts**

Score is average.

The performing arts spaces are at the bottom of the rankings in both main class space (band halls, choir, etc.) and storage and practice room spaces. Acoustics, lighting, insufficient storage, aged equipment and only a minimal number of practice spaces are among the primary concerns. Visual arts spaces are undersized and served by aged equipment and insufficient storage space. The theater balances out the score and brings the fine arts to the score of average.

**Satisfactory Categories (66-80%):****Outdoor Learning and Activity**

Score is satisfactory.

Outdoor learning opportunities are present in several courtyards throughout campus. Many of these courtyards offer shade. Improvements in maintenance and the addition of features (seating, elements of learning, etc.) would improve the usability of these spaces. Mosquitos are often an issue to staying in these spaces for extended learning times.

**Environmental Quality**

Score is satisfactory.

Most spaces have natural light, although minimal in many cases. These small windows offer very little in terms of exterior views. The principal reports consistent issues with rodents (especially in the science wing), including ants, roaches, mosquitos and bees (predominately in courtyard spaces).

**CTE and Career Connected Learning**

Score is satisfactory.

The computer technology and audio/visual classes are being housed in standard studio spaces.

**Food Services**

Score is satisfactory.

While the cafeteria features a variety of seating types, the overall capacity of the seating space and serving lines are inadequate when handling the volume of students.

**Media Resources**

Score is satisfactory.

The library offers space and flexibility for collaborative work of different group sizes. A variety of furniture types and groupings support social interaction and separation for areas of individual study. The library has adequate technological support. One issue is how to increase space and equipment capacity to accommodate a growing student population.



**Supporting Photographs**



*Brick and painted concrete are in good condition and feel solid.*



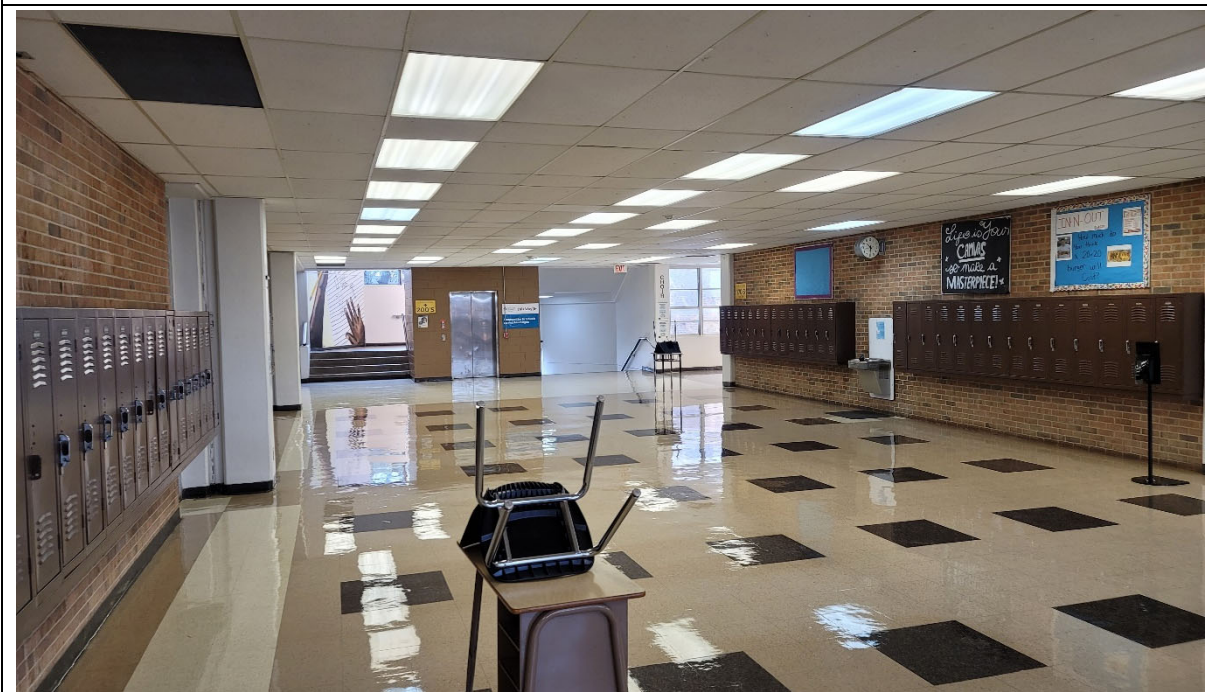
*Central courtyard requires upgrades to function as an outdoor learning space. The school is requesting new sod or permeable turf to prevent mud within the courtyard.*



**Supporting Photographs**



*Library has good daylight and many areas for studying in various group sizes.*



*Several areas throughout campus could be used as informal or collaboration space with upgraded furniture.*



**Supporting Photographs**



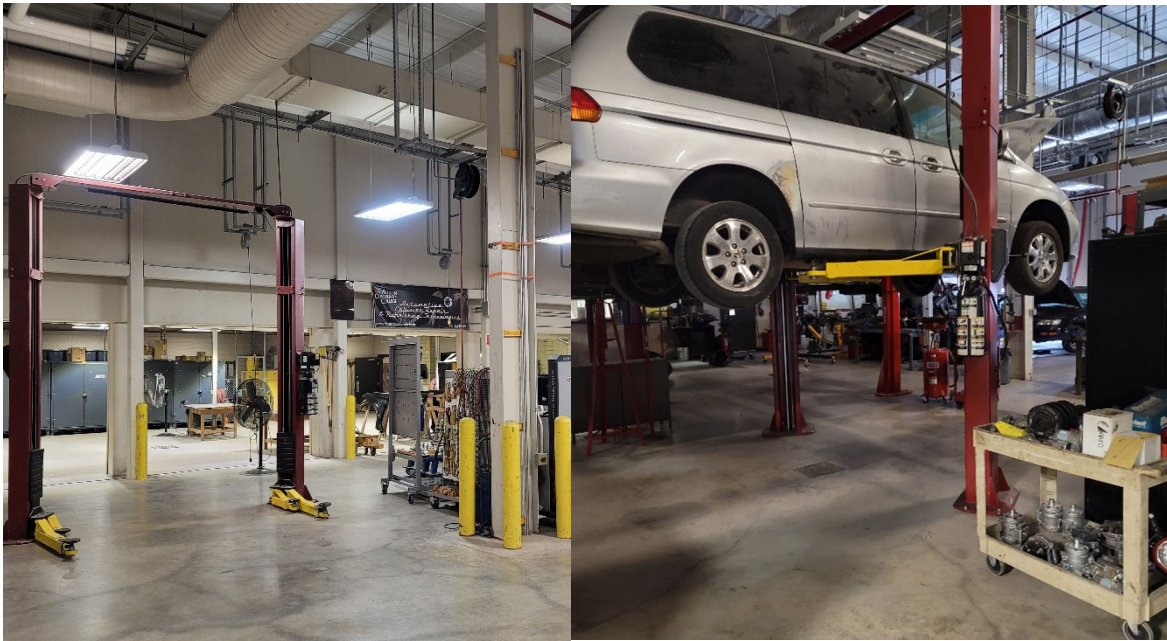
*Current storage and support areas in learning pods are inefficient and are not well-used spaces.*



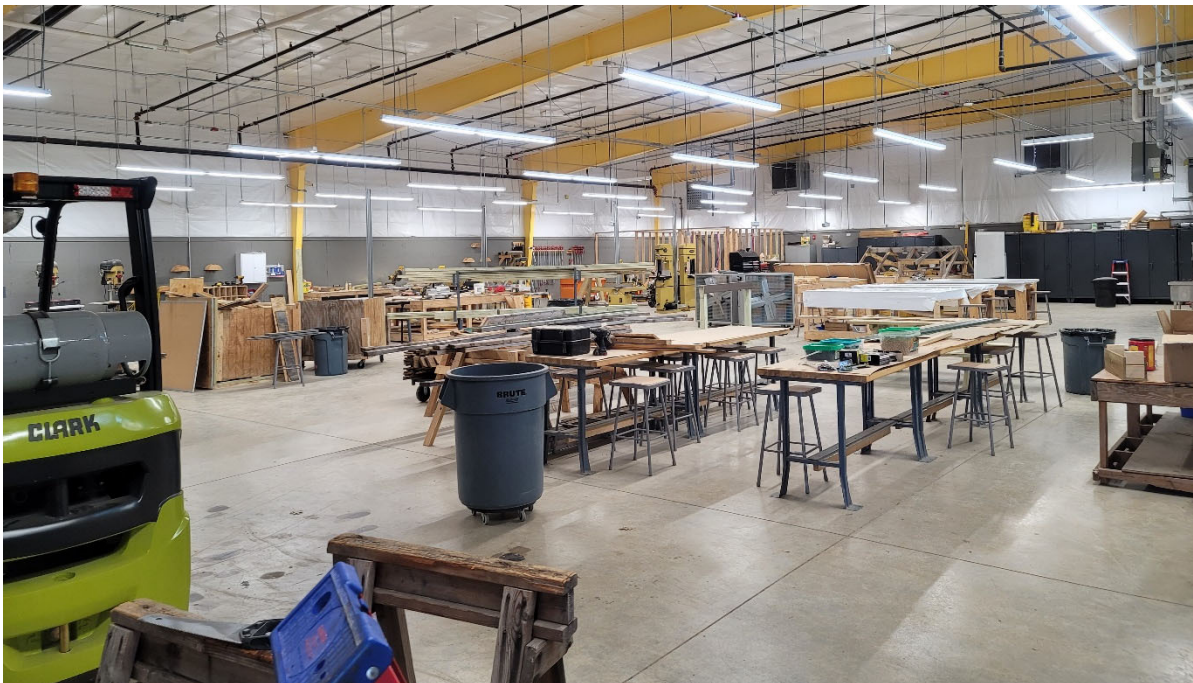
*Typical studios have small windows and limited controls of artificial lighting.*



**Supporting Photographs**



*Automotive shop is spacious with impressive variety of equipment. The school notes ongoing HVAC issues with this space.*



*Construction building is new and has good amount of space.*



**Supporting Photographs**



*Main gym is in average condition despite being original to the school.*



*Boys' and girls' locker room is dated and in poor condition*



**Austin ISD Educational Suitability Assessment Criteria**  
**General Building**

**School Name**

Crockett High School

**Walk Attendees:**

Koleman Uresti, Kevin Kinsey

**Date:**

1/28/2021

1 - Exterior		1	2	3	4	5	N/A	8.75	40%	
1.1	Does the site permit desirable separation of vehicular, bus and pedestrian traffic?		2					Comments	1.00	2.00
	1 Very unsatisfactory - Bus, car and pedestrian all happen at the same location							The majority of parking is in the front of the school in undersized lots. The main bus loop enters and exits at the same location as the parking lots. Very limited parking for the athletic fields, and student parking lot is not clearly marked.		
	2 Unsatisfactory - Cars and buses mix, pedestrians are separated									
	3 Average - Buses, cars, and pedestrians are separate but stack space is small									
	4 Satisfactory - Buses, cars, and pedestrians are separate but drop off does not have a canopy or a holding place like a commons or cafeteria									
	5 Very satisfactory - Buses, cars, and pedestrians are separate and drop off area has a canopy and									
	N/A Does not apply									
1.2	Is the building easily identified with appropriate signage and community wayfinding?		2					Comments	0.25	0.50
	1 Very unsatisfactory - Campus has no signage / wayfinding							The school sits on a corner lot, making the building easily seen. Digital monument sign is visible from Menchaca Road but signage on Stassney Lane is poor. Limited indicators as to where the front door is.		
	2 Unsatisfactory - Signage/wayfinding is faded/hidden									
	3 Average - Signage / wayfinding visible but not apparent									
	4 Satisfactory - Signage / wayfinding is visible but not good condition									
	5 Very satisfactory - Signage and wayfinding is visible and easy to use									
	N/A Does not apply									



1 - Exterior (cont.)		1	2	3	4	5	N/A		
1.3	Is the dumpster accessible for trash / compost disposal?		2					Comments	0.50 1.00
1	Very unsatisfactory - No compost present, route has obstacles (stairs, curbs, barriers) to dumpster							All bins are present, but route is not barrier free. No ramp from loading dock to dumpsters. Location of dumpsters is in sight line of outdoor courtyard that students use to dine in.  School notes security around the bins to limit community dumping.	
2	Unsatisfactory - Compost is present. Route has obstacles to dumpster								
3	Average - Compost is present (<100' to cafeteria), Route to dumpster is free and clear but the two are not directly adjacent.								
4	Satisfactory - Compost and dumpster are directly adjacent and route is barrier free								
5	Very Satisfactory - Compost and dumpster are directly adjacent and route is barrier free. Dumpster are shaped / positioned so people of all heights can access it.								
N/A	Does not apply								
2 - Outdoor Learning and Activity		1	2	3	4	5	N/A	10.00	70%
2.1	Are outdoor studios and support spaces appropriately configured per the ed spec?		2					Comments	1.00 2.00
1	Very unsatisfactory - No dedicated outdoor studios							Many spaces around campus could be used for outdoor learning, but currently do not function as such. An outdoor classroom pavilion with solar panels sits near the entry to the school but is unused because it does not provide enough seating. The courtyards and covered spaces could function well for outdoor learning if they had improved furniture and technology. Campus indicated that the courtyards cannot be used until they dry out after it rains and until mosquitoes and wasps are gone.	
2	Unsatisfactory - Too small, poor condition, disconnected from learning spaces, no flexibility, no shade provided								
3	Average - Adequate size, adequate condition, needs some renovations or updates to function well, 50% or less shade coverage over studio area								
4	Satisfactory - Good size, good condition, connected to learning spaces, good flexibility, more than 50% shade coverage over studio area								
5	Very satisfactory - Generous size, excellent condition, connected to learning spaces, excellent flexibility, full shade coverage over studio area								
N/A	Does not apply								
2.2	Are active playgrounds (elementary only) and support spaces configured per the ed spec?						NA	Comments	0.00 0.00
1	Very unsatisfactory - No dedicated active playground								
2	Unsatisfactory - Too small, poor condition, no shade provided								
3	Average - Adequate size, adequate condition, needs some renovations or updates to function well, 50% or less shade coverage over play structure								
4	Satisfactory - Good size, good condition, more than 50% shade coverage over play structure								
5	Very satisfactory - Generous size, excellent condition, full shade coverage over play structure								
N/A	Does not apply								

2 - Outdoor Learning and Activity (cont)		1	2	3	4	5	N/A				
2.3	Are gardens and support spaces appropriately configured per the ed spec? (evaluation on infrastructure not condition of plants)		2						Comments	0.00	<b>0.00</b>
1	Very unsatisfactory - No dedicated gardens							Monitoring answer, does not affect score for Outdoor Learning and Activity. The campus has used many of the courtyards to support the gardens, but maintenance has been a struggle.			
2	Unsatisfactory - Too small, poor condition, disconnected from learning spaces, no flexibility, no accessible water source										
3	Average - Adequate size, adequate condition, needs some renovations or updates to function well, water source is difficult to access										
4	Satisfactory - Good size, good condition, connected to learning spaces, good flexibility, water source is accessible with 100 ft hose										
5	Very Satisfactory - Generous size, excellent condition, connected to learning spaces, excellent flexibility, water source is less than 50ft from the garden or has irrigation										
N/A	Does not apply										
2.4	Are the rain gardens and/or cisterns appropriately configured per the ed spec?	1							Comments	0.00	<b>0.00</b>
1	Very unsatisfactory - No rain gardens or cisterns							Monitoring answer, does not affect score for Outdoor Learning and Activity.  None seen during tour			
2	Unsatisfactory - Too small, poor condition, not functioning, disconnected										
3	Average - Adequate size, adequate condition, is connected, needs some renovations or updates to function well										
4	Satisfactory - Good size, good condition, functions properly										
5	Very Satisfactory - Generous size, excellent condition, exceptional functionality, connected to learning spaces, educational signage provided										
N/A	Does not apply										
2.5	Does the school have animal husbandry? (optional)	1							Comments	0.00	<b>0.00</b>
1	No										
5	Yes										
2.6	Does the school have nature loop trails? (optional)	1							Comments	0.00	<b>0.00</b>
1	No										
5	Yes										
2.7	Does the school have a learning pond? (optional)	1							Comments	0.00	<b>0.00</b>
1	No										
5	Yes										
2.8	Does the school have a grass play field and walking trail?					5			Comments	1.00	<b>5.00</b>
1	No										
5	Yes										



3 - General Building		1	2	3	4	5	N/A	11.25	49%	
3.1	Are interior circulation routes wide enough to safely and effectively accommodate student movement?				4			Comments	0.50	2.00
1	Very unsatisfactory - Primary circulation is 5'-0" to 6'-0" wide	Main circulation occurs outdoors. Interior corridors are 8 feet wide and dark. Large circulation around outdoor courtyard. In general, circulation routes are wide enough to safely accommodate student movement.								
2	Unsatisfactory - Primary circulation is 6'-0" to 7'-0" wide									
3	Average - Primary circulation is 7'-0" to 8'-0" wide									
4	Satisfactory - Primary circulation is 8'-0"-10'-0" wide									
5	Very satisfactory - Primary circulation is 10'-0"+ wide									
N/A	Does not apply									
3.2	Are community use areas arranged so that the school can allow night functions without full school access?			3				Comments	0.75	2.25
1	Very unsatisfactory - Cafeteria, gym, and library cannot be accessed after hours	The gym and theater have dedicated entries that can be closed off from the rest of the school. The cafeteria can be accessed after-hours, but staff needs to be posted at the exits to prevent visitors from gaining access to the rest of the school. The library is accessed through the central courtyard where the open-air corridors make it difficult to confine visitors.								
2	Unsatisfactory - Only one of the public spaces (Cafeteria, Gym and Library) can be accessed from parking and secured after hours									
3	Average - Only two of the public spaces can be accessed from parking and secured after hours									
4	Satisfactory - All of the public spaces can be accessed from parking and secured from the rest of the building but not individually									
5	Very satisfactory - Cafeteria, gym, and library can be accessed from parking and locked off from rest of campus for night/evening use with their own entrance									
N/A	Does not apply									
3.3	Is there a community room that is a dedicated meeting space outside of school function?	1						Comments	0.75	0.75
1	Very unsatisfactory - No dedicated community room	None provided								
2	Unsatisfactory - Community room but within school function, no access after school hours									
3	Average - Community room, moderate size, but need some renovations or updates to function well									
4	Satisfactory - Community room, good size /layout, meets needs /functions well									
5	Very Satisfactory - Community room, generous size, nice condition, functions appropriately outside of school function									
N/A	Does not apply									
3.4	Does the general appearance of the school convey pride for the students and community?		2					Comments	0.25	0.50
1	Very unsatisfactory - General appearance is poor	Campus looks and feels old, but murals and display areas are common throughout the school. The staff and students care for their facility, but the need for renovations is apparent. Original paint and finishes need updates.								
2	Unsatisfactory - General appearance is aged but ok									
3	Average - General appearance is good									
4	Satisfactory - General appearance shows pride in campus and student works									
5	Very Satisfactory - General appearance shows pride in campus and student works and is welcoming to the community									
N/A	Does not apply									





5 - Environmental Quality		1	2	3	4	5	N/A	25.00	68%	
5.1	How are acoustics in studios in general?					5		Comments	1.00 5.00	
1	Very unsatisfactory - Recognized word/sound from adjacent studio/corridor	Difficult to hear noise from corridor from the studio spaces.								
2	Unsatisfactory - Audible sound from adjacent studio/corridor									
3	Average - Slight sound from outside room									
4	Satisfactory - Walls to deck insulated only white noise from mechanical system									
5	Very satisfactory - Able to hear quiet speaking from across the room									
N/A	Does not apply									
5.2	Is the studio artificial lighting adequate quality?			3				Comments	1.00 3.00	
1	Very unsatisfactory - Sporadic lights work, glare, less than 20 FC									
2	Unsatisfactory - 10-19 FC or serious glare									
3	Average- 20-29 FC minor glare									
4	Satisfactory - 30-39 FC and no glare									
5	Very satisfactory - 40+ FC and no glare									
N/A	Does not apply									
5.3	Is there access to natural light in studios?				4			Comments	1.00 4.00	
1	Very unsatisfactory - No learning spaces have natural light									
2	Unsatisfactory - 1-25% of learning spaces have natural light or windows are too small to let in light									
3	Average - 26-50% of learning spaces have natural light									
4	Satisfactory - 51-75% of learning spaces have natural light									
5	Very satisfactory - 76-100% of learning spaces have natural light									
N/A	Does not apply									
5.4	Is there access to outside views from learning spaces?				4			Comments	1.00 4.00	
1	Very unsatisfactory - No learning spaces have views	Windows are present but they are small. Some do not have borrowed light from corridor and have no view.								
2	Unsatisfactory - 1-25% of learning spaces have views or windows are too small to see out									
3	Average - 26-50% of learning spaces have views									
4	Satisfactory - 51-75% of learning spaces have views									
5	Very satisfactory - 76-100% of learning spaces have views									
N/A	Does not apply									

5 - Environmental Quality (cont.)		1	2	3	4	5	N/A				
5.5	Does the building have odor or pest problems?	1							Comments	1.00	<b>1.00</b>
1	Very unsatisfactory - Evidence of both pests and odors							Sewage odor in boys' locker room area. The school administration reports that rodent issues are common. Mosquitos and wasps make outdoor learning areas difficult to use.  School notes odor in the 220s area, the band hall, the boys locker room, and outside by the PAC in the spring.			
2	Unsatisfactory - Evidence of pests or odors										
3	Average - Limited evidence of pests, no odors										
4	Satisfactory - No evidence of pests / odors, school cleanliness in good condition										
5	Very Satisfactory - No evidence, school cleanliness in excellent condition										
N/A	Does not apply										
6 - Controllability of Systems		1	2	3	4	5	N/A			12.50	<b>28%</b>
6.1	Does the studio thermostat allow for individual control?	1							Comments	0.50	<b>0.50</b>
1	No							Shared between several studios and does not always work.			
5	Yes										
6.2	Are shades provided to control natural light in learning spaces?		2						Comments	1.00	<b>2.00</b>
1	Very unsatisfactory - No, windows are covered with boards/paper							Some studios have blinds.			
2	Unsatisfactory - No, windows have no light control										
3	Average - Yes, but poor condition blinds										
4	Satisfactory - Yes, blinds										
5	Very satisfactory - Blackout shades										
N/A	Does not apply										
6.3	What is the quality of lighting controls in the studios?	1							Comments	1.00	<b>1.00</b>
1	Very unsatisfactory - Single switch only per room							Single switch			
2	Unsatisfactory - Alternating rows switch off										
3	Average - Alternating lamps in single fixtures switch off										
4	Satisfactory - Tri level switching										
5	Very satisfactory - Dimmable										
N/A	Does not apply										



7 - Furniture, Fixtures & Equipment		1	2	3	4	5	N/A	18.75	49%	
7.1	What is the current condition of the furniture?			3				Comments	0.75 <b>2.25</b>	
1	Very unsatisfactory - Damaged or broken, non-functioning							Furniture is largely old and in moderate to poor condition.		
2	Unsatisfactory - Torn/ bent/ wrong size									
3	Average - Scratched/dented/marked									
4	Satisfactory - Not new, but sturdy and clean									
5	Very satisfactory - New									
N/A	Does not apply									
7.2	Are a variety of furniture types being accommodated throughout the school - learning commons, dining commons, other multi-use spaces?			3				Comments	1.00 <b>3.00</b>	
1	Very Unsatisfactory - Same furniture used in all spaces							Library and cafeteria have a variety of seating options. Both areas could be improved with more informal seating that could be reconfigured. The building has many areas that could function as common and social spaces if seating is provided.		
2	Unsatisfactory - Furniture variety in one multi-use space									
3	Average - Furniture variety in more than one multi-use space									
4	Satisfactory - All multi-use spaces have greater than one type of furniture									
5	Very satisfactory - All multi-use spaces have greater than two types of furniture									
N/A	Does not apply									
7.3	How well does furniture accommodate rapid reconfiguration of a space?		2					Comments	1.00 <b>2.00</b>	
1	Very Unsatisfactory - Furniture is fixed or very heavy							Furniture is mixed across the school. Many rooms have desks with attached chairs that limit flexibility.		
2	Unsatisfactory - Furniture does not allow desks to be configured as individuals, small groups, or large groups									
3	Average - Mix of furniture that can reconfigure but is cumbersome to move									
4	Satisfactory - Furniture is flexible for multiple configurations of space									
5	Very satisfactory - Furniture is flexible for multiple configurations of space, easy to move and stack									
N/A	Does not apply									
7.4	Is the furniture ergonomic and size appropriate for grade level?		2					Comments	1.00 <b>2.00</b>	
1	Very unsatisfactory - Desk with attached chair combinations too small for grade level							Furniture is mixed across the school. Many rooms have desks with attached chairs that limit flexibility.		
2	Unsatisfactory - Desk with attached chair combinations									
3	Average - Mix of studios with tables/loose chairs and desks with fixed seats									
4	Very satisfactory - Tables with loose chairs									
5	Very satisfactory - Tables with loose chairs that allow students to be active									
N/A	Does not apply									

Zero Waste		1	2	3	4	5	N/A	5.00	70%
Do studios and corridors have blue recycle bins with bilingual instructions and/or image sorting instructions?				3				0.50	1.50
1	Very unsatisfactory - There are no recycling and landfill bins and signage are sparse or infrequent, OR there are only landfill bins with no recycling bins.	<p>A score for this category is being recorded, but this category is not calculated in the overall ESA average.</p> <p>Classrooms have recycling bins, but little to no signage is present.</p>							
2	Unsatisfactory - Bins and signage are sparse or infrequent and/or lack clear signage.								
3	Average - 50% of corridors and studios have both a landfill bin and a recycle bin in an accessible location. The containers have clear signage.								
4	Satisfactory - 75% of studios and corridors have a visible landfill and recycle collection containers in an accessible location. The containers have clear signage.								
5	Very satisfactory - All studios / corridors (100%) have visible landfill and recycle collection containers in accessible locations. The containers have clear signage, and the style and format is consistent and uniform across campus.								
N/A	Does not apply								
Does the cafeteria (or wherever meals are served) have at least one of each: green compost bin, blue recycle bin, and landfill bin? Are the bins labelled clearly with bilingual and/or image sorting?					4			0.50	2.00
1	Very unsatisfactory- There may be landfill bins, but there are no compost and/or recycle bins. There is not clear sorting signage.	<p>Difficult to tell because cafeteria was not serving lunch at time of tour. Bins for recycling, compost and landfill were present during assessment.</p>							
2	Unsatisfactory- Recycle, landfill, and compost bins are present, but the bins are scattered and no co-located next to one another. Signage is absent or inconsistent.								
3	Average- There is at least one waste station with all three bins (recycle, compost, landfill) located with close proximity to one another. The signage is visible and consistent.								
4	Satisfactory- There are several waste stations as described above								
5	Very Satisfactory - There are several waste stations as described above, and additional signage in the cafeteria that encourages recycling/composting.								
N/A	Does not apply								



**Austin ISD Educational Suitability Assessment Criteria**

**Academics - Middle School / High School**

**School Name**

Crockett Early College High School

**Walk Attendees:**

Koleman Uresti, Kevin Kinsey

**Date:**

1/28/2021

<b>8 - Academics &amp; Learning</b>		1	2	3	4	5	N/A	65.00	55%	
8.1	Are studios appropriately configured per the ed spec?			3				Comments	1.00 <b>3.00</b>	
1	Very unsatisfactory - Too small, no flexibility, disconnected							Adequate size, limited flexibility and no breakout spaces. Existing studio spaces do not meet the new Ed Spec.		
2	Unsatisfactory - Too small, only one area for all teaching methods, limited flexibility, disconnected									
3	Neutral - Adequate size, multiple areas for different teaching methods, adequate flexibility, limited transparency and connection to other studios and shared learning spaces, needs updates or renovations to function well.									
4	Satisfactory - Good size, multiple areas for different teaching methods, good flexibility, good transparency and connection to other studios and shared learning spaces									
5	Very Satisfactory - Generous size, multiple areas for different teaching methods, excellent flexibility, generous display area and visual teaching tools, excellent transparency and connection with other studios and shared learning spaces									
N/A	Does not apply									
8.2	Do studios have appropriate support spaces such as storage per the ed spec?	1						Comments	1.00 <b>1.00</b>	
1	Very unsatisfactory - None provided							No storage in the typical studios. Most pods have separate teacher office and storage, but none in studio space.		
2	Unsatisfactory - Too small, disconnected, poor condition									
3	Neutral - Adequate size, average condition, needs updates or renovations to function well									
4	Satisfactory - Good size, connected, good condition									
5	Very Satisfactory - Generous size, connected, excellent condition									
N/A	Does not apply									



8 - Academics & Learning (cont.)		1	2	3	4	5	N/A			
8.3	Do typical learning neighborhoods have small and medium (high school only) group rooms and open collaboration space?		2					Comments	1.00 <b>2.00</b>	
1	Very unsatisfactory - No breakout rooms or open collaboration spaces are provided							Typical learning neighborhoods have large teacher workroom area in center. If renovated, this could provide ideal breakout space for students.		
2	Unsatisfactory - Too small or too few, poor condition, no flexibility, lacks visual connection to learning neighborhood, poor acoustic privacy									
3	Average - Adequate size, adequate condition, needs some renovations or updates to function well									
4	Satisfactory - Good size, good condition and flexibility, transparency and connection to learning neighborhood, acoustic privacy									
5	Very Satisfactory - Generous size, excellent condition and flexibility, transparency and connection to learning neighborhood, acoustic privacy									
N/A	Does not apply									
8.4	Are Science Labs and support spaces appropriately configured per the ed spec?			3				Comments	1.00 <b>3.00</b>	
1	Very unsatisfactory - No dedicated science room							Science rooms are well sized, but not directly connected to support and prep spaces. Furniture and storage in good condition, but some science studios have built-in islands that limit flexibility. Existing science labs do not meet new Ed Spec square foot requirements. Covers over the gas lines are broken and need ot be fixed for safety reasons.		
2	Unsatisfactory - Too small, poor condition, no connected support space									
3	Average - Adequate size, adequate condition, needs some renovations or updates to function well									
4	Satisfactory - Good size, good condition, connected support spaces									
5	Very Satisfactory - Generous size, excellent condition, connected support spaces									
N/A	Does not apply									
8.5	Are Maker Spaces and support spaces appropriately configured per the ed spec? (cross reference with CTE below)	1						Comments	1.00 <b>1.00</b>	
1	Very unsatisfactory - No dedicated maker spaces							None provided. School has new construction and manufacturing building, but no 3D printing or laser cutters.		
2	Unsatisfactory - Too small, poor condition, disconnected from learning spaces, no flexibility									
3	Average - Adequate size, adequate condition, needs some renovations or updates to function well									
4	Satisfactory - Good size, good condition, connected to learning spaces									
5	Very Satisfactory - Generous size, excellent condition, connected to learning spaces									
N/A	Does not apply									

8 - Academics & Learning (cont.)		1	2	3	4	5	N/A			
8.6	Is there a Professional Learning Center in the learning neighborhood?				4			Comments	1.00 <b>4.00</b>	
1	Very unsatisfactory - No dedicated space for Professional Learning Center							Most classroom pods have a teacher work area at the center but due to lighting and old attached furniture, PLCs are typically held in classrooms.		
2	Unsatisfactory - Too small, poor condition, disconnected									
3	Average - Adequate size, adequate condition, needs some renovations or updates to function well									
4	Satisfactory - Good size, good condition, connected									
5	Very Satisfactory - Generous size, excellent condition, connected									
8.7	Are there adequate places to display the evidence and artifacts of learning (both 2D and 3D)?			3				Comments	1.00 <b>3.00</b>	
1	Very unsatisfactory - No dedicated space							Numerous display areas throughout school. Murals are present in science wings, fine arts, and athletics. Display cases are broken and missing doors and without necessary keys or locks needed to secure it.		
2	Unsatisfactory - Too small, non-dedicated, poor condition									
3	Average - Adequate size, adequate condition, needs updates or renovations to function well									
4	Satisfactory - Good size, good condition									
5	Very Satisfactory - Generous size, excellent condition									
N/A	Does not apply									
8.8	Does the building / learning neighborhood provide adequate opportunities for students/teachers to collaborate in varying group sizes?		2					Comments	1.00 <b>2.00</b>	
1	Very unsatisfactory - No space to support collaboration in various sizes.							Currently no opportunities, but could be there with renovations.		
2	Unsatisfactory - Too small, inflexible, only one option, does not support a variety of group sizes									
3	Average - Adequate space for collaboration, needs updates or renovations to function well.									
4	Satisfactory - Good size, good condition, multiple options to support a variety of group sizes									
5	Very Satisfactory - Generous size, excellent condition, multiple options to support a variety of group sizes									
N/A	Does not apply									
8.9	Does the building provide opportunities for informal interaction?			3				Comments	1.00 <b>3.00</b>	
1	Very unsatisfactory - No space							School built around series of courtyards. Inside breakout areas could function very well with better informal seating.		
2	Unsatisfactory - Too small, poor condition, layout and furnishings do not support informal interaction well									
3	Average - Adequate size and condition, needs updates or renovations to function well.									
4	Satisfactory - Good size, good condition, layout and furnishings support informal interactions									
5	Very Satisfactory - Generous size, excellent condition, layout and furnishings support informal interactions									
N/A	Does not apply									

8 - Academics & Learning (cont.)		1	2	3	4	5	N/A			
8.10	Does the building provide adequate opportunities for students to work independently?		2					Comments	1.00 <b>2.00</b>	
1	Very unsatisfactory - No breakout rooms/small study spaces							Some small areas could be used as breakout spaces if furniture was present.		
2	Unsatisfactory - Too small, poor condition, no acoustic privacy, only one space for independent work, disconnected from learning neighborhood									
3	Average - Adequate size and condition, needs updates or renovations to function well.									
4	Satisfactory - Good size and condition, acoustic privacy, variety of independent work space options, connected to learning neighborhood									
5	Very Satisfactory - Generous size, excellent condition, acoustic privacy, variety of independent work space options, connected to learning neighborhood									
N/A	Does not apply									
<b>Special Education</b>										
8.11	Are Special Education spaces appropriately configured per the ed spec?				4			Comments	1.00 <b>4.00</b>	
1	Very unsatisfactory - Too small, no flexibility, disconnected							3 large rooms. 2 rooms share accessible restrooms and changing area. Gives good flexibility. Direct outdoor access to bus pickup.  One room has a ramp that impacts space and wheelchair mobility.		
2	Unsatisfactory - Too small, only one area for all teaching methods, limited flexibility, disconnected									
3	Neutral - Adequate size, multiple areas for different teaching methods, adequate flexibility, limited transparency and connection to other studios and shared learning spaces, needs updates or renovations to function well.									
4	Satisfactory - Good size, multiple areas for different teaching methods, good flexibility, good transparency and connection to other studios and shared learning spaces									
5	Very Satisfactory - Generous size, multiple areas for different teaching methods, excellent flexibility, generous display area and visual teaching tools, excellent transparency and connection with other studios and shared learning spaces									
N/A	Does not apply									
8.12	Are Special Education support spaces, such as storage, space for washer/dryer, appropriately configured per the ed spec?			3				Comments	1.00 <b>3.00</b>	
1	Very unsatisfactory - None provided							Life skills support equipment is present, but handicap access it not easily accessible, due to ramps and floor level changes.		
2	Unsatisfactory - Too small, disconnected, poor condition									
3	Neutral - Adequate size, average condition, needs updates or renovations to function well									
4	Satisfactory - Good size, connected, good condition									
5	Very Satisfactory - Generous size, connected, excellent condition									
N/A	Does not apply									



8 - Academics & Learning (cont.)		1	2	3	4	5	N/A				
8.13	Are Accessible restrooms and changing rooms readily available to the Special Education spaces?					5		Comments	1.00	<b>5.00</b>	
	1 No 5 Yes							2 accessible restrooms and attached changing area and shower			
<b>STEAM Center</b>											
8.14	Does the campus have space to support a "STEAM" center?	1						Comments	0.00	<b>0.00</b>	
	1 Very unsatisfactory - No available space for STEAM center and inadequate studio / collaborative space 2 Unsatisfactory - Collaborative areas / studios for CTE/CCL are completely separate but adequate size 3 Neutral - Collaborative areas / studios for CTE/CCL are adjacent but function separately 4 Satisfactory - Collaborative areas / studios for CTE/CCL function and have space availability to create STEAM center 5 Very Satisfactory - Functioning STEAM center offers studios, labs, common collaborative areas to support multimedia distance and hands-on project based learning N/A Does not apply							Monitoring answer, but does not count toward overall score			
<b>9 - CTE and Career Connected Learning</b>									25.00	<b>72%</b>	
9.1	How close is your campus to a CTE cluster pathway that is aligned with your CTE programs (Middle School only)?							Comments	1.00	<b>0.00</b>	
	1 Very unsatisfactory - No correlation to CTE cluster pathway, no CTE programs. 2 Unsatisfactory - School supports less than half of the CTE programs that are listed in the cluster pathway. 3 Average - School support half of CTE programs listed in the cluster pathway, but missing some. 4 Satisfactory - School support a majority of CTE programs listed in the CTE cluster pathway. 5 Very Satisfactory - School is aligned with CTE cluster pathway. N/A Does not apply										
9.2	Do campus facilities align with the CTE Ed Spec Requirements for the current pathways offered?: Architecture and Construction					5			0.25	<b>1.25</b>	
	1 No 5 Yes N/A Does not apply							Per interview: Construction technology needs mortar / plaster mixer, disc sander, stroage, cabinet table saw. Needs secure concrete pad outside close to building.			
9.3	Arts, Audio and Video Technology and Communications					5			0.25	<b>1.25</b>	
9.4	Business, Management and Administration					5			0.25	<b>1.25</b>	
9.5	Education and Training	1							0.25	<b>0.25</b>	
9.6	Health Science					5			0.25	<b>1.25</b>	

9 - CTE and Career Connected Learning (cont.)		1	2	3	4	5	N/A			
9.7	Hospitality and Tourism					5			0.25 <b>1.25</b>	
9.8	Human Services (high school only)					5		Cosmetology	0.25 <b>1.25</b>	
9.9	Information Technology					5			0.25 <b>1.25</b>	
9.10	Agriculture, Food and Natural Resources					5			0.25 <b>1.25</b>	
9.11	Science, Technology, Engineering, and Mathematics					5			0.25 <b>1.25</b>	
9.12	Transportation, Distribution and Logistics					5			0.25 <b>1.25</b>	
9.13	Finance (high school only)					5			0.25 <b>1.25</b>	
9.14	Government and Public Administration / JROTC Military programs (high school only)					5			0.25 <b>1.25</b>	
9.15	Law, Public Safety, Corrections and Security (high school only)					5			0.25 <b>1.25</b>	
9.16	Manufacturing (high school only)	1							0.25 <b>0.25</b>	
9.17	Marketing, Sales and Services (high school only)					5			0.25 <b>1.25</b>	
<b>10 - Visual and Performing Arts</b>									<b>35.00 63%</b>	
10.1	Is there flexibility of space to also be used by CTE and Athletics?	1						Comments	0.00 <b>0.00</b>	
	1 No 5 Yes								Monitoring answer, but doesn't affect overall score.	
10.2	Are band and support spaces (rehearsal and storage) appropriately configured per the ed spec?		2					Comments	1.00 <b>2.00</b>	
	1 Very unsatisfactory - Too small, missing program spaces 2 Unsatisfactory - Too small, poor condition 3 Neutral - Adequate size, adequate condition, needs updates or renovations to function well. 4 Satisfactory - Good size, good condition 5 Very Satisfactory - Generous size, excellent condition N/A Does not apply								Orchestra and band share 4 small practice rooms. Lack additional large rehearsal space. Storage is inadequate and additional rooms (sometimes far from band hall) are being used for storage. Instrument storage occurs along walls of band hall. Percussion storage happens in typical studio.	
10.3	Are orchestra and support spaces appropriately configured per the ed spec?			3				Comments	1.00 <b>3.00</b>	
	1 Very unsatisfactory - Too small, missing program spaces 2 Unsatisfactory - Too small, poor condition 3 Neutral - Adequate size, adequate condition, needs updates or renovations to function well. 4 Satisfactory - Good size, good condition 5 Very Satisfactory - Generous size, excellent condition N/A Does not apply								Orchestra room is adequate size; storage is lacking. Orchestra and band share a wall, which creates sound issues.	

10 - Visual and Performing Arts (cont.)		1	2	3	4	5	N/A		
10.4	Are choir and support spaces appropriately configured per the ed spec?		2					Comments	1.00 <b>2.00</b>
	1 Very unsatisfactory - Too small, missing program spaces 2 Unsatisfactory - Too small, poor condition 3 Neutral - Adequate size, adequate condition, needs updates or renovations to function well. 4 Satisfactory - Good size, good condition 5 Very Satisfactory - Generous size, excellent condition N/A Does not apply							Permanent risers limit flexibility and steps are not tall enough to make a difference. Storage attached. 2 rehearsal rooms attached.	
10.5	Are dance and support spaces appropriately configured per the ed spec?			3				Comments	1.00 <b>3.00</b>
	1 Very unsatisfactory - Too small, missing program spaces 2 Unsatisfactory - Too small, poor condition 3 Neutral - Adequate size, adequate condition, needs updates or renovations to function well. 4 Satisfactory - Good size, good condition 5 Very Satisfactory - Generous size, excellent condition N/A Does not apply							Dance has very limited storage space. Room is undersized. Dance changing room is attached. Plastic flooring is in moderate condition.	
10.6	Are theater and support spaces appropriately configured per the ed spec?			3				Comments	1.00 <b>3.00</b>
	1 Very unsatisfactory - Too small, missing program spaces 2 Unsatisfactory - Too small, poor condition 3 Neutral - Adequate size, adequate condition, needs updates or renovations to function well. 4 Satisfactory - Good size, good condition 5 Very Satisfactory - Generous size, excellent condition N/A Does not apply							Theater is sometimes sold out. Seating in poor condition. Small scene shop. Former black box theater used as theater classroom. Small dressing rooms on both sides of stage. Stage is well-sized with flyloft. Ticket booth outside. New curtains are requested by school to meet fire safety requirements.	
10.7	Are visual arts and support spaces appropriately configured per the ed spec?				4			Comments	1.00 <b>4.00</b>
	1 Very unsatisfactory - Too small, missing program spaces 2 Unsatisfactory - Too small, poor condition 3 Neutral - Adequate size, adequate condition, needs updates or renovations to function well. 4 Satisfactory - Good size, good condition 5 Very Satisfactory - Generous size, excellent condition N/A Does not apply							3 art classrooms. Room on level 01 is large but no kiln attached.	
10.8	Does the campus have adequate space for the specialty arts programs (Ensemble, Guitar, Music studies, Music theory and Piano)?					5		Comments	1.00 <b>5.00</b>
	1 No 5 Yes							Crockett offers Ensemble, Mariachi, Piano, Music Theory and Guitar.	

11 - Athletics and Wellness						26.25	50%
11.1	Does the campus meet ed spec standard for physical education program spaces?		2			Comments	1.00 <b>2.00</b>
1	Very unsatisfactory - Too small, missing program spaces	Girls' PE and athletics lockers are mixed. No hot water in the locker room. Weight room connected. Weight rooms are small and share space with former gymnastics. Only have small tub in training room but no restroom. No ramp to training. Want a wet room. Laundry room isolated in makeshift space with storage space attached. Boys' side has PE lockers separated from athletics lockers. No visiting locker room. Wrestling room doesn't fit the mats. Only some hoops can move in main gym. Requested shade in outside athletic area.					
2	Unsatisfactory - Too small, poor condition						
3	Average - Adequate size, adequate condition, needs some renovations or updates to function well						
4	Satisfactory - Good size, good condition						
5	Very Satisfactory - Generous size, excellent condition						
N/A	Does not apply						
11.2	Does the campus have a dedicated wellness center?	1				Comments	0.50 <b>0.50</b>
1	No						
5	Yes						
11.3	Does the community have access to exterior playfields/courts?			5		Comments	0.50 <b>2.50</b>
1	No						
5	Yes						
11.4	Are facilities available to facilitate eSports (High School only)?	1				Comments	0.00 <b>0.00</b>
1	No	Monitoring answer, but doesn't affect overall score.					
5	Yes						
11.5	Are facilities set up to support UIL sanctioned athletics for basketball?			5		Comments	0.25 <b>1.25</b>
1	No						
5	Yes						
11.6	Are facilities set up to support UIL sanctioned athletics for track?	1				Comments	0.25 <b>0.25</b>
1	No	Supports practice but no seating, no lighting, track is not a full 8 lane track.					
5	Yes						
11.7	Are facilities set up to support UIL sanctioned athletics for football?	1				Comments	0.25 <b>0.25</b>
1	No	Supports practice, but no seating, no lighting.					
5	Yes						
11.8	Are facilities set up to support UIL sanctioned athletics for volleyball?			5		Comments	0.25 <b>1.25</b>
1	No						
5	Yes						
11.9	Are facilities set up to support UIL sanctioned athletics for tennis?			5		Comments	0.25 <b>1.25</b>
1	No						
5	Yes						
11.10	Are facilities set up to support UIL sanctioned athletics for soccer?	1				Comments	0.25 <b>0.25</b>
1	No	Supports practice, but no seating, no lighting.					
5	Yes						



11 - Athletics and Wellness (cont.)		1	2	3	4	5	N/A		
11.11	Are facilities (dedicated storage) set up to support UIL sanctioned athletics for cross-country (high school only)?	1						Comments	0.25 <b>0.25</b>
	1 No 5 Yes								
11.12	Are facilities (dedicated storage) set up to support UIL sanctioned athletics for golf (high school only)?	1						Comments	0.25 <b>0.25</b>
	1 No 5 Yes							School requested large net for practice on outside wall.	
11.13	Are facilities (dedicated storage) set up to support UIL sanctioned athletics for swimming (high school only)?	1						Comments	0.25 <b>0.25</b>
	1 No 5 Yes								
11.14	Are facilities set up to support UIL sanctioned athletics for wrestling (high school only)?					5		Comments	0.25 <b>1.25</b>
	1 No 5 Yes								
11.15	Are facilities set up to support UIL sanctioned athletics for baseball (high school only)?	1						Comments	0.25 <b>0.25</b>
	1 No 5 Yes							Field in good condition but no lights	
11.16	Are facilities set up to support UIL sanctioned athletics for softball (high school only)?	1						Comments	0.25 <b>0.25</b>
	1 No 5 Yes							Field in good condition but no lights	
11.17	Are facilities (dedicated space outside of the gymnasium) available to support competitive spirit activities for cheerleading and drill team?					5		Comments	0.25 <b>1.25</b>
	1 No 5 Yes								
11 - Athletics and Wellness (cont.)		1	2	3	4	5	N/A		
11.18	How do the athletics fields align with FMP Campus Improvements? Turf Field, Parking lot lighting, ADA accessible amenities (high School only)	1						Comments	0.00 <b>0.00</b>
	1 Very unsatisfactory - No turf, inaccessible, no site lighting 2 Unsatisfactory - No turf/field in poor condition, some accessibility concerns, poor site lighting 3 Average - Field in adequate condition, needs some updates or renovations to function well 4 Satisfactory - Turf field in good condition, good ADA access and site lighting 5 Very Satisfactory - Turf field with excellent maintenance, excellent ADA access for spectators and athletes, excellent site lighting N/A Does not apply.							Monitoring answer, but doesn't affect overall score. No turf field, no lighting, limited accessibility.	

12 - Food Services										10.00	80%	
12.1	Is the Dining Commons appropriately configured per the ed spec?				4					Comments	1.00	4.00
1	Very unsatisfactory - Too small, missing program spaces	Natural light, multiple seating types. Opens onto outdoor seating area but lacks security.										
2	Unsatisfactory - Too small, poor condition, only one option for eating space provided, inadequate circulation											
3	Average - Adequate size and condition, needs updates or renovations to function well											
4	Satisfactory - Good size and condition, good circulation, multiple options for eating space (ex: connection to outdoor eating space)											
5	Very Satisfactory - Generous size, excellent condition and circulation, multiple options for eating space (ex: connection to outdoor eating space)											
N/A	Does not apply											
12.2	Are the Food Services support spaces appropriately configured per the ed spec?				4					Comments	1.00	4.00
1	Very unsatisfactory - None provided	Support spaces are adequately sized with attached office and restroom. Two pickup lines for students.										
2	Unsatisfactory - Too small, disconnected, poor condition											
3	Neutral - Adequate size, average condition, needs updates or renovations to function well											
4	Satisfactory - Good size, connected, good condition											
5	Very Satisfactory - Generous size, connected, excellent condition											
N/A	Does not apply											
13 - Media Resources										30.00	80%	
13.1	Is the Library/Media Center easily accessible for the occupants and visitors to the school?				4					Comments	1.00	4.00
1	Very unsatisfactory - Not accessible	Library opens onto main courtyard of school.										
2	Unsatisfactory - Limited access, difficult to find, no transparency											
3	Average - Adequate accessibility, needs updates or renovations to function well											
4	Satisfactory - Accessible, easy to find, good transparency, good condition											
5	Very Satisfactory - Accessible, easy to find, excellent transparency, excellent condition											
N/A	Does not apply											

13 - Media Resources - Continued		1	2	3	4	5	N/A			
13.2	How well does the Library/Media Center support quiet study?					5		Comments	1.00 <b>5.00</b>	
1	Very unsatisfactory - No quiet study spaces							Small breakout rooms attached		
2	Unsatisfactory - One area in poor condition, poor acoustic privacy									
3	Average - One or more areas provided, needing updates or renovations to function well									
4	Satisfactory - Clusters or small rooms adjacent to media center, good condition, good acoustic privacy									
5	Very Satisfactory - Multiple clusters or small rooms adjacent to media center, excellent condition, excellent acoustic privacy									
N/A	Does not apply									
13.3	How well does the Library/Media Center support social interaction?			3				Comments	1.00 <b>3.00</b>	
1	Very unsatisfactory - No space							Library is spacious, but no informal seating.		
2	Unsatisfactory - Too small, poor condition, layout and furnishings do not support informal interaction well									
3	Average - Adequate size and condition, needs updates or renovations to function well.									
4	Satisfactory - Good size, good condition, layout and furnishings support informal interactions									
5	Very Satisfactory - Generous size, excellent condition, layout and furnishings support informal interactions									
N/A	Does not apply									
13.4	How well does the Library/Media Center support collaborative work in small groups (4-8 students)?					5		Comments	1.00 <b>5.00</b>	
1	Very unsatisfactory - No breakout rooms, no flexible furniture, no support							Breakout rooms are available with good transparency.		
2	Unsatisfactory - Too small, one area, poor condition									
3	Average - Adequate size, multiple areas provided, needing updates or renovations to function well									
4	Satisfactory - Clusters or small rooms adjacent to media center, flexible furniture, good condition									
5	Very Satisfactory - Multiple clusters or small rooms adjacent to media center, flexible furniture, excellent condition									
N/A	Does not apply									
13.5	How well does the Library/Media Center support collaborative work in larger groups (10-25)?				4			Comments	1.00 <b>4.00</b>	
1	Very unsatisfactory - No gathering areas							Multiple areas that large groups can occupy.		
2	Unsatisfactory - Too small, one common space, limited seating, poor condition									
3	Average - Adequate size, one common space, needs updates or renovations to function well									
4	Satisfactory - Good size, multiple common spaces with seating, good condition									
5	Very Satisfactory - Generous size, multiple commons spaces with seating, excellent condition									
N/A	Does not apply									



<b>13 - Media Resources - Continued</b>		1	2	3	4	5	N/A		
13.6	How well does the Library/Media Center support technology?			3				Comments	1.00 <b>3.00</b>
1	Very unsatisfactory - No vis comm tools							Small projector screens and TV on cart. Several charging towers.	
2	Unsatisfactory - Outdated, poorly functioning, or insufficient								
3	Average - Mix of old and new whiteboards/projectors/etc.								
4	Satisfactory - projectors, marker boards, smart boards in most spaces - good condition								
5	Very Satisfactory - projectors, marker boards, smart boards in most spaces - new condition								
N/A	Does not apply								
<b>14 - Technology</b>		1	2	3	4	5	N/A		20.00 <b>40%</b>
14.1	How well equipped are the facilities with instructional technology?			3				Comments	1.00 <b>3.00</b>
1	Very unsatisfactory - Limited to no technology present in instructional spaces							Studios have flat-screen TVs on mobile carts and digital projectors.	
2	Unsatisfactory - One type of technology present								
3	Average - Multiple types of technology, smart boards. Poor condition. Limited to only certain areas of school.								
4	Satisfactory - Multiple types of technology, smart boards. Good condition.								
5	Very Satisfactory - Multiple types of technology, smart boards. Excellent condition								
N/A	Does not apply								
14.2	Is there an adequate number of power and data outlets in learning spaces?		2					Comments	1.00 <b>2.00</b>
1	Very unsatisfactory - Outlet configuration does not support digital devices throughout school (1 per wall)							Power distribution varies across campus. Generally, the number of outlets is not adequate for today's reliance on technology.	
2	Unsatisfactory - Outlet configuration support digital devices only in certain areas of school (2 per wall)								
3	Average - Outlet configuration support digital devices but limited capacity throughout school (3 per wall)								
4	Satisfactory - Outlet configuration support digital devices with adequate coverage and capacity in limited locations (>3 per wall)								
5	Very Satisfactory - Excellent outlet configuration to support digital devices throughout school (>3 per wall)								
N/A	Does not apply								

14 - Technology (cont.)		1	2	3	4	5	N/A			
14.3	Are there adequate charging locations for devices?		2					Comments	1.00	2.00
1	Very unsatisfactory - Not enough charging locations throughout school for 1:1							No charging towers		
2	Unsatisfactory - Charging locations, haphazard locations, and inadequate in size for number of devices									
3	Average - Charging locations well organized but not enough capacity for 1:1									
4	Satisfactory - Charging locations, haphazard locations, but supports 1:1.									
5	Very Satisfactory - Charging locations throughout school to support 1:1.									
N/A	Does not apply									
14.4	Is there adequate AV for presentations spaces – cafeteria, gym, aux gym?	1						Comments	1.00	1.00
1	Very unsatisfactory - AV not present in one or more space							Gym and Aux Gym do not have working sound system.		
2	Unsatisfactory - AV undersized for room. Poor condition									
3	Average - AV adequately sized / poor condition OR AV undersized / average condition									
4	Satisfactory - AV adequately sized for room. Average Condition.									
5	Very Satisfactory - AV adequately sized for room. Excellent condition.									
N/A	Does not apply									
14.5	Is there digital media signage at the reception area?	1						Comments	0.00	0.00
1	Very unsatisfactory - No digital media present in reception area							No digital media present		
2	Unsatisfactory - Undersized, poor condition									
3	Average - Adequately sized / poor condition OR undersized / adequate condition									
4	Satisfactory - Media signage present, good sized, good condition									
5	Very Satisfactory - Generously sized, excellent condition									
N/A	Does not apply									

15 - Administration Spaces		1	2	3	4	5	N/A	20.00	45%	
15.1	Is there a reception area that functions as a security checkpoint for all visitors?							1.00		
	1 Very unsatisfactory - No security checkpoint 2 Unsatisfactory - Checkpoint is too small, poor condition 3 Average - Needs updates or renovations to function well 4 Satisfactory - Good size, good condition 5 Very Satisfactory - Generous size, excellent condition N/A Does not apply									
15.2	Does the administration area feel welcoming?		2					1.00	2.00	
	1 Very unsatisfactory - No welcome space 2 Unsatisfactory - Too small, poor lighting and transparency, limited informal seating, poor condition 3 Average - Adequate size and layout, needs updates or renovations to feel welcoming 4 Satisfactory - Good size and layout, good lighting and transparency, informal seating provided 5 Very Satisfactory - Generous size and layout, plenty of light and transparency, informal seating provided, excellent condition N/A Does not apply								No natural light. All painted white and furniture is dated and stained.	
15.3	For those spaces that require it, does the administration area have adequate acoustic privacy?			3				1.00	3.00	
	1 Very unsatisfactory - No acoustic separations 2 Unsatisfactory - Acoustic separations do not perform well 3 Average - Some acoustic separations function okay, but portions need updates or renovations 4 Satisfactory - Good acoustic separations 5 Very Satisfactory - Excellent acoustic separations N/A Does not apply								Audible noise in conference room.	
15.4	Are conference rooms easily accessed for public / parent use?			3				1.00	3.00	
	1 Very unsatisfactory - Not accessible for public/parent 2 Unsatisfactory - Limited access, no transparency, poor condition, difficult to find 3 Average - Adequate accessibility, needs updates or renovations to function well 4 Satisfactory - Good accessibility, good transparency, good size and condition 5 Very Satisfactory - Excellent accessibility, excellent transparency, generous size, excellent condition N/A Does not apply								Two conference rooms accessible. No transparency.	