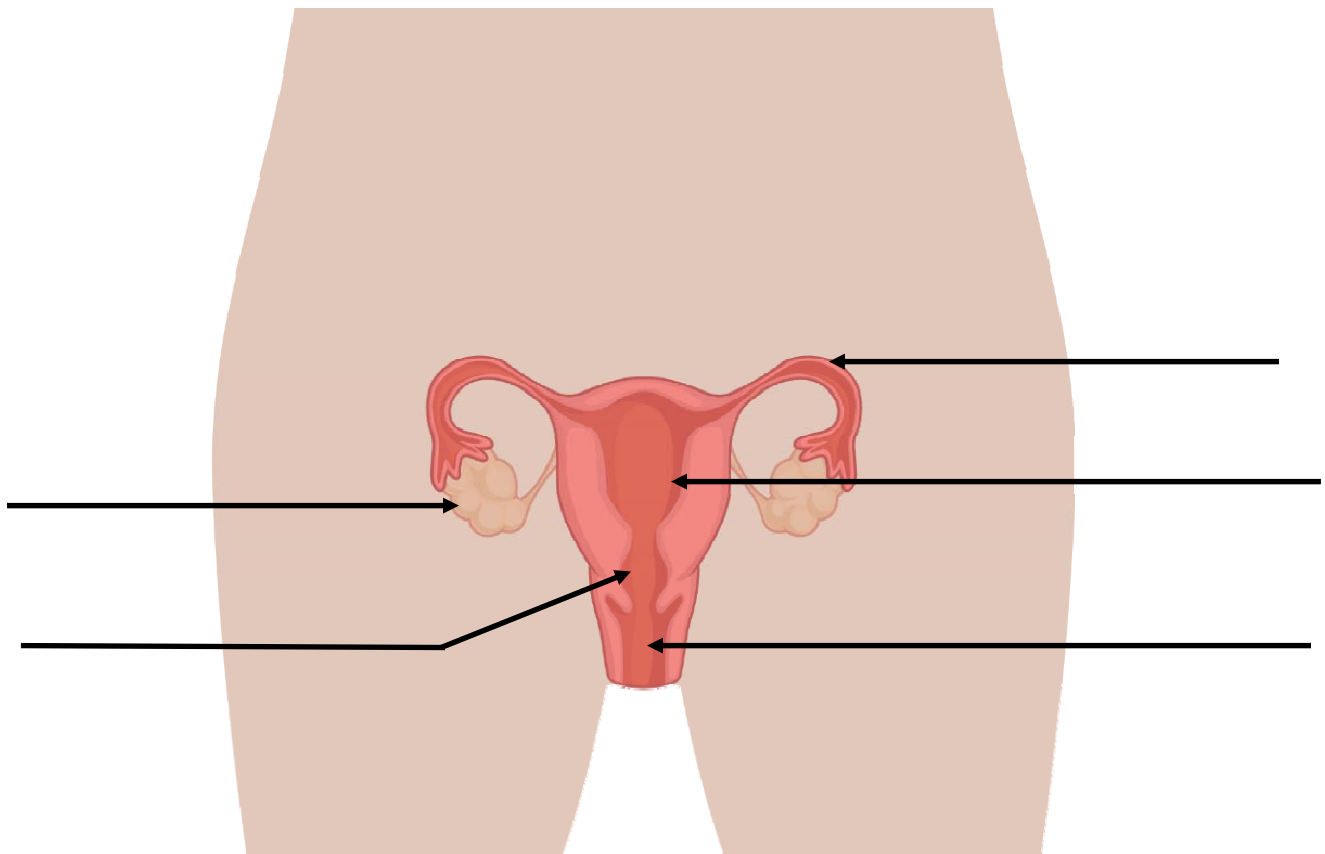
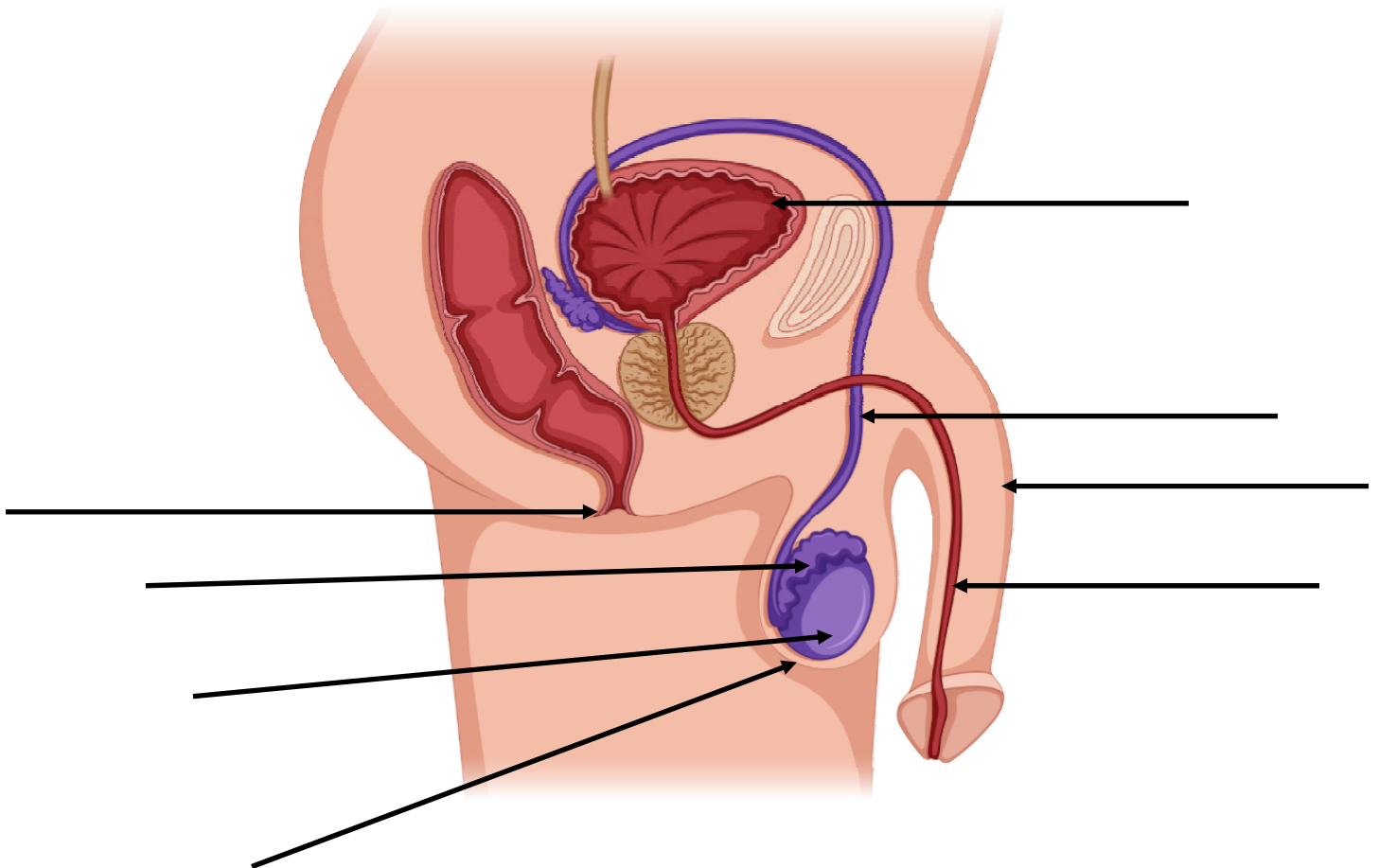


Female Reproductive Anatomy



Male Reproductive Anatomy



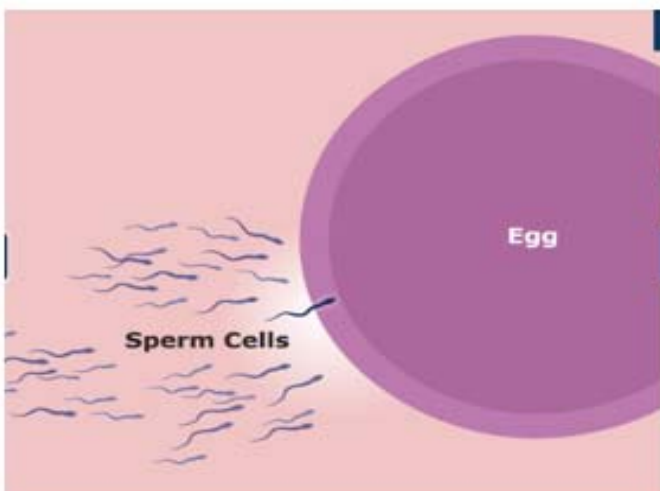
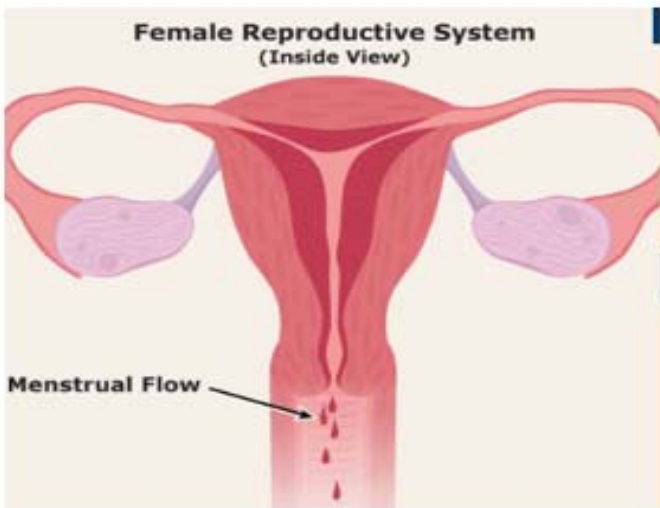
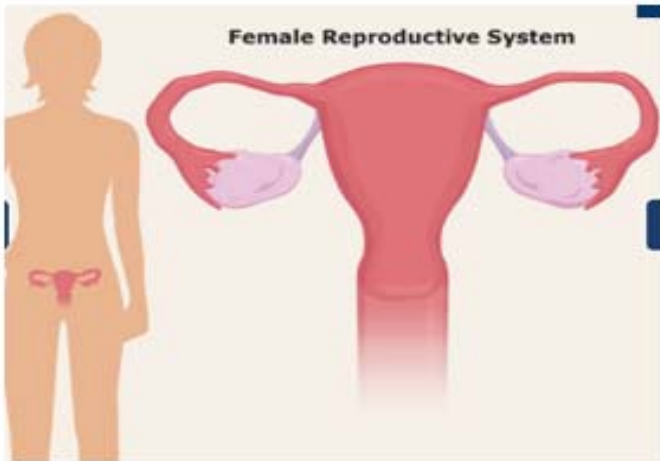
The 2 parts of parts labeled above that are NOT part of the male reproductive system are:
_____ and _____.

From Puberty to Pregnancy to Birth

Name _____

With your table partners, use the numbers 1, 2, 3, 4, 5, 6 to put these pictures in order.

Use the vocabulary page to add one term to each picture.



Pregnancy and Reproduction Vocabulary

Name _____

With your shoulder partner, read the terms and the definitions.

Discuss if the term applies to male, female, or both.

Male? Female? or Both?

_____ Puberty	Process during which adolescents reach reproductive maturity
_____ Testes/testicles	Reproductive organ that produces sperm and hormones
_____ Ovaries	Reproductive organ that produces eggs and hormones
_____ Menstrual cycle	Events involving the development and release of an egg
_____ Fertilization	The process in which a sperm and egg fuse to form a new cell
_____ Sperm	Reproductive cell
_____ Ovaries	Produce eggs
_____ Fallopian tubes	Transports egg to uterus, acts as site of fertilization
_____ Uterus	Supports a developing embryo
_____ Cervix	Allows passage between the uterus and the vagina
_____ Vagina	Acts as birth canal, passes menstrual flow
_____ Breasts	Produce and deliver milk
_____ Testes	Produce sperm and male hormones
_____ Scrotum	Supports testes and regulates their temperature
_____ Vas deferens	Transports sperm
_____ Egg	Reproductive cell
_____ Penis	Transfers sperm into female