

Austin ISD Human Sexuality and Responsibility

Grade Level: 4

Unit: Human Sexuality and Responsibility

Ground Rules

Classroom safety is crucial. Children feel safer and more at ease when they know the ground rules and see that they are enforced. Just as you set rules for your class at the beginning of the school year, we encourage you to set ground rules, or review ground rules at the onset of this curriculum.

Students will describe or identify:

1. Two classroom ground rules;
2. Two ways rules are kept;
3. A parent(s) or trusted adult to talk to about today's lesson.

Teacher Tip: Review "Guidelines for Discussion" to ensure a safe climate for the discussion of sensitive topics. For questions that teachers don't feel comfortable answering, please refer students to talk to a trusted adult.

Use equity practices to solicit responses from all students such as: popsicle sticks, randomizing apps, Think-Pair-Share, talking chips, etc.

LESSON 4: Anatomy and Physiology

LESSON SUMMARY: Anatomy and Physiology. Students learn the foundation for basic human functioning.

NSES

AP.5.CC.1: Describe male and female reproductive systems including body parts and their functions.

LESSON OBJECTIVES

Describe male and female reproductive body parts and their functions.

MATERIALS

Student copies of Male Reproductive Organs, Female Reproductive Organs, Female and Male Reproductive Systems.

VOCABULARY

Reproduction, testicles/testes, sperm, scrotum, penis, epididymis, vas deferens, prostate gland, Cowper's gland, seminal vessels, semen, ovaries, fallopian tubes, uterus, cervix, vagina, labia, clitoris, urethra, anus, bladder.

Teacher note: Definitions of vocabulary terms are included in the body of the lesson.

BEGINNING – Engage (5-10 minutes)

Directions:

Share with students:

Over the next couple of days, we will be discussing our bodies and how they grow and change as we transition from children to young adults. Students should feel good about growing up. Today, we will be reviewing the human reproductive systems of both males and

females. The purpose is to ensure that students have the correct information about their bodies and feel comfortable asking questions of their parents or doctors. In knowing their bodies and having a positive, correct understanding, students will not be as likely to be sexually abused.



Access Discovery Education video from your portal: [Introduction to the Reproductive System](#) (3:16).

MIDDLE: Explore (20-30 minutes)

Activity: Knowing the Reproductive Organs

Directions:

Describe names, purposes, and locations of male and female reproductive organs.

Use the images or, better yet, draw so that you can introduce one part at a time and so that your drawing won't exactly match the worksheets the students are filling out.

Name and explain the functions of the parts of the male reproductive system. Teacher notes (to be read in advance and paraphrased during lesson):

Display the side view of the male:

Let me describe how most people's bodies are made. But know that individual differences are pretty common.

Male reproductive parts are mostly outside of the body. This is a side view of the **male reproductive system**. On the outside he has two parts.

Can anyone name them? That's right, "**penis**" and "**scrotum**."

The scrotum holds the "**testicles**" or "**testes**."

The testes produce **sperm**.

The **sperm** is carried through a tube all the way to the penis. Along the path fluids are added to nourish, protect, and otherwise help the sperm. This combination of fluids is known as **semen**.

The **urethra** is a tube that connects the bladder to the penis. The urethra has two jobs, one as part of the urinary system and one as part of the reproductive system: **urination** (part of the urinary system; eliminates urine from the body) and **ejaculation** (part of reproductive system; releases sperm from the male).

A man has two openings in his private parts, the urethra is one. The other opening from a man's private parts is his anus, where a bowel movement ("poop") comes out (not actually part of the reproductive system).

Display the front view of the female:

Start reviewing:

Most of the female reproductive systems is inside of the body. Let's review the female reproductive system.

Females have two **ovaries** that produce **eggs** and take turns releasing an egg each month during the menstrual cycle.

When an egg leaves an **ovary**, it goes into one of the **fallopian tubes**.

Then the egg travels down to the **uterus**.

If the egg is fertilized, it stays in the uterus for nine months where it develops into a baby. The female does not experience a menstrual cycle during this time.

If the egg is not fertilized, the lining of the uterus is released, along with unfertilized egg, and flows out of the body during the **menstrual cycle**. This is typically called a female's "period."

The bottom of the uterus is the **cervix**. The cervix connects the uterus to the **vagina**, which opens to the outside of the female body.

A female has three openings in her private parts.

In the **front** is the tube that urine ("pee") comes out from. It's called the same thing we called it in the male: the urethra. And of course, it is attached to the place where urine is stored: the bladder. However, unlike in males, the urethra in females is not considered part of the reproductive system.

In the **middle** is the opening that leads from the uterus to the outside of the body--the vagina.

The **back** opening is the opening a bowel movement comes out of. What did we call it in the male? The anus.

END: EVALUATE

Activities about **Anatomy and Physiology** have a purpose that may not be apparent to fourth graders. It is important that you provide closure through questioning skills to assess if your students understand the lesson.

Ask students to define the vocabulary:

Reproduction, testicles/testes, sperm, scrotum, penis, epididymis, vas deferens, prostate gland, Cowper's gland, seminal vessels, semen, ovaries, fallopian tubes, uterus, cervix, vagina, labia, clitoris, urethra, anus, bladder.

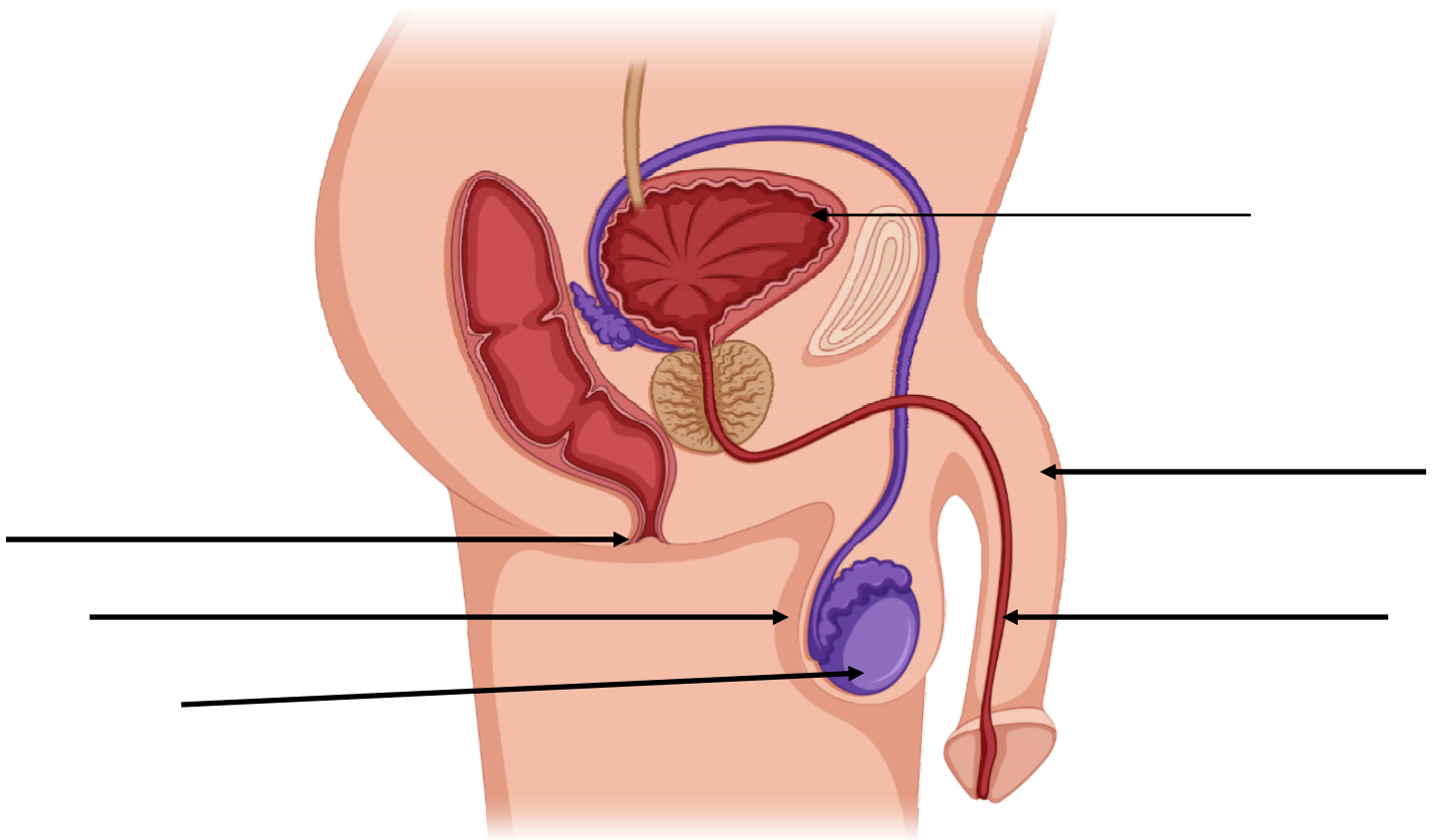
Activity: Female and Male Reproductive Systems

Directions:

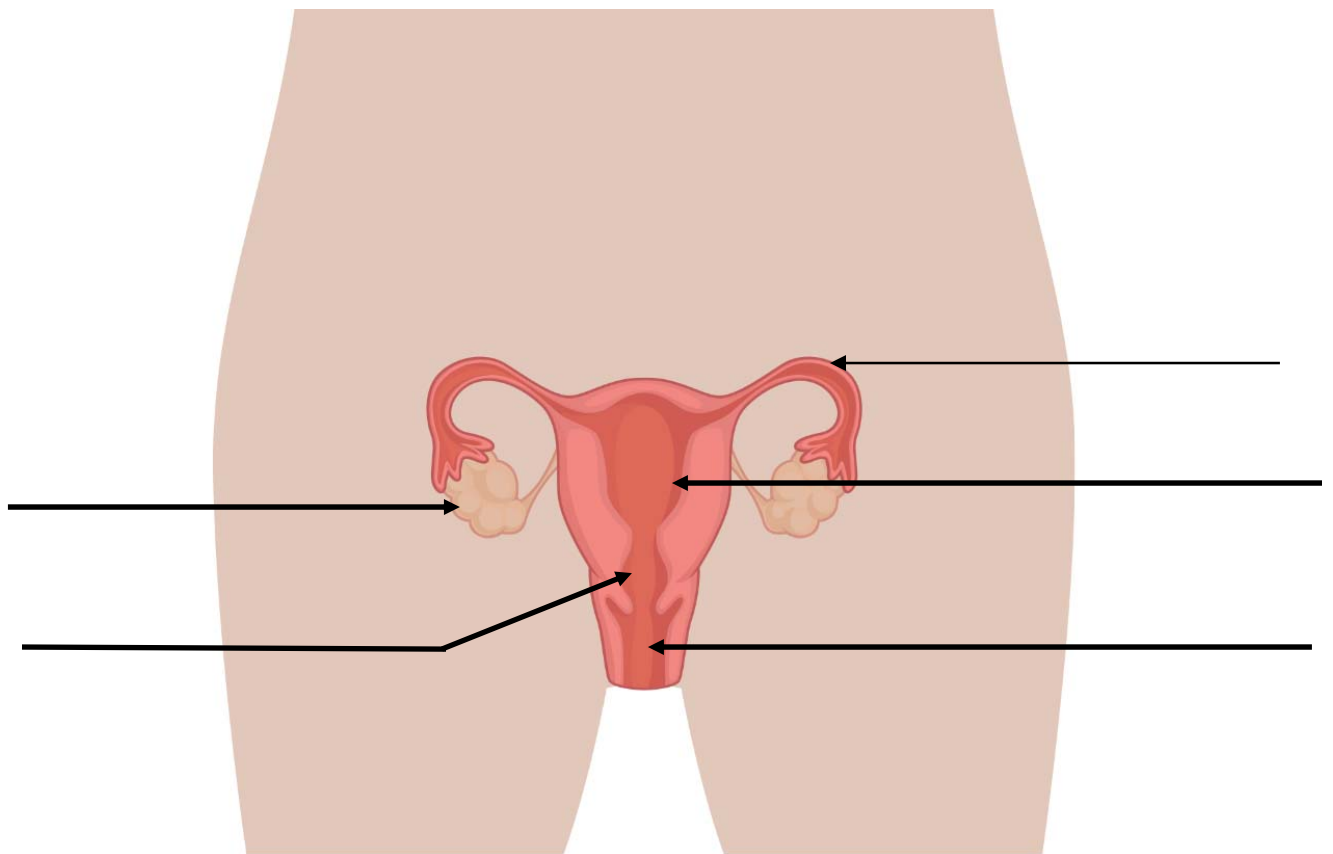
Distribute and have students draw from class discussions to complete a worksheet—Female and Male Reproductive Systems.

NOTE: You may want to have an "Anonymous Question Box" set up for students to submit questions they have about the reproductive system but are embarrassed to ask in class. Prepare responses for the next classes based on the submissions.

Male Reproductive Anatomy



Female Reproductive Anatomy



Female and Male Reproductive Systems

Directions: Mark an “M” next to any part of a male’s (boy or man) part.
Mark an “F” next to any part of a female’s (girl or woman) part.
Mark an “E” if the part could belong to either a male or a female body.

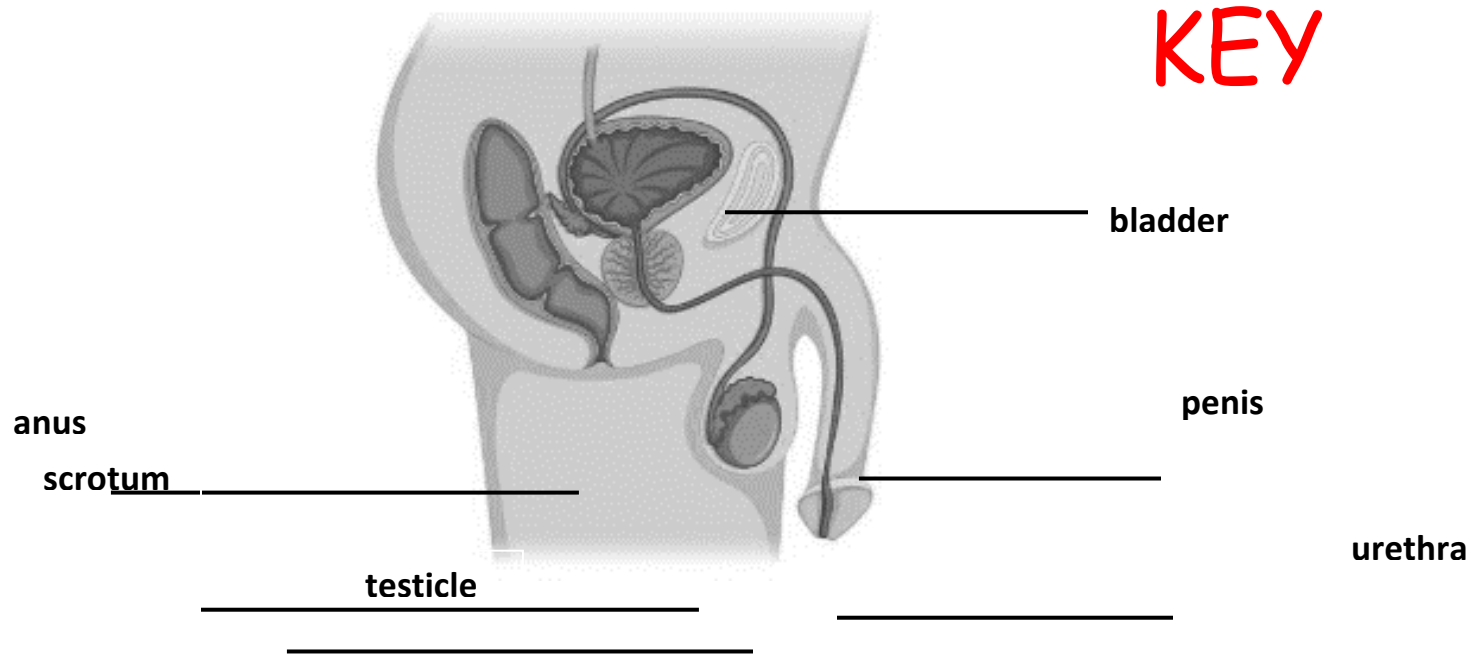
So your choices are “M,” “F,” and “E.”

_____ penis	_____ urethra
_____ vagina	_____ scrotum
_____ fallopian tubes	_____ anus
_____ testicle/testes	_____ ovary
_____ uterus	_____ sperm

DIRECTIONS: Fill in the blanks. Look up each word to make sure you have spelled it correctly.

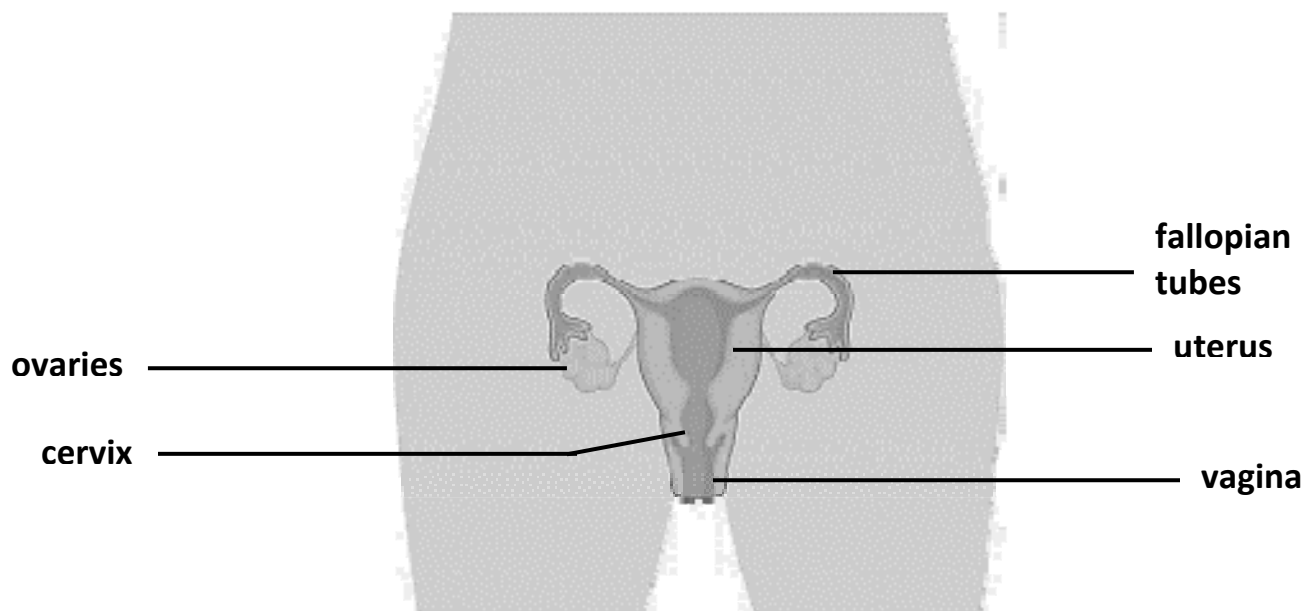
1. The outside parts of the male reproductive system are the penis and the _____.
2. A female has three openings: the _____ in the front, the _____ in the middle, and the _____ in the back.
3. Sperm are made in the _____.
4. Eggs are created in the _____.
5. The opening of the uterus into the vagina is called the _____.
6. Both females and males store urine in the _____ which leaves the body through the urethra.

Male Reproductive Anatomy



Images. "Medical Illustration of the Male Reproductive System and Prostate Gland." 59313983-Stock Vector Illustration and Royalty Free Clipart, 123RF.Com, <https://www.123rf.com/clipart-vector/59313983.html?oriSearch=prostate gland in male human illustration&sti=mfymvb4f2bjjfa81o7|&mediapopup=59313983>.

Female Reproductive Anatomy



Bramantyo, Husni. "Medical Drawing of the Female Reproductive System." 33341446-Stock Illustrations, Cliparts, And Royalty Free , 123RF.Com, <https://www.123rf.com/clipart-vector/33341446.html?oriSearch=59313983&sti=nddjus3ua2d9qfcgzx|>.

Female and Male Reproductive Systems **KEY**

Directions: Mark an “**M**” next to any part of a male’s (boy or man) part.
Mark an “**F**” next to any part of a female’s (girl or woman) part.
Mark an “**E**” if the part could belong to either a male or a female body.

So your choices are “M,” “F,” and “E.”

<u> M </u>	penis	<u> E </u>	urethra
<u> F </u>	vagina	<u> M </u>	scrotum
<u> F </u>	fallopian tubes	<u> E </u>	anus
<u> M </u>	testicle/testes	<u> F </u>	ovary
<u> F </u>	uterus	<u> M </u>	sperm

DIRECTIONS: Fill in the blanks. Look up each word to make sure you have spelled it correctly.

1. The outside parts of the male reproductive system are the penis and the ____ **scrotum** ____.
2. A female has three openings: the ____ **urethra** ____ in the front, the ____ **vagina** ____ in the middle, and the ____ **anus** ____ in the back.
3. Sperm are made in the ____ **testicles or testes** ____.
4. Eggs are created in the ____ **ovaries** ____.
5. The opening of the uterus into the vagina is called the ____ **cervix** ____.
6. Both females and males store urine in the ____ **bladder** ____ which leaves the body through the urethra.