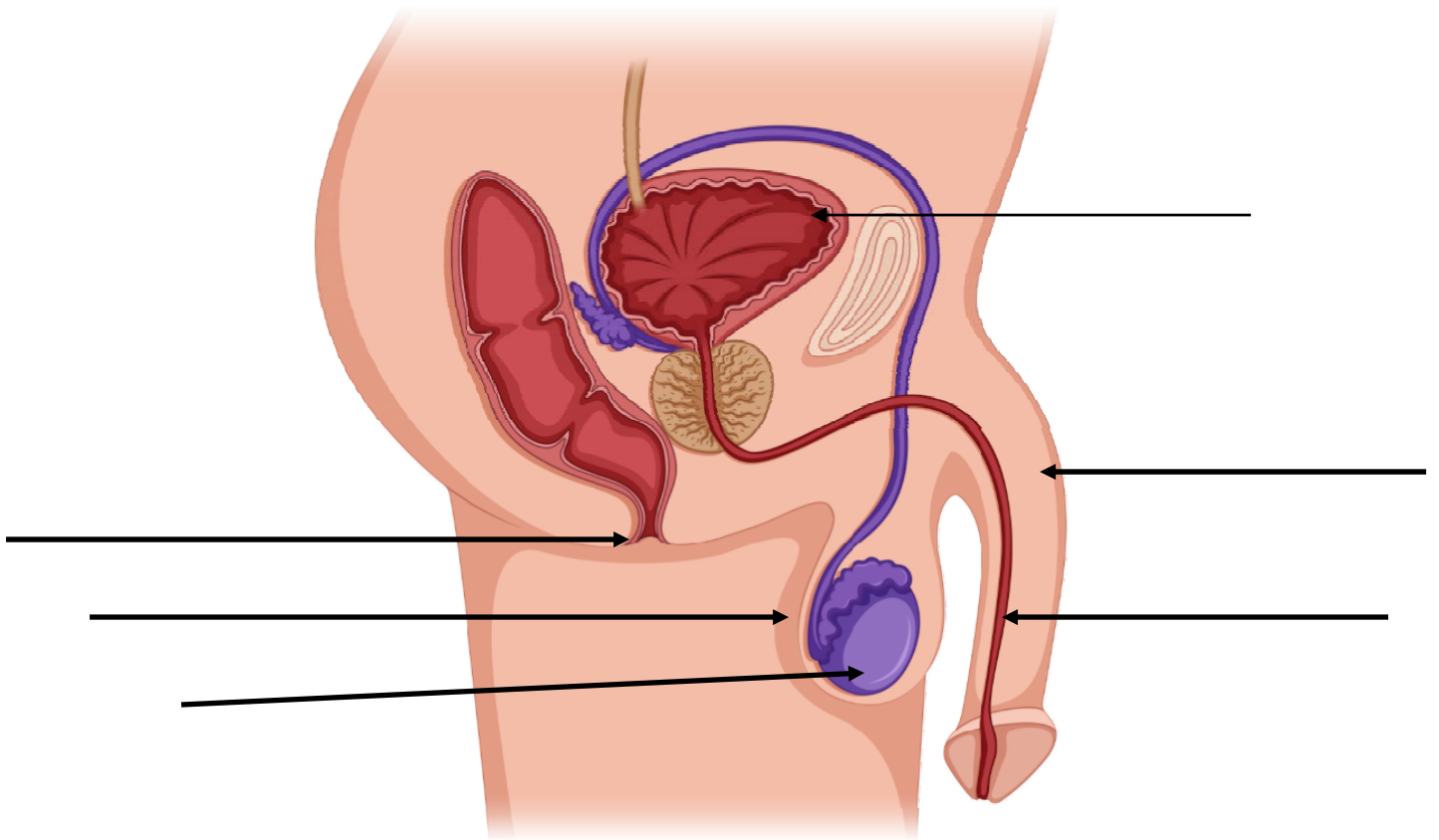
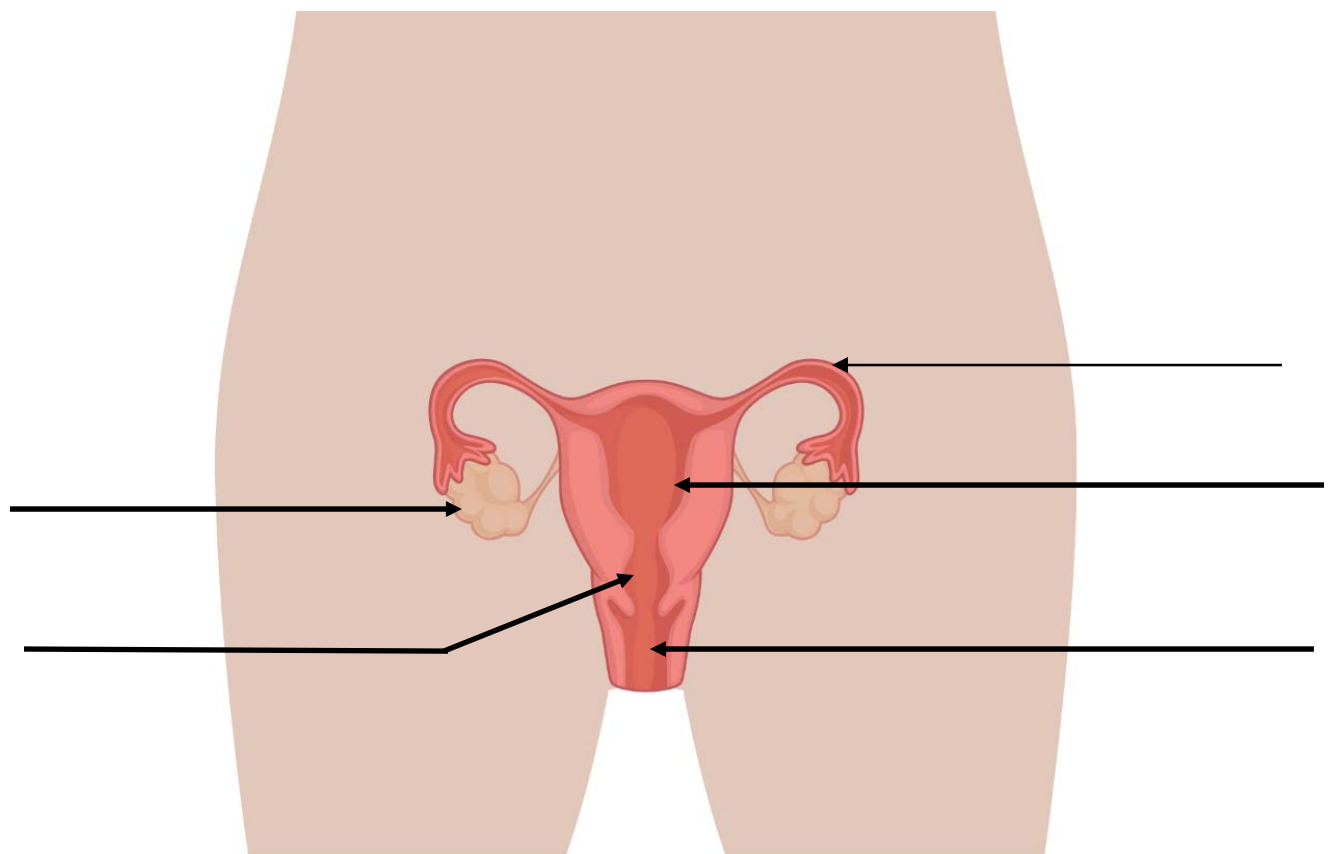


Male Reproductive Anatomy



Female Reproductive Anatomy



Female and Male Reproductive Systems

Directions: Mark an "M" next to any part of a male's (boy or man) part.
Mark an "F" next to any part of a female's (girl or woman) part.
Mark an "E" if the part could belong to either a male or a female body.

So your choices are "M," "F," and "E."

_____ penis	_____ urethra
_____ vagina	_____ scrotum
_____ fallopian tubes	_____ anus
_____ testicle/testes	_____ ovary
_____ uterus	_____ sperm

DIRECTIONS: Fill in the blanks. Look up each word to make sure you have spelled it correctly.

1. The outside parts of the male reproductive system are the penis and the _____.
2. A female has three openings: the _____ in the front, the _____ in the middle, and the _____ in the back.
3. Sperm are made in the _____.
4. Eggs are created in the _____.
5. The opening of the uterus into the vagina is called the _____.
6. Both females and males store urine in the _____ which leaves the body through the urethra.