

The primary outcome of the Long-range Planning Process is the development of a Decision-making Framework to be utilized by all levels and departments of Austin ISD in their ongoing prioritization of initiatives and the execution of capital investments. The Decision-making Framework will align with the Equity by Design process and is being created by a working group of committee members. (The progress of the working group will be shared at future meetings and the greater committee will have the opportunity to see the draft work prior to submission to the board of trustees.) The specific structure of the framework, its components, and its function are still to be determined and will be unique to the needs of the district.

Part of the Equity by Design process is to research exemplars. Below is an example of a decision-making framework developed by the City of San Diego Parks and Recreation Department. This framework helps the department determine which projects should happen and when each will occur. We are specifically sharing a non-education example intended to show the level of rigor and nature of the future framework being created for AISD and not specifics of how it may function.

Features of the framework from the City of San Diego Parks and Recreation Department are listed below with page numbers to where they are found in the full document, located here:

https://www.sandiego.gov/sites/default/files/july_2021_draft_parks_master_plan.pdf

- Equity is a driving goal (pp. 9-10; p. 37)
- Provides way to 'score' parks and prioritize revitalization efforts (p. 57-61)
 - Their 'Recreational Value-based Standard' scores a park not based on condition, but on the degree of value provided (e.g. amenities and potential for social connections) and the number of people it can serve (e.g. size and accessibility)
 - Each park is given an existing score paired with an 'ideal/proposed score' to demonstrate progress and provide clarity on which projects may provide the most overall value.
- Table 4 below lists the five approaches to the development of new parks based on attributes of potential land parcels. This serves as an additional framework the department can utilize when prioritizing and selecting projects (p. 75)

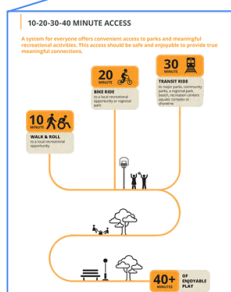


Table 4: Investment Prioritization Metrics

Approach	Definition
Access	Amount of time a person must travel to get to a park or facility
Equity	Socio-economic characteristics of people living in an area as identified in the Sustainability Department's Climate Equity Index (CEI)
Park Demand	Total parks provided in a community compared to the Citywide Recreational Value-Based Park Standard
Growth	Current and future population density within the Communities.
Social	Community factors such as safety, maintenance, programming, and facility deficiencies.

RECREATIONAL VALUE-BASED STANDARD SCORING GUIDE

