

MARTIN MIDDLE SCHOOL

Facility Site

1601 Haskell St.
Austin, TX 78702

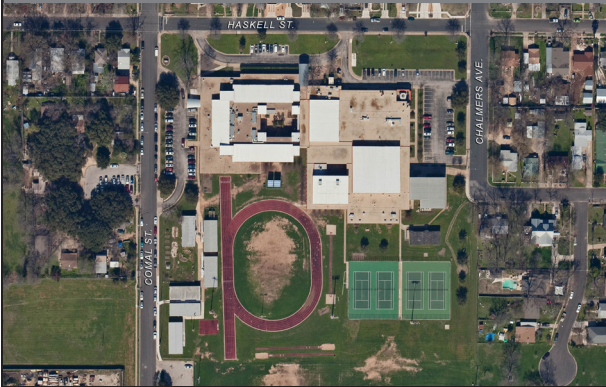
Building Area: 108,222 Square Feet
Site: 10 Acres
Date of First Construction: 1966

Assessment Timeline

Facility Condition Interview: 06/27/16
Facility Condition Field Visit: 07/11/16
Educational Suitability Interview: 08/15/16
Educational Suitability Field Visit: 07/14/16



Facility Summary



Martin Middle School was established in 1966, and consists of two main buildings. The permanent campus buildings are the two-story Main School Building (BLDG-051A), which includes the administration offices and classrooms, and Building B (BLDG-051B), which includes the stand-alone cafeteria, gymnasium, band room, and main mechanical room. The buildings are connected by exterior covered walkways.

Facility Condition Assessment (FCA)

The FCA is a process that is used to understand the deficiencies of a facility. It is conducted by a team of architects and engineers of various disciplines. The FCA is performed using existing data, facility staff interviews, facility walk-through assessments, analysis, and cost estimating.

FCA REPORT CARD

Martin Middle School

43

*The FCA score is equal to 100 minus the Facility Condition Index (FCI). The FCI is equal to the cost to maintain, repair and replace deficiencies of a facility divided by the current replacement value of the facility.

*The FCA and ESA scores are not a representation of the school's academic performance and does not reflect any construction or improvements performed after the assessment date.
*These are draft scores pending AISD feedback.

Links to Online Surveys:

[AISD Educational Suitability Survey](https://www.surveymonkey.com/r/AISD_Educational_Suitability_Survey) - https://www.surveymonkey.com/r/AISD_Educational_Suitability_Survey

[AISD Cuestionario para la Condicion de Instalacion y Conveniencia Educativa](https://www.surveymonkey.com/r/AISD_Educational_Suitability_Espanol) - https://www.surveymonkey.com/r/AISD_Educational_Suitability_Espanol

Educational Suitability Assessment (ESA)

The ESA measures the degree to which the facility supports teaching and learning considering the exterior and site, academic spaces, support spaces, future-ready spaces, library and media center, security, technology, storage, fixtures, furniture and equipment, environmental quality, and controllability of lighting and HVAC systems.

ESA REPORT CARD

Martin Middle School

46

2016 Facility Condition Assessment and Educational Suitability Assessment

Rev. 11/22/2016

Facility Condition Assessment

Rating Scale:



Excellent



Good



Average



Poor



Fail

BLDG-051A
Main School Building

BLDG-051B
Building B

Mechanical / HVAC

Mechanical / HVAC	A	A
Domestic Water Distribution	A	A
Plumbing Fixtures	A	A
Elevators & Lifts	G	N/A

Electrical

Electrical Distribution	P	P
Lighting	A	A
Communications & Security	A	G
Fire Alarm	A	A
Fire Protection / Suppression	A	A

Exterior Architecture

Exterior Doors	A	A
Exterior Walls	G	G
Exterior Windows	A	A
Exterior Stairs	G	G
Roofing	G	G

Interior Architecture

Interior Ceiling Finishes	A	G
Interior Doors	A	G
Interior Floor Finishes	A	A
Interior Walls	G	G
Interior Wall Finishes	A	A
Interior Stairs	G	N/A

Site / Civil

Roadways	P
Parking Lots	A
Pedestrian Paving (Sidewalks)	A
Site Development	A
Landscaping	G
Play Fields	A

Crawl Space

Drainage Below Building	N/A
Access / Ventilation	N/A
Foundation	N/A
Exposed Pipes	N/A
Exposed Ductwork	N/A

Education Suitability Assessment

Rating Scale



Excellent
81-100



Good
66-80



Average
51-65



Unsatisfactory
36-50



Very Unsatisfactory
20-35

Assessment Area	Score
Exterior	58
General Building	60
General Academic & Elective Spaces	48
Future Ready Student Development	45
Library / Media Center	53
Security	43
Technology	40
Storage	33
Furniture, Fixtures & Equipment	42
Environmental Quality (Lighting, Odors, Pests)	40
Controllability of Systems (Lights, Temps, Blinds)	44