

## REILLY ELEMENTARY SCHOOL

### Facility Site

405 Denson Drive  
Austin, TX 78752

Building Area: 41,622 Square Feet

Site: 11 Acres

Date of First Construction: 1954

### Assessment Timeline

Facility Condition Interview: 07/20/16

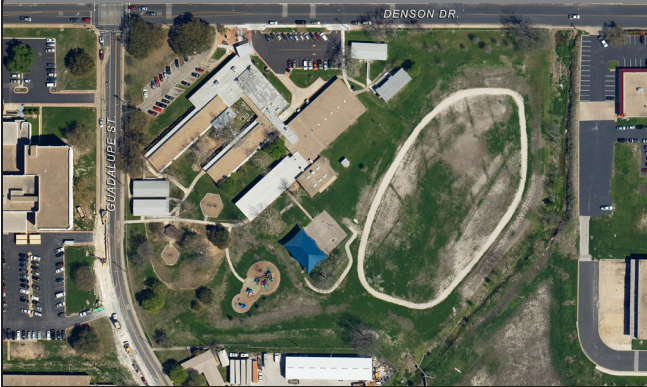
Facility Condition Field Visit: 07/25/16

Educational Suitability Interview: 07/20/16

Educational Suitability Field Visit: 07/20/16



## Facility Summary



Reilly Elementary School was established in 1954, and consists of a single primary school building. This permanent campus building is the Main School Building (BLDG-132A).

### Facility Condition Assessment (FCA)

The FCA is a process that is used to understand the deficiencies of a facility. It is conducted by a team of architects and engineers of various disciplines. The FCA is performed using existing data, facility staff interviews, facility walk-through assessments, analysis, and cost estimating.

#### FCA REPORT CARD

Reilly Elementary School

**42**

\*The FCA score is equal to 100 minus the Facility Condition Index (FCI). The FCI is equal to the cost to maintain, repair and replace deficiencies of a facility divided by the current replacement value of the facility.

\*The FCA and ESA scores are not a representation of the school's academic performance and does not reflect any construction or improvements performed after the assessment date.  
\*These are draft scores pending AISD feedback.

### Links to Online Surveys:

[AISD Educational Suitability Survey](https://www.surveymonkey.com/r/AISD_Educational_Suitability_Survey) - [https://www.surveymonkey.com/r/AISD\\_Educational\\_Suitability\\_Survey](https://www.surveymonkey.com/r/AISD_Educational_Suitability_Survey)

[AISD Cuestionario para la Condicion de Instalacion y Conveniencia Educativa](https://www.surveymonkey.com/r/AISD_Educational_Suitability_Espanol) - [https://www.surveymonkey.com/r/AISD\\_Educational\\_Suitability\\_Espanol](https://www.surveymonkey.com/r/AISD_Educational_Suitability_Espanol)

### Educational Suitability Assessment (ESA)

The ESA measures the degree to which the facility supports teaching and learning considering the exterior and site, academic spaces, support spaces, future-ready spaces, library and media center, security, technology, storage, fixtures, furniture and equipment, environmental quality, and controllability of lighting and HVAC systems.

#### ESA REPORT CARD

Reilly Elementary School

**66**

# 2016 Facility Condition Assessment and Educational Suitability Assessment

## Facility Condition Assessment

Rating Scale:



Excellent



Good



Average



Poor



Fail

BLDG-132A  
Main School Building

### Mechanical / HVAC

Mechanical / HVAC

P

Domestic Water Distribution

P

Plumbing Fixtures

P

Elevators & Lifts

N/A

### Electrical

Electrical Distribution

P

Lighting

A

Communications & Security

A

Fire Alarm

A

Fire Protection / Suppression

G

### Exterior Architecture

Exterior Doors

G

Exterior Walls

A

Exterior Windows

A

Exterior Stairs

G

Roofing

P

### Interior Architecture

Interior Ceiling Finishes

A

Interior Doors

A

Interior Floor Finishes

A

Interior Walls

A

Interior Wall Finishes

A

Interior Stairs

G

### Site / Civil

Roadways

A

Parking Lots

A

Pedestrian Paving (Sidewalks)

A

Site Development

P

Landscaping

A

Play Fields

A

### Crawl Space

Drainage Below Building

N/A

Access / Ventilation

N/A

Foundation

N/A

Exposed Pipes

N/A

Exposed Ductwork

N/A

## Education Suitability Assessment

### Rating Scale



**Excellent**  
81-100



**Good**  
66-80



**Average**  
51-65



**Unsatisfactory**  
36-50



**Very Unsatisfactory**  
20-35

Assessment Area	Score
Exterior	77
General Building	63
General Academic & Elective Spaces	60
Future Ready Student Development	73
Library / Media Center	62
Security	49
Technology	40
Storage	80
Furniture, Fixtures & Equipment	85
Environmental Quality (Lighting, Odors, Pests)	72
Controllability of Systems (Lights, Temps, Blinds)	60