

## PATTON ELEMENTARY SCHOOL



### Facility Site

6001 Westcreek Drive  
Austin, TX 78749

Building Area: 76,439 Square Feet

Site: 24 Acres

Date of First Construction: 1986

### Assessment Timeline

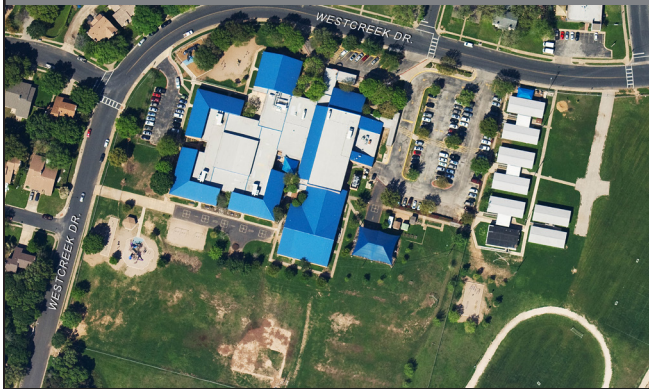
Facility Condition Interview: 07/26/16

Facility Condition Field Visit: 07/25/16

Educational Suitability Interview: 07/26/16

Educational Suitability Field Visit: 07/26/16

## Facility Summary



Patton Elementary School was built in 1986. It consists of one permanent campus building, the Main School Building (BLDG-143A), which contains the administration offices, classrooms, cafeteria, library, and gymnasium.

### Facility Condition Assessment (FCA)

The FCA is a process that is used to understand the deficiencies of a facility. It is conducted by a team of architects and engineers of various disciplines. The FCA is performed using existing data, facility staff interviews, facility walk-through assessments, analysis, and cost estimating.

### FCA REPORT CARD

Patton Elementary School

**52**

\*The FCA score is equal to 100 minus the Facility Condition Index (FCI). The FCI is equal to the cost to maintain, repair and replace deficiencies of a facility divided by the current replacement value of the facility.

\*The FCA and ESA scores are not a representation of the school's academic performance and does not reflect any construction or improvements performed after the assessment date.  
\*These are draft scores pending AISD feedback.

### Links to Online Surveys:

[AISD Educational Suitability Survey](https://www.surveymonkey.com/r/AISD_Educational_Suitability_Survey) - [https://www.surveymonkey.com/r/AISD\\_Educational\\_Suitability\\_Survey](https://www.surveymonkey.com/r/AISD_Educational_Suitability_Survey)

[AISD Cuestionario para la Condicion de Instalacion y Conveniencia Educativa](https://www.surveymonkey.com/r/AISD_Educational_Suitability_Espanol) - [https://www.surveymonkey.com/r/AISD\\_Educational\\_Suitability\\_Espanol](https://www.surveymonkey.com/r/AISD_Educational_Suitability_Espanol)

### Educational Suitability Assessment (ESA)

The ESA measures the degree to which the facility supports teaching and learning considering the exterior and site, academic spaces, support spaces, future-ready spaces, library and media center, security, technology, storage, fixtures, furniture and equipment, environmental quality, and controllability of lighting and HVAC systems.

### ESA REPORT CARD

Patton Elementary School

**63**

# 2016 Facility Condition Assessment and Educational Suitability Assessment

## Facility Condition Assessment

Rating Scale:



BLDG-143A  
Main School Building

### Mechanical / HVAC

Mechanical / HVAC	<span style="color: yellow;">A</span>
Domestic Water Distribution	<span style="color: green;">G</span>
Plumbing Fixtures	<span style="color: green;">G</span>
Elevators & Lifts	N/A

### Electrical

Electrical Distribution	<span style="color: yellow;">A</span>
Lighting	<span style="color: green;">G</span>
Communications & Security	<span style="color: green;">G</span>
Fire Alarm	<span style="color: green;">G</span>
Fire Protection / Suppression	<span style="color: yellow;">A</span>

### Exterior Architecture

Exterior Doors	<span style="color: green;">G</span>
Exterior Walls	<span style="color: green;">G</span>
Exterior Windows	<span style="color: green;">G</span>
Exterior Stairs	N/A
Roofing	<span style="color: green;">G</span>

### Interior Architecture

Interior Ceiling Finishes	<span style="color: green;">G</span>
Interior Doors	<span style="color: green;">G</span>
Interior Floor Finishes	<span style="color: green;">G</span>
Interior Walls	<span style="color: green;">G</span>
Interior Wall Finishes	<span style="color: green;">G</span>
Interior Stairs	N/A

### Site / Civil

Roadways	<span style="color: orange;">P</span>
Parking Lots	<span style="color: orange;">P</span>
Pedestrian Paving (Sidewalks)	<span style="color: yellow;">A</span>
Site Development	<span style="color: yellow;">A</span>
Landscaping	<span style="color: yellow;">A</span>
Play Fields	<span style="color: orange;">P</span>

### Crawl Space

Drainage Below Building	N/A
Access / Ventilation	N/A
Foundation	N/A
Exposed Pipes	N/A
Exposed Ductwork	N/A

## Education Suitability Assessment

### Rating Scale



Assessment Area	Score
Exterior	<span style="color: yellow;">62</span>
General Building	<span style="color: green;">73</span>
General Academic & Elective Spaces	<span style="color: yellow;">62</span>
Future Ready Student Development	<span style="color: green;">73</span>
Library / Media Center	<span style="color: green;">76</span>
Security	<span style="color: green;">69</span>
Technology	<span style="color: orange;">40</span>
Storage	<span style="color: orange;">47</span>
Furniture, Fixtures & Equipment	<span style="color: orange;">47</span>
Environmental Quality (Lighting, Odors, Pests)	<span style="color: green;">68</span>
Controllability of Systems (Lights, Temps, Blinds)	<span style="color: yellow;">52</span>