



## Educational Suitability Summary Report

Pickle Elementary School

Date: 08/01/2016

**Score 74% Good**

Pickle Elementary School, serving a student population of approximately 640 students in northeast Austin, is a school that shares their building with a City of Austin recreation center. While the faculty were generally pleased with the appearance of their facility, they expressed that the most important priorities for the campus are creating equitable technology access for all classrooms, improving security at the facility, and improving acoustics and furniture in the cafeteria.

### Survey Overview

The survey for teachers and administrators received no responses. The feedback for educational suitability is limited to the in-person interview.

### Interview Overview

The interview at Pickle Elementary was attended by the principal, Lauro Davalos, and Audrey Guerrero. While they are generally happy with their facility's appearance and condition, there were some spaces that are not performing adequately. Innovation stations are not in all of the classrooms, and those that are in the facility are failing. The cafeteria has poor acoustics and broken furniture which makes it inadequate for assemblies. The computer lab is currently in a hallway "pod" space separated by temporary partitions. Staff restrooms, conference space, and storage spaces are inadequate. The portables currently house 2<sup>nd</sup> grade, special education, art, and music classes.

The faculty desire improvements to cafeteria acoustics and seating to create an acceptable assembly space. The display space and projection capabilities must also be improved on campus. They would like additional classroom space to replace the portables, or at least to have covered walkways out to the classrooms. For the exterior playground spaces, updated equipment and more swings are desired. A makerspace and hands-on learning lab would be a highly desirable addition.

The front entry of the school does not have a secure vestibule; and the facility has multiple entry points, including a wing owned by the city of Austin, creating supervision difficulties. Site lighting and video surveillance needs improvement throughout the campus. The road accessing the facility needs speed bumps to decreased high-speed traffic adjacent to the campus, and the pick-up and drop-off waiting area needs a covering. The campus needs shade for the play areas and covered walkways to the portables as well. The sidewalks also need leveling, as they are currently creating tripping hazards.

When considering the future of education, the faculty expressed that education will become increasingly global and less grade level-based. This will require increased technology and access to communication tools. Hands-on exploratory learning spaces and flex spaces will be highly desired.

## Educational Suitability Summary Report

### Pickle Elementary School

The most important priorities for the campus as expressed by the faculty are creating equitable technology access for all classrooms, improving security at the facility, and improving acoustics and furniture in the cafeteria.

#### Assessment Findings

The Educational Suitability Assessment of Pickle Elementary School earned a 74% overall score and places the campus in a category of good. The assessment consists of 11 categories to determine areas that need more attention.

#### Lower Scoring Categories: Average Categories

##### Exterior

The score is average.

The vehicular circulation is an issue due to a small stack space area that causes traffic issues during pick-up and drop-off. There are some outdoor learning spaces that need additional development. The playground is limited. These spaces could use some additional shade and equipment updates. The building has some signage and color-coded wings for easy wayfinding.

##### Security

The score is average.

The location of the central office does not create a secure vestibule for the campus; however it is located at the front entry for supervision of those entering the school. Key card access is at all major entries, and the interior transparency is very good for faculty supervision within the school. Site lighting around the campus is unsatisfactory and needs upgrades. The portables need covered walkways to protect students from poor weather conditions.

#### Higher Scoring Categories: Good and Excellent Categories

##### Academic & Co-Curricular Support

The score is good.

The Pre-K and Kindergarten areas are appropriately configured with adequate storage and restrooms. The athletic spaces are large, in good condition, and the support spaces are well-sized. The music classroom in the building is large and the stage area is in good condition. However, one music and one art class are taught in portables which is insufficient for both classroom and storage space. The art room in the building is large and equipped with the appropriate equipment. The special education spaces are also in the portables which is insufficient. The cafeteria is large, but it has poor acoustics and damaged furniture. There are exterior doors at the cafeteria that pose a security issue due to parents trying to enter at this area.

##### Future Ready Student Development

The score is good.

The campus classrooms and support spaces are adequate in size to accommodate hands-on project-based learning. The meeting space is limited, but the common “pod” areas allow for

## Educational Suitability Summary Report

### Pickle Elementary School

small group collaborations for groups of different sizes. One of these pod spaces is currently being used as a computer lab. The facility lacks consistent visual communication tools across classrooms. There are some projectors and innovation stations, but some of this technology is quite outdated.

#### **Technology**

The score is good.

There is a mix of older and newer technology in the form of projectors and some innovation stations. There is convenient access to power outlets and data ports in learning spaces.

#### **General Building**

The score is good.

The cafeteria and gymnasium are accessible from the main hallway and can be secured from the rest of the building for community functions. The general appearance of the school is good and shows pride in the campus and students works.

#### **Library/Media Center**

The score is excellent.

The library has space and flexibility for collaborative work of different group sizes. There is a learning stair, but there are limited areas for social interactions. The library needs more separation for quiet study and upgraded technology for students.

#### **Furniture, Fixtures & Equipment**

The score is excellent.

The campus has good furniture. This furniture is satisfactory for flexible configurations due to the desk and chair styles. The furniture is size-appropriate for the students at this facility.

#### **Controllability of Systems**

The score is excellent.

The classrooms have functional thermal controls and multiple switches for artificial lighting control which is excellent. The classrooms have blinds for controlling natural light that are in moderate condition.

#### **Environmental Quality**

The score is excellent.

The quality of the artificial lighting is appropriate for classroom functions, and all of the learning spaces have exterior views and nice natural light. However, the gym and cafeteria are reported as having poor acoustics.

#### **Storage**

The score is excellent.

The general building storage is adequate. The classrooms feature built-in cabinets that are in good condition and provide adequate storage space. Student storage is accommodated by the furniture and by wall hooks.



## Austin ISD Educational Suitability Assessment Criteria

<b>School</b>	<b>Pickle Elementary</b>	<b>BLDG-164</b>
<b>Name</b>	<b>Ellen Saathoff, Sakshi Gandhi</b>	
<b>Date</b>	<b>Interview and Walk - 8/1/2016 (REV 1 - 12/09/16 SPED Comments)</b>	

### Scoring Scale

Excellent  
Good  
Average  
Unsatisfactory  
Very Unsatisfactory

81%-100%  
66%-80%  
51%-65%  
36%-50%  
20%-35%

## Overall Educational Suitability Score **74%**

1 - Exterior	55%
2 - General Building	73%
3 - Academic & Co-Curricular Support	66%
4 - Future Ready Student Development	68%
5 - Library/Media Center	82%
6 - Security	63%
7 - Technology	70%
8 - Storage	93%
9 - Furniture, Fixtures & Equipment	87%
10 - Environmental Quality	92%
11 - Controllability of Systems	92%

1 - Exterior		1	2	3	4	5	N/A	9.00	
1.1	Does the site permit desirable separation of vehicular, bus and pedestrian traffic?			3				Comments	1.00 3.00
	1) Bus , car and pedestrian all happen at the same location. 2) Cars and buses mix, pedestrians are separated. 3) Buses, cars, and pedestrians are separate but stack space is small. 4) Buses, cars, and pedestrians are separate but drop off does not have a canopy or a holding place like a commons or cafeteria. 5) Buses, cars, and pedestrians are separate and drop off area has a canopy and destination. N/A) Does not apply.							The school was designed for students to walk from the surrounding houses, but now most of the students come by car. This creates increased traffic congestion around the campus.	
1.2	Are opportunities provided for outdoor learning (outdoor classrooms, gardens, etc.)?			3				Comments	1.00 3.00
	1) Outdoor space exists is not developed 2) Outdoor space for learning exists but not connected to classroom learning areas. 3. Outdoor learning spaces exist and are accessible but not in good condition. 4. Outdoor learning spaces need minor improvements to function well. 5. Outdoor learning spaces are in excellent condition. N/A) Does not apply.								
1.3	Are outdoor play spaces and playfields adequate in size and configuration?		2					Comments	1.00 2.00
	1) Outdoor play space exists, not developed 2) Outdoor play space exists but is not connected to gym or other athletic support areas or is too small. 3. Outdoor play spaces exist, are connected to other athletic areas, are the right size, but are not in good condition. 4. Outdoor play spaces need minor improvements to function well. 5. Outdoor play spaces are in excellent condition. N/A) Does not apply.							The playground needs additional shade and more equipment.	
									See Image 1
1.4	Is the building easily identified with appropriate signage and community wayfinding?				4			Comments	0.25 1.00
	1) Campus has no signage and no striping. 2) Signage is faded/hidden. 3) Signage & striping visible but not apparent. 4) Signage is visible but not good condition. 5. Signage and wayfinding is visible and easy to use. N/A) Does not apply.							The signage could be clearer. However, the four different colors of the wings helps wayfinding.	

2 - General Building		1	2	3	4	5	N/A	5.50	
2.1	Are interior circulation routes wide enough to safely and effectively accommodate student movement?				4			Comments	0.50 2.00
	1) Primary circulation is 5'-0" to 6'-0" wide. 2) Primary circulation is 6'-0" to 7'-0" wide 3) Primary circulation is 7'-0" to 8'-0" wide 4) Primary circulation is 8'-0"-10'-0" wide 5) Primary circulation is 10'-0"+ wide N/A) Does not apply.							There is a combination of steps and ramps in the main hallway. The classroom corridors are 8'-0" wide.	See Image 2
2.2	Are community use areas arranged so that the school can allow night functions without full school access?			3				Comments	0.75 2.25
	1) Cafeteria, gym, and library cannot be accessed from parking area or secured from the rest of campus. 2) Only one of the public spaces (Cafeteria, Gym and Library) can be accessed from parking and secured from the rest of the building. 3) Only two of the public spaces (Cafeteria, Gym and Library) can be accessed from parking and secured from the rest of the building. 4) All of the public spaces (Cafeteria, Gym and Library) can be accessed from parking and secured from the rest of the building but do not have individual entrances. 5) Cafeteria, gym, and library can be accessed from parking and locked off from rest of campus for night/evening use with their own entrance. N/A) Does not apply.							The cafeteria and gym are arranged appropriately to be secured from the rest of the building.	
2.3	Does the general appearance of the school evoke pride for the students and community?					5		Comments	0.25 1.25
	1) General appearance is poor. 2) General appearance is aged but ok. 3) General appearance is good. 4) General appearance shows pride in campus and student works. 5) General appearance shows pride in campus and student works and is welcoming to the community. N/A) Does not apply.								

3 - Academic & Co-Curricular Support		1	2	3	4	5	N/A	43.00	
3.2	Are Pre-K and Kinder classrooms appropriately configured per the ed spec? (elementary school only)					5		Comments	1.00 5.00
1) Very unsatisfactory - Too small, awkward layout, does not meet needs 2) Unsatisfactory - Too small, only one area for all teaching methods, limited flexibility 3) Neutral - Moderate size, two areas for different teaching methods, some flexibility, access to student storage/casework 4) Satisfactory - Good size, at least two zones for different teaching methods, flexibility and student storage, not new 5) Very Satisfactory - Good size, two zones for different teaching methods, flexibility and student storage/casework, adequate display area and visual teaching tools N/A) Does not apply.								See Image 3	
3.3	Do Pre-K and Kinder have appropriate support spaces such as restrooms and storage per the ed spec? (elementary only)					5		Comments	1.00 5.00
1) Very unsatisfactory - No storage, casework, or restrooms 2) Unsatisfactory - unsatisfactory size or condition of storage, casework, or restrooms 3) Neutral - Moderate size or moderate condition storage, casework, and restrooms 4) Satisfactory - Satisfies ed spec for storage, casework, and restrooms 5) Very Satisfactory - exceeds ed spec for storage, casework, and restrooms N/A) Does not apply.									
3.4	Are Science Classrooms/Labs appropriately configured per the ed spec?						N/A	Comments	0.00 0.00
1) Very unsatisfactory 2) Unsatisfactory 3) Neutral 4) Satisfactory 5) Very Satisfactory N/A) Does not apply. (Elementary schools)									
3.5	Are Science Classrooms/Labs <b>support</b> areas appropriately configured per the ed spec?						N/A	Comments	0.00 0.00
1) Very unsatisfactory - Support spaces are disconnected from served spaces, too small, do not meet needs 2) Unsatisfactory - Support spaces are connected, but too small, do not meet needs 3) Average - Connected, moderate size, but need some renovations or updates 4) Good - Connected, good size, meets needs, functions well 5) Very good - connected, generous size, nice condition, functions appropriately N/A) Does not apply. (Elementary schools)									

3 - Academic & Co-Curricular Support - Continued		1	2	3	4	5	N/A		
3.6	Are Physical Education and Athletic spaces appropriately configured per the ed spec?				4			Comments	1.004.00
1) Very unsatisfactory 2) Unsatisfactory 3) Average 4) Good 5) Very good N/A) Does not apply.								See Image 4	
3.7	Are Physical Education and Athletic <b>support</b> spaces appropriately configured per the ed spec?				4			Comments	1.004.00
1) Very unsatisfactory - Support spaces are disconnected from served spaces, too small, do not meet needs 2) Unsatisfactory - Support spaces are connected, but too small, inadequate for needs 3) Average - Connected, moderate size, but need some renovations or updates to function well 4) Good - Connected, good size/layout, meets needs/functions well 5) Very good - connected, generous size, nice condition, functions appropriately N/A) Does not apply.								The gym acoustics need improving.	
3.8	Are music, drama, or performance spaces appropriately configured per the ed spec?				4			Comments	1.004.00
1) Very unsatisfactory 2) Unsatisfactory 3) Average 4) Good 5) Very good N/A) Does not apply.								There is one music room in the building that is well configured, and the stage is in excellent condition. However there is one music room in a portable which is not ideal.	
								See Image 5	
3.9	Are music, drama, or performance <b>support</b> spaces appropriately configured per the ed spec?				4			Comments	1.004.00
1) Very unsatisfactory - Support spaces are disconnected from served spaces, too small, do not meet needs 2) Unsatisfactory - Support spaces are connected, but too small, inadequate for needs 3) Average - Connected, moderate size, but need some renovations or updates to function well 4) Good - Connected, good size/layout, meets needs/functions well 5) Very good - connected, generous size, nice condition, functions appropriately N/A) Does not apply.									



3 - Academic & Co-Curricular Support - Continued										1	2	3	4	5	N/A					
3.10	Are Visual Arts spaces appropriately configured per the ed spec?											3					Comments		1.00	3.00
1) Very unsatisfactory 2) Unsatisfactory 3) Average 4) Good 5) Very good N/A) Does not apply.										The art room in the main building is satisfactory. There is an art room in a portable which is unsatisfactory.										
3.11	Are Visual Arts <b>support</b> spaces appropriately configured per the ed spec?											3					Comments		1.00	3.00
1) Very unsatisfactory - Support spaces are disconnected from served spaces, too small, do not meet needs 2) Unsatisfactory - Support spaces are connected, but too small, inadequate for needs  3) Average - Connected, moderate size, but need some renovations or updates to function well 4) Good - Connected, good size/layout, meets needs/functions well 5) Very good - connected, generous size, nice condition, functions appropriately N/A) Does not apply.										The support space is appropriate, but there is no connected restroom. This is highly desired for the adjacent music and art room.										
3.12	Are computer lab spaces appropriately configured?										2						Comments		1.00	2.00
1) Very unsatisfactory 2) Unsatisfactory 3) Average 4) Good 5) Very good N/A) Does not apply.										The computer lab is set up in a temporary space.										
										See Image 6										
3.13	Are computer lab <b>support</b> spaces appropriately configured?										2						Comments		1.00	2.00
1) Very unsatisfactory - Support spaces are disconnected from served spaces, too small, do not meet needs 2) Unsatisfactory - Support spaces are connected, but too small, inadequate for needs  3) Average - Connected, moderate size, but need some renovations or updates to function well 4) Good - Connected, good size/layout, meets needs/functions well 5) Very good - connected, generous size, nice condition, functions appropriately N/A) Does not apply.																				

3 - Academic & Co-Curricular Support - Continued		1	2	3	4	5	N/A		
3.14	Are Special Education spaces appropriately configured per the ed spec?		2					Comments	1.00 <b>2.00</b>
							1) Very unsatisfactory 2) Unsatisfactory 3) Average 4) Good 5) Very good N/A) Does not apply.	The special education classrooms are in the portables. <i>SPED comment: Life Skills room is just a general classroom with no shower, kitchenette, washer/dryer etc. The restroom is very small and not ADA compliant.</i>	
3.15	Are Special Education <b>support</b> spaces appropriately configured per the ed spec?		2					Comments	1.00 <b>2.00</b>
							1) Very unsatisfactory - Support spaces are disconnected from served spaces, too small, do not meet needs 2) Unsatisfactory - Support spaces are connected, but too small, inadequate for needs 3) Average - Connected, moderate size, but need some renovations or updates to function well 4) Good - Connected, good size/layout, meets needs/functions well 5) Very good - connected, generous size, nice condition, functions appropriately N/A) Does not apply.	The portables are not adequate for the space and support necessary for special education classrooms.	
3.16	Are the student dining facilities appropriately configured?			3				Comments	1.00 <b>3.00</b>
							1) Very unsatisfactory - Too small, poor circulation, inflexible seating in poor condition 2) Unsatisfactory - Too small or inadequate circulation, seating in poor condition 3) Average - moderate size, with adequate circulation, seating in okay condition 4) Good - good size, adequate circulation, seating in good condition 5) Very good - good size, adequate circulation, seating in good condition, with more than one option for eating space (ex: connection to outdoor eating space) N/A) Does not apply.	The cafeteria is large, but the acoustics are poor. The furniture is damaged.	

See Image 7

4 - Future Ready Student Development		1	2	3	4	5	N/A	27.00	
4.1	Does the facility provide specialized space and opportunities for hands-on project-based learning?			3				Comments	1.00 3.00
1) Very unsatisfactory - No project space 2) Unsatisfactory - Non-dedicated, undersized or otherwise inadequate 3) Average - Limited dedicated spaces of moderate size and layout, equipment and furniture appropriate but need updates 4) Good - Dedicated spaces of adequate size and layout, most of the equipment and furniture is appropriate for program 5) Very good - Dedicated spaces of adequate size and layout, equipment and furniture appropriate for program N/A) Does not apply.									
4.2	Are general classrooms large enough to support project-based learning and multiple teaching modalities?					5		Comments	1.00 5.00
1) Very unsatisfactory -too small to move, set for lecture only, no connectivity, no flexibility 2) Unsatisfactory - adequate size but set for lecture only, no connectivity, no flexibility 3) Neutral - have flexibility and space for hands on or project based learning 4) Satisfactory - have flexibility and space for hands on or project based learning and connectivity for global learning 5) Very Satisfactory - space for hands on learning, flexibility for different groupings, and connectivity for global classrooms N/A) Does not apply.									The classrooms are a generous size.
4.3	Is there adequate storage and or support space to support project-based learning?				4			Comments	1.00 4.00
1) Very unsatisfactory - none 2) Unsatisfactory-minimal casework/storage 3) Average - moderately sized casework 4) Good - large casework/cabinets/support 5) Very good - walk-in storage/ample support space N/A) Does not apply.									
4.4	Are there adequate places to display the evidence and artifacts of learning (both 2D and 3D)?			3				Comments	1.00 3.00
1) Very unsatisfactory - No display cases or wall space for display 2) Unsatisfactory - 1 wall in classrooms or very few spaces for display 3) Average - 2 walls in classrooms or some hallway spaces for display 4) Good - 3 walls in classrooms or multiple hallway spaces for display 5) Very good - ample classroom display space or many hallway spaces, including display cases N/A) Does not apply.									More display space is desired by the campus faculty.

4 - Future Ready Student Development - Continued		1	2	3	4	5	N/A		
4.5	Does the building provide adequate opportunities for students/teachers to collaborate in varying group sizes?			3				Comments	1.00 3.00
1) Very unsatisfactory - no common spaces or meeting rooms or in very poor condition 2) Unsatisfactory - a few common spaces or meeting rooms in unsatisfactory condition 3) Average - a few common spaces and meeting areas needing updates 4) Good - multiple common spaces and meeting rooms in good condition 5) Very good - adequate common spaces and meeting rooms of excellent quality N/A) Does not apply.								See Image 8	
4.6	Does the building provide opportunities for informal interaction?				4			Comments	1.00 4.00
1) Very unsatisfactory - no gathering areas or areas in very poor condition 2) Unsatisfactory - one exterior or interior common space with no seating or unsatisfactory condition 3) Average - one exterior or interior common space with seating needing updates 4) Good - 2 exterior or interior common spaces with appropriate seating/good condition 5) Very good - multiple exterior and interior commons spaces with appropriate seating in excellent condition N/A) Does not apply.									
4.7	Does the building provide adequate opportunities for students to work independently?			3				Comments	1.00 3.00
1) Very unsatisfactory - None/poor condition 2) Unsatisfactory - One area far from classrooms in unsatisfactory condition 3) Average - one area for independent work with appropriate furniture needing updates 4) Good - clusters or small rooms adjacent to classrooms with furniture in good condition 5) Very good - multiple clusters or small rooms adjacent to classrooms with appropriate furniture in excellent condition N/A) Does not apply.									

4 - Future Ready Student Development - Continued		1	2	3	4	5	N/A			
4.8	Does the building support career education per house bill 5? (High School only)						N/A	Comments	0.00	0.00
1) Very unsatisfactory - No dedicated spaces 2) Unsatisfactory -Some spaces being used for both career education and other subjects 3) Average - A few dedicated career ed spaces, but inadequate configuration/ equipment for needs 4) Good - Some dedicated career ed spaces with adequate configuration and equipment for program needs 5) Very good - Dedicated career ed spaces with good configuration and equipment for program needs - new condition N/A) Does not apply.										
4.9	Do the career education spaces simulate real world or college environments? (High School Only)						N/A	Comments	0.00	0.00
1) Very unsatisfactory - No dedicated spaces, lack of necessary equipment 2) Unsatisfactory - Non-dedicated, undersized or otherwise inadequate 3) Average - A few dedicated spaces of moderate size/layout, equipment and furniture appropriate but need updates 4) Good - Dedicated spaces of adequate size and layout, most of the equipment and furniture is appropriate for program 5) Very good - Dedicated spaces of adequate size and layout, equipment and furniture appropriate for program N/A) Does not apply.										
4.10	Does the building have adequate visual communication tools?		2					Comments	1.00	2.00
1) Very unsatisfactory - No vis comm tools 2) Unsatisfactory - outdated, poorly functioning, or insufficient 3) Good - mix of old and new whiteboards/projectors/etc. 4) Good - projectors, marker boards, smart boards in most spaces - good condition 5) Very good - projectors, marker boards, smart boards in most spaces - new condition N/A) Does not apply.								Some of the classrooms are lacking projectors.		

5 - Library/Media Center		1	2	3	4	5	N/A	22.50	
5.1	Is the Library/Media Center easily accessible for the occupants and visitors to the school?			3				Comments	0.501.50
1) Very unsatisfactory 2) Unsatisfactory 3) Average 4) Good 5) Very good N/A) Does not apply.								The library is somewhat distant from the main entry but convenient to the classroom spaces.	
5.2	How well does the Library/Media Center support quiet study?				4			Comments	1.004.00
1) Very unsatisfactory 2) Unsatisfactory 3) Average 4) Good 5) Very good N/A) Does not apply.								There is room for quiet study.	
5.3	How well does the Library/Media Center support social interaction?			3				Comments	1.003.00
1) Very unsatisfactory 2) Unsatisfactory 3) Average 4) Good 5) Very good N/A) Does not apply.								There is a learning stair, but there are limited areas for social interaction.	
								See Image 9	
5.4	How well does the Library/Media Center support collaborative work in small groups (4-8 students)?					5		Comments	1.005.00
1) Very unsatisfactory 2) Unsatisfactory 3) Average 4) Good 5) Very good N/A) Does not apply.									

5 - Library/Media Center - Continued		1	2	3	4	5	N/A		
5.5	How well does the Library/Media Center support collaborative work in larger groups (10-25)?					5		Comments	1.005.00
1) Very unsatisfactory 2) Unsatisfactory 3) Average 4) Good 5) Very good N/A) Does not apply.									
5.6	How well does the Library/Media Center support technology?				4			Comments	1.004.00
1) Very unsatisfactory - Very inadequate power outlets, no Wi-Fi capability, no computers, tablets, laptops, media carts or screens for use 2) Unsatisfactory - Some power, no Wi-Fi capability, outdated and inadequate technology available 3) Average - Some power outlets, network connectivity, technology available 4) Good - Adequate power outlets available, network connectivity, appropriate number of computers/tablets/laptops/media carts or screens available 5) Very good - Adequate power outlets available, good network connectivity, computers, tablets, laptops and media carts or screens available and adequate for number of students N/A) Does not apply.								The library needs updated equipment.	

6 - Security		1	2	3	4	5	N/A	10.25	
6.1	Does the facility have key card access at all major entries?					5		Comments	0.25 1.25
1) Very unsatisfactory - No entries 2) Unsatisfactory - 1/4 of major entries have key card access 3) Average 1/2 of entries have key card access 4) Good - 3/4 of major entries have key card access 5) Very good - all of major entries have key card access N/A) Does not apply.									
6.2	How adequate is site lighting and security for the campus overall?		2					Comments	1.00 2.00
1) No exterior lighting, no secure perimeter 2) Lighting is limited to front entry only, parking lot lighting poor, security is minimal 3) Lighting at all night-use entries and parking lot, but poor condition. Security is moderate 4) Lighting at all night-use entries and parking lots, good condition, signage less visible. Perimeter is well secured, but needs updates. 5) Signage, parking lots, and entries are well lit, visible and easy to use. Perimeter is very secure. N/A) Does not apply.								The lighting and video surveillance around the campus needs updating. There are many entrances to the building, which creates a supervision challenge. The uneven concrete sidewalks are also tripping hazards.	
6.3	Is the main office properly located and configured with a secure vestibule to the main corridor?			3				Comments	1.00 3.00
1) Very unsatisfactory - No secure vestibule, office located far from main entry. Allows visitors access to school unsupervised. 2) Unsatisfactory - No secure vestibule, office located somewhat far from main entry, minimal supervision of visitors. 3) Average - Office close to entry, views of front door, but no secure vestibule 4) Good - Office is well-located with a secure vestibule, but needs updates 5) Very good - Office well-located with secure vestibule and all appropriate security features. N/A) Does not apply.								The main entry does not have a secure vestibule.	
6.4	Is there enough interior transparency for faculty to affectively supervise students who are not in classrooms?				4			Comments	1.00 4.00
1) Very unsatisfactory 2) Unsatisfactory 3) Average 4) Good 5) Very good N/A) Does not apply.									



7 - Technology		1	2	3	4	5	N/A	7.00		
7.1	How well equipped are the facilities with instructional technology?		2					Comments	1.00	2.00
<div>1) Very unsatisfactory - very few or no available computers or devices. Old/outdated technology</div> <div>2) Unsatisfactory- few computers/devices. Some outdated technology</div> <div>3) Average- A few computers/devices. A mix of new and outdated technology</div> <div>4) Good - multiple computers or devices per room. Mostly new technology.</div> <div>5) Very good - multiple computers and devices and new technology.</div> <div>N/A) Does not apply.</div>								The technology needs upgrades.		
7.2	Is there an adequate number of power and data outlets in learning spaces?					5		Comments	1.00	5.00
<div>1) Very unsatisfactory - none</div> <div>2) Unsatisfactory - only for teacher</div> <div>3) Average - for teacher and 1-2 students</div> <div>4) Good - 2-3 outlets per wall</div> <div>5) Very good - 3-4 per wall</div> <div>N/A) Does not apply.</div>										

8 - Storage		1	2	3	4	5	N/A	14.00	
8.1	Is there adequate general storage in the building?				4			Comments	1.00 4.00
1) Very unsatisfactory 2) Unsatisfactory 3) Average 4) Good 5) Very good N/A) Does not apply.									
8.2	Is there adequate classroom storage?					5		Comments	1.00 5.00
1) Very unsatisfactory 2) Unsatisfactory 3) Average 4) Good 5) Very good N/A) Does not apply.									
8.3	Is there adequate student storage?					5		Comments	1.00 5.00
1) Very unsatisfactory 2) Unsatisfactory 3) Average 4) Good 5) Very good N/A) Does not apply.								The students have hooks on the walls to hang their bags. Some of the furniture accommodates student storage.	

9 - Furniture, Fixtures & Equipment		1	2	3	4	5	N/A	12.00	
9.1	What is the current condition of the furniture?				4			Comments	0.75 3.00
<div>1) Very unsatisfactory - damaged/non-functioning</div> <div>2) Unsatisfactory - torn, bent, wrong size</div> <div>3) Average - scratched/dented/marked</div> <div>4) Good - not new but sturdy and clean</div> <div>5) Very good - new</div> <div>N/A) Does not apply.</div>								Some older furniture is still used on the campus. The tables and attached seats in the cafeteria are in poor condition.	
								See Image 10	
9.2	How well does furniture accommodate rapid reconfiguration of a space?				4			Comments	1.00 4.00
<div>1) Very Unsatisfactory - Furniture is fixed or very heavy</div> <div>2) Unsatisfactory - Furniture does not allow desks to be configured as individuals, small groups, or large groups</div> <div>3) Average - Mix of furniture that can reconfigure and that cannot</div> <div>4) Good - Furniture is flexible for multiple configurations of space</div> <div>5) Very good - furniture is flexible for multiple configurations of space, easy to move and stack</div> <div>N/A) Does not apply.</div>								Most of the furniture is easily reconfigurable.	
9.3	Is the furniture ergonomic and size appropriate for grade level?					5		Comments	1.00 5.00
<div>1) Very unsatisfactory - desk with attached chair combinations too small for grade level</div> <div>2) Unsatisfactory -desk with attached chair combinations</div> <div>3) Average - mix of classrooms with tables/loose chairs and desks with fixed seats</div> <div>4) Good - tables with loose chairs</div> <div>5) Very good - tables with loose chairs that allow students to bounce in seat</div> <div>N/A) Does not apply.</div>									

10 - Environmental Quality		1	2	3	4	5	N/A	23.00	
10.1	How are acoustics in classrooms in general?			3				Comments	1.003.00
1)Recognized word/sound from adjacent classroom/corridor  2) audible sound from adjacent classroom/corridor  3) slight sound from outside room 4) walls to deck insulated only white noise from mechanical system 5) Able to hear quiet speaking from across the room N/A) Does not apply.								The gym and cafeteria have poor acoustics.	
10.2	Is the classroom artificial lighting adequate quality?					5		Comments	1.005.00
1) Very unsatisfactory - sporadic lights work, glare, less than 20 FC 2) Unsatisfactory - 10-19 FC or serious glare 3) Average- 20-29 FC minor glare 4) Good - 30-39 FC and no glare 5) Very good - 40+ FC and no glare N/A) Does not apply.								The classrooms have indirect artificial lighting.	
10.3	Is there access to natural light in classrooms?					5		Comments	1.005.00
1) No learning spaces have natural light 2) 1-25% of learning spaces have natural light or windows are too small to let in light 3) 26-50% of learning spaces have natural light 4) 51-75% of learning spaces have natural light 5) 76-100% of learning spaces have natural light N/A) Does not apply.									

10 - Environmental Quality - Continued							1	2	3	4	5	N/A		
10.4	Is there access to outside views from learning spaces?					5		Comments					1.00	5.00
1) No learning spaces have views 2) 1-25% of learning spaces have views or windows are too small to see out 3) 26-50% of learning spaces have views 4) 51-75% of learning spaces have views 5) 76-100% of learning spaces have views N/A) Does not apply.														
10.5	Does the building have odor or pest problems?					5		Comments					1.00	5.00
1) Very unsatisfactory 2) Unsatisfactory 3) Average 4) Good 5) Very Satisfactory N/A) Does not apply.														

11 - Controllability of Systems		1	2	3	4	5	N/A	11.50	
11.1	Does the classroom thermostat allow for individual control?					5		Comments	0.50 2.50
1) No 5) Yes									
11.2	Are shades provided to control natural light in learning spaces?				4			Comments	1.00 4.00
1) No, windows are covered with boards/paper 2) No, windows have no light control 3) Yes, but poor condition blinds 4) Yes, blinds 5) Blackout shades N/A) Does not apply.									
11.3	What is the quality of lighting controls in the classrooms?					5		Comments	1.00 5.00
1) Single switch only per room 2) Alternating rows switch off 3) Alternating lamps in single fixtures switch off 4) Tri level switching 5) Dimmable N/A) Does not apply.									





Photo 1. Outdoor Area



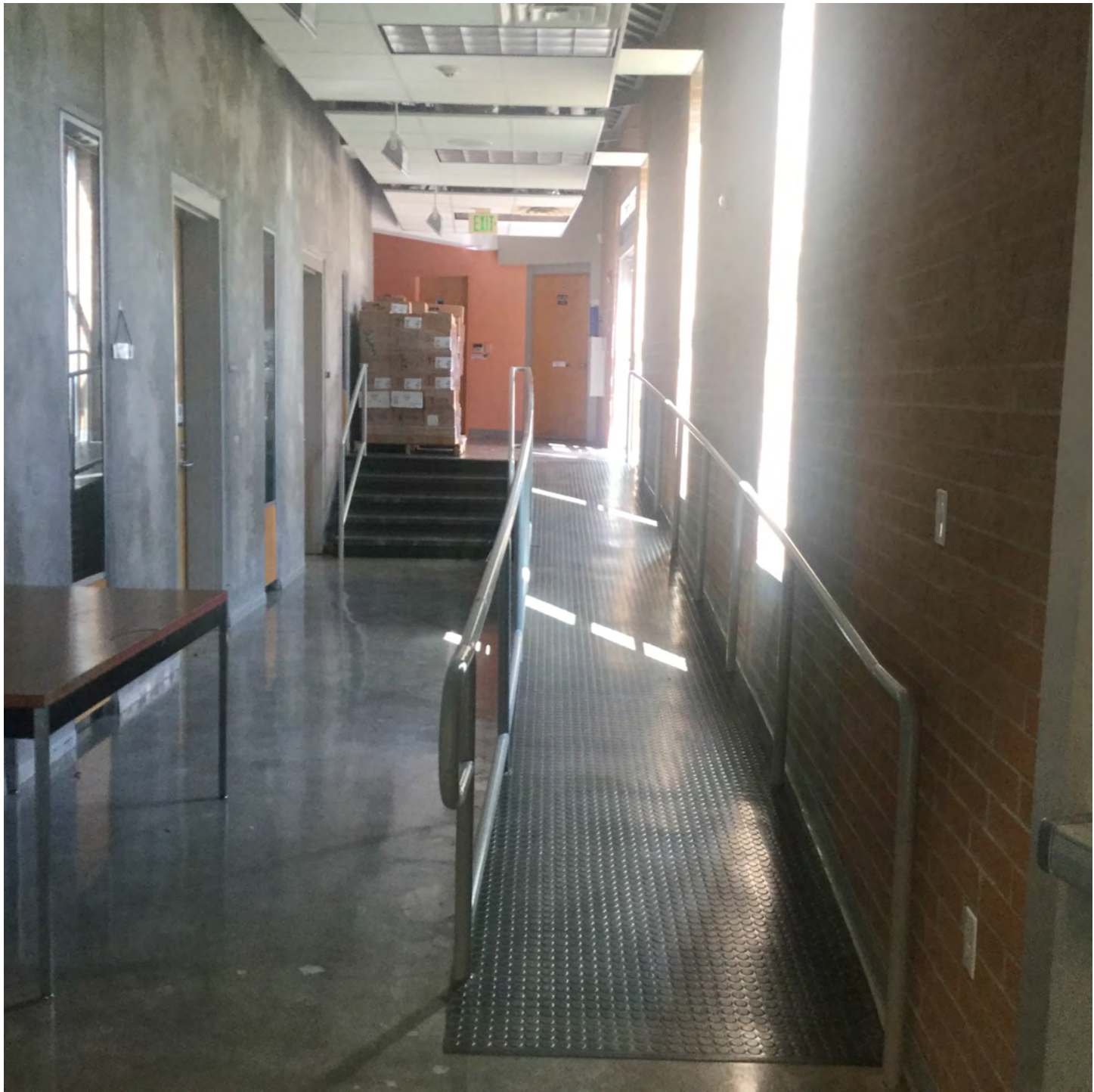


Photo 2. Hallways





Photo 3. Classroom





Photo 4. Gymnasium





Photo 5. Music





Photo 6. Computer Lab





Photo 7. Cafeteria





Photo 8. Flex Space





Photo 9. Library





Photo 10. Furniture