

# Bickerstaff Heath Delgado Acosta LLP

3711 S. MoPac Expressway Building One, Suite 300 Austin, Texas 78746 (512) 472-8021 Fax (512) 320-5638 www.bickerstaff.com



June 6, 2011

*VIA HAND DELIVERY*

Mark Williams, President  
and Board of Trustees  
Austin Independent School District  
1111 West 6<sup>th</sup> Street, Room A250  
Austin, Texas 78703-5399

RE: 2011 Redistricting: Report on Illustrative Plans 1 and 2

Dear Trustees:

We have constructed for your review Illustrative Plans 1 and 2. These plans redistrict the Austin Independent School District's trustee districts, bringing them in balance with the 2010 Census population and demographic data for the District. The plans were constructed within the parameters of the criteria and guidelines adopted by Austin Independent School District's Board of Trustees, and include suggestions made by the trustees. Included with this report is a copy of each Plan and its respective demographic report.

Both Illustrative Plans 1 and 2 substantially comply with the criteria established by the District for redistricting. Our analysis of each Plan's compliance with the respective District criteria is discussed separately below.

## ILLUSTRATIVE PLAN 1

Illustrative Plan 1 constitutes an illustrative plan utilized by the District in demonstrating, during its public input process, how the existing population imbalance among the trustee districts can be corrected in compliance with the criteria adopted by the District.

**Criterion 1: Where possible, easily identifiable geographic boundaries should be followed.**

It is easier for citizens to determine the trustee districts where they live if the district boundaries follow a major street or natural boundary like a river. All trustee districts in Plan 1 follow geographic boundaries, except (a) when the outer boundaries of the District do not follow streets, rivers or other geographic sites, or (b) where the existing trustee district lines do not follow identifiable boundaries. The trustee district territories generally comprise whole voting precincts except for minor deviations which were required under the plan either to keep the

respective trustee districts in balance, to avoid retrogression to predominately minority districts, or to reflect existing boundaries of the trustee districts.

For example, the new boundary between Districts 1 and 3 in the northern part of the District utilizes Interstate 35 as the dividing line between the respective districts. The new boundary between Districts 3, 4 and 5 in the central parts of the District utilizes 35<sup>th</sup> and 38<sup>th</sup> Streets as a dividing line. The new boundary between Districts 5 and 6, as District 5 projects into South Austin, is Lamar Boulevard. Interstate 35, 35<sup>th</sup> and 38<sup>th</sup> Streets and Lamar Boulevard, represent major thoroughfares within the community that are well-recognized by the populace and thus will facilitate an understanding of the plan.

**Criterion 2: Communities of interest should be maintained in a single district, where possible, and attempts should be made to avoid splitting neighborhoods.**

To the extent practicable, where communities of interest were identified, Plan 1 avoids splitting neighborhoods and maintaining communities of interest in a single district. For example, elementary school attendance zones represent the smallest building block of students served by the district. As such, parents and community residents served by the district generally recognize and identify with their particular elementary school and the middle schools and high schools into which these entities ultimately are aggregated.

As the schools with the smallest population, elementary school attendance zones are the smallest scholastic unit in the district. The middle schools and high schools are composed of students from multiple elementary schools. Based on residency, some elementary schools are divided among two or more middle schools and likewise, students from middle schools may (based on residence location) feed into two or more high schools.

To the extent possible, the Plan attempts to keep elementary school attendance zones wholly within a trustee district where election precinct geography allows.

**Criterion 3: To the extent possible, trustee districts should be composed of whole voting precincts.**

Trustee districts in Plan 1 are predominately composed of whole Travis County Election Precincts ("VTDs") which are also denoted in census geography as Voting Tabulation Districts. Some VTDs were split as a result of the redistricting effort in order to balance population and avoid retrogression to minority districts.

There are 171 VTDs either wholly or partially in the school district. The existing plan splits at least twenty (20) VTDs. To the extent that the boundaries of the trustee districts were not reconfigured and thus remained mostly unchanged around the school district, the twenty previously split VTDs remained unaffected by the redistricting exercise. However, Plan 1 required splitting four additional VTDs around the District to achieve the rebalancing.

**Criterion 4: Although it is recognized that existing trustee districts will have to be altered to reflect new population distribution, any districting plan should, to the extent possible, be based on existing districts.**

Although it is always possible to construct plans that differ considerably from the current districting plan, such changes tend to cause voter confusion and interfere with constituent-incumbent relations. Plan 1 is based on the current trustee districts, which remain in relatively the same geographic relationship to each other. Because of the disparities in population distribution over the decade, some trustee district lines had to be moved to balance population. Under Plan 1, only District 2 remains completely unaffected by the redistricting process.

Districts 6 and 7 were substantially over-populated and both had to give up population, resulting in moving lines to accommodate under-populated districts such as Districts 1, 3, 4 and 5. An attempt was made to make the districts as compact as possible, but the substantial population imbalance between the northern and southern halves of the school district required that trustee District 5 be substantially reconfigured in its location. Nonetheless an attempt was made in configuring District 5 to conform to the attendance zone for Austin High School so that the territory of trustee District 5 contains substantially all of the territory of this high school attendance zone and the related elementary and middle schools associated with this portion of the District.

**Criterion 5: Districts must be configured so that they are relatively equal in total population according to the 2010 federal Census. In no event should the total deviation between the largest and the smallest districts exceed ten percent.**

The trustee districts in Plan 1 are relatively equal in total population according to the 2010 federal Census, with a maximum total population deviation of 7.48 percent as compared with the maximum total deviation of 39.84 percent for the current districts.

The specific level at which each trustee district is over- or under-populated from the ideal population size is set out in the chart accompanying the Plan map.

**Criterion 6: The districts should be compact and composed of contiguous territory. Compactness may contain a functional, as well as a geographical dimension.**

The districts in Plan 1 are contiguous and relatively compact. While there are various numerical measures of compactness for the trustee districts none of these should be viewed as either the "best" formula or an absolute measure of compactness. Because of the nature of the changes that were made to the configuration of the territories of the respective districts, it did not seem practical or ultimately useful to apply these tests to the Plan. In any event, these formulas are merely tools that provide a quantitative index that can be used to compare the *relative* compactness of two plans. Your eye is nearly as good a guide as these measures in most cases. Visual inspection of the precincts in Plan 1 compared to those in the existing plan will lead to the conclusion that the boundaries and territories of the districts have not been altered in a fashion which should subject them to criticism that they lack any more "compactness" or "contiguity" than the existing plan.

Compactness can include functional considerations such as (a) the availability of transportation and communication, (b) the existence of common social and economic interest, (c) the ability of districts to relate to each other and (d) the existence of shared interests. A concerted effort was made to keep elementary school attendance zones wholly within a trustee district so that all the affected families in an elementary school have the same trustee to the extent possible. The fact that a trustee district may contain territory from multiple middle school and high school attendance zones allows the trustee to hear from a diversity of constituent interests from around the school district.

**Criterion 7: Consideration may be given to the preservation of incumbent-constituency relations by recognition of the residence of incumbents and their history in representing certain areas.**

All incumbents have been retained in their current trustee districts in Plan 1, maintaining district cores and protecting incumbents from contests with each other.

**Criteria 8 and 9: The plan should be narrowly tailored to avoid retrogression in the position of racial minorities as defined in the Voting Rights Act with respect to their effective exercise of the electoral franchise. The plan should not fragment a geographically compact minority community or pack minority voters in the presence of polarized voting so as to create liability under Section 2 of the Voting Rights Act, 42 U.S.C. § 1973c.**

Plan 1 avoids any substantial retrogression to majority-minority districts or plurality districts with a substantial minority population and does not fragment a geographically compact minority community or pack minority voters. Austin ISD is a community that has a history of electing minority trustees both at-large and from all single-member districts regardless of the demographic makeup of the district. The District comprises a voting age population that is 54.47% Anglo, 31.63% Hispanic, 7.11% African American and 4.95% Asian. The current board of trustees reflects this demographic breakdown. It consists of two at-large trustees (one African-American) and seven elected from single-member districts (two Anglo and 5 Hispanic or African-American trustees).

Plan 1 does not retrogress in that there are currently a majority-minority district and two plurality districts. Plan 1 maintains the majority-minority district and the two plurality districts.

Trustee District 2 is currently a majority-Hispanic district and was not affected by the redistricting changes in Plan 1. It has a current population of 89,056 persons of whom 68.81 percent are Hispanic. It remains unchanged in Plan 1 in any respect.

Trustee District 1 is a plurality district with a substantial African-American and Hispanic population that has historically elected an African-American representative to the board of trustees. The total population of the district is 79,959 and, at -11.98 percent, is the most under-populated trustee district. It is 27.05% voting-age African-American, 46.15 percent voting-age Hispanic and 24.07 percent voting-age non-Hispanic Anglo. In Plan 1 the demographic

percentages for the voting age population are 25.33 percent voting-age African-American, 43.28 percent voting-age Hispanic and 28.33 percent voting age non-Hispanic Anglo. There is no additional African-American population anywhere in the district that could be added to trustee District 1 to enhance the African-American percentage. Another means of maintaining relative African-American voting strength was by under- populating the district. At -3.47 percent, Trustee District 1 is the most under-populated trustee district.

Trustee District 3 is a plurality district with a substantial Hispanic population that has elected a Hispanic who is currently serving on the board of trustees. The total population of the district is 81,071 and, at -10.76 percent, is the second most under-populated trustee district. It is 44.98% voting-age Hispanic, 8.81% voting-age African-American, and 38.65% voting-age non-Hispanic Anglo. In Plan 1 the demographic percentages for the voting-age population are 43.18 percent voting-age Hispanic, 7.67 percent voting-age African-American and 41.31 percent voting-age non-Hispanic Anglo. There is no additional Hispanic population in the vicinity of the district that could be added to trustee District 3 to enhance the Hispanic percentage without unduly retrogressing trustee District 1. Another means of maintaining relative Hispanic voting strength was by under- populating the district. At -3.32 percent, Trustee District 3 is the second most under-populated trustee district.

Hispanic trustees are also elected from Districts 4 and 6, which are predominately composed of non-Hispanic Anglo population. The relative voting age Hispanic percentages in the two respective trustee districts are slightly increased under Plan 1.

## **ILLUSTRATIVE PLAN 2**

Illustrative Plan 2 constitutes an alternative illustrative plan utilized by the District in demonstrating, during its public input process, how the existing population imbalance among the trustee districts can be corrected in compliance with the criteria adopted by the District. The specific level at which each trustee district is over or under populated from the ideal population size is set out in the chart accompanying the Plan map.

Plan 2 is identical to Plan 1 except in respect to the configuration of Districts 5 and 7. Plan 2 also complies with the criteria and the changes do not affect the retrogression analysis.

Districts 6 and 7 were substantially over-populated and both had to give up population, resulting in moving lines to accommodate under-populated districts such as Districts 1, 3, 4 and 5. An attempt was made to make the districts as compact as possible, but the substantial population imbalance between the northern and southern halves of the school district required that trustee District 5 be substantially reconfigured in its location. In this plan, an attempt was made in configuring District 5 to include territory from a number of high school attendance zones in the district.

Trustee districts in Plan 2 are predominately composed of whole Travis County Election Precincts which are also denoted in census geography as Voting Tabulation Districts or VTDs. Some VTDs were split as a result of the redistricting effort in order to balance population and avoid retrogression to minority districts.

June 6, 2011

Page 6

As stated above, there are 171 VTDs either wholly or partially in the school district. The existing plan currently splits at least twenty VTDs. To the extent that the boundaries of the trustee districts were not reconfigured and thus remained mostly unchanged around the school district, the twenty previously split VTDs remain unaffected by the redistricting exercise. Plan 2 required splitting seven additional VTDs around the District to achieve a rebalance of the population between the districts.

We hope this analysis has been helpful. We look forward to working with you as you refine this plan and consider other plans. Please do not hesitate to call us if you have questions.

Sincerely,

A handwritten signature in cursive script that reads "Cindy Crosby".

for

David Méndez

Enclosures

cc: Dr. Meria Carstarphen, Superintendent  
(with enclosures)

Mel Waxler  
(with enclosures)







# Austin ISD

## Initial Assessment - Benchmark

### 2010 Census Total and Voting Age Population

| District      | Persons        | Deviation | Hispanic %<br>of Total<br>Population | Non-Hispanic<br>Anglo %<br>of Total<br>Population | Non-Hispanic<br>Black %<br>of Total<br>Population | Non-Hispanic<br>Asian %<br>of Total<br>Population | Non-Hispanic<br>Other %<br>of Total<br>Population |
|---------------|----------------|-----------|--------------------------------------|---|---|---|---|
| 1             | 79,959         | -11.98%   | 52.90%                               | 18.86%  | 25.54%  | 1.05%   | 1.64%   |
| 2             | 89,056         | -1.97%    | 68.81%                               | 20.91%  | 7.32%   | 1.37%   | 1.59%   |
| 3             | 81,071         | -10.76%   | 51.03%                               | 32.71%  | 8.98%   | 5.32%   | 1.95%   |
| 4             | 79,935         | -12.01%   | 12.03%                               | 77.28%  | 2.27%   | 6.19%   | 2.23%   |
| 5             | 88,111         | -3.01%    | 14.87%                               | 69.43%  | 3.14%   | 9.96%   | 2.60%   |
| 6             | 101,670        | 11.91%    | 38.78%                               | 52.53%  | 4.36%   | 2.11%   | 2.22%   |
| 7             | 116,129        | 27.83%    | 21.72%                               | 67.10%  | 2.84%   | 5.93%   | 2.41%   |
| <b>Totals</b> | <b>635,931</b> |           | <b>36.53%</b>                        | <b>49.46%</b>                                     | <b>7.32%</b>                                      | <b>4.58%</b>                                      | <b>2.11%</b>                                      |

Ideal Size = 635,931 / 7 = 90,847 per district.

Total Maximum Deviation = 27.83% - (-12.01%) = 39.84%

The total population of the District was adjusted by removing 182 persons located in blocks identified as the Texas State Schools for the Deaf and Blind

Some percentages may be subject to rounding error.

| District      | Total VAP*     |  | Hispanic %<br>of Total VAP | Non-Hispanic<br>Anglo %<br>of Total VAP | Non-Hispanic<br>Black %<br>of Total VAP | Non-Hispanic<br>Asian %<br>of Total VAP | Non-Hispanic<br>Other %<br>of Total VAP |
|---------------|----------------|--|----------------------------|---|---|---|---|
| 1             | 57,281         |  | 46.15%                     | 24.07%                                  | 27.05%                                  | 1.23%                                   | 1.50%                                   |
| 2             | 64,458         |  | 62.91%                     | 26.52%                                  | 7.45%                                   | 1.58%                                   | 1.54%                                   |
| 3             | 60,879         |  | 44.98%                     | 38.65%                                  | 8.81%                                   | 5.81%                                   | 1.74%                                   |
| 4             | 66,980         |  | 11.16%                     | 78.52%                                  | 2.24%                                   | 6.28%                                   | 1.80%                                   |
| 5             | 79,687         |  | 14.27%                     | 69.62%                                  | 3.17%                                   | 10.55%                                  | 2.38%                                   |
| 6             | 81,753         |  | 33.66%                     | 58.13%                                  | 4.04%                                   | 2.20%                                   | 1.97%                                   |
| 7             | 87,984         |  | 19.45%                     | 70.22%                                  | 2.82%                                   | 5.72%                                   | 1.80%                                   |
| <b>Totals</b> | <b>499,022</b> |  | <b>31.63%</b>              | <b>54.47%</b>                           | <b>7.11%</b>                            | <b>4.95%</b>                            | <b>1.84%</b>                            |

\*Voting Age Population

The total population of the District was adjusted by removing 182 persons located in blocks identified as the Texas State Schools for the Deaf and Blind

Some percentages may be subject to rounding error.

3/25/2011



**Austin ISD**  
**Initial Assessment - Benchmark**  
2010 Census Total and Voting Age Population

| District      | Persons        | Ideal Size | Deviation | Hispanic       | % of Total Hispanic Population | Anglo          | % of Total Anglo Population | Black         | % of Total Black Population | American Indian | % of Total American Indian Population | Asian         | % of Total Asian Population | Hawaiian-Pacific Islander | % of Total Hawaiian-Pacific Islander Population | Other        | % of Total Other Population | Two or More   | % of Total Two or More Population |
|---------------|----------------|------------|-----------|----------------|--------------------------------|----------------|-----------------------------|---------------|-----------------------------|-----------------|---------------------------------------|---------------|-----------------------------|---------------------------|---|--------------|-----------------------------|---------------|-----------------------------------|
| 1             | 79,959         | 90,847     | -11.98%   | 42,296         | 52.90%                         | 15,082         | 18.86%                      | 20,425        | 25.54%                      | 152             | 0.19%                                 | 841           | 1.05%                       | 37                        | 0.05%   | 107          | 0.13%                       | 1,019         | 1.27%                             |
| 2             | 89,056         | 90,847     | -1.97%    | 61,283         | 68.81%                         | 18,619         | 20.91%                      | 6,520         | 7.32%                       | 242             | 0.27%                                 | 1,216         | 1.37%                       | 44                        | 0.05%   | 181          | 0.20%                       | 951           | 1.07%                             |
| 3             | 81,071         | 90,847     | -10.76%   | 41,374         | 51.03%                         | 26,520         | 32.71%                      | 7,282         | 8.98%                       | 161             | 0.20%                                 | 4,314         | 5.32%                       | 31                        | 0.04%   | 151          | 0.19%                       | 1,238         | 1.53%                             |
| 4             | 79,935         | 90,847     | -12.01%   | 9,618          | 12.03%                         | 61,771         | 77.28%                      | 1,814         | 2.27%                       | 199             | 0.25%                                 | 4,947         | 6.19%                       | 34                        | 0.04%   | 111          | 0.14%                       | 1,441         | 1.80%                             |
| 5             | 88,111         | 90,847     | -3.01%    | 13,102         | 14.87%                         | 61,177         | 69.43%                      | 2,763         | 3.14%                       | 205             | 0.23%                                 | 8,780         | 9.96%                       | 34                        | 0.04%   | 156          | 0.18%                       | 1,894         | 2.15%                             |
| 6             | 101,670        | 90,847     | 11.91%    | 39,425         | 38.78%                         | 53,409         | 52.53%                      | 4,433         | 4.36%                       | 325             | 0.32%                                 | 2,147         | 2.11%                       | 41                        | 0.04%   | 178          | 0.18%                       | 1,712         | 1.68%                             |
| 7             | 116,129        | 90,847     | 27.83%    | 25,229         | 21.72%                         | 77,923         | 67.10%                      | 3,296         | 2.84%                       | 333             | 0.29%                                 | 6,885         | 5.93%                       | 93                        | 0.08%   | 246          | 0.21%                       | 2,124         | 1.83%                             |
| <b>Totals</b> | <b>635,931</b> |            |           | <b>232,327</b> | <b>36.53%</b>                  | <b>314,501</b> | <b>49.46%</b>               | <b>46,533</b> | <b>7.32%</b>                | <b>1,617</b>    | <b>0.25%</b>                          | <b>29,130</b> | <b>4.58%</b>                | <b>314</b>                | <b>0.05%</b>                                    | <b>1,130</b> | <b>0.18%</b>                | <b>10,379</b> | <b>1.63%</b>                      |

Ideal Size = 635,931 / 7 = 90,847 per district.

The total population of the District was adjusted by removing 182 persons located in blocks identified as the Texas State Schools for the Deaf and Blind

Some percentages may be subject to rounding error.

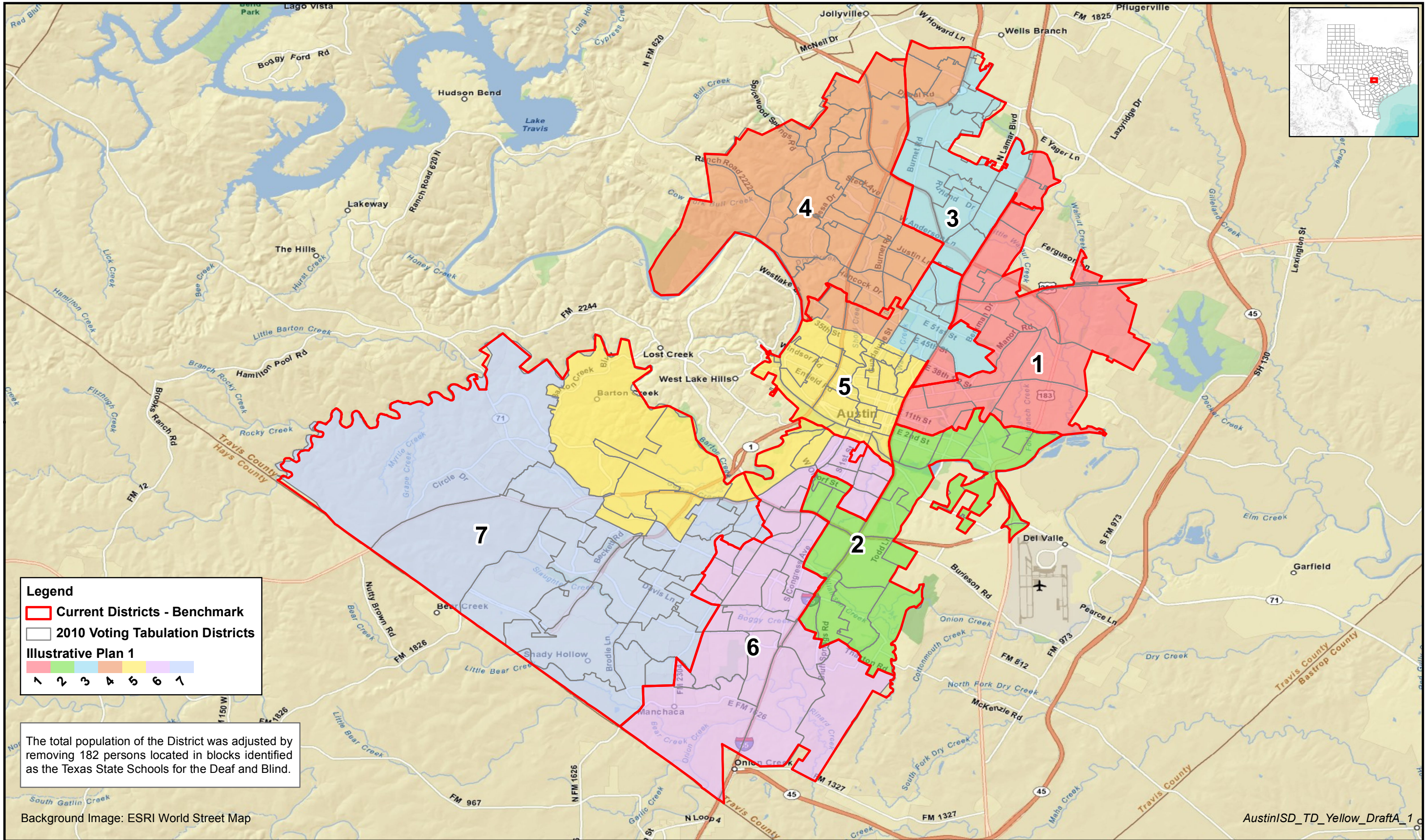
| District      | Total VAP*     |  |  | Hispanic VAP   | % of Total Hispanic VAP | Anglo VAP      | % of Total Anglo VAP | Black VAP     | % of Total Black VAP | American Indian VAP | % of Total American Indian VAP | Asian VAP     | % of Total Asian VAP | Hawaiian-Pacific Islander VAP | % of Total Hawaiian-Pacific Islander VAP | Other VAP  | % of Total Other VAP | Two or More VAP | % of Total Two or More VAP |
|---------------|----------------|--|--|----------------|-------------------------|----------------|----------------------|---------------|----------------------|---------------------|--------------------------------|---------------|----------------------|-------------------------------|--|------------|----------------------|-----------------|----------------------------|
| 1             | 57,281         |  |  | 26,435         | 46.15%                  | 13,787         | 24.07%               | 15,493        | 27.05%               | 127                 | 0.22%                          | 707           | 1.23%                | 30                            | 0.05%                                    | 71         | 0.12%                | 631             | 1.10%                      |
| 2             | 64,458         |  |  | 40,549         | 62.91%                  | 17,096         | 26.52%               | 4,801         | 7.45%                | 201                 | 0.31%                          | 1,020         | 1.58%                | 33                            | 0.05%                                    | 106        | 0.16%                | 652             | 1.01%                      |
| 3             | 60,879         |  |  | 27,381         | 44.98%                  | 23,532         | 38.65%               | 5,365         | 8.81%                | 132                 | 0.22%                          | 3,540         | 5.81%                | 30                            | 0.05%                                    | 100        | 0.16%                | 799             | 1.31%                      |
| 4             | 66,980         |  |  | 7,475          | 11.16%                  | 52,594         | 78.52%               | 1,503         | 2.24%                | 171                 | 0.26%                          | 4,204         | 6.28%                | 32                            | 0.05%                                    | 85         | 0.13%                | 916             | 1.37%                      |
| 5             | 79,687         |  |  | 11,375         | 14.27%                  | 55,482         | 69.62%               | 2,530         | 3.17%                | 188                 | 0.24%                          | 8,406         | 10.55%               | 34                            | 0.04%                                    | 130        | 0.16%                | 1,542           | 1.94%                      |
| 6             | 81,753         |  |  | 27,517         | 33.66%                  | 47,526         | 58.13%               | 3,300         | 4.04%                | 284                 | 0.35%                          | 1,801         | 2.20%                | 36                            | 0.04%                                    | 139        | 0.17%                | 1,150           | 1.41%                      |
| 7             | 87,984         |  |  | 17,110         | 19.45%                  | 61,781         | 70.22%               | 2,482         | 2.82%                | 264                 | 0.30%                          | 5,029         | 5.72%                | 68                            | 0.08%                                    | 149        | 0.17%                | 1,101           | 1.25%                      |
| <b>Totals</b> | <b>499,022</b> |  |  | <b>157,842</b> | <b>31.63%</b>           | <b>271,798</b> | <b>54.47%</b>        | <b>35,474</b> | <b>7.11%</b>         | <b>1,367</b>        | <b>0.27%</b>                   | <b>24,707</b> | <b>4.95%</b>         | <b>263</b>                    | <b>0.05%</b>                             | <b>780</b> | <b>0.16%</b>         | <b>6,791</b>    | <b>1.36%</b>               |

\*Voting Age Population

The total population of the District was adjusted by removing 182 persons located in blocks identified as the Texas State Schools for the Deaf and Blind

Some percentages may be subject to rounding error.







# Austin Independent School District

## Illustrative Plan 1

### Summary 2010 Census Total and Voting Age Population

| District      | Persons        | Deviation | Hispanic %<br>of Total<br>Population | Non-Hispanic<br>Anglo %<br>of Total<br>Population | Non-Hispanic<br>Black %<br>of Total<br>Population | Non-Hispanic<br>Asian %<br>of Total<br>Population | Non-Hispanic<br>Other %<br>of Total<br>Population |
|---------------|----------------|-----------|--------------------------------------|---|---|---|---|
| 1             | 87,696         | -3.47%    | 50.07%                               | 22.61%  | 24.27%  | 1.32%   | 1.73%   |
| 2             | 89,056         | -1.97%    | 68.81%                               | 20.91%  | 7.32%   | 1.37%   | 1.59%   |
| 3             | 87,827         | -3.32%    | 49.48%                               | 35.10%  | 7.94%   | 5.46%   | 2.02%   |
| 4             | 94,490         | 4.01%     | 12.18%                               | 77.12%  | 2.48%   | 5.97%   | 2.25%   |
| 5             | 90,416         | -0.47%    | 13.57%                               | 71.22%  | 2.55%   | 10.16%  | 2.50%   |
| 6             | 93,103         | 2.48%     | 41.23%                               | 49.79%  | 4.61%   | 2.17%   | 2.20%   |
| 7             | 93,343         | 2.75%     | 23.05%                               | 66.00%  | 3.01%   | 5.48%   | 2.46%   |
| <b>Totals</b> | <b>635,931</b> |           | <b>36.53%</b>                        | <b>49.46%</b>                                     | <b>7.32%</b>                                      | <b>4.58%</b>                                      | <b>2.11%</b>                                      |

Ideal Size = 635,931 / 7 = 90,847 per district.

Total Maximum Deviation = 4.01% - (-3.47%) = 7.48%

Some percentages may be subject to rounding error.

| District      | Total VAP*     |  | Hispanic %<br>of Total VAP | Non-Hispanic<br>Anglo %<br>of Total VAP | Non-Hispanic<br>Black %<br>of Total VAP | Non-Hispanic<br>Asian %<br>of Total VAP | Non-Hispanic<br>Other %<br>of Total VAP |
|---------------|----------------|--|----------------------------|---|---|---|---|
| 1             | 63,836         |  | 43.28%                     | 28.33%                                  | 25.33%                                  | 1.51%                                   | 1.55%                                   |
| 2             | 64,458         |  | 62.91%                     | 26.52%                                  | 7.45%                                   | 1.58%                                   | 1.54%                                   |
| 3             | 67,471         |  | 43.18%                     | 41.31%                                  | 7.67%                                   | 6.01%                                   | 1.84%                                   |
| 4             | 79,205         |  | 11.28%                     | 78.39%                                  | 2.46%                                   | 6.07%                                   | 1.80%                                   |
| 5             | 79,765         |  | 13.13%                     | 71.31%                                  | 2.60%                                   | 10.68%                                  | 2.29%                                   |
| 6             | 74,439         |  | 35.86%                     | 55.61%                                  | 4.29%                                   | 2.27%                                   | 1.96%                                   |
| 7             | 69,848         |  | 20.67%                     | 69.26%                                  | 3.03%                                   | 5.23%                                   | 1.81%                                   |
| <b>Totals</b> | <b>499,022</b> |  | <b>31.63%</b>              | <b>54.47%</b>                           | <b>7.11%</b>                            | <b>4.95%</b>                            | <b>1.84%</b>                            |

\*Voting Age Population

Some percentages may be subject to rounding error.



# Austin Independent School District

## Illustrative Plan 1

### Detailed 2010 Census Total and Voting Age Population

| District      | Persons        | Ideal Size | Deviation | Hispanic       | % of Total Hispanic Population | Anglo          | % of Total Anglo Population | Black         | % of Total Black Population | American Indian | % of Total American Indian Population | Asian         | % of Total Asian Population | Hawaiian-Pacific Islander | % of Total Hawaiian-Pacific Islander Population | Other        | % of Total Other Population | Two or More   | % of Total Two or More Population |
|---------------|----------------|------------|-----------|----------------|--------------------------------|----------------|-----------------------------|---------------|-----------------------------|-----------------|---------------------------------------|---------------|-----------------------------|---------------------------|---|--------------|-----------------------------|---------------|-----------------------------------|
| 1             | 87,696         | 90,847     | -3.47%    | 43,910         | 50.07%                         | 19,830         | 22.61%                      | 21,284        | 24.27%                      | 164             | 0.19%                                 | 1,156         | 1.32%                       | 38                        | 0.04%   | 130          | 0.15%                       | 1,184         | 1.35%                             |
| 2             | 89,056         | 90,847     | -1.97%    | 61,283         | 68.81%                         | 18,619         | 20.91%                      | 6,520         | 7.32%                       | 242             | 0.27%                                 | 1,216         | 1.37%                       | 44                        | 0.05%   | 181          | 0.20%                       | 951           | 1.07%                             |
| 3             | 87,827         | 90,847     | -3.32%    | 43,454         | 49.48%                         | 30,823         | 35.10%                      | 6,974         | 7.94%                       | 194             | 0.22%                                 | 4,799         | 5.46%                       | 37                        | 0.04%   | 153          | 0.17%                       | 1,393         | 1.59%                             |
| 4             | 94,490         | 90,847     | 4.01%     | 11,512         | 12.18%                         | 72,868         | 77.12%                      | 2,345         | 2.48%                       | 226             | 0.24%                                 | 5,642         | 5.97%                       | 38                        | 0.04%   | 141          | 0.15%                       | 1,718         | 1.82%                             |
| 5             | 90,416         | 90,847     | -0.47%    | 12,265         | 13.57%                         | 64,391         | 71.22%                      | 2,310         | 2.55%                       | 222             | 0.25%                                 | 9,186         | 10.16%                      | 37                        | 0.04%   | 168          | 0.19%                       | 1,837         | 2.03%                             |
| 6             | 93,103         | 90,847     | 2.48%     | 38,385         | 41.23%                         | 46,360         | 49.79%                      | 4,293         | 4.61%                       | 301             | 0.32%                                 | 2,017         | 2.17%                       | 40                        | 0.04%   | 155          | 0.17%                       | 1,552         | 1.67%                             |
| 7             | 93,343         | 90,847     | 2.75%     | 21,518         | 23.05%                         | 61,610         | 66.00%                      | 2,807         | 3.01%                       | 268             | 0.29%                                 | 5,114         | 5.48%                       | 80                        | 0.09%   | 202          | 0.22%                       | 1,744         | 1.87%                             |
| <b>Totals</b> | <b>635,931</b> |            |           | <b>232,327</b> | <b>36.53%</b>                  | <b>314,501</b> | <b>49.46%</b>               | <b>46,533</b> | <b>7.32%</b>                | <b>1,617</b>    | <b>0.25%</b>                          | <b>29,130</b> | <b>4.58%</b>                | <b>314</b>                | <b>0.05%</b>                                    | <b>1,130</b> | <b>0.18%</b>                | <b>10,379</b> | <b>1.63%</b>                      |

Ideal Size = 635,931 / 7 = 90,847 per district.

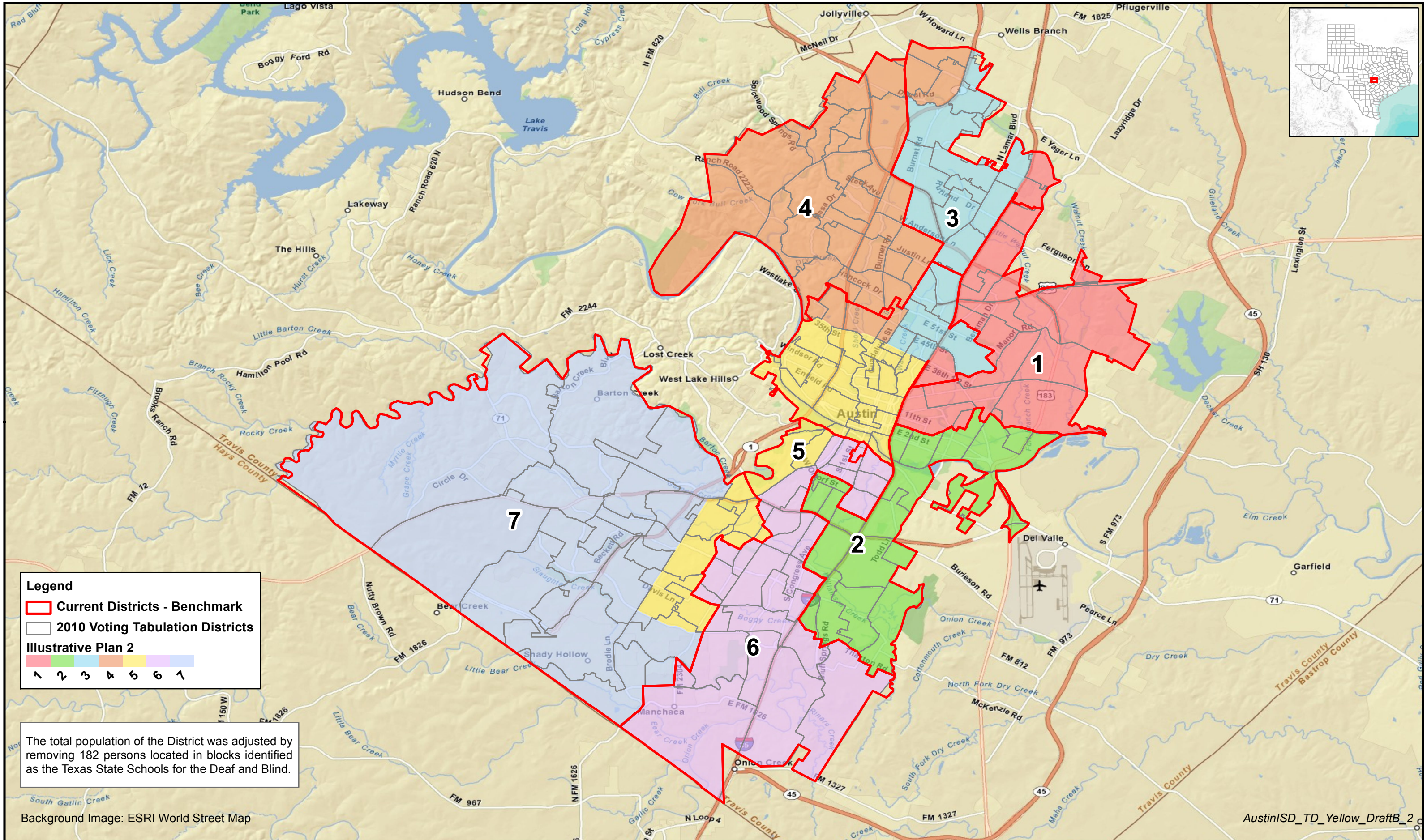
Some percentages may be subject to rounding error.

| District      | Total VAP*     |  | Hispanic VAP   | % of Total Hispanic VAP | Anglo VAP      | % of Total Anglo VAP | Black VAP     | % of Total Black VAP | American Indian VAP | % of Total American Indian VAP | Asian VAP     | % of Total Asian VAP | Hawaiian-Pacific Islander VAP | % of Total Hawaiian-Pacific Islander VAP | Other VAP  | % of Total Other VAP | Two or More VAP | % of Total Two or More VAP |
|---------------|----------------|--|----------------|-------------------------|----------------|----------------------|---------------|----------------------|---------------------|--------------------------------|---------------|----------------------|-------------------------------|--|------------|----------------------|-----------------|----------------------------|
| 1             | 63,836         |  | 27,628         | 43.28%                  | 18,084         | 28.33%               | 16,170        | 25.33%               | 138                 | 0.22%                          | 963           | 1.51%                | 31                            | 0.05%                                    | 85         | 0.13%                | 737             | 1.15%                      |
| 2             | 64,458         |  | 40,549         | 62.91%                  | 17,096         | 26.52%               | 4,801         | 7.45%                | 201                 | 0.31%                          | 1,020         | 1.58%                | 33                            | 0.05%                                    | 106        | 0.16%                | 652             | 1.01%                      |
| 3             | 67,471         |  | 29,133         | 43.18%                  | 27,869         | 41.31%               | 5,172         | 7.67%                | 161                 | 0.24%                          | 4,054         | 6.01%                | 36                            | 0.05%                                    | 107        | 0.16%                | 939             | 1.39%                      |
| 4             | 79,205         |  | 8,933          | 11.28%                  | 62,091         | 78.39%               | 1,946         | 2.46%                | 196                 | 0.25%                          | 4,807         | 6.07%                | 36                            | 0.05%                                    | 106        | 0.13%                | 1,090           | 1.38%                      |
| 5             | 79,765         |  | 10,470         | 13.13%                  | 56,881         | 71.31%               | 2,076         | 2.60%                | 198                 | 0.25%                          | 8,515         | 10.68%               | 34                            | 0.04%                                    | 134        | 0.17%                | 1,457           | 1.83%                      |
| 6             | 74,439         |  | 26,694         | 35.86%                  | 41,399         | 55.61%               | 3,195         | 4.29%                | 262                 | 0.35%                          | 1,693         | 2.27%                | 35                            | 0.05%                                    | 120        | 0.16%                | 1,041           | 1.40%                      |
| 7             | 69,848         |  | 14,435         | 20.67%                  | 48,378         | 69.26%               | 2,114         | 3.03%                | 211                 | 0.30%                          | 3,655         | 5.23%                | 58                            | 0.08%                                    | 122        | 0.17%                | 875             | 1.25%                      |
| <b>Totals</b> | <b>499,022</b> |  | <b>157,842</b> | <b>31.63%</b>           | <b>271,798</b> | <b>54.47%</b>        | <b>35,474</b> | <b>7.11%</b>         | <b>1,367</b>        | <b>0.27%</b>                   | <b>24,707</b> | <b>4.95%</b>         | <b>263</b>                    | <b>0.05%</b>                             | <b>780</b> | <b>0.16%</b>         | <b>6,791</b>    | <b>1.36%</b>               |

\*Voting Age Population

Some percentages may be subject to rounding error.







# Austin Independent School District

## Illustrative Plan 2

### Summary 2010 Census Total and Voting Age Population

| District      | Persons        | Deviation | Hispanic %<br>of Total<br>Population | Non-Hispanic<br>Anglo %<br>of Total<br>Population | Non-Hispanic<br>Black %<br>of Total<br>Population | Non-Hispanic<br>Asian %<br>of Total<br>Population | Non-Hispanic<br>Other %<br>of Total<br>Population |
|---------------|----------------|-----------|--------------------------------------|---|---|---|---|
| 1             | 87,696         | -3.47%    | 50.07%                               | 22.61%  | 24.27%  | 1.32%   | 1.73%   |
| 2             | 89,056         | -1.97%    | 68.81%                               | 20.91%  | 7.32%   | 1.37%   | 1.59%   |
| 3             | 87,827         | -3.32%    | 49.48%                               | 35.10%  | 7.94%   | 5.46%   | 2.02%   |
| 4             | 94,490         | 4.01%     | 12.18%                               | 77.12%  | 2.48%   | 5.97%   | 2.25%   |
| 5             | 91,136         | 0.32%     | 17.78%                               | 67.79%  | 3.05%   | 8.81%   | 2.57%   |
| 6             | 93,103         | 2.48%     | 41.23%                               | 49.79%  | 4.61%   | 2.17%   | 2.20%   |
| 7             | 92,623         | 1.95%     | 18.98%                               | 69.34%  | 2.52%   | 6.77%   | 2.40%   |
| <b>Totals</b> | <b>635,931</b> |           | <b>36.53%</b>                        | <b>49.46%</b>                                     | <b>7.32%</b>                                      | <b>4.58%</b>                                      | <b>2.11%</b>                                      |

Ideal Size = 635,931 / 7 = 90,847 per district.

Total Maximum Deviation = 4.01% - (-3.47%) = 7.48%

Some percentages may be subject to rounding error.

| District      | Total VAP*     |  | Hispanic %<br>of Total VAP | Non-Hispanic<br>Anglo %<br>of Total VAP | Non-Hispanic<br>Black %<br>of Total VAP | Non-Hispanic<br>Asian %<br>of Total VAP | Non-Hispanic<br>Other %<br>of Total VAP |
|---------------|----------------|--|----------------------------|---|---|---|---|
| 1             | 63,836         |  | 43.28%                     | 28.33%                                  | 25.33%                                  | 1.51%                                   | 1.55%                                   |
| 2             | 64,458         |  | 62.91%                     | 26.52%                                  | 7.45%                                   | 1.58%                                   | 1.54%                                   |
| 3             | 67,471         |  | 43.18%                     | 41.31%                                  | 7.67%                                   | 6.01%                                   | 1.84%                                   |
| 4             | 79,205         |  | 11.28%                     | 78.39%                                  | 2.46%                                   | 6.07%                                   | 1.80%                                   |
| 5             | 80,498         |  | 16.29%                     | 68.82%                                  | 3.04%                                   | 9.51%                                   | 2.35%                                   |
| 6             | 74,439         |  | 35.86%                     | 55.61%                                  | 4.29%                                   | 2.27%                                   | 1.96%                                   |
| 7             | 69,115         |  | 17.06%                     | 72.14%                                  | 2.53%                                   | 6.54%                                   | 1.73%                                   |
| <b>Totals</b> | <b>499,022</b> |  | <b>31.63%</b>              | <b>54.47%</b>                           | <b>7.11%</b>                            | <b>4.95%</b>                            | <b>1.84%</b>                            |

\*Voting Age Population

Some percentages may be subject to rounding error.



# Austin Independent School District

## Illustrative Plan 2

### Detailed 2010 Census Total and Voting Age Population

| District      | Persons        | Ideal Size | Deviation | Hispanic       | % of Total Hispanic Population | Anglo          | % of Total Anglo Population | Black         | % of Total Black Population | American Indian | % of Total American Indian Population | Asian         | % of Total Asian Population | Hawaiian-Pacific Islander | % of Total Hawaiian-Pacific Islander Population | Other        | % of Total Other Population | Two or More   | % of Total Two or More Population |
|---------------|----------------|------------|-----------|----------------|--------------------------------|----------------|-----------------------------|---------------|-----------------------------|-----------------|---------------------------------------|---------------|-----------------------------|---------------------------|---|--------------|-----------------------------|---------------|-----------------------------------|
| 1             | 87,696         | 90,847     | -3.47%    | 43,910         | 50.07%                         | 19,830         | 22.61%                      | 21,284        | 24.27%                      | 164             | 0.19%                                 | 1,156         | 1.32%                       | 38                        | 0.04%   | 130          | 0.15%                       | 1,184         | 1.35%                             |
| 2             | 89,056         | 90,847     | -1.97%    | 61,283         | 68.81%                         | 18,619         | 20.91%                      | 6,520         | 7.32%                       | 242             | 0.27%                                 | 1,216         | 1.37%                       | 44                        | 0.05%   | 181          | 0.20%                       | 951           | 1.07%                             |
| 3             | 87,827         | 90,847     | -3.32%    | 43,454         | 49.48%                         | 30,823         | 35.10%                      | 6,974         | 7.94%                       | 194             | 0.22%                                 | 4,799         | 5.46%                       | 37                        | 0.04%   | 153          | 0.17%                       | 1,393         | 1.59%                             |
| 4             | 94,490         | 90,847     | 4.01%     | 11,512         | 12.18%                         | 72,868         | 77.12%                      | 2,345         | 2.48%                       | 226             | 0.24%                                 | 5,642         | 5.97%                       | 38                        | 0.04%   | 141          | 0.15%                       | 1,718         | 1.82%                             |
| 5             | 91,136         | 90,847     | 0.32%     | 16,206         | 17.78%                         | 61,777         | 67.79%                      | 2,783         | 3.05%                       | 227             | 0.25%                                 | 8,032         | 8.81%                       | 37                        | 0.04%   | 182          | 0.20%                       | 1,892         | 2.08%                             |
| 6             | 93,103         | 90,847     | 2.48%     | 38,385         | 41.23%                         | 46,360         | 49.79%                      | 4,293         | 4.61%                       | 301             | 0.32%                                 | 2,017         | 2.17%                       | 40                        | 0.04%   | 155          | 0.17%                       | 1,552         | 1.67%                             |
| 7             | 92,623         | 90,847     | 1.95%     | 17,577         | 18.98%                         | 64,224         | 69.34%                      | 2,334         | 2.52%                       | 263             | 0.28%                                 | 6,268         | 6.77%                       | 80                        | 0.09%   | 188          | 0.20%                       | 1,689         | 1.82%                             |
| <b>Totals</b> | <b>635,931</b> |            |           | <b>232,327</b> | <b>36.53%</b>                  | <b>314,501</b> | <b>49.46%</b>               | <b>46,533</b> | <b>7.32%</b>                | <b>1,617</b>    | <b>0.25%</b>                          | <b>29,130</b> | <b>4.58%</b>                | <b>314</b>                | <b>0.05%</b>                                    | <b>1,130</b> | <b>0.18%</b>                | <b>10,379</b> | <b>1.63%</b>                      |

Ideal Size = 635,931 / 7 = 90,847 per district.

Some percentages may be subject to rounding error.

| District      | Total VAP*     |  |  | Hispanic VAP   | % of Total Hispanic VAP | Anglo VAP      | % of Total Anglo VAP | Black VAP     | % of Total Black VAP | American Indian VAP | % of Total American Indian VAP | Asian VAP     | % of Total Asian VAP | Hawaiian-Pacific Islander VAP | % of Total Hawaiian-Pacific Islander VAP | Other VAP  | % of Total Other VAP | Two or More VAP | % of Total Two or More VAP |
|---------------|----------------|--|--|----------------|-------------------------|----------------|----------------------|---------------|----------------------|---------------------|--------------------------------|---------------|----------------------|-------------------------------|--|------------|----------------------|-----------------|----------------------------|
| 1             | 63,836         |  |  | 27,628         | 43.28%                  | 18,084         | 28.33%               | 16,170        | 25.33%               | 138                 | 0.22%                          | 963           | 1.51%                | 31                            | 0.05%                                    | 85         | 0.13%                | 737             | 1.15%                      |
| 2             | 64,458         |  |  | 40,549         | 62.91%                  | 17,096         | 26.52%               | 4,801         | 7.45%                | 201                 | 0.31%                          | 1,020         | 1.58%                | 33                            | 0.05%                                    | 106        | 0.16%                | 652             | 1.01%                      |
| 3             | 67,471         |  |  | 29,133         | 43.18%                  | 27,869         | 41.31%               | 5,172         | 7.67%                | 161                 | 0.24%                          | 4,054         | 6.01%                | 36                            | 0.05%                                    | 107        | 0.16%                | 939             | 1.39%                      |
| 4             | 79,205         |  |  | 8,933          | 11.28%                  | 62,091         | 78.39%               | 1,946         | 2.46%                | 196                 | 0.25%                          | 4,807         | 6.07%                | 36                            | 0.05%                                    | 106        | 0.13%                | 1,090           | 1.38%                      |
| 5             | 80,498         |  |  | 13,111         | 16.29%                  | 55,400         | 68.82%               | 2,444         | 3.04%                | 207                 | 0.26%                          | 7,652         | 9.51%                | 35                            | 0.04%                                    | 144        | 0.18%                | 1,505           | 1.87%                      |
| 6             | 74,439         |  |  | 26,694         | 35.86%                  | 41,399         | 55.61%               | 3,195         | 4.29%                | 262                 | 0.35%                          | 1,693         | 2.27%                | 35                            | 0.05%                                    | 120        | 0.16%                | 1,041           | 1.40%                      |
| 7             | 69,115         |  |  | 11,794         | 17.06%                  | 49,859         | 72.14%               | 1,746         | 2.53%                | 202                 | 0.29%                          | 4,518         | 6.54%                | 57                            | 0.08%                                    | 112        | 0.16%                | 827             | 1.20%                      |
| <b>Totals</b> | <b>499,022</b> |  |  | <b>157,842</b> | <b>31.63%</b>           | <b>271,798</b> | <b>54.47%</b>        | <b>35,474</b> | <b>7.11%</b>         | <b>1,367</b>        | <b>0.27%</b>                   | <b>24,707</b> | <b>4.95%</b>         | <b>263</b>                    | <b>0.05%</b>                             | <b>780</b> | <b>0.16%</b>         | <b>6,791</b>    | <b>1.36%</b>               |

\*Voting Age Population

Some percentages may be subject to rounding error.