



Boundary Advisory Committee

Tuesday, January 10, 2017

6:00 PM – 8:00 PM

Carruth Administration Center

Board Auditorium

Purpose and Responsibilities:

The purpose of the Boundary Advisory Committee (BAC) is to assist in developing recommendations for the creation of, and adjustment to, school attendance zone boundaries.

To accomplish its purpose, the BAC shall advise the Superintendent who will develop a recommendation to the Board on the following boundary-related activities which may include, but are not limited to:

1. Developing the criteria for evaluating boundary proposals.
2. Creating attendance zones for new school facilities.
3. Reviewing and advising the administration on the development of facility-related contingency plans due to school performance issues.
4. Repurposing or consolidation of existing school facilities.
5. Providing advisory input, as appropriate, during the preparation and a bi-annual review of the Facility Master Plan with the Board of Trustees and the Superintendent.
6. Planning and conducting stakeholder engagement activities, and gathering and assessing stakeholder input.
7. Providing progress reports and formal recommendations to the Superintendent.
8. Completing other projects as assigned by the Superintendent or raised by the Facilities and Bond Planning Advisory Committee.

Time	Agenda Item	Presenter	Strategic Plan Commitments (If Applicable)
6:00	Call to Order <ul style="list-style-type: none">• Welcome and Introductions• Open Meeting• Recognition of Visitors• Review Agenda and Meeting Goals	Co-Chairs	
6:05	Citizens' Communication	Citizens	9
6:15	Approval of Minutes (11/17/16)	Co-Chairs	
6:20	Review Requests for Information	Beth Wilson	
6:25	Update on the Facilities and Bond Planning Advisory Committee (FABPAC) Work	Melissa Laursen	9, 10
6:40	Presentation on 2016-17 Demographic Update	Beth Wilson	9, 10
7:40	Discussion of Future Work Plan	Melissa Laursen	9, 10
7:55	Requests for Information and Future Agenda Items	Co-Chairs	
8:00	Adjourn	Co-Chairs	

Note: Strategic Plan can be viewed on the district's website at: <http://www.austinisd.org/strategicplan>

Boundary Advisory Committee (BAC)

Meeting Summary

Thursday, November 17, 2016

Committee Members in Attendance

Andy Anderson, Co-chair
Latisha Anderson
Meghan Dougherty
Chris Farley, Co-chair
Lindsay Fitzpatrick
Mike Geeslin
Hollie Jenkins
Dr. Deanna Mercer
Rebecca Shah
Valerie Typer
Emily Vitris

Staff Members in Attendance

Melissa Laursen
Paul Turner
Beth Wilson

Visitors

Vanessa Ochoa

Agenda

- I. Call to Order
 - Welcome and introductions
 - Open meeting
 - Recognition of visitors
 - Review agenda and meeting goals
- II. Citizens' Communication
- III. Approval of Minutes (10/27/16)
- IV. Review Requests for Information
- V. Update on Facilities and Bond Planning Advisory Committee (FABPAC) Work
- VI. Discussion on SY2016-17 Enrollment Numbers and effect on Permanent Capacity, specifically, but not limited to: Baranoff Elementary
- VII. Requests for Information and Future Agenda Items
- VIII. Adjourn

I. Call to Order

Co-Chair Andy Anderson called the meeting to order at 6:08 pm and the agenda was reviewed with the committee.

II. Citizens' Communication

There were no visitors registered for citizens' communication.

III. Approval of Minutes (10/17/16)

The September 13, 2016 minutes were approved, with one minor revision to agenda item number VII. The correction to the statement is underlined "Phasing and demographic information for Greyrock Ridge.

IV. Review Requests for Information

- Capacity of charter schools located with AISD boundaries.
 - Staff does not have this information available; however, at the next meeting, charter school enrollment data can be distributed.
- Phasing and demographic information for Greyrock Ridge.
 - This information was presented as part of agenda item VI.
- Number of additional portables that could be added to Clayton.
 - Four (4) portables are currently on site at Clayton; with the potential of two (2) additional portables. This was discussed as part of agenda item VI.
- *Percent of Capacity by Enrollment* chart sorted by Planning Cluster.
 - Distributed.

V. Update on Facilities and Bond Planning Advisory Committee

A summary of the recent work of the Facilities and Bond Planning Advisory Committee (FABPAC) was presented.

- The FABPAC reviewed planning cluster data, including facility conditions assessments, educational suitability assessments, and school utilizations. Based on these data sets, the FABPAC assigned a "theme" to each cluster to help identify which clusters have the most critical needs.

VI. Discussion on SY2016-17 Enrollment Numbers and Effect on Permanent Capacity, specifically, but not limited to Baranoff Elementary

The committee continued to discuss the boundary change request received from some Greyrock Ridge residents to be reassigned from Baranoff Elementary to Clayton Elementary.

Information received from the developer of Greyrock Ridge indicates a total of 388 residential units at build out. Fifty-four (54) homes are currently occupied with an additional 34 under construction or unoccupied. Approximately 24 are planned to be constructed each year.

The committee reviewed the data presented, and discussed the advantages and disadvantages of the boundary request. Some members felt that Clayton (and Mills) could serve as a relief school for Kiker if the Avana land donation does not come to fruition. Also, the boundary request will not provide the needed relief for Baranoff, as only a small number of Greyrock Ridge students currently attend Baranoff.

Questions asked by committee members:

- Is the Clayton CAC in support of the boundary change request?
 - At this point, staff has not met with the Clayton CAC or Administration.
- What is the status of the Avana land donation agreement?
 - In June 2016, the Board of Trustees approved a conditional agreement between AISD and Standard Pacific Homes for the transfer and assignment of students in the Hays CISD portion of the Avana subdivision. The Hays CISD students would be assigned to the same school as the AISD students (currently Kiker ES, Gorzycki MS, Bowie HS). As part of the agreement, Standard Pacific would donate a site for an elementary school. The agreement is currently in negotiations, and has not yet been finalized.
- Does the boundary request have to be limited to the Greyrock Ridge neighborhood? Can there be a regional look at the area?
 - The BAC can look at the larger region to address capacity issues.
- Is there more undeveloped land in this area that could impact the schools? What will the impact of SH 45 be?
 - Currently, the demographic report does not show any new planned developments around this area. The demographic plan is updated annually, with new population projections. The future impact of SH 45 is unknown.

After a lengthy discussion, the BAC agreed to re-examine the request at its February meeting. The BAC determined it was important to have the following information available prior to making a recommendation to the Superintendent on initiating a boundary change:

- District's 2016-17 Demographic Report (January 2017)
 - The BAC will review the new 5- and 10-year projections for the southwest area of the district.
- Facilities and Bond Planning Advisory Committee preliminary Facility Master Plan recommendations (end of January/early February)
 - These recommendations will provide information as to the short- and long-term needs and plans for the southwest region of the district.
- Update on the Avana elementary donation site (next several months)
 - An approved land donation agreement for an elementary school site could affect boundary recommendations.

At this time, the earliest a boundary change could be implemented is school year 2018-19. The BAC can initiate a boundary change up until September 2017 for effect in school year 2018-19.

VII. Requests for Information and Future Agenda Items

Requests for Information

- Charter School enrollment data
- Maps of the southwest region of Austin ISD, specifically focused around the Baranoff and Kiker attendance areas showing:
 - An Aerial view
 - Residential density

Future Agenda Items

- If there are no pressing issues, cancel the December 13 meeting.

VIII. Adjourn

Co-chair Andy Anderson adjourned the meeting at 7:53 PM.

CHARTER SCHOOLS IN AND NEAR AUSTIN ISD

Part One: Locations



Source: TEA, 2015-16 TAPR Reports

(Multiple campuses at one location indicated in parentheses)



*Austin Independent School District
Campus and District Accountability
11/29/2016*

CHARTER SCHOOLS IN AND NEAR AUSTIN ISD

Part Two: Enrollment Data

Charter School	Grades	06-07 Total	07-08 Total	08-09 Total	09-10 Total	10-11 Total	11-12 Total	12-13 Total	13-14 Total	14-15 Total	15-16 Total
ALTAMIRA ACADEMY (WAYSIDE)	PK-2										281
AMER. YOUTHWORKS CHARTER SCHOOL	9-12	135	161	115	235	156					
AMER. YOUTHWORKS SERVICE LEARNING	9-12	287	303	194	71	101	115	123	167		
ATHLOS LEADERSHIP ACAD. (JUBILEE)	K-12										1,161
AUSTIN ACHIEVE PUBLIC SCHOOLS	6-9							118	278	411	548
AUSTIN CAN ACADEMY CHARTER SCHOOL	9-12	271	301	290	357	363	297	387	386	303	399
AUSTIN DISCOVERY SCHOOL	K-8	213	231	235	317	375	400	395	374	491	543
AUSTIN OAKS (UT)	8										3
CEDARS INTERNATIONAL ACADEMY	PK-8	188	160	182	217	221	250	308	353	392	390
CHAPARRAL ACADEMY (STAR)	K-12	301	315	303	304	346	343	365	360	358	357
E. AUSTIN COLLEGE PREP ACADEMY (SW KEY)	2-6				88	179	308	717	323	272	219
E. AUSTIN COLLEGE PREP ACADEMY (MLK)	7-12								531	575	574
EDEN PARK ACADEMY (WAYSIDE)	PK-6	156	157	171	188	232	253	341	368	439	458
EXCEL CENTER (GOODWILL)	9-12										279
FRUIT OF EXCELLENCE SCHOOL	K-12	51	33	22	27						
GEORGE M. KOMETZKY SCHOOL (UT)	K-12	27	13	9	17	4	28	52	74	56	53
HARMONY SCHOOL OF EXCELLENCE	6-12				412	508	628	712	741	610	565
HARMONY SCHOOL OF SCIENCE	K-5			422	526	526	531	550	547	564	532
HARMONY SCIENCE ACADEMY	K-8	264	289	263	310	335	351	378	364	403	562
HARMONY SCIENCE ACADEMY N. AUSTIN	6-12			149	382	561	610	602	614	657	808
HARMONY SCHOOL OF INNOVATION	K-5									394	468
HELPING HAND (UT)	2-7			19	21	18	22	22	21	20	24
IDEA ALLAN	6-9							215	221	370	474
IDEA BLUFF SPRINGS	K-6										*
IDEA RUNDBERG	K-5							334	381	582	716
KIPP AUSTIN ACADEMY OF ARTS & LETTERS	5-8				97	213	311	403	413	412	427
KIPP AUSTIN BEACON PREP	5-8							115	232	335	426
KIPP AUSTIN COMUNIDAD	K-4					132	264	386	488	603	603
KIPP AUSTIN CONNECTIONS ELEM.	K-4						132	260	372	482	601
KIPP AUSTIN LEADERSHIP ELEM.	K-3								239	355	471
KIPP AUSTIN OBRAS	K-3								240	356	473
KIPP AUSTIN VISTA MIDDLE SCHOOL	5-8							113	228	336	431
KIPP AUSTIN COLLEGE PREP	5-8	313	365	367	361	374	398	401	406	415	431
KIPP AUSTIN COLLEGIATE	9-12			95	179	273	370	403	480	566	627
MAGNOLIA MONTESSORI FOR ALL	EC-4									276	332
NYOS CHARTER SCHOOL	4-12	372	337	385	389	440	488	524	553	597	603
NYOS MAGNOLIA McCULLOUGH	PK-3	96	266	280	288	288	311	319	318	325	323
PREMIER HIGH SCHOOL N. AUSTIN (RES)	9-12			111	155	205	248	226	207	202	169
PREMIER HIGH SCHOOL S. AUSTIN (RES)	7-12			219	219	225	235	237	236	220	208
REAL LEARNING ACADEMY (WAYSIDE)	PK-5							312	600	677	693
SAILL CHARTER SCHOOL	K-9		180	166							
SCI-TECH PREPARATORY (WAYSIDE)	6-12								143	252	431
SETTLEMENT HOME (UT)	7-12	26	30	27	31	28	29	28	34	34	35
TEXAS EMPOWERMENT ACADEMY	6-9	122	119	141	139	141	121	91	95	108	88
TEXAS EMPOWERMENT ACADEMY ELEM.	K-5				88	110	138	127	142	163	199
TEXAS NEUROREHABILITATION CTR. (UT)	2-11	55	47	38	45	58	57	70	74	72	73
TEXAS PREPARATORY SCHOOL	K-6								47	119	104
UNIV. OF TEXAS ELEM. SCHOOL	PK-5	216	255	252	256	259	296	298	305	304	303
UNIV. OF TEXAS HIGH SCHOOL	9-12										10
VISTA ACADEMY-MUELLER (RES)	K-7							144	181	197	201
WELLS BRANCH LEADERSHIP ACAD. (JUBILEE)	PK-10								245	938	943
NUMBER OF CHARTER SHCOOLS		17	18	24	27	27	28	35	41	42	47
TOTAL CHARTER SCHOOL ENROLLMENT		3,093	3,562	4,455	5,719	6,671	7,534	10,076	12,381	15,241	18,619
TOTAL AISD ENROLLMENT		81,917	82,181	83,033	84,245	85,273	86,124	86,233	85,014	84,191	83,060

Impact of Demographic Population Projections on AISD Facilities by SY 2021-22 and SY 2026-27

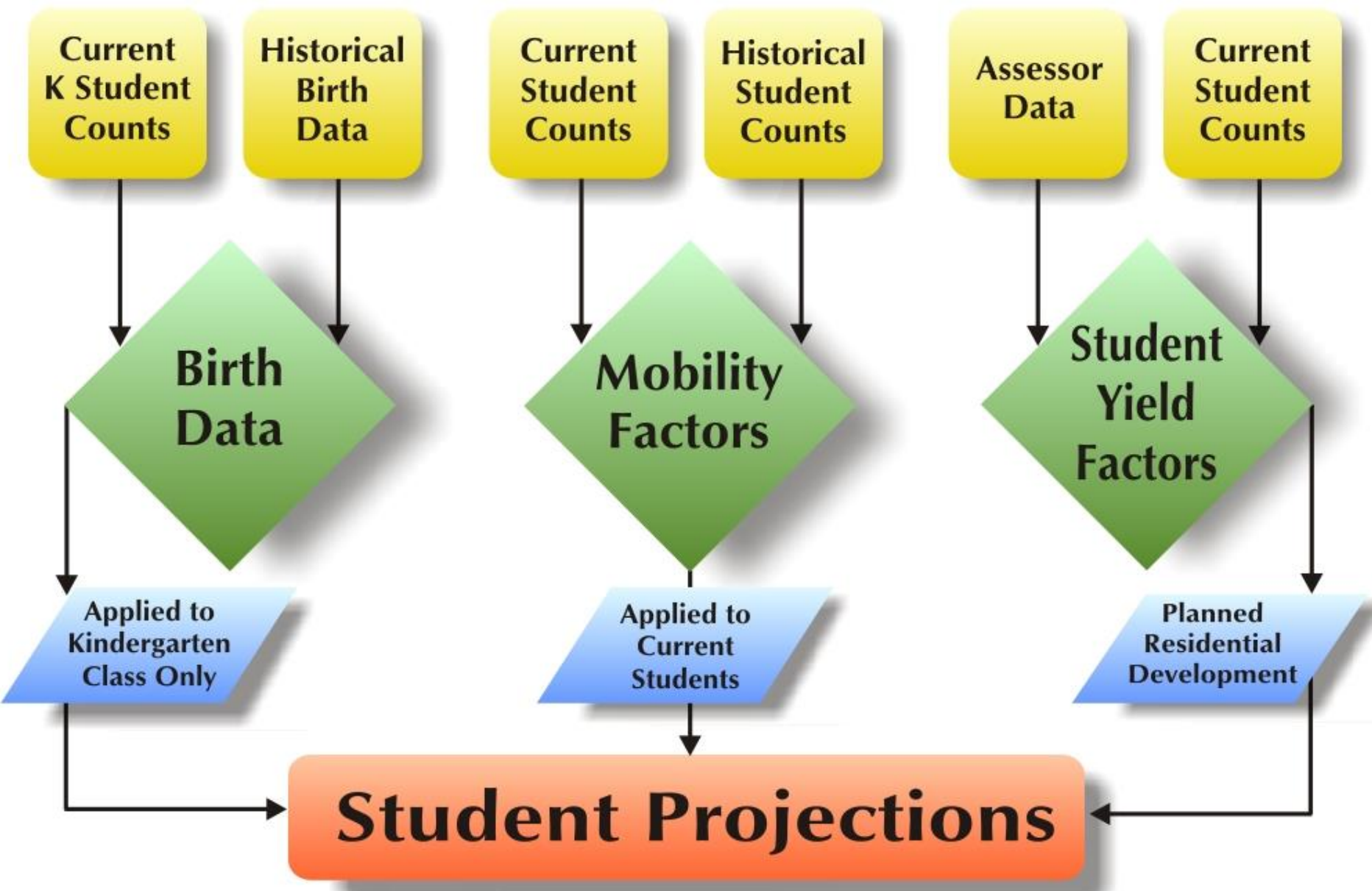
January 9, 2017

Overview of Presentation

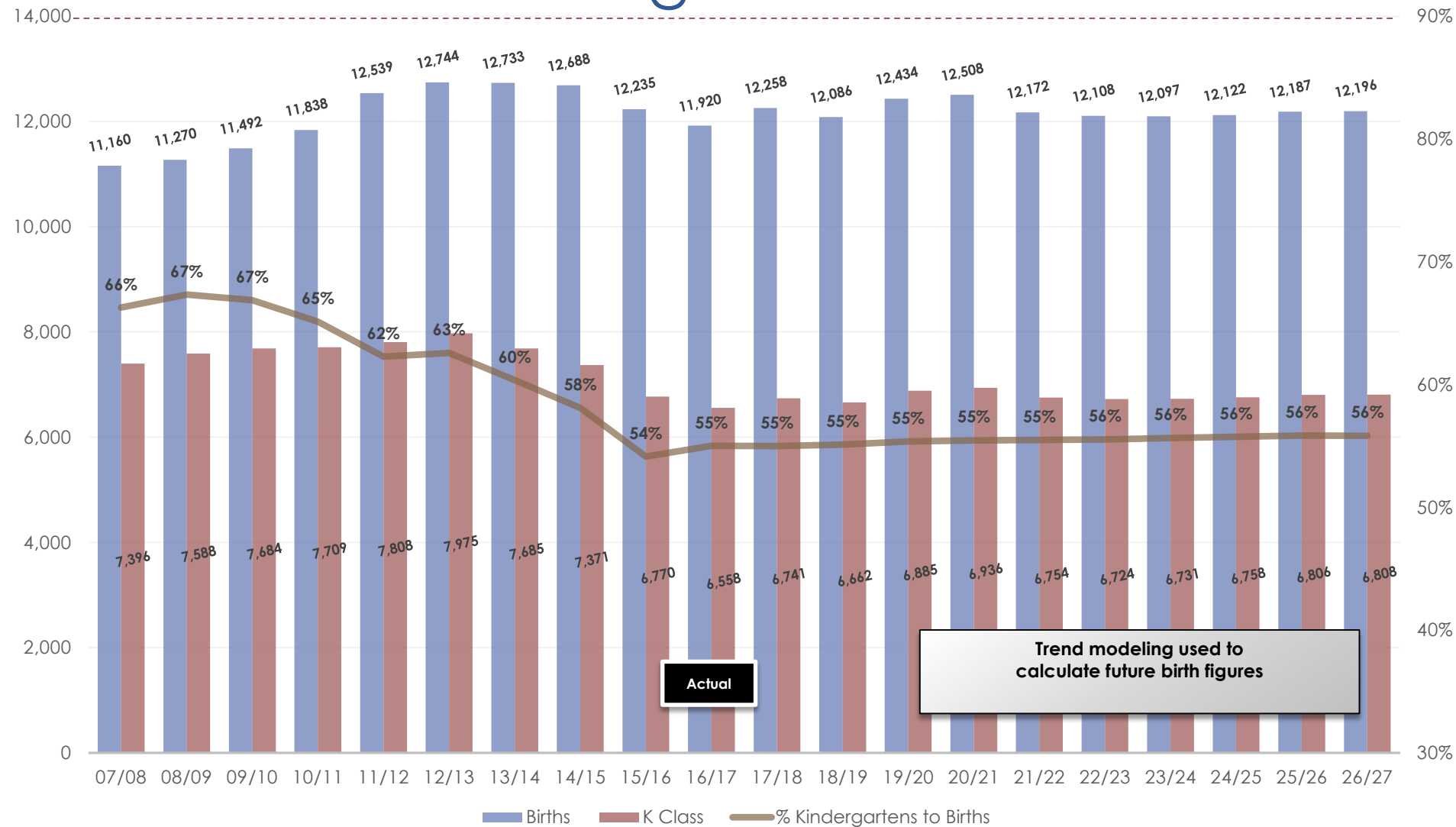
- ▶ Key Findings of Report
- ▶ Methodology
- ▶ Planned Residential Development
- ▶ Impact on Schools

Key Findings

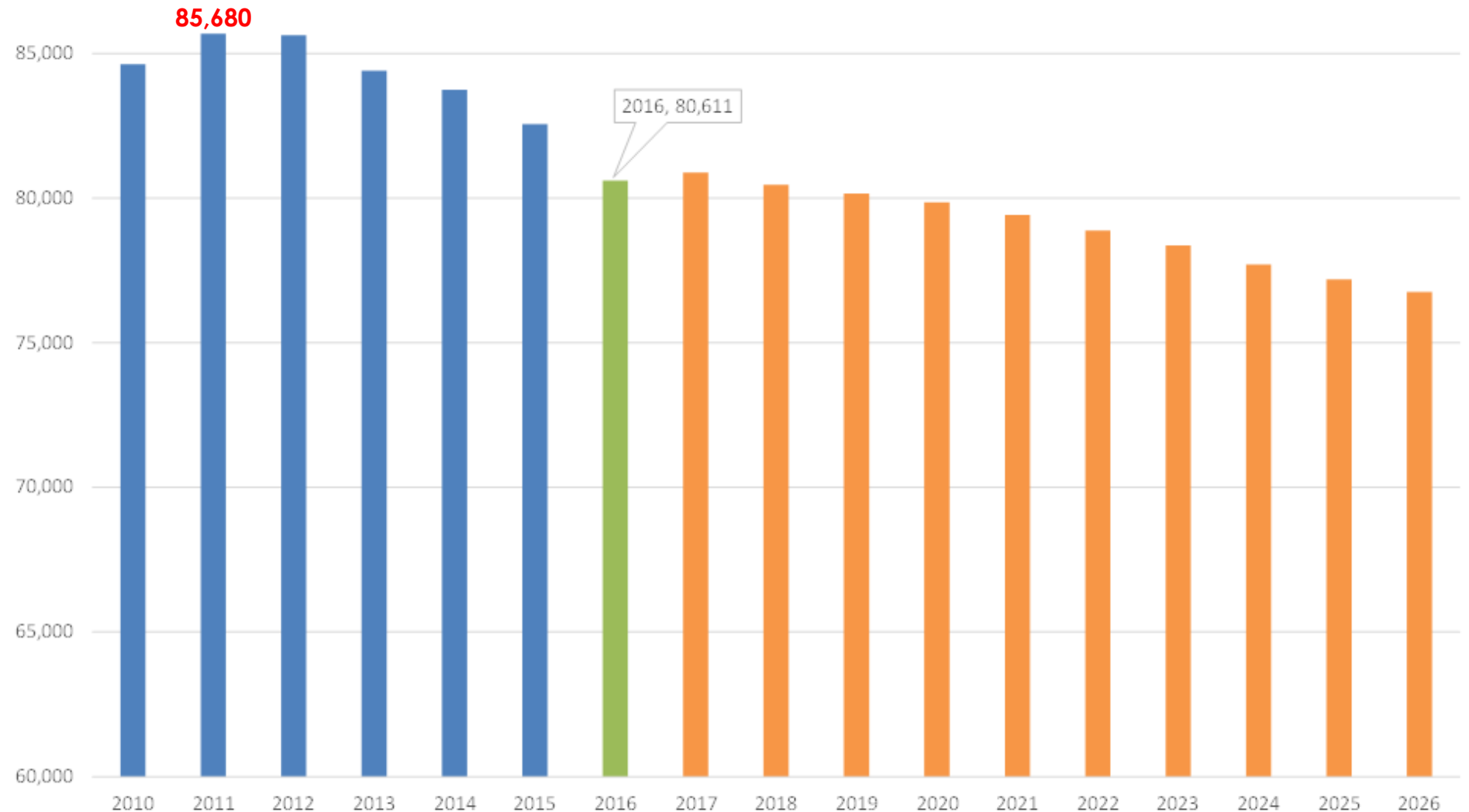
- ▶ Student population is expected to decline over the next ten year period, with SY 2026 estimated student count of 79,762, a reduction of 4,266 students (-4.8%) from SY 2016. Last year's report projected as a 7.4% net decrease over the same period.
- ▶ Student count reductions over the prior four years, found primarily at PK and K grade levels, are due to lower birth rates and fewer children attending AISD schools five years after their birth year (loss of market share).
- ▶ The greatest declines will be seen in the elementary and middle school grade levels, with an anticipated decline of 2,163 (-5.0%) and 838 (-5.2%) students, respectively.
- ▶ Despite an overall decline, some areas of the District will continue to experience growth and overcrowding; most notably in Northwest elementary schools.



Birthrate to Kindergarten



Historic and Projected Populations



District-wide Ten-Year Projections

	2016	2017	2018	2019	2020	2021	2022	2023	2024	2025	2026
Elem.	43,365	42,915.3	42,221.7	41,785.9	41,509.3	41,456.8	41,474.7	41,386.3	41,399.4	41,326.9	41,201.7
Middle	16,107	16,524.7	16,802.4	16,877.0	16,590.0	16,003.6	15,373.4	15,080.7	15,004.9	15,196.5	15,268.6
High	21,139	21,438.1	21,437.6	21,500.5	21,753.9	21,953.5	22,029.5	21,899.3	21,304.1	20,674.3	20,292.0
In District	80,611	80,878.1	80,461.7	80,163.4	79,853.2	79,413.9	78,877.6	78,366.3	77,708.4	77,197.7	76,762.3

K12 - Out of District	1,278	1,278	1,278	1,278	1,278	1,278	1,278	1,278	1,278	1,278	1,278
PK - Out of District	193	193	193	193	193	193	193	193	193	193	193
EE (-3 & -2)	1,265	1,265	1,265	1,265	1,265	1,265	1,265	1,265	1,265	1,265	1,265
Unmatched	5	5	5	5	5	5	5	5	5	5	5
	83,352	83,619	83,203	82,904	82,594	82,155	81,619	81,107	80,449	79,939	79,503
	-417.0	267.1	-416.4	-298.3	-310.2	-439.3	-536.3	-511.3	-657.9	-510.7	-435.4
	-0.50%	0.32%	-0.50%	-0.36%	-0.37%	-0.53%	-0.65%	-0.63%	-0.81%	-0.63%	-0.54%

- ▶ Out-of-District student enrollment (1,471) increased significantly from SY 2015 (812) due to change in policy.
- ▶ Population peaks shown in Red

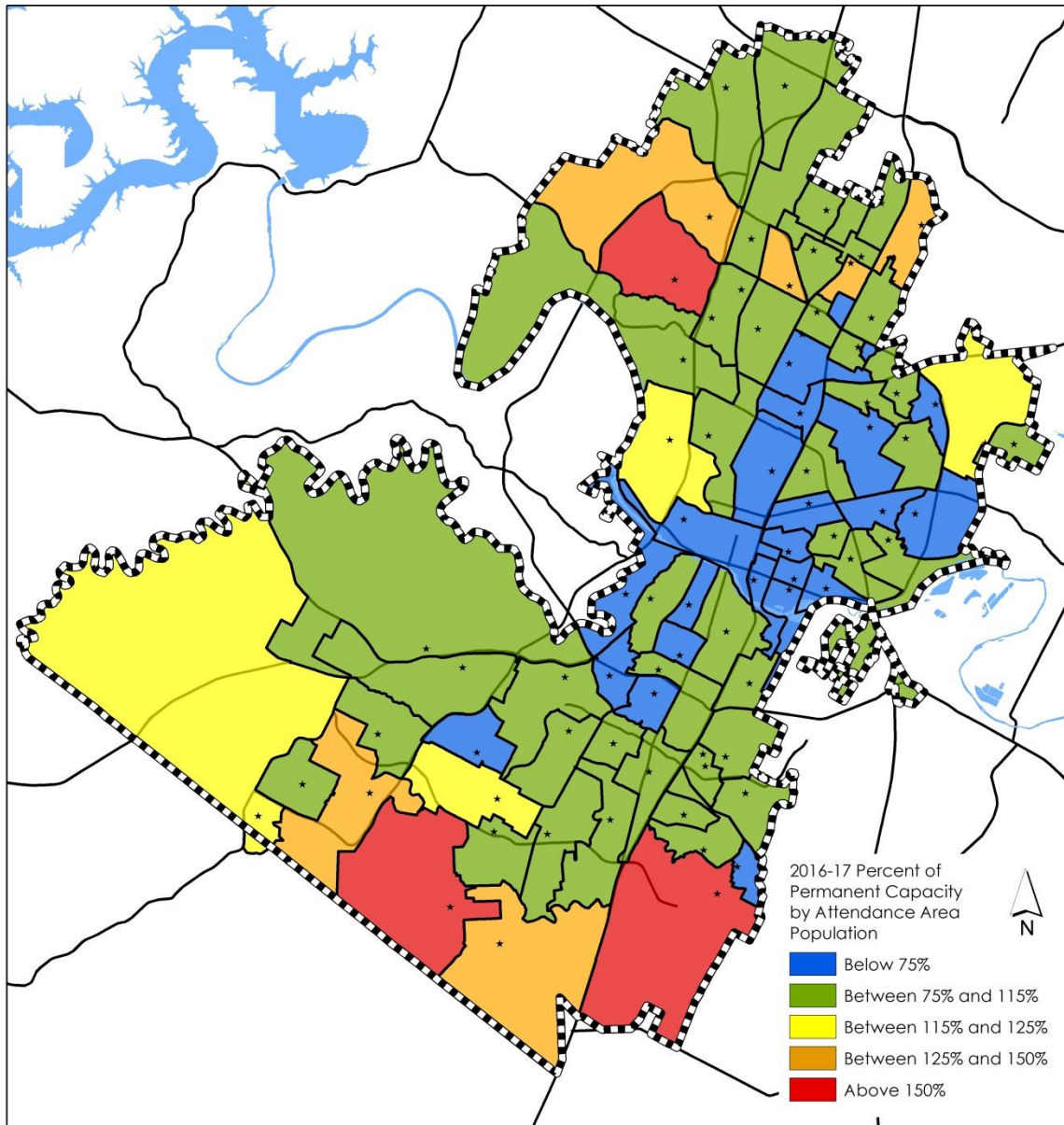
Planned Residential Development

- ▶ Over the ten-year period, 95 residential developments (13,361 units):
 - ▶ 3,442 Single Family Detached Units,
 - ▶ 3,896 Apartment Units
 - ▶ 4,992 Multi-Family Attached Units (duplexes, townhomes, etc.), and
 - ▶ 1,031 Condos
- ▶ Increases in student populations from new development continues to be limited due to type of housing units built, and the increases in home value and rental rates.

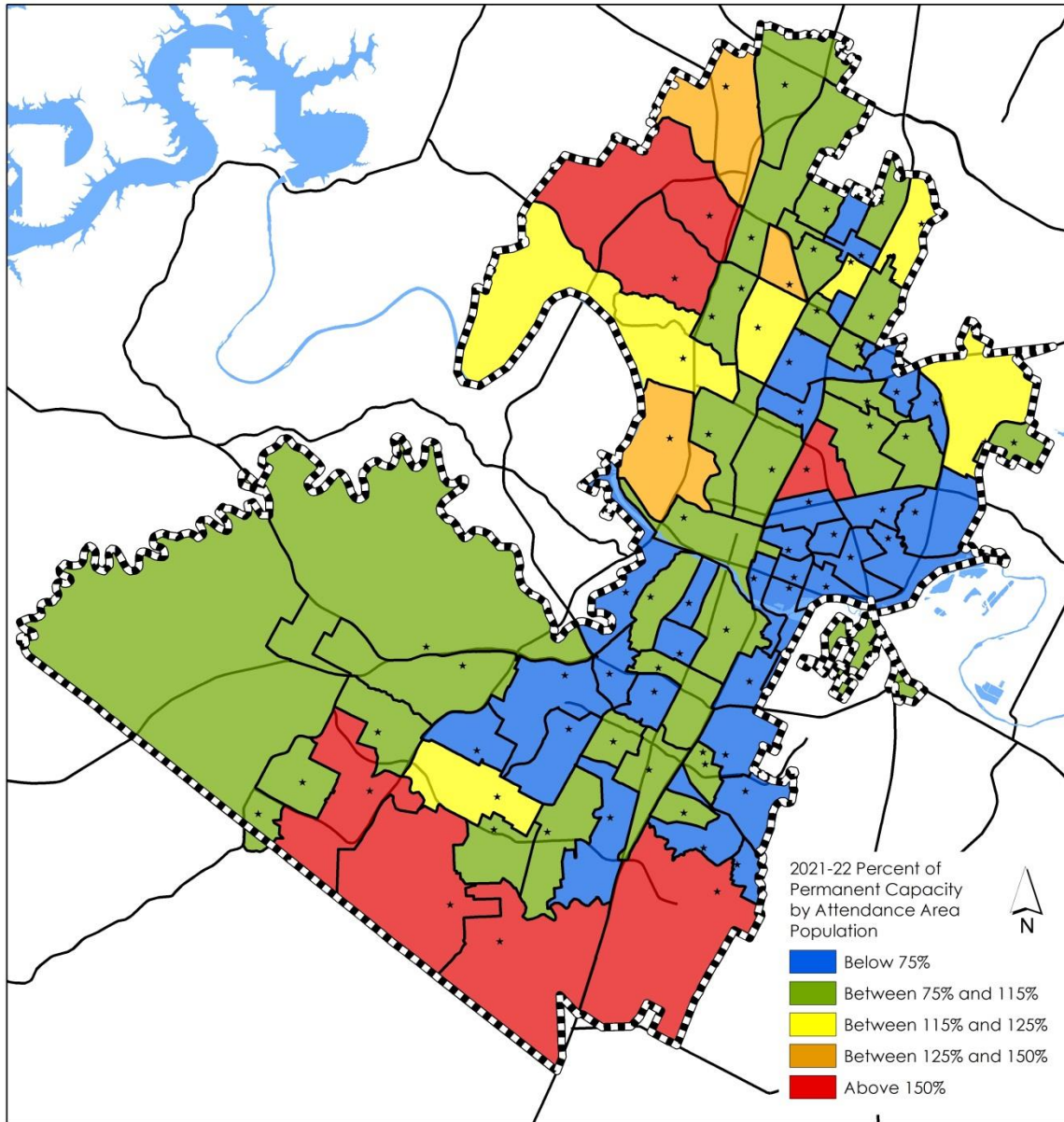
Student Residence Population Projections

- ▶ Projections are based on where students live, not where they attend school.
- ▶ This method provides the most accurate forecast of where shifts in demographics and student populations may occur, assisting the District with long-range planning.
- ▶ Projections by attendance area may be higher or lower than the actual school enrollments, as they do not consider students who transfer in and out of their geographic school boundary.

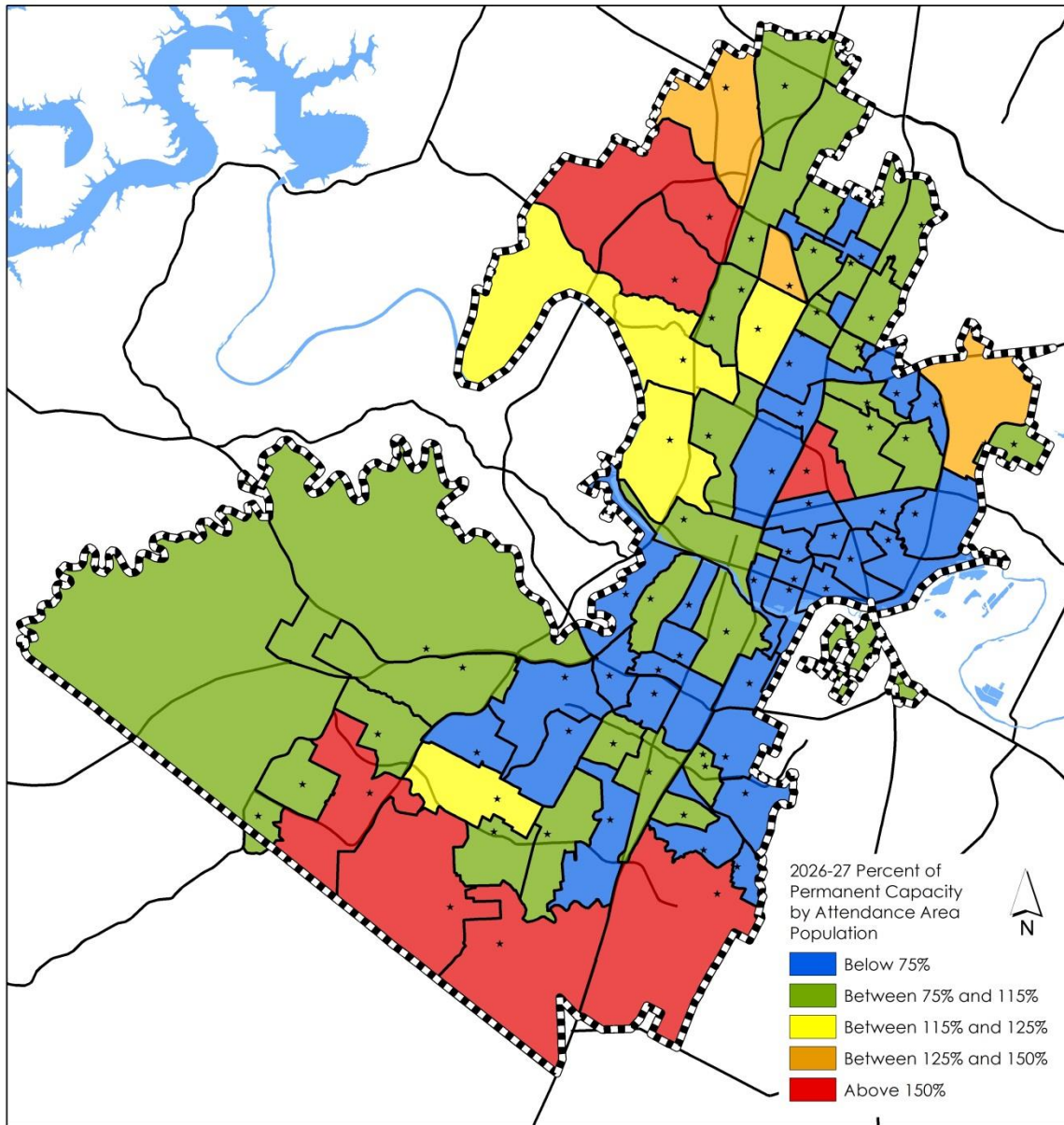
2016-17 Elementary School

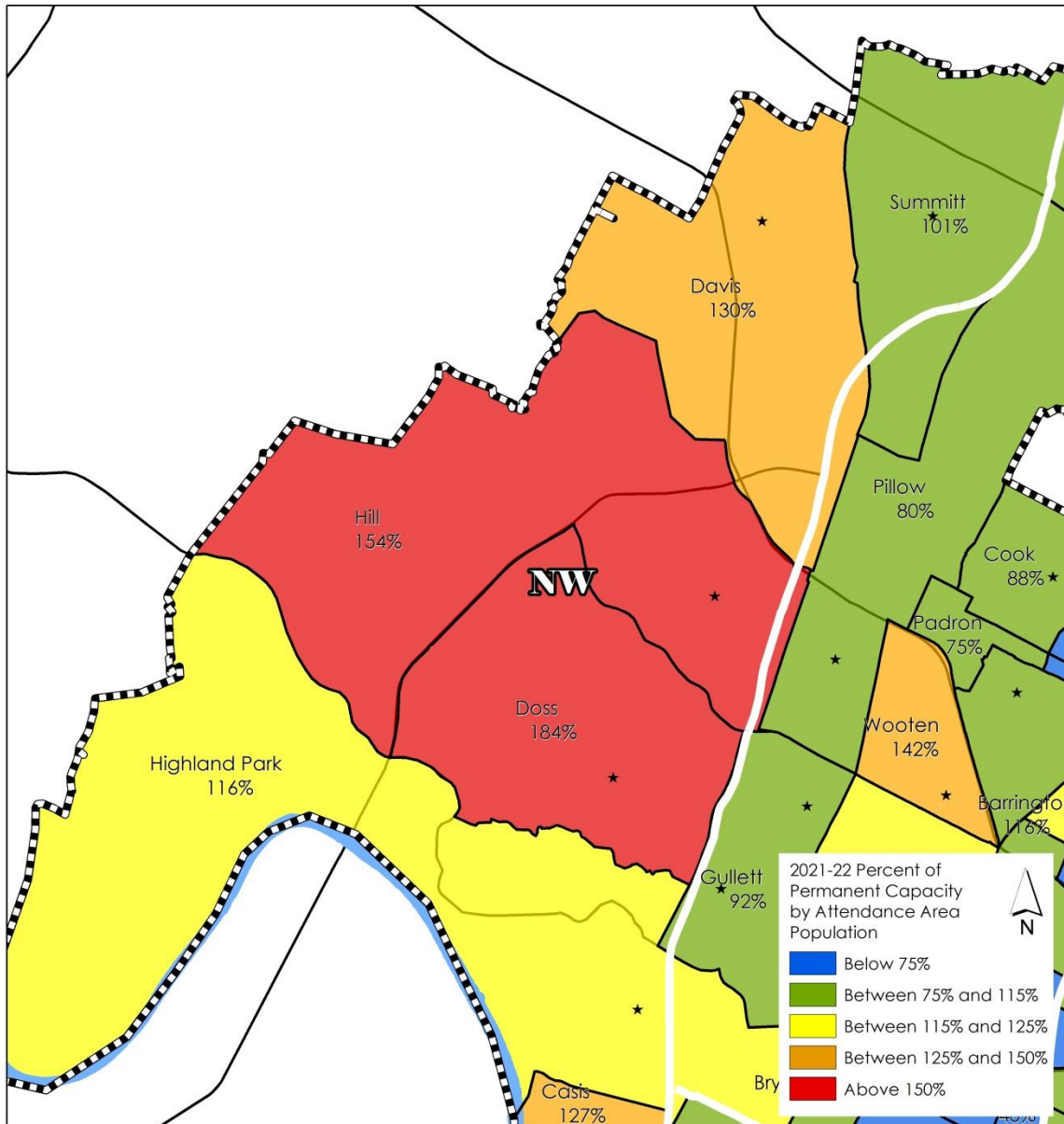


2021-22 Elementary School



2026-27 Elementary School



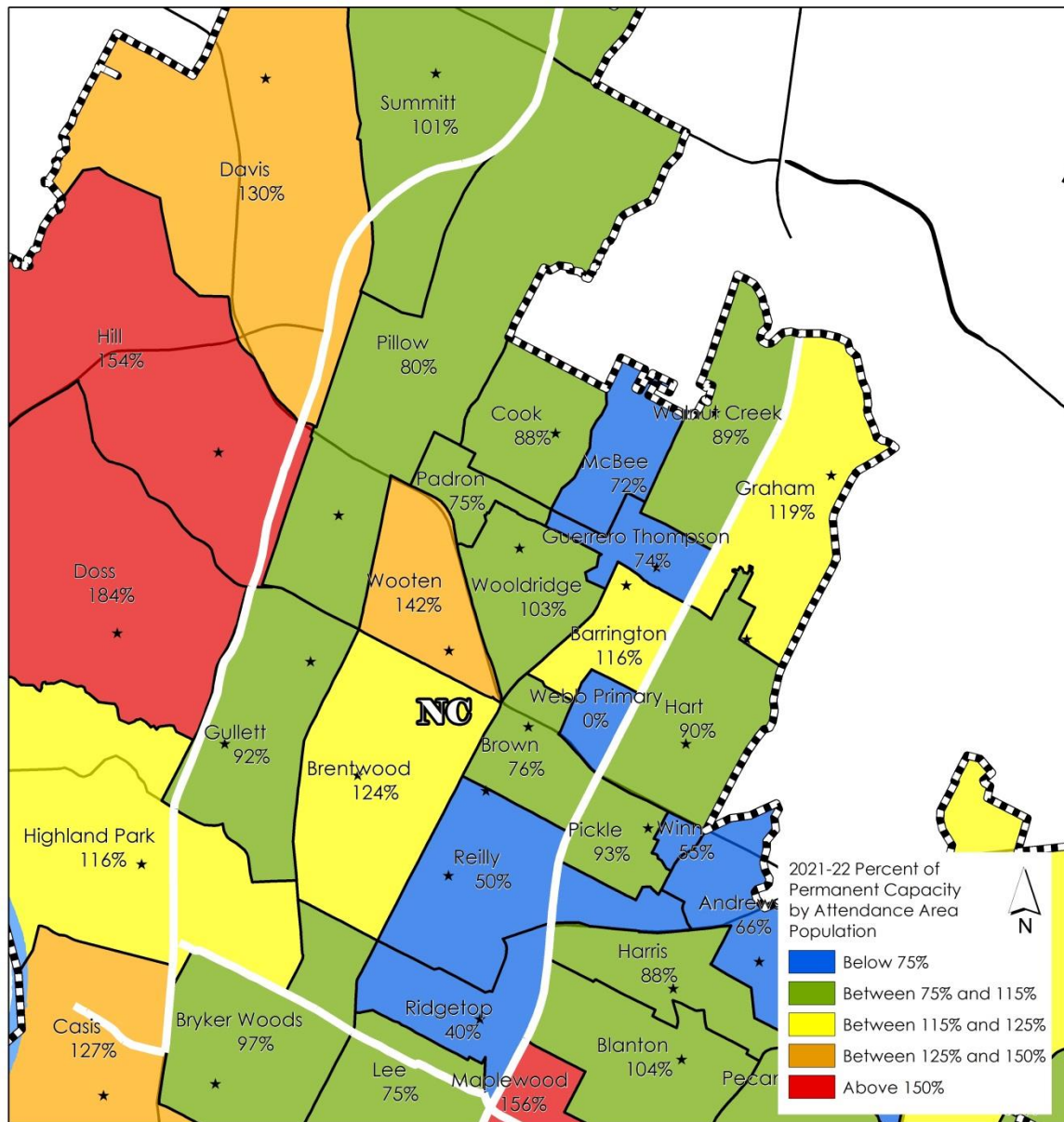


2021-22 Northwest

Doss ES (184%), Hill ES (154%), Davis ES (130%) and Highland Park (116%) are over the target range

Only Summitt ES is within the target range

There is not enough available capacity in Northwest Region to relieve overcrowding



2021-22 North Central

Wooten (142%),
Brentwood (124%) and
Barrington (116%) are
over the target range

Padron, Brown, Pillow,
Cook, Walnut Creek,
Gullett and Wooldridge
are within the target
range

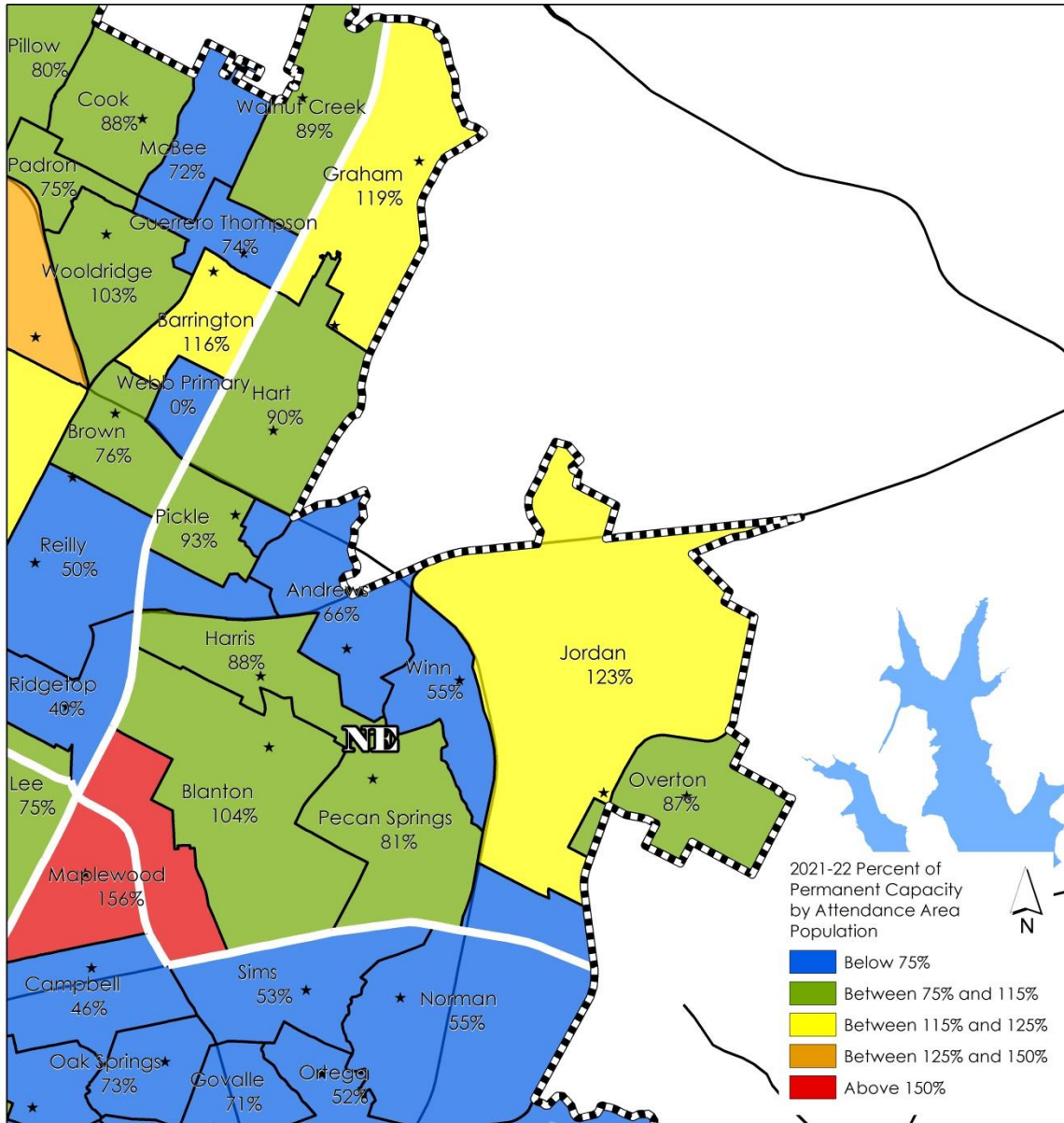
Ridgetop, Reilly, McBee
and Guerrero-
Thompson are below
the target range

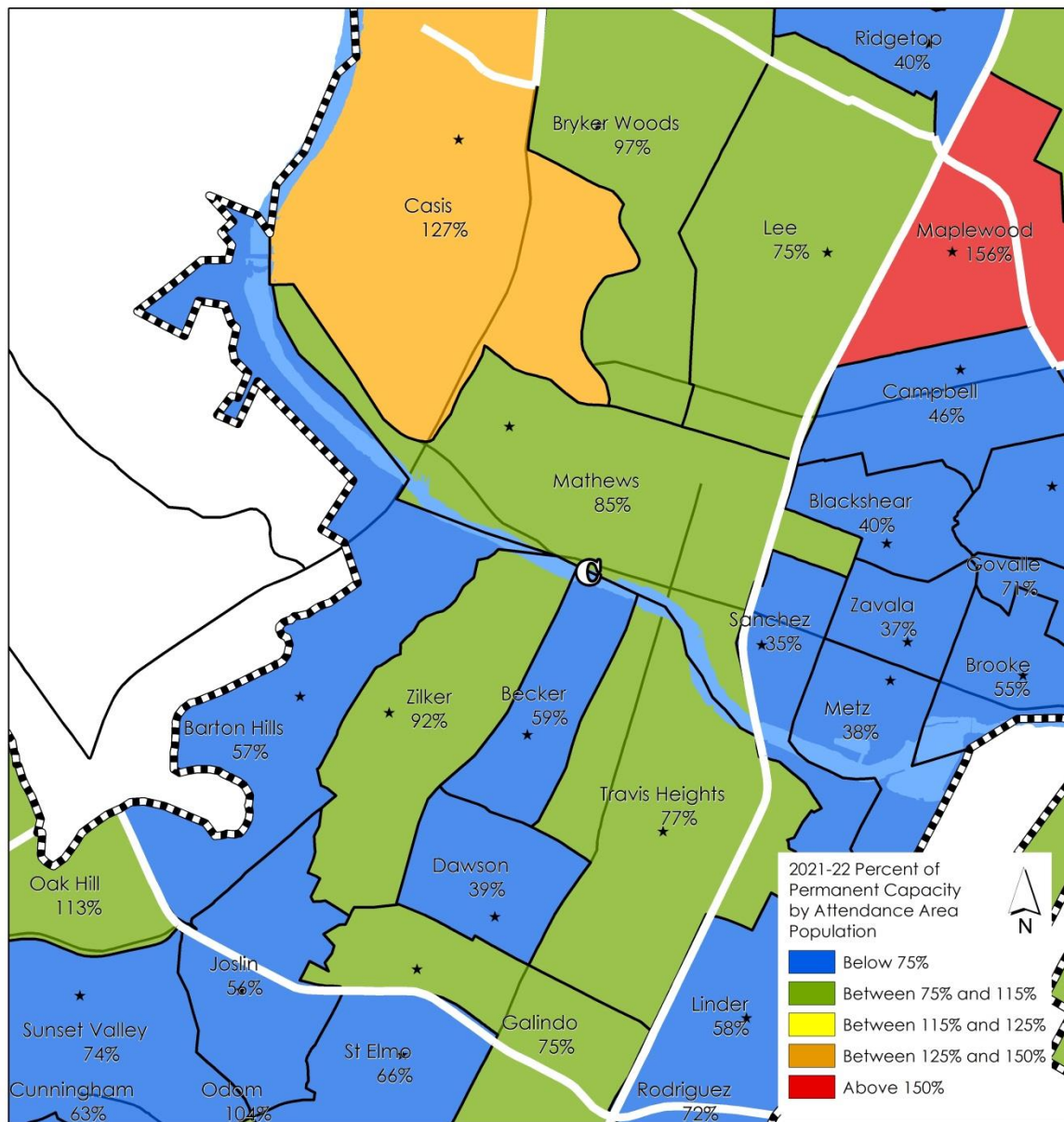
2021-22 Northeast

Maplewood (156%), Jordan (123%) and Graham (119%) are above the target range

Pecan Springs, Overton, Harris, Hart, Pickle and Blanton are within the target range

Winn and Andrews are below the target range



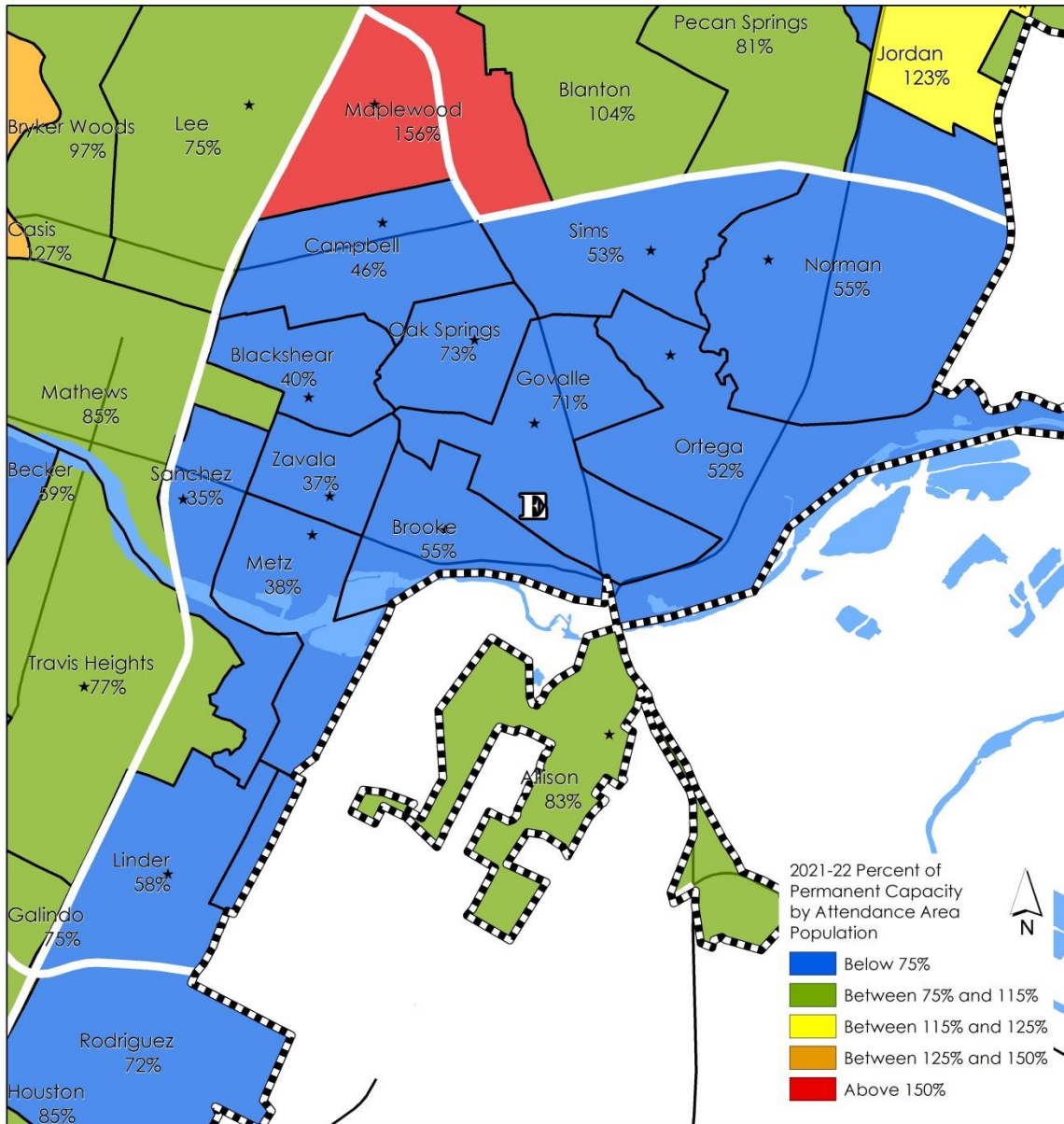


2021-22 Central

Casis (127%) is above the target range

Lee, Galindo, Travis Heights, Mathews, Zilker and Bryker Woods are within the target range

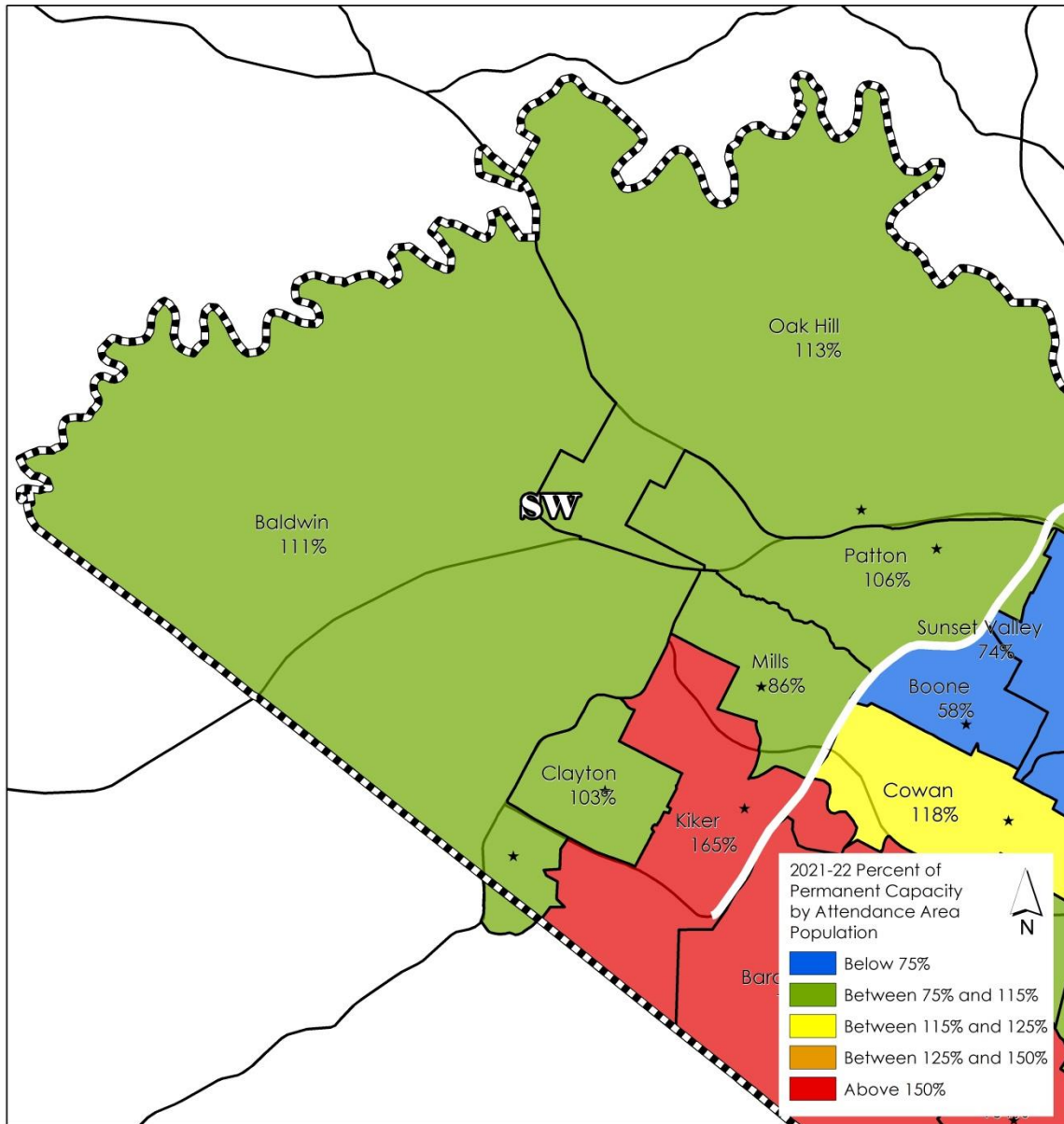
Dawson, Barton Hills and Becker are below the target range



2021-22 East

Allison is within the target range

Sanchez, Zavala, Metz, Blackshear, Campbell, Ortega, Sims, Norman, Brooke, Linder, Govalle and Oak Springs are below the target range



2021-22 Southwest

Kiker (165%) is over the target range

Mills, Clayton, Patton, Baldwin and Oak Hill are within the target range

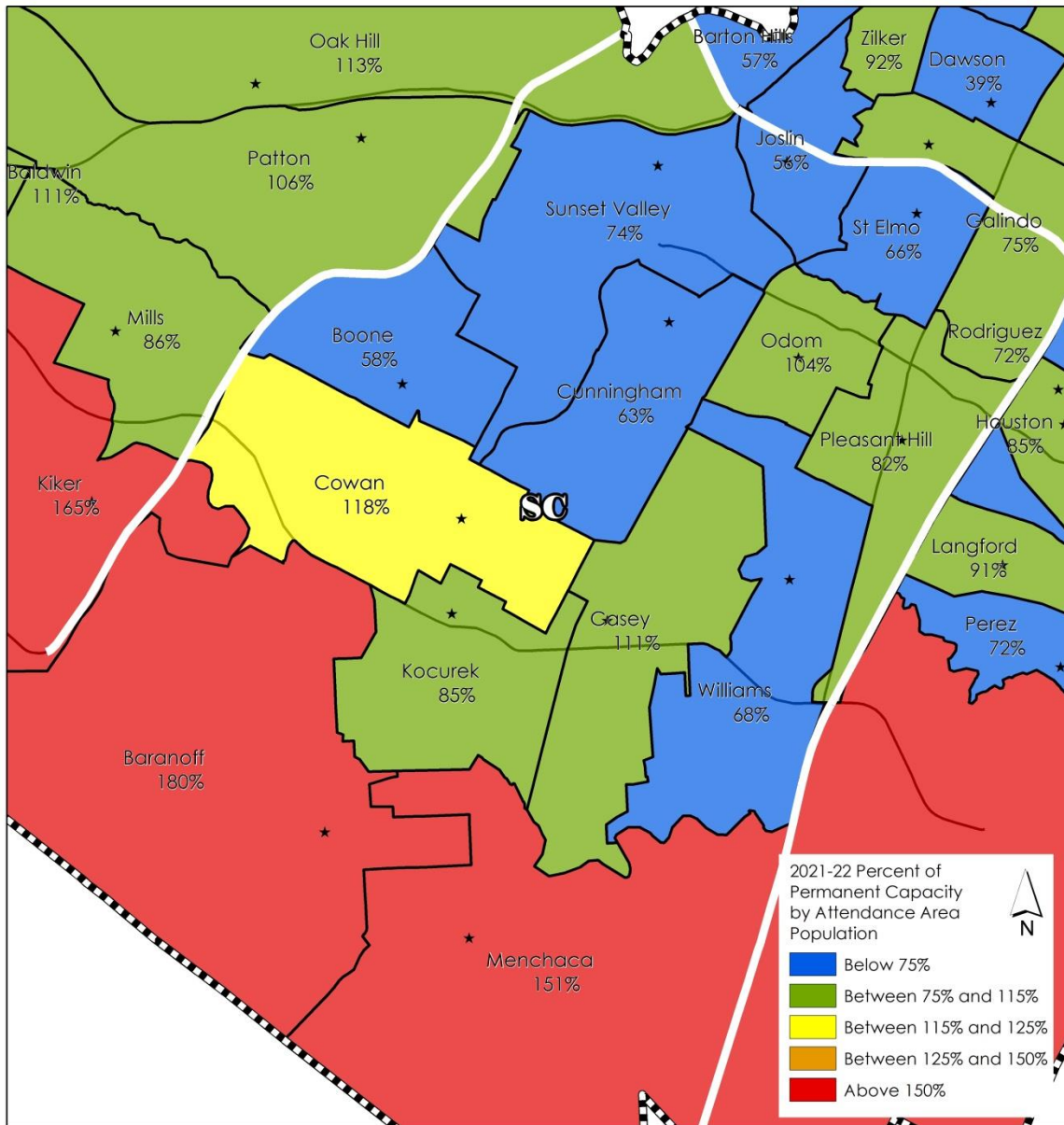
There is not enough available capacity in Southwest Region to relieve overcrowding

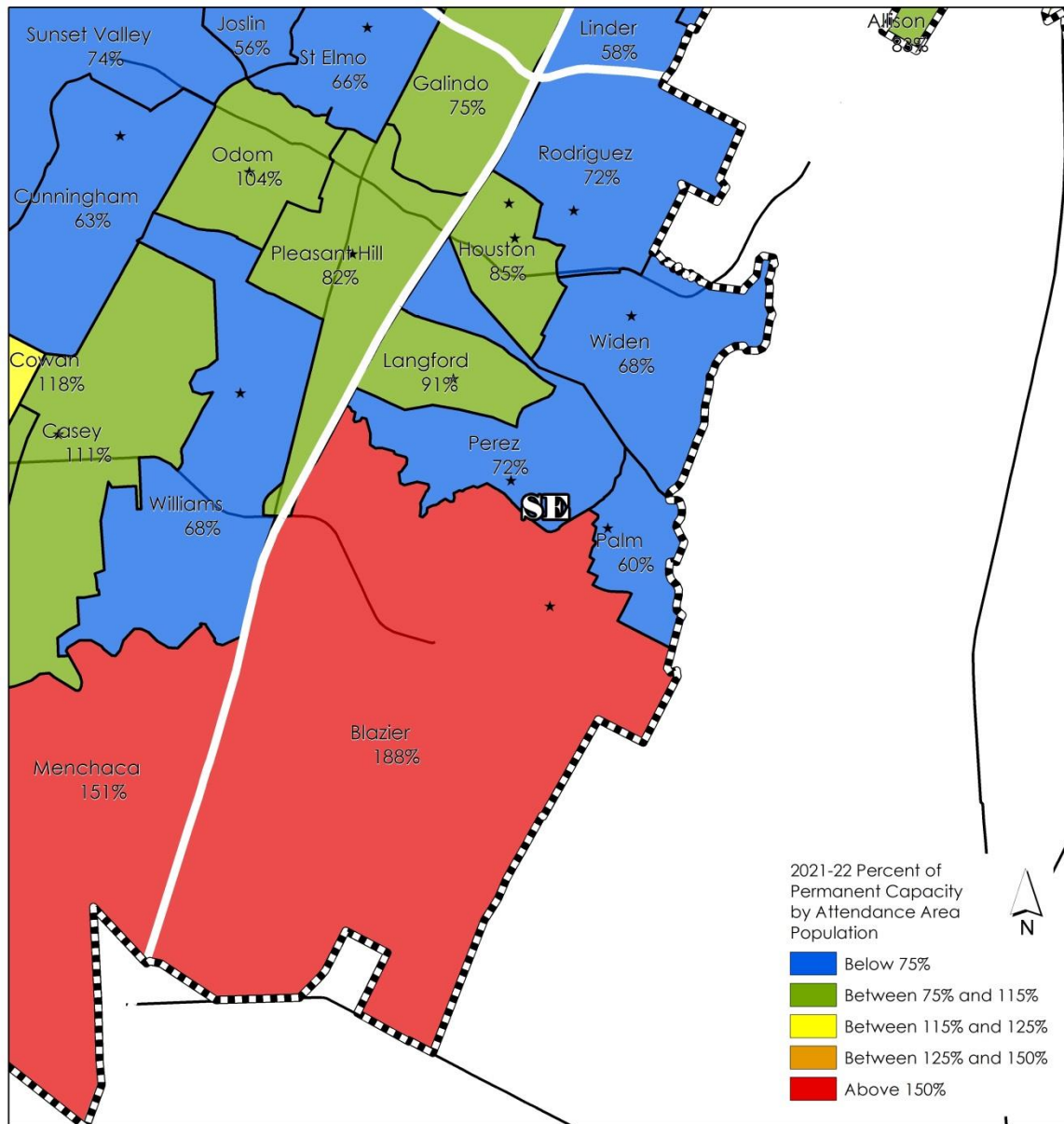
2021-22 South Central

Baranoff (180%),
Menchaca (151%) and
Cowan (118%) are
above the target
range

Pleasant Hill, Kocurek,
Odom and Casey are
within the target range

Boone, Joslin, St Elmo,
Cunningham, Williams
and Sunset Valley are
below the target range





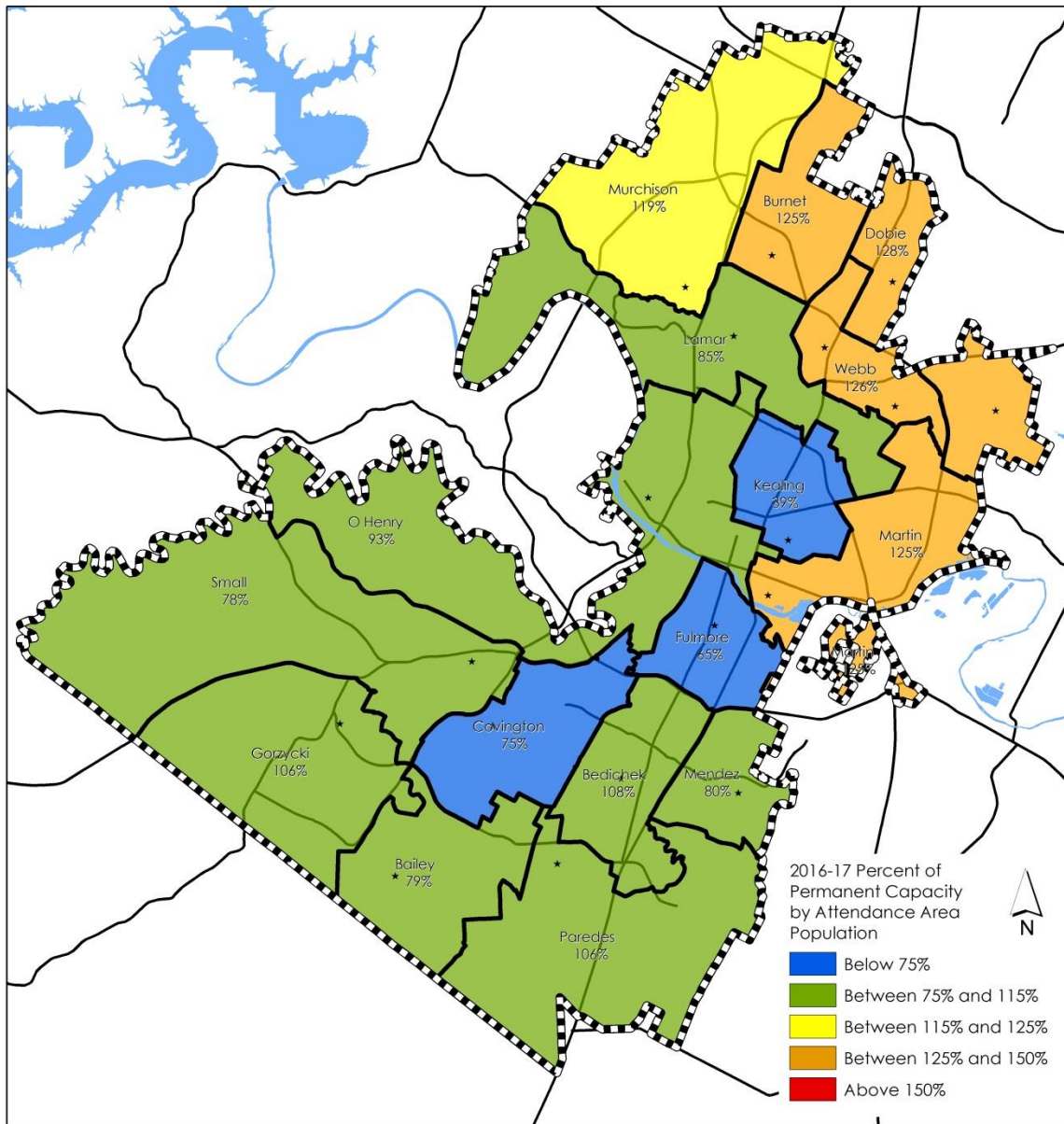
2021-22 Southeast

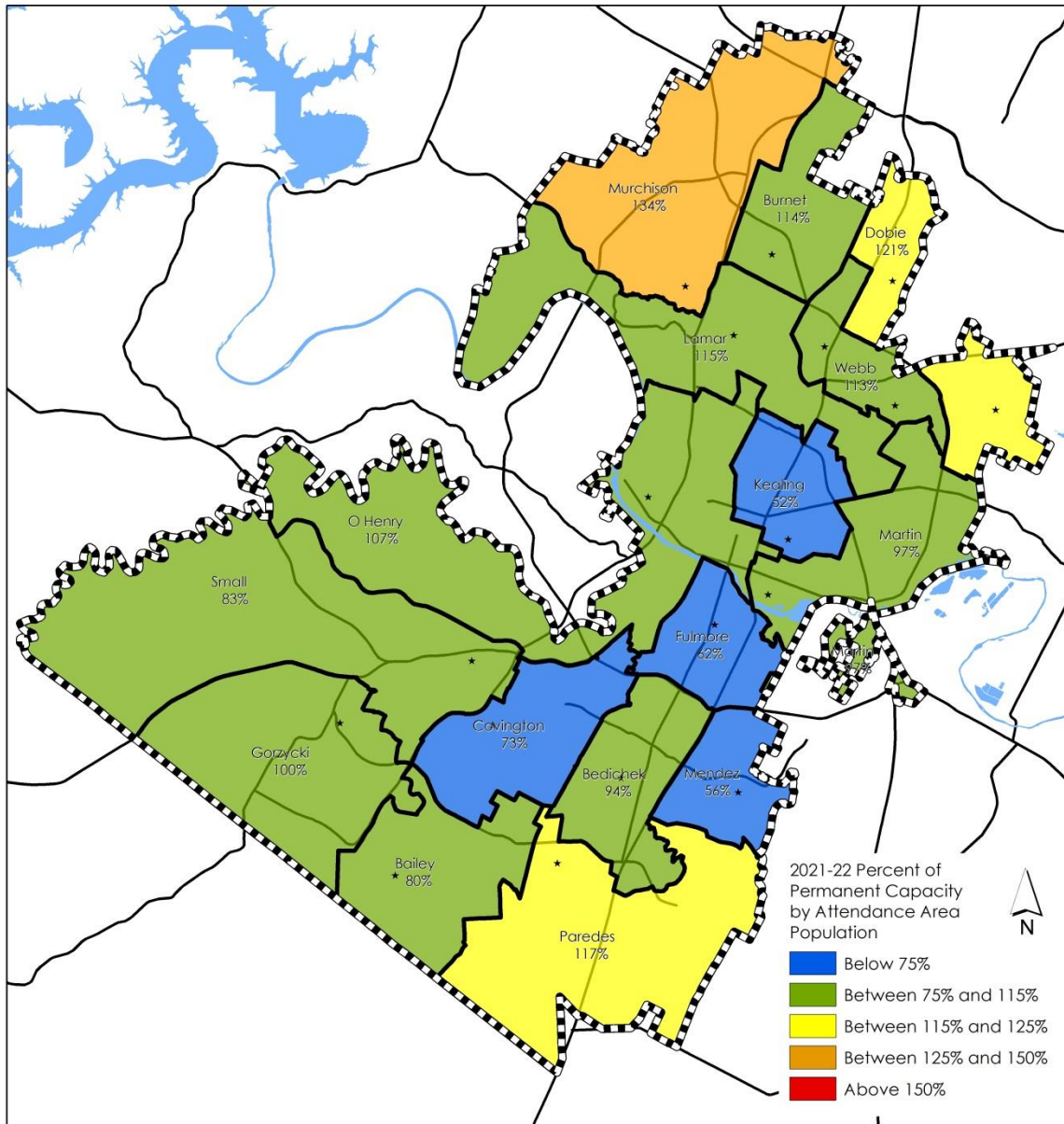
Blazier (188%) is over the target range

Houston and Langford are within the target range

Palm, Widen, Perez and Rodriguez are below the target range

2016-17 Middle Schools





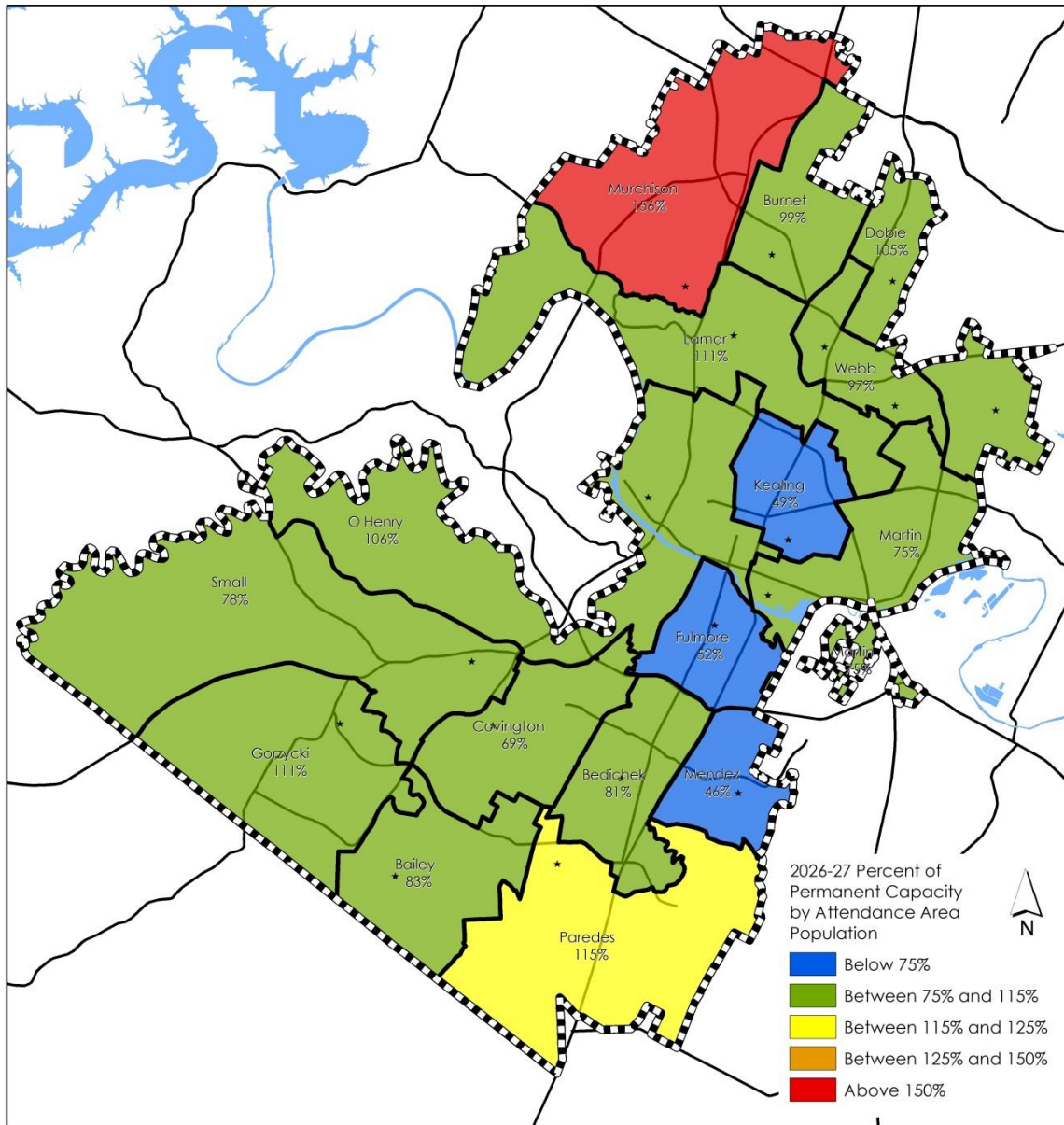
2021-22 Middle School

Murchison (134%), Dobie (121%) and Paredes (117%) are above the target range

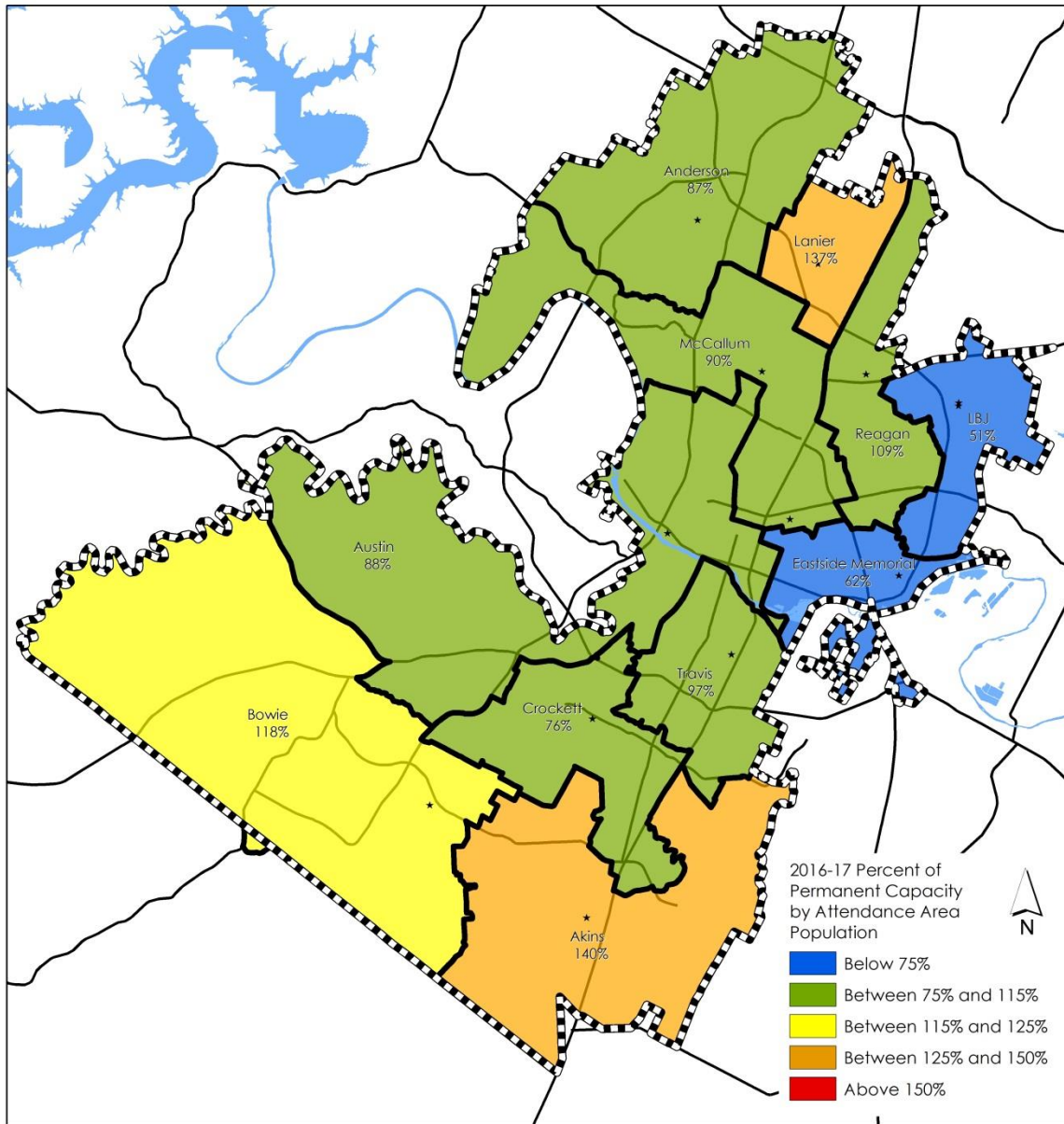
Bailey, Small, Bedichek, Martin, Gorzycki, O. Henry, Webb, Burnet and Lamar are within the target range

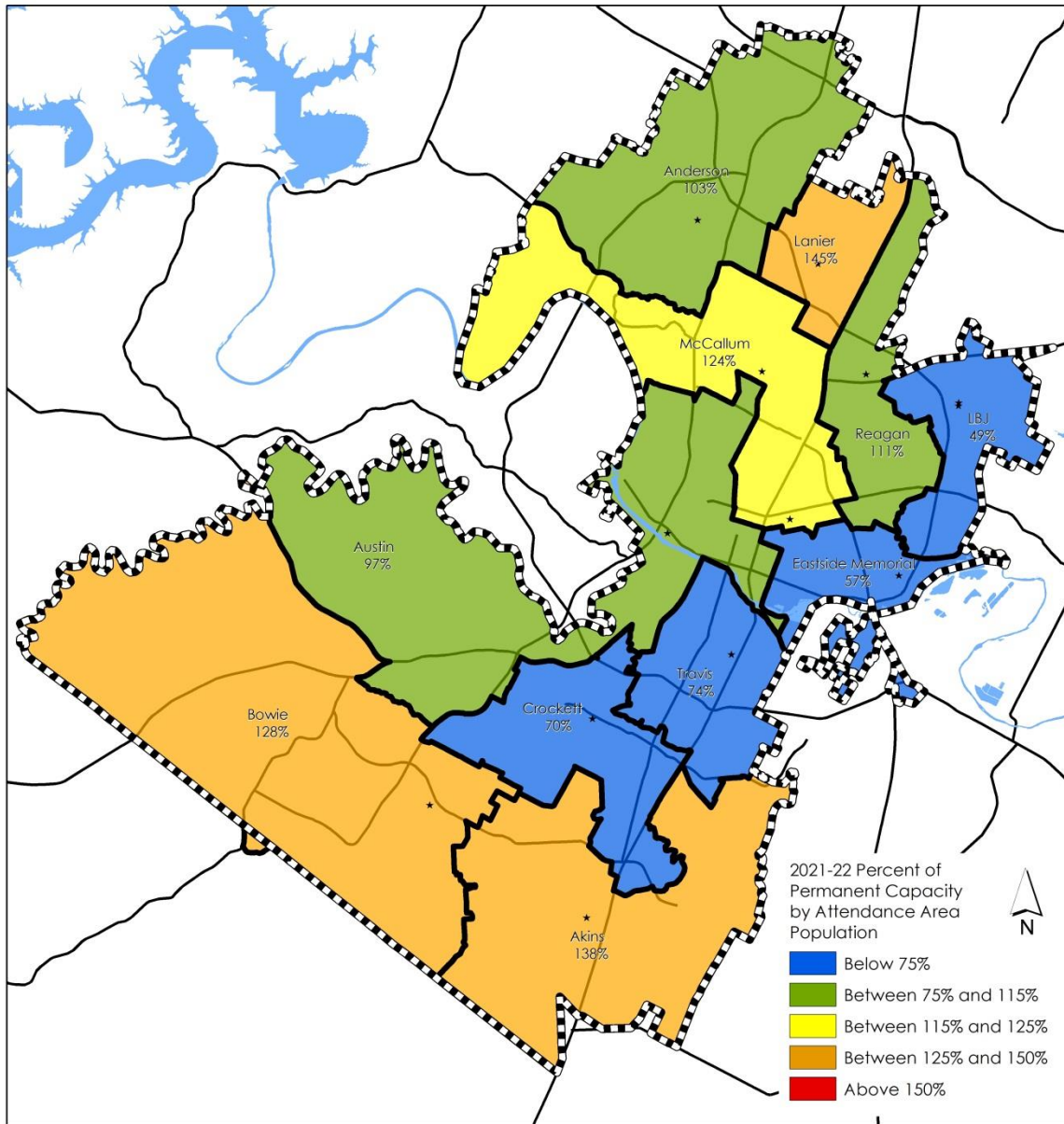
Kealing (without magnet students), Mendez, Fulmore (without magnet students) and Covington are below the target range

2026-27 Middle Schools



2016-17 High Schools





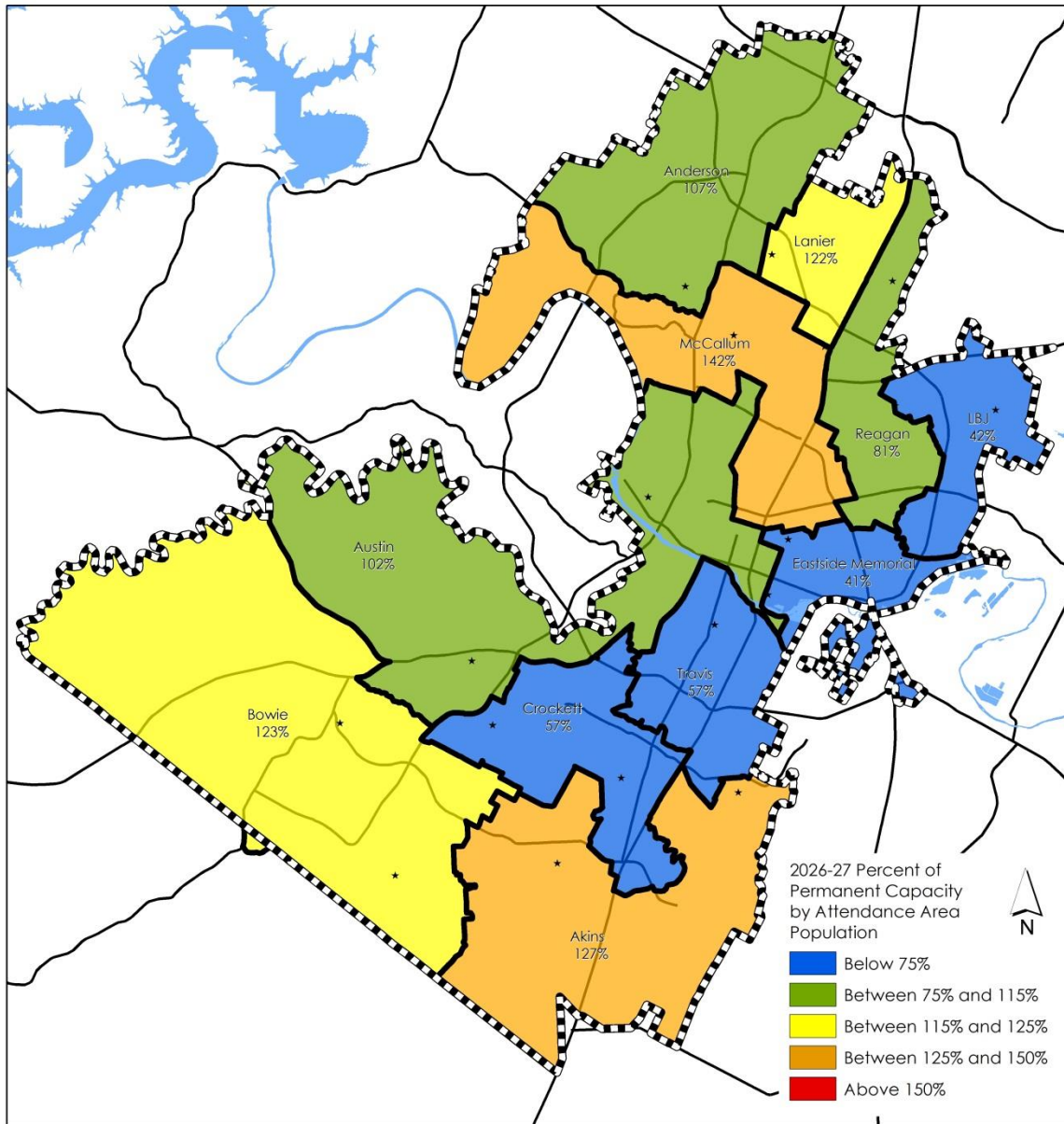
2021-22 High School

Lanier (145%), Akins (138%), Bowie (128%) and McCallum (124%) are above the target range

Austin, Anderson and Reagan are within the target range

LBJ (without LASA students), Eastside (without International HS students), Crockett and Travis are below the target range

2026-27 High Schools



-
- ▶ What questions does the Board have regarding the findings of the report, housing trends, or impact of the student population projections on AISD facilities?