



Boundary Advisory Committee

Thursday, October 4, 2018

6:00 PM – 8:00 PM

Performing Arts Center, Multipurpose Room

1500 Barbara Jordan Blvd, Austin TX 78723

Purpose and Responsibilities:

The purpose of the Boundary Advisory Committee (BAC) is to assist in developing recommendations for the creation of, and adjustment to, school attendance area boundaries.

To accomplish its purpose, the BAC shall advise the Superintendent who will develop a recommendation to the Board on the following boundary-related activities which may include, but are not limited to:

1. Developing the criteria for evaluating boundary proposals.
2. Creating attendance areas for new school facilities.
3. Reviewing and advising the administration on the development of facility-related contingency plans due to school performance issues.
4. Repurposing or consolidation of existing school facilities.
5. Providing advisory input, as appropriate, during the preparation and a bi-annual review of the Facility Master Plan with the Board of Trustees and the Superintendent.
6. Planning and conducting stakeholder engagement activities, and gathering and assessing stakeholder input.
7. Providing progress reports and formal recommendations to the Superintendent.
8. Completing other projects as assigned by the Superintendent or raised by the FABPAC.

Time	Agenda Item	Presenter	Strategic Plan Commitments
6:00	Call to order <ul style="list-style-type: none">• Welcome and introductions• Review agenda and meeting goals• Designate time keeper	Co-chairs	
6:05	Public comment	Public	9
6:15	Approval of minutes (09/06/2018)	Co-chairs	9
6:20	Request for boundary process subcommittee members	Melissa Laursen	9
6:25	Presentation of preliminary enrollment data - gains and losses	Beth Wilson	9, 10
6:45	Discuss creation of joint working group between BAC, FABPAC Equity Subcommittee, BFAC and BSTF to explore equity, diversity and utilization in relation to boundary changes and transfer policies	Beth Wilson	9, 10
7:05	Discuss potential boundary change for Franklin Grove development	Melissa Laursen	9, 10
7:45	Wrap up <ul style="list-style-type: none">• Parking lot items• Requests for information• Future meeting dates and agenda items	Co-chairs	9
8:00	Adjourn	Co-chairs	

The Boundary Advisory Committee may take action during the meeting as it clearly and directly relates to any agenda item on the table at the time, as determined by the presiding officer.

Note: Strategic Plan can be viewed on the district's website at: <http://www.austinisd.org/strategicplan>

Boundary Advisory Committee (BAC)

Meeting Summary

September 6, 2018

Committee Members in Attendance

Andy Anderson, co-chair
Laura Arellano
Ronnie Burt
Genevieve Dell
Meghan Dougherty
Lindsay Fitzpatrick
Deanna Mercer
Melanie Plowman, co-chair
Eric Ramos
John Rocha
Emily Vitris
Patricia Williams

Staff Members in Attendance

Melissa Laursen
Beth Wilson

Visitors

None

I. Call to order

Co-chair Andy Anderson called the meeting to order at 6:08 pm. The agenda was reviewed with the committee. New members were welcomed to the committee.

II. Public Comment

None.

III. Approval of minutes (2/13/18)

The minutes from February 13, 2018 were approved as presented.

IV. Election of co-chairs

There were two nominees, Andy Anderson and Melanie Plowman, who were elected as co-chairs.

V. Review preliminary enrollment data and discuss future work plan

The committee reviewed preliminary enrollment data to determine whether there were any significant changes in enrollment since last school year that could be balanced through a boundary change. Final enrollment snapshot will be taken on October 26, 2018. Day 10 preliminary data indicates a decline in enrollment from Day 10 the previous school year. This decline is most significant at the elementary level. Planning staff also provided an update on several bond projects that will add capacity to the

following schools that are currently overcrowded: Hill ES, Doss ES, Kiker ES, Baranoff ES, Blazier ES, Menchaca ES, Murchison MS, and Bowie HS. The BAC supports staff's recommendation to begin a boundary process in January to establish a new attendance area for the new southwest elementary school, and investigate other boundaries in the region. This recommendation will be communicated to the Superintendent for feedback.

Requests for Information:

- Sort *Percentage of Capacity by Enrollment* table by vertical team
- Prepare maps to illustrate enrollment gains and losses spatially

VI. Wrap-Up

Future Meeting Dates – September 18 is scheduled, staff will discuss the Superintendent's feedback with co-chairs to determine whether the feedback can be communicated through email, or if a meeting is needed.

Parking Lot Items – none

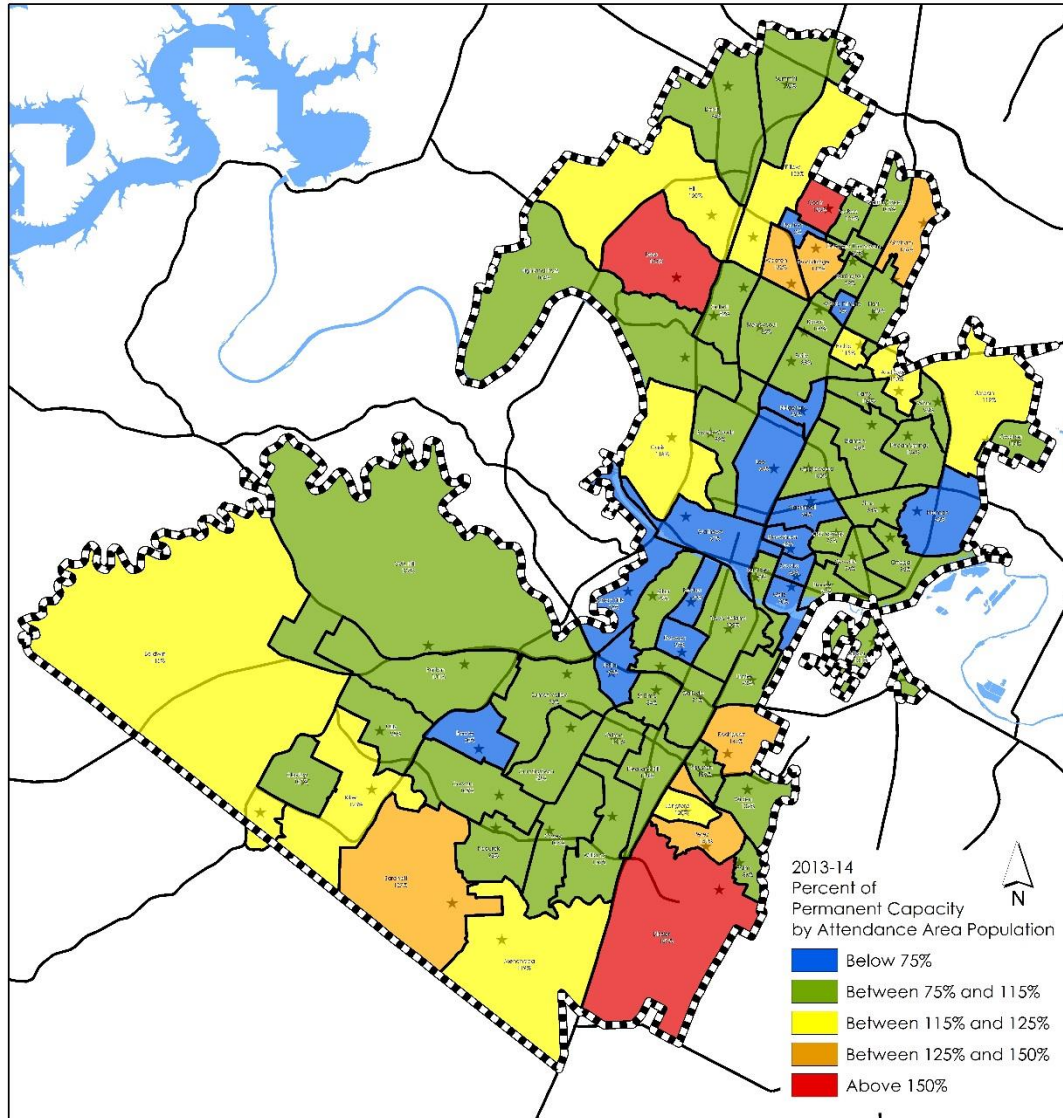
VII. Adjourn

Meeting was adjourned at 7:24 PM.

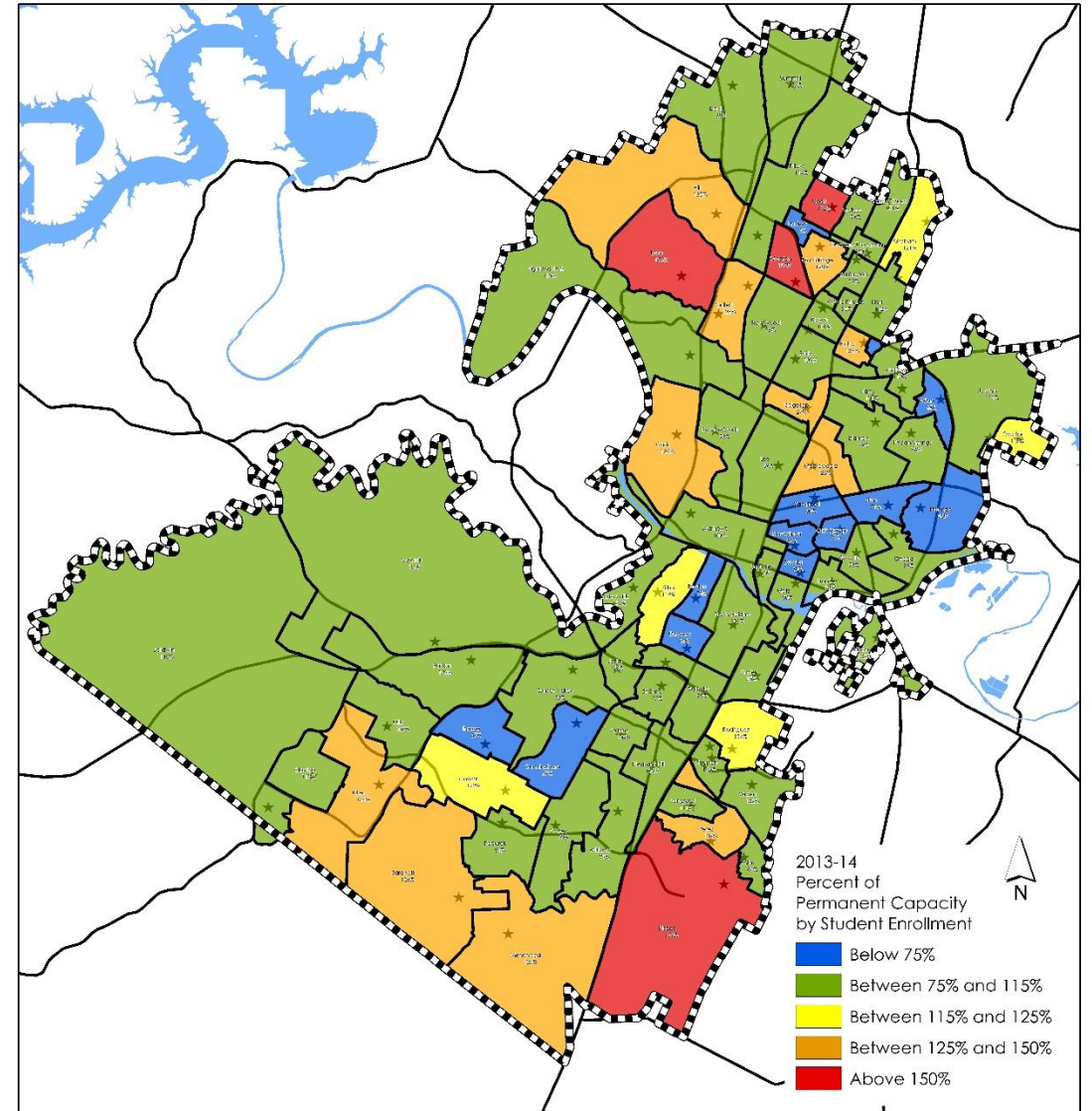
Elementary Schools

2013-14 Elementary Schools

Where students **live**

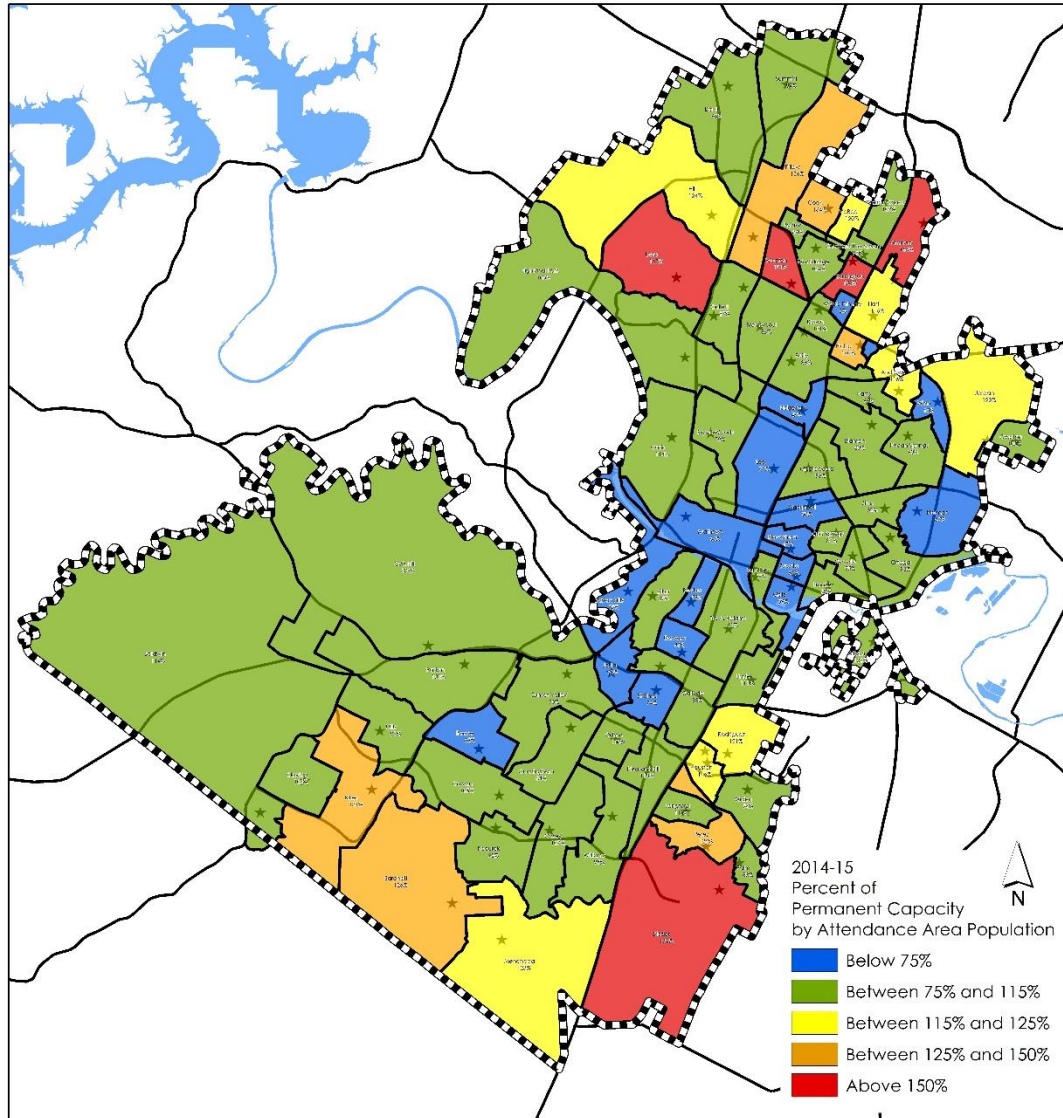


Where students **enroll**

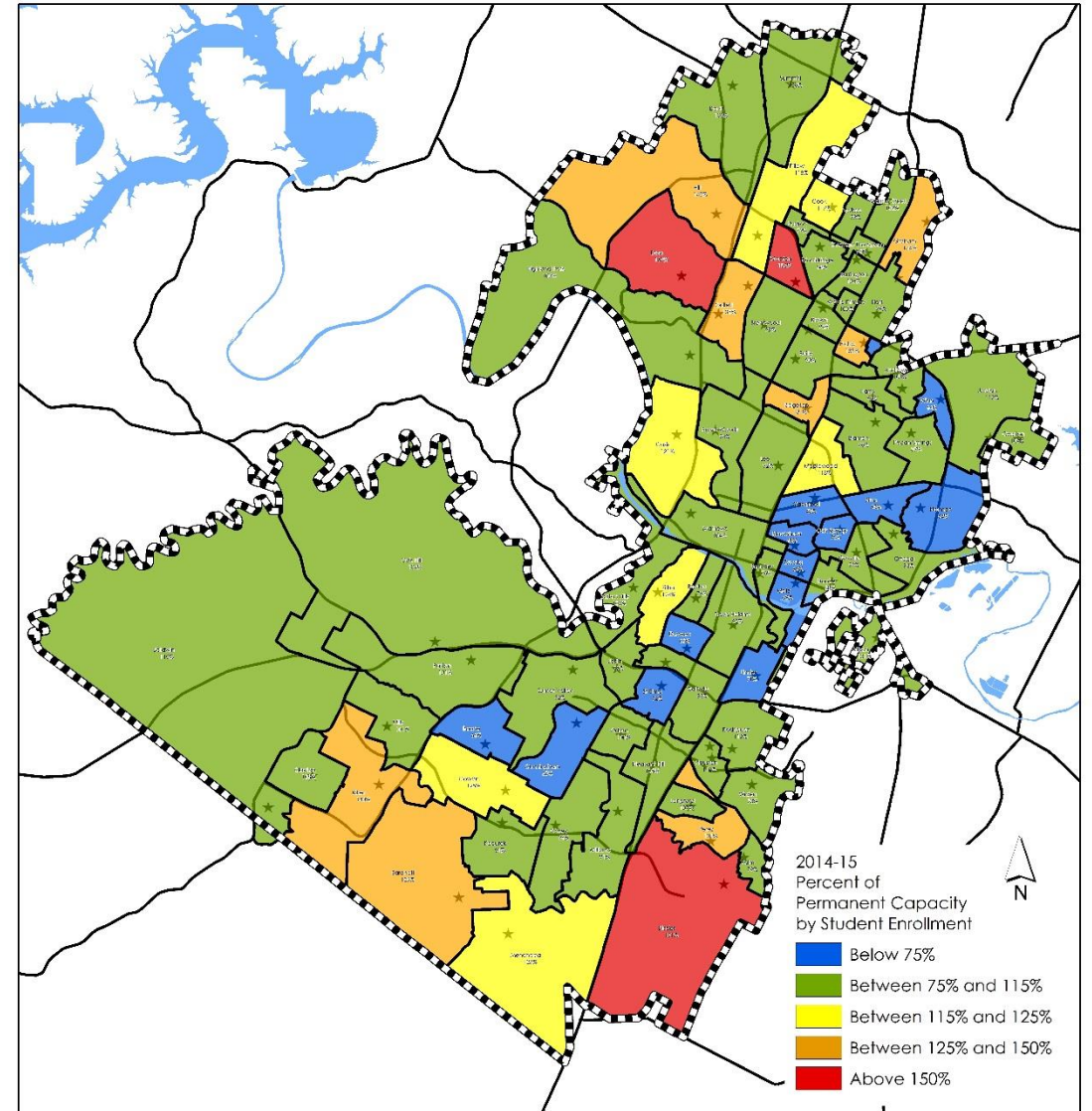


2014-15 Elementary Schools

Where students **live**

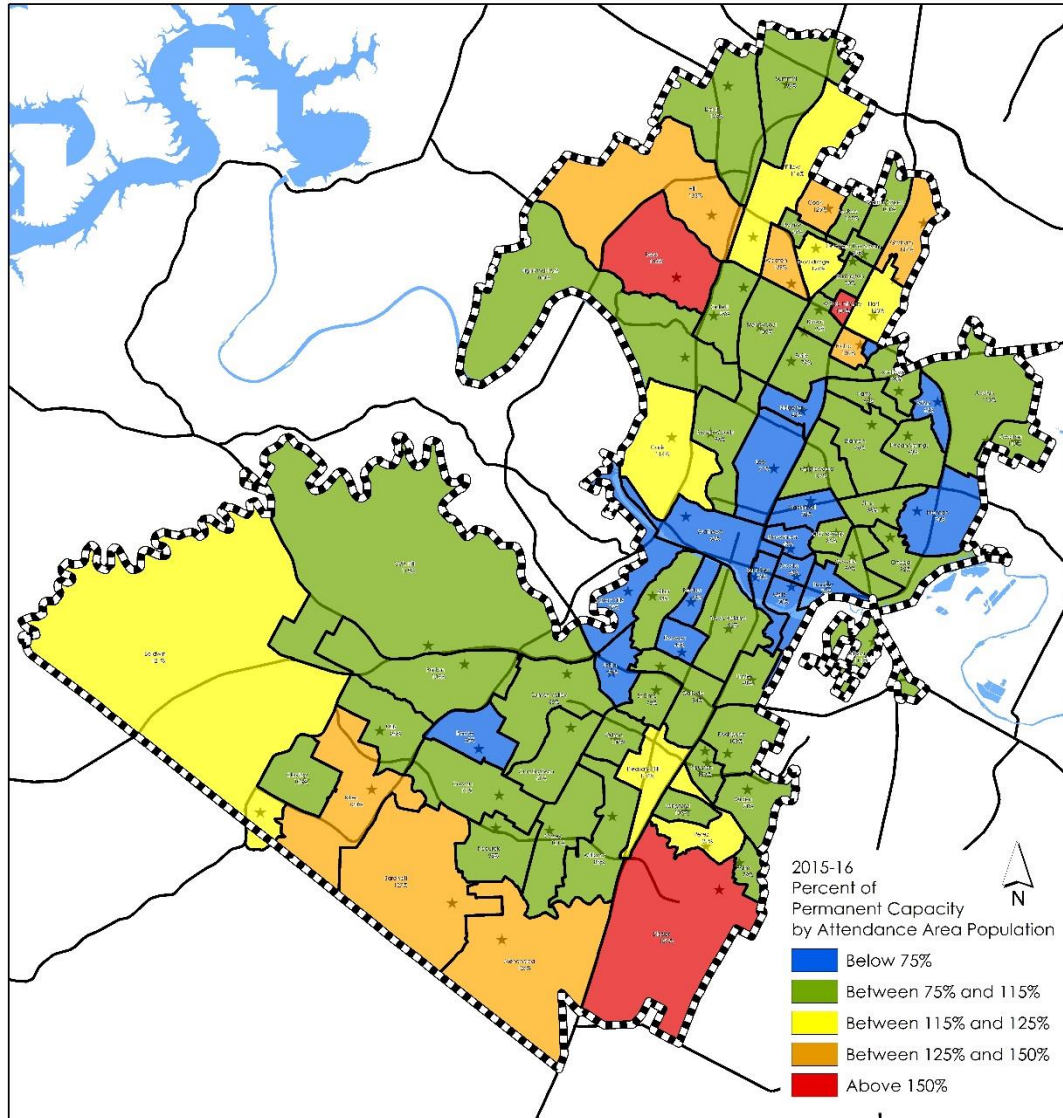


Where students **enroll**

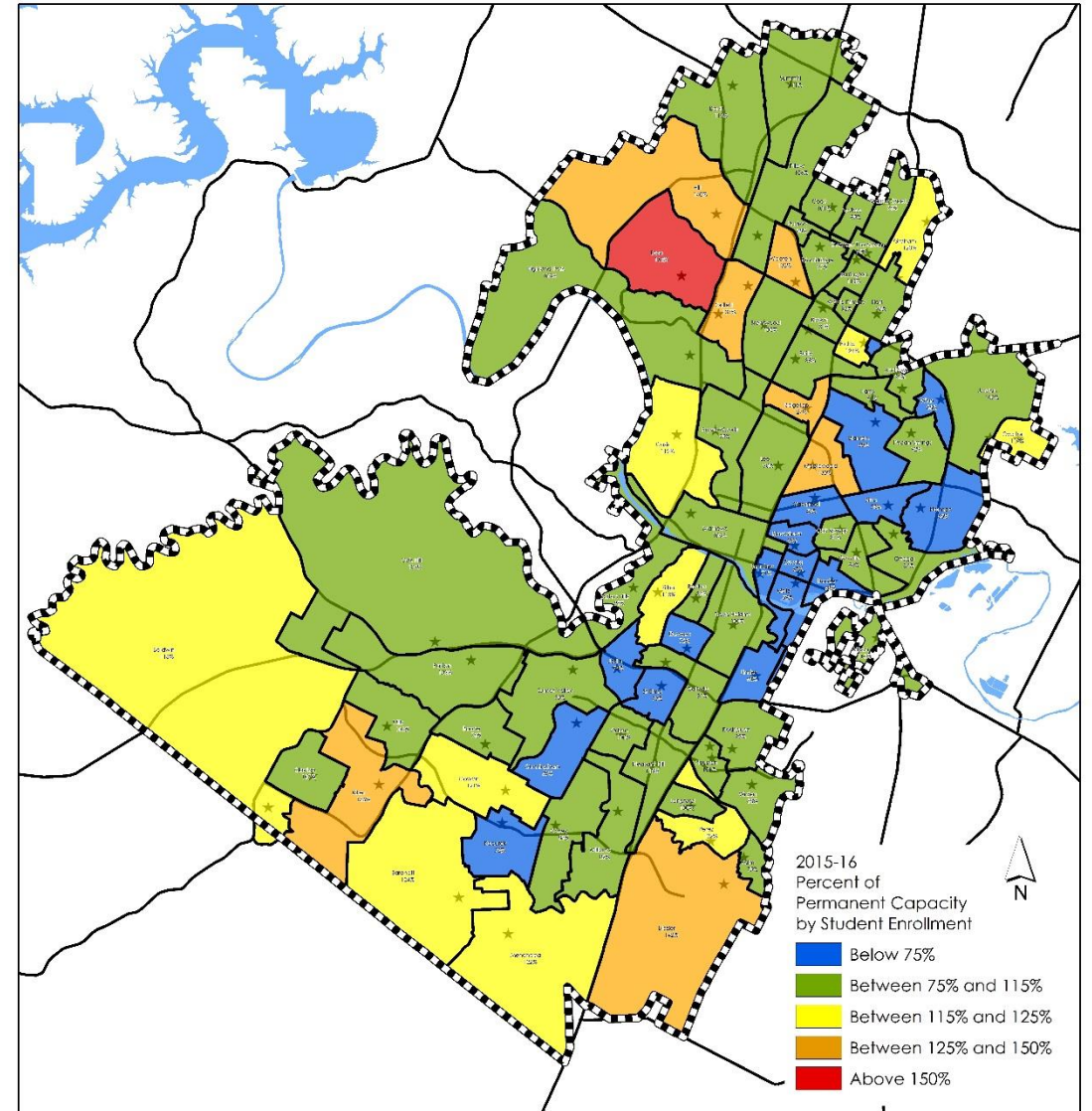


2015-16 Elementary Schools

Where students **live**

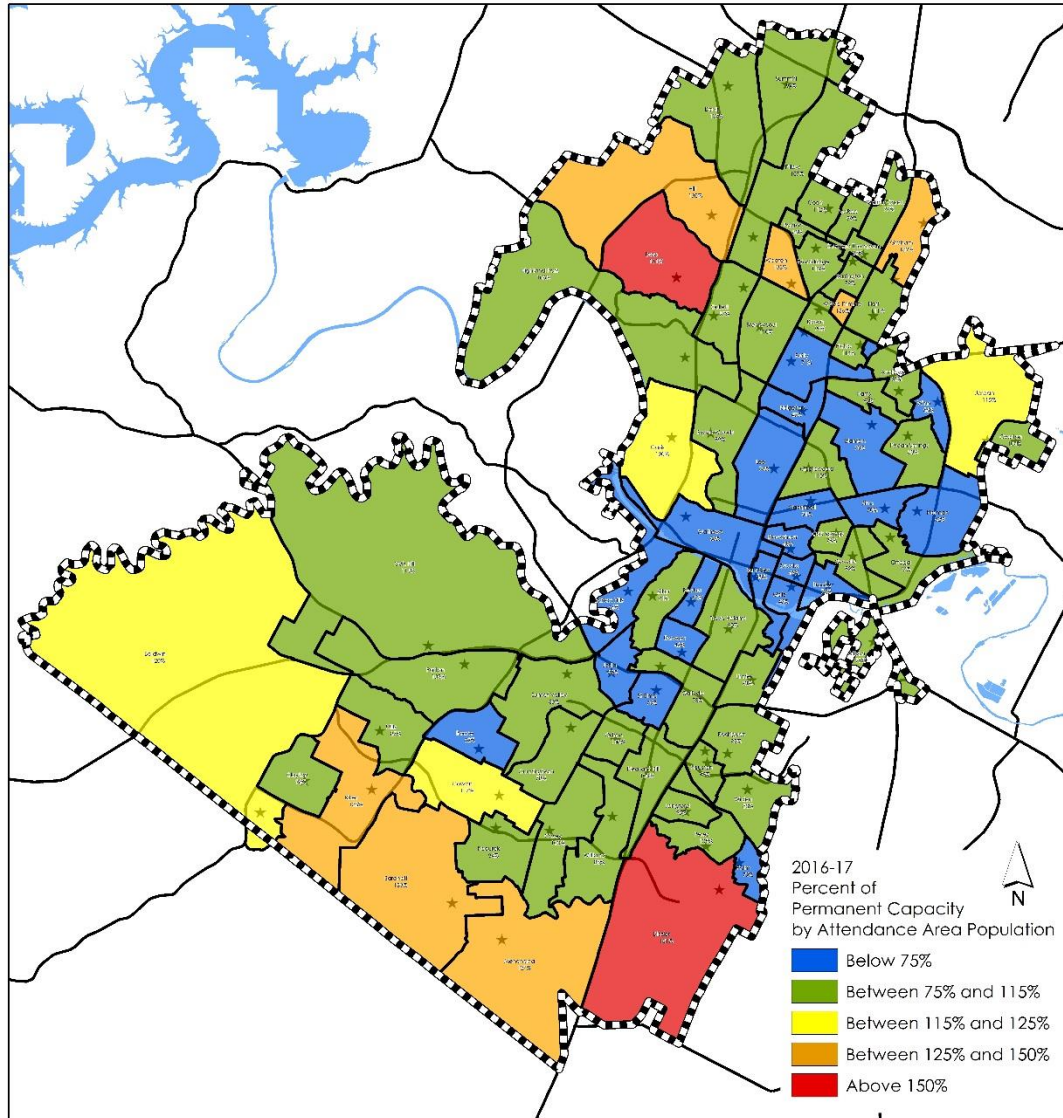


Where students **enroll**

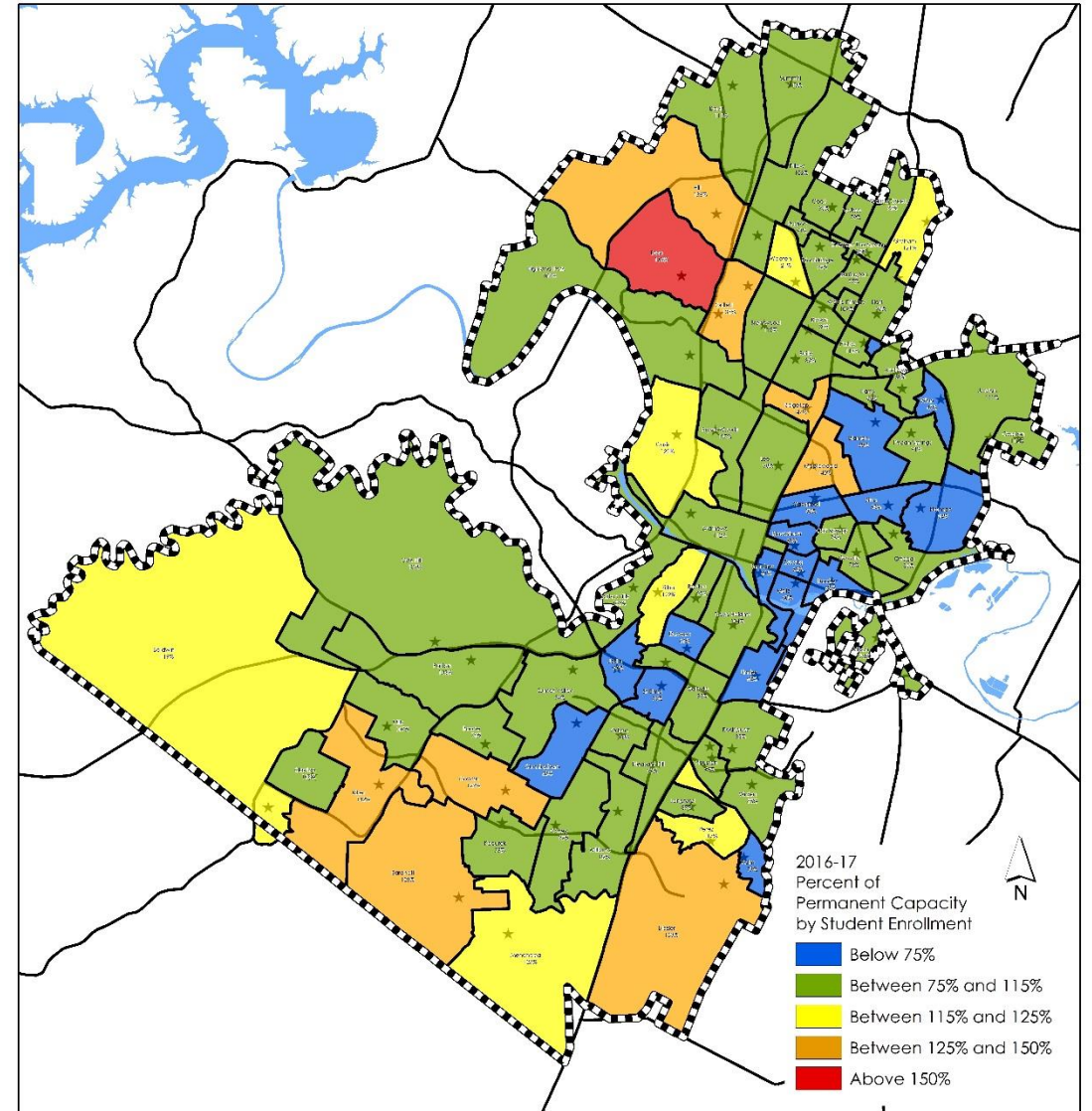


2016-17 Elementary Schools

Where students **live**

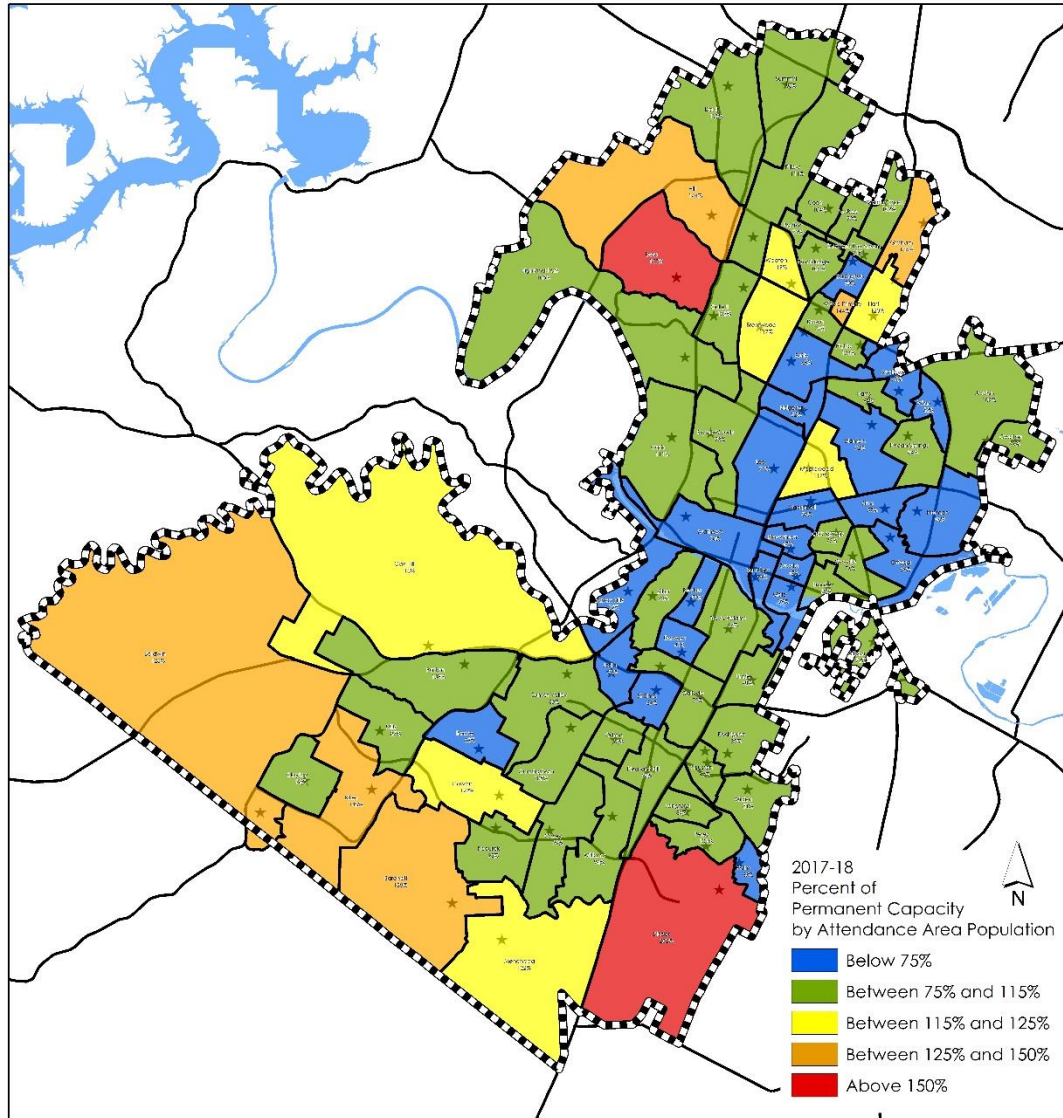


Where students **enroll**

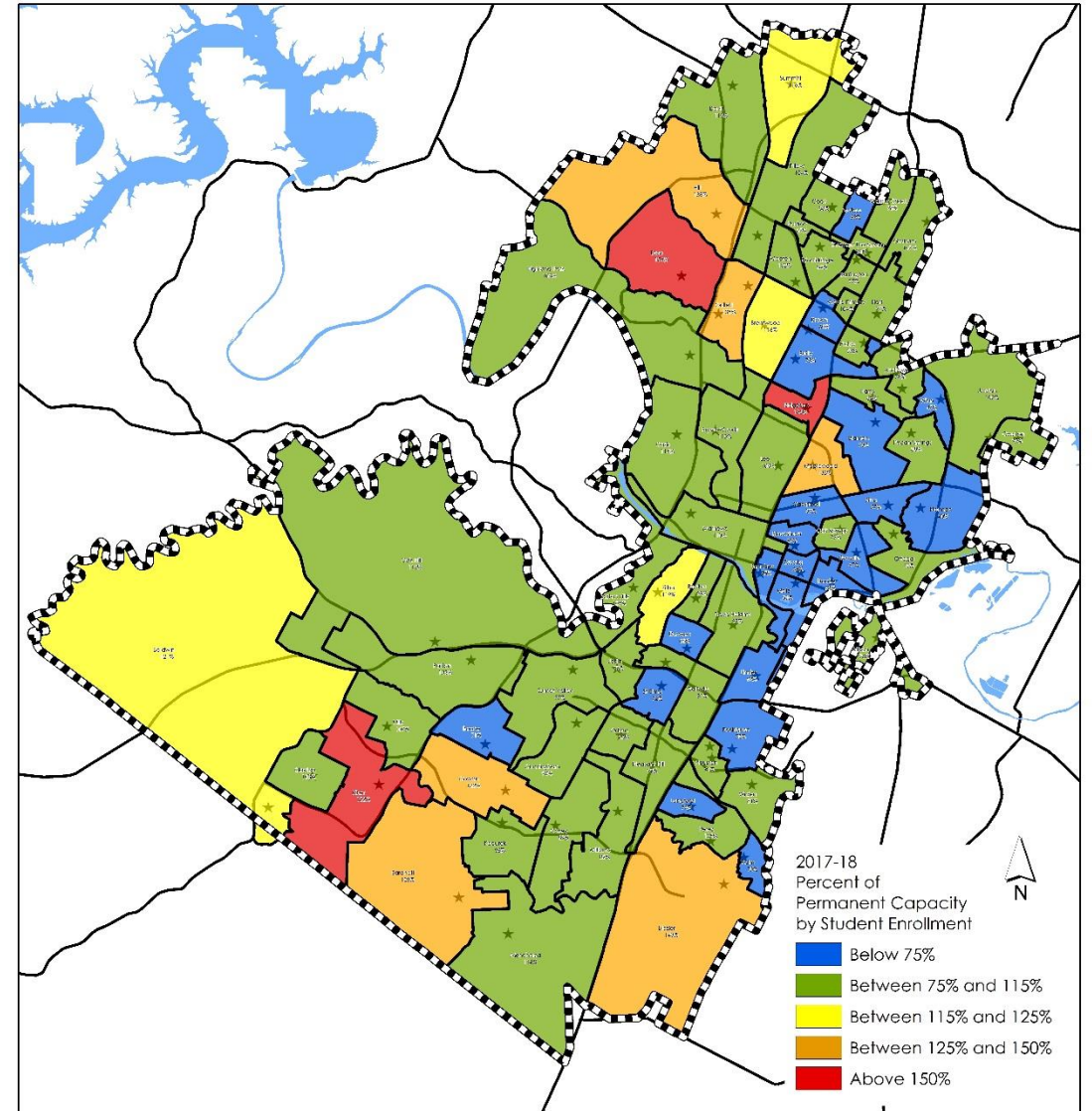


2017-18 Elementary Schools

Where students **live**



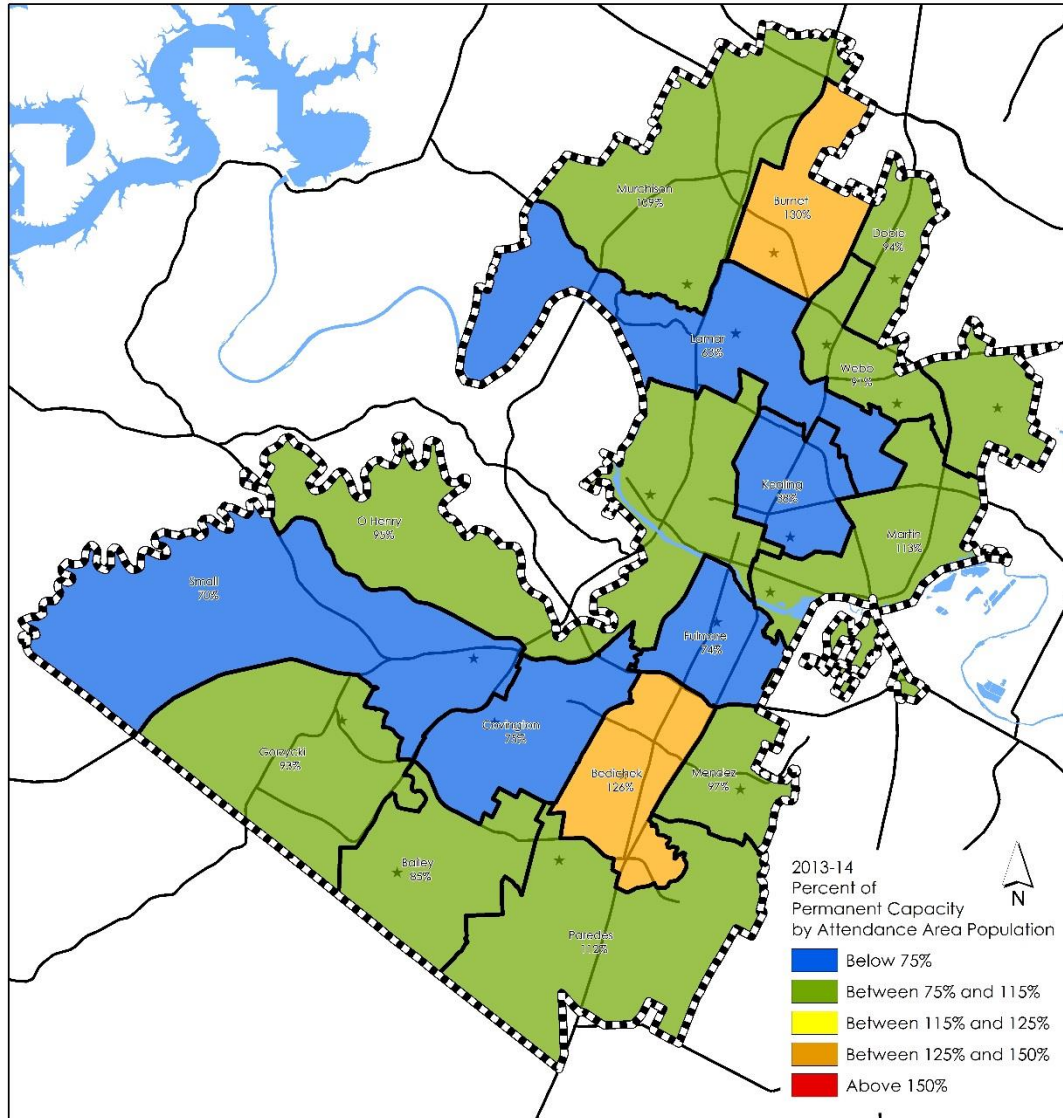
Where students **enroll**



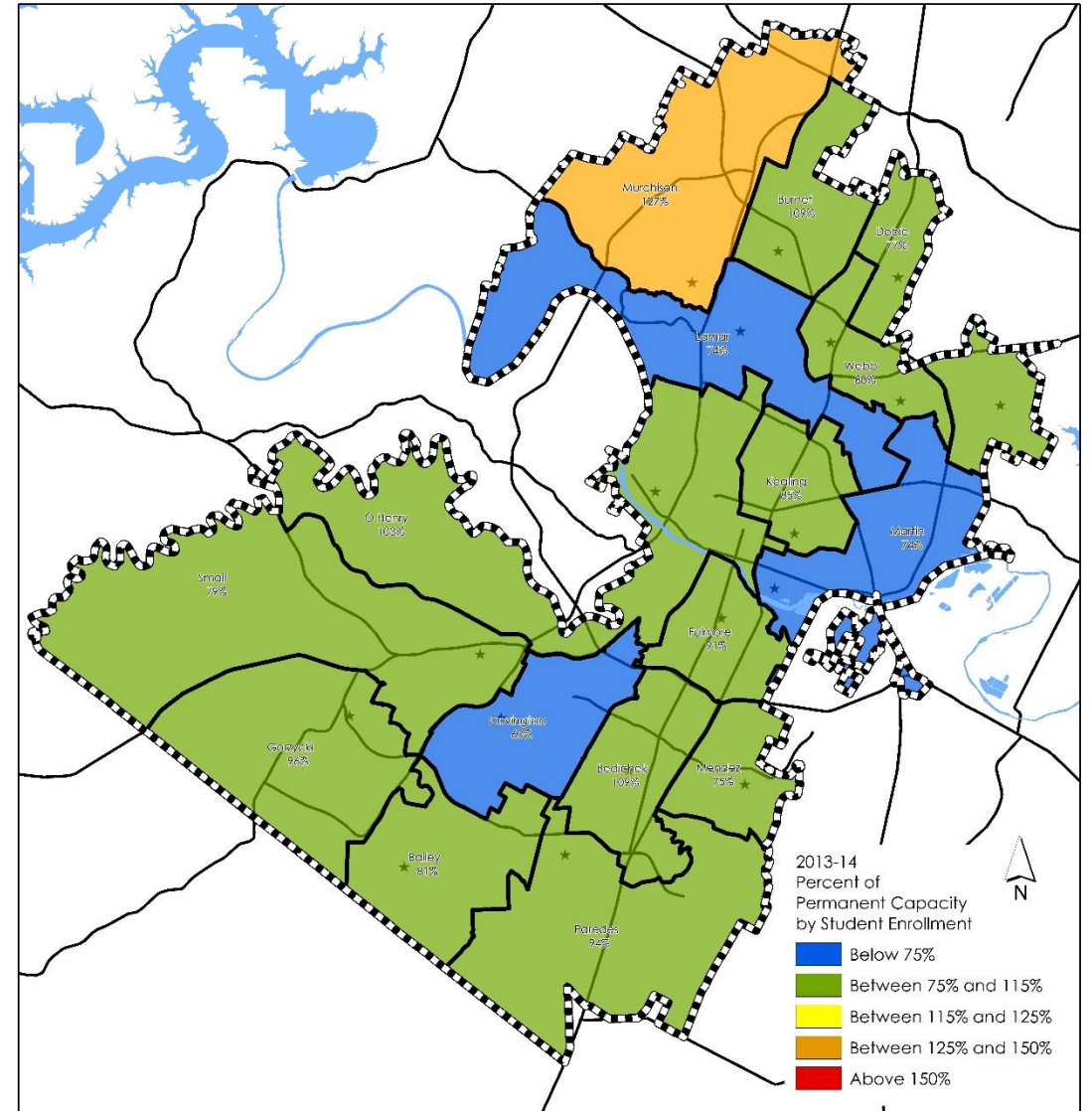
Middle Schools

2013-14 Middle Schools

Where students **live**

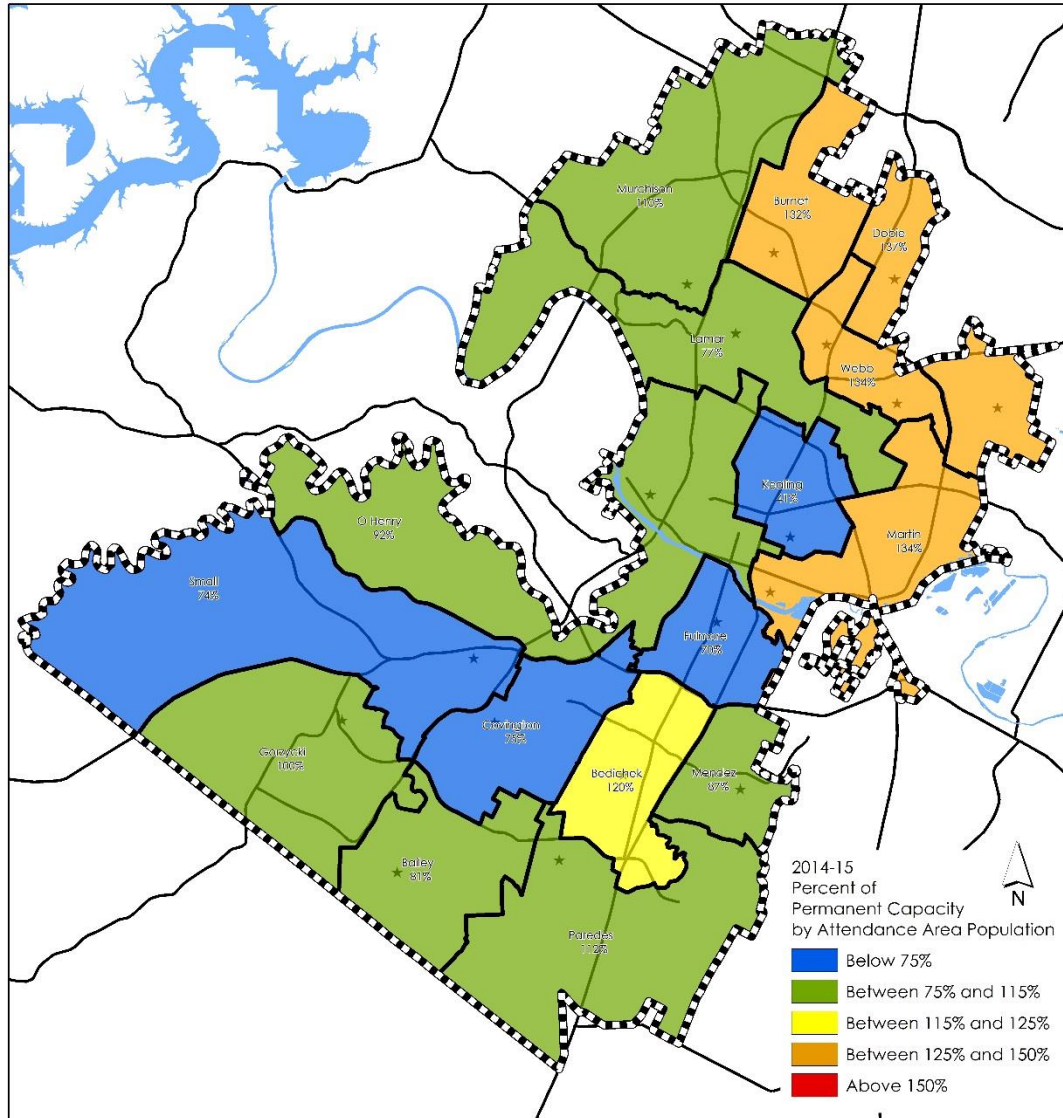


Where students **enroll**

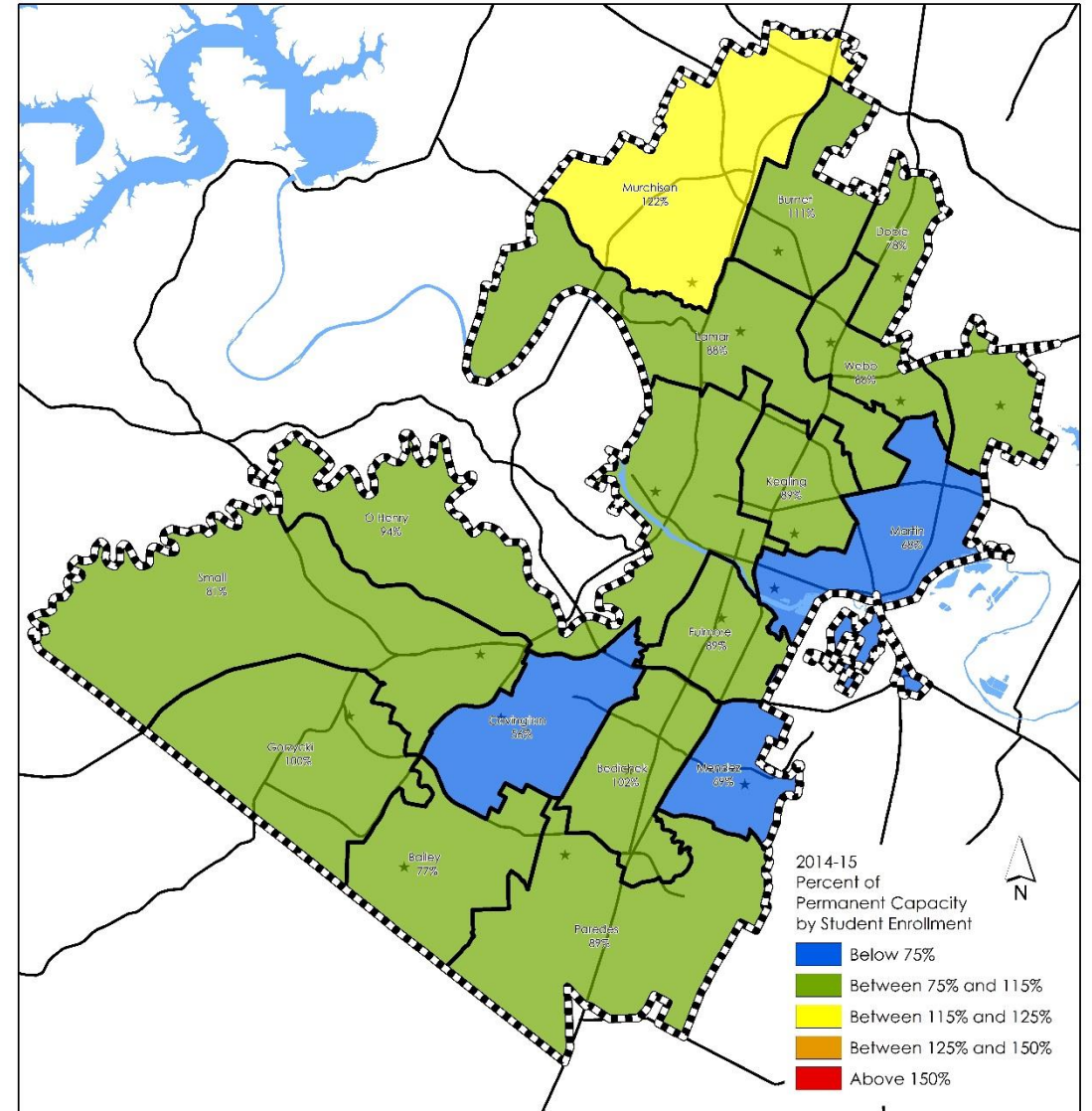


2014-15 Middle Schools

Where students **live**

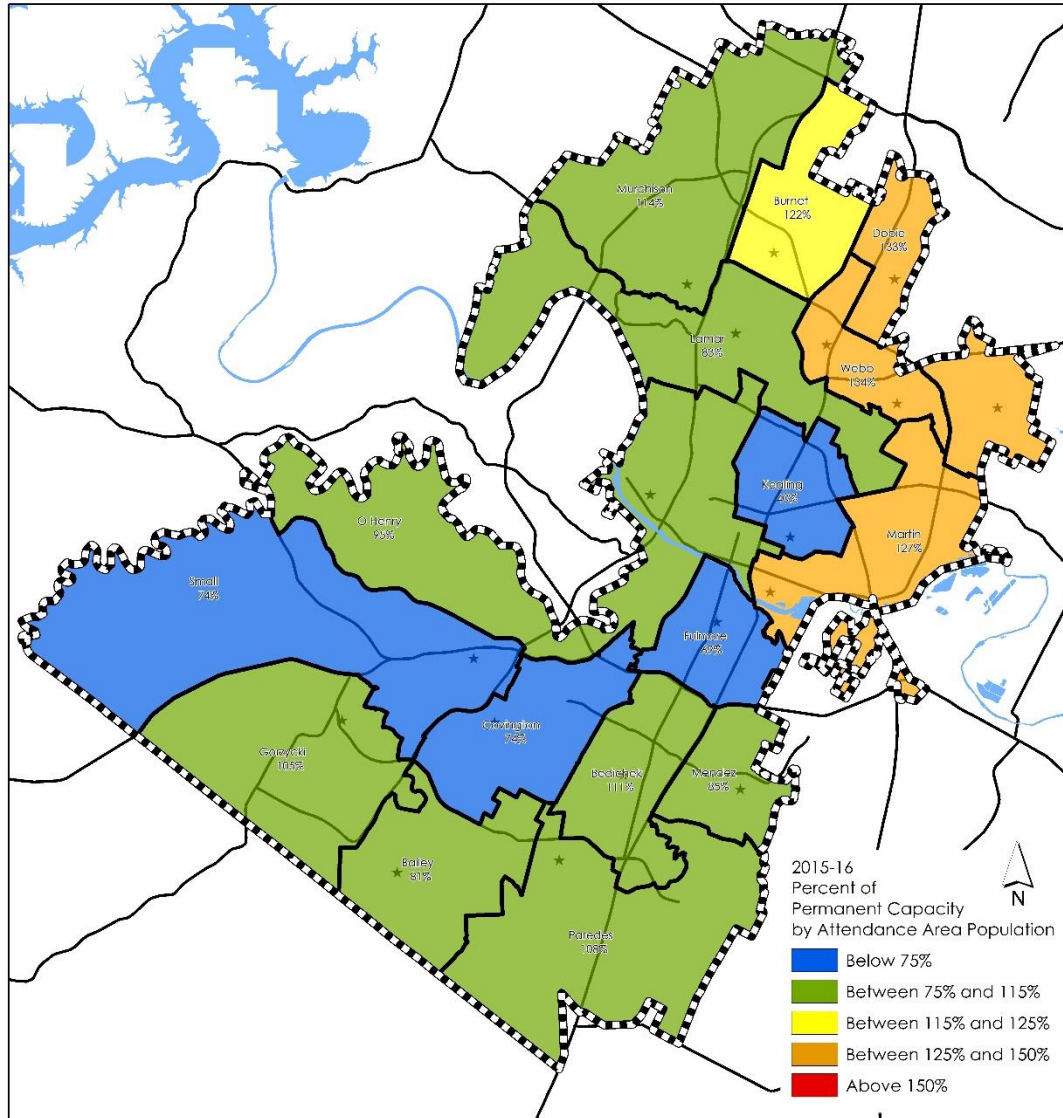


Where students **enroll**

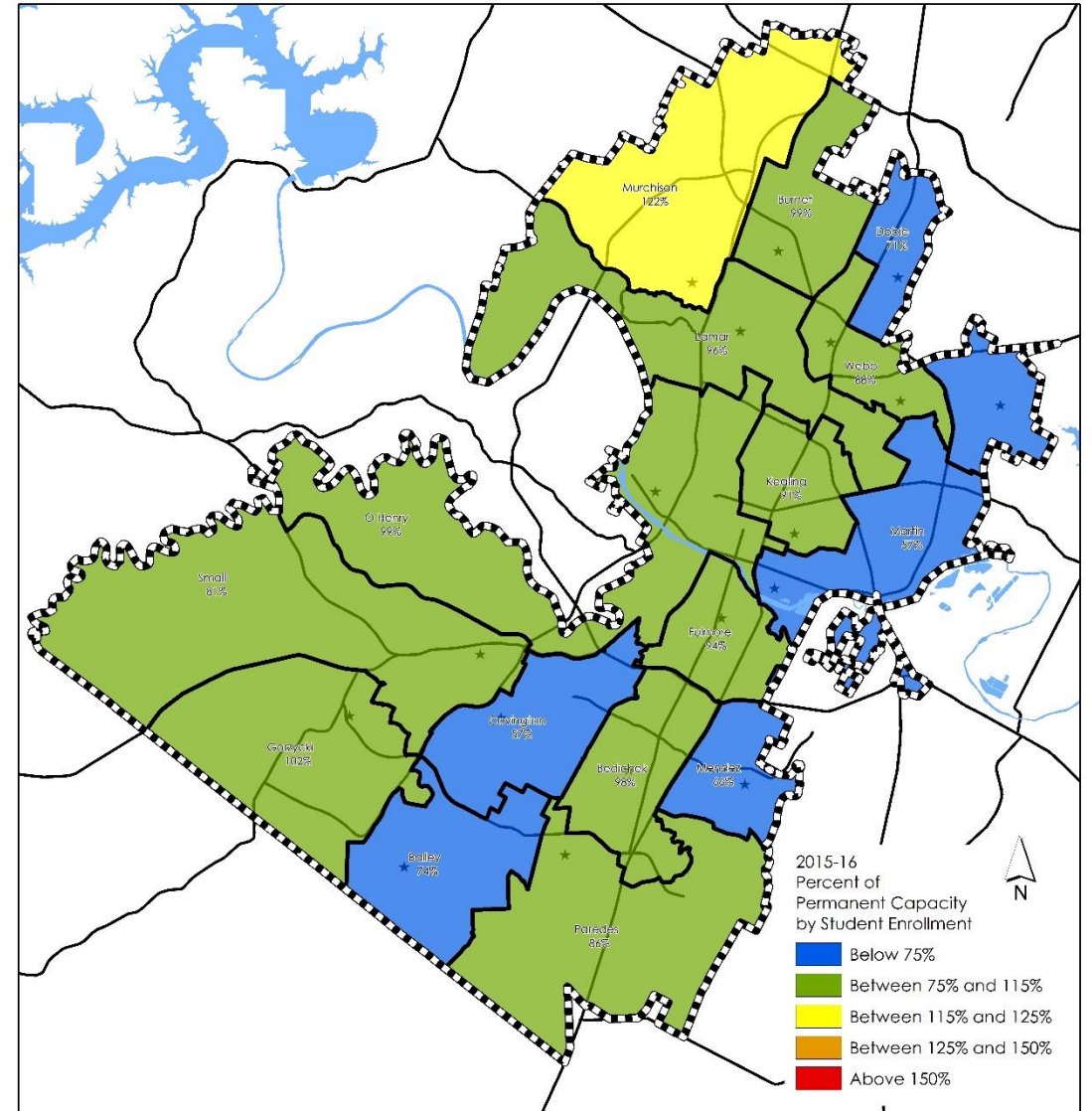


2015-16 Middle Schools

Where students **live**

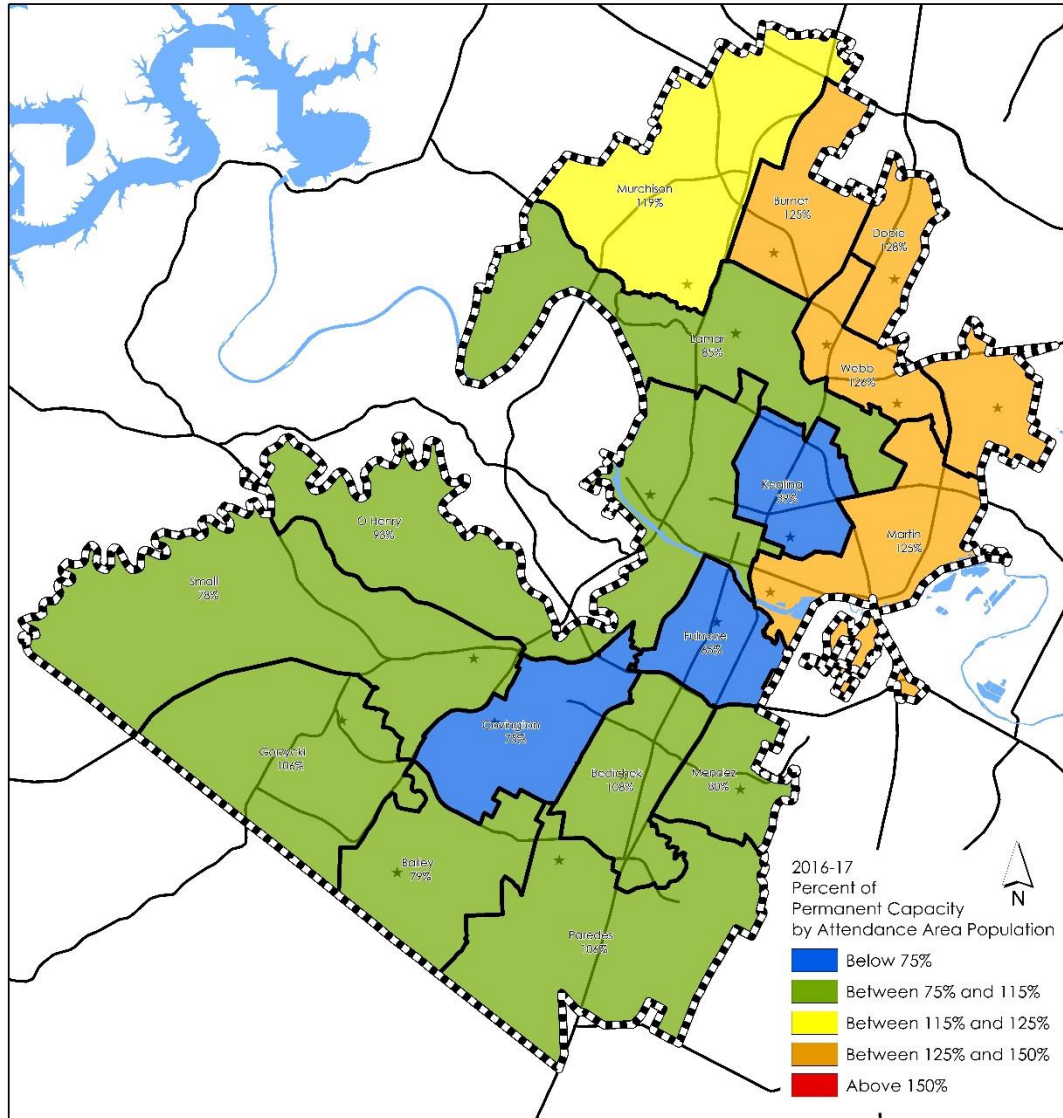


Where students **enroll**

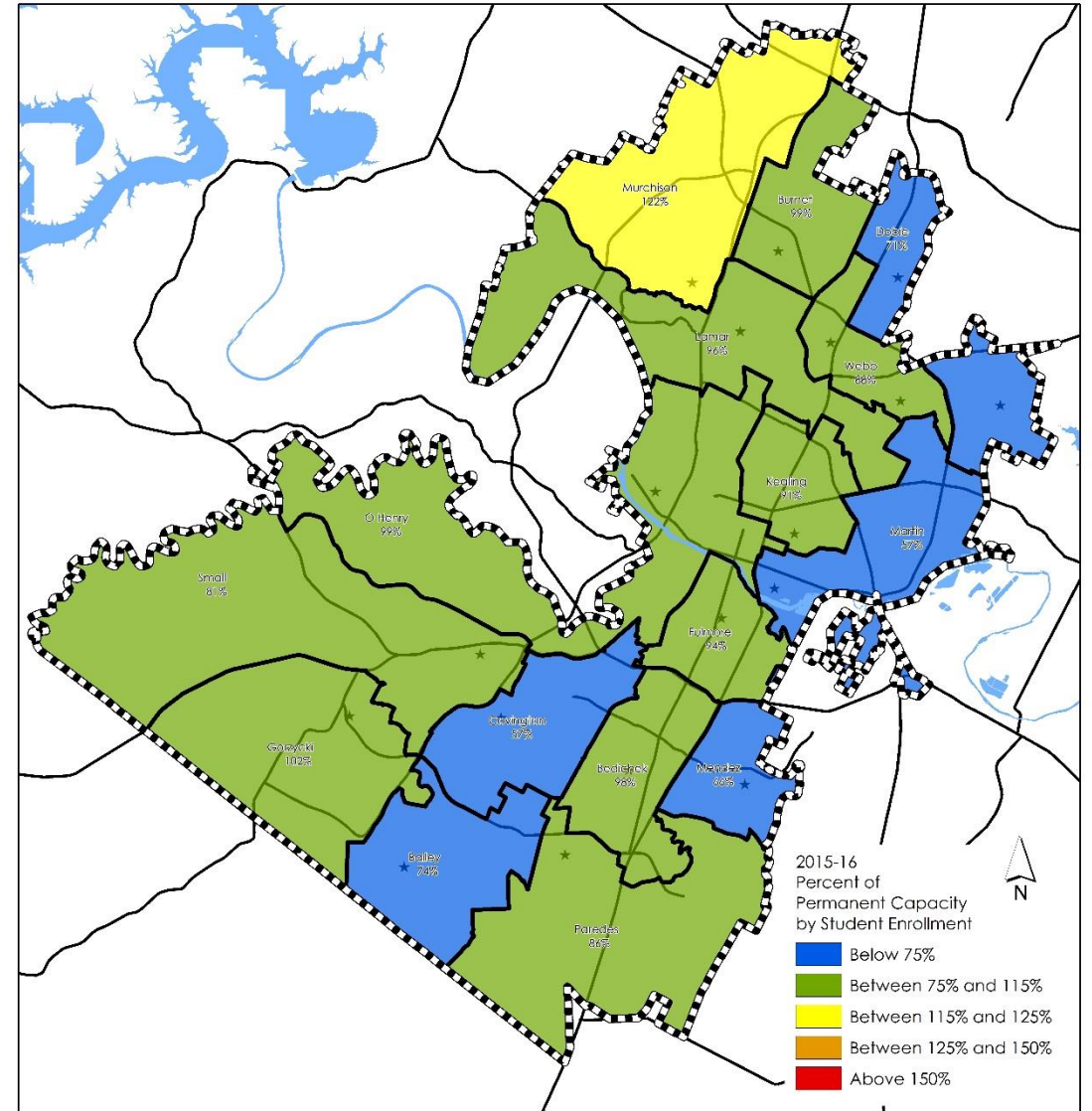


2016-17 Middle Schools

Where students **live**

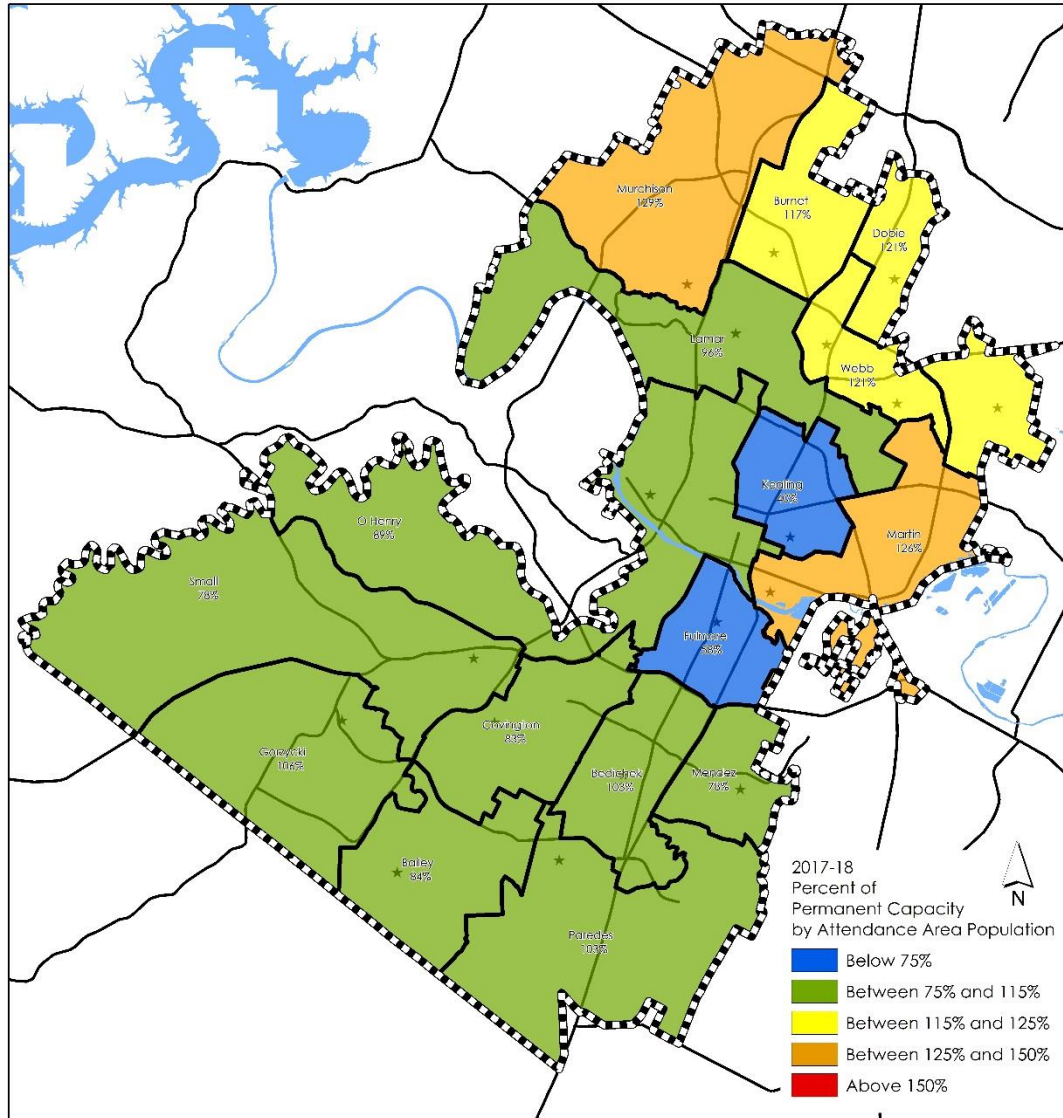


Where students **enroll**

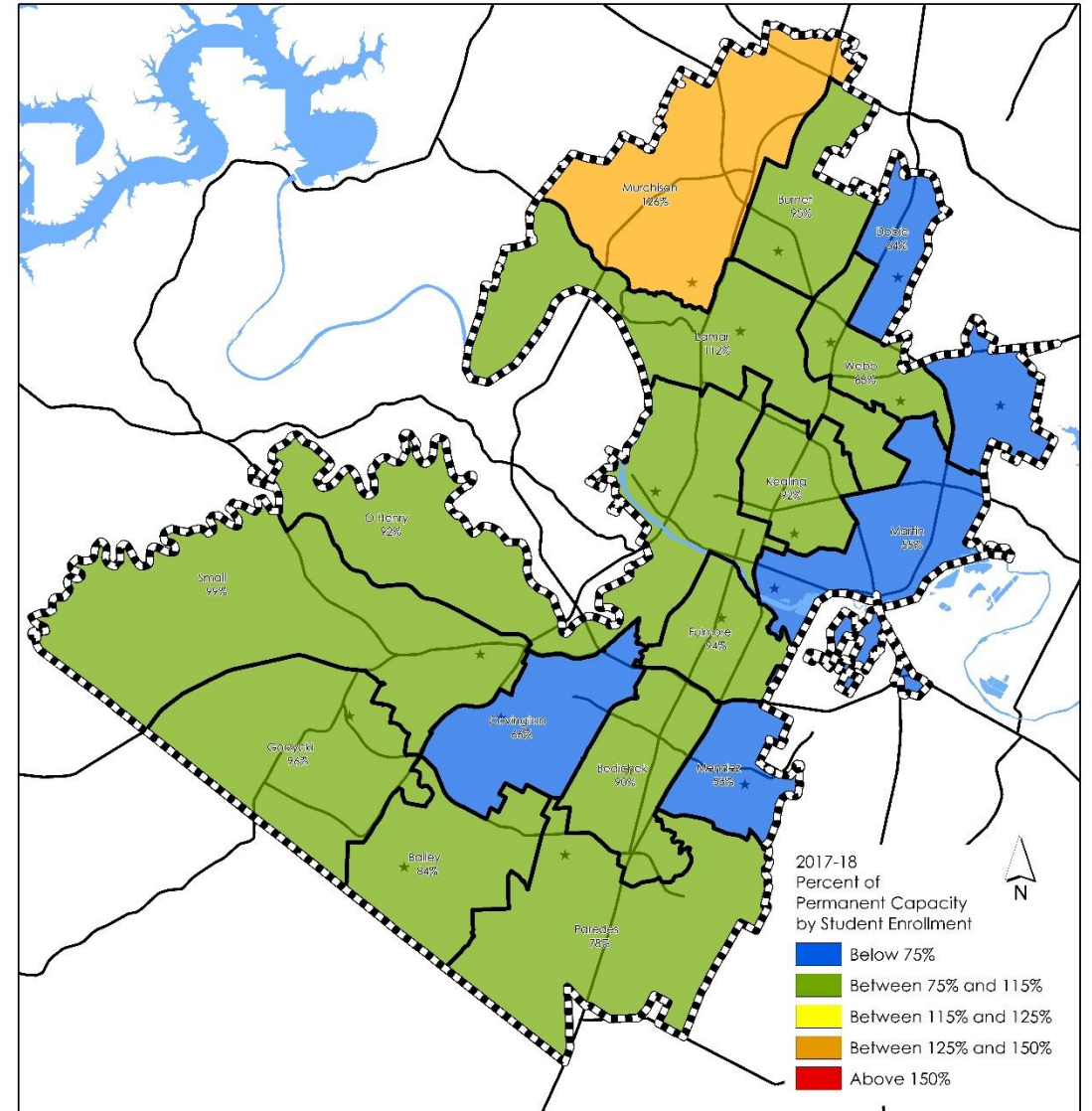


2017-18 Middle Schools

Where students **live**



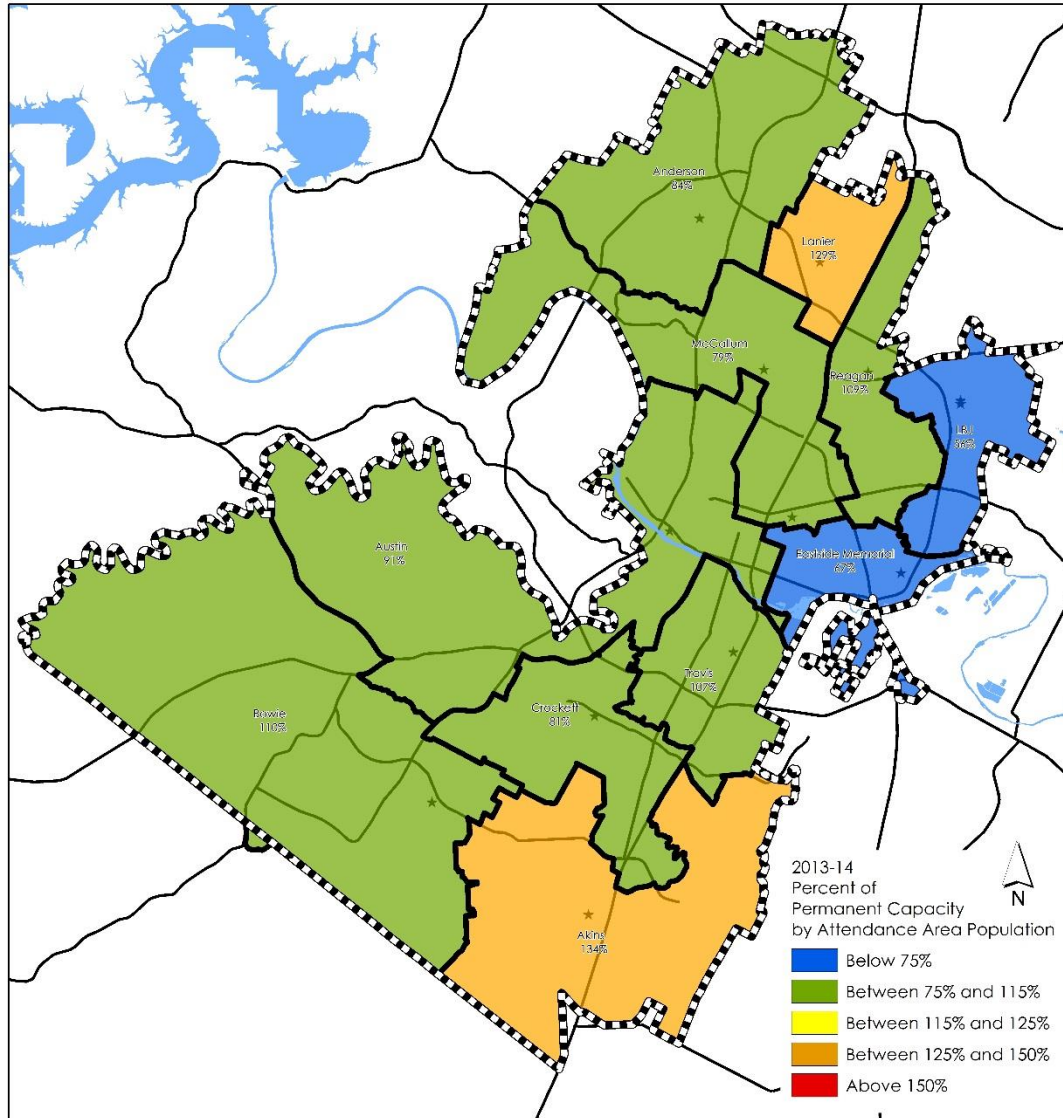
Where students **enroll**



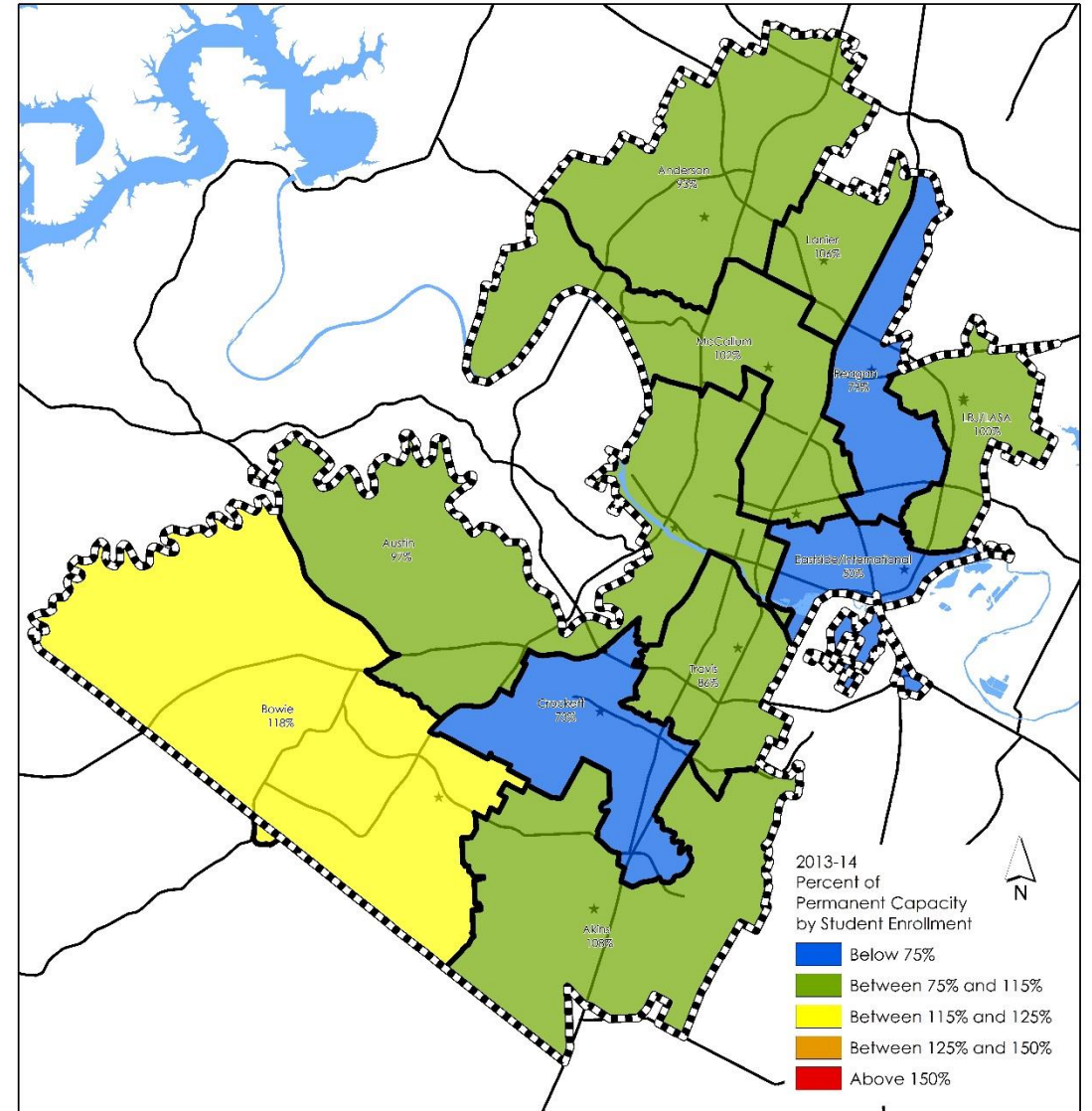
High Schools

2013-14 High Schools

Where students **live**

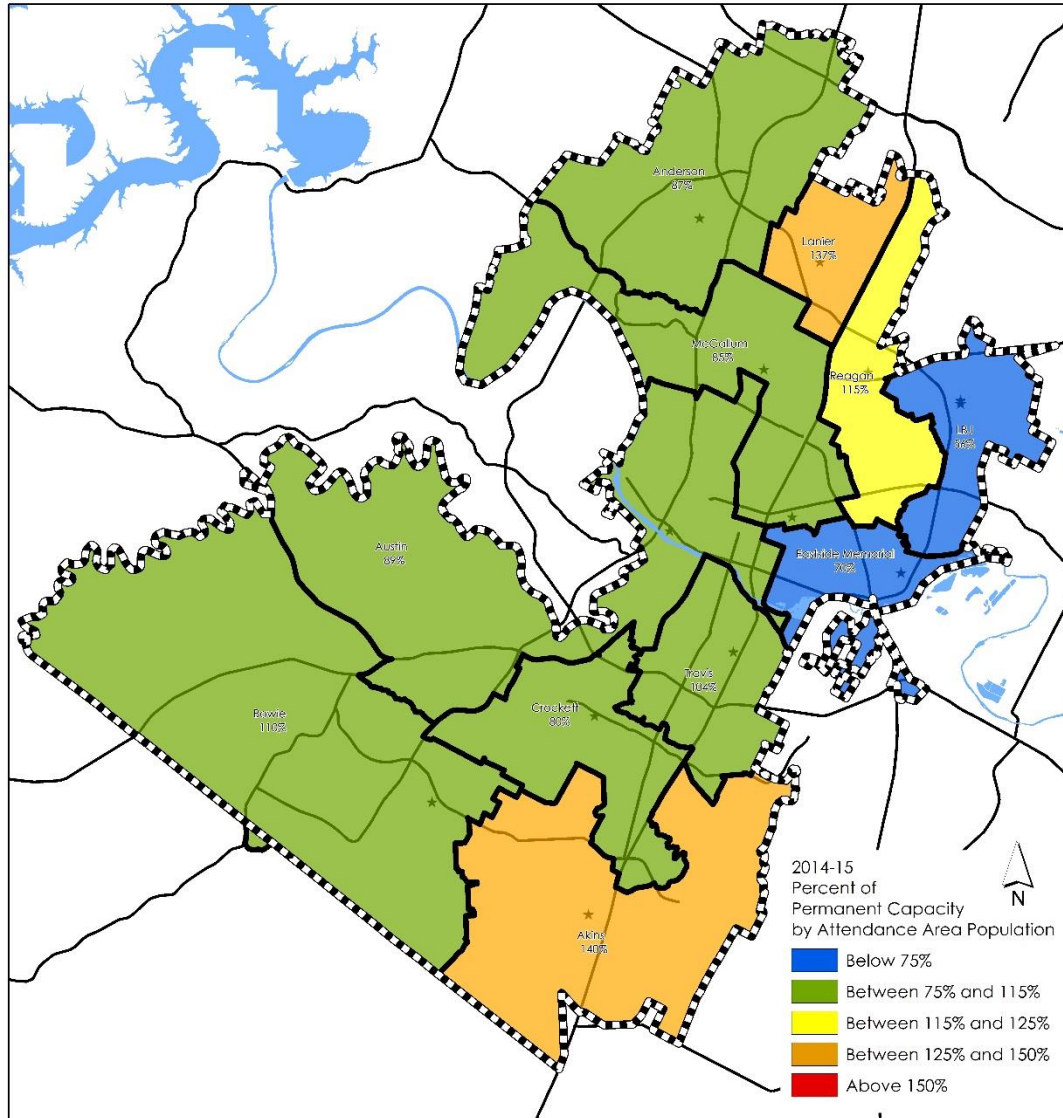


Where students **enroll**

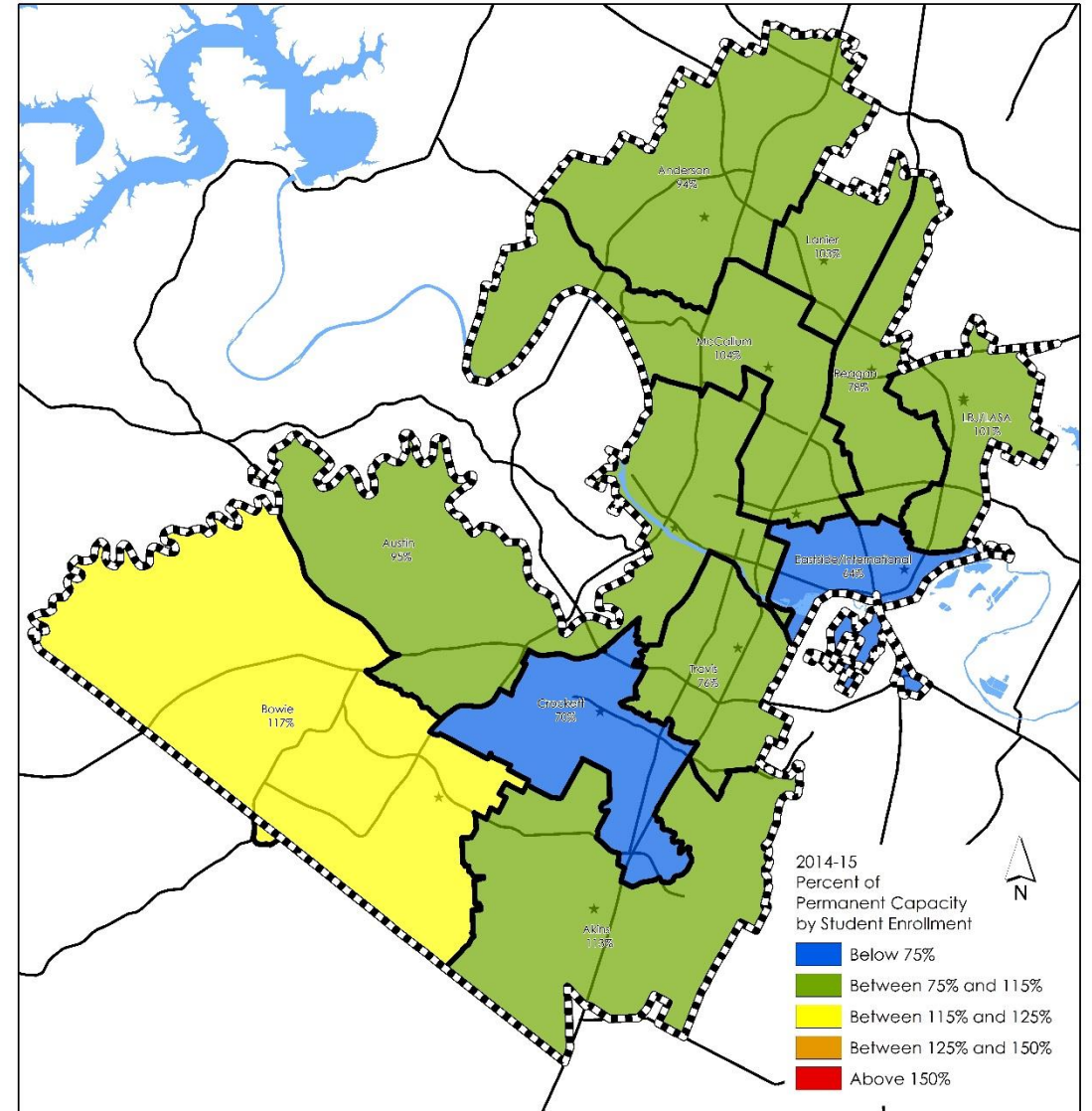


2014-15 High Schools

Where students **live**

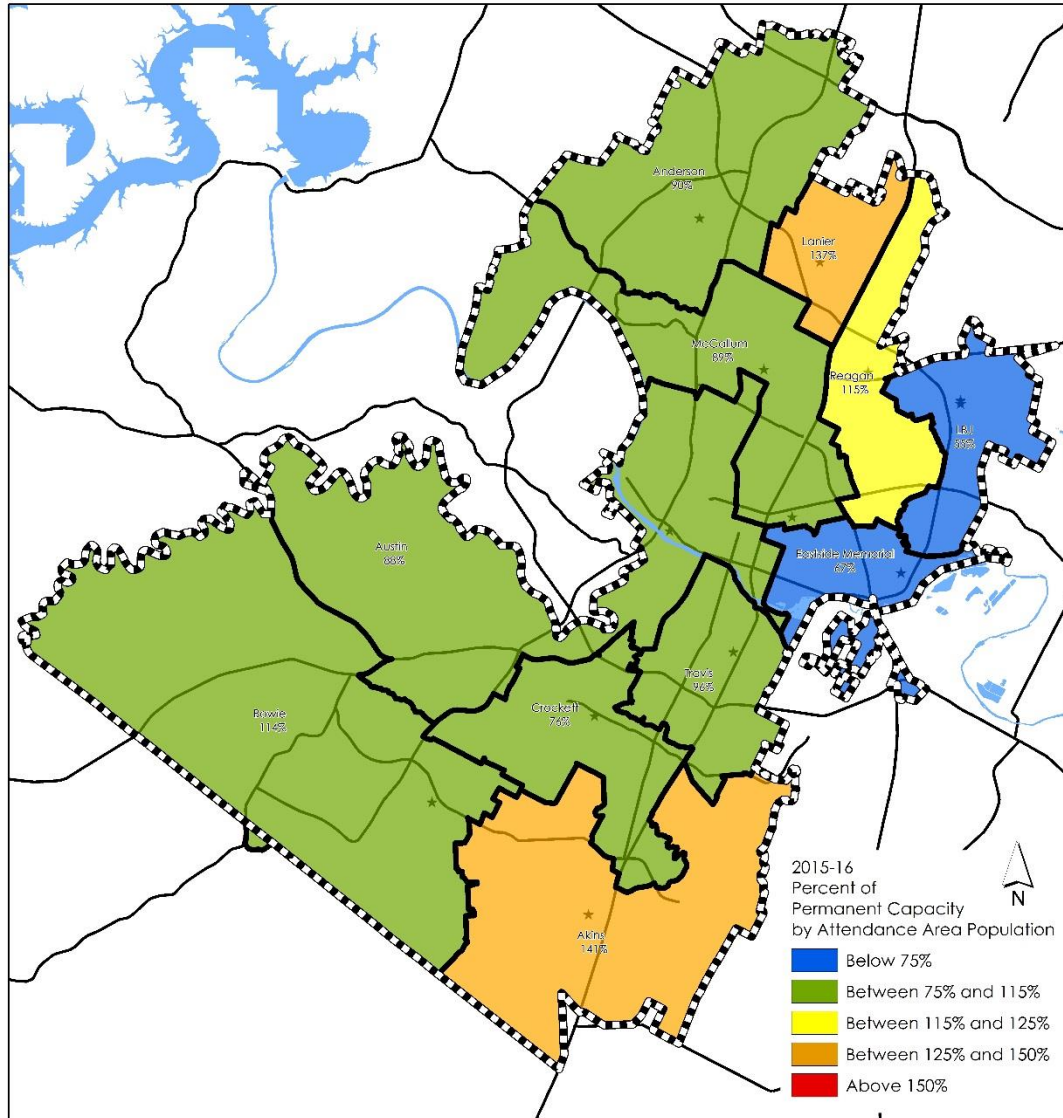


Where students **enroll**

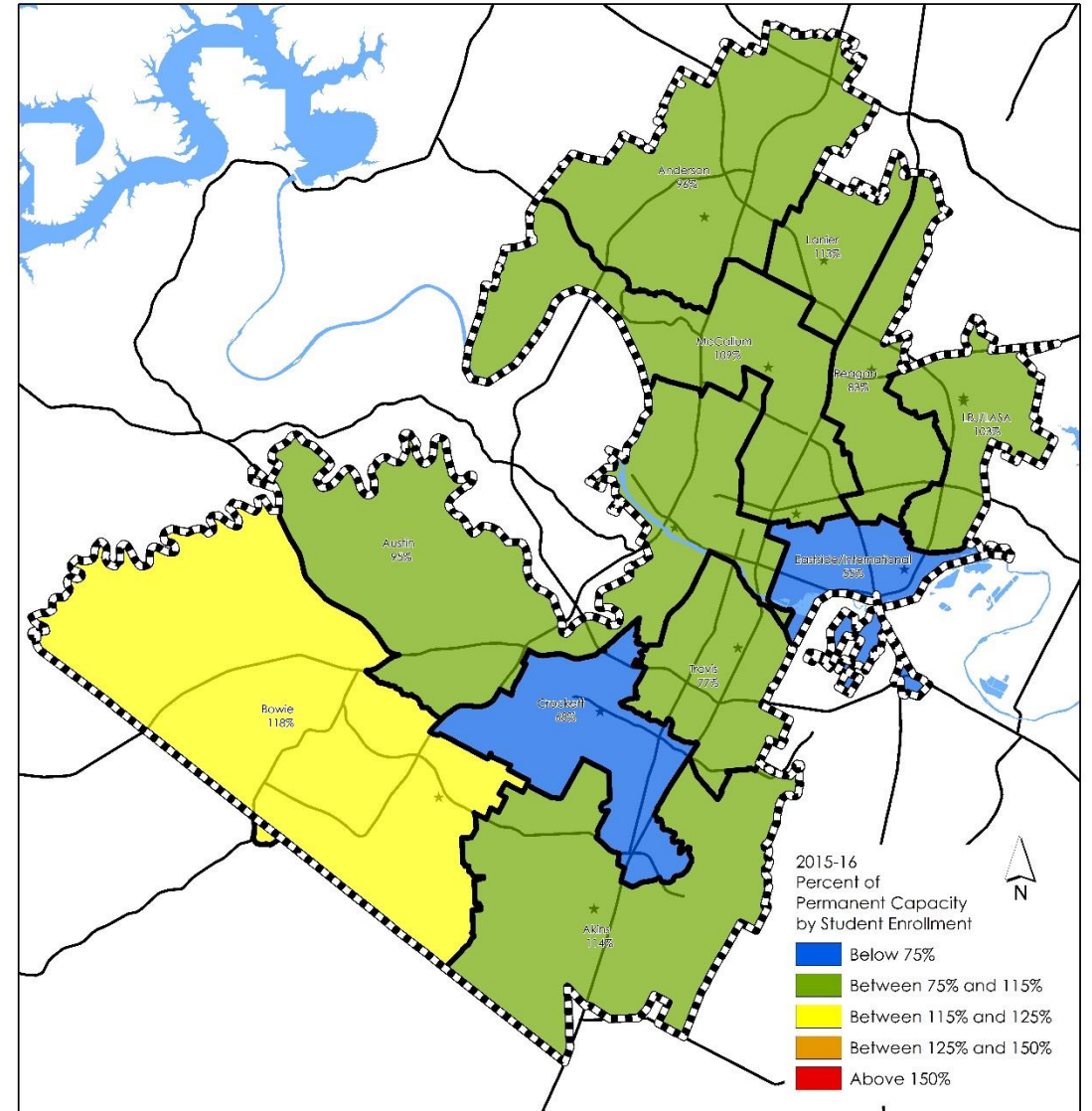


2015-16 High Schools

Where students **live**

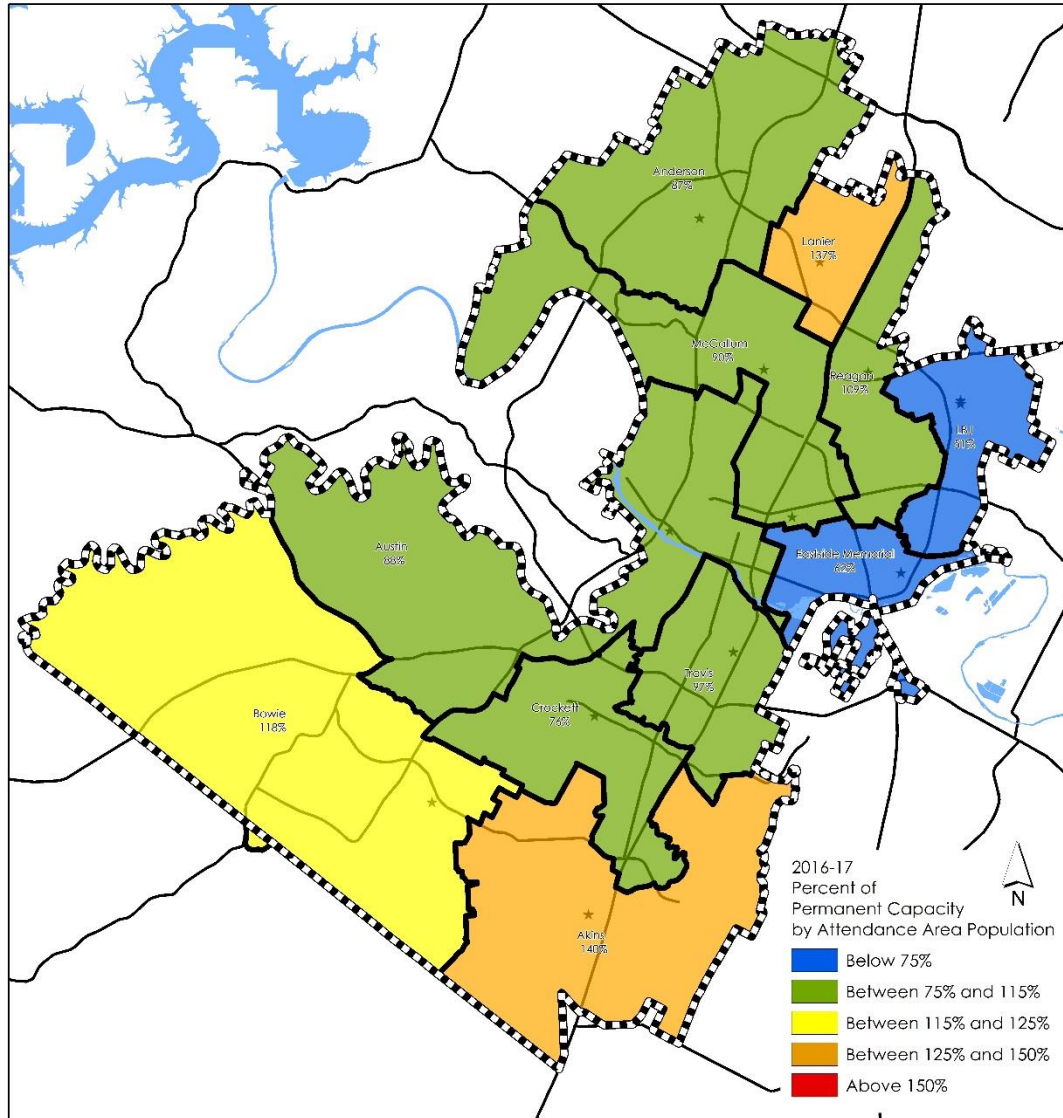


Where students **enroll**

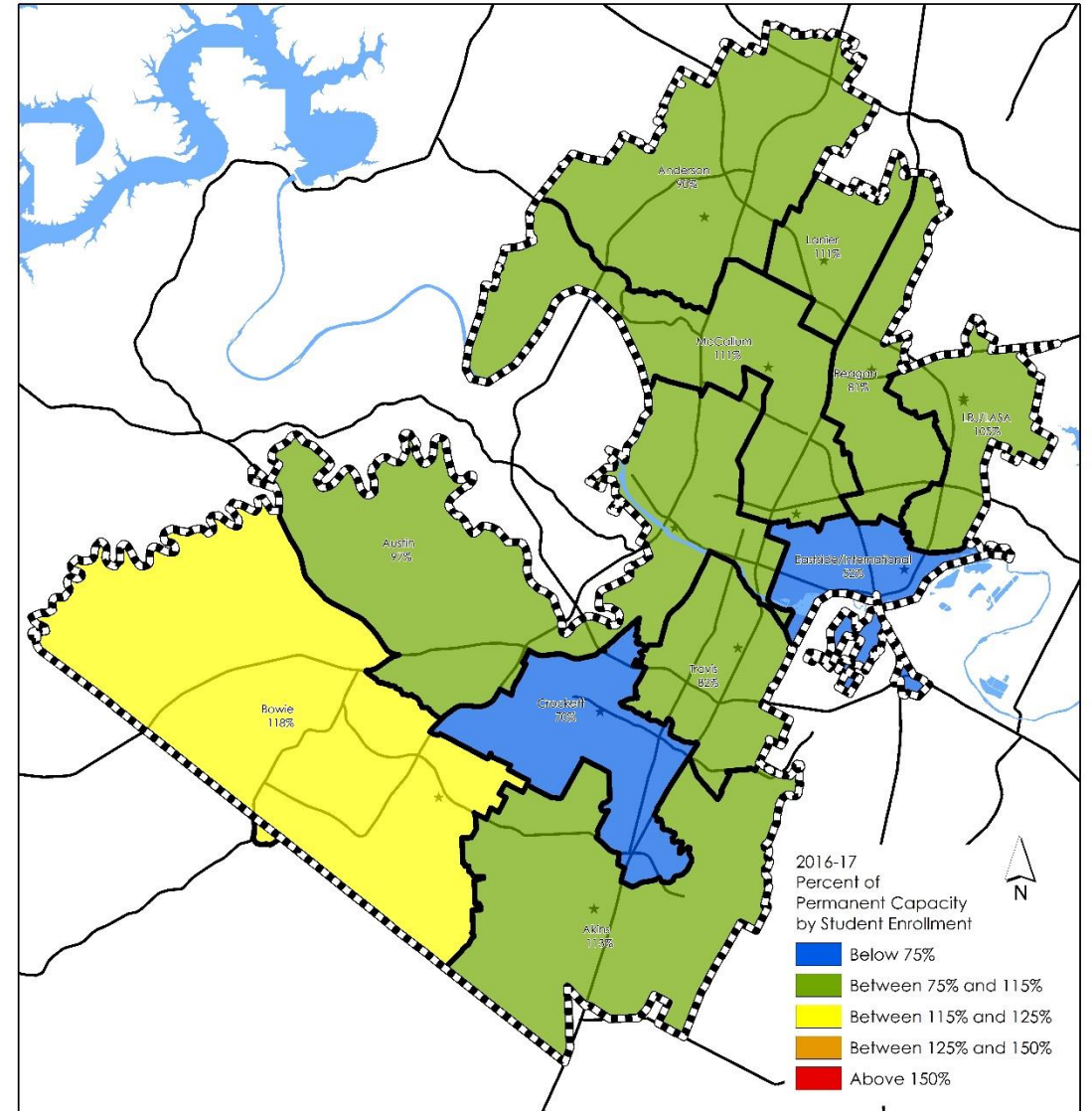


2016-17 High Schools

Where students **live**

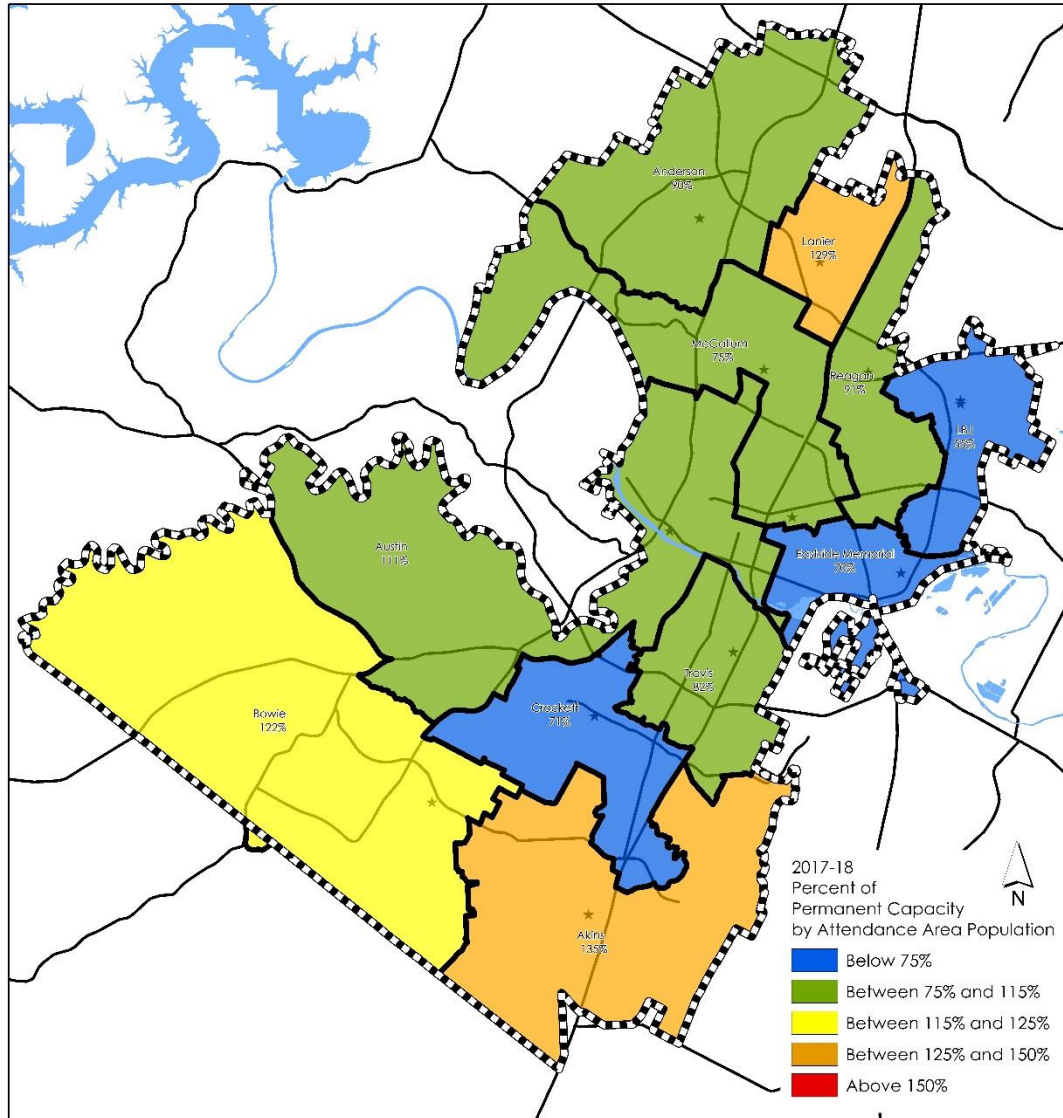


Where students **enroll**

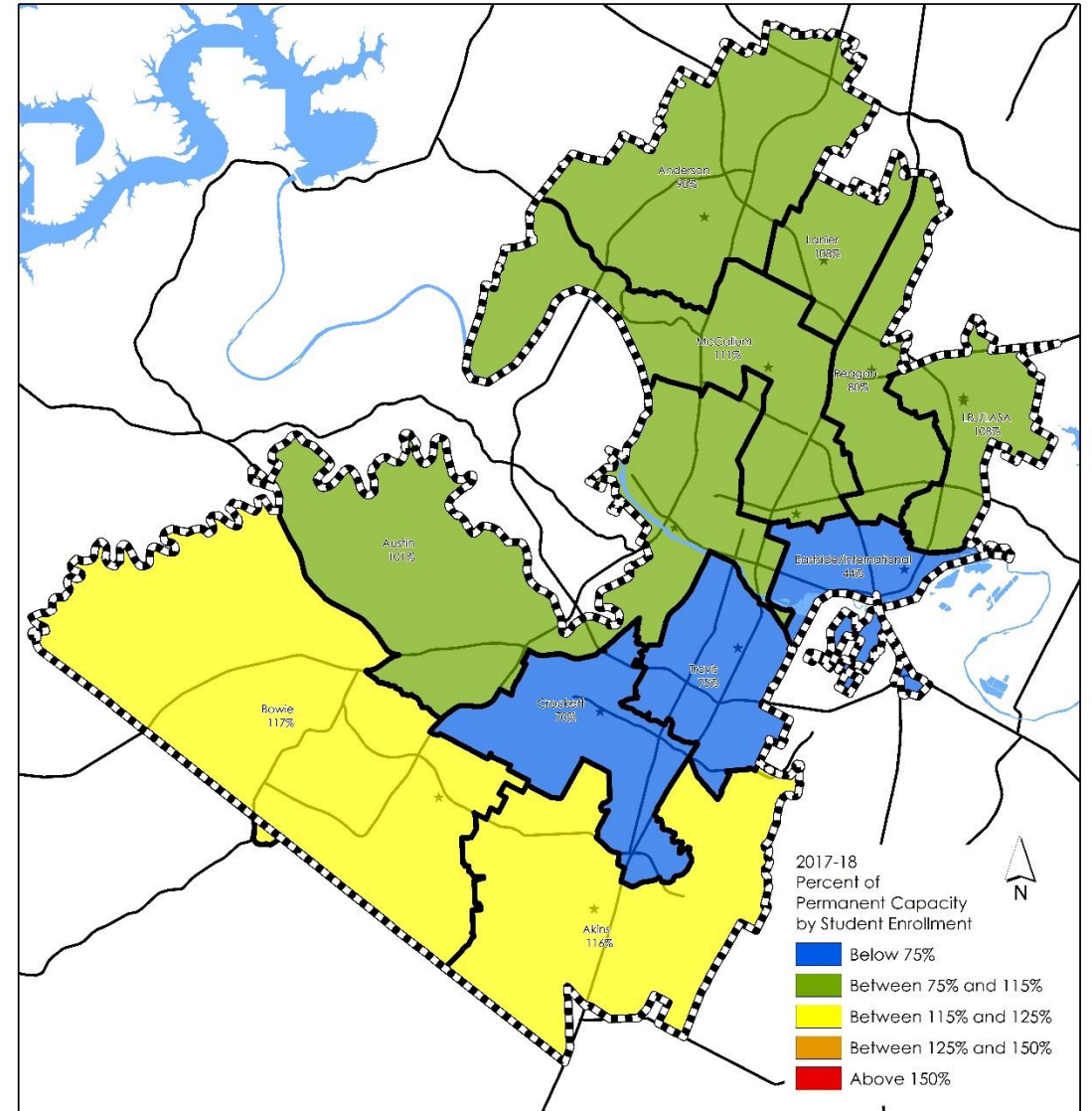


2017-18 High Schools

Where students **live**



Where students **enroll**



BOUNDARY ADVISORY COMMITTEE

PRIMARY CRITERIA FOR EVALUATING BOUNDARY PROPOSALS

Approved May 12, 2015

Primary Criterion (new school construction)

Recommend the establishment of and adjustments to school attendance areas to balance the projected student populations (where students live) of areas affected. Student populations for these attendance areas should be within the target range of 75-115 percent of permanent capacity. Historic net migration patterns will also be considered as a factor when creating attendance areas, as they may ultimately affect student enrollments.

Primary Criterion (without new school construction)

Recommend the adjustment of school attendance areas to balance student enrollments of areas affected. The student enrollments for these schools should be within the target range of 75-115 percent of permanent capacity. Projected student populations will also be considered as a factor when adjusting attendance areas, as they may affect future enrollments.



Morris Williams
Golf Course

Franklin Grove
28 residential units

Blanton Elementary

Maplewood Elementary

Sims Elementary

Lamar MS

Martin MS

CARMEL DR

CHASE CIR

ADRIANE DR

LUNA ST

PEREZ ST

E 16TH ST

DELONEY ST

E 17TH ST

E MARTIN LUTHER KING JR BLVD

GREENWOOD AVE

PALO PINTO DR

PALO PINTO DR PERSHING DR

LORETO DR

TILLERY ST

ANTONE ST

HERMALINDA ST

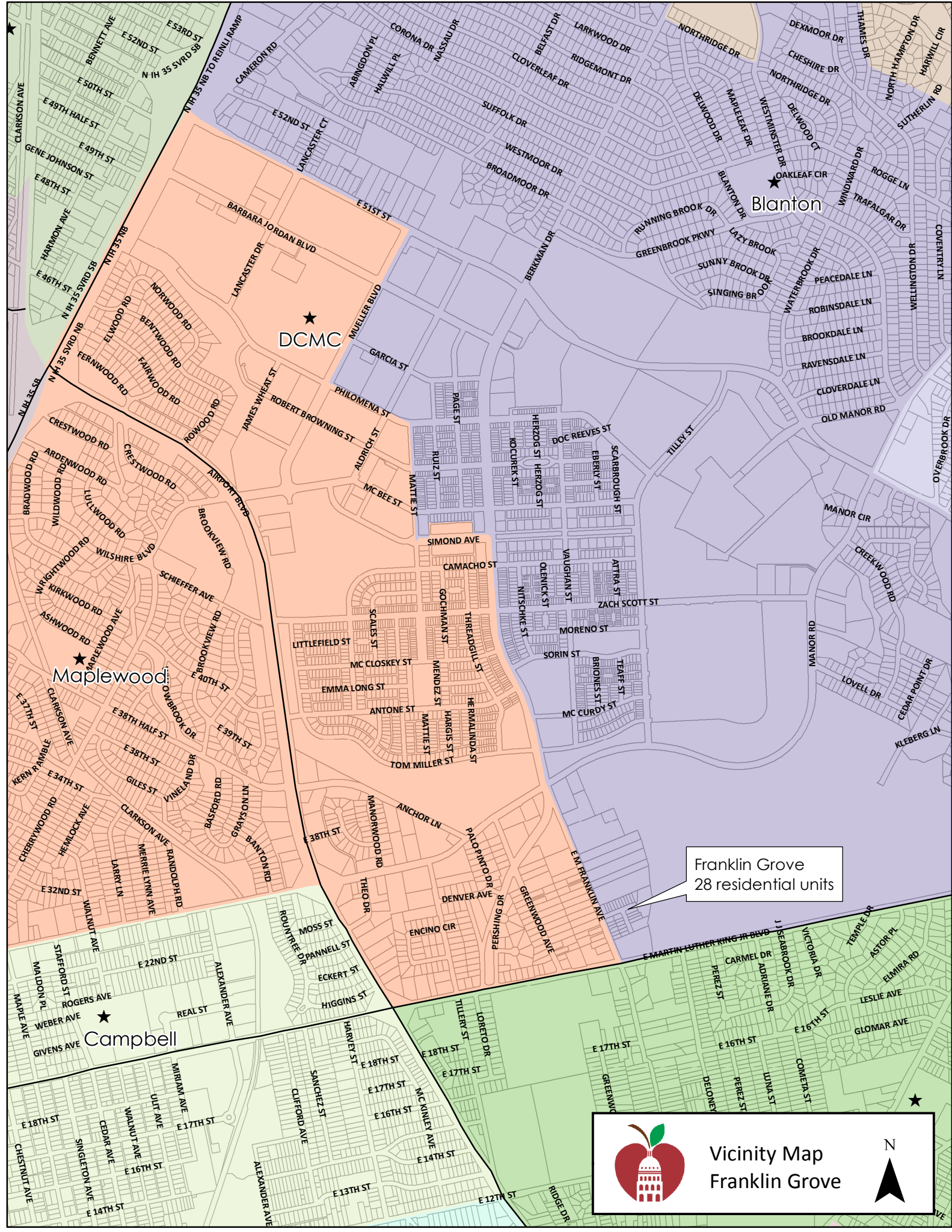
BERKMAN DR

TOM MILLER ST

MC CURDY ST

TEAFF ST

TILLEY ST



DCMC

Blanton

Maplewood

Campbell

Franklin Grove
28 residential units



Vicinity Map
Franklin Grove

