


AUSTIN

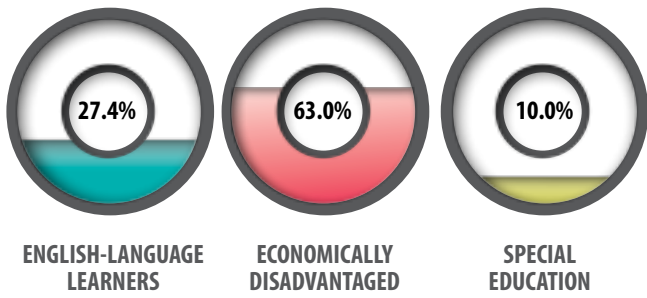
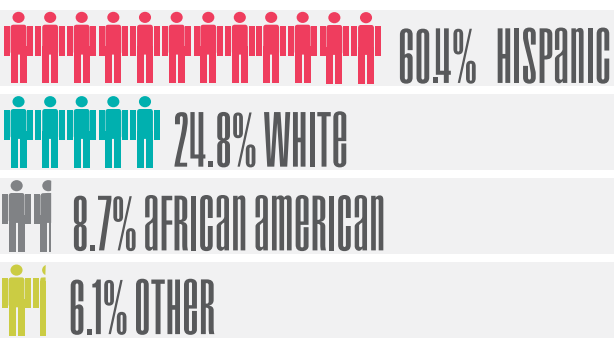


INDEPENDENT SCHOOL DISTRICT 2012-13 ANNUAL REPORT

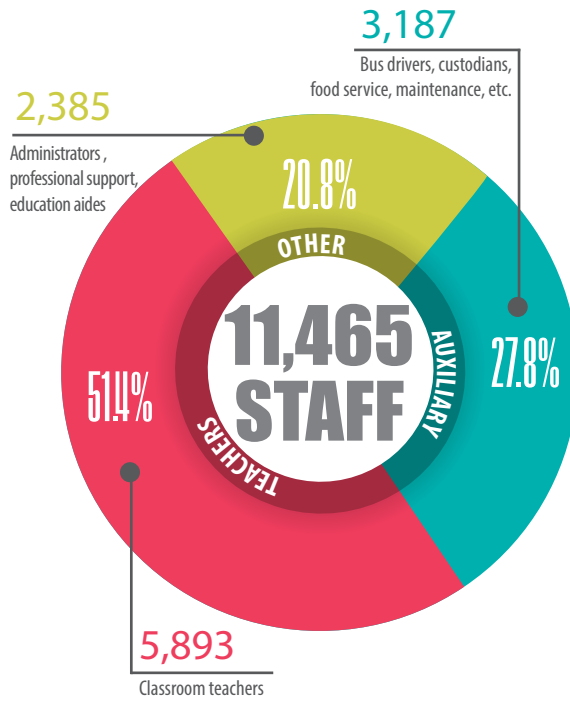
In partnership with parents and our community,
AISD exists to provide a comprehensive educational experience
that is high quality, challenging, and inspires all students
to make a positive contribution to society.

STUDENT INFORMATION

86,233 STUDENTS



EMPLOYEE INFORMATION



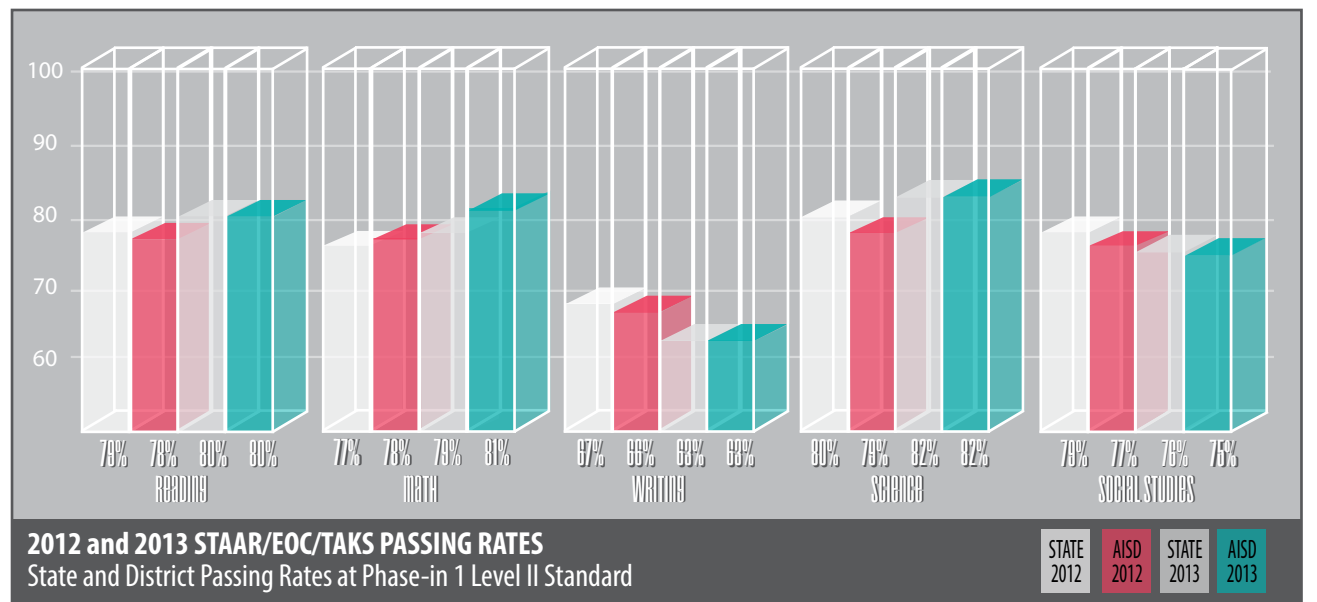
128 TOTAL CAMPUSES
Serving more than 86,000 students and 11,500 staff members.

CITY INFORMATION

Austin ISD serves the city's dynamic, diverse and rapidly growing population. Nearly 17.2% of the population is foreign born and 31.5% of AISD families do not speak English in the home. AISD is classified as a "property wealthy" district, where the medium home value in Austin is \$234,2000 and the average monthly rent is \$962. However, more than 55% of housing is renter occupied and 26% of AISD families live in a different residence than a year ago.

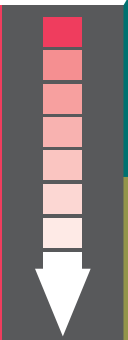


STATE TESTING AND ACCOUNTABILITY



DROPOUT RATES

The drop out rate has declined dramatically over four years from 12.5% in 2008 to 9.5% in 2012.



GRADUATION RATES

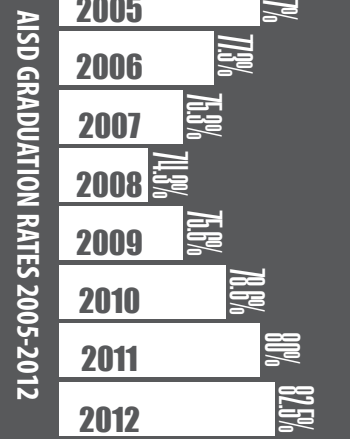
After years of decline, the AISD graduation rate has increased 8 percentage points, from 74.3% in 2008 to 82.5% in 2012.

The number is also going up among sub groups:

- The graduation rate for Hispanic students increased to 78.6%.
- The graduation rate for African-American students increased to 79.6%.
- The graduation rate for economically disadvantaged students increased to 78.9%.

COLLEGE READINESS

- The percentage of students taking college entrance exams like the SAT or ACT increased from 77.7% in 2011.
- The number of students enrolling in dual-credit courses also increased from 27.1% in 2010 to 31.2% in 2011.
- Post-secondary enrollment numbers fell from 67% in 2011 to 66% in 2012, but the number of students applying for college who are Hispanic, African-American or economically disadvantaged has increased.



FY2013 BUDGET

FY2013 OPERATING EXPENDITURES BY FUNCTION

Instruction	\$4,948	60.73%
Instructional Resources and Media Services	\$123	1.51%
Curriculum and Staff Development	\$188	2.3%
Instructional Administration	\$117	1.43%
School Administration	\$549	6.73%
Guidance and Counseling	\$226	2.77%
Attendance and Social Work Services	\$33	.41%
Health Services	\$70	.86%
Pupil Transportation	\$310	3.81%
Food Services	-	0%
Co-curricular Activities	\$153	1.88%
General Administration	\$209	2.56%
Plant Maintenance	\$905	11.10%
Security and Monitoring Services	\$113	1.39%
Data Processing Services	\$204	2.5%

\$8,147 PER PUPIL
BASED ON ENROLLMENT OF 87,336

GENERAL FUND
\$835,961,379

DEBT SERVICE
\$102,744,144

FOOD SERVICE
\$40,797,276

There are currently 21 large urban school districts that participate in the NAEP Trial Urban District Assessment (TUDA). AISD students ranked 2nd in the percentage of students at or above proficient for grade 4 and 3rd for grade 8 on the 2013 NAEP in Mathematics; AISD students ranked 3rd in Reading at grades 4 and 8. Students who are African-American, Hispanic, economically disadvantaged, English language learners, and/or students with disabilities also performed well.

- #3** Economically disadvantaged students ranked 3rd in grade 4 math and 6th in grade 8 math.
- #2** English language learners ranked 2nd in grade 4 math and 5th in grade 8 math.
- #3** Students with disabilities ranked 3rd in grade 4 math and 5th in grade 8 math.

NATIONAL ASSESSMENT
OF ACADEMIC PROGRESS

For the first time, attendance at the high school level has exceeded 90% for three consecutive years.

Attendance rates for Hispanic, African American and Economically Disadvantaged students have each increased nearly a full percentage point since the 2009-10 school year.

For ELL students attendance increased by .7 percentage points while the rate for Special Education students increased by 2.0 percentage points.

Over three years, these increases resulted in an increase in revenue to AISD of nearly \$5.3 million.

95.2%
DISTRICT-WIDE ATTENDANCE RATE

1%
INCREASE OVER 3 YEARS