



2017
BOND
PROGRAM

AUSTIN ISD STATE OF THE BOND REPORT

NOVEMBER 2019





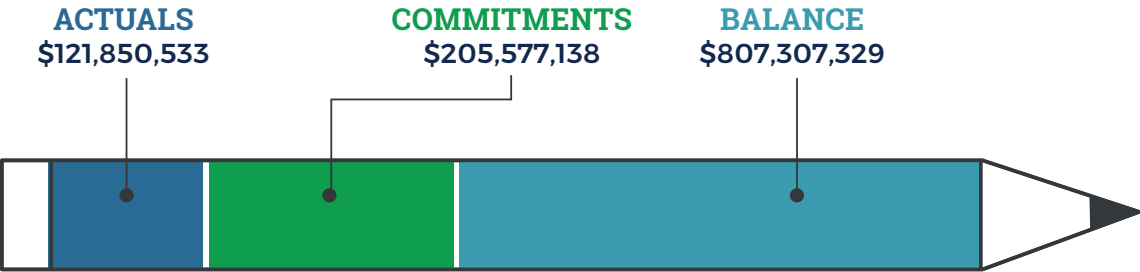
Casis Elementary School Co-Lab Rendering

On Nov. 7, 2017, a majority, 72 percent, of Austin voters passed Austin Independent School District’s bond proposal for \$1,050,984,000 to create 21st-century learning spaces for all students. More than two years of intensive analysis, planning and work went into the bond, which is designed to replace, improve, renovate and equip facilities for our approximately 80,100 students and 12,000 employees. Every school benefits.

In the second year of implementation, significant progress has been made on the bond program, including kicking off all modernization projects. Ten campuses are currently under construction, with three scheduled to open in early 2020. All bond projects will support equitable programming for students across the district to be successful in college, career and life. The following report highlights the work that has been done since the bond passed.

All data reflected in this report is specific to the 2017 Bond Program and current through October 2019.

2017 BOND FUNDING SPENT TO DATE



\$11.7M+

DOLLARS SPENT
ON TECHNOLOGY
UPGRADES TO DATE



ALL MODERNIZATION PROJECTS UNDERWAY:

1

project in
Master Planning

4

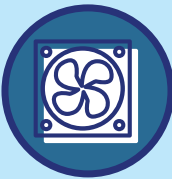
projects in Design
Development

1

project in
Pre-Design

11

projects in
Construction



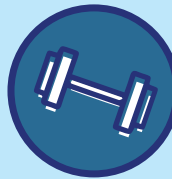
16

COMPLETED



56

UNDERWAY



63

SCHEDULED

TARGETED PROJECTS:





Top left
 Rendering of Eastside
 Memorial ECHS &
 International HS at
 Original L.C. Anderson
Architect: Perkins+Will

Middle right
 Rendering of Ann Richards
 School Entryway
Architect: O'Connell Robertson

Top right
 Rendering of Ann Richards
 School Commons
Architect: O'Connell Robertson



Bottom left
 Rendering of Eastside
 Memorial ECHS &
 International HS at
 Original L.C. Anderson
Architect: Perkins+Will

Bottom right
 Rendering of Bowie High
 School Parking Garage
Architect: Page Architects



The Board of Trustees appointed volunteer residents to the Community Bond Oversight Committee. The CBOC works to ensure that the projects remain faithful to the voter-approved bond program scope of work. They also monitor and ensure the bond projects are completed on time, with quality and within budget.

18
CBOC
MEMBERS

22
CBOC
MEETINGS
HELD



The CBOC receives a presentation from AISD Board President Rodriguez



Doss Elementary School Dining Hall Rendering



T.A. Brown and Webb Primary students at a community event

Campus Architectural Teams are made up of campus and community members who provide guidance to the design and construction professionals as they design the schools.

255+
CAT
MEMBERS

2017 BOND
ANNIVERSARY VIDEO:



230+
CAT
MEETINGS HELD

SCHOOL VR
TOURS:



55+
COMMUNITY
MEETINGS HELD

DRONE VIDEO
UPDATES:



Learn more about what’s happening at each site at AISDfuture.com

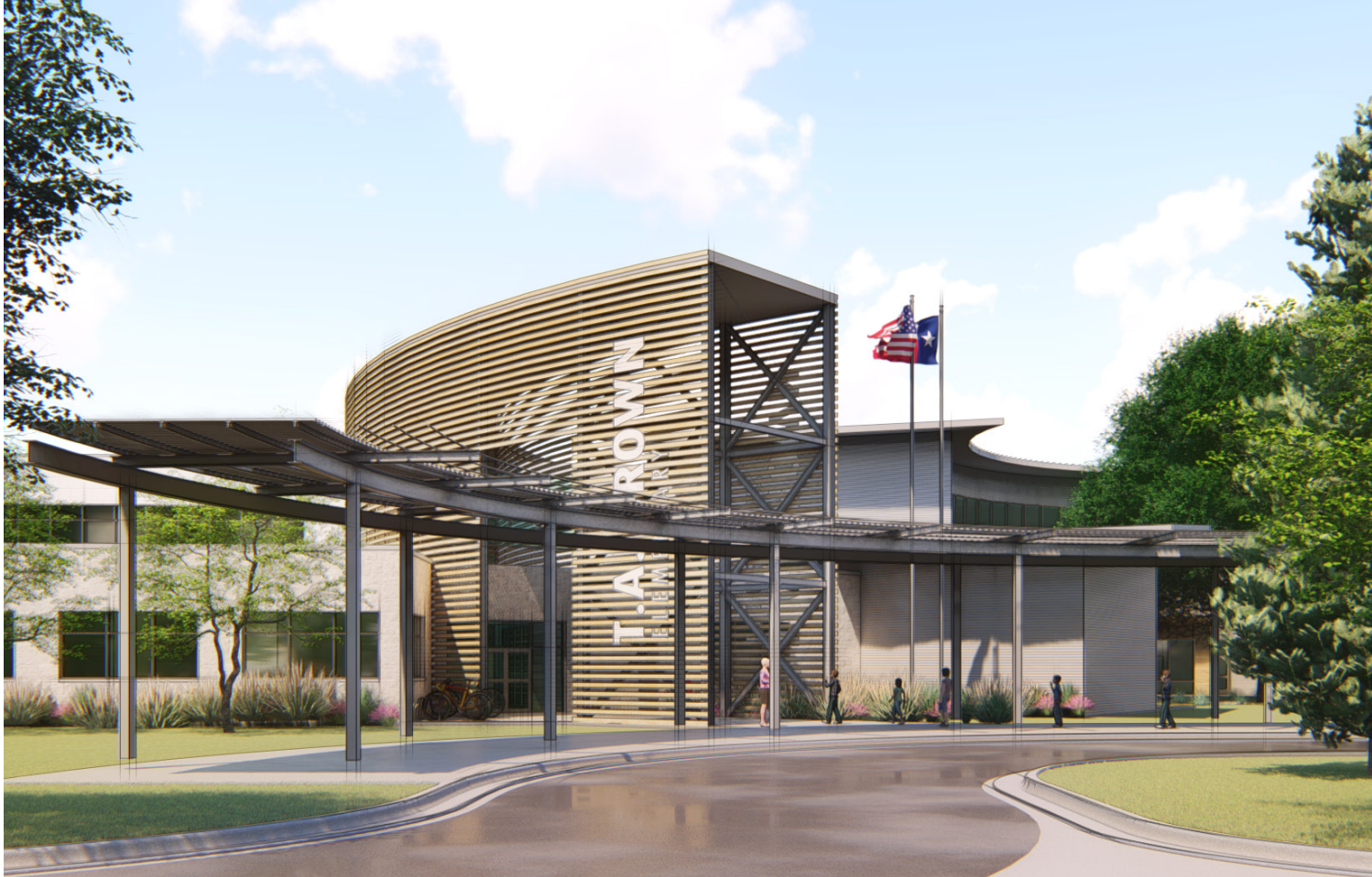
Top left
Rendering of
Menchaca Elementary
School Entryway
Architect: LPA



Middle left
Rendering of TA Brown
Elementary School
Playground
Architect: ERO Architects



Top right
Rendering of TA Brown
Elementary School
Architect: ERO Architects



Bottom right
Rendering of Govalle
Elementary School Entryway
Architect: PBK Architects

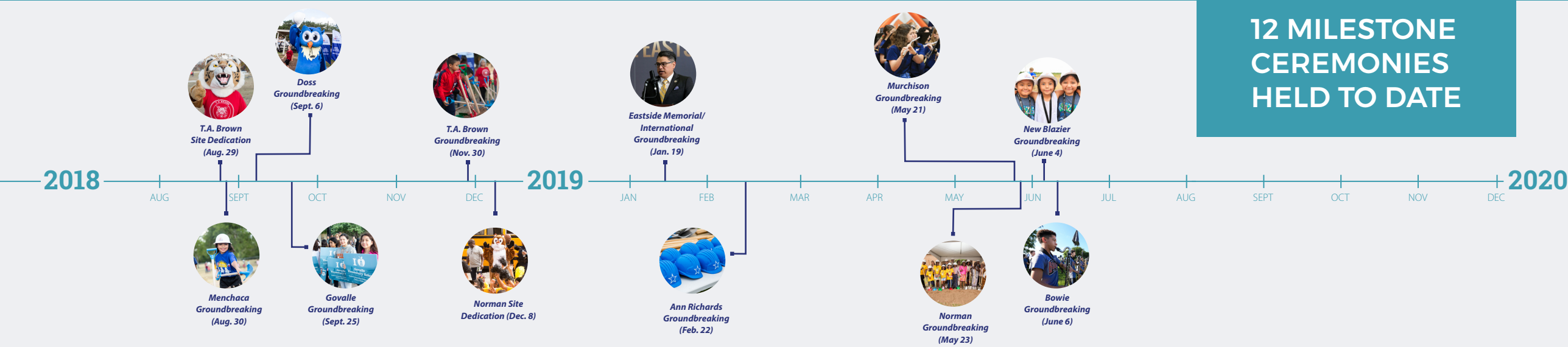
Bottom left
Rendering of Govalle
Elementary School Courtyard
Architect: PBK Architects



	Enrollment	Special Education	English Language Learners	Economically Disadvantaged
<i>Ann Richards School for Young Women Leaders</i>	856	0.8%	7.1%	50.9%
<i>Austin High School</i>	2,336	9.6%	5.8%	25.5%
<i>Bowie High School</i>	2,932	8.78%	1.5%	11.7%
<i>Brentwood Elementary School</i>	675	13.8%	7.4%	19.4%
<i>Casis Elementary School</i>	744	6.6%	2.6%	4.6%
<i>Doss Elementary School</i>	826	8.1%	16.8%	17.6%
<i>Govalle Elementary School</i>	369	22.5%	35.5%	90.8%
<i>Hill Elementary School</i>	1,003	7.3%	8.7%	9.7%
<i>LBJ Early College High School</i>	848	16.2%	25.0%	79.8%
<i>Menchaca Elementary School</i>	730	13.0%	22.1%	45.2%
<i>Murchison Middle School</i>	1,410	9.6%	8.5%	22.9%

	Enrollment	Special Education	English Language Learners	Economically Disadvantaged
<i>New Blazier Relief School</i>	865	13.4%	30.9%	70.9%
<i>Norman Elementary School*</i>	148	12.2%	24.3%	95.3%
<i>Rosedale School</i>	247	87.4%	13.0%	35.2%
<i>Sanchez Elementary School*</i>	271	8.5%	73.8%	91.9%
As called for in the 2017 Bond Election the following schools will consolidate when the modernized facility opens. These numbers are based on 2018-2019 student demographics.				
<i>Eastside Memorial Early College High School</i>	396	14.9%	35.1%	90.4%
<i>International High School</i>	203	0.0%	96.6%	95.6%
<i>T.A. Brown Elementary School</i>	240	13.8%	70.8%	97.1%
<i>Webb Primary School</i>	207	8.7%	75.4%	99.0%

*All enrollment data is based 2018-2019 student demographics, but these numbers may change based on outcomes from the 2019 School Changes process.
**New Northeast Middle School and New Southwest Elementary School have not been included, as boundaries have not yet been determined.





**SAVE THE DATE TO JOIN AUSTIN
ISD FOR THE FIRST THREE GRAND
OPENING CEREMONIES OF THE
2017 BOND PROGRAM:**

- T.A. Brown Elementary School (Jan. 8)
- Menchaca Elementary School (Jan. 10)
- Govalle Elementary School (TBA)

