



Our Mission: *In partnership with parents and our community, AISD exists to provide a comprehensive educational experience that is high quality, challenging, and inspires all students to make a positive contribution to society.*



Evaluation of Campus Performance in Community and Student Engagement

St. Elmo Elementary School

Expanding State Accountability Beyond Testing

Starting in 2013-14, every school district must evaluate each campus and the district as a whole on nine factors, as well as overall performance, and assign ratings of Exemplary, Recognized, Acceptable, or Unacceptable. The new rating system is required by House Bill 5 (see TEC § 39.0545 for details about the law).

This allows each campus to showcase the opportunities they provide to students, families, and the community in areas *other than standardized testing*.

2013-14 Campus Community & Student Engagement Ratings

Factors		Ratings
 Fine Arts		Exemplary
 Wellness and Physical Education		Exemplary
 Community and Parental Involvement		Exemplary
 21st Century Workforce Development Program		Exemplary
 Second Language Acquisition Program		Exemplary
 Digital Learning Environment		Exemplary
 Dropout Prevention Strategies		Exemplary
 Educational Programs for Gifted and Talented Students		Exemplary
Compliance		Yes
Overall Performance		Exemplary



Details about the law and new rating system can be found at www.austinisd.org/cda/hb5-community-student-engagement.

St. Elmo Elementary School

Fine Arts: Exemplary

Full time art and music teachers on campus, and Fine Arts curriculum in grades K-5

Any Given Child Arts Inventory completed

Creative Career exploration:

- Austin Jazz Workshop

Fine Arts productions or exhibitions:

- AISD Student Art Show at One Congress Plaza
- AISD Choral Festival; AISD Recorder Festival

Fine Arts community experiences:

- Young People's Concert
- AISD Choral Festival
- AISD Recorder Festival

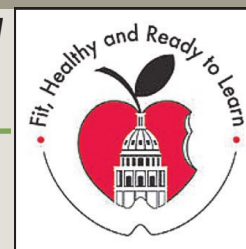
Creative writing/literary publications:

- School yearbook
- School newsletters



Wellness and Physical Education: Exemplary

Recognized or Exemplary rating on the Coordinated School Health Survey



Active Coordinated School Health Team

No Place for Hate designation

At least 95% of students are immunized 1

Community education programs:

- Marathon Kids
- Volleyball playday at UT
- Family Fitness Night

Staff fitness and wellness activities:

- Health Risk Assessment
- Camp Gladiator
- Yoga session at Family Fitness Night

Extra physical activities for students:

- WOW
- Intramurals

Community & Parental Involvement: Exemplary

Active Parent Teacher Association

Parent Satisfaction Survey administered

Parent Support Specialist on staff at least part time

Opportunities to get involved:

- Parent Resource Room
- Operation School Bell
- Letters

Regular forms of communication:

- ParentConnect
- Newsletters
- Letters

Parent informational events:

- Meet the Teacher Night
- Back to School Night
- Principal Coffees

Adult learning opportunities:

- Student attendance/truancy
- Social Emotional Learning
- Strengthening Families workshop series

Family Fun events:

- Winter Festival
- Nine Week Awards Assemblies
- St.Elmo McTeacher Night at McDonalds

21st Century Workforce Development Program: Exemplary

Students have mentors from Middle Schools.

Campus STaR Charts and student Technology Literacy Assessment results are used to develop campus technology plan and to determine staff development needs.



The school displays college pennants, displays diplomas/degrees of staff members, or participates in regular staff college dress days.

Parents and students are provided information about postsecondary opportunities.

College/Career Events:

- Career Day
- Careers on Wheels study trip

Overall Community & Student Engagement Rating: Exemplary

Second Language Acquisition Program: Exemplary

Active Language Proficiency Assessment Committee

TEA-approved language program/s offered: One-way Dual Language

ELL and non-ELL students participate together in music, art, and physical education classes.

At least 80% of campus bilingual/ESL teachers receive professional development in sheltered instruction.

Cultural awareness programs or special events:

- Fourth grade study trip to the Alamo for students & parents
- Veterans Day Program
- Grade level performances at PTA meetings



Digital Learning Environment: Exemplary



Students have access to computers for at least one hour per week.

The school provides training for staff and activities for students on recognizing and preventing cyberbullying.

STaR Chart Area 3: Advanced

STaR Chart Area 4: Advanced

Web-based learning opportunities:

- Istation
- Stemsopes
- Brainpop

Dropout Prevention Strategies: Exemplary

The school provides training for staff and activities for students on recognizing and preventing bullying.

All students identified as struggling in reading or writing are provided specialized instruction or intervention.

Mentorship program:

- Barking Book Buddies

STAAR intervention program:

- Afterschool tutorials and enrichment classes

Activities to promote an emotionally healthy environment:

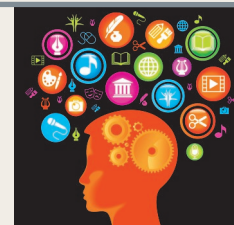
- No Place for Hate
- Social Emotional Learning
- Bystander Power



Educational Programs for Gifted and Talented Students: Exemplary

Gifted and Talented Program Self-Assessment:

- Student Assessment: Recommended
- Service Design: Exemplary
- Community Engagement: Recommended



Extracurricular enrichment activities:

- Chess club
- Primetime Afterschool Classes

St. Elmo Elementary School

Compliance: Yes

The school's 2013-14 Campus Improvement Plan is complete and has been approved by the district. (TEC §11.253)

The school complies with mandatory dissemination of annual TEA School Report Cards.

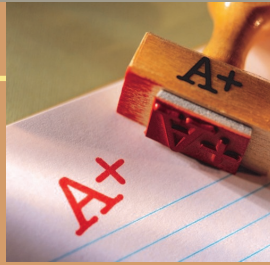
At least 80% of teachers are rated Proficient or better on the Professional Development and Appraisal System ratings of accountability. *Pilot campuses: At least 80% of teachers are rated Effective or better on the Pilot Appraisal System ratings of accountability.*

The school has an active Campus Advisory Council (CAC) that meets state and district requirements.

All students experiencing reading difficulties who do not respond to reading intervention are assessed for dyslexia by a teacher trained in dyslexia and related disorders. Students identified by the §504 committee as being dyslexic are provided appropriate services. (TEC §38.003 (a) and 19 TAC §74.28)

The school meets or exceeds Highly Qualified professional development standards.

The school provides special education programs that meet the individual needs of its special education students. (19 TAC §89.1001 (a))



Austin ISD District Ratings



Fine Arts: *Exemplary*

Wellness and Physical Education: *Exemplary*

Community and Parental Involvement: *Exemplary*

21st Century Workforce Development Program: *Exemplary*

Second Language Acquisition Program: *Exemplary*

Digital Learning Environment: *Exemplary*

Dropout Prevention Strategies: *Exemplary*

Educational Programs for Gifted and Talented Students: *Exemplary*

Compliance: *Yes*

Overall: *Exemplary*

How were the criteria for these ratings developed?

The legislation did not permit TEA to determine the criteria for these evaluations; criteria were to be developed by a local committee. The AISD District Advisory Council (DAC) was identified as the local committee.

October 2013: A DAC subcommittee made up of parents, teachers, staff, and community members met to discuss the new law and come up with a proposed framework.

December 2013: All district principals participated in workshops to help develop a list of ten indicators for each of the nine factors.

January 2014: Content experts were consulted to provide feedback and suggest improvements on the list of indicators. The DAC subcommittee reviewed the feedback and made modifications.

February 2014: The full DAC voted to accept the recommendation of the subcommittee. The proposed list of indicators was presented to Senior Cabinet, Principals, and Campus Advisory Councils.

March 2014: Community input was gathered through the district's website. Feedback from these groups was integrated.

April 2014: The proposed plan was taken to the Board of Trustees for discussion and feedback.

The 2013-14 school year will serve as a baseline year for this process. The DAC will have the opportunity to re-evaluate the process for future years, and make modifications if necessary.

Austin Independent School District • 1111 W. 6th St. • Austin, TX 78703 • 512-414-1700
Campus & District Accountability • accountability@austinisd.org • 512-414-9953

<http://www.austinisd.org/cda/hb5-community-student-engagement>